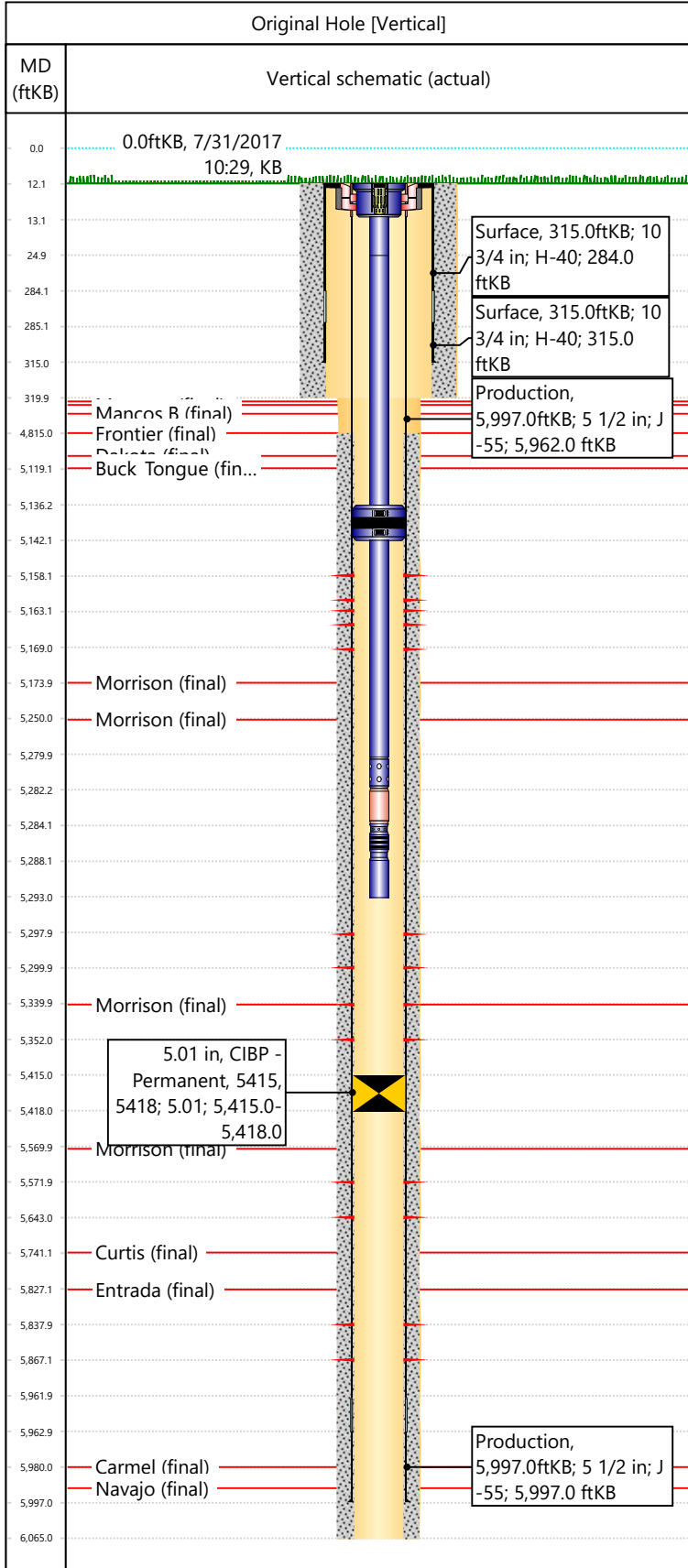


Well Name: DOUGLAS CK SOUTH 7306

API/UWI 05103050180000	Surface Legal Location SWNW-S1-T4S-R102W-6PM	Field Name South Douglas Creek	License #	State/Province CO	Well Configuration Type Vertical
Original KB Elevation (ft) 6,497	KB-Tubing Head Distance (ft) 12	Spud Date 6/23/1964 00:00	Rig Release Date 7/16/1964 00:00	PBDT (All) (KB) Original Hole - 5,924.0	Total Depth All (TVD) (KB) Original Hole - 6,065.0



Section Description	Size (in)	Btm Depth (ftKB)
Production	7 7/8	845.0
Surface	15	320.0
Surface	15	320.0
Production	7 7/8	6,065.0

Formation Name	Final Top MD (ftKB)
Mancos	845.0
Morapos	1,203.0
Mancos B	2,304.0
Frontier	4,750.0
Dakota	5,014.0
Buck Tongue	5,119.0
Morrison	5,174.0
Morrison	5,250.0
Morrison	5,340.0
Morrison	5,570.0
Curtis	5,741.0
Entrada	5,827.0
Carmel	5,980.0
Navajo	5,990.0

Csg Des	OD (in)	Wt/Len (lb/ft)	Grade	Set Depth (ftKB)
Surface	10 3/4	32.75	H-40	315.0
Production	5 1/2	14.00	J-55	5,997.0

Date	Top (ftKB)	Btm (ftKB)	Linked Zone
8/5/1964	5158	5169	Buckhorn, Original Hole
8/20/1964	5158	5163	Buckhorn, Original Hole
8/15/1964	5298	5300	Morrison B, Original Hole
7/29/1964	5340	5352	Morrison C, Original Hole
7/27/1964	5572	5643	Morrison D, Original Hole
7/23/1964	5838	5867	Entrada, Original Hole

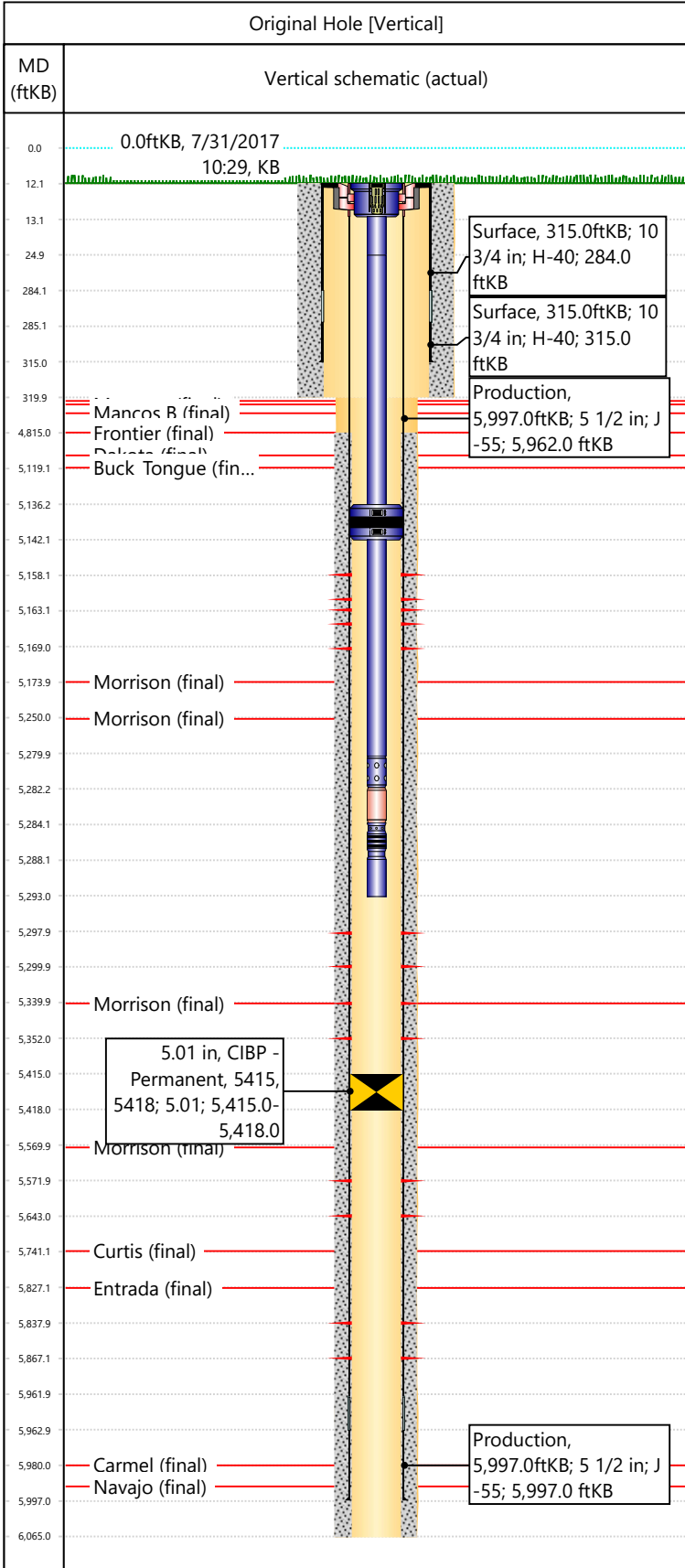
Total

Tubing Description	Run Date	String Length (ft)	Set Depth (ftKB)
Tubing - Production	8/24/1964	5,281.00	5,293.0

Item Des	Icon	Jts	OD (in)	Wt (lb/ft)	Grade	Len (ft)
Tubing Hanger	[Icon]	1	5	2.75	J-55	1
Tubing Pup Joint	[Icon]	1	1.9	2.75	J-55	12
Tubing	[Icon]	162	1.9	2.75	J-55	5111
Packer (Baker "R")	[Icon]	1	5.01	2.75	J-55	6
Tubing	[Icon]	5	1.9	2.75	J-55	138
Ported Nipple	[Icon]	1	1.9	2.75	J-55	2
Locator Sub	[Icon]	2	1.9	2.75	J-55	2
Seal Assembly	[Icon]	1	1.9	2.75	J-55	4
Tubing	[Icon]	1	1.9	2.75	J-55	5

Well Name: DOUGLAS CK SOUTH 7306

API/UWI 05103050180000	Surface Legal Location SWNW-S1-T4S-R102W-6PM	Field Name South Douglas Creek	License #	State/Province CO	Well Configuration Type Vertical
Original KB Elevation (ft) 6,497	KB-Tubing Head Distance (ft) 12	Spud Date 6/23/1964 00:00	Rig Release Date 7/16/1964 00:00	PBD (All) (KB) Original Hole - 5,924.0	Total Depth All (TVD) (KB) Original Hole - 6,065.0



Rod Strings						
Rod Description	Run Date	String Length (ft)		Set Depth (ftKB)		
Item Des	Icon	Jts	OD (in)	Wt (lb/ft)	Grade	Len (ft)

Other In Hole						
Des	Icon	OD (in)	Top (ftKB)	Btm (ftKB)	Run Date	Pull Date
CIBP - Permanent		5.01	5415	5418	7/29/1964	

Cement			
Description	Proposed/Actual Run	Type	Top Depth (ftKB)
Surface Casing Cement	Actual	Casing	12.0
Production Casing Cement	Actual	Casing	4,815.0