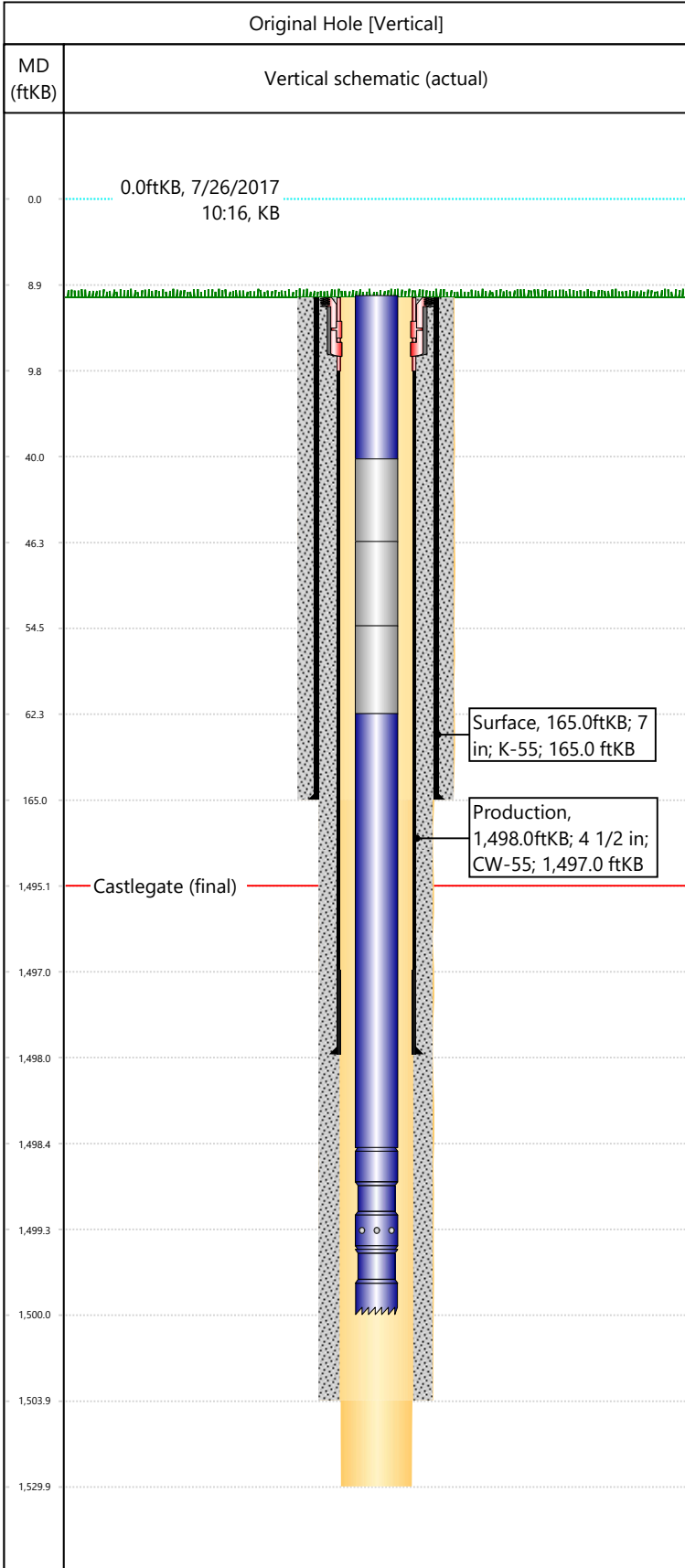


Well Name: DOUGLAS CK SOUTH 7304

API/UWI 05103087020000	Surface Legal Location SWNW-S7-T4S-R101W-6PM	Field Name South Douglas Creek	License #	State/Province CO	Well Configuration Type Vertical
Original KB Elevation (ft) 6,704	KB-Tubing Head Distance (ft) 9	Spud Date 3/18/1981 00:00	Rig Release Date 3/28/1981 00:00	PBTD (All) (KB)	Total Depth All (TVD) (KB) Original Hole - 1,530.0



Section Description	Size (in)	Btm Depth (ftKB)
Openhole	3 7/8	
Production	6 1/4	
Surface	8 3/4	165.0
Production	6 1/4	1,504.0
Openhole	3 7/8	1,530.0

Formations	Final Top MD (ftKB)
Castlegate	1,495.0

Csg Des	OD (in)	Wt/Len (lb/ft)	Grade	Set Depth (ftKB)
Surface	7	20.00	K-55	165.0
Production	4 1/2	10.50	CW-55	1,498.0

Tubing Strings	Run Date	String Length (ft)	Set Depth (ftKB)
Tubing - Production 2-3/8" YB	9/22/2017	1,491.02	1,500.0

Item Des	Icon	Jts	OD (in)	Wt (lb/ft)	Grade	Len (ft)
Tubing 2-3/8" YB		1	2 3/8	4.70	J-55	31.2
Tubing Pup Joint 2-3/8" NEW		1	2 3/8	4.70	J-55	6
Tubing Pup Joint 2-3/8" NEW		1	2 3/8	4.70	J-55	8.1
Tubing Pup Joint 2-3/8" NEW		1	2 3/8	4.70	J-55	8.1
Tubing		46	2 3/8	4.70	J-55	1436
Pump Seating Nipple		1	2 3/8			1.1
Notched collar		1	2 3/8		J-55	0.5

Rod Strings	Run Date	String Length (ft)	Set Depth (ftKB)

Other In Hole	Des	Icon	OD (in)	Top (ftKB)	Btm (ftKB)	Run Date	Pull Date

Cement	Proposed/Actual Run	Type	Top Depth (ftKB)
Surface Casing Cement	Actual	Casing	9.0
Production Casing Cement	Actual	Casing	9.0