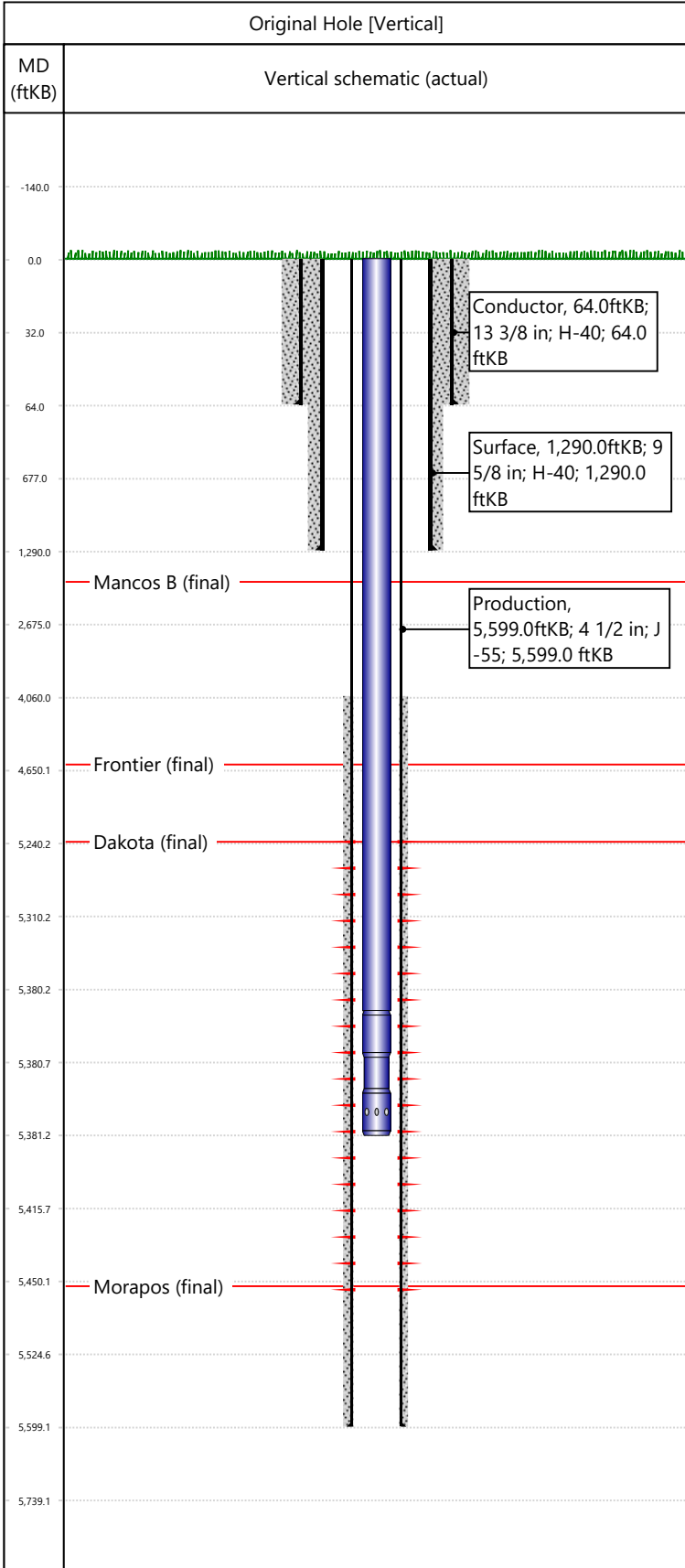


Well Name: ROPE CANYON 5-31

API/UWI 05103075110000	Surface Legal Location	Field Name Cathedral	License #	State/Province CO	Well Configuration Type Vertical
Original KB Elevation (ft) 6,594	KB-Tubing Head Distance (ft)	Spud Date	Rig Release Date	PBTD (All) (KB)	Total Depth All (TVD) (KB)



Hole Size		Size (in)	Btm Depth (ftKB)			
Section Description						
Formations						
Formation Name			Final Top MD (ftKB)			
Morapos			5,455.0			
Formation Name			Final Top MD (ftKB)			
Frontier			4,610.0			
Formation Name			Final Top MD (ftKB)			
Dakota			5,238.0			
Formation Name			Final Top MD (ftKB)			
Mancos B			1,890.0			
Casing Strings						
Csg Des	OD (in)	Wt/Len (lb/ft)	Grade	Set Depth (ftKB)		
Conductor	13 3/8	48.00	H-40	64.0		
Surface	9 5/8	32.30	H-40	1,290.0		
Production	4 1/2	10.50	J-55	5,599.0		
Perforations						
Date	Top (ftKB)	Btm (ftKB)	Linked Zone			
	5240	5450	<ZoneName>, Original Hole			
Total						
Tubing Strings						
Tubing Description	Run Date	String Length (ft)	Set Depth (ftKB)			
Tubing - Production	9/14/2013	5,381.39	5,381.4			
Item Des	Icon	Jts	OD (in)	Wt (lb/ft)	Grade	Len (ft)
Tubing		184	2 3/8	4.70	J-55	5380.4
Seating nipple w/notched collar		1	2 3/8			1
Rod Strings						
Rod Description	Run Date	String Length (ft)	Set Depth (ftKB)			
Item Des	Icon	Jts	OD (in)	Wt (lb/ft)	Grade	Len (ft)
Other In Hole						
Des	Icon	OD (in)	Top (ftKB)	Btm (ftKB)	Run Date	Pull Date
Cement						
Description	Proposed/Actual Run	Type	Top Depth (ftKB)			
Conductor Cement	Actual	Casing	0.0			
Production Casing Cement	Actual	Casing	4,060.0			
Surface Casing Cement	Actual	Casing	0.0			