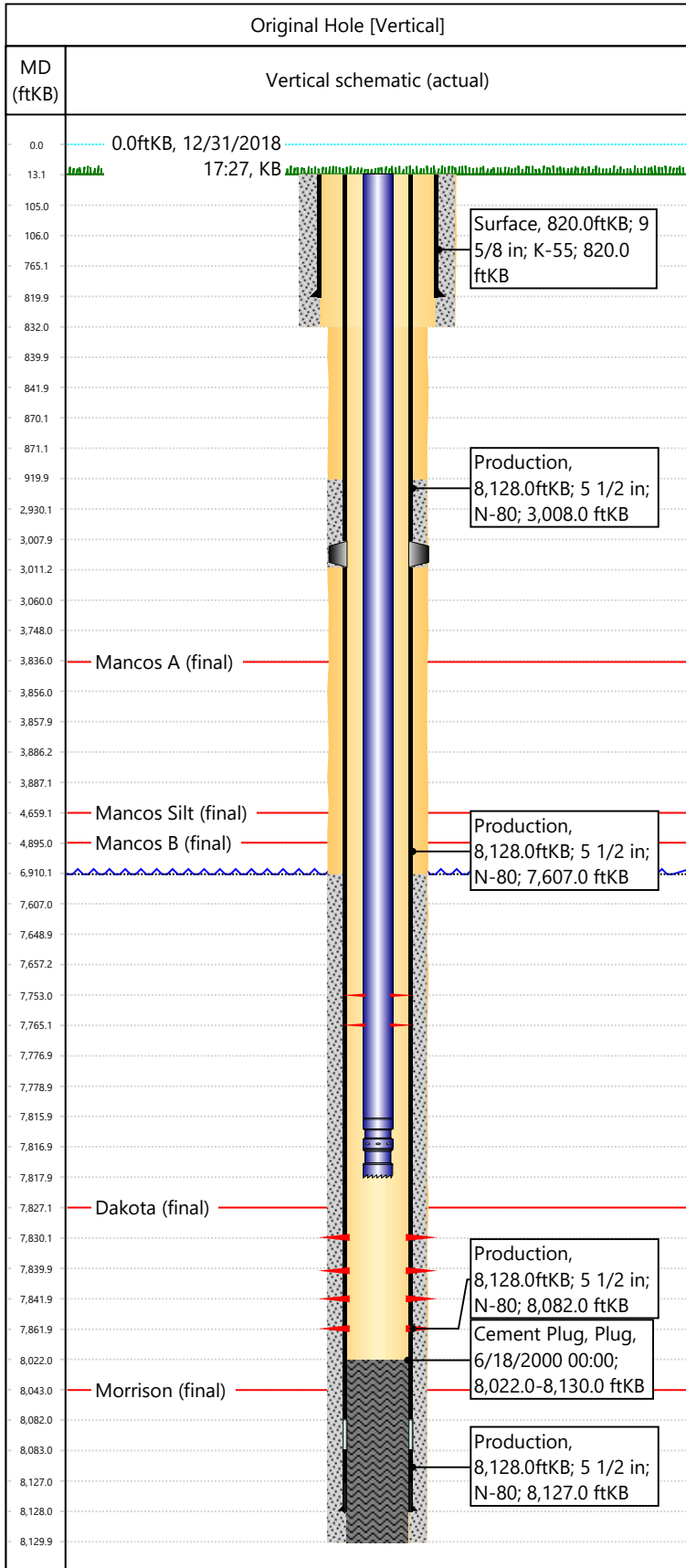


Well Name: **PARK MTN 9029 (2-31)**

API/UWI 05103099770000	Surface Legal Location SWSW-S31-T2S-R103W-6PM	Field Name Park Mountain	License #	State/Province CO	Well Configuration Type Vertical
Original KB Elevation (ft) 6,833	KB-Tubing Head Distance (ft) 13	Spud Date 2/9/2000 00:00	Rig Release Date 6/18/2000 00:00	PBDT (All) (KB) Original Hole - 8,022.0	Total Depth All (TVD) (KB) Original Hole - 8,130.0



Section Description	Size (in)	Btm Depth (ftKB)
Surface	12 1/4	
Surface	12 1/4	832.0
Production	7 7/8	8,130.0

Formation Name	Final Top MD (ftKB)
Mancos A	3,836.0
Mancos B	4,895.0
Dakota	7,827.0
Morrison	8,043.0
Mancos Silt	4,659.0

Csg Des	OD (in)	Wt/Len (lb/ft)	Grade	Set Depth (ftKB)
Surface	9 5/8	36.00	K-55	820.0
Production	5 1/2	17.00	N-80	8,128.0

Date	Top (ftKB)	Btm (ftKB)	Linked Zone
	105	106	
	870	871	
	3886	3887	
3/14/2012	7753	7765	
6/24/2000	7830	7840	Dakota, Original Hole
6/9/2001	7842	7862	Dakota, Original Hole

Total

Tubing Description	Run Date	String Length (ft)	Set Depth (ftKB)
Tubing - Production	7/6/2000	7,805.00	7,818.0

Item Des	Icon	Jts	OD (in)	Wt (lb/ft)	Grade	Len (ft)
Tubing		242	2 3/8	4.70	J-55	7803
Pump Seating Nipple		1	2 3/8	4.70	J-55	1
Notched collar		1	2 3/8	4.70	J-55	1

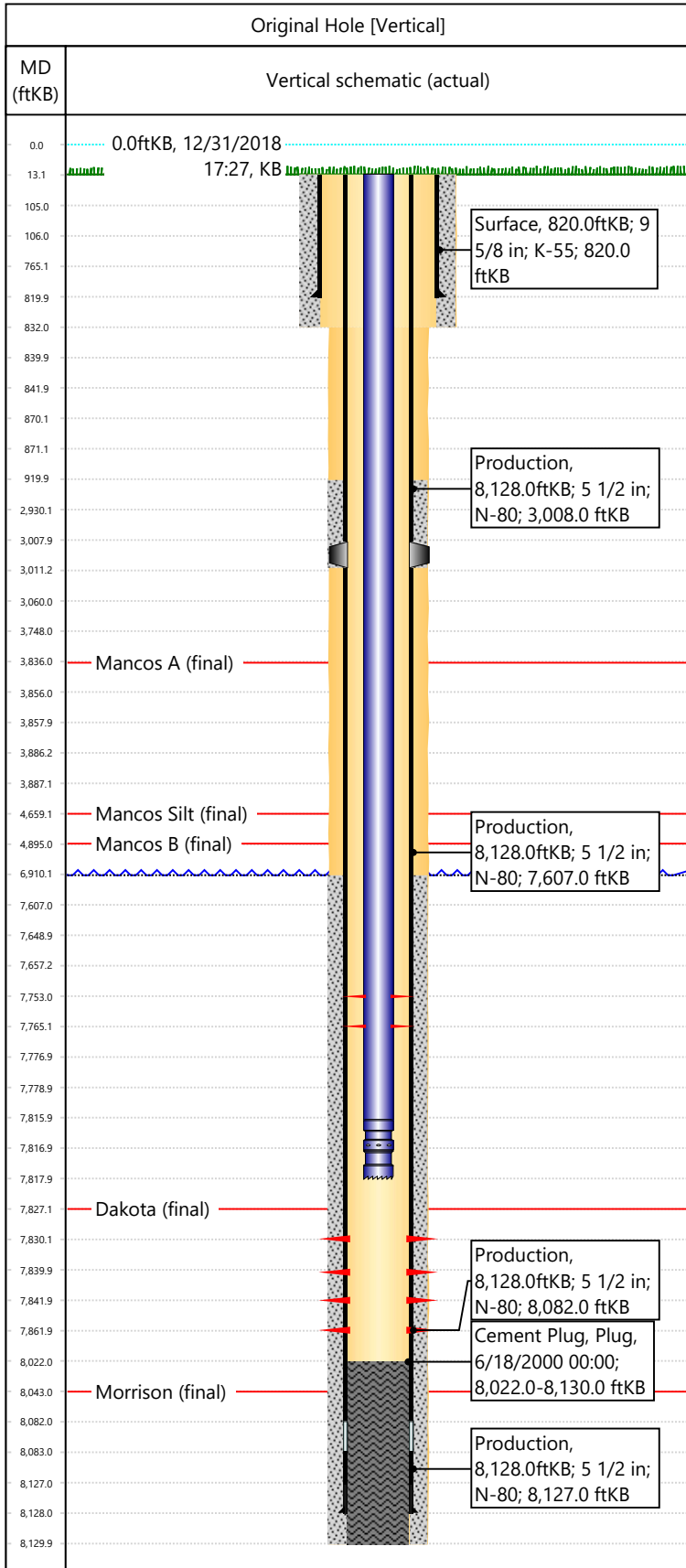
Rod Description	Run Date	String Length (ft)	Set Depth (ftKB)

Des	Icon	OD (in)	Top (ftKB)	Btm (ftKB)	Run Date	Pull Date
14 sxs cement		4.76	7657	7777		
Bridge Plug - Permanent		4.76	7777	7779		
3.4 sxs cement		4.76	3858	3887		
Cement Retainer		4.76	3856	3858		
12.3 sxs cement		4.76	3748	3856		
Cement Retainer		4.76	840	842		
15 sxs cement		4.76	2930	3060		
8.5 sxs cement		4.76	765	840		
3.4 sxs cement		4.76	842	871		
12 sxs cement		4.76	13	106		

Description	Proposed/Actual Run	Type	Top Depth (ftKB)
Remedial Cmt Squeeze	Proposed	Casing - Remedial	13.0
Surface Casing Cement	Actual	Casing	13.0

Well Name: **PARK MTN 9029 (2-31)**

API/UWI 05103099770000	Surface Legal Location SWSW-S31-T2S-R103W-6PM	Field Name Park Mountain	License #	State/Province CO	Well Configuration Type Vertical
Original KB Elevation (ft) 6,833	KB-Tubing Head Distance (ft) 13	Spud Date 2/9/2000 00:00	Rig Release Date 6/18/2000 00:00	PBTD (All) (KB) Original Hole - 8,022.0	Total Depth All (TVD) (KB) Original Hole - 8,130.0



Cement			
Description Production Casing Cement	Proposed/Actual Run Actual	Type Casing	Top Depth (ftKB) 920.0
Description Cement Plug	Proposed/Actual Run Actual	Type Plug	Top Depth (ftKB) 8,022.0