

# FULCRUM ENERGY OPERATING



Location: COLORADO Slot: SLOT#05 JANET 0780 11S-4H9 (377'FNL & 839'FEL,SEC.04)

Field: JACKSON COUNTY (NAD83/TN) Well: JANET 0780 11S-4H9

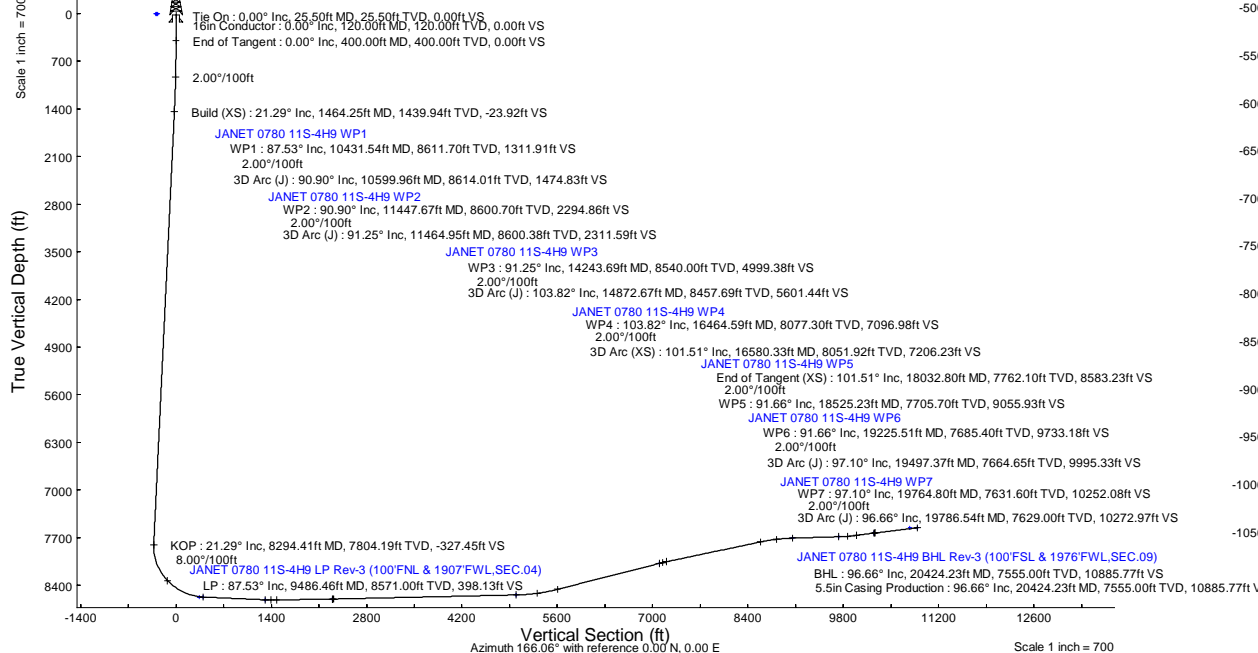
Facility: SEC.04-T07N-R80W Wellbore: JANET 0780 11S-4H9 PWB

Plot reference wellpath is JANET 0780 11S-4H9 (REV-C.0) PWP	Grid System: NAD83 / Lambert Colorado SP, Northern Zone (501), US feet
True vertical depths are referenced to (R099)GL+25.5KB = 8124.5(RKB) (RKB)	North Reference: True north
Reference wellpath measured depths are referenced to (R099)GL+25.5KB = 8124.5(RKB) (RKB)	Scale: True distance
(R099)GL+25.5KB = 8124.5(RKB) (RKB) to Mean Sea Level: 8124.5 feet	Coordinates are in feet referenced to Slot
Mean Sea Level to Ground level (At Slot: SLO7R05 JANET 0780 11S-4H9 (377FNL & 839FEL,SEC.04)): 0 feet	Depths are in feet
Offset wellpath MDs are referenced to each path's default MD datum	Created by: maitsam01 on 2025-05-08; Database: WA_Denver

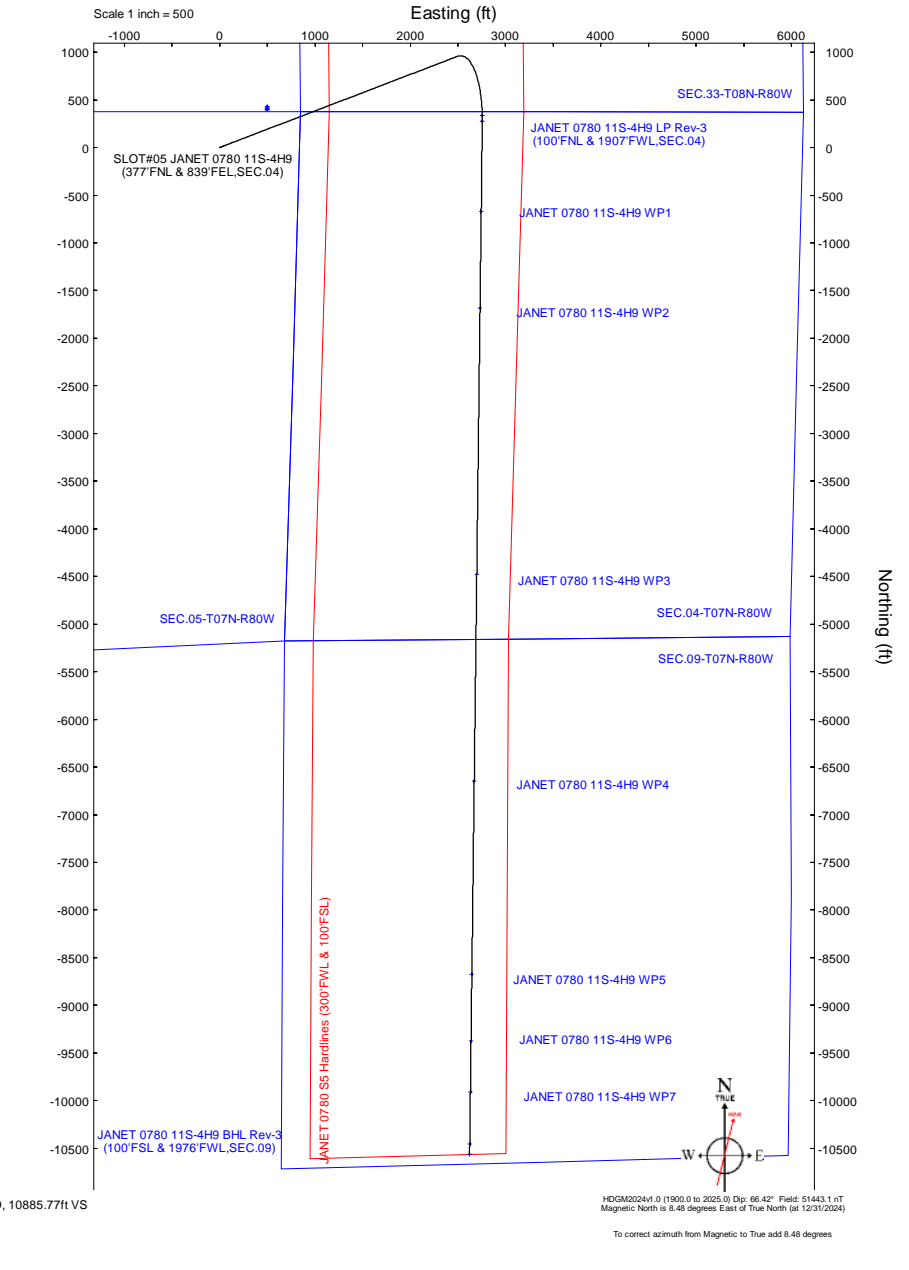
Location Information					
Facility Name	Grid East (US ft)	Grid North (US ft)	Latitude	Longitude	
SEC.04-T07N-R80W	2752737.421	1467805.737	40°36'50.8157"N	106°23'26.2746"W	
Slot	Local N (ft)	Local E (ft)	Grid East (US ft)	Grid North (US ft)	Latitude
SLOT#05 JANET 0780 11S-4H9 (377FNL & 839FEL,SEC.04)	0.81	79.99	2752817.410	1467805.740	40°36'50.8237"N
(R099)GL+25.5KB = 8124.5(RKB) to Ground level (At Slot: SLO7R05 JANET 0780 11S-4H9 (377FNL & 839FEL,SEC.04))					8124.5ft
Mean Sea Level to Ground level (At Slot: SLO7R05 JANET 0780 11S-4H9 (377FNL & 839FEL,SEC.04))					0ft
(R099)GL+25.5KB = 8124.5(RKB) to Mean Sea Level					8124.5ft

Well Profile Data							
Design Comment	MD (ft)	Inc (°)	Az (°)	TVD (ft)	Local N (ft)	Local E (ft)	VS (ft)
Tie On	25.50	0.000	69.024	25.50	0.00	0.00	0.00
End of Tangent	400.00	0.000	69.024	400.00	0.00	0.00	0.00
Build (XS)	1464.25	21.285	69.024	1439.94	69.95	182.47	-23.92
KOP	8294.41	21.285	69.024	7804.19	957.51	2497.56	-327.45
LP	9486.46	87.532	180.641	8571.00	273.92	2755.39	8.00
WP1	10431.54	87.532	180.641	8611.70	-670.23	2744.83	0.00
3D Arc (J)	10599.96	90.899	180.711	8614.01	-838.59	2742.84	2.00
WP2	11447.67	90.899	180.711	8600.70	-1686.13	2732.33	0.00
3D Arc (J)	11464.95	91.245	180.704	8600.38	-1703.42	2732.11	2.00
WP3	14243.69	91.245	180.704	8540.00	-4481.29	2697.99	0.00
3D Arc (J)	14872.67	103.825	180.707	8457.69	-5103.54	2690.33	2.00
WP4	16464.59	103.825	180.707	8077.30	-6649.22	2671.25	0.00
3D Arc (XS)	16580.33	101.510	180.704	8051.92	-6762.13	2669.86	2.00
End of Tangent (XS)	18032.80	101.510	180.704	7762.10	-8185.28	2652.37	0.00
WP5	18525.23	91.661	180.702	7705.70	-8673.82	2646.38	2.00
WP6	19225.51	91.661	180.702	7685.40	-9373.76	2637.80	0.00
3D Arc (J)	19497.37	97.098	180.708	7664.65	-9644.70	2634.47	2.00
WP7	19764.80	97.098	180.708	7631.60	-9910.07	2631.19	0.00
3D Arc (J)	19786.54	96.663	180.700	7629.00	-9931.65	2630.92	2.00
BHL	20424.23	96.663	180.700	7555.00	-10564.98	2623.18	0.00

Survey Program					
Start MD (ft)	End MD (ft)	Tool	Model	Log Name/Comment	Wellbore
25.50	5071.19	OWSG MWD rev2	OWSG MWD rev2 - Standard		JANET 0780 11S-4H9 PWB
5071.19	20424.23	BH AutoTrak Curve/xpress (2019)	BH AutoTrak Curve/xpress (2019) (HRGM, Short spacing)		JANET 0780 11S-4H9 PWB



Targets							
Name	MD (ft)	TVD (ft)	Local N (ft)	Local E (ft)	Grid East (US ft)	Grid North (US ft)	Latitude
SEC.04-T07N-R80W	N/A	6.50	420.14	498.82	2753320.41	1468220.84	40°36'54.9751"N
SEC.05-T07N-R80W	N/A	6.50	410.14	498.82	2753320.31	1468210.84	40°36'54.8783"N
SEC.09-T07N-R80W	N/A	6.50	399.19	498.01	2753319.39	1468199.90	40°36'54.7682"N
SEC.33-T08N-R80W	N/A	6.50	430.14	498.82	2753320.51	1468230.84	40°36'55.0740"N
JANET 0780 11S-4H9 BHL Rev2 (211'FSL & 1977'FWL,SEC.09)	N/A	7555.00	-10453.68	2624.54	2755336.80	1457326.50	40°35'7.5262"N
JANET 0780 11S-4H9 BHL Rev3 (100'FSL & 1976'FWL,SEC.09)	20424.23	7555.00	-10564.98	2623.18	2755334.32	145715.22	40°35'6.4264"N
JANET 0780 11S-4H9 WP7	19784.80	7631.60	-9910.07	2631.19	2755348.90	1457870.00	40°35'12.8978"N
JANET 0780 11S-4H9 WP6	19225.51	7685.40	-9373.76	2637.80	2755360.90	1458406.20	40°35'18.1972"N
JANET 0780 11S-4H9 WP5	18525.23	7705.70	-8673.82	2646.38	2755376.50	1459106.00	40°35'25.1136"N
JANET 0780 11S-4H9 WP4	14644.59	8077.30	-6649.22	2671.25	2755421.70	1461130.20	40°35'45.1193"N
JANET 0780 11S-4H9 WP3	14243.69	8540.00	-4481.29	2697.99	2755470.20	1463297.70	40°36'54.5417"N
JANET 0780 11S-4H9 LP Rev2 (140'FNL & 1904'FWL,SEC.04)	N/A	8571.00	333.56	2756.05	2755576.60	1468111.60	40°36'54.1181"N
JANET 0780 11S-4H9 LP Rev3 (100'FNL & 1907'FWL,SEC.04)	9486.46	8571.00	273.92	2755.39	2755575.34	1468051.97	40°36'53.5288"N
JANET 0780 11S-4H9 WP2	11447.67	8600.70	-1686.13	2732.33	2755532.60	1468092.30	40°36'34.1610"N
JANET 0780 11S-4H9 WP1	10431.54	8611.70	-670.23	2744.83	2755555.30	1467108.00	40°36'44.1994"N
JANET 0780 SS Hardlines (300'FWL & 100'FSL)	N/A	9000.00	399.19	498.01	2753319.39	1468199.90	40°36'54.7682"N



HDMG2024v1.0 (1900.0 to 2025.0 Dip: 66.42° Field: 51443.1 mT Magnetic North is 8.48 degrees East of True North (at 12/31/2024))

To correct azimuth from Magnetic to True add 8.48 degrees



# Planned Wellpath Report

JANET 0780 11S-4H9 (REV-C.0) PWP

Page 1 of 8



REFERENCE WELLPATH IDENTIFICATION			
Operator	FULCRUM ENERGY OPERATING	Well	JANET 0780 11S-4H9
Field	JACKSON COUNTY (NAD83/TN)	API	05-057-06642
Facility	SEC.04-T07N-R80W	Wellbore	JANET 0780 11S-4H9 PWB
Slot	SLOT#05 JANET 0780 11S-4H9 (377'FNL & 839'FEL,SEC.04)		

REPORT SETUP INFORMATION			
Projection System	NAD83 / Lambert Colorado SP, Northern Zone (501), US feet	Software System	WellArchitect@ 6.0
North Reference	True	User	Martsam01
Scale	0.999977	Report Generated	5/7/2025 at 10:44:58 PM
Convergence at slot	0.58° West	Database	WA_Denver

WELLPATH LOCATION						
	Local coordinates		Grid coordinates		Geographic coordinates	
	North[ft]	East[ft]	Easting[US ft]	Northing[US ft]	Latitude	Longitude
Slot Location	0.81	79.99	2752817.41	1467805.74	40.6141177°	-106.3903437°
Facility Reference Pt			2752737.42	1467805.74	40.6141155°	-106.3906318°
Field Reference Pt			2986049.83	1344849.24	40.2800000°	-105.5500000°

WELLPATH DATUM			
Calculation method	Minimum curvature	(8099'GL+25.5'KB = 8124.5'RKB) (RKB) to Facility Vertical Datum	8124.50ft
Horizontal Reference Pt	Slot	(8099'GL+25.5'KB = 8124.5'RKB) (RKB) to Mean Sea Level	8124.50ft
Vertical Reference Pt	(8099'GL+25.5'KB = 8124.5'RKB) (RKB)	(8099'GL+25.5'KB = 8124.5'RKB) (RKB) to Ground Level at Slot (SLOT#05 JANET 0780 11S-4H9 (377'FNL & 839'FEL,SEC.04))	8124.50ft
MD Reference Pt	(8099'GL+25.5'KB = 8124.5'RKB) (RKB)	Section Origin	N 0.00, E 0.00 ft
Field Vertical Reference	Mean Sea Level	Section Azimuth	166.06°



# Planned Wellpath Report

JANET 0780 11S-4H9 (REV-C.0) PWP

Page 2 of 8



## REFERENCE WELLPATH IDENTIFICATION

Operator	FULCRUM ENERGY OPERATING	Well	JANET 0780 11S-4H9
Field	JACKSON COUNTY (NAD83/TN)	API	05-057-06642
Facility	SEC.04-T07N-R80W	Wellbore	JANET 0780 11S-4H9 PWB
Slot	SLOT#05 JANET 0780 11S-4H9 (377'FNL & 839'FEL,SEC.04)		

## WELLPATH DATA (224 stations) † = interpolated, ‡ = extrapolated station

MD [ft]	Inclination [°]	Azimuth [°]	TVD [ft]	Vert Sect [ft]	North [ft]	East [ft]	Grid East [US ft]	Grid North [US ft]	Latitude	Longitude	DLS [°/100ft]	Comments
0.00†	0.000	69.024	0.00	0.00	0.00	0.00	2752817.41	1467805.74	40.6141177	-106.3903437	0.00	
25.50	0.000	69.024	25.50	0.00	0.00	0.00	2752817.41	1467805.74	40.6141177	-106.3903437	0.00	Tie On
100.00†	0.000	69.024	100.00	0.00	0.00	0.00	2752817.41	1467805.74	40.6141177	-106.3903437	0.00	
200.00†	0.000	69.024	200.00	0.00	0.00	0.00	2752817.41	1467805.74	40.6141177	-106.3903437	0.00	
300.00†	0.000	69.024	300.00	0.00	0.00	0.00	2752817.41	1467805.74	40.6141177	-106.3903437	0.00	
400.00	0.000	69.024	400.00	0.00	0.00	0.00	2752817.41	1467805.74	40.6141177	-106.3903437	0.00	End of Tangent
500.00†	2.000	69.024	499.98	-0.21	0.62	1.63	2752819.05	1467806.35	40.6141194	-106.3903379	2.00	
600.00†	4.000	69.024	599.84	-0.85	2.50	6.52	2752823.95	1467808.17	40.6141245	-106.3903203	2.00	
700.00†	6.000	69.024	699.45	-1.92	5.62	14.65	2752832.12	1467811.21	40.6141331	-106.3902910	2.00	
800.00†	8.000	69.024	798.70	-3.41	9.98	26.03	2752843.54	1467815.46	40.6141451	-106.3902500	2.00	
900.00†	10.000	69.024	897.47	-5.33	15.58	40.64	2752858.20	1467820.91	40.6141604	-106.3901974	2.00	
1000.00†	12.000	69.024	995.62	-7.66	22.41	58.45	2752876.08	1467827.56	40.6141792	-106.3901332	2.00	
1100.00†	14.000	69.024	1093.06	-10.42	30.46	79.46	2752897.17	1467835.40	40.6142013	-106.3900575	2.00	
1200.00†	16.000	69.024	1189.64	-13.59	39.73	103.62	2752921.42	1467844.42	40.6142267	-106.3899705	2.00	
1300.00†	18.000	69.024	1285.27	-17.16	50.19	130.92	2752948.83	1467854.61	40.6142555	-106.3898722	2.00	
1400.00†	20.000	69.024	1379.82	-21.15	61.85	161.32	2752979.34	1467865.96	40.6142874	-106.3897627	2.00	
1464.25	21.285	69.024	1439.94	-23.92	69.95	182.47	2753000.57	1467873.86	40.6143097	-106.3896865	2.00	Build (XS)
1500.00†	21.285	69.024	1473.25	-25.51	74.60	194.59	2753012.73	1467878.38	40.6143224	-106.3896429	0.00	
1600.00†	21.285	69.024	1566.43	-29.96	87.59	228.48	2753046.75	1467891.03	40.6143581	-106.3895208	0.00	
1700.00†	21.285	69.024	1659.61	-34.40	100.59	262.38	2753080.78	1467903.69	40.6143938	-106.3893987	0.00	
1800.00†	21.285	69.024	1752.79	-38.84	113.58	296.27	2753114.80	1467916.34	40.6144294	-106.3892766	0.00	
1900.00†	21.285	69.024	1845.97	-43.29	126.58	330.17	2753148.82	1467928.99	40.6144651	-106.3891545	0.00	
2000.00†	21.285	69.024	1939.14	-47.73	139.57	364.06	2753182.85	1467941.65	40.6145008	-106.3890324	0.00	
2100.00†	21.285	69.024	2032.32	-52.18	152.57	397.96	2753216.87	1467954.30	40.6145364	-106.3889104	0.00	
2200.00†	21.285	69.024	2125.50	-56.62	165.56	431.85	2753250.89	1467966.95	40.6145721	-106.3887883	0.00	
2300.00†	21.285	69.024	2218.68	-61.06	178.56	465.75	2753284.91	1467979.61	40.6146078	-106.3886662	0.00	
2400.00†	21.285	69.024	2311.86	-65.51	191.55	499.64	2753318.94	1467992.26	40.6146434	-106.3885441	0.00	
2500.00†	21.285	69.024	2405.04	-69.95	204.55	533.54	2753352.96	1468004.91	40.6146791	-106.3884220	0.00	
2600.00†	21.285	69.024	2498.22	-74.39	217.54	567.43	2753386.98	1468017.57	40.6147148	-106.3882999	0.00	
2700.00†	21.285	69.024	2591.39	-78.84	230.54	601.33	2753421.01	1468030.22	40.6147504	-106.3881778	0.00	
2800.00†	21.285	69.024	2684.57	-83.28	243.53	635.22	2753455.03	1468042.87	40.6147861	-106.3880558	0.00	
2900.00†	21.285	69.024	2777.75	-87.73	256.53	669.12	2753489.05	1468055.53	40.6148218	-106.3879337	0.00	
3000.00†	21.285	69.024	2870.93	-92.17	269.52	703.01	2753523.08	1468068.18	40.6148574	-106.3878116	0.00	
3100.00†	21.285	69.024	2964.11	-96.61	282.51	736.91	2753557.10	1468080.83	40.6148931	-106.3876895	0.00	
3200.00†	21.285	69.024	3057.29	-101.06	295.51	770.80	2753591.12	1468093.49	40.6149288	-106.3875674	0.00	
3300.00†	21.285	69.024	3150.47	-105.50	308.50	804.70	2753625.14	1468106.14	40.6149644	-106.3874453	0.00	
3400.00†	21.285	69.024	3243.64	-109.95	321.50	838.59	2753659.17	1468118.79	40.6150001	-106.3873232	0.00	
3500.00†	21.285	69.024	3336.82	-114.39	334.49	872.49	2753693.19	1468131.45	40.6150358	-106.3872011	0.00	
3600.00†	21.285	69.024	3430.00	-118.83	347.49	906.38	2753727.21	1468144.10	40.6150714	-106.3870791	0.00	
3700.00†	21.285	69.024	3523.18	-123.28	360.48	940.28	2753761.24	1468156.76	40.6151071	-106.3869570	0.00	
3800.00†	21.285	69.024	3616.36	-127.72	373.48	974.17	2753795.26	1468169.41	40.6151428	-106.3868349	0.00	
3900.00†	21.285	69.024	3709.54	-132.17	386.47	1008.07	2753829.28	1468182.06	40.6151784	-106.3867128	0.00	
4000.00†	21.285	69.024	3802.72	-136.61	399.47	1041.96	2753863.31	1468194.72	40.6152141	-106.3865907	0.00	
4100.00†	21.285	69.024	3895.90	-141.05	412.46	1075.86	2753897.33	1468207.37	40.6152497	-106.3864686	0.00	
4200.00†	21.285	69.024	3989.07	-145.50	425.46	1109.75	2753931.35	1468220.02	40.6152854	-106.3863465	0.00	



# Planned Wellpath Report

JANET 0780 11S-4H9 (REV-C.0) PWP

Page 3 of 8



REFERENCE WELLPATH IDENTIFICATION			
Operator	FULCRUM ENERGY OPERATING	Well	JANET 0780 11S-4H9
Field	JACKSON COUNTY (NAD83/TN)	API	05-057-06642
Facility	SEC.04-T07N-R80W	Wellbore	JANET 0780 11S-4H9 PWB
Slot	SLOT#05 JANET 0780 11S-4H9 (377'FNL & 839'FEL,SEC.04)		

## WELLPATH DATA (224 stations) † = interpolated, ‡ = extrapolated station

MD [ft]	Inclination [°]	Azimuth [°]	TVD [ft]	Vert Sect [ft]	North [ft]	East [ft]	Grid East [US ft]	Grid North [US ft]	Latitude	Longitude	DLS ["/100ft]	Comments
4300.00†	21.285	69.024	4082.25	-149.94	438.45	1143.65	2753965.38	1468232.68	40.6153211	-106.3862244	0.00	
4400.00†	21.285	69.024	4175.43	-154.39	451.45	1177.54	2753999.40	1468245.33	40.6153567	-106.3861024	0.00	
4500.00†	21.285	69.024	4268.61	-158.83	464.44	1211.44	2754033.42	1468257.98	40.6153924	-106.3859803	0.00	
4600.00†	21.285	69.024	4361.79	-163.27	477.43	1245.34	2754067.44	1468270.64	40.6154281	-106.3858582	0.00	
4700.00†	21.285	69.024	4454.97	-167.72	490.43	1279.23	2754101.47	1468283.29	40.6154637	-106.3857361	0.00	
4800.00†	21.285	69.024	4548.15	-172.16	503.42	1313.13	2754135.49	1468295.94	40.6154994	-106.3856140	0.00	
4900.00†	21.285	69.024	4641.32	-176.60	516.42	1347.02	2754169.51	1468308.60	40.6155350	-106.3854919	0.00	
5000.00†	21.285	69.024	4734.50	-181.05	529.41	1380.92	2754203.54	1468321.25	40.6155707	-106.3853698	0.00	
5100.00†	21.285	69.024	4827.68	-185.49	542.41	1414.81	2754237.56	1468333.90	40.6156064	-106.3852477	0.00	
5200.00†	21.285	69.024	4920.86	-189.94	555.40	1448.71	2754271.58	1468346.56	40.6156420	-106.3851256	0.00	
5300.00†	21.285	69.024	5014.04	-194.38	568.40	1482.60	2754305.61	1468359.21	40.6156777	-106.3850036	0.00	
5400.00†	21.285	69.024	5107.22	-198.82	581.39	1516.50	2754339.63	1468371.86	40.6157134	-106.3848815	0.00	
5500.00†	21.285	69.024	5200.40	-203.27	594.39	1550.39	2754373.65	1468384.52	40.6157490	-106.3847594	0.00	
5600.00†	21.285	69.024	5293.57	-207.71	607.38	1584.29	2754407.68	1468397.17	40.6157847	-106.3846373	0.00	
5700.00†	21.285	69.024	5386.75	-212.16	620.38	1618.18	2754441.70	1468409.82	40.6158203	-106.3845152	0.00	
5800.00†	21.285	69.024	5479.93	-216.60	633.37	1652.08	2754475.72	1468422.48	40.6158560	-106.3843931	0.00	
5900.00†	21.285	69.024	5573.11	-221.04	646.37	1685.97	2754509.74	1468435.13	40.6158917	-106.3842710	0.00	
6000.00†	21.285	69.024	5666.29	-225.49	659.36	1719.87	2754543.77	1468447.78	40.6159273	-106.3841489	0.00	
6100.00†	21.285	69.024	5759.47	-229.93	672.36	1753.76	2754577.79	1468460.44	40.6159630	-106.3840268	0.00	
6200.00†	21.285	69.024	5852.65	-234.38	685.35	1787.66	2754611.81	1468473.09	40.6159987	-106.3839047	0.00	
6300.00†	21.285	69.024	5945.82	-238.82	698.34	1821.55	2754645.84	1468485.74	40.6160343	-106.3837826	0.00	
6400.00†	21.285	69.024	6039.00	-243.26	711.34	1855.45	2754679.86	1468498.40	40.6160700	-106.3836606	0.00	
6500.00†	21.285	69.024	6132.18	-247.71	724.33	1889.34	2754713.88	1468511.05	40.6161056	-106.3835385	0.00	
6600.00†	21.285	69.024	6225.36	-252.15	737.33	1923.24	2754747.91	1468523.70	40.6161413	-106.3834164	0.00	
6700.00†	21.285	69.024	6318.54	-256.59	750.32	1957.13	2754781.93	1468536.36	40.6161770	-106.3832943	0.00	
6800.00†	21.285	69.024	6411.72	-261.04	763.32	1991.03	2754815.95	1468549.01	40.6162126	-106.3831722	0.00	
6900.00†	21.285	69.024	6504.90	-265.48	776.31	2024.92	2754849.98	1468561.66	40.6162483	-106.3830501	0.00	
7000.00†	21.285	69.024	6598.08	-269.93	789.31	2058.82	2754884.00	1468574.32	40.6162839	-106.3829280	0.00	
7100.00†	21.285	69.024	6691.25	-274.37	802.30	2092.71	2754918.02	1468586.97	40.6163196	-106.3828059	0.00	
7200.00†	21.285	69.024	6784.43	-278.81	815.30	2126.61	2754952.04	1468599.62	40.6163553	-106.3826838	0.00	
7300.00†	21.285	69.024	6877.61	-283.26	828.29	2160.50	2754986.07	1468612.28	40.6163909	-106.3825617	0.00	
7400.00†	21.285	69.024	6970.79	-287.70	841.29	2194.40	2755020.09	1468624.93	40.6164266	-106.3824396	0.00	
7500.00†	21.285	69.024	7063.97	-292.15	854.28	2228.29	2755054.11	1468637.58	40.6164622	-106.3823175	0.00	
7600.00†	21.285	69.024	7157.15	-296.59	867.28	2262.19	2755088.14	1468650.24	40.6164979	-106.3821955	0.00	
7700.00†	21.285	69.024	7250.33	-301.03	880.27	2296.08	2755122.16	1468662.89	40.6165336	-106.3820734	0.00	
7800.00†	21.285	69.024	7343.50	-305.48	893.26	2329.98	2755156.18	1468675.54	40.6165692	-106.3819513	0.00	
7900.00†	21.285	69.024	7436.68	-309.92	906.26	2363.88	2755190.21	1468688.20	40.6166049	-106.3818292	0.00	
8000.00†	21.285	69.024	7529.86	-314.37	919.25	2397.77	2755224.23	1468700.85	40.6166405	-106.3817071	0.00	
8100.00†	21.285	69.024	7623.04	-318.81	932.25	2431.67	2755258.25	1468713.50	40.6166762	-106.3815850	0.00	
8200.00†	21.285	69.024	7716.22	-323.25	945.24	2465.56	2755292.27	1468726.16	40.6167118	-106.3814629	0.00	
8294.41	21.285	69.024	7804.19	-327.45	957.51	2497.56	2755324.40	1468738.10	40.6167455	-106.3813476	0.00	KOP
8300.00†	21.128	70.181	7809.40	-327.68	958.22	2499.46	2755326.30	1468738.79	40.6167474	-106.3813408	8.00	
8400.00†	19.800	92.888	7903.24	-324.61	963.48	2533.38	2755360.27	1468743.71	40.6167619	-106.3812186	8.00	
8500.00†	21.460	115.241	7996.97	-308.12	954.81	2566.90	2755393.70	1468734.71	40.6167381	-106.3810979	8.00	
8600.00†	25.531	132.633	8088.77	-278.53	932.38	2599.35	2755425.92	1468711.95	40.6166765	-106.3809810	8.00	



# Planned Wellpath Report

JANET 0780 11S-4H9 (REV-C.0) PWP

Page 4 of 8



## REFERENCE WELLPATH IDENTIFICATION

Operator	FULCRUM ENERGY OPERATING	Well	JANET 0780 11S-4H9
Field	JACKSON COUNTY (NAD83/TN)	API	05-057-06642
Facility	SEC.04-T07N-R80W	Wellbore	JANET 0780 11S-4H9 PWB
Slot	SLOT#05 JANET 0780 11S-4H9 (377'FNL & 839'FEL,SEC.04)		

## WELLPATH DATA (224 stations) † = interpolated, ‡ = extrapolated station

MD [ft]	Inclination [°]	Azimuth [°]	TVD [ft]	Vert Sect [ft]	North [ft]	East [ft]	Grid East [US ft]	Grid North [US ft]	Latitude	Longitude	DLS [°/100ft]	Comments
8700.00†	31.078	144.863	8176.85	-236.41	896.62	2630.11	2755456.32	1468675.89	40.6165783	-106.3808702	8.00	
8800.00†	37.447	153.499	8259.50	-182.59	848.23	2658.57	2755484.30	1468627.21	40.6164455	-106.3807677	8.00	
8900.00†	44.283	159.873	8335.12	-118.10	788.15	2684.19	2755509.31	1468566.88	40.6162806	-106.3806754	8.00	
9000.00†	51.394	164.829	8402.22	-44.21	717.54	2706.47	2755530.88	1468496.05	40.6160868	-106.3805952	8.00	
9100.00†	58.676	168.877	8459.50	37.65	637.79	2724.96	2755548.57	1468416.12	40.6158679	-106.3805287	8.00	
9200.00†	66.067	172.338	8505.86	125.88	550.45	2739.32	2755562.05	1468328.64	40.6156281	-106.3804770	8.00	
9300.00†	73.527	175.420	8540.38	218.76	457.21	2749.26	2755571.05	1468235.31	40.6153722	-106.3804412	8.00	
9400.00†	81.028	178.272	8562.39	314.50	359.89	2754.58	2755575.40	1468137.94	40.6151051	-106.3804221	8.00	
9486.46	87.532	180.641	8571.00 <sup>1</sup>	398.13	273.92	2755.39	2755575.34	1468051.97	40.6148691	-106.3804192	8.00	LP
9500.00†	87.532	180.641	8571.58	411.22	260.39	2755.24	2755575.05	1468038.45	40.6148320	-106.3804198	0.00	
9600.00†	87.532	180.641	8575.89	507.91	160.49	2754.12	2755572.93	1467938.56	40.6145578	-106.3804238	0.00	
9700.00†	87.532	180.641	8580.20	604.60	60.59	2753.00	2755570.81	1467838.68	40.6142836	-106.3804279	0.00	
9800.00†	87.532	180.641	8584.50	701.29	-39.31	2751.88	2755568.69	1467738.80	40.6140094	-106.3804320	0.00	
9900.00†	87.532	180.641	8588.81	797.98	-139.22	2750.77	2755566.57	1467638.92	40.6137351	-106.3804360	0.00	
10000.00†	87.532	180.641	8593.12	894.66	-239.12	2749.65	2755564.45	1467539.03	40.6134609	-106.3804401	0.00	
10100.00†	87.532	180.641	8597.42	991.35	-339.02	2748.53	2755562.33	1467439.15	40.6131867	-106.3804442	0.00	
10200.00†	87.532	180.641	8601.73	1088.04	-438.92	2747.41	2755560.21	1467339.27	40.6129125	-106.3804482	0.00	
10300.00†	87.532	180.641	8606.04	1184.73	-538.82	2746.30	2755558.09	1467239.39	40.6126383	-106.3804523	0.00	
10400.00†	87.532	180.641	8610.34	1281.41	-638.72	2745.18	2755555.97	1467139.51	40.6123641	-106.3804564	0.00	
10431.54	87.532	180.641	8611.70 <sup>2</sup>	1311.91	-670.23	2744.83	2755555.30	1467108.00	40.6122776	-106.3804576	0.00	WP1
10500.00†	88.901	180.669	8613.83	1378.13	-738.65	2744.04	2755553.83	1467039.59	40.6120898	-106.3804605	2.00	
10599.96	90.899	180.711	8614.01	1474.83	-838.59	2742.84	2755551.62	1466939.67	40.6118155	-106.3804649	2.00	3D Arc (J)
10600.00†	90.899	180.711	8614.00	1474.88	-838.64	2742.84	2755551.62	1466939.63	40.6118154	-106.3804649	0.00	
10700.00†	90.899	180.711	8612.44	1571.61	-938.62	2741.60	2755549.38	1466839.67	40.6115409	-106.3804694	0.00	
10800.00†	90.899	180.711	8610.87	1668.35	-1038.60	2740.36	2755547.13	1466739.71	40.6112665	-106.3804739	0.00	
10900.00†	90.899	180.711	8609.30	1765.08	-1138.58	2739.12	2755544.89	1466639.75	40.6109921	-106.3804784	0.00	
11000.00†	90.899	180.711	8607.73	1861.82	-1238.56	2737.88	2755542.65	1466539.79	40.6107177	-106.3804829	0.00	
11100.00†	90.899	180.711	8606.16	1958.55	-1338.54	2736.64	2755540.40	1466439.83	40.6104433	-106.3804874	0.00	
11200.00†	90.899	180.711	8604.59	2055.29	-1438.52	2735.40	2755538.16	1466339.87	40.6101688	-106.3804919	0.00	
11300.00†	90.899	180.711	8603.02	2152.02	-1538.50	2734.16	2755535.91	1466239.91	40.6098944	-106.3804964	0.00	
11400.00†	90.899	180.711	8601.45	2248.76	-1638.48	2732.92	2755533.67	1466139.95	40.6096200	-106.3805009	0.00	
11447.67	90.899	180.711	8600.70 <sup>3</sup>	2294.86	-1686.13	2732.33	2755532.60	1466092.30	40.6094892	-106.3805031	0.00	WP2
11464.95	91.245	180.704	8600.38	2311.59	-1703.42	2732.11	2755532.21	1466075.02	40.6094417	-106.3805038	2.00	3D Arc (J)
11500.00†	91.245	180.704	8599.62	2345.49	-1738.45	2731.68	2755531.43	1466039.99	40.6093456	-106.3805054	0.00	
11600.00†	91.245	180.704	8597.44	2442.21	-1838.42	2730.45	2755529.20	1465940.04	40.6090712	-106.3805099	0.00	
11700.00†	91.245	180.704	8595.27	2538.94	-1938.39	2729.23	2755526.97	1465840.09	40.6087968	-106.3805143	0.00	
11800.00†	91.245	180.704	8593.10	2635.67	-2038.36	2728.00	2755524.74	1465740.15	40.6085224	-106.3805188	0.00	
11900.00†	91.245	180.704	8590.92	2732.39	-2138.33	2726.77	2755522.50	1465640.20	40.6082480	-106.3805233	0.00	
12000.00†	91.245	180.704	8588.75	2829.12	-2238.30	2725.54	2755520.27	1465540.25	40.6079736	-106.3805277	0.00	
12100.00†	91.245	180.704	8586.58	2925.85	-2338.27	2724.31	2755518.04	1465440.30	40.6076992	-106.3805322	0.00	
12200.00†	91.245	180.704	8584.41	3022.58	-2438.23	2723.08	2755515.81	1465340.35	40.6074248	-106.3805367	0.00	
12300.00†	91.245	180.704	8582.23	3119.30	-2538.20	2721.86	2755513.58	1465240.40	40.6071504	-106.3805411	0.00	
12400.00†	91.245	180.704	8580.06	3216.03	-2638.17	2720.63	2755511.35	1465140.45	40.6068760	-106.3805456	0.00	
12500.00†	91.245	180.704	8577.89	3312.76	-2738.14	2719.40	2755509.11	1465040.50	40.6066016	-106.3805500	0.00	
12600.00†	91.245	180.704	8575.71	3409.48	-2838.11	2718.17	2755506.88	1464940.55	40.6063272	-106.3805545	0.00	



# Planned Wellpath Report

JANET 0780 11S-4H9 (REV-C.0) PWP

Page 5 of 8



REFERENCE WELLPATH IDENTIFICATION			
Operator	FULCRUM ENERGY OPERATING	Well	JANET 0780 11S-4H9
Field	JACKSON COUNTY (NAD83/TN)	API	05-057-06642
Facility	SEC.04-T07N-R80W	Wellbore	JANET 0780 11S-4H9 PWB
Slot	SLOT#05 JANET 0780 11S-4H9 (377'FNL & 839'FEL,SEC.04)		

## WELLPATH DATA (224 stations) † = interpolated, ‡ = extrapolated station

MD [ft]	Inclination [°]	Azimuth [°]	TVD [ft]	Vert Sect [ft]	North [ft]	East [ft]	Grid East [US ft]	Grid North [US ft]	Latitude	Longitude	DLS [°/100ft]	Comments
12700.00†	91.245	180.704	8573.54	3506.21	-2938.08	2716.94	2755504.65	1464840.60	40.6060528	-106.3805590	0.00	
12800.00†	91.245	180.704	8571.37	3602.94	-3038.05	2715.72	2755502.42	1464740.66	40.6057784	-106.3805634	0.00	
12900.00†	91.245	180.704	8569.20	3699.66	-3138.02	2714.49	2755500.19	1464640.71	40.6055040	-106.3805679	0.00	
13000.00†	91.245	180.704	8567.02	3796.39	-3237.99	2713.26	2755497.96	1464540.76	40.6052296	-106.3805724	0.00	
13100.00†	91.245	180.704	8564.85	3893.12	-3337.95	2712.03	2755495.72	1464440.81	40.6049553	-106.3805768	0.00	
13200.00†	91.245	180.704	8562.68	3989.85	-3437.92	2710.80	2755493.49	1464340.86	40.6046809	-106.3805813	0.00	
13300.00†	91.245	180.704	8560.50	4086.57	-3537.89	2709.58	2755491.26	1464240.91	40.6044065	-106.3805857	0.00	
13400.00†	91.245	180.704	8558.33	4183.30	-3637.86	2708.35	2755489.03	1464140.96	40.6041321	-106.3805902	0.00	
13500.00†	91.245	180.704	8556.16	4280.03	-3737.83	2707.12	2755486.80	1464041.01	40.6038577	-106.3805947	0.00	
13600.00†	91.245	180.704	8553.99	4376.75	-3837.80	2705.89	2755484.57	1463941.06	40.6035833	-106.3805991	0.00	
13700.00†	91.245	180.704	8551.81	4473.48	-3937.77	2704.66	2755482.33	1463841.11	40.6033089	-106.3806036	0.00	
13800.00†	91.245	180.704	8549.64	4570.21	-4037.74	2703.44	2755480.10	1463741.17	40.6030345	-106.3806081	0.00	
13900.00†	91.245	180.704	8547.47	4666.93	-4137.71	2702.21	2755477.87	1463641.22	40.6027601	-106.3806125	0.00	
14000.00†	91.245	180.704	8545.29	4763.66	-4237.67	2700.98	2755475.64	1463541.27	40.6024857	-106.3806170	0.00	
14100.00†	91.245	180.704	8543.12	4860.39	-4337.64	2699.75	2755473.41	1463441.32	40.6022113	-106.3806214	0.00	
14200.00†	91.245	180.704	8540.95	4957.12	-4437.61	2698.52	2755471.18	1463341.37	40.6019369	-106.3806259	0.00	
14243.69	91.245	180.704	8540.00 <sup>‡</sup>	4999.38	-4481.29	2697.99	2755470.20	1463297.70	40.6018170	-106.3806278	0.00	WP3
14300.00†	92.371	180.704	8538.22	5053.83	-4537.56	2697.29	2755468.94	1463241.44	40.6016626	-106.3806304	2.00	
14400.00†	94.371	180.705	8532.34	5150.40	-4637.38	2696.07	2755466.71	1463141.64	40.6013886	-106.3806348	2.00	
14500.00†	96.371	180.705	8522.98	5246.72	-4736.93	2694.84	2755464.49	1463042.11	40.6011154	-106.3806393	2.00	
14600.00†	98.371	180.706	8510.15	5342.67	-4836.09	2693.62	2755462.27	1462942.97	40.6008432	-106.3806437	2.00	
14700.00†	100.371	180.706	8493.87	5438.12	-4934.74	2692.41	2755460.07	1462844.34	40.6005724	-106.3806481	2.00	
14800.00†	102.371	180.707	8474.16	5532.97	-5032.77	2691.20	2755457.88	1462746.33	40.6003033	-106.3806525	2.00	
14872.67	103.825	180.707	8457.69	5601.44	-5103.54	2690.33	2755456.29	1462675.58	40.6001091	-106.3806557	2.00	3D Arc (J)
14900.00†	103.825	180.707	8451.16	5627.12	-5130.07	2690.00	2755455.70	1462649.04	40.6000362	-106.3806569	0.00	
15000.00†	103.825	180.707	8427.26	5721.06	-5227.17	2688.80	2755453.53	1462551.97	40.5997697	-106.3806612	0.00	
15100.00†	103.825	180.707	8403.37	5815.01	-5324.27	2687.60	2755451.35	1462454.89	40.5995032	-106.3806656	0.00	
15200.00†	103.825	180.707	8379.47	5908.96	-5421.36	2686.40	2755449.18	1462357.82	40.5992367	-106.3806699	0.00	
15300.00†	103.825	180.707	8355.58	6002.90	-5518.46	2685.20	2755447.01	1462260.74	40.5989702	-106.3806743	0.00	
15400.00†	103.825	180.707	8331.68	6096.85	-5615.55	2684.01	2755444.83	1462163.66	40.5987037	-106.3806786	0.00	
15500.00†	103.825	180.707	8307.79	6190.79	-5712.65	2682.81	2755442.66	1462066.59	40.5984372	-106.3806830	0.00	
15600.00†	103.825	180.707	8283.89	6284.74	-5809.75	2681.61	2755440.49	1461969.51	40.5981707	-106.3806873	0.00	
15700.00†	103.825	180.707	8260.00	6378.68	-5906.84	2680.41	2755438.31	1461872.43	40.5979042	-106.3806917	0.00	
15800.00†	103.825	180.707	8236.10	6472.63	-6003.94	2679.21	2755436.14	1461775.36	40.5976377	-106.3806960	0.00	
15900.00†	103.825	180.707	8212.21	6566.58	-6101.03	2678.02	2755433.97	1461678.28	40.5973711	-106.3807004	0.00	
16000.00†	103.825	180.707	8188.31	6660.52	-6198.13	2676.82	2755431.80	1461581.20	40.5971046	-106.3807048	0.00	
16100.00†	103.825	180.707	8164.42	6754.47	-6295.22	2675.62	2755429.62	1461484.13	40.5968381	-106.3807091	0.00	
16200.00†	103.825	180.707	8140.52	6848.41	-6392.32	2674.42	2755427.45	1461387.05	40.5965716	-106.3807135	0.00	
16300.00†	103.825	180.707	8116.63	6942.36	-6489.42	2673.22	2755425.28	1461289.97	40.5963051	-106.3807178	0.00	
16400.00†	103.825	180.707	8092.73	7036.31	-6586.51	2672.02	2755423.10	1461192.90	40.5960386	-106.3807222	0.00	
16464.59	103.825	180.707	8077.30 <sup>‡</sup>	7096.98	-6649.22	2671.25	2755421.70	1461130.20	40.5958665	-106.3807250	0.00	WP4
16500.00†	103.116	180.706	8069.05	7130.30	-6683.66	2670.83	2755420.93	1461095.77	40.5957720	-106.3807265	2.00	
16580.33	101.510	180.704	8051.92	7206.23	-6762.13	2669.86	2755419.18	1461017.31	40.5955566	-106.3807300	2.00	3D Arc (XS)
16600.00†	101.510	180.704	8048.00	7224.88	-6781.41	2669.62	2755418.75	1460998.04	40.5955037	-106.3807309	0.00	
16700.00†	101.510	180.704	8028.04	7319.68	-6879.39	2668.42	2755416.56	1460900.08	40.5952347	-106.3807353	0.00	



# Planned Wellpath Report

JANET 0780 11S-4H9 (REV-C.0) PWP

Page 6 of 8



REFERENCE WELLPATH IDENTIFICATION			
Operator	FULCRUM ENERGY OPERATING	Well	JANET 0780 11S-4H9
Field	JACKSON COUNTY (NAD83/TN)	API	05-057-06642
Facility	SEC.04-T07N-R80W	Wellbore	JANET 0780 11S-4H9 PWB
Slot	SLOT#05 JANET 0780 11S-4H9 (377'FNL & 839'FEL,SEC.04)		

## WELLPATH DATA (224 stations) † = interpolated, ‡ = extrapolated station

MD [ft]	Inclination [°]	Azimuth [°]	TVD [ft]	Vert Sect [ft]	North [ft]	East [ft]	Grid East [US ft]	Grid North [US ft]	Latitude	Longitude	DLS [°/100ft]	Comments
16800.00†	101.510	180.704	8008.09	7414.49	-6977.37	2667.21	2755414.37	1460802.12	40.5949658	-106.3807396	0.00	
16900.00†	101.510	180.704	7988.14	7509.29	-7075.35	2666.01	2755412.18	1460704.16	40.5946968	-106.3807440	0.00	
17000.00†	101.510	180.704	7968.18	7604.09	-7173.33	2664.81	2755409.99	1460606.19	40.5944279	-106.3807484	0.00	
17100.00†	101.510	180.704	7948.23	7698.90	-7271.31	2663.60	2755407.81	1460508.23	40.5941590	-106.3807528	0.00	
17200.00†	101.510	180.704	7928.28	7793.70	-7369.30	2662.40	2755405.62	1460410.27	40.5938900	-106.3807571	0.00	
17300.00†	101.510	180.704	7908.32	7888.51	-7467.28	2661.19	2755403.43	1460312.31	40.5936211	-106.3807615	0.00	
17400.00†	101.510	180.704	7888.37	7983.31	-7565.26	2659.99	2755401.24	1460214.35	40.5933521	-106.3807659	0.00	
17500.00†	101.510	180.704	7868.42	8078.11	-7663.24	2658.79	2755399.06	1460116.38	40.5930832	-106.3807703	0.00	
17600.00†	101.510	180.704	7848.46	8172.92	-7761.22	2657.58	2755396.87	1460018.42	40.5928142	-106.3807746	0.00	
17700.00†	101.510	180.704	7828.51	8267.72	-7859.20	2656.38	2755394.68	1459920.46	40.5925453	-106.3807790	0.00	
17800.00†	101.510	180.704	7808.56	8362.53	-7957.19	2655.17	2755392.49	1459822.50	40.5922764	-106.3807834	0.00	
17900.00†	101.510	180.704	7788.60	8457.33	-8055.17	2653.97	2755390.30	1459724.53	40.5920074	-106.3807877	0.00	
18000.00†	101.510	180.704	7768.65	8552.14	-8153.15	2652.76	2755388.12	1459626.57	40.5917385	-106.3807921	0.00	
18032.80	101.510	180.704	7762.10	8583.23	-8185.28	2652.37	2755387.40	1459594.44	40.5916503	-106.3807936	0.00	End of Tangent (XS)
18100.00†	100.166	180.704	7749.47	8647.09	-8251.28	2651.56	2755385.92	1459528.46	40.5914691	-106.3807965	2.00	
18200.00†	98.166	180.703	7733.54	8742.60	-8349.99	2650.35	2755383.72	1459429.77	40.5911982	-106.3808009	2.00	
18300.00†	96.166	180.703	7721.07	8838.59	-8449.20	2649.13	2755381.51	1459330.58	40.5909259	-106.3808053	2.00	
18400.00†	94.166	180.702	7712.06	8934.94	-8548.78	2647.91	2755379.29	1459231.02	40.5906525	-106.3808098	2.00	
18500.00†	92.166	180.702	7706.54	9031.54	-8648.62	2646.68	2755377.06	1459131.20	40.5903785	-106.3808142	2.00	
18525.23	91.661	180.702	7705.70 <sup>6</sup>	9055.93	-8673.82	2646.38	2755376.50	1459106.00	40.5903093	-106.3808153	2.00	WP5
18600.00†	91.661	180.702	7703.53	9128.24	-8748.56	2645.46	2755374.83	1459031.28	40.5901042	-106.3808187	0.00	
18700.00†	91.661	180.702	7700.63	9224.95	-8848.51	2644.24	2755372.61	1458931.35	40.5898298	-106.3808231	0.00	
18800.00†	91.661	180.702	7697.73	9321.66	-8948.46	2643.01	2755370.38	1458831.42	40.5895555	-106.3808275	0.00	
18900.00†	91.661	180.702	7694.84	9418.37	-9048.41	2641.79	2755368.15	1458731.49	40.5892811	-106.3808320	0.00	
19000.00†	91.661	180.702	7691.94	9515.08	-9148.36	2640.56	2755365.92	1458631.55	40.5890068	-106.3808364	0.00	
19100.00†	91.661	180.702	7689.04	9611.79	-9248.31	2639.34	2755363.70	1458531.62	40.5887325	-106.3808409	0.00	
19200.00†	91.661	180.702	7686.14	9708.50	-9348.27	2638.12	2755361.47	1458431.69	40.5884581	-106.3808453	0.00	
19225.51	91.661	180.702	7685.40 <sup>7</sup>	9733.18	-9373.76	2637.80	2755360.90	1458406.20	40.5883881	-106.3808465	0.00	WP6
19300.00†	93.151	180.704	7682.27	9805.18	-9448.18	2636.89	2755359.24	1458331.80	40.5881839	-106.3808498	2.00	
19400.00†	95.151	180.706	7675.04	9901.67	-9547.90	2635.66	2755357.01	1458232.09	40.5879101	-106.3808542	2.00	
19497.37	97.098	180.708	7664.65	9995.33	-9644.70	2634.47	2755354.85	1458135.32	40.5876444	-106.3808586	2.00	3D Arc (J)
19500.00†	97.098	180.708	7664.32	9997.86	-9647.32	2634.44	2755354.79	1458132.70	40.5876373	-106.3808587	0.00	
19600.00†	97.098	180.708	7651.96	10093.86	-9746.54	2633.21	2755352.56	1458033.50	40.5873649	-106.3808631	0.00	
19700.00†	97.098	180.708	7639.61	10189.87	-9845.77	2631.98	2755350.34	1457934.29	40.5870926	-106.3808676	0.00	
19764.80	97.098	180.708	7631.60 <sup>8</sup>	10252.08	-9910.07	2631.19	2755348.90	1457870.00	40.5869161	-106.3808705	0.00	WP7
19786.54	96.663	180.700	7629.00	10272.97	-9931.65	2630.92	2755348.42	1457848.42	40.5868568	-106.3808715	2.00	3D Arc (J)
19800.00†	96.663	180.700	7627.43	10285.90	-9945.02	2630.76	2755348.12	1457835.06	40.5868201	-106.3808720	0.00	
19900.00†	96.663	180.700	7615.83	10381.99	-10044.33	2629.54	2755345.91	1457735.76	40.5865475	-106.3808765	0.00	
20000.00†	96.663	180.700	7604.23	10478.09	-10143.65	2628.33	2755343.70	1457636.47	40.5862749	-106.3808809	0.00	
20100.00†	96.663	180.700	7592.62	10574.19	-10242.97	2627.12	2755341.49	1457537.17	40.5860023	-106.3808853	0.00	
20200.00†	96.663	180.700	7581.02	10670.29	-10342.28	2625.90	2755339.28	1457437.87	40.5857297	-106.3808897	0.00	
20300.00†	96.663	180.700	7569.42	10766.39	-10441.60	2624.69	2755337.07	1457338.57	40.5854571	-106.3808941	0.00	
20400.00†	96.663	180.700	7557.81	10862.48	-10540.92	2623.48	2755334.86	1457239.28	40.5851845	-106.3808985	0.00	
20424.23	96.663	180.700	7555.00 <sup>9</sup>	10885.77	-10564.98	2623.18	2755334.32	1457215.22	40.5851185	-106.3808996	0.00	BHL



# Planned Wellpath Report

JANET 0780 11S-4H9 (REV-C.0) PWP

Page 7 of 8



## REFERENCE WELLPATH IDENTIFICATION

Operator	FULCRUM ENERGY OPERATING	Well	JANET 0780 11S-4H9
Field	JACKSON COUNTY (NAD83/TN)	API	05-057-06642
Facility	SEC.04-T07N-R80W	Wellbore	JANET 0780 11S-4H9 PWB
Slot	SLOT#05 JANET 0780 11S-4H9 (377'FNL & 839'FEL,SEC.04)		

## TARGETS

Name	MD [ft]	TVD [ft]	North [ft]	East [ft]	Grid East [US ft]	Grid North [US ft]	Latitude	Longitude	Shape
SEC.04-T07N-R80W	N/A	6.50	420.14	498.82	2753320.41	1468220.84	40.6152709	-106.3885471	polygon
2D Polygon: dimensions not calculated									
SEC.05-T07N-R80W	N/A	6.50	410.14	498.82	2753320.31	1468210.84	40.6152434	-106.3885471	polygon
2D Polygon: dimensions not calculated									
SEC.09-T07N-R80W	N/A	6.50	399.19	498.01	2753319.39	1468199.90	40.6152134	-106.3885500	polygon
2D Polygon: dimensions not calculated									
SEC.33-T08N-R80W	N/A	6.50	430.14	498.82	2753320.51	1468230.84	40.6152983	-106.3885471	polygon
2D Polygon: dimensions not calculated									
JANET 0780 11S-4H9 BHL Rev-2 (211'FSL & 1977'FWL,SEC.09)	N/A	7555.00	-10453.68	2624.54	2755336.80	1457326.50	40.5854240	-106.3808946	point
9) JANET 0780 11S-4H9 BHL Rev-3 (100'FSL & 1976'FWL,SEC.09)	20424.23	7555.00	-10564.98	2623.18	2755334.32	1457215.22	40.5851185	-106.3808996	point
8) JANET 0780 11S-4H9 WP7	19764.80	7631.60	-9910.07	2631.19	2755348.90	1457870.00	40.5869161	-106.3808705	point
7) JANET 0780 11S-4H9 WP6	19225.51	7685.40	-9373.76	2637.80	2755360.90	1458406.20	40.5883881	-106.3808465	point
6) JANET 0780 11S-4H9 WP5	18525.23	7705.70	-8673.82	2646.38	2755376.50	1459106.00	40.5903093	-106.3808153	point
5) JANET 0780 11S-4H9 WP4	16464.59	8077.30	-6649.22	2671.25	2755421.70	1461130.20	40.5958665	-106.3807250	point
4) JANET 0780 11S-4H9 WP3	14243.69	8540.00	-4481.29	2697.99	2755470.20	1463297.70	40.6018170	-106.3806278	point
JANET 0780 11S-4H9 LP Rev-2 (40'FNL & 1904'FWL,SEC.04)	N/A	8571.00	333.56	2756.05	2755576.60	1468111.60	40.6150328	-106.3804168	point
1) JANET 0780 11S-4H9 LP Rev-3 (100'FNL & 1907'FWL,SEC.04)	9486.46	8571.00	273.92	2755.39	2755575.34	1468051.97	40.6148691	-106.3804192	point

## TARGETS

Name	MD [ft]	TVD [ft]	North [ft]	East [ft]	Grid East [US ft]	Grid North [US ft]	Latitude	Longitude	Shape
3) JANET 0780 11S-4H9 WP2	11447.67	8600.70	-1686.13	2732.33	2755532.60	1466092.30	40.6094892	-106.3805031	point
2) JANET 0780 11S-4H9 WP1	10431.54	8611.70	-670.23	2744.83	2755555.30	1467108.00	40.6122776	-106.3804576	point
JANET 0780 S5 Hardlines (300'FWL & 100'FSL)	N/A	9000.00	399.19	498.01	2753319.39	1468199.90	40.6152134	-106.3885500	polygon
2D Polygon: dimensions not calculated									

**SURVEY PROGRAM - Ref Wellbore: JANET 0780 11S-4H9 PWB    Ref Wellpath: JANET 0780 11S-4H9 (REV-C.0) PWP**

Start MD [ft]	End MD [ft]	Positional Uncertainty Model	Log Name/Comment	Wellbore
25.50	5071.19	OWSG MWD rev2 - Standard		JANET 0780 11S-4H9 PWB
5071.19	20424.23	BH AutoTrak Curve/eXpress (2019) (HRGM, Short spacing)		JANET 0780 11S-4H9 PWB



# Planned Wellpath Report

JANET 0780 11S-4H9 (REV-C.0) PWP

Page 8 of 8



## REFERENCE WELLPATH IDENTIFICATION

Operator	FULCRUM ENERGY OPERATING	Well	JANET 0780 11S-4H9
Field	JACKSON COUNTY (NAD83/TN)	API	05-057-06642
Facility	SEC.04-T07N-R80W	Wellbore	JANET 0780 11S-4H9 PWB
Slot	SLOT#05 JANET 0780 11S-4H9 (377'FNL & 839'FEL,SEC.04)		

## DESIGN COMMENTS

MD [ft]	Inclination [°]	Azimuth [°]	TVD [ft]	Comment
25.50	0.000	69.024	25.50	Tie On
400.00	0.000	69.024	400.00	End of Tangent
1464.25	21.285	69.024	1439.94	Build (XS)
8294.41	21.285	69.024	7804.19	KOP
9486.46	87.532	180.641	8571.00	LP
10431.54	87.532	180.641	8611.70	WP1
10599.96	90.899	180.711	8614.01	3D Arc (J)
11447.67	90.899	180.711	8600.70	WP2
11464.95	91.245	180.704	8600.38	3D Arc (J)
14243.69	91.245	180.704	8540.00	WP3
14872.67	103.825	180.707	8457.69	3D Arc (J)
16464.59	103.825	180.707	8077.30	WP4
16580.33	101.510	180.704	8051.92	3D Arc (XS)
18032.80	101.510	180.704	7762.10	End of Tangent (XS)
18525.23	91.661	180.702	7705.70	WP5
19225.51	91.661	180.702	7685.40	WP6
19497.37	97.098	180.708	7664.65	3D Arc (J)
19764.80	97.098	180.708	7631.60	WP7
19786.54	96.663	180.700	7629.00	3D Arc (J)
20424.23	96.663	180.700	7555.00	BHL