

NOBLE ENERGY, INC

Second Quarter 2025 Groundwater Monitoring Summary

August 20, 2025

REI 25-10

SWSW Sec 10, T3N, R65W

Remediation # 34864

This groundwater monitoring summary has been prepared by Fremont Environmental Inc. for the REI 25-10 location.

Site History and Background

Groundwater impacts were identified at the former REI 25-10 tank battery produced water vault (PWV) location during site decommissioning activities conducted on July 3, 2024. Five monitoring wells were installed on May 21, 2025 to delineate the magnitude and extent of dissolved-phase groundwater impacts at the former PWV location. A total of five soil borings were advanced utilizing a Geoprobe rig. The five borings were completed as flush-mounted, one-inch diameter monitoring wells. These monitoring wells are sampled quarterly.

Soil impacts were encountered in the vadose zone at 11 feet below ground surface in the MW-5 soil boring. The MW-5 11 Ft soil sample exceeded the ECMC Table 915-1 Protection of Groundwater Soil Screening Levels (PGSSLs) for 1,2,4 trimethylbenzene with a concentration of 0.723 mg/kg.

Groundwater Monitoring Activities

Groundwater sampling was completed at the location on May 21, 2025. Five monitoring wells (MW-1 to MW-5) were sampled and submitted to Pace Analytical Laboratory for analysis of benzene, toluene, ethylbenzene, total xylenes (BTEX), naphthalene, 1,2,4-trimethylbenzene (TMB), and 1,3,5-TMB by EPA Method 8260B and chloride ion & sulfate ion by EPA Method 9056A and Total Dissolved Solids (TDS) by EPA Method SM2540 C-2011.

The laboratory analytical results indicate that dissolved-phase organic constituents are compliant with their respective ECMC Table 915-1 standards in all wells sampled. Concentrations of organic compounds exceeding the ECMC Table 915-1 standards were not observed in any of the five monitoring wells sampled during the Q2 2025 quarterly groundwater monitoring event. Further, the laboratory analytical results indicate that Table 915-1 inorganic constituents were compliant with their respective standards and/or calculated background concentrations in four of the five wells sampled. One of the five monitoring wells sampled (MW-5) was reported with a sulfate concentration exceeding the ECMC Table 915-1 standards. A background monitoring well(s) has not been established to characterize native groundwater concentrations of Table 915-1 inorganic constituents. The groundwater analytical data are summarized in Tables 6 and 7. The site location is illustrated on Figure 1, monitoring well locations are illustrated on Figure 2, groundwater elevations are illustrated on Figure 3, and groundwater chemistry is illustrated on Figure 4. A copy of the laboratory report, quality control data, and chain-of-custody documentation is included separately.

Current Remediation Strategy and Path Forward

Monitored natural attenuation (MNA) will be implemented at the site to address dissolved-phase groundwater impacts encountered during the REI 25-10 facility decommissioning activities. A monitoring well will be installed upgradient of the release area, north of MW-2, to characterize native groundwater conditions. Three additional soil borings will be advanced north, south, and west of MW-5 to delineate the magnitude and extent of soil impacts exceeding the Table 915-1 soil standards within the unsaturated zone. A no further action designation will be requested from the ECMC when remediation criteria have been achieved, and following the observation of four consecutive quarters of groundwater compliant with the applicable ECMC Table 915-1 standards under static conditions at the site. The Q2 2025 sampling event marks the first quarter of ECMC-compliant groundwater at the site for organic compounds.

TABLE OF CONTENTS

Tables

- 1 Field Data Summary Table
- 2 Summary of Volatile Organic Compounds
- 3 Summary of Polycyclic Aromatic Hydrocarbon Soil Chemistry Data
- 4 Summary of Soil Suitability for Reclamation
- 5 Summary of Metals in Soil Chemistry
- 6 Summary of Groundwater Organic Chemistry Data
- 7 Summary of Groundwater Inorganic Chemistry Data

Q2 2025 Figures

- 1 Site Location Map
- 2 Organic Soil Chemistry Map
- 3 Inorganic Soil Chemistry Map
- 4 Inferred Groundwater Contour Map
- 5 Groundwater Chemistry Map

ANALYTICAL TABLES

TABLE 1
FIELD DATA SUMMARY TABLE
NOBLE 100322
REI 25-10, WELD COUNTY, COLORADO
REM # 34864

Sample ID	Sample Date	Depth (ft)	GPS Data		PDOP Value	VOC Concentration (ppm)
			Latitude	Longitude		
AST01-0.5FT	07/03/2024	0.5Ft	40.2311324	-104.6584076	0.8	0.1
AST02-0.5FT	07/03/2024	0.5Ft	40.2310845	-104.6584017	0.8	0.1
AST03-0.5FT	07/03/2024	0.5Ft	40.2310841	-104.6583352	0.8	0.4
PWV B-5FT	07/03/2024	5Ft	40.2311997	-104.6583374	0.8	0.3
PWV W Wall-4FT	07/03/2024	4Ft	40.2312080	-104.6583634	0.8	2.3
SEP DL-3FT	07/03/2024	3Ft	40.2315491	-104.6583689	1.1	0.4
GWS	07/03/2024	5Ft	40.2311974	-104.6583414	0.7	-
MW-1	5/21/2025	8	40.231198	-104.658341	-	0.0
		20				0.0
MW-2	5/21/2025	11	40.231249	-104.658336	-	0.0
		20				27.5
MW-3	5/21/2025	11	40.231192	-104.658279	-	0.0
		20				0.0
MW-4	5/21/2025	11	40.231148	-104.658349	-	0.0
		20				0.0
MW-5	5/21/2025	11	40.231205	-104.658406	-	27.5
		20				0.0

1. Global Positioning System (GPS) data is provided in decimal degrees using North American Datum (NAD) 83 UTMZone 13 North.

2. Volatile organic compound (VOC) concentrations are measured in the field using a photoionization detector (PID).

PDOP = Position Dilution of Precision

ppm = Parts per million

in. = Inches

ft. = Feet

bgs = Below ground surface

TABLE 2
SUMMARY OF VOLATILE ORGANIC SOIL CHEMISTRY DATA
NOBLE 100322
REI 25-10, WELD COUNTY, COLORADO
REM # 34864

Sample ID	Sample Date	Depth (ft)	Benzene (mg/kg)	Toluene (mg/kg)	Ethyl-Benzene (mg/kg)	Xylenes (mg/kg)	1,2,4-Trimethyl-Benzene (mg/kg)	1,3,5-Trimethyl-Benzene (mg/kg)	Naphthalene (mg/kg)	TPH (mg/kg)	TPH GRO (mg/kg)	TPH DRO (mg/kg)	TPH ORO (mg/kg)
ECMC Table 915-1 Limits (Residential SSL)			1.2	490	5.8	58	30	27	2	500	500**		
ECMC Table 915-1 Limits (Protection of Groundwater SSL)			0.0026	0.69	0.78	9.9	0.0081	0.0087	0.0038	500	500**		
AST01-0.5FT	07/03/2024	0.5Ft	<0.0020	<0.0050	<0.0050	<0.010	<0.0050	<0.0050	<0.0038	<500	<0.50	<50	<50
AST02-0.5FT	07/03/2024	0.5Ft	<0.0020	<0.0050	<0.0050	<0.010	<0.0050	<0.0050	<0.0038	<500	<0.50	<50	<50
AST03-0.5FT	07/03/2024	0.5Ft	<0.0020	<0.0050	<0.0050	<0.010	<0.0050	<0.0050	<0.0038	<500	<0.50	<50	<50
PWV B-5FT	07/03/2024	5Ft	<0.0020	<0.0050	<0.0050	<0.010	<0.0050	<0.0050	<0.0038	<500	<0.50	<50	<50
PWV W Wall-4FT	07/03/2024	4Ft	<0.0020	<0.0050	0.0081	0.015	<0.0050	<0.0050	<0.0038	<500	<0.50	<50	<50
SEP DL-3FT	07/03/2024	3Ft	<0.0020	<0.0050	<0.0050	<0.010	<0.0050	<0.0050	<0.0038	<500	<0.50	<50	<50
MW-1 8FT	05/21/2025	8	<0.00100	<0.0100	<0.0100	<0.100	<0.00500	<0.00500	<0.00300	<500	<0.100	<4.00	<4.00
MW-1 20FT	05/21/2025	20	<0.00100	<0.0100	<0.0100	<0.100	<0.00500	<0.00500	<0.00300	<500	<0.100	<4.00	<4.00
MW-2 11FT	05/21/2025	11	<0.00100	<0.0100	<0.0100	<0.100	<0.00500	<0.00500	<0.00300	<500	<0.100	<4.00	<4.00
MW-2 20FT	05/21/2025	20	<0.00100	<0.0100	<0.0100	<0.100	<0.00500	<0.00500	<0.00300	<500	<0.100	<4.00	<4.00
MW-3 11FT	05/21/2025	11	<0.00100	<0.0100	<0.0100	<0.100	<0.00500	<0.00500	<0.00300	<500	<0.100	<4.00	<4.00
MW-3 20FT	05/21/2025	20	<0.00100	<0.0100	<0.0100	<0.100	<0.00500	<0.00500	<0.00300	<500	<0.100	<4.00	<4.00
MW-4 11FT	05/21/2025	11	<0.00100	<0.0100	<0.0100	<0.100	<0.00500	<0.00500	<0.00300	<500	<0.100	<4.00	<4.00
MW-4 20FT	05/21/2025	20	<0.00100	<0.0100	<0.0100	<0.100	<0.00500	<0.00500	<0.00300	<500	<0.100	<4.00	<4.00
MW-5 11FT	05/21/2025	11	<0.00400	<0.0400	<0.0400	<0.400	0.723	<0.0200	<0.00300	<500	61.3	46.7	24.8
MW-5 20FT	05/21/2025	20	<0.00100	<0.0100	<0.0100	<0.100	<0.00500	<0.00500	<0.00300	<500	<0.100	<4.00	<4.00

1. Bold values exceed the ECMC Table 915-1 limit(s)
 2. Red & blue highlighted soil analytical values indicate an exceedance of the referenced soil screening level (SSL)
 3. * Indicates laboratory minimum detection limit in excess of SSL
 4. ** Summation of GRO+DRO+ORO must be less than 500 mg/kg
- NA - Not analyzed

TABLE 3
SUMMARY OF POLYCYCLIC AROMATIC HYDROCARBON SOIL CHEMISTRY DATA
NOBLE 100322
REI 25-10, WELD COUNTY, COLORADO
REM # 34864

Sample ID	Sample Date	Depth (ft)	Acenaphthene (mg/kg)	Anthracene (mg/kg)	Benzo (a) Anthracene (mg/kg)	Benzo (a) Pyrene (mg/kg)	Benzo (b) Fluoranthene (mg/kg)	Benzo (k) Fluoranthene (mg/kg)	Chrysene (mg/kg)	Dibenzo (a,h) Anthracene (mg/kg)	Fluoranthene (mg/kg)	Fluorene (mg/kg)	Indeno (1,2,3-cd) Pyrene (mg/kg)	Pyrene (mg/kg)	1-Methyl - Naphthalene (mg/kg)	2-Methyl- Naphthalene (mg/kg)
ECMC Table 915-1 Limits (Residential SSL)			360	1800	1.1	0.11	1.1	11	110	0.11	240	240	1.1	180	18	24
ECMC Table 915-1 Limits (Protection of Groundwater SSL)			0.55	5.8	0.011	0.24	0.3	2.9	9	0.096	8.9	0.54	0.98	1.3	0.006	0.019
AST01-0.5FT	07/03/2024	0.5Ft	<0.00500	<0.00500	<0.00500	<0.00500	<0.00500	<0.00500	<0.00500	<0.00500	<0.00500	<0.00500	<0.00500	<0.00500	<0.00500	<0.00500
AST02-0.5FT	07/03/2024	0.5Ft	<0.00500	<0.00500	<0.00500	<0.00500	<0.00500	<0.00500	<0.00500	<0.00500	<0.00500	<0.00500	<0.00500	<0.00500	<0.00500	<0.00500
AST03-0.5FT	07/03/2024	0.5Ft	<0.00500	<0.00500	<0.00500	<0.00500	<0.00500	<0.00500	<0.00500	<0.00500	<0.00500	<0.00500	<0.00500	<0.00500	<0.00500	<0.00500
PWV B-5FT	07/03/2024	5Ft	<0.00500	<0.00500	<0.00500	<0.00500	<0.00500	<0.00500	<0.00500	<0.00500	<0.00500	<0.00500	<0.00500	<0.00500	<0.00500	<0.00500
PWV W Wall-4FT	07/03/2024	4Ft	<0.00500	<0.00500	<0.00500	<0.00500	<0.00500	<0.00500	<0.00500	<0.00500	<0.00500	<0.00500	<0.00500	<0.00500	<0.00500	<0.00500
SEP DL-3FT	07/03/2024	3Ft	<0.00500	<0.00500	<0.00500	<0.00500	<0.00500	<0.00500	<0.00500	<0.00500	<0.00500	<0.00500	<0.00500	<0.00500	<0.00500	<0.00500
MW-1 8FT	05/21/2025	8	<0.0330	<0.0330	<0.00600	<0.0330	<0.0330	<0.0330	<0.0330	<0.0330	<0.0330	<0.0330	<0.0330	<0.0330	<0.00300	<0.0120
MW-1 20FT	05/21/2025	20	<0.0330	<0.0330	<0.00600	<0.0330	<0.0330	<0.0330	<0.0330	<0.0330	<0.0330	<0.0330	<0.0330	<0.0330	<0.00300	<0.0120
MW-2 11FT	05/21/2025	11	<0.0330	<0.0330	<0.00600	<0.0330	<0.0330	<0.0330	<0.0330	<0.0330	<0.0330	<0.0330	<0.0330	<0.0330	<0.00300	<0.0120
MW-2 20FT	05/21/2025	20	<0.0330	<0.0330	<0.00600	<0.0330	<0.0330	<0.0330	<0.0330	<0.0330	<0.0330	<0.0330	<0.0330	<0.0330	<0.00300	<0.0120
MW-3 11FT	05/21/2025	11	<0.0330	<0.0330	<0.00600	<0.0330	<0.0330	<0.0330	<0.0330	<0.0330	<0.0330	<0.0330	<0.0330	<0.0330	<0.00300	<0.0120
MW-3 20FT	05/21/2025	20	<0.0330	<0.0330	<0.00600	<0.0330	<0.0330	<0.0330	<0.0330	<0.0330	<0.0330	<0.0330	<0.0330	<0.0330	<0.00300	<0.0120
MW-4 11FT	05/21/2025	11	<0.0330	<0.0330	<0.00600	<0.0330	<0.0330	<0.0330	<0.0330	<0.0330	<0.0330	<0.0330	<0.0330	<0.0330	<0.00300	<0.0120
MW-4 20FT	05/21/2025	20	<0.0330	<0.0330	<0.00600	<0.0330	<0.0330	<0.0330	<0.0330	<0.0330	<0.0330	<0.0330	<0.0330	<0.0330	<0.00300	<0.0120
MW-5 11FT	05/21/2025	11	<0.0330	<0.0330	<0.00600	<0.0330	<0.0330	<0.0330	<0.0330	<0.0330	<0.0330	<0.0330	<0.0330	<0.0330	0.0519	0.103
MW-5 20FT	05/21/2025	20	<0.0330	<0.0330	<0.00600	<0.0330	<0.0330	<0.0330	<0.0330	<0.0330	<0.0330	<0.0330	<0.0330	<0.0330	<0.00300	<0.0120

1. Bold values exceed the ECMC Table 915-1 limit(s)
 2. Red & blue highlighted soil analytical values indicate an exceedance of the referenced soil screening level (SSL)
 3. * Indicates laboratory minimum detection limit in excess of SSL
- NA - Not analyzed

TABLE 4
SUMMARY OF SOIL SUITABILITY FOR RECLAMATION
NOBLE 100322
REI 25-10, WELD COUNTY, COLORADO
REM # 34864

Sample ID	Sample Date	Depth (ft)	pH (Standard Units)	EC (mmhos/cm)	SAR (Standard Units)	Boron (mg/L)
ECMC Table 915-1 Soil Suitability Limits			6 - 8.3	<4	<6	2
AST01-0.5FT	07/03/2024	0.5Ft	9.17	0.181	0.403	<2.00
AST02-0.5FT	07/03/2024	0.5Ft	8.74	0.171	0.299	<2.00
AST03-0.5FT	07/03/2024	0.5Ft	8.88	0.0923	0.0544	<2.00
PWV B-5FT	07/03/2024	5Ft	8.42	0.174	0.288	<2.00
PWV W Wall-4FT	07/03/2024	4Ft	7.43	0.428	1.23	<2.00
SEP DL-3FT	07/03/2024	3Ft	6.69	0.0853	0.0359	<2.00
MW-1 8FT	05/21/2025	8	8.4	0.324	0.783	<0.200
MW-1 20FT	05/21/2025	20	8.42	0.429	2.78	0.296
MW-2 11FT	05/21/2025	11	8.65	0.17	0.405	<0.200
MW-2 20FT	05/21/2025	20	8.38	0.388	2.47	0.259
MW-3 11FT	05/21/2025	11	8.78	0.265	2.07	<0.200
MW-3 20FT	05/21/2025	20	8.4	0.397	2.47	0.226
MW-4 11FT	05/21/2025	11	8.44	0.286	0.287	<0.200
MW-4 20FT	05/21/2025	20	8.42	0.374	2.51	0.208
MW-5 11FT	05/21/2025	11	8.62	0.715	5.78	0.519
MW-5 20FT	05/21/2025	20	8.34	0.371	2.53	0.285
Maximum Background Concentration X Ft			NA	NA	NA	NA

1. **Bold** faced values exceed the ECMC Table 915-1 limit(s), but are within background concentrations.

2. **Bold** faced values exceed the ECMC Table 915-1 limit(s) and native background concentrations.

3. Brown highlighted soil analytical values indicate a regulatory exceedance.

NA - Not analyzed/Not applicable

TABLE 5
SUMMARY OF METALS IN SOIL CHEMISTRY DATA
NOBLE 100322
REI 25-10, WELD COUNTY, COLORADO
REM # 34864

Sample ID	Sample Date	Depth (ft)	Arsenic (mg/kg)	Barium (mg/kg)	Cadmium (mg/kg)	Chromium (VI) (mg/kg)	Copper (mg/kg)	Lead (mg/kg)	Nickel (mg/kg)	Selenium (mg/kg)	Silver (mg/kg)	Zinc (mg/kg)
ECMC Table 915-1 Limits (Residential SSL)			0.68	15000	71	0.3	3100	400	1500	390	390	23000
ECMC Table 915-1 Limits (Protection of Groundwater SSL)			0.29	82	0.38	0.00067	46	14	26	0.26	0.8	370
AST01-0.5FT	07/03/2024	0.5Ft	1.49	89.3	<0.200	<0.30	6.27	6.38	5.24	<0.260	0.0252	21.3
AST02-0.5FT	07/03/2024	0.5Ft	1.62	130	<0.200	<0.30	8.15	8.61	6.34	<0.260	0.0391	27.1
AST03-0.5FT	07/03/2024	0.5Ft	1.61	39.4	<0.200	<0.30	5.21	4.17	4.57	<0.260	<0.0200	16
PWV B-5FT	07/03/2024	5Ft	1.17	51.1	<0.200	<0.30	3.66	4.51	3.46	<0.260	<0.0200	14.9
PWV W Wall-4FT	07/03/2024	4Ft	1.43	76.7	<0.200	<0.30	5.87	5.57	4.97	<0.260	0.0229	21.1
SEP DL-3FT	07/03/2024	3Ft	1.13	41.1	<0.180	<0.30	3.47	4.66	3.38	<0.234	<0.0180	14.5
MW-1 8FT	05/21/2025	8	1.49	65.5	<0.100	<0.200	<10.0	<10.0	<10.0	0.127	<0.500	<50.0
MW-1 20FT	05/21/2025	20	5.29	69.5	0.19	<0.200	13.1	<10.0	13.8	0.202	<0.500	<50.0
MW-2 11FT	05/21/2025	11	3.06	92.9	0.133	0.331	<10.0	<10.0	<10.0	0.202	<0.500	<50.0
MW-2 20FT	05/21/2025	20	1.67	34.6	<0.100	<0.200	<10.0	<10.0	<10.0	<0.100	<0.500	<50.0
MW-3 11FT	05/21/2025	11	2.35	85.8	0.112	<0.200	<10.0	<10.0	<10.0	0.16	<0.500	<50.0
MW-3 20FT	05/21/2025	20	4.05	112	0.111	<0.200	11.3	<10.0	11.7	0.178	<0.500	<50.0
MW-4 11FT	05/21/2025	11	4.05	152	0.138	0.307	10.3	<10.0	11.7	0.167	<0.500	<50.0
MW-4 20FT	05/21/2025	20	5.19	118	0.204	0.204	13.7	10.7	15.4	0.256	<0.500	50.5
MW-5 11FT	05/21/2025	11	3.53	124	0.147	0.201	<10.0	<10.0	<10.0	0.214	<0.500	<50.0
MW-5 20FT	05/21/2025	20	4.05	59.3	0.127	0.239	10.8	<10.0	11.7	0.162	<0.500	<50.0
1.25x Maximum Background Concentration X Ft			NA	NA	NA	NA	NA	NA	NA	NA	NA	NA

1. **Bold** faced values exceed the ECMC Table 915-1 limit(s), but are within 1.25x background concentrations.
2. **Bold** faced values exceed the ECMC Table 915-1 limit(s) and native background concentrations.
3. Red & blue highlighted soil analytical values indicate an exceedance of the referenced soil screening level (SSL).
4. Non-detect background results accounted for in the highest background concentration by using the reporting limit.

ECMC = Energy & Carbon Management Commission

(<) = Analytical result is less than the indicated laboratory reporting limit.

mg/kg = Milligrams per kilogram

ft. = Feet

bgs = Below ground surface

* Indicates laboratory minimum detection limit in excess of SSL

NA - Not analyzed/Not applicable

TABLE 6
SUMMARY OF GROUNDWATER ELEVATION DATA AND ORGANIC CHEMISTRY DATA
NOBLE 100322
REI 25-10, WELD COUNTY, COLORADO
REM # 34864

Sample ID	Sample Date	Benzene (µg/L)	Toluene (µg/L)	Ethyl-Benzene (µg/L)	Xylenes (µg/L)	Naphthalene (µg/L)	1,2,4- Trimethyl- Benzene (µg/L)	1,3,5- Trimethyl- Benzene (µg/L)	TOC Elevation (ft)	Depth to Groundwater Below TOC (ft)	Groundwater Elevation (ft)	LNAPL Thickness (ft)
ECMC Table 915-1 Limits		5.0	560	700	1400	140	67	67				
GWS	07/03/2024	44	130	7.9	130	<1.0	10	8.0	N/A	N/A	N/A	NP
MW-1	05/21/25	<0.00100	<0.00100	<0.00100	<0.00300	<0.00500	<0.00100	<0.00100	99.94	12.92	87.02	NP
MW-2	05/21/25	<0.00100	<0.00100	<0.00100	<0.00300	<0.00500	<0.00100	<0.00100	100.06	NM	NM	NM
MW-3	05/22/25	<0.00100	<0.00100	<0.00100	<0.00300	<0.00500	<0.00100	<0.00100	101.06	12.92	86.75	NM
MW-4	05/23/25	<0.00100	<0.00100	<0.00100	<0.00300	<0.00500	<0.00100	<0.00100	102.06	13.27	86.73	NM
MW-5	05/21/25	<0.00100	<0.00100	<0.00100	<0.00300	<0.00500	0.0127	<0.00100	100.05	13.40	86.65	NP

1. Bold values exceed the ECMC limit(s)

2. Red highlighted groundwater analytical values indicate a regulatory exceedance

NP - No measurable LNAPL, NA - Not Analyzed, NL - No Limit, INA - Inaccessible, IW - Insufficient Water, DES - Destroyed

TABLE 7
SUMMARY OF INORGANIC GROUNDWATER CHEMISTRY DATA
OPERATOR (NOBLE 100322 OR PDC 69175)
REI 25-10, WELD COUNTY, COLORADO
REM # 34864

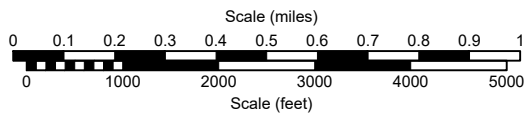
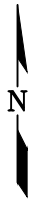
Sample ID	Sample Date	Total Dissolved Solids (mg/L)	Chloride Ion (mg/L)	Sulfate Ion (mg/L)
ECMC Table 915-1 Limits		<1.25 x local background	250 or <1.25 x local background	250 or <1.25 x local background
MW-1	5/21/25	1690	133	216
MW-2	5/21/25	1260	123	203
MW-3	5/22/25	1260	123	203
MW-4	5/23/25	1260	123	203
MW-5	5/21/25	2170	65.5	1150
Background Concentration (Current)		NA	NA	NA

1. Bold values exceed the ECMC limit(s)

2. Blue highlighted groundwater analytical values indicate a regulatory exceedance

NP - No measurable LNAPL, NA - Not Analyzed, INA - Inaccessible, IW - Insufficient Water, DES - Destroyed

FIGURES



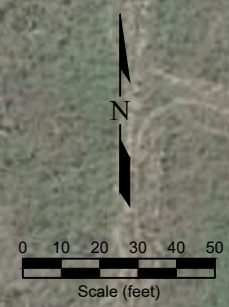
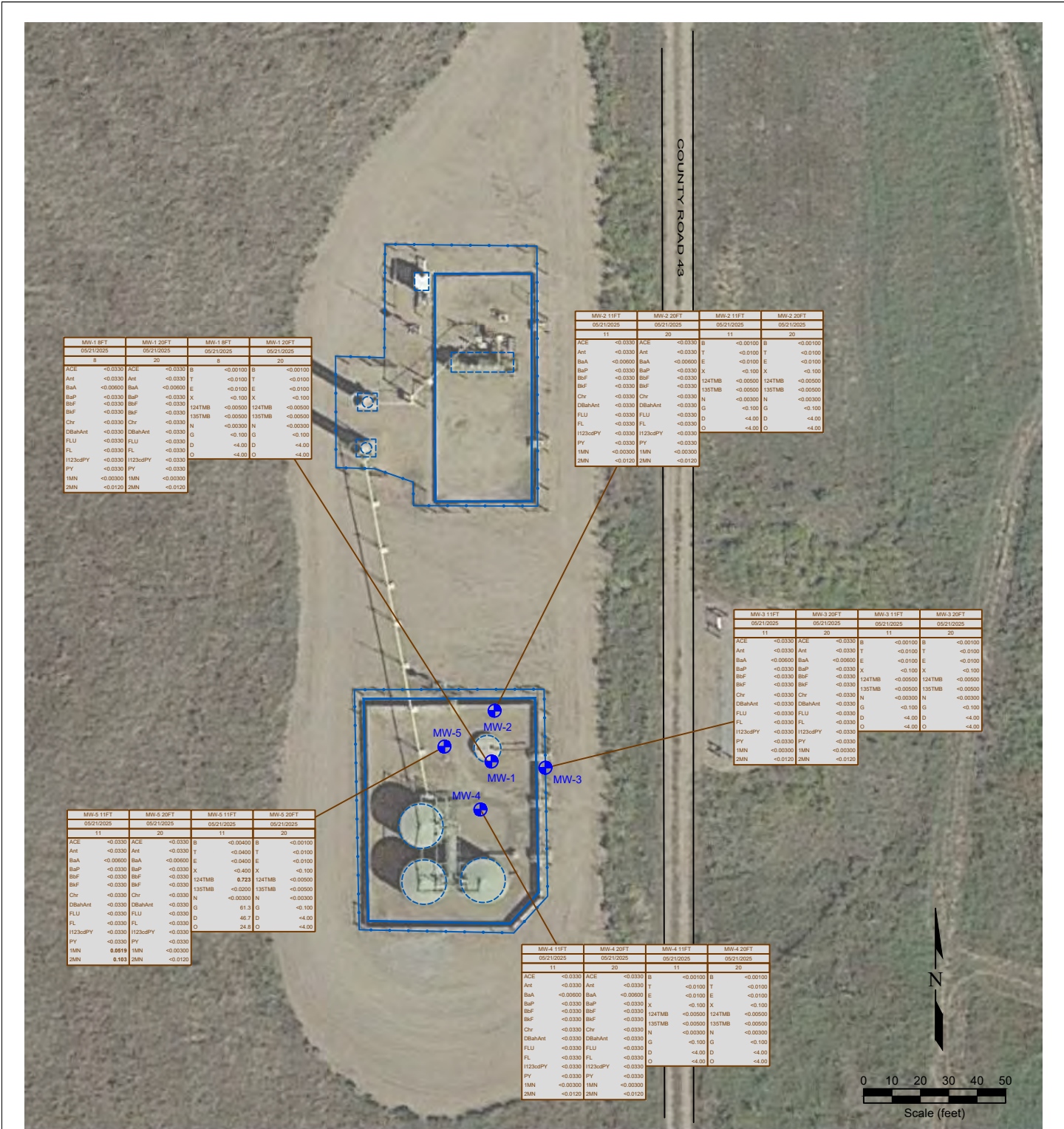
USGS 7.5 MINUTE SERIES (TOPOGRAPHIC)

Figure 1
SITE LOCATION MAP

Noble Energy, Inc. ~ Rei 25-10
 SWSW Sec. 10, T3N, R65W, 6th PM
 Weld County, Colorado
 40.231578°, -104.658323°

Project No. CO24-137	API #	Facility # 336608
Date 8/19/25	Remediation # 34864	Filename 24137T





LEGEND

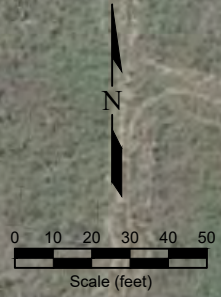
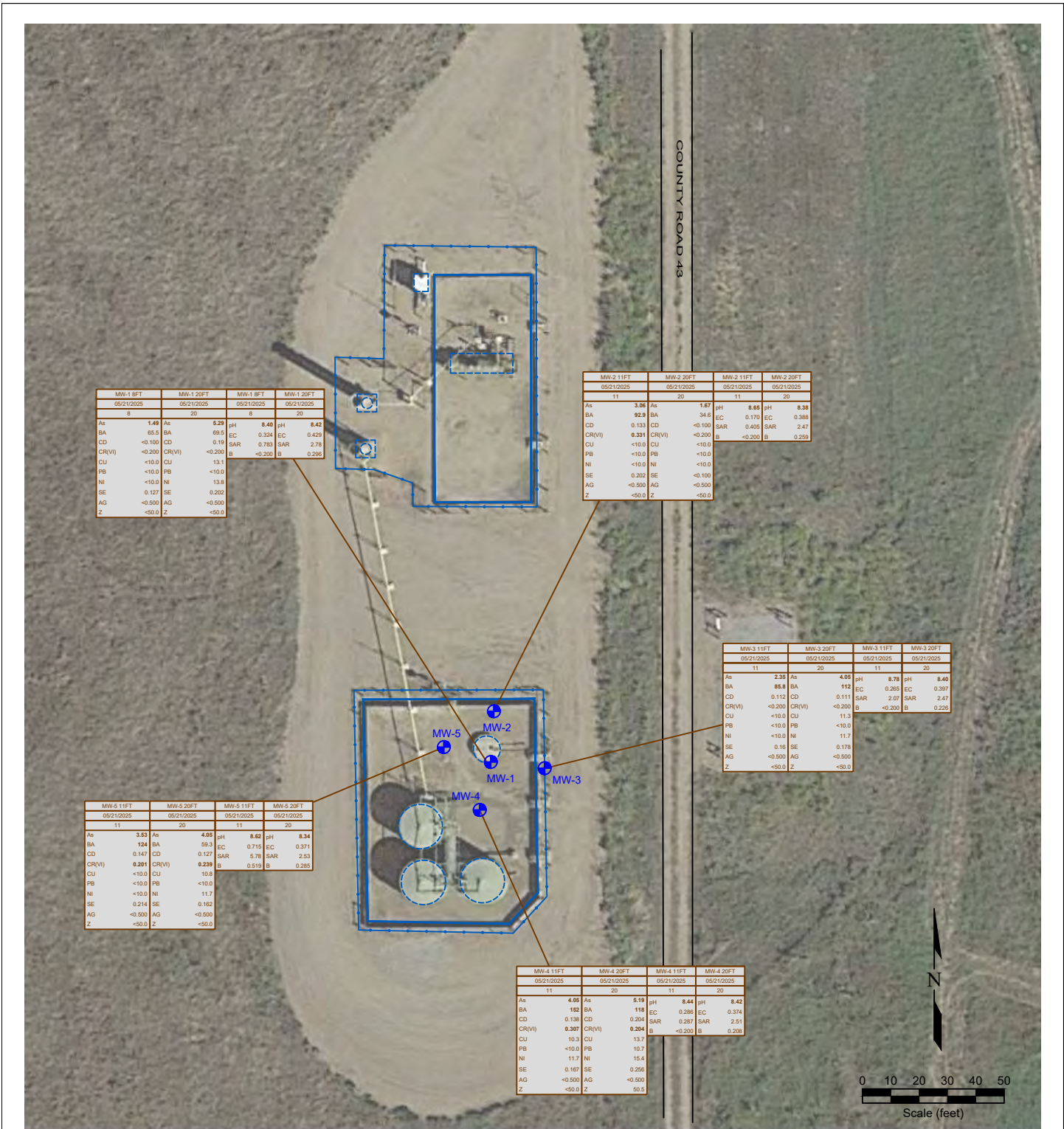
- WELL HEAD LOCATION
- ABOVE GROUND STORAGE TANK
- FORMER FACILITY
- FENCE LINE
- MONITORING WELL LOCATION
- ||||| CONTAINMENT BERM
- CONTAINMENT WALL

SAMPLE ID	DATE SAMPLED	DEPTH (ft)	SAMPLE ID	DATE SAMPLED	DEPTH (ft)
ACE	<0.00500		ACENAPHTHENE (mg/kg)		
Ant	<0.00500		ANTHRACENE (mg/kg)		
BaA	<0.00500		BENZO (A) ANTHRACENE (mg/kg)		
BaP	<0.00500		BENZO (A) PYRENE (mg/kg)		
BaP	<0.00500		BENZO (B) FLUORANTHENE (mg/kg)		
BaF	<0.00500		BENZO (K) FLUORANTHENE (mg/kg)		
Chr	<0.00500		CHRYSENE (mg/kg)		
DBaAnt	<0.00500		DIBENZ (A,H) ANTHRACENE (mg/kg)		
FLU	<0.00500		FLUORANTHENE (mg/kg)		
FL	<0.00500		FLUORENE (mg/kg)		
I123cPPY	<0.00500		INDENO (1,2,3-CD) PYRENE (mg/kg)		
PY	<0.00500		PYRENE (mg/kg)		
1MN	<0.00500		1-METHYLNAPHTHALENE (mg/kg)		
2MN	<0.00500		2-METHYLNAPHTHALENE (mg/kg)		

Figure 2
ORGANIC SOIL CHEMISTRY MAP
May 21, 2025

Noble Energy, Inc. ~ Rei 25-10
SWSW Sec. 10, T3N, R65W, 6th PM
Weld County, Colorado
40.231578°, -104.658323°

Project No. CO24-137	API #	Facility # 336608
Date 8/19/25	Remediation # 34864	Filename 24137Q



LEGEND

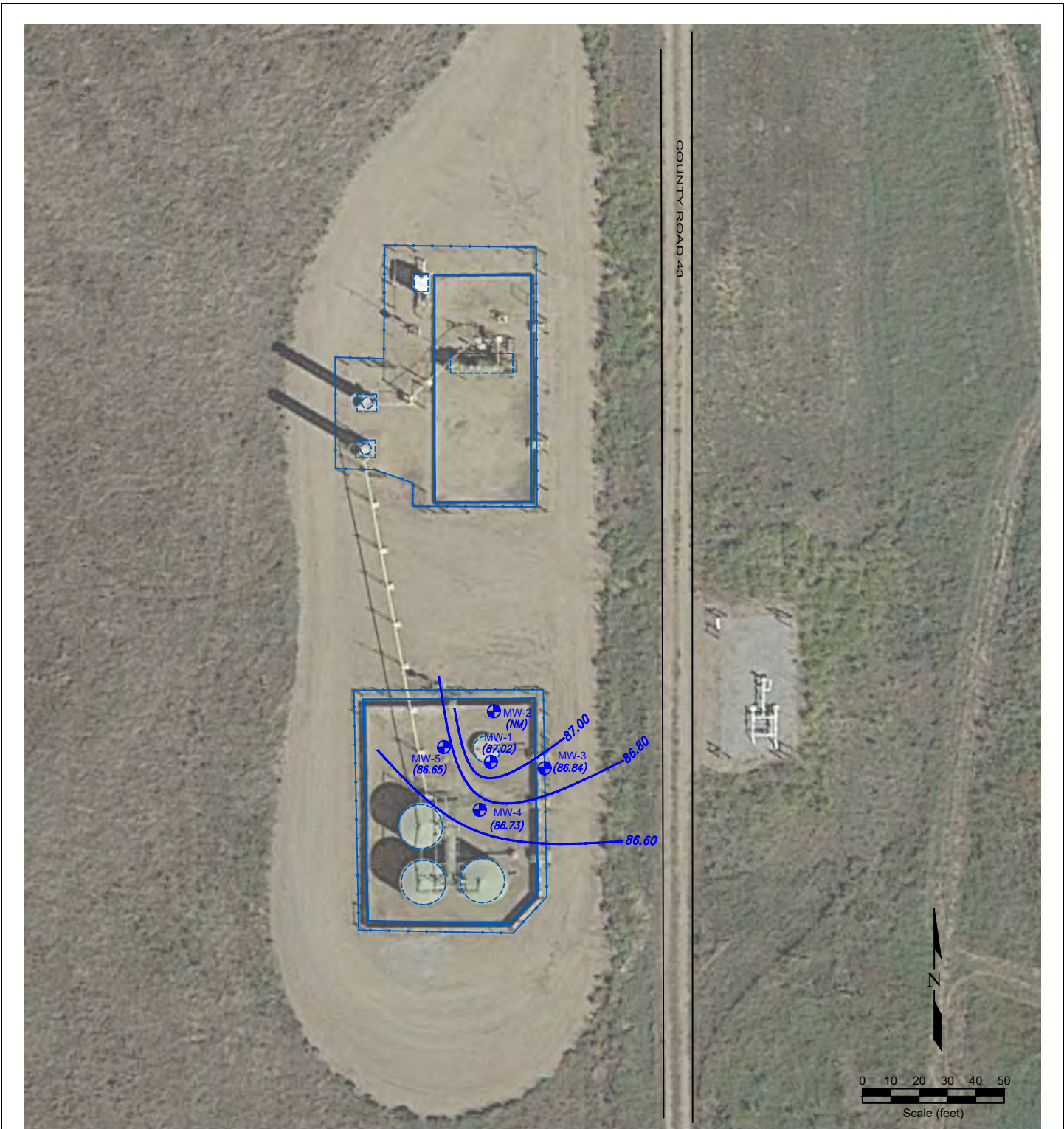
- WELL HEAD LOCATION
- ABOVE GROUND STORAGE TANK
- FORMER FACILITY
- FENCE LINE
- ⊕ MONITORING WELL LOCATION
- ||||| CONTAINMENT BERM
- CONTAINMENT WALL

SAMPLE DATE	SAMPLE ID	DEPTH (ft)	DATE SAMPLED	SAMPLE ID	DEPTH (ft)	DATE SAMPLED
As	<0.1	ARSENIC (mg/kg)	pH	<500	pH (pH units)	
BA	<0.1	BARIUM (mg/kg)	EC	7.00	EC (microhm/cm)	
CD	<0.01	CADMIUM (mg/kg)	SAR	<1	SAR (units)	
CR(VI)	<0.01	CHROMIUM (mg/kg)	B	<4	BORON (mg/L)	
CU	<0.01	COPPER (mg/kg)				
PB	<0.01	LEAD (mg/kg)				
NI	<0.01	NICKEL (mg/kg)				
SE	<0.1	SELENIUM (mg/kg)				
AG	<0.01	SILVER (mg/kg)				
Z	<0.02	ZINC (mg/kg)				

Figure 3
INORGANIC SOIL CHEMISTRY MAP
May 21, 2025

Noble Energy, Inc. ~ Rei 25-10
SWSW Sec. 10, T3N, R65W, 6th PM
Weld County, Colorado
40.231578°, -104.658323°

Project No. CO24-137	API #	Facility # 336608	
Date 8/19/25	Remediation # 34864	Filename 24137Q	



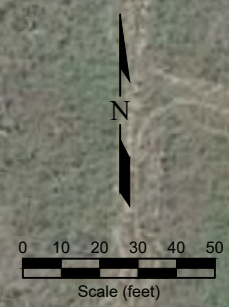
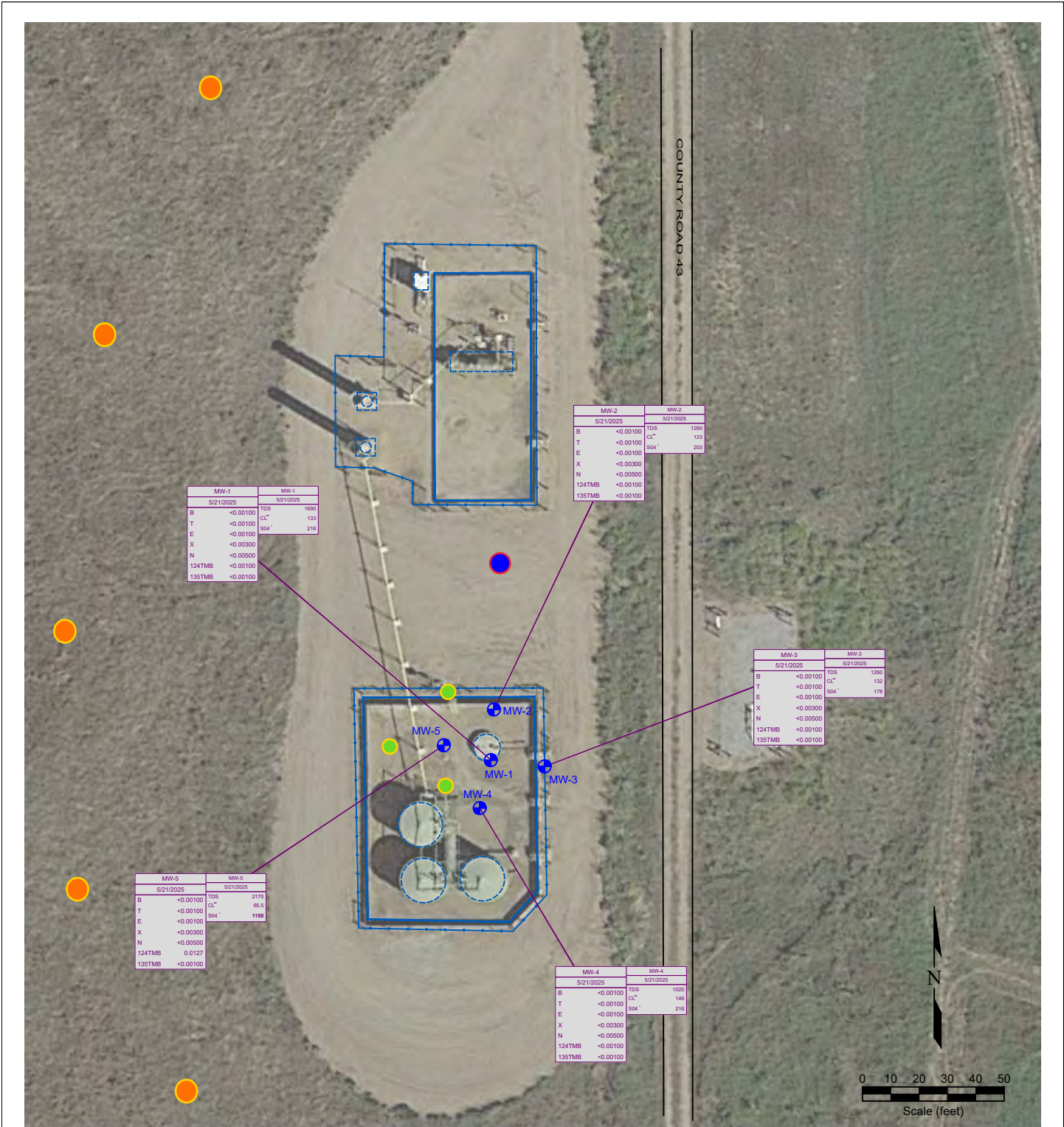
LEGEND

- WELL HEAD LOCATION
- ABOVE GROUND STORAGE TANK
- FORMER FACILITY
- FENCE LINE
- ⊕ MONITORING WELL LOCATION
- CONTAINMENT BERM
- CONTAINMENT WALL
- (87.20) NM
GROUND WATER ELEVATION (ft above arbitrary datum)
NOT MEASURED
- WATER TABLE CONTOUR
- GROUND WATER FLOW DIRECTION

Figure 4
INFERRED GROUNDWATER CONTOUR MAP
 May 21, 2025

Noble Energy, Inc. ~ Rei 25-10
 SWSW Sec. 10, T3N, R65W, 6th PM
 Weld County, Colorado
 40.231578°, -104.658323°

Project No. CO24-137	API #	Facility # 336608	
Date 8/19/25	Remediation # 34864	Filename 24137Q	



LEGEND

- WELL HEAD LOCATION
 - ABOVE GROUND STORAGE TANK
 - FORMER FACILITY
 - FENCE LINE
 - MONITORING WELL LOCATION
 - ▤ CONTAINMENT BERM
 - Proposed Background Monitoring Well
 - ▬ CONTAINMENT WALL
 - Proposed Impacted Soil Delineation Boring
 - Proposed Background Soil Samples
- | 07032024 | DATE SAMPLED | 110609 | DATE SAMPLED |
|----------|--------------|--------|--------------|
| GWS | SAMPLE ID | SI | SAMPLE ID |
| B | 44 | 100 | 31 |
| T | 100 | 100 | 31 |
| E | 7.9 | 100 | 31 |
| X | 100 | 100 | 31 |
| N | <1.0 | 100 | 31 |
| 124TMB | 108.0 | 100 | 31 |
| 135TMB | <1.0 | 100 | 31 |
- | 110609 | DATE SAMPLED | 110609 | DATE SAMPLED |
|--------|--------------|--------|--------------|
| SI | SAMPLE ID | SI | SAMPLE ID |
| 100 | 31 | 100 | 31 |
| 100 | 31 | 100 | 31 |
| 100 | 31 | 100 | 31 |
| 100 | 31 | 100 | 31 |
| 100 | 31 | 100 | 31 |
| 100 | 31 | 100 | 31 |
| 100 | 31 | 100 | 31 |
| 100 | 31 | 100 | 31 |
| 100 | 31 | 100 | 31 |

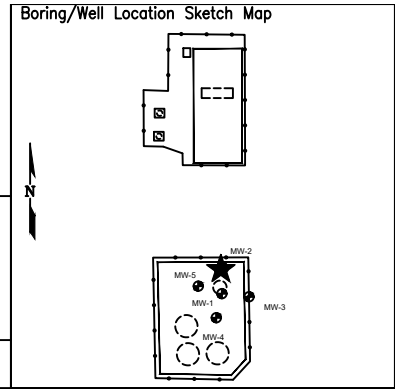
Figure 5
GROUNDWATER CHEMISTRY MAP
May 21, 2025

Noble Energy, Inc. ~ Rei 25-10
SWSW Sec. 10, T3N, R65W, 6th PM
Weld County, Colorado
40.231578°, -104.658323°

Project No. CO24-137	API #	Facility # 336608	
Date 8/19/25	Remediation # 34864	Filename 24137Q	

BORING LOGS

BORING/WELL CONSTRUCTION LOG



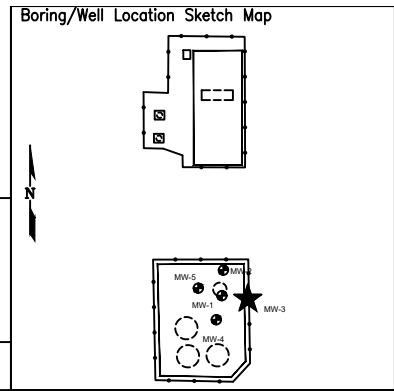
Page 1 of 1

Boring/Well No. MW-2		Total Depth 20'	Location Noble Energy, Inc. Rei 25-10 SWSW Sec. 10, T3N, R65W, 6th PM Weld County, Colorado			
Project No./Name C024-137 / Noble Rei 25-10			Approved By			
Drilling Contractor/Driller DrillPro / Bennett, Glen, Joe, Zack			Geologist/Office Ethan Black / Fremont Environmental, Inc.			
Drilling Equipment/Method Geoprobe		Size/Type of Bit 2.5" direct push	Sampling Method direct push	Start/Finish Date 05/21/2025		
Well Installed? Yes <input checked="" type="checkbox"/> No <input type="checkbox"/>		Casing Mtrl./Dia. PVC/1"	Screen: Type Slotted Mtrl. PVC Length 10' Dia. 1" Slot Size 0.010"			
Elevation of: (ft. above datum)		Ground Surface 3.46	Top of Well Casing 100.06	Top of Screen .	Bottom of Screen .	Ground Water Surface/Date Measured .

DEPTH (feet)	WELL CONSTRUCTION	LITHOLOGY		Penetration Rate (blows/6")	Recovery (%)	Sample Interval (feet)	PID Values (ppm)
		GRAPHIC LOG	VISUAL DESCRIPTION				
0	Bentonite	NR	No Recovery 0' to 3'				NS
1	1" Blank	NR					NS
5		SP	Sand: brown, fine, moist		50%		0.0
10		CL	Clay: brown, non-plastic, slightly moist		100%		0.0
15	#10-20 Silica Sand	SP	Sand: brown, fine, moist		100%		
20	1" Screen	SP	- wet - increasing coarse sand				
20			TD 20'				



BORING/WELL CONSTRUCTION LOG



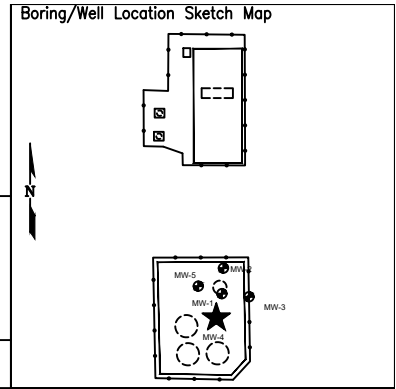
Page 1 of 1

Boring/Well No. MW-3		Total Depth 20'	Location Noble Energy, Inc. Rei 25-10 SWSW Sec. 10, T3N, R65W, 6th PM Weld County, Colorado			
Project No./Name C024-137 / Noble Rei 25-10			Approved By			
Drilling Contractor/Driller DrillPro / Bennett, Glen, Joe, Zack			Geologist/Office Ethan Black / Fremont Environmental, Inc.			
Drilling Equipment/Method Geoprobe		Size/Type of Bit 2.5" direct push	Sampling Method direct push	Start/Finish Date 05/21/2025		
Well Installed? Yes <input checked="" type="checkbox"/> No <input type="checkbox"/>		Casing Mtrl./Dia. PVC/1"	Screen: Type Slotted Mtrl. PVC Length 10' Dia. 1" Slot Size 0.010"			
Elevation of: (ft. above datum)	Ground Surface 3.85	Top of Well Casing 99.67	Top of Screen .	Bottom of Screen .	Ground Water Surface/Date Measured 12.92 05/21/2025	

DEPTH (feet)	WELL CONSTRUCTION		LITHOLOGY		Penetration Rate (blows/6")	Recovery (%)	Sample Interval (feet)	PID Values (ppm)
			GRAPHIC LOG	VISUAL DESCRIPTION				
	Bentonite	1" Blank	NR	No Recovery 0' to 3'				NS
5			SP	Sand: brown, fine, moist		50%	0.0	0.0
10			CL	Clay: light tan to brown, non-plastic, dry		100%	0.0	0.0
15	#10-20 Silica Sand	1" Screen	SP	Sand: brown, fine, moist		100%	0.0	0.0
				- wet - increasing gravel		100%	0.0	0.0
20			CL	Clay: brown, non-plastic, dry		100%	0.0	0.0
				TD 20'				0.0



BORING/WELL CONSTRUCTION LOG



Page 1 of 1

Boring/Well No. MW-4		Total Depth 20'	Location Noble Energy, Inc. Rei 25-10 SWSW Sec. 10, T3N, R65W, 6th PM Weld County, Colorado			
Project No./Name C024-137 / Noble Rei 25-10			Approved By			
Drilling Contractor/Driller DrillPro / Bennett, Glen, Joe, Zack			Geologist/Office Ethan Black / Fremont Environmental, Inc.			
Drilling Equipment/Method Geoprobe		Size/Type of Bit 2.5" direct push	Sampling Method direct push	Start/Finish Date 05/21/2025		
Well Installed? Yes <input checked="" type="checkbox"/> No <input type="checkbox"/>		Casing Mtrl./Dia. PVC/1"	Screen: Type Slotted Mtrl. PVC Length 10' Dia. 1" Slot Size 0.010"			
Elevation of: (ft. above datum)		Ground Surface 3.52	Top of Well Casing 100.00	Top of Screen -	Bottom of Screen -	Ground Water Surface/Date Measured 13.27 05/21/2025

DEPTH (feet)	WELL CONSTRUCTION		LITHOLOGY		Penetration Rate (blows/6")	Recovery (%)	Sample Interval (feet)	PID Values (ppm)
			GRAPHIC LOG	VISUAL DESCRIPTION				
	Bentonite	1" Blank	NR	No Recovery 0' to 3'				NS
5			SP	Sand: brown, fine, moist		50%	0.0	0.0
10			CL	Clay: brown and beige, low plasticity, slightly moist		90%	0.0	0.0
15	#10-20 Silica Sand	1" Screen	SP	Sand: brown, fine, moist		100%	0.0	0.0
20			CL	- wet - increasing gravel Clay: brown, non-plastic, dry		100%	0.0	0.0
				TD 20'				0.0

