

FULCRUM ENERGY OPERATING



| Targets | | | | | | | | | |
|---|----------|----------|--------------|--------------|-------------------|--------------------|------------------|-------------------|--|
| Name | MD (ft) | TVD (ft) | Local N (ft) | Local E (ft) | Grid East (US ft) | Grid North (US ft) | Latitude | Longitude | |
| SEC.04-T07N-R80W | N/A | 6.50 | 420.54 | 538.80 | 275320.41 | 1468220.84 | 40°36'54.87817"N | 106°23'18.7694"W | |
| SEC.05-T07N-R80W | N/A | 6.50 | 410.54 | 538.80 | 275320.31 | 1468210.84 | 40°36'54.87837"N | 106°23'18.7694"W | |
| SEC.09-T07N-R80W | N/A | 6.50 | 399.60 | 538.00 | 275319.39 | 1468199.90 | 40°36'54.76827"N | 106°23'18.7798"W | |
| SEC.33-T08N-R80W | N/A | 6.50 | 430.54 | 538.80 | 275320.51 | 1468230.84 | 40°36'55.07407"N | 106°23'18.7694"W | |
| JANET 0780 9S-4H9 BHL Rev-2 (291FSL & 1307FWL,SEC.09) | N/A | 7684.00 | -10391.19 | 1995.18 | 2754668.10 | 1457395.30 | 40°35'8.14037"N | 106°22'59.89637"W | |
| JANET 0780 9S-4H9 BHL Rev-3 (100FSL & 1308FWL,SEC.09) | 20407.64 | 7684.00 | -10582.72 | 1994.80 | 2754665.80 | 1457203.79 | 40°35'8.24787"N | 106°22'59.90147"W | |
| JANET 0780 9S-4H9 WP4 | 18077.14 | 7856.30 | 8259.87 | 2000.67 | 2754694.90 | 1459526.40 | 40°35'20.20067"N | 106°22'59.82417"W | |
| JANET 0780 9S-4H9 WP3 | 16000.64 | 8279.90 | 6227.07 | 2005.66 | 2754720.40 | 1461559.00 | 40°35'49.28747"N | 106°22'59.75607"W | |
| JANET 0780 9S-4H9 WP2 | 13859.11 | 8617.90 | -4113.26 | 2011.04 | 2754747.00 | 1463872.60 | 40°36'10.17467"N | 106°22'59.68417"W | |
| JANET 0780 9S-4H9 WP1 | 11453.45 | 8718.40 | -1709.71 | 2017.10 | 2754777.20 | 1466075.90 | 40°36'33.92477"N | 106°22'59.60307"W | |
| JANET 0780 9S-4H9 LP Rev-2 (353FNL & 1140FWL,SEC.04) | N/A | 8736.00 | 21.86 | 2021.41 | 2754798.90 | 1467807.30 | 40°36'51.03497"N | 106°22'59.54527"W | |
| JANET 0780 9S-4H9 LP Rev-3 (100FNL & 1128FWL,SEC.04) | 9468.42 | 8736.00 | 275.24 | 2016.13 | 2754796.16 | 1468060.71 | 40°36'53.53867"N | 106°22'59.61357"W | |
| JANET 0780 9S Hardlines (300FNL & 100FSL) | N/A | 9000.00 | 399.60 | 538.00 | 275320.39 | 1468199.90 | 40°36'54.76827"N | 106°23'18.77987"W | |

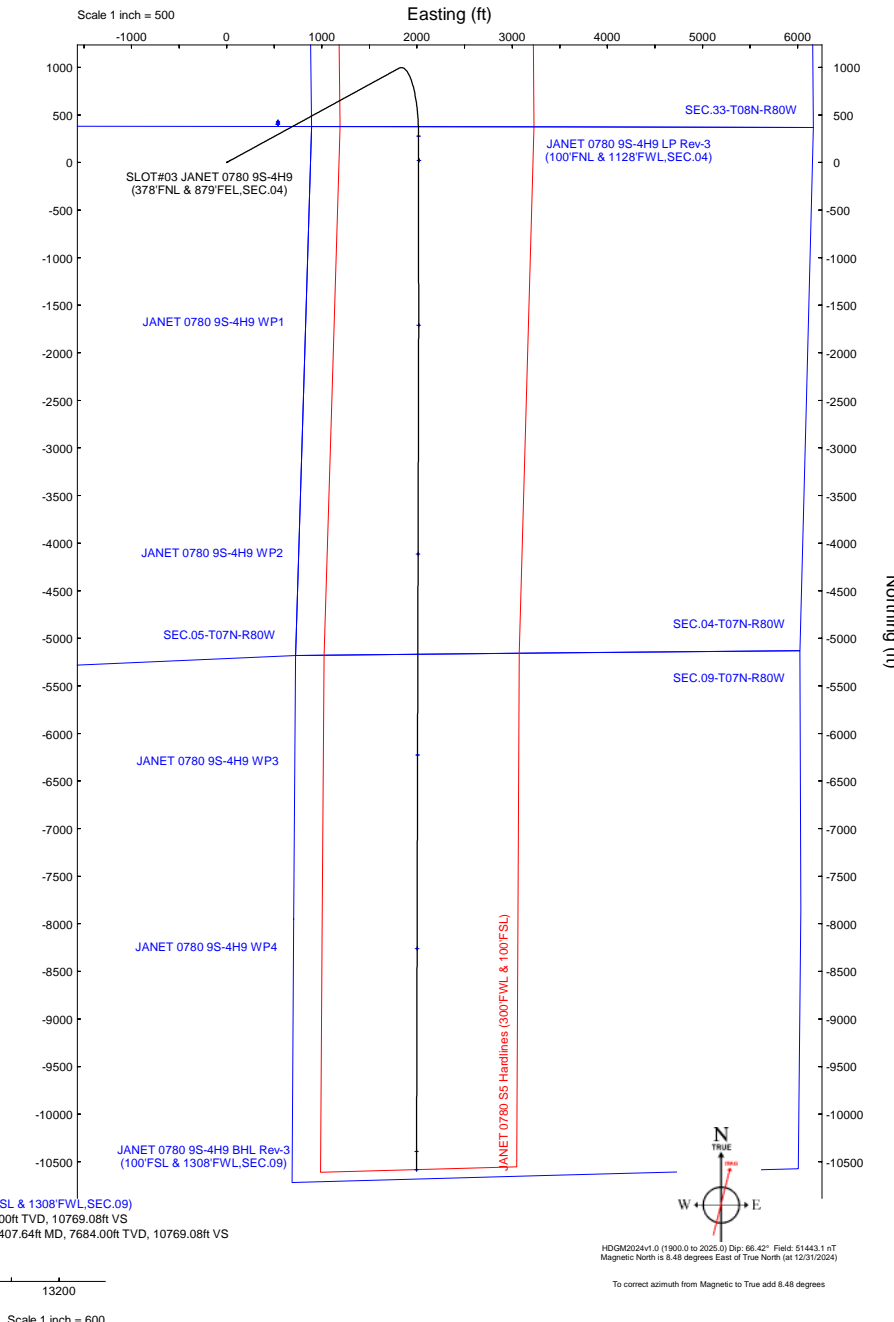
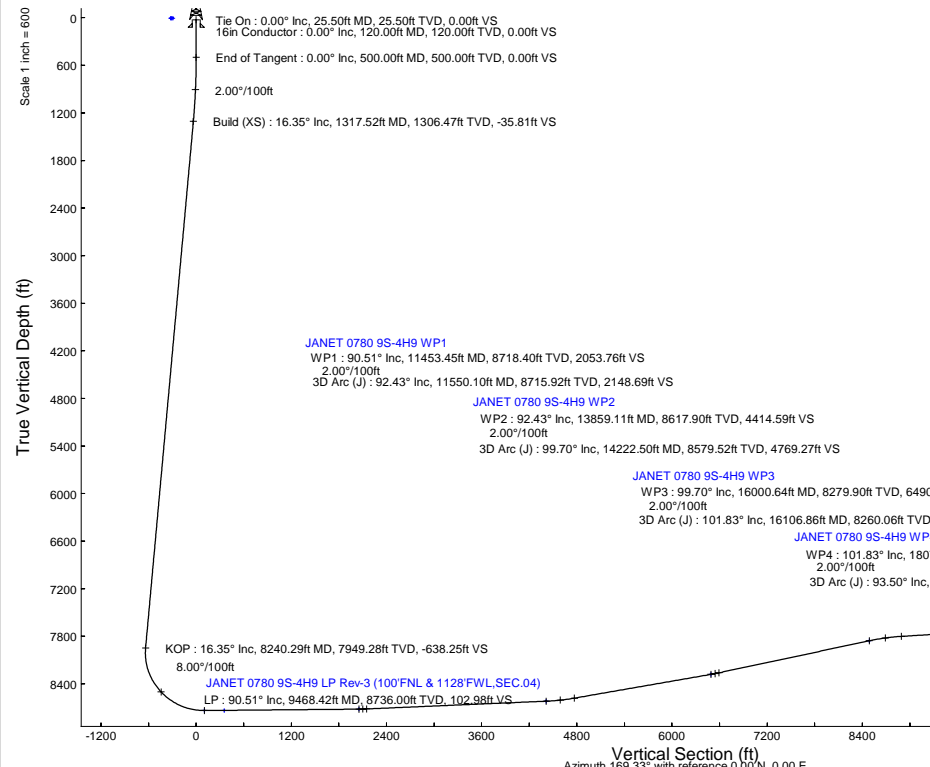
Location: COLORADO Slot: SLOT#03 JANET 0780 9S-4H9 (378'FNL & 879'FEL,SEC.04)
 Field: JACKSON COUNTY (NAD83/TN) Well: JANET 0780 9S-4H9
 Facility: SEC.04-T07N-R80W Wellbore: JANET 0780 9S-4H9 PWB

Plot reference wellpath is JANET 0780 9S-4H9 (REV-C.0) PWP
 Grid System: NAD83 / Lambert Colorado Sp. Northern Zone (501), US feet
 True vertical depths are referenced to (8099'GL+25.5'KB = 8124.5'RK) (RKB)
 North Reference: True north
 Reference wellpath measured depths are referenced to (8099'GL+25.5'KB = 8124.5'RK) (RKB)
 Scale: True distance
 (8099'GL+25.5'KB = 8124.5'RK) (RKB) to Mean Sea Level: 8124.5 feet
 Coordinates are in feet referenced to Slot
 Mean Sea Level to Ground level (At Slot: SLOT#03 JANET 0780 9S-4H9 (378'FNL & 879'FEL,SEC.04)): 0 feet
 Depths are in feet
 Offset wellpath MDs are referenced to each path's default MD datum
 Created by: martian01 on 2025-05-08; Database: WA_Devier

| Location Information | | | | | | | | | |
|---|-------------------|--------------------|-------------------|--------------------|------------------|-------------------|----------|--|--|
| Facility Name | Grid East (US ft) | Grid North (US ft) | Latitude | Longitude | | | | | |
| SEC.04-T07N-R80W | 2752737.421 | 1467805.737 | 40°36'50.81577"N | 106°23'26.27467"W | | | | | |
| Slot | Local N (ft) | Local E (ft) | Grid East (US ft) | Grid North (US ft) | Latitude | Longitude | | | |
| SLOT#03 JANET 0780 9S-4H9 (378'FNL & 879'FEL,SEC.04) | 40.00 | | 2752777.420 | 1467805.740 | 40°36'50.81977"N | 106°23'25.75607"W | | | |
| (8099'GL+25.5'KB = 8124.5'RK) (RKB) to Ground level (At Slot: SLOT#03 JANET 0780 9S-4H9 (378'FNL & 879'FEL,SEC.04)) | | | | | | | 8124.0ft | | |
| Mean Sea Level to Ground level (At Slot: SLOT#03 JANET 0780 9S-4H9 (378'FNL & 879'FEL,SEC.04)) | | | | | | | 0ft | | |
| (8099'GL+25.5'KB = 8124.5'RK) (RKB) to Mean Sea Level | | | | | | | 8124.0ft | | |

| Well Profile Data | | | | | | | | |
|-------------------|----------|---------|---------|----------|--------------|--------------|---------------|----------|
| Design Comment | MD (ft) | Inc (°) | Az (°) | TVD (ft) | Local N (ft) | Local E (ft) | DLS (°/100ft) | VS (ft) |
| Tie On | 25.50 | 0.000 | 61.318 | 25.50 | 0.00 | 0.00 | 0.00 | 0.00 |
| End of Tangent | 500.00 | 0.000 | 61.318 | 500.00 | 0.00 | 0.00 | 0.00 | 0.00 |
| Build (XS) | 1317.52 | 16.350 | 61.318 | 1306.47 | 55.60 | 101.64 | 2.00 | -35.81 |
| KOP | 8240.29 | 16.350 | 61.318 | 7949.28 | 990.93 | 1811.35 | 0.00 | -638.25 |
| LP | 9468.42 | 90.508 | 179.972 | 8736.00 | 275.24 | 2016.13 | 8.00 | 102.98 |
| WP1 | 11453.45 | 90.508 | 179.972 | 8718.40 | -1709.71 | 2017.10 | 0.00 | 2053.76 |
| 3D Arc (J) | 11550.10 | 92.433 | 180.148 | 8715.92 | -1806.33 | 2017.00 | 2.00 | 2148.69 |
| WP2 | 13859.11 | 92.433 | 180.148 | 8617.90 | -4113.26 | 2011.04 | 0.00 | 4414.59 |
| 3D Arc (J) | 14222.50 | 99.701 | 180.145 | 8579.52 | -4474.37 | 2010.11 | 2.00 | 4769.27 |
| WP3 | 16000.64 | 99.701 | 180.145 | 8279.90 | -6227.07 | 2005.66 | 0.00 | 6490.82 |
| 3D Arc (J) | 16106.86 | 101.825 | 180.143 | 8260.06 | -6331.42 | 2005.40 | 2.00 | 6593.32 |
| WP4 | 18077.14 | 101.825 | 180.143 | 7856.30 | -8259.87 | 2000.57 | 0.00 | 8487.51 |
| 3D Arc (J) | 18493.43 | 93.499 | 180.142 | 7800.84 | -8672.08 | 1999.55 | 2.00 | 8892.39 |
| BHL | 20407.64 | 93.499 | 180.142 | 7684.00 | -10582.72 | 1994.80 | 0.00 | 10769.08 |

| Survey Program | | | | | |
|----------------|-------------|----------------------------------|--|------------------|-----------------------|
| Start MD (ft) | End MD (ft) | Tool | Model | Log Name/Comment | Wellbore |
| 25.50 | 4965.31 | OWSG MWD rev2 | OWSG MWD rev2 - Standard | | JANET 0780 9S-4H9 PWB |
| 4965.31 | 20407.64 | BH AutoTrak Curve/Express (2019) | BH AutoTrak Curve/Express (2019) (HRGM, Short spacing) | | JANET 0780 9S-4H9 PWB |





Planned Wellpath Report

JANET 0780 9S-4H9 (REV-C.0) PWP

Page 1 of 10



REFERENCE WELLPATH IDENTIFICATION

| | | | |
|----------|--|----------|-----------------------|
| Operator | FULCRUM ENERGY OPERATING | Well | JANET 0780 9S-4H9 |
| Field | JACKSON COUNTY (NAD83/TN) | API | 05-057-06643 |
| Facility | SEC.04-T07N-R80W | Wellbore | JANET 0780 9S-4H9 PWB |
| Slot | SLOT#03 JANET 0780 9S-4H9 (378'FNL & 879'FEL,SEC.04) | | |

REPORT SETUP INFORMATION

| | | | |
|---------------------|---|------------------|-------------------------|
| Projection System | NAD83 / Lambert Colorado SP, Northern Zone (501), US feet | Software System | WellArchitect® 6.0 |
| North Reference | True | User | Martsam01 |
| Scale | 0.999977 | Report Generated | 5/7/2025 at 10:39:55 PM |
| Convergence at slot | 0.58° West | Database | WA_Denver |

WELLPATH LOCATION

| | Local coordinates | | Grid coordinates | | Geographic coordinates | |
|-----------------------|-------------------|----------|------------------|-----------------|------------------------|---------------|
| | North[ft] | East[ft] | Easting[US ft] | Northing[US ft] | Latitude | Longitude |
| Slot Location | 0.40 | 40.00 | 2752777.42 | 1467805.74 | 40.6141166° | -106.3904878° |
| Facility Reference Pt | | | 2752737.42 | 1467805.74 | 40.6141155° | -106.3906318° |
| Field Reference Pt | | | 2986049.83 | 1344849.24 | 40.2800000° | -105.5500000° |

WELLPATH DATUM

| | | | |
|--------------------------|--------------------------------------|---|-------------------|
| Calculation method | Minimum curvature | (8099'GL+25.5'KB = 8124.5'RKB) (RKB) to Facility Vertical Datum | 8124.50ft |
| Horizontal Reference Pt | Slot | (8099'GL+25.5'KB = 8124.5'RKB) (RKB) to Mean Sea Level | 8124.50ft |
| Vertical Reference Pt | (8099'GL+25.5'KB = 8124.5'RKB) (RKB) | (8099'GL+25.5'KB = 8124.5'RKB) (RKB) to Ground Level at Slot (SLOT#03 JANET 0780 9S-4H9 (378'FNL & 879'FEL,SEC.04)) | 8124.50ft |
| MD Reference Pt | (8099'GL+25.5'KB = 8124.5'RKB) (RKB) | Section Origin | N 0.00, E 0.00 ft |
| Field Vertical Reference | Mean Sea Level | Section Azimuth | 169.33° |



Planned Wellpath Report

JANET 0780 9S-4H9 (REV-C.0) PWP

Page 2 of 10



| REFERENCE WELLPATH IDENTIFICATION | | | |
|-----------------------------------|--|----------|-----------------------|
| Operator | FULCRUM ENERGY OPERATING | Well | JANET 0780 9S-4H9 |
| Field | JACKSON COUNTY (NAD83/TN) | API | 05-057-06643 |
| Facility | SEC.04-T07N-R80W | Wellbore | JANET 0780 9S-4H9 PWB |
| Slot | SLOT#03 JANET 0780 9S-4H9 (378'FNL & 879'FEL,SEC.04) | | |

WELLPATH DATA (218 stations) † = interpolated, ‡ = extrapolated station

| MD [ft] | Inclination [°] | Azimuth [°] | TVD [ft] | Vert Sect [ft] | North [ft] | East [ft] | Grid East [US ft] | Grid North [US ft] | Latitude | Longitude | DLS [°/100ft] | Comments |
|----------|-----------------|-------------|----------|----------------|------------|-----------|-------------------|--------------------|------------|--------------|---------------|----------------|
| 0.00† | 0.000 | 61.318 | 0.00 | 0.00 | 0.00 | 0.00 | 2752777.42 | 1467805.74 | 40.6141166 | -106.3904878 | 0.00 | |
| 25.50 | 0.000 | 61.318 | 25.50 | 0.00 | 0.00 | 0.00 | 2752777.42 | 1467805.74 | 40.6141166 | -106.3904878 | 0.00 | Tie On |
| 100.00† | 0.000 | 61.318 | 100.00 | 0.00 | 0.00 | 0.00 | 2752777.42 | 1467805.74 | 40.6141166 | -106.3904878 | 0.00 | |
| 200.00† | 0.000 | 61.318 | 200.00 | 0.00 | 0.00 | 0.00 | 2752777.42 | 1467805.74 | 40.6141166 | -106.3904878 | 0.00 | |
| 300.00† | 0.000 | 61.318 | 300.00 | 0.00 | 0.00 | 0.00 | 2752777.42 | 1467805.74 | 40.6141166 | -106.3904878 | 0.00 | |
| 400.00† | 0.000 | 61.318 | 400.00 | 0.00 | 0.00 | 0.00 | 2752777.42 | 1467805.74 | 40.6141166 | -106.3904878 | 0.00 | |
| 500.00 | 0.000 | 61.318 | 500.00 | 0.00 | 0.00 | 0.00 | 2752777.42 | 1467805.74 | 40.6141166 | -106.3904878 | 0.00 | End of Tangent |
| 600.00† | 2.000 | 61.318 | 599.98 | -0.54 | 0.84 | 1.53 | 2752778.96 | 1467806.56 | 40.6141189 | -106.3904823 | 2.00 | |
| 700.00† | 4.000 | 61.318 | 699.84 | -2.16 | 3.35 | 6.12 | 2752783.58 | 1467809.03 | 40.6141258 | -106.3904657 | 2.00 | |
| 800.00† | 6.000 | 61.318 | 799.45 | -4.85 | 7.53 | 13.77 | 2752791.26 | 1467813.13 | 40.6141373 | -106.3904382 | 2.00 | |
| 900.00† | 8.000 | 61.318 | 898.70 | -8.62 | 13.38 | 24.46 | 2752802.01 | 1467818.87 | 40.6141533 | -106.3903997 | 2.00 | |
| 1000.00† | 10.000 | 61.318 | 997.47 | -13.45 | 20.89 | 38.18 | 2752815.81 | 1467826.24 | 40.6141739 | -106.3903502 | 2.00 | |
| 1100.00† | 12.000 | 61.318 | 1095.62 | -19.35 | 30.05 | 54.92 | 2752832.64 | 1467835.23 | 40.6141991 | -106.3902900 | 2.00 | |
| 1200.00† | 14.000 | 61.318 | 1193.06 | -26.31 | 40.84 | 74.66 | 2752852.48 | 1467845.83 | 40.6142287 | -106.3902189 | 2.00 | |
| 1300.00† | 16.000 | 61.318 | 1289.64 | -34.31 | 53.26 | 97.36 | 2752875.31 | 1467858.02 | 40.6142628 | -106.3901371 | 2.00 | |
| 1317.52 | 16.350 | 61.318 | 1306.47 | -35.81 | 55.60 | 101.64 | 2752879.61 | 1467860.32 | 40.6142692 | -106.3901217 | 2.00 | Build (XS) |
| 1400.00† | 16.350 | 61.318 | 1385.61 | -42.99 | 66.75 | 122.01 | 2752900.09 | 1467871.26 | 40.6142998 | -106.3900483 | 0.00 | |
| 1500.00† | 16.350 | 61.318 | 1481.57 | -51.69 | 80.26 | 146.71 | 2752924.92 | 1467884.52 | 40.6143369 | -106.3899593 | 0.00 | |
| 1600.00† | 16.350 | 61.318 | 1577.53 | -60.40 | 93.77 | 171.41 | 2752949.75 | 1467897.78 | 40.6143740 | -106.3898704 | 0.00 | |
| 1700.00† | 16.350 | 61.318 | 1673.48 | -69.10 | 107.28 | 196.10 | 2752974.59 | 1467911.04 | 40.6144110 | -106.3897814 | 0.00 | |
| 1800.00† | 16.350 | 61.318 | 1769.44 | -77.80 | 120.79 | 220.80 | 2752999.42 | 1467924.31 | 40.6144481 | -106.3896925 | 0.00 | |
| 1900.00† | 16.350 | 61.318 | 1865.39 | -86.50 | 134.30 | 245.50 | 2753024.25 | 1467937.57 | 40.6144852 | -106.3896035 | 0.00 | |
| 2000.00† | 16.350 | 61.318 | 1961.35 | -95.21 | 147.81 | 270.19 | 2753049.08 | 1467950.83 | 40.6145223 | -106.3895146 | 0.00 | |
| 2100.00† | 16.350 | 61.318 | 2057.30 | -103.91 | 161.32 | 294.89 | 2753073.91 | 1467964.09 | 40.6145594 | -106.3894256 | 0.00 | |
| 2200.00† | 16.350 | 61.318 | 2153.26 | -112.61 | 174.83 | 319.59 | 2753098.74 | 1467977.35 | 40.6145965 | -106.3893367 | 0.00 | |
| 2300.00† | 16.350 | 61.318 | 2249.22 | -121.31 | 188.35 | 344.28 | 2753123.57 | 1467990.61 | 40.6146335 | -106.3892477 | 0.00 | |
| 2400.00† | 16.350 | 61.318 | 2345.17 | -130.02 | 201.86 | 368.98 | 2753148.40 | 1468003.88 | 40.6146706 | -106.3891588 | 0.00 | |
| 2500.00† | 16.350 | 61.318 | 2441.13 | -138.72 | 215.37 | 393.68 | 2753173.23 | 1468017.14 | 40.6147077 | -106.3890698 | 0.00 | |
| 2600.00† | 16.350 | 61.318 | 2537.08 | -147.42 | 228.88 | 418.37 | 2753198.06 | 1468030.40 | 40.6147448 | -106.3889808 | 0.00 | |
| 2700.00† | 16.350 | 61.318 | 2633.04 | -156.12 | 242.39 | 443.07 | 2753222.89 | 1468043.66 | 40.6147819 | -106.3888919 | 0.00 | |
| 2800.00† | 16.350 | 61.318 | 2729.00 | -164.82 | 255.90 | 467.77 | 2753247.72 | 1468056.92 | 40.6148190 | -106.3888029 | 0.00 | |
| 2900.00† | 16.350 | 61.318 | 2824.95 | -173.53 | 269.41 | 492.46 | 2753272.55 | 1468070.18 | 40.6148560 | -106.3887140 | 0.00 | |
| 3000.00† | 16.350 | 61.318 | 2920.91 | -182.23 | 282.92 | 517.16 | 2753297.38 | 1468083.45 | 40.6148931 | -106.3886250 | 0.00 | |
| 3100.00† | 16.350 | 61.318 | 3016.86 | -190.93 | 296.43 | 541.86 | 2753322.21 | 1468096.71 | 40.6149302 | -106.3885361 | 0.00 | |
| 3200.00† | 16.350 | 61.318 | 3112.82 | -199.63 | 309.94 | 566.56 | 2753347.05 | 1468109.97 | 40.6149673 | -106.3884471 | 0.00 | |
| 3300.00† | 16.350 | 61.318 | 3208.77 | -208.34 | 323.45 | 591.25 | 2753371.88 | 1468123.23 | 40.6150044 | -106.3883582 | 0.00 | |
| 3400.00† | 16.350 | 61.318 | 3304.73 | -217.04 | 336.96 | 615.95 | 2753396.71 | 1468136.49 | 40.6150415 | -106.3882692 | 0.00 | |
| 3500.00† | 16.350 | 61.318 | 3400.69 | -225.74 | 350.47 | 640.65 | 2753421.54 | 1468149.76 | 40.6150785 | -106.3881802 | 0.00 | |
| 3600.00† | 16.350 | 61.318 | 3496.64 | -234.44 | 363.99 | 665.34 | 2753446.37 | 1468163.02 | 40.6151156 | -106.3880913 | 0.00 | |
| 3700.00† | 16.350 | 61.318 | 3592.60 | -243.14 | 377.50 | 690.04 | 2753471.20 | 1468176.28 | 40.6151527 | -106.3880023 | 0.00 | |
| 3800.00† | 16.350 | 61.318 | 3688.55 | -251.85 | 391.01 | 714.74 | 2753496.03 | 1468189.54 | 40.6151898 | -106.3879134 | 0.00 | |
| 3900.00† | 16.350 | 61.318 | 3784.51 | -260.55 | 404.52 | 739.43 | 2753520.86 | 1468202.80 | 40.6152269 | -106.3878244 | 0.00 | |
| 4000.00† | 16.350 | 61.318 | 3880.47 | -269.25 | 418.03 | 764.13 | 2753545.69 | 1468216.06 | 40.6152640 | -106.3877355 | 0.00 | |
| 4100.00† | 16.350 | 61.318 | 3976.42 | -277.95 | 431.54 | 788.83 | 2753570.52 | 1468229.33 | 40.6153010 | -106.3876465 | 0.00 | |
| 4200.00† | 16.350 | 61.318 | 4072.38 | -286.66 | 445.05 | 813.52 | 2753595.35 | 1468242.59 | 40.6153381 | -106.3875575 | 0.00 | |



Planned Wellpath Report

JANET 0780 9S-4H9 (REV-C.0) PWP

Page 3 of 10



REFERENCE WELLPATH IDENTIFICATION

| | | | |
|----------|--|----------|-----------------------|
| Operator | FULCRUM ENERGY OPERATING | Well | JANET 0780 9S-4H9 |
| Field | JACKSON COUNTY (NAD83/TN) | API | 05-057-06643 |
| Facility | SEC.04-T07N-R80W | Wellbore | JANET 0780 9S-4H9 PWB |
| Slot | SLOT#03 JANET 0780 9S-4H9 (378'FNL & 879'FEL,SEC.04) | | |

WELLPATH DATA (218 stations) † = interpolated, ‡ = extrapolated station

| MD [ft] | Inclination [°] | Azimuth [°] | TVD [ft] | Vert Sect [ft] | North [ft] | East [ft] | Grid East [US ft] | Grid North [US ft] | Latitude | Longitude | DLS ["/100ft] | Comments |
|----------|-----------------|-------------|----------|----------------|------------|-----------|-------------------|--------------------|------------|--------------|---------------|----------|
| 4300.00† | 16.350 | 61.318 | 4168.33 | -295.36 | 458.56 | 838.22 | 2753620.18 | 1468255.85 | 40.6153752 | -106.3874686 | 0.00 | |
| 4400.00† | 16.350 | 61.318 | 4264.29 | -304.06 | 472.07 | 862.92 | 2753645.01 | 1468269.11 | 40.6154123 | -106.3873796 | 0.00 | |
| 4500.00† | 16.350 | 61.318 | 4360.24 | -312.76 | 485.58 | 887.61 | 2753669.84 | 1468282.37 | 40.6154494 | -106.3872907 | 0.00 | |
| 4600.00† | 16.350 | 61.318 | 4456.20 | -321.47 | 499.09 | 912.31 | 2753694.67 | 1468295.63 | 40.6154864 | -106.3872017 | 0.00 | |
| 4700.00† | 16.350 | 61.318 | 4552.16 | -330.17 | 512.60 | 937.01 | 2753719.50 | 1468308.90 | 40.6155235 | -106.3871128 | 0.00 | |
| 4800.00† | 16.350 | 61.318 | 4648.11 | -338.87 | 526.11 | 961.71 | 2753744.34 | 1468322.16 | 40.6155606 | -106.3870238 | 0.00 | |
| 4900.00† | 16.350 | 61.318 | 4744.07 | -347.57 | 539.63 | 986.40 | 2753769.17 | 1468335.42 | 40.6155977 | -106.3869348 | 0.00 | |
| 5000.00† | 16.350 | 61.318 | 4840.02 | -356.27 | 553.14 | 1011.10 | 2753794.00 | 1468348.68 | 40.6156348 | -106.3868459 | 0.00 | |
| 5100.00† | 16.350 | 61.318 | 4935.98 | -364.98 | 566.65 | 1035.80 | 2753818.83 | 1468361.94 | 40.6156719 | -106.3867569 | 0.00 | |
| 5200.00† | 16.350 | 61.318 | 5031.94 | -373.68 | 580.16 | 1060.49 | 2753843.66 | 1468375.21 | 40.6157089 | -106.3866680 | 0.00 | |
| 5300.00† | 16.350 | 61.318 | 5127.89 | -382.38 | 593.67 | 1085.19 | 2753868.49 | 1468388.47 | 40.6157460 | -106.3865790 | 0.00 | |
| 5400.00† | 16.350 | 61.318 | 5223.85 | -391.08 | 607.18 | 1109.89 | 2753893.32 | 1468401.73 | 40.6157831 | -106.3864901 | 0.00 | |
| 5500.00† | 16.350 | 61.318 | 5319.80 | -399.79 | 620.69 | 1134.58 | 2753918.15 | 1468414.99 | 40.6158202 | -106.3864011 | 0.00 | |
| 5600.00† | 16.350 | 61.318 | 5415.76 | -408.49 | 634.20 | 1159.28 | 2753942.98 | 1468428.25 | 40.6158573 | -106.3863121 | 0.00 | |
| 5700.00† | 16.350 | 61.318 | 5511.72 | -417.19 | 647.71 | 1183.98 | 2753967.81 | 1468441.51 | 40.6158943 | -106.3862232 | 0.00 | |
| 5800.00† | 16.350 | 61.318 | 5607.67 | -425.89 | 661.22 | 1208.67 | 2753992.64 | 1468454.78 | 40.6159314 | -106.3861342 | 0.00 | |
| 5900.00† | 16.350 | 61.318 | 5703.63 | -434.59 | 674.73 | 1233.37 | 2754017.47 | 1468468.04 | 40.6159685 | -106.3860453 | 0.00 | |
| 6000.00† | 16.350 | 61.318 | 5799.58 | -443.30 | 688.24 | 1258.07 | 2754042.30 | 1468481.30 | 40.6160056 | -106.3859563 | 0.00 | |
| 6100.00† | 16.350 | 61.318 | 5895.54 | -452.00 | 701.75 | 1282.76 | 2754067.13 | 1468494.56 | 40.6160427 | -106.3858674 | 0.00 | |
| 6200.00† | 16.350 | 61.318 | 5991.49 | -460.70 | 715.27 | 1307.46 | 2754091.96 | 1468507.82 | 40.6160797 | -106.3857784 | 0.00 | |
| 6300.00† | 16.350 | 61.318 | 6087.45 | -469.40 | 728.78 | 1332.16 | 2754116.80 | 1468521.08 | 40.6161168 | -106.3856894 | 0.00 | |
| 6400.00† | 16.350 | 61.318 | 6183.41 | -478.11 | 742.29 | 1356.85 | 2754141.63 | 1468534.35 | 40.6161539 | -106.3856005 | 0.00 | |
| 6500.00† | 16.350 | 61.318 | 6279.36 | -486.81 | 755.80 | 1381.55 | 2754166.46 | 1468547.61 | 40.6161910 | -106.3855115 | 0.00 | |
| 6600.00† | 16.350 | 61.318 | 6375.32 | -495.51 | 769.31 | 1406.25 | 2754191.29 | 1468560.87 | 40.6162281 | -106.3854226 | 0.00 | |
| 6700.00† | 16.350 | 61.318 | 6471.27 | -504.21 | 782.82 | 1430.95 | 2754216.12 | 1468574.13 | 40.6162651 | -106.3853336 | 0.00 | |
| 6800.00† | 16.350 | 61.318 | 6567.23 | -512.92 | 796.33 | 1455.64 | 2754240.95 | 1468587.39 | 40.6163022 | -106.3852446 | 0.00 | |
| 6900.00† | 16.350 | 61.318 | 6663.19 | -521.62 | 809.84 | 1480.34 | 2754265.78 | 1468600.65 | 40.6163393 | -106.3851557 | 0.00 | |
| 7000.00† | 16.350 | 61.318 | 6759.14 | -530.32 | 823.35 | 1505.04 | 2754290.61 | 1468613.92 | 40.6163764 | -106.3850667 | 0.00 | |
| 7100.00† | 16.350 | 61.318 | 6855.10 | -539.02 | 836.86 | 1529.73 | 2754315.44 | 1468627.18 | 40.6164135 | -106.3849778 | 0.00 | |
| 7200.00† | 16.350 | 61.318 | 6951.05 | -547.72 | 850.37 | 1554.43 | 2754340.27 | 1468640.44 | 40.6164505 | -106.3848888 | 0.00 | |
| 7300.00† | 16.350 | 61.318 | 7047.01 | -556.43 | 863.88 | 1579.13 | 2754365.10 | 1468653.70 | 40.6164876 | -106.3847998 | 0.00 | |
| 7400.00† | 16.350 | 61.318 | 7142.96 | -565.13 | 877.40 | 1603.82 | 2754389.93 | 1468666.96 | 40.6165247 | -106.3847109 | 0.00 | |
| 7500.00† | 16.350 | 61.318 | 7238.92 | -573.83 | 890.91 | 1628.52 | 2754414.76 | 1468680.23 | 40.6165618 | -106.3846219 | 0.00 | |
| 7600.00† | 16.350 | 61.318 | 7334.88 | -582.53 | 904.42 | 1653.22 | 2754439.59 | 1468693.49 | 40.6165989 | -106.3845330 | 0.00 | |
| 7700.00† | 16.350 | 61.318 | 7430.83 | -591.24 | 917.93 | 1677.91 | 2754464.42 | 1468706.75 | 40.6166359 | -106.3844440 | 0.00 | |
| 7800.00† | 16.350 | 61.318 | 7526.79 | -599.94 | 931.44 | 1702.61 | 2754489.26 | 1468720.01 | 40.6166730 | -106.3843550 | 0.00 | |
| 7900.00† | 16.350 | 61.318 | 7622.74 | -608.64 | 944.95 | 1727.31 | 2754514.09 | 1468733.27 | 40.6167101 | -106.3842661 | 0.00 | |
| 8000.00† | 16.350 | 61.318 | 7718.70 | -617.34 | 958.46 | 1752.00 | 2754538.92 | 1468746.53 | 40.6167472 | -106.3841771 | 0.00 | |
| 8100.00† | 16.350 | 61.318 | 7814.66 | -626.04 | 971.97 | 1776.70 | 2754563.75 | 1468759.80 | 40.6167843 | -106.3840882 | 0.00 | |
| 8200.00† | 16.350 | 61.318 | 7910.61 | -634.75 | 985.48 | 1801.40 | 2754588.58 | 1468773.06 | 40.6168213 | -106.3839992 | 0.00 | |
| 8240.29 | 16.350 | 61.318 | 7949.28 | -638.25 | 990.93 | 1811.35 | 2754598.58 | 1468778.40 | 40.6168363 | -106.3839634 | 0.00 | KOP |
| 8300.00† | 14.746 | 78.181 | 8006.82 | -641.00 | 996.52 | 1826.17 | 2754613.46 | 1468783.85 | 40.6168516 | -106.3839100 | 8.00 | |
| 8400.00† | 15.294 | 109.341 | 8103.56 | -634.65 | 994.75 | 1851.11 | 2754638.38 | 1468781.83 | 40.6168468 | -106.3838201 | 8.00 | |
| 8500.00† | 19.381 | 132.724 | 8199.12 | -614.70 | 979.10 | 1875.78 | 2754662.89 | 1468765.93 | 40.6168038 | -106.3837313 | 8.00 | |
| 8600.00† | 25.349 | 146.877 | 8291.62 | -581.54 | 949.87 | 1899.71 | 2754686.52 | 1468736.46 | 40.6167236 | -106.3836451 | 8.00 | |



Planned Wellpath Report

JANET 0780 9S-4H9 (REV-C.0) PWP

Page 4 of 10



REFERENCE WELLPATH IDENTIFICATION

| | | | |
|----------|--|----------|-----------------------|
| Operator | FULCRUM ENERGY OPERATING | Well | JANET 0780 9S-4H9 |
| Field | JACKSON COUNTY (NAD83/TN) | API | 05-057-06643 |
| Facility | SEC.04-T07N-R80W | Wellbore | JANET 0780 9S-4H9 PWB |
| Slot | SLOT#03 JANET 0780 9S-4H9 (378'FNL & 879'FEL,SEC.04) | | |

WELLPATH DATA (218 stations) † = interpolated, ‡ = extrapolated station

| MD [ft] | Inclination [°] | Azimuth [°] | TVD [ft] | Vert Sect [ft] | North [ft] | East [ft] | Grid East [US ft] | Grid North [US ft] | Latitude | Longitude | DLS [°/100ft] | Comments |
|-----------|-----------------|-------------|----------------------|----------------|------------|-----------|-------------------|--------------------|------------|--------------|---------------|------------|
| 8700.00† | 32.165 | 155.644 | 8379.27 | -535.82 | 907.63 | 1922.42 | 2754708.81 | 1468693.99 | 40.6166076 | -106.3835633 | 8.00 | |
| 8800.00† | 39.391 | 161.546 | 8460.37 | -478.43 | 853.19 | 1943.48 | 2754729.32 | 1468639.35 | 40.6164582 | -106.3834875 | 8.00 | |
| 8900.00† | 46.834 | 165.850 | 8533.34 | -410.48 | 787.62 | 1962.47 | 2754747.65 | 1468573.60 | 40.6162782 | -106.3834191 | 8.00 | |
| 9000.00† | 54.403 | 169.208 | 8596.75 | -333.29 | 712.20 | 1979.02 | 2754763.44 | 1468498.01 | 40.6160712 | -106.3833595 | 8.00 | |
| 9100.00† | 62.050 | 171.980 | 8649.37 | -248.38 | 628.39 | 1992.82 | 2754776.40 | 1468414.07 | 40.6158412 | -106.3833098 | 8.00 | |
| 9200.00† | 69.744 | 174.382 | 8690.19 | -157.38 | 537.82 | 2003.59 | 2754786.26 | 1468323.40 | 40.6155926 | -106.3832710 | 8.00 | |
| 9300.00† | 77.468 | 176.556 | 8718.39 | -62.08 | 442.27 | 2011.13 | 2754792.84 | 1468227.78 | 40.6153303 | -106.3832439 | 8.00 | |
| 9400.00† | 85.208 | 178.603 | 8733.44 | 35.67 | 343.57 | 2015.28 | 2754796.00 | 1468129.05 | 40.6150594 | -106.3832290 | 8.00 | |
| 9468.42 | 90.508 | 179.972 | 8736.00 ¹ | 102.98 | 275.24 | 2016.13 | 2754796.16 | 1468060.71 | 40.6148718 | -106.3832260 | 8.00 | LP |
| 9500.00† | 90.508 | 179.972 | 8735.72 | 134.02 | 243.65 | 2016.14 | 2754795.86 | 1468029.13 | 40.6147851 | -106.3832259 | 0.00 | |
| 9600.00† | 90.508 | 179.972 | 8734.83 | 232.29 | 143.66 | 2016.19 | 2754794.90 | 1467929.14 | 40.6145107 | -106.3832258 | 0.00 | |
| 9700.00† | 90.508 | 179.972 | 8733.95 | 330.57 | 43.66 | 2016.24 | 2754793.95 | 1467829.15 | 40.6142362 | -106.3832256 | 0.00 | |
| 9800.00† | 90.508 | 179.972 | 8733.06 | 428.84 | -56.33 | 2016.29 | 2754792.99 | 1467729.16 | 40.6139617 | -106.3832255 | 0.00 | |
| 9900.00† | 90.508 | 179.972 | 8732.17 | 527.12 | -156.33 | 2016.34 | 2754792.04 | 1467629.17 | 40.6136873 | -106.3832253 | 0.00 | |
| 10000.00† | 90.508 | 179.972 | 8731.29 | 625.39 | -256.33 | 2016.39 | 2754791.08 | 1467529.19 | 40.6134128 | -106.3832252 | 0.00 | |
| 10100.00† | 90.508 | 179.972 | 8730.40 | 723.67 | -356.32 | 2016.44 | 2754790.13 | 1467429.20 | 40.6131383 | -106.3832250 | 0.00 | |
| 10200.00† | 90.508 | 179.972 | 8729.51 | 821.94 | -456.32 | 2016.49 | 2754789.17 | 1467329.21 | 40.6128639 | -106.3832249 | 0.00 | |
| 10300.00† | 90.508 | 179.972 | 8728.63 | 920.22 | -556.31 | 2016.54 | 2754788.22 | 1467229.22 | 40.6125894 | -106.3832247 | 0.00 | |
| 10400.00† | 90.508 | 179.972 | 8727.74 | 1018.49 | -656.31 | 2016.58 | 2754787.26 | 1467129.23 | 40.6123149 | -106.3832246 | 0.00 | |
| 10500.00† | 90.508 | 179.972 | 8726.85 | 1116.77 | -756.31 | 2016.63 | 2754786.31 | 1467029.24 | 40.6120404 | -106.3832244 | 0.00 | |
| 10600.00† | 90.508 | 179.972 | 8725.97 | 1215.04 | -856.30 | 2016.68 | 2754785.35 | 1466929.25 | 40.6117660 | -106.3832243 | 0.00 | |
| 10700.00† | 90.508 | 179.972 | 8725.08 | 1313.32 | -956.30 | 2016.73 | 2754784.40 | 1466829.26 | 40.6114915 | -106.3832242 | 0.00 | |
| 10800.00† | 90.508 | 179.972 | 8724.19 | 1411.59 | -1056.29 | 2016.78 | 2754783.44 | 1466729.27 | 40.6112170 | -106.3832240 | 0.00 | |
| 10900.00† | 90.508 | 179.972 | 8723.31 | 1509.86 | -1156.29 | 2016.83 | 2754782.49 | 1466629.28 | 40.6109426 | -106.3832239 | 0.00 | |
| 11000.00† | 90.508 | 179.972 | 8722.42 | 1608.14 | -1256.29 | 2016.88 | 2754781.53 | 1466529.30 | 40.6106681 | -106.3832237 | 0.00 | |
| 11100.00† | 90.508 | 179.972 | 8721.53 | 1706.41 | -1356.28 | 2016.93 | 2754780.58 | 1466429.31 | 40.6103936 | -106.3832236 | 0.00 | |
| 11200.00† | 90.508 | 179.972 | 8720.65 | 1804.69 | -1456.28 | 2016.98 | 2754779.62 | 1466329.32 | 40.6101192 | -106.3832234 | 0.00 | |
| 11300.00† | 90.508 | 179.972 | 8719.76 | 1902.96 | -1556.27 | 2017.03 | 2754778.67 | 1466229.33 | 40.6098447 | -106.3832233 | 0.00 | |
| 11400.00† | 90.508 | 179.972 | 8718.87 | 2001.24 | -1656.27 | 2017.07 | 2754777.71 | 1466129.34 | 40.6095702 | -106.3832231 | 0.00 | |
| 11453.45 | 90.508 | 179.972 | 8718.40 ² | 2053.76 | -1709.71 | 2017.10 | 2754777.20 | 1466075.90 | 40.6094235 | -106.3832230 | 0.00 | WP1 |
| 11500.00† | 91.435 | 180.057 | 8717.61 | 2099.50 | -1756.26 | 2017.09 | 2754776.72 | 1466029.36 | 40.6092958 | -106.3832231 | 2.00 | |
| 11550.10 | 92.433 | 180.148 | 8715.92 | 2148.69 | -1806.33 | 2017.00 | 2754776.13 | 1465979.29 | 40.6091583 | -106.3832234 | 2.00 | 3D Arc (J) |
| 11600.00† | 92.433 | 180.148 | 8713.80 | 2197.66 | -1856.19 | 2016.87 | 2754775.50 | 1465929.44 | 40.6090215 | -106.3832239 | 0.00 | |
| 11700.00† | 92.433 | 180.148 | 8709.56 | 2295.79 | -1956.10 | 2016.61 | 2754774.24 | 1465829.54 | 40.6087473 | -106.3832249 | 0.00 | |
| 11800.00† | 92.433 | 180.148 | 8705.31 | 2393.92 | -2056.01 | 2016.35 | 2754772.98 | 1465729.64 | 40.6084730 | -106.3832258 | 0.00 | |
| 11900.00† | 92.433 | 180.148 | 8701.07 | 2492.06 | -2155.92 | 2016.10 | 2754771.71 | 1465629.74 | 40.6081988 | -106.3832268 | 0.00 | |
| 12000.00† | 92.433 | 180.148 | 8696.82 | 2590.19 | -2255.82 | 2015.84 | 2754770.45 | 1465529.84 | 40.6079246 | -106.3832278 | 0.00 | |
| 12100.00† | 92.433 | 180.148 | 8692.58 | 2688.32 | -2355.73 | 2015.58 | 2754769.19 | 1465429.94 | 40.6076503 | -106.3832287 | 0.00 | |
| 12200.00† | 92.433 | 180.148 | 8688.33 | 2786.45 | -2455.64 | 2015.32 | 2754767.93 | 1465330.04 | 40.6073761 | -106.3832297 | 0.00 | |
| 12300.00† | 92.433 | 180.148 | 8684.09 | 2884.59 | -2555.55 | 2015.06 | 2754766.67 | 1465230.15 | 40.6071019 | -106.3832306 | 0.00 | |
| 12400.00† | 92.433 | 180.148 | 8679.84 | 2982.72 | -2655.46 | 2014.80 | 2754765.41 | 1465130.25 | 40.6068276 | -106.3832316 | 0.00 | |
| 12500.00† | 92.433 | 180.148 | 8675.60 | 3080.85 | -2755.37 | 2014.55 | 2754764.15 | 1465030.35 | 40.6065534 | -106.3832326 | 0.00 | |
| 12600.00† | 92.433 | 180.148 | 8671.35 | 3178.98 | -2855.28 | 2014.29 | 2754762.88 | 1464930.45 | 40.6062792 | -106.3832335 | 0.00 | |
| 12700.00† | 92.433 | 180.148 | 8667.11 | 3277.12 | -2955.19 | 2014.03 | 2754761.62 | 1464830.55 | 40.6060049 | -106.3832345 | 0.00 | |
| 12800.00† | 92.433 | 180.148 | 8662.86 | 3375.25 | -3055.10 | 2013.77 | 2754760.36 | 1464730.65 | 40.6057307 | -106.3832354 | 0.00 | |



Planned Wellpath Report

JANET 0780 9S-4H9 (REV-C.0) PWP

Page 5 of 10



REFERENCE WELLPATH IDENTIFICATION

| | | | |
|----------|--|----------|-----------------------|
| Operator | FULCRUM ENERGY OPERATING | Well | JANET 0780 9S-4H9 |
| Field | JACKSON COUNTY (NAD83/TN) | API | 05-057-06643 |
| Facility | SEC.04-T07N-R80W | Wellbore | JANET 0780 9S-4H9 PWB |
| Slot | SLOT#03 JANET 0780 9S-4H9 (378'FNL & 879'FEL,SEC.04) | | |

WELLPATH DATA (218 stations) † = interpolated, ‡ = extrapolated station

| MD [ft] | Inclination [°] | Azimuth [°] | TVD [ft] | Vert Sect [ft] | North [ft] | East [ft] | Grid East [US ft] | Grid North [US ft] | Latitude | Longitude | DLS [°/100ft] | Comments |
|-----------|-----------------|-------------|----------------------|----------------|------------|-----------|-------------------|--------------------|------------|--------------|---------------|------------|
| 12900.00† | 92.433 | 180.148 | 8658.62 | 3473.38 | -3155.01 | 2013.51 | 2754759.10 | 1464630.75 | 40.6054565 | -106.3832364 | 0.00 | |
| 13000.00† | 92.433 | 180.148 | 8654.37 | 3571.51 | -3254.92 | 2013.25 | 2754757.84 | 1464530.85 | 40.6051823 | -106.3832373 | 0.00 | |
| 13100.00† | 92.433 | 180.148 | 8650.13 | 3669.65 | -3354.83 | 2013.00 | 2754756.58 | 1464430.95 | 40.6049080 | -106.3832383 | 0.00 | |
| 13200.00† | 92.433 | 180.148 | 8645.88 | 3767.78 | -3454.74 | 2012.74 | 2754755.31 | 1464331.05 | 40.6046338 | -106.3832393 | 0.00 | |
| 13300.00† | 92.433 | 180.148 | 8641.63 | 3865.91 | -3554.65 | 2012.48 | 2754754.05 | 1464231.15 | 40.6043596 | -106.3832402 | 0.00 | |
| 13400.00† | 92.433 | 180.148 | 8637.39 | 3964.05 | -3654.56 | 2012.22 | 2754752.79 | 1464131.25 | 40.6040853 | -106.3832412 | 0.00 | |
| 13500.00† | 92.433 | 180.148 | 8633.14 | 4062.18 | -3754.47 | 2011.96 | 2754751.53 | 1464031.35 | 40.6038111 | -106.3832421 | 0.00 | |
| 13600.00† | 92.433 | 180.148 | 8628.90 | 4160.31 | -3854.38 | 2011.71 | 2754750.27 | 1463931.45 | 40.6035369 | -106.3832431 | 0.00 | |
| 13700.00† | 92.433 | 180.148 | 8624.65 | 4258.44 | -3954.29 | 2011.45 | 2754749.01 | 1463831.55 | 40.6032626 | -106.3832441 | 0.00 | |
| 13800.00† | 92.433 | 180.148 | 8620.41 | 4356.58 | -4054.20 | 2011.19 | 2754747.75 | 1463731.65 | 40.6029884 | -106.3832450 | 0.00 | |
| 13859.11 | 92.433 | 180.148 | 8617.90 ³ | 4414.59 | -4113.26 | 2011.04 | 2754747.00 | 1463672.60 | 40.6028263 | -106.3832456 | 0.00 | WP2 |
| 13900.00† | 93.251 | 180.148 | 8615.87 | 4454.70 | -4154.09 | 2010.93 | 2754746.48 | 1463631.77 | 40.6027142 | -106.3832460 | 2.00 | |
| 14000.00† | 95.251 | 180.147 | 8608.46 | 4552.64 | -4253.81 | 2010.67 | 2754745.23 | 1463532.06 | 40.6024405 | -106.3832469 | 2.00 | |
| 14100.00† | 97.251 | 180.146 | 8597.57 | 4650.27 | -4353.21 | 2010.42 | 2754743.97 | 1463432.67 | 40.6021677 | -106.3832479 | 2.00 | |
| 14200.00† | 99.251 | 180.146 | 8583.22 | 4747.47 | -4452.17 | 2010.17 | 2754742.73 | 1463333.72 | 40.6018960 | -106.3832488 | 2.00 | |
| 14222.50 | 99.701 | 180.145 | 8579.52 | 4769.27 | -4474.37 | 2010.11 | 2754742.45 | 1463311.53 | 40.6018351 | -106.3832490 | 2.00 | 3D Arc (J) |
| 14300.00† | 99.701 | 180.145 | 8566.46 | 4844.31 | -4550.76 | 2009.92 | 2754741.49 | 1463235.15 | 40.6016254 | -106.3832498 | 0.00 | |
| 14400.00† | 99.701 | 180.145 | 8549.61 | 4941.12 | -4649.33 | 2009.67 | 2754740.25 | 1463136.59 | 40.6013549 | -106.3832507 | 0.00 | |
| 14500.00† | 99.701 | 180.145 | 8532.76 | 5037.94 | -4747.90 | 2009.42 | 2754739.01 | 1463038.03 | 40.6010843 | -106.3832516 | 0.00 | |
| 14600.00† | 99.701 | 180.145 | 8515.91 | 5134.76 | -4846.46 | 2009.17 | 2754737.77 | 1462939.47 | 40.6008138 | -106.3832525 | 0.00 | |
| 14700.00† | 99.701 | 180.145 | 8499.06 | 5231.58 | -4945.03 | 2008.92 | 2754736.53 | 1462840.91 | 40.6005432 | -106.3832535 | 0.00 | |
| 14800.00† | 99.701 | 180.145 | 8482.21 | 5328.40 | -5043.60 | 2008.67 | 2754735.29 | 1462742.35 | 40.6002727 | -106.3832544 | 0.00 | |
| 14900.00† | 99.701 | 180.145 | 8465.36 | 5425.21 | -5142.17 | 2008.42 | 2754734.05 | 1462643.79 | 40.6000021 | -106.3832553 | 0.00 | |
| 15000.00† | 99.701 | 180.145 | 8448.51 | 5522.03 | -5240.74 | 2008.17 | 2754732.81 | 1462545.23 | 40.5997315 | -106.3832563 | 0.00 | |
| 15100.00† | 99.701 | 180.145 | 8431.66 | 5618.85 | -5339.31 | 2007.92 | 2754731.57 | 1462446.67 | 40.5994610 | -106.3832572 | 0.00 | |
| 15200.00† | 99.701 | 180.145 | 8414.81 | 5715.67 | -5437.88 | 2007.67 | 2754730.33 | 1462348.11 | 40.5991904 | -106.3832581 | 0.00 | |
| 15300.00† | 99.701 | 180.145 | 8397.96 | 5812.48 | -5536.45 | 2007.42 | 2754729.09 | 1462249.55 | 40.5989199 | -106.3832591 | 0.00 | |
| 15400.00† | 99.701 | 180.145 | 8381.11 | 5909.30 | -5635.02 | 2007.16 | 2754727.85 | 1462150.99 | 40.5986493 | -106.3832600 | 0.00 | |
| 15500.00† | 99.701 | 180.145 | 8364.26 | 6006.12 | -5733.59 | 2006.91 | 2754726.61 | 1462052.43 | 40.5983788 | -106.3832609 | 0.00 | |
| 15600.00† | 99.701 | 180.145 | 8347.41 | 6102.94 | -5832.16 | 2006.66 | 2754725.37 | 1461953.87 | 40.5981082 | -106.3832618 | 0.00 | |
| 15700.00† | 99.701 | 180.145 | 8330.56 | 6199.75 | -5930.73 | 2006.41 | 2754724.13 | 1461855.31 | 40.5978377 | -106.3832628 | 0.00 | |
| 15800.00† | 99.701 | 180.145 | 8313.71 | 6296.57 | -6029.30 | 2006.16 | 2754722.89 | 1461756.75 | 40.5975671 | -106.3832637 | 0.00 | |
| 15900.00† | 99.701 | 180.145 | 8296.86 | 6393.39 | -6127.87 | 2005.91 | 2754721.65 | 1461658.19 | 40.5972966 | -106.3832646 | 0.00 | |
| 16000.00† | 99.701 | 180.145 | 8280.01 | 6490.21 | -6226.44 | 2005.66 | 2754720.41 | 1461559.63 | 40.5970260 | -106.3832656 | 0.00 | |
| 16000.64 | 99.701 | 180.145 | 8279.90 ⁴ | 6490.82 | -6227.07 | 2005.66 | 2754720.40 | 1461559.00 | 40.5970243 | -106.3832656 | 0.00 | WP3 |
| 16100.00† | 101.688 | 180.143 | 8261.46 | 6586.72 | -6324.70 | 2005.42 | 2754719.17 | 1461461.38 | 40.5967563 | -106.3832665 | 2.00 | |
| 16106.86 | 101.825 | 180.143 | 8260.06 | 6593.32 | -6331.42 | 2005.40 | 2754719.09 | 1461454.66 | 40.5967378 | -106.3832665 | 2.00 | 3D Arc (J) |
| 16200.00† | 101.825 | 180.143 | 8240.98 | 6682.86 | -6422.58 | 2005.17 | 2754717.95 | 1461363.51 | 40.5964876 | -106.3832674 | 0.00 | |
| 16300.00† | 101.825 | 180.143 | 8220.48 | 6779.00 | -6520.46 | 2004.93 | 2754716.72 | 1461265.64 | 40.5962190 | -106.3832683 | 0.00 | |
| 16400.00† | 101.825 | 180.143 | 8199.99 | 6875.14 | -6618.34 | 2004.68 | 2754715.49 | 1461167.77 | 40.5959503 | -106.3832692 | 0.00 | |
| 16500.00† | 101.825 | 180.143 | 8179.50 | 6971.28 | -6716.21 | 2004.44 | 2754714.26 | 1461069.91 | 40.5956817 | -106.3832701 | 0.00 | |
| 16600.00† | 101.825 | 180.143 | 8159.01 | 7067.41 | -6814.09 | 2004.19 | 2754713.03 | 1460972.04 | 40.5954130 | -106.3832710 | 0.00 | |
| 16700.00† | 101.825 | 180.143 | 8138.51 | 7163.55 | -6911.97 | 2003.95 | 2754711.81 | 1460874.17 | 40.5951444 | -106.3832719 | 0.00 | |
| 16800.00† | 101.825 | 180.143 | 8118.02 | 7259.69 | -7009.85 | 2003.70 | 2754710.58 | 1460776.30 | 40.5948757 | -106.3832729 | 0.00 | |
| 16900.00† | 101.825 | 180.143 | 8097.53 | 7355.83 | -7107.72 | 2003.46 | 2754709.35 | 1460678.44 | 40.5946070 | -106.3832738 | 0.00 | |



Planned Wellpath Report

JANET 0780 9S-4H9 (REV-C.0) PWP

Page 6 of 10



REFERENCE WELLPATH IDENTIFICATION

| | | | |
|----------|--|----------|-----------------------|
| Operator | FULCRUM ENERGY OPERATING | Well | JANET 0780 9S-4H9 |
| Field | JACKSON COUNTY (NAD83/TN) | API | 05-057-06643 |
| Facility | SEC.04-T07N-R80W | Wellbore | JANET 0780 9S-4H9 PWB |
| Slot | SLOT#03 JANET 0780 9S-4H9 (378'FNL & 879'FEL,SEC.04) | | |

WELLPATH DATA (218 stations) † = interpolated, ‡ = extrapolated station

| MD [ft] | Inclination [°] | Azimuth [°] | TVD [ft] | Vert Sect [ft] | North [ft] | East [ft] | Grid East [US ft] | Grid North [US ft] | Latitude | Longitude | DLS [°/100ft] | Comments |
|-----------|-----------------|-------------|----------------------|----------------|------------|-----------|-------------------|--------------------|------------|--------------|---------------|------------|
| 17000.00† | 101.825 | 180.143 | 8077.04 | 7451.97 | -7205.60 | 2003.21 | 2754708.12 | 1460580.57 | 40.5943384 | -106.3832747 | 0.00 | |
| 17100.00† | 101.825 | 180.143 | 8056.54 | 7548.10 | -7303.48 | 2002.97 | 2754706.90 | 1460482.70 | 40.5940697 | -106.3832756 | 0.00 | |
| 17200.00† | 101.825 | 180.143 | 8036.05 | 7644.24 | -7401.36 | 2002.72 | 2754705.67 | 1460384.83 | 40.5938011 | -106.3832765 | 0.00 | |
| 17300.00† | 101.825 | 180.143 | 8015.56 | 7740.38 | -7499.23 | 2002.48 | 2754704.44 | 1460286.97 | 40.5935324 | -106.3832774 | 0.00 | |
| 17400.00† | 101.825 | 180.143 | 7995.06 | 7836.52 | -7597.11 | 2002.23 | 2754703.21 | 1460189.10 | 40.5932638 | -106.3832783 | 0.00 | |
| 17500.00† | 101.825 | 180.143 | 7974.57 | 7932.66 | -7694.99 | 2001.99 | 2754701.99 | 1460091.23 | 40.5929951 | -106.3832792 | 0.00 | |
| 17600.00† | 101.825 | 180.143 | 7954.08 | 8028.80 | -7792.86 | 2001.74 | 2754700.76 | 1459993.36 | 40.5927265 | -106.3832801 | 0.00 | |
| 17700.00† | 101.825 | 180.143 | 7933.59 | 8124.93 | -7890.74 | 2001.50 | 2754699.53 | 1459895.49 | 40.5924578 | -106.3832810 | 0.00 | |
| 17800.00† | 101.825 | 180.143 | 7913.09 | 8221.07 | -7988.62 | 2001.25 | 2754698.30 | 1459797.63 | 40.5921892 | -106.3832820 | 0.00 | |
| 17900.00† | 101.825 | 180.143 | 7892.60 | 8317.21 | -8086.50 | 2001.01 | 2754697.07 | 1459699.76 | 40.5919205 | -106.3832829 | 0.00 | |
| 18000.00† | 101.825 | 180.143 | 7872.11 | 8413.35 | -8184.37 | 2000.76 | 2754695.85 | 1459601.89 | 40.5916518 | -106.3832838 | 0.00 | |
| 18077.14 | 101.825 | 180.143 | 7856.30 ⁵ | 8487.51 | -8259.87 | 2000.57 | 2754694.90 | 1459526.40 | 40.5914446 | -106.3832845 | 0.00 | WP4 |
| 18100.00† | 101.368 | 180.143 | 7851.70 | 8509.51 | -8282.27 | 2000.52 | 2754694.62 | 1459504.01 | 40.5913831 | -106.3832847 | 2.00 | |
| 18200.00† | 99.368 | 180.143 | 7833.71 | 8606.12 | -8380.63 | 2000.27 | 2754693.39 | 1459405.65 | 40.5911131 | -106.3832856 | 2.00 | |
| 18300.00† | 97.368 | 180.143 | 7819.16 | 8703.29 | -8479.56 | 2000.03 | 2754692.15 | 1459306.73 | 40.5908416 | -106.3832865 | 2.00 | |
| 18400.00† | 95.368 | 180.143 | 7808.06 | 8800.90 | -8578.94 | 1999.78 | 2754690.90 | 1459207.37 | 40.5905688 | -106.3832874 | 2.00 | |
| 18493.43 | 93.499 | 180.142 | 7800.84 | 8892.39 | -8672.08 | 1999.55 | 2754689.73 | 1459114.23 | 40.5903132 | -106.3832883 | 2.00 | 3D Arc (J) |
| 18500.00† | 93.499 | 180.142 | 7800.44 | 8898.84 | -8678.64 | 1999.53 | 2754689.65 | 1459107.67 | 40.5902952 | -106.3832884 | 0.00 | |
| 18600.00† | 93.499 | 180.142 | 7794.34 | 8996.88 | -8778.46 | 1999.28 | 2754688.40 | 1459007.87 | 40.5900212 | -106.3832893 | 0.00 | |
| 18700.00† | 93.499 | 180.142 | 7788.23 | 9094.92 | -8878.27 | 1999.03 | 2754687.15 | 1458908.07 | 40.5897472 | -106.3832902 | 0.00 | |
| 18800.00† | 93.499 | 180.142 | 7782.13 | 9192.96 | -8978.08 | 1998.79 | 2754685.90 | 1458808.26 | 40.5894733 | -106.3832911 | 0.00 | |
| 18900.00† | 93.499 | 180.142 | 7776.03 | 9291.00 | -9077.90 | 1998.54 | 2754684.65 | 1458708.46 | 40.5891993 | -106.3832920 | 0.00 | |
| 19000.00† | 93.499 | 180.142 | 7769.92 | 9389.04 | -9177.71 | 1998.29 | 2754683.40 | 1458608.66 | 40.5889253 | -106.3832930 | 0.00 | |
| 19100.00† | 93.499 | 180.142 | 7763.82 | 9487.08 | -9277.52 | 1998.04 | 2754682.15 | 1458508.85 | 40.5886513 | -106.3832939 | 0.00 | |
| 19200.00† | 93.499 | 180.142 | 7757.71 | 9585.12 | -9377.34 | 1997.79 | 2754680.90 | 1458409.05 | 40.5883774 | -106.3832948 | 0.00 | |
| 19300.00† | 93.499 | 180.142 | 7751.61 | 9683.16 | -9477.15 | 1997.55 | 2754679.65 | 1458309.25 | 40.5881034 | -106.3832957 | 0.00 | |
| 19400.00† | 93.499 | 180.142 | 7745.51 | 9781.20 | -9576.96 | 1997.30 | 2754678.40 | 1458209.44 | 40.5878294 | -106.3832967 | 0.00 | |
| 19500.00† | 93.499 | 180.142 | 7739.40 | 9879.24 | -9676.78 | 1997.05 | 2754677.15 | 1458109.64 | 40.5875555 | -106.3832976 | 0.00 | |
| 19600.00† | 93.499 | 180.142 | 7733.30 | 9977.28 | -9776.59 | 1996.80 | 2754675.90 | 1458009.84 | 40.5872815 | -106.3832985 | 0.00 | |
| 19700.00† | 93.499 | 180.142 | 7727.19 | 10075.32 | -9876.40 | 1996.55 | 2754674.65 | 1457910.03 | 40.5870075 | -106.3832994 | 0.00 | |
| 19800.00† | 93.499 | 180.142 | 7721.09 | 10173.36 | -9976.22 | 1996.31 | 2754673.40 | 1457810.23 | 40.5867336 | -106.3833003 | 0.00 | |
| 19900.00† | 93.499 | 180.142 | 7714.99 | 10271.40 | -10076.03 | 1996.06 | 2754672.15 | 1457710.43 | 40.5864596 | -106.3833013 | 0.00 | |
| 20000.00† | 93.499 | 180.142 | 7708.88 | 10369.44 | -10175.84 | 1995.81 | 2754670.90 | 1457610.62 | 40.5861856 | -106.3833022 | 0.00 | |
| 20100.00† | 93.499 | 180.142 | 7702.78 | 10467.48 | -10275.66 | 1995.56 | 2754669.65 | 1457510.82 | 40.5859117 | -106.3833031 | 0.00 | |
| 20200.00† | 93.499 | 180.142 | 7696.67 | 10565.52 | -10375.47 | 1995.31 | 2754668.40 | 1457411.02 | 40.5856377 | -106.3833040 | 0.00 | |
| 20300.00† | 93.499 | 180.142 | 7690.57 | 10663.56 | -10475.28 | 1995.07 | 2754667.15 | 1457311.22 | 40.5853637 | -106.3833050 | 0.00 | |
| 20400.00† | 93.499 | 180.142 | 7684.47 | 10761.60 | -10575.09 | 1994.82 | 2754665.90 | 1457211.41 | 40.5850898 | -106.3833059 | 0.00 | |
| 20407.64 | 93.499 | 180.142 | 7684.00 ⁶ | 10769.08 | -10582.72 | 1994.80 | 2754665.80 | 1457203.79 | 40.5850688 | -106.3833060 | 0.00 | BHL |



Planned Wellpath Report

JANET 0780 9S-4H9 (REV-C.0) PWP

Page 7 of 10



REFERENCE WELLPATH IDENTIFICATION

| | | | |
|----------|--|----------|-----------------------|
| Operator | FULCRUM ENERGY OPERATING | Well | JANET 0780 9S-4H9 |
| Field | JACKSON COUNTY (NAD83/TN) | API | 05-057-06643 |
| Facility | SEC.04-T07N-R80W | Wellbore | JANET 0780 9S-4H9 PWB |
| Slot | SLOT#03 JANET 0780 9S-4H9 (378'FNL & 879'FEL,SEC.04) | | |



Planned Wellpath Report

JANET 0780 9S-4H9 (REV-C.0) PWP

Page 8 of 10



REFERENCE WELLPATH IDENTIFICATION

| | | | |
|----------|--|----------|-----------------------|
| Operator | FULCRUM ENERGY OPERATING | Well | JANET 0780 9S-4H9 |
| Field | JACKSON COUNTY (NAD83/TN) | API | 05-057-06643 |
| Facility | SEC.04-T07N-R80W | Wellbore | JANET 0780 9S-4H9 PWB |
| Slot | SLOT#03 JANET 0780 9S-4H9 (378'FNL & 879'FEL,SEC.04) | | |

TARGETS

| Name | MD [ft] | TVD [ft] | North [ft] | East [ft] | Grid East [US ft] | Grid North [US ft] | Latitude | Longitude | Shape |
|--|----------|----------|------------|-----------|-------------------|--------------------|------------|--------------|---------|
| SEC.04-T07N-R80W | N/A | 6.50 | 420.54 | 538.80 | 2753320.41 | 1468220.84 | 40.6152709 | -106.3885471 | polygon |
| 2D Polygon: dimensions not calculated | | | | | | | | | |
| SEC.05-T07N-R80W | N/A | 6.50 | 410.54 | 538.80 | 2753320.31 | 1468210.84 | 40.6152434 | -106.3885471 | polygon |
| 2D Polygon: dimensions not calculated | | | | | | | | | |
| SEC.09-T07N-R80W | N/A | 6.50 | 399.60 | 538.00 | 2753319.39 | 1468199.90 | 40.6152134 | -106.3885500 | polygon |
| 2D Polygon: dimensions not calculated | | | | | | | | | |
| SEC.33-T08N-R80W | N/A | 6.50 | 430.54 | 538.80 | 2753320.51 | 1468230.84 | 40.6152983 | -106.3885471 | polygon |
| 2D Polygon: dimensions not calculated | | | | | | | | | |
| JANET 0780 9S-4H9 BHL Rev-2 (291'FSL & 1307'FWL,SEC.09) | N/A | 7684.00 | -10391.19 | 1995.18 | 2754668.10 | 1457395.30 | 40.5855945 | -106.3833045 | point |
| 6) JANET 0780 9S-4H9 BHL Rev-3 (100'FSL & 1308'FWL,SEC.09) | 20407.64 | 7684.00 | -10582.72 | 1994.80 | 2754665.80 | 1457203.79 | 40.5850688 | -106.3833060 | point |
| 5) JANET 0780 9S-4H9 WP4 | 18077.14 | 7856.30 | -8259.87 | 2000.57 | 2754694.90 | 1459526.40 | 40.5914446 | -106.3832845 | point |
| 4) JANET 0780 9S-4H9 WP3 | 16000.64 | 8279.90 | -6227.07 | 2005.66 | 2754720.40 | 1461559.00 | 40.5970243 | -106.3832656 | point |
| 3) JANET 0780 9S-4H9 WP2 | 13859.11 | 8617.90 | -4113.26 | 2011.04 | 2754747.00 | 1463672.60 | 40.6028263 | -106.3832456 | point |
| 2) JANET 0780 9S-4H9 WP1 | 11453.45 | 8718.40 | -1709.71 | 2017.10 | 2754777.20 | 1466075.90 | 40.6094235 | -106.3832230 | point |
| JANET 0780 9S-4H9 LP Rev-2 (353'FNL & 1140'FWL,SEC.04) | N/A | 8736.00 | 21.86 | 2021.41 | 2754798.90 | 1467807.30 | 40.6141764 | -106.3832070 | point |
| 1) JANET 0780 9S-4H9 LP Rev-3 (100'FNL & 1128'FWL,SEC.04) | 9468.42 | 8736.00 | 275.24 | 2016.13 | 2754796.16 | 1468060.71 | 40.6148718 | -106.3832260 | point |
| JANET 0780 S5 Hardlines (300'FWL & 100'FSL) | N/A | 9000.00 | 399.60 | 538.00 | 2753319.39 | 1468199.90 | 40.6152134 | -106.3885500 | polygon |
| 2D Polygon: dimensions not calculated | | | | | | | | | |



Planned Wellpath Report

JANET 0780 9S-4H9 (REV-C.0) PWP

Page 9 of 10



REFERENCE WELLPATH IDENTIFICATION

| | | | |
|----------|--|----------|-----------------------|
| Operator | FULCRUM ENERGY OPERATING | Well | JANET 0780 9S-4H9 |
| Field | JACKSON COUNTY (NAD83/TN) | API | 05-057-06643 |
| Facility | SEC.04-T07N-R80W | Wellbore | JANET 0780 9S-4H9 PWB |
| Slot | SLOT#03 JANET 0780 9S-4H9 (378'FNL & 879'FEL,SEC.04) | | |

SURVEY PROGRAM - Ref Wellbore: JANET 0780 9S-4H9 PWB Ref Wellpath: JANET 0780 9S-4H9 (REV-C.0) PWP

| Start MD [ft] | End MD [ft] | Positional Uncertainty Model | Log Name/Comment | Wellbore |
|---------------|-------------|--|------------------|-----------------------|
| 25.50 | 4965.31 | OWSG MWD rev2 - Standard | | JANET 0780 9S-4H9 PWB |
| 4965.31 | 20407.64 | BH AutoTrak Curve/eXpress (2019) (HRGM, Short spacing) | | JANET 0780 9S-4H9 PWB |



Planned Wellpath Report

JANET 0780 9S-4H9 (REV-C.0) PWP

Page 10 of 10



REFERENCE WELLPATH IDENTIFICATION

| | | | |
|----------|--|----------|-----------------------|
| Operator | FULCRUM ENERGY OPERATING | Well | JANET 0780 9S-4H9 |
| Field | JACKSON COUNTY (NAD83/TN) | API | 05-057-06643 |
| Facility | SEC.04-T07N-R80W | Wellbore | JANET 0780 9S-4H9 PWB |
| Slot | SLOT#03 JANET 0780 9S-4H9 (378'FNL & 879'FEL,SEC.04) | | |

DESIGN COMMENTS

| MD [ft] | Inclination [°] | Azimuth [°] | TVD [ft] | Comment |
|----------|-----------------|-------------|----------|----------------|
| 25.50 | 0.000 | 61.318 | 25.50 | Tie On |
| 500.00 | 0.000 | 61.318 | 500.00 | End of Tangent |
| 1317.52 | 16.350 | 61.318 | 1306.47 | Build (XS) |
| 8240.29 | 16.350 | 61.318 | 7949.28 | KOP |
| 9468.42 | 90.508 | 179.972 | 8736.00 | LP |
| 11453.45 | 90.508 | 179.972 | 8718.40 | WP1 |
| 11550.10 | 92.433 | 180.148 | 8715.92 | 3D Arc (J) |
| 13859.11 | 92.433 | 180.148 | 8617.90 | WP2 |
| 14222.50 | 99.701 | 180.145 | 8579.52 | 3D Arc (J) |
| 16000.64 | 99.701 | 180.145 | 8279.90 | WP3 |
| 16106.86 | 101.825 | 180.143 | 8260.06 | 3D Arc (J) |
| 18077.14 | 101.825 | 180.143 | 7856.30 | WP4 |
| 18493.43 | 93.499 | 180.142 | 7800.84 | 3D Arc (J) |
| 20407.64 | 93.499 | 180.142 | 7684.00 | BHL |