

DECOMMISSIONING REPORT
GOETZEL 32C-30-M

ECMC REMEDIATION # 35166

Prepared for:



PDC ENERGY

1099 18th Street
Suite 1500
Denver, CO 80202

Prepared by:





4725 Independence Street
Wheat Ridge, CO 80033

FL01R-W@7'
(06/05/2025)
PID = 0.3 ppm

BKG01@2'
(06/06/2025)
PID = 0.3 ppm
BKG01@3'
(06/06/2025)
PID = 0.3 ppm
BKG01@4'
(06/06/2025)
PID = 0.2 ppm

FL01R-S@6'
(06/06/2025)
PID = 0.4 ppm

Legend

-  Soil Sample Location – Lab Analyzed (Collected via Trimble GPS)
-  Flowline Location – Abandoned in Place

Notes

1) All locations are approximate unless otherwise noted.

GPS – Global Positioning System
PID – Photoionization Detector
ppm – Parts per million

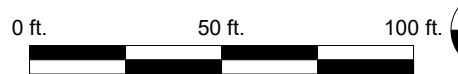


Image Source: Google Earth; Google 2021
Projection: WGS 1984, UTM Zone 13 North



DATE:	August 15, 2025
DESIGNED BY:	B. Nelson
DRAWN BY:	L. Moran



Tasman, Inc.
4725 Independence Street
Wheat Ridge, CO 80033

PDC Energy, Inc. – 69175 – DJ Basin
Goetzl 32C-30-M Flowline
SWNE, Section 29, Township 6 North, Range 66 West
Weld County, Colorado

**SOIL SAMPLE
LOCATION MAP**
(06/05/2025 & 06/06/2025)

**FIGURE
1**

TABLE 1
FIELD DATA SUMMARY TABLE
PDC ENERGY, INC. - 69175
GOETZEL 32C-30-M FLOWLINE, WELD COUNTY, COLORADO
REM # 35166



Sample ID	Sample Date	Depth (ft. bgs)	GPS Data ¹ Latitude/Longitude		PDOP Value	VOC Concentration ² (ppm)
FL01R-W@7'	06/05/2025	7	40.460607	-104.801187	0.9	0.3
FL01R-S@6'	06/06/2025	6	40.459996	-104.801112	0.9	0.4
BKG01@2'	06/06/2025	2	40.460052	-104.802012	1.0	0.3
BKG01@3'	06/06/2025	3	40.460052	-104.802012	1.0	0.3
BKG01@4'	06/06/2025	4	40.460052	-104.802012	1.0	0.2

Notes:

1. Global Positioning System (GPS) data is provided in decimal degrees using North American Datum (NAD) 83 UTM Zone 13 North.

2. Volatile organic compound (VOC) concentrations are measured in the field using a photoionization detector (PID).

PDOP = Position Dilution of Precision

ppm = Parts per million

ft. = Feet

bgs = Below ground surface

NC = Not collected

NA = Not analyzed

Source material characterization sample, excavated and transported off site for disposal.

Material excavated and transported off site for disposal.

TABLE 2
SUMMARY OF VOLATILE ORGANIC SOIL CHEMISTRY DATA
PDC ENERGY, INC. - 69175
GOETZEL 32C-30-M FLOWLINE, WELD COUNTY, COLORADO
REM # 35166



Sample ID	Sample Date	Depth (ft. bgs)	Benzene (mg/kg)	Toluene (mg/kg)	Ethyl-Benzene (mg/kg)	Xylenes (mg/kg)	1,2,4-Trimethyl-Benzene (mg/kg)	1,3,5-Trimethyl-Benzene (mg/kg)	Naphthalene (mg/kg)	TPH (mg/kg)	TPH GRO (mg/kg)	TPH DRO (mg/kg)	TPH ORO (mg/kg)
ECMC Table 915-1 Limits (Residential SSL)			1.2	490	5.8	58	30	27	2	500	500**		
ECMC Table 915-1 Limits (Protection of Groundwater SSL)			0.0026	0.69	0.78	9.9	0.0081	0.0087	0.0038	500	500**		
FL01R-W@7'	06/05/2025	7	<0.0011	<0.0021	<0.0021	<0.0021	<0.0021	<0.0021	<0.0022	15.7	<0.21	7.29	8.40
FL01R-S@6'	06/06/2025	6	<0.0024	<0.0023	<0.0023	<0.0023	<0.0023	<0.0023	<0.0022	10.0	<0.23	<4.7	10.0

Notes:

1. **Bold** values exceed the ECMC Table 915-1 limit(s).
2. Red & blue highlighted soil analytical values indicate an exceedance of the referenced soil screening level (SSL).
3. ** Summation of GRO+DRO+ORO must be less than 500 mg/kg.

ECMC = Energy and Carbon Management Commission

(<) = Analytical result is less than the indicated laboratory reporting limit.

TPH-GRO = Total petroleum hydrocarbons - gasoline range organics

TPH-DRO = Total petroleum hydrocarbons - diesel range organics

TPH-ORO = Total petroleum hydrocarbons - oil range organics

mg/kg = Milligrams per kilogram

ft. = Feet

bgs = Below ground surface

NA = Not analyzed

Source material characterization sample, excavated and transported off site for disposal.

Material excavated and transported off site for disposal.

TABLE 3
SUMMARY OF POLYCYCLIC AROMATIC HYDROCARBON SOIL CHEMISTRY DATA
PDC ENERGY, INC. - 69175
GOETZEL 32C-30-M FLOWLINE, WELD COUNTY, COLORADO
REM # 35166



Sample ID	Sample Date	Depth (ft. bgs)	Acenaphthene (mg/kg)	Anthracene (mg/kg)	Benzo (a) Anthracene (mg/kg)	Benzo (a) Pyrene (mg/kg)	Benzo (b) Fluoranthene (mg/kg)	Benzo (k) Fluoranthene (mg/kg)	Chrysene (mg/kg)	Dibenzo (a,h) Anthracene (mg/kg)	Fluoranthene (mg/kg)	Fluorene (mg/kg)	Indeno (1,2,3-cd) Pyrene (mg/kg)	Pyrene (mg/kg)	1-Methyl - Naphthalene (mg/kg)	2-Methyl - Naphthalene (mg/kg)
ECMC Table 915-1 Limits (Residential SSL)			360	1800	1.1	0.11	1.1	11	110	0.11	240	240	1.1	180	18	24
ECMC Table 915-1 Limits (Protection of Groundwater SSL)			0.55	5.8	0.011	0.24	0.3	2.9	9	0.096	8.9	0.54	0.98	1.3	0.006	0.019
FL01R-W@7'	06/05/2025	7	<0.0045	<0.0045	<0.0056	<0.0045	<0.0045	<0.0045	<0.0045	<0.0045	<0.0045	<0.0045	<0.0045	<0.0045	<0.0045	<0.0045
FL01R-S@6'	06/06/2025	6	<0.0043	<0.0043	<0.0054	<0.0043	<0.0043	<0.0043	<0.0043	<0.0043	<0.0043	<0.0043	<0.0043	<0.0043	<0.0043	<0.0043

Notes:

- 1. Bold** values exceed the ECMC Table 915-1 limit(s).
- Red & blue highlighted soil analytical values indicate an exceedance of the referenced soil screening level (SSL).
- * Indicates laboratory minimum detection limit in excess of SSL.

ECMC = Energy and Carbon Management Commission

(<) = Analytical result is less than the indicated laboratory reporting limit.

mg/kg = Milligrams per kilogram

ft. = Feet

bgs = Below ground surface

NA = Not analyzed

Source material characterization sample, excavated and transported off site for disposal.

Material excavated and transported off site for disposal.

TABLE 4
SUMMARY OF SOIL SUITABILITY FOR RECLAMATION
PDC ENERGY, INC. - 69175
GOETZEL 32C-30-M FLOWLINE, WELD COUNTY, COLORADO
REM # 35166



Sample ID	Sample Date	Depth (ft. bgs)	pH (Standard Units)	EC (mmhos/cm)	SAR (Standard Units)	Boron (mg/L)
ECMC Table 915-1 Soil Suitability Limits			6 - 8.3	<4	<6	2
FL01R-W@7'	06/05/2025	7	8.04	0.37	0.163	<0.50
FL01R-S@6'	06/06/2025	6	7.88	0.61	1.03	<0.50
BKG01@2'	06/06/2025	2	7.63	0.75	1.17	<0.50
BKG01@3'	06/06/2025	3	7.73	0.75	0.988	<0.50
BKG01@4'	06/06/2025	4	7.68	0.65	0.952	<0.50
Maximum Background Concentration			-	-	-	-

Notes:

1. **Bold** faced values exceed the ECMC Table 915-1 limit(s), but are within background concentrations.
2. **Bold** faced values exceed the ECMC Table 915-1 limit(s) and native background concentrations.
3. Brown highlighted soil analytical values indicate a regulatory exceedance.

ECMC = Energy and Carbon Management Commission

(<) = Analytical result is less than the indicated laboratory reporting limit.

mg/L = Milligrams per liter

ft. = Feet

bgs = Below ground surface

NA = Not analyzed

EC = Electrical conductivity

SAR = Sodium adsorption ratio

mmhos/cm = Millimhos per centimeter

Source material characterization sample, excavated and transported off site for disposal.

Material excavated and transported off site for disposal.

TABLE 5
SUMMARY OF METALS IN SOIL CHEMISTRY DATA
PDC ENERGY, INC. - 69175
GOETZEL 32C-30-M FLOWLINE, WELD COUNTY, COLORADO
REM # 35166



Sample ID	Sample Date	Depth (ft. bgs)	Arsenic (mg/kg)	Barium (mg/kg)	Cadmium (mg/kg)	Chromium (VI) ⁶ (mg/kg)	Copper (mg/kg)	Lead (mg/kg)	Nickel (mg/kg)	Selenium (mg/kg)	Silver (mg/kg)	Zinc (mg/kg)
ECMC Table 915-1 Limits (Residential SSL)			0.68	15000	71	0.3	3100	400	1500	390	390	23000
ECMC Table 915-1 Limits (Protection of Groundwater SSL)			0.29	82	0.38	0.00067	46	14	26	0.26	0.8	370
FL01R-W@7'	06/05/2025	7	4.8	207	0.20	<0.49	8.9	7.9	10.3	<0.23	<0.059	32.7
FL01R-S@6'	06/06/2025	6	4.9	90.1	0.20	<0.48	9.2	8.3	10.5	0.25	<0.056	36.6
BKG01@2'	06/06/2025	2	4.6	101	0.18	<0.44	7.9	7.7	10.5	0.21	<0.050	30.8
BKG01@3'	06/06/2025	3	5.1	95.3	0.19	<0.45	9.0	9.3	12.0	0.23	<0.052	37.7
BKG01@4'	06/06/2025	4	4.8	102	0.12	<0.42	7.0	7.2	8.8	<0.21	<0.052	28.8
1.25x Maximum Background Concentration			6.4	128	-	-	-	-	-	-	-	-

Notes:

- Bold** faced values exceed the ECMC Table 915-1 limit(s), but are within 1.25x background concentrations.
- Red** faced values exceed the ECMC Table 915-1 limit(s) and native background concentrations.
- Red & blue highlighted soil analytical values indicate an exceedance of the referenced soil screening level (SSL).
- Reporting limit used for 1.25 multiplier when all background results for a specific metal are non-detect.
- * Indicates laboratory minimum detection limit in excess of SSL.
- Compound falls within the ECMC Table 915-1 footnote 9.

ECMC = Energy & Carbon Management Commission

(<) = Analytical result is less than the indicated laboratory reporting limit.

mg/kg = Milligrams per kilogram

ft. = Feet

bgs = Below ground surface

NA = Not analyzed

Source material characterization sample, excavated and transported off site for disposal.

Material excavated and transported off site for disposal.



CLIENT: PDC Energy, Inc. or PDC Permian		SITE NAME: Goetzel 32C-30-M					DATE: 6/5/2025	REM. PROJECT #: 35166	WEATHER: 70s, sunny	
SITE DIRECTIONS: CR27/CR66, turn E on CR66 0.3 mi, then S 0.2 mi into							JOB#: 10531			
LEGALS AND LAT/LONG: 40.460623, -104.801189							TASMAN PERSONNEL: M. Dilger			
SOIL TYPES: Lean Clay - CL							SURFACE GRADIENT: Northeast			
SOIL SAMPLING							FACILITY INFRASTRUCTURE			
Date/Time	Soil Sample ID	PID (ppm)	Visual	Olfactory	Photo?	Grab or Lab Sample?	EQUIPMENT	Quantity		
06-05-2025 13:10	FL01R-W@7'	0.3	No Staining	No Odor	Yes	Lab	Buried or Partially Buried Vessel			
06-06-2025 10:00	FL01R-S@6'	0.4	No Staining	No Odor	Yes	Lab	Separator			
06-06-2025 10:33	BKG01@2'	0.3	No Staining	No Odor	Yes	Lab	Emission Control Device (ECD)			
06-06-2025 10:36	BKG01@3'	0.3	No Staining	No Odor	Yes	Lab	Dump Line			
06-06-2025 10:39	BKG01@4'	0.2	No Staining	No Odor	Yes	Lab	Wellhead			
							Flowline	✓		
							Other:			
							Soil Loads Removed			
							IMPACTED SOIL IDENTIFIED? No			
							ESTIMATED VOLUME OF IMPACTS:			
							Date	Number	CY	
							Total Removed	0	0	
							Disposal Facility:			
							Groundwater Recovery			
							DATE GW ENCOUNTERED:		DEPTH:	
							GROUNDWATER IN CONTACT WITH IMPACTED SOIL?			
							LNAPL OR SHEEN OBSERVED ON GW?			
GROUNDWATER SAMPLING							Date	BBLs		
Date/Time	Groundwater Sample ID	Depth Collected	Turbid?	Sheen?	Odor?	Photo?				
							Total Removed	0		
							Disposal Facility:			

Chevron Rockies Business Unit

Field Qualitative Criteria for ECMC Reporting Associated with the Discovery of Potentially Impacted Material

If answered **Yes** to any of the questions listed below, this may suggest the presence of potentially impacted materials as outlined in ECMC Rule 912. Out of an abundance of caution, a “Yes” response will be reported to the ECMC within 24 hours after discovery, regardless of laboratory results. **Immediately notify the RBU Remediation Team.** Include a copy of this Field Qualitative Spill Criteria Checklist in the field Report.

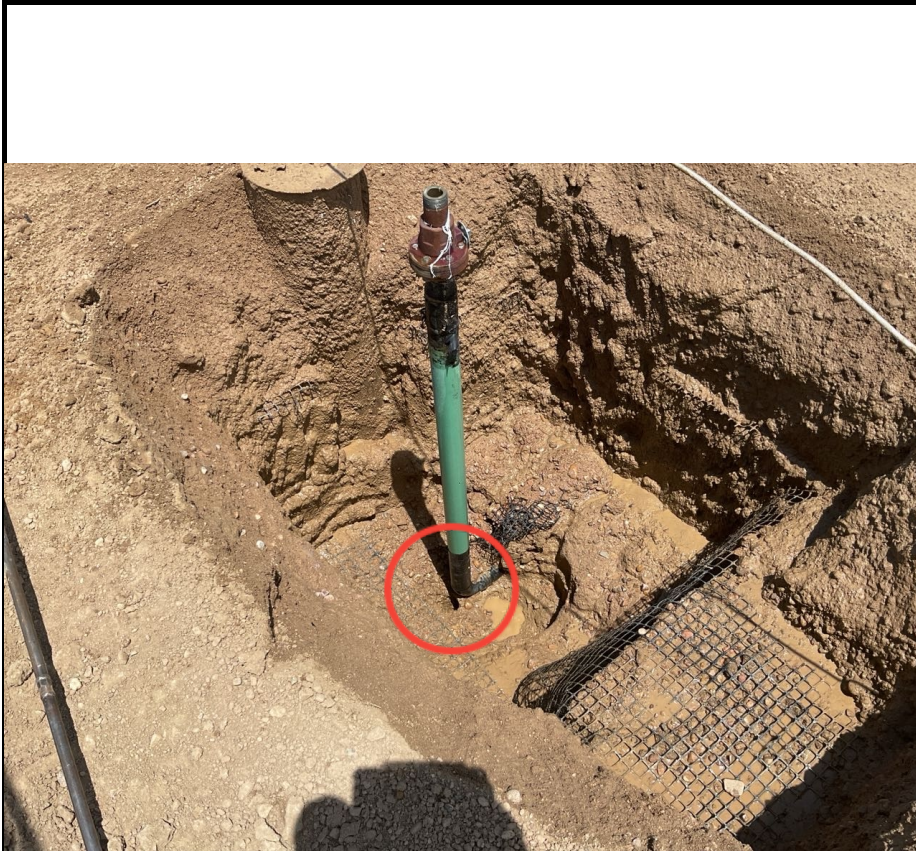
Please answer the following questions when on-site:

1. Is there visible petroleum hydrocarbon staining in the soil? No_____
2. Does the soil sample from the stained area have a petroleum odor? No_____
3. Is there a petroleum hydrocarbon sheen on the nearby surface water? No_____
4. Does there appear to be a sheen of the surface of accumulated groundwater or seeps within the excavation indicative of petroleum? No_____
5. Is stained soil in contact with groundwater? No_____

Please Include relevant photos of the site conditions for items 1-5.

Location name: Goetzel 32C-30-M

Please Circle Facility Type: Flowline



Equipment ID: FL01R-W@7'		Equipment Type:	
Material:	Volume:	Contents:	
Notes/Conditions: COLLECTED VIA HAND AUGER			

Equipment ID: BKG01		Equipment Type:	
Material:	Volume:	Contents:	
Notes/Conditions: BKG01@2', BKG01@3', BKG01@4'			



Equipment ID: FL01R-S@6'		Equipment Type:		Equipment ID:		Equipment Type:	
Material:	Volume:	Contents:		Material:	Volume:	Contents:	
Notes/Conditions: wet due to Hydrovac				Notes/Conditions:			