

Edens 11,12,18-52 Tank Battery

Legend

Site Location

N

0 2,000 4,000 Feet

1 inch = 2,000 feet
1:24,000

Service Layer Credits: Sources: Esri, HERE, Garmin, Intermap, increment P Corp., GEBCO, USGS, FAO, NPS, NRCAN, GeoBase, IGN, Kadaster NL, Ordnance Survey, Esri Japan, METI, Esri China (Hong Kong), (c) OpenStreetMap contributors, and the GIS User Community

USGS The National Map: National Boundaries Dataset, 3DEP Elevation Program, Geographic Names Information System, National Hydrography Dataset, National Land Cover Database, National Structures Dataset, and National Transportation Dataset; USGS Global Ecosystems; U.S. Census Bureau TIGER/Line data; USFS Road data; Natural Earth Data; U.S. Department of State HIU; NOAA National

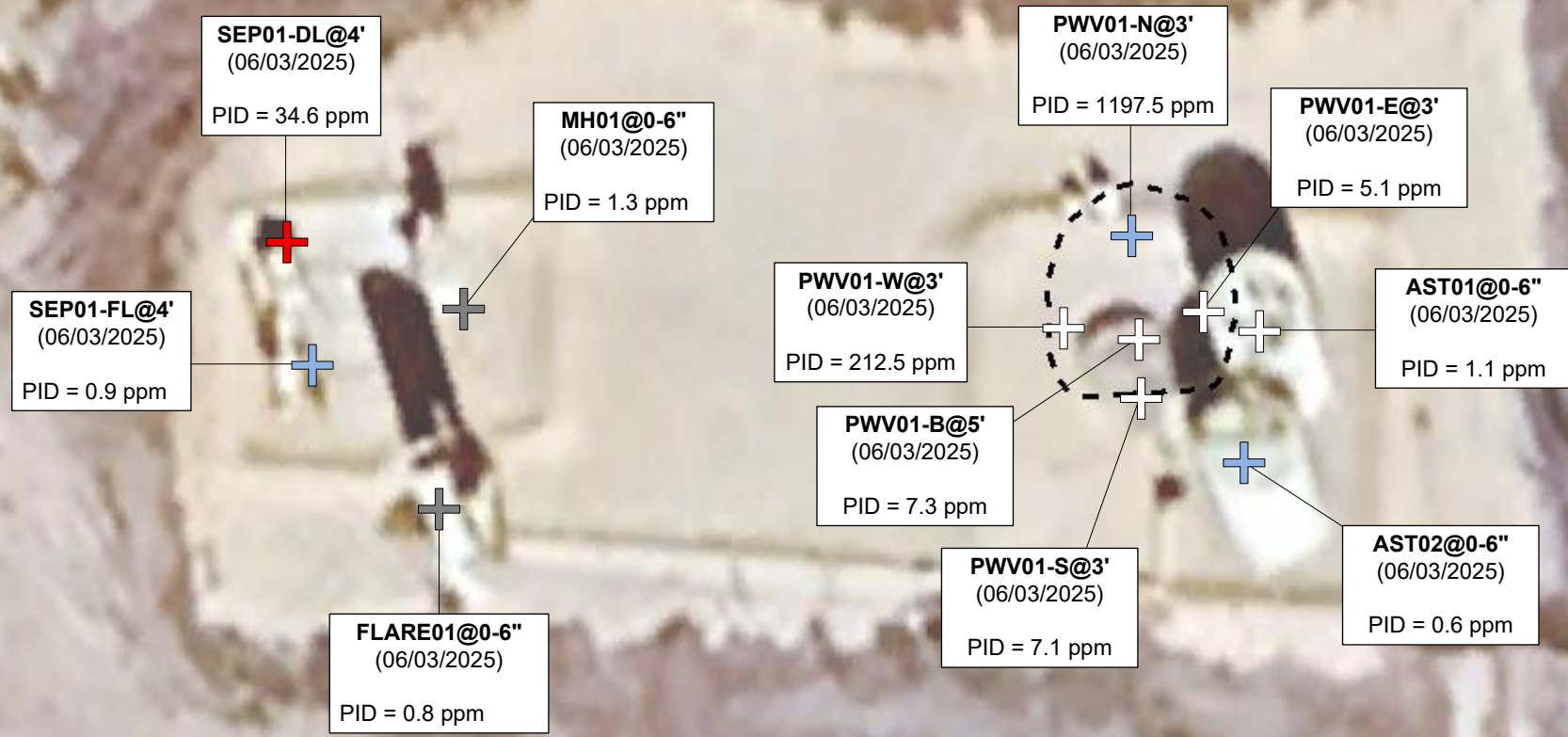
DATE:	June 2025
DESIGNED BY:	B. Nelson
DRAWN BY:	L. Reed

Tasman, Inc.
4725 Independence St.
Wheat Ridge, CO 80033

PDC Energy, Inc. – 69175 – DJ Basin
Edens 11,12,18-52 Tank Battery
 NWNW, Section 18, Township 6 South, Range 63 West
 Weld County, Colorado

Site Location Map

Figure
1



Legend

- Soil Sample Location – Field Screen (Collected via Trimble GPS)
- Soil Sample Location – Lab Analyzed (Collected via Trimble GPS)
- Excavation Extent (Collected via Trimble GPS)
- Soil Sample Location – GSSL Exceedance (Collected via Trimble GPS)
- Soil Sample Location – RSSL Exceedance (Collected via Trimble GPS)

Notes

- 1) All locations are approximate unless otherwise noted.
- 2) Buried infrastructure has been spatially projected.
- 3) Color coded sample exceedances are in reference to ECMC Table 915-1 Organic Compounds in Soil.

GPS – Global Positioning System
 PID – Photoionization Detector
 ppm – Parts per million
 GSSL – Protection of Groundwater Soil Screening Levels
 RSSLs – Residential Soil Screening Levels

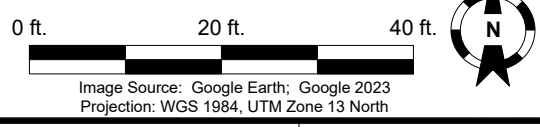


Image Source: Google Earth; Google 2023
 Projection: WGS 1984, UTM Zone 13 North

DATE:	June 17, 2025
DESIGNED BY:	J. Whritenour
DRAWN BY:	J. Clonts



Tasman, Inc.
 4725 Independence Street
 Wheat Ridge, CO 80033

PDC Energy, Inc. – 69175 – DJ Basin
Edens 11, 12, 18-52 Tank Battery
 NWNW, Section 18, Township 6 North, Range 63 West
 Weld County, Colorado

**SOIL SAMPLE
 LOCATION MAP
 (TANK BATTERY)**

**FIGURE
 2**



Legend

- Proposed Soil Boring Locations
- Excavation Extent (Collected via Trimble GPS)
- Soil Sample Location – GSSL Exceedance (Collected via Trimble GPS)
- Soil Sample Location – RSSL Exceedance (Collected via Trimble GPS)

Notes


- 1) All locations are approximate unless otherwise noted.
- 2) Buried infrastructure has been spatially projected.
- 3) Color coded sample exceedances are in reference to ECMC Table 915-1 Organic Compounds in Soil.

GPS – Global Positioning System
 PID – Photoionization Detector
 ppm – Parts per million
 GSSL – Protection of Groundwater Soil Screening Levels
 RSSLs – Residential Soil Screening Levels

0 ft. 20 ft. 40 ft.

Image Source: Google Earth; Google 2023
 Projection: WGS 1984, UTM Zone 13 North

DATE:	June 17, 2025
DESIGNED BY:	J. Whritenour
DRAWN BY:	J. Clonts



Tasman, Inc.
 4725 Independence Street
 Wheat Ridge, CO 80033

PDC Energy, Inc. – 69175 – DJ Basin
Edens 11, 12, 18-52 Tank Battery
 NWNW, Section 18, Township 6 North, Range 63 West
 Weld County, Colorado

**PROPOSED SOIL BORING
 LOCATION MAP**

**FIGURE
 3**

TABLE 1
FIELD DATA SUMMARY TABLE
PDC ENERGY, INC - 69175
EDENS 11, 12, 18-52 TANK BATTERY, WELD COUNTY, COLORADO
REM #39369

Sample ID	Sample Date	Depth (ft. bgs)	GPS Data Latitude/Longitude		PDOP Value	VOC Concentration (ppm)
AST01@0-6"	6/3/2025	0 - 0.5	40.493345	-104.486710	0.8	1.1
AST02@0-6"	6/3/2025	0 - 0.5	40.493385	-104.486703	0.7	0.6
PWV01-B@5'	6/3/2025	5	40.493382	-104.486750	0.8	7.3
PWV01-N@3'	6/3/2025	3	40.493413	-104.486753	0.8	1197.5
PWV01-E@3'	6/3/2025	3	40.493390	-104.486724	0.8	5.1
PWV01-S@3'	6/3/2025	3	40.493362	-104.486749	0.7	7.1
PWV01-W@3'	6/3/2025	3	40.493385	-104.486779	0.7	212.5
SEP01-FL@4'	6/3/2025	4	40.493376	-104.487078	1.0	0.9
SEP01-DL@4'	6/3/2025	4	40.493413	-104.487087	1.0	34.6
MH01@0-6"	6/3/2025	0 - 0.5	40.493392	-104.487017	0.9	1.3
FLARE01@0-6"	6/3/2025	0 - 0.5	40.493331	-104.487030	1.0	0.8

Notes:

1. Global Positioning System (GPS) data is provided in decimal degrees using North American Datum (NAD) 83 UTM Zone 13 North.

2. Volatile organic compound (VOC) concentrations are measured in the field using a photoionization detector (PID).

PDOP = Position Dilution of Precision

ppm = Parts per million

ft. = Feet

bgs = Below ground surface

Source material characterization sample, excavated and transported off site for disposal.

Material excavated and transported off site for disposal.

TABLE 2
SUMMARY OF VOLATILE ORGANIC SOIL CHEMISTRY DATA
PDC ENERGY, INC - 69175
EDENS 11, 12, 18-52 TANK BATTERY, WELD COUNTY, COLORADO
REM #39369

Sample ID	Sample Date	Depth (ft. bgs)	Benzene (mg/kg)	Toluene (mg/kg)	Ethyl-Benzene (mg/kg)	Xylenes (mg/kg)	1,2,4-Trimethyl-Benzene (mg/kg)	1,3,5-Trimethyl-Benzene (mg/kg)	Naphthalene (mg/kg)	TPH (mg/kg)	TPH GRO (mg/kg)	TPH DRO (mg/kg)	TPH ORO (mg/kg)
ECMC Table 915-1 Limits (Residential SSL)			1.2	490	5.8	58	30	27	2	500	500**		
ECMC Table 915-1 Limits (Protection of Groundwater SSL)			0.0026	0.69	0.78	9.9	0.0081	0.0087	0.0038	500	500**		
AST01@0-6"	6/3/2025	0 - 0.5	<0.0020	<0.0050	<0.0050	<0.010	<0.0050	<0.0050	<0.0038	<50	<0.50	<50	<50
AST02@0-6"	6/3/2025	0 - 0.5	<0.0020	0.0071	<0.0050	0.030	0.025	0.0075	0.012	<50	<0.50	<50	<50
PWV01-B@5'	6/3/2025	5	<0.0020	<0.0050	<0.0050	<0.010	<0.0050	<0.0050	<0.0038	<50	<0.50	<50	<50
PWV01-N@3'	6/3/2025	3	0.045	0.44	0.16	1.2	2.9	0.18	0.065	1,097	27	910	160
PWV01-W@3'	6/3/2025	3	<0.0020	<0.0050	<0.0050	<0.010	<0.0050	<0.0050	<0.0038	<50	<0.50	<50	<50
SEP01-FL@4'	6/3/2025	4	0.0032	<0.0050	<0.0050	<0.010	<0.0050	<0.0050	<0.0038	<50	<0.50	<50	<50
SEP01-DL@4'	6/3/2025	4	<0.0020	<0.0050	<0.0050	<0.010	<0.0050	<0.0050	<0.0038	1,000	<0.50	570	430

1. Bold values exceed the ECMC Table 915-1 limit(s)
2. Red & blue highlighted soil analytical values indicate an exceedance of the referenced soil screening level (SSL)
3. ** Summation of GRO+DRO+ORO must be less than 500 mg/kg

(<) = Analytical result is less than the indicated laboratory reporting limit.

TPH-GRO = Total petroleum hydrocarbons - gasoline range organics

TPH-DRO = Total petroleum hydrocarbons - diesel range organics

TPH-ORO = Total petroleum hydrocarbons - oil range organics

mg/kg = Milligrams per kilogram

ft. = Feet

bgs = Below ground surface

NA - Not analyzed

Source material characterization sample, excavated and transported off site for disposal.

Material excavated and transported off site for disposal.

TABLE 3
SUMMARY OF POLYCYCLIC AROMATIC HYDROCARBON SOIL CHEMISTRY DATA
PDC ENERGY, INC - 69175
EDENS 11, 12, 18-52 TANK BATTERY, WELD COUNTY, COLORADO
REM #39369

Sample ID	Sample Date	Depth (ft. bgs)	Acenaphthene (mg/kg)	Anthracene (mg/kg)	Benzo (a) Anthracene (mg/kg)	Benzo (a) Pyrene (mg/kg)	Benzo (b) Fluoranthene (mg/kg)	Benzo (k) Fluoranthene (mg/kg)	Chrysene (mg/kg)	Dibenzo (a,h) Anthracene (mg/kg)	Fluoranthene (mg/kg)	Fluorene (mg/kg)	Indeno (1,2,3-cd) Pyrene (mg/kg)	Pyrene (mg/kg)	1-Methyl - Naphthalene (mg/kg)	2-Methyl- Naphthalene (mg/kg)
ECMC Table 915-1 Limits (Residential SSL)			360	1800	1.1	0.11	1.1	11	110	0.11	240	240	1.1	180	18	24
ECMC Table 915-1 Limits (Protection of Groundwater SSL)			0.55	5.8	0.011	0.24	0.3	2.9	9	0.096	8.9	0.54	0.98	1.3	0.006	0.019
AST01@0-6"	6/3/2025	0 - 0.5	<0.00500	<0.00500	<0.00500	<0.00500	<0.00500	<0.00500	<0.00500	<0.00500	<0.00500	<0.00500	<0.00500	<0.00500	<0.00500	<0.00500
AST02@0-6"	6/3/2025	0 - 0.5	<0.00500	<0.00500	<0.00500	<0.00500	<0.00500	<0.00500	<0.00500	<0.00500	<0.00500	0.0127	<0.00500	<0.00500	0.0216	0.0312
PWV01-B@5'	6/3/2025	5	<0.00500	<0.00500	<0.00500	<0.00500	<0.00500	<0.00500	<0.00500	<0.00500	<0.00500	<0.00500	<0.00500	<0.00500	<0.00500	<0.00500
PWV01-N@3'	6/3/2025	3	<0.00500	<0.00500	0.0150	<0.00500	0.00643	<0.00500	0.0134	<0.00500	0.0179	0.0203	<0.00500	0.0192	0.149	0.251
PWV01-W@3'	6/3/2025	3	<0.00500	<0.00500	<0.00500	<0.00500	<0.00500	<0.00500	<0.00500	<0.00500	<0.00500	<0.00500	<0.00500	<0.00500	<0.00500	<0.00500
SEP01-FL@4'	6/3/2025	4	<0.00500	<0.00500	<0.00500	<0.00500	<0.00500	<0.00500	<0.00500	<0.00500	<0.00500	<0.00500	<0.00500	<0.00500	<0.00500	<0.00500
SEP01-DL@4'	6/3/2025	4	<0.00500	<0.00500	<0.00500	<0.00500	<0.00500	<0.00500	<0.00500	<0.00500	<0.00500	<0.00500	<0.00500	<0.00500	<0.00500	<0.00500

1. Bold values exceed the ECMC Table 915-1 limit(s)
2. Red & blue highlighted soil analytical values indicate an exceedance of the referenced soil screening level (SSL)

(<) = Analytical result is less than the indicated laboratory reporting limit.

mg/kg = Milligrams per kilogram

ft. = Feet

bgs = Below ground surface

NA - Not analyzed

Source material characterization sample, excavated and transported off site for disposal.

Material excavated and transported off site for disposal.

TABLE 4
SUMMARY OF SOIL SUITABILITY FOR RECLAMATION
PDC ENERGY, INC - 69175
EDENS 11, 12, 18-52 TANK BATTERY, WELD COUNTY, COLORADO
REM #39369

Sample ID	Sample Date	Depth (ft. bgs)	pH (Standard Units)	EC (mmhos/cm)	SAR (Standard Units)	Boron (mg/L)
ECMC Table 915-1 Soil Suitability Limits			6 - 8.3	<4	<6	2
AST01@0-6"	6/3/2025	0 - 0.5	8.88	0.122	0.102	<2.00
AST02@0-6"	6/3/2025	0 - 0.5	8.93	0.261	0.167	<2.00
PWV01-B@5'	6/3/2025	5	7.97	2.67	27.0	<2.00
PWV01-N@3'	6/3/2025	3	8.47	0.261	0.388	<2.00
PWV01-W@3'	6/3/2025	3	8.27	0.606	0.0724	<2.00
SEP01-FL@4'	6/3/2025	4	8.65	0.465	0.865	<2.00
SEP01-DL@4'	6/3/2025	4	8.53	0.667	1.48	<2.00
Maximum Background Concentration			NA	NA	NA	NA

1. **Bold** faced values exceed the ECMC Table 915-1 limit(s), but are within background concentrations.

2. **Bold** faced values exceed the ECMC Table 915-1 limit(s) and native background concentrations.

3. Brown highlighted soil analytical values indicate a regulatory exceedance.

mg/L = Milligrams per liter

ft. = Feet

bgs = Below ground surface

mmhos/cm = Millimohs per centimeter

NA - Not analyzed

Source material characterization sample, excavated and transported off site for disposal.

Material excavated and transported off site for disposal.

TABLE 5
SUMMARY OF METALS IN SOIL CHEMISTRY DATA
PDC ENERGY, INC - 69175
EDENS 11, 12, 18-52 TANK BATTERY, WELD COUNTY, COLORADO
REM #39369

Sample ID	Sample Date	Depth (ft. bgs)	Arsenic (mg/kg)	Barium (mg/kg)	Cadmium (mg/kg)	Chromium (VI) (mg/kg)	Copper (mg/kg)	Lead (mg/kg)	Nickel (mg/kg)	Selenium (mg/kg)	Silver (mg/kg)	Zinc (mg/kg)
ECMC Table 915-1 Limits (Residential SSL)			0.68	15000	71	0.3	3100	400	1500	390	390	23000
ECMC Table 915-1 Limits (Protection of Groundwater SSL)			0.29	82	0.38	0.00067	46	14	26	0.26	0.8	370
AST01@0-6"	6/3/2025	0 - 0.5	2.58	39.3	<0.200	<0.30	7.63	4.39	3.19	<0.260	<0.0200	14.6
AST02@0-6"	6/3/2025	0 - 0.5	2.71	63.6	<0.200	<0.30	8.06	5.09	4.39	<0.260	<0.0200	19.9
PWV01-B@5'	6/3/2025	5	3.09	60.2	<0.200	<0.30	7.05	6.19	4.65	<0.260	0.0233	22.2
PWV01-N@3'	6/3/2025	3	3.14	69.9	<0.200	<0.30	6.63	6.02	4.66	<0.260	0.0242	20.1
PWV01-W@3'	6/3/2025	3	3.32	65.9	<0.200	<0.30	6.37	6.48	4.48	<0.260	0.0268	20.5
SEP01-FL@4'	6/3/2025	4	3.77	63.4	<0.200	<0.30	8.78	5.77	4.93	<0.260	0.0250	22.2
SEP01-DL@4'	6/3/2025	4	3.46	60.3	<0.200	<0.30	6.51	5.53	5.08	<0.260	0.0271	19.9
1.25x Maximum Background Concentration			NA	NA	NA	NA	NA	NA	NA	NA	NA	NA

- Bold** faced values exceed the ECMC Table 915-1 limit(s), but are within 1.25x background concentrations.
- Red** faced values exceed the ECMC Table 915-1 limit(s) and native background concentrations.
- Red & blue highlighted soil analytical values indicate an exceedance of the referenced soil screening level (SSL).
- Non-detect background results accounted for in the highest background concentration by using the reporting limit.
- * Indicates laboratory minimum detection limit in excess of SSL

ECMC = Energy & Carbon Management Commission

(<) = Analytical result is less than the indicated laboratory reporting limit.

mg/kg = Milligrams per kilogram

ft. = Feet

bgs = Below ground surface

NA - Not analyzed

Source material characterization sample, excavated and transported off site for disposal.

Material excavated and transported off site for disposal.

Chevron Rockies Business Unit

Field Qualitative Criteria for ECMC Reporting Associated with the Discovery of Potentially Impacted Material

If answered **Yes** to any of the questions listed below, this may suggest the presence of potentially impacted materials as outlined in ECMC Rule 912. Out of an abundance of caution, a “Yes” response will be reported to the ECMC within 24 hours after discovery, regardless of laboratory results. **Immediately notify the RBU Remediation Team.** Include a copy of this Field Qualitative Spill Criteria Checklist in the field Report.

Please answer the following questions when on-site:

1. Is there visible petroleum hydrocarbon staining in the soil? Yes_____
2. Does the soil sample from the stained area have a petroleum odor? Yes_____
3. Is there a petroleum hydrocarbon sheen on the nearby surface water? No_____
4. Does there appear to be a sheen of the surface of accumulated groundwater or seeps within the excavation indicative of petroleum? No_____
5. Is stained soil in contact with groundwater? No_____

Please Include relevant photos of the site conditions for items 1-5.

Location name: Edens 11, 12, 18-52 Tank Battery

Please Circle Facility Type: Production Facility



Equipment ID: SEP01-DL@4'		Equipment Type:	
Material:	Volume:	Contents:	
Notes/Conditions:			

Equipment ID: SEP01-FL@4'		Equipment Type:	
Material:	Volume:	Contents:	
Notes/Conditions:			



Equipment ID: MH01@0-6"		Equipment Type:	
Material:	Volume:	Contents:	
Notes/Conditions:			

Equipment ID: FLARE01@0-6"		Equipment Type:	
Material:	Volume:	Contents:	
Notes/Conditions:			

									
						Equipment ID: AST01@0-6" Equipment Type:			Equipment ID: AST02@0-6" Equipment Type:
Material:		Volume:	Contents:		Material:		Volume:	Contents:	
Notes/Conditions:					Notes/Conditions:				



Equipment ID:		Equipment Type:	
Material:	Volume:	Contents:	
Notes/Conditions: PWV01-B@5', PWV01-N@3', PWV01-E@2.5, PWV01-W. Facing south			

Equipment ID:		Equipment Type:	
Material:	Volume:	Contents:	
Notes/Conditions:			



Photographic Log

Equipment ID:		Equipment Type:	Equipment ID:		Equipment Type:
Material:	Volume:	Contents:	Material:	Volume:	Contents:
Notes/Conditions:			Notes/Conditions:		