



**SECTOR CEMENT BOND
GAMMA RAY
CCL LOG**

Comp. OCCIDENTAL PETROLEUM CORP
Well WILDFLOWER 33-27
Field WATTENBERG
Co. WELD
State CO

Company **OCCIDENTAL PETROLEUM CORP**
Well **WILDFLOWER 33-27**
Field **WATTENBERG**
County **WELD** State **CO**

Location: API #: 05-123-32142
SE/SW
PERF

Permanent Datum GL Elevation 5008'
Log Measured From KB 14' Above Perm. Datum
Drilling Measured From KB G.L. 5008'

Date of Service	18-JULY-2025		
Run Number	ONE		
Depth Driller or PBTD	8400'		
Depth Logger	1650'		
Bottom Log Interval	1650'		
Top Log Interval	SURFACE		
Open Hole Size	7-7/8"		
Type Fluid	H2O		
Fluid Level	SURFACE		
Fluid Density	8.33 LB/GALL		
Max. Recorded Temperature	NA		
Wellhead Pressure	ZERO		
Wellhead Connection	5K		
Estimated Cement Top	SURFACE		
Unit Number	L172458		
Wireline Size	1/4"		
Location	BRIGHTON		
Recorded By	C. SHEPPARD		
Witnessed By	J. BISHOP		

Surface Casing	8-5/8"	24#	SURFACE	813'
Production Casing	4-1/2"	11.6#	SURFACE	8389'
Liner Casing				
Tubing Record				

<<< Fold Here >>>

All interpretations are opinions based on inferences from electrical or other measurements and Ranger Energy Services cannot and does not guarantee the accuracy or correctness of any interpretation, and Ranger Energy Services will not be liable or responsible for any loss, costs, damages, or expenses incurred or sustained by anyone resulting from any interpretation made by any of our officers, agents or employees.

Comments

N/A DENOTES NOT AVAILABLE OR NON-APPLICABLE.
LOG CORRELATED TO KB

ZERO PRESSURE APPLIED @ SURFACE

THANK YOU FOR USING RANGER ENERGY SERVICES!!

THANK YOU FOR USING RANGER ENERGY SERVICES!

FIELD TICKET #

Your Ranger Energy Services Crew

Engineer: C. SHEPPARD
Operator: C. BURNETTE
Operator:
Operator:

Tool Data - Services

Serial Number

Quantity	Offset (ft)	Substrate	Description	Length (ft)	O.D. (in)	Weight (lb)
----------	-------------	-----------	-------------	-------------	-----------	-------------

Sensor	Offset (ft)	Schematic	Description	Length (ft)	O.D. (in)	Weight (lb)	
ErrCt	17.33		Cable_Head-1_7/16 Titan 1 7/16" Cable Head	1.02	1.44	3.31	
IntTemp	15.07						
WVFS8	11.82			RBT-Probe (070150) Probe Radii Bond Tool with Digital Telemetry	8.75	2.75	90.00
WVFS7	11.82						
WVFS6	11.82						
WVFS5	11.82						
WVFS4	11.82						
WVFS3	11.82						
WVFS2	11.82						
WVFS1	11.82						
WVFCAL	11.82						
WVF3FT	11.82						
WVF5FT	10.82						
CCL	6.62						
GR	5.38			GR_analog-GR275B (071129) 275 Gamma-CCL (Pulse) Top Detector	4.57	2.75	55.00
			Centralizers-8071-275-200 Tekco 2 3/4" Adjustable Centralizer	2.73	2.75	25.00	
			Bull_Plug-1_7/16_GO Titan 1 7/16" Female Bull Plug	0.27	1.44	1.00	

Dataset: occidental_wildflower33-27_0512332142_2025018_scbl.db: field/well/run1/pass3
 Total length: 17.33 ft
 Total weight: 174.31 lb
 O.D.: 2.75 in

Log Variables

DatabaseC:\ProgramData\Warrior\Data\occidental_wildflower33-27_0512332142_2025018_scbl.db
 Dataset field/well/run1/pass3/_vars_

Top - Bottom

BOREID in 4	BOTTEMP degF 100	CASEOD in 4.5	CASETHCK in 0.25	CASEWGHT lb/ft 11.6	MAXAMPL mV 81.2	MINAMPL mV 0.7	MINATTN db/ft 13
PERFS No	PPT usec 249	SRFTEMP degF 65	TDEPTH ft 1650				

Variable Description

BOREID : Borehole I.D.
 BOTTEMP : Bottom Hole Temperature
 CASEOD : Casing O.D.
 CASETHCK : Casing Thickness

CASEWGHT : Casing Weight
 MAXAMPL : Maximum Amplitude
 MINAMPL : Minimum Amplitude
 MINATTN : Minimum Attenuation

PERFS : Perforation Flag
 PPT : Predicted Pipe Time
 SRFTEMP : Surface Temperature
 TDEPTH : Total Depth

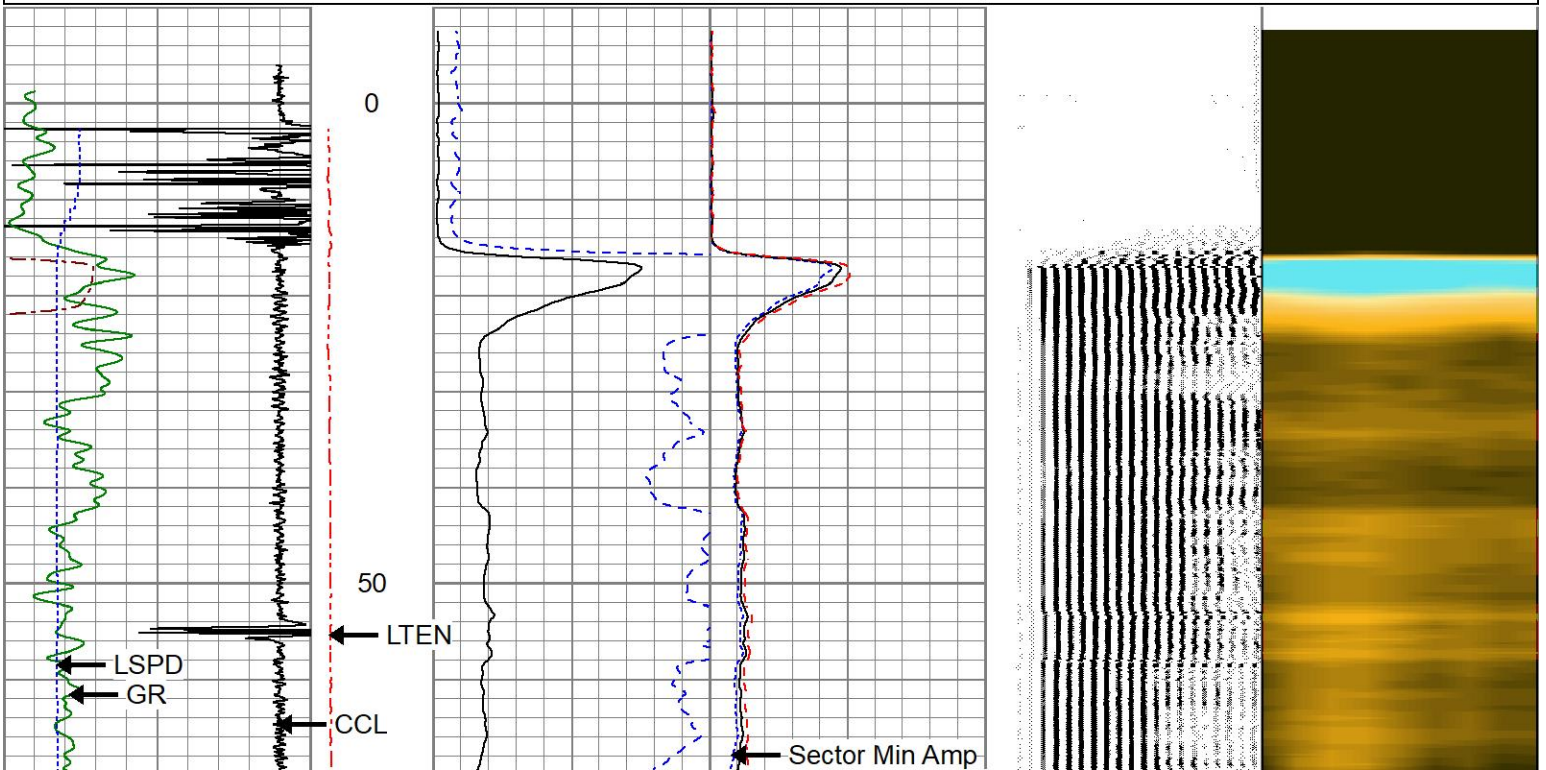


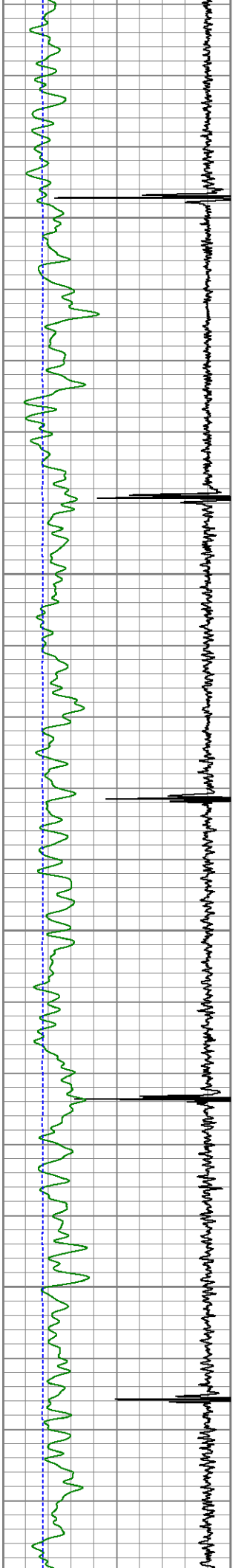
MAIN PASS

0 PSI APPLIED AT SURFACE

Database File: occidental_wildflower33-27_0512332142_2025018_scbl.db
 Dataset Pathname: pass3
 Presentation Format: res_scbl 8sec-gr-ccl
 Dataset Creation: Fri Jul 18 08:51:45 2025
 Charted by: Depth in Feet scaled 1:240

270 3FT TT (usec) 170	LTEN	3' Amplitude	0 Sector Min Amp 150	200 VDL (usec) 1200	1 Sector Map 8
-9 CCL 1	(lb)	(mV) 100	Sector Avg Amp		
0 GR (GAPI) 150	0 2000	3' Amplified Amplitude X 5	0 150		
-150 LSPD (ft/min) 150		(mV) 20	Sector Max Amp		
			0 150		



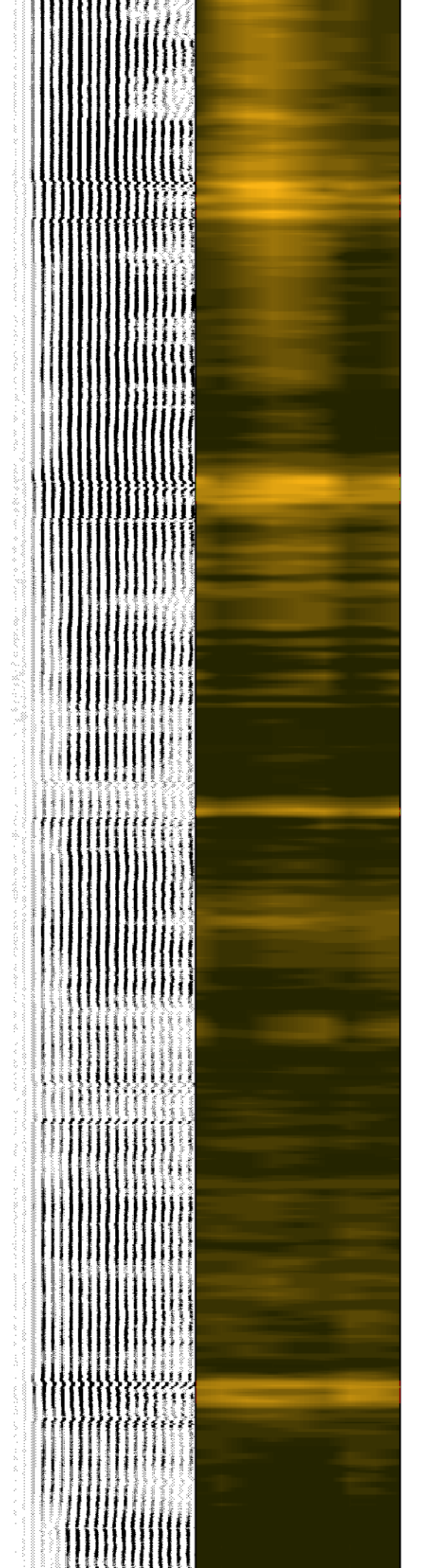
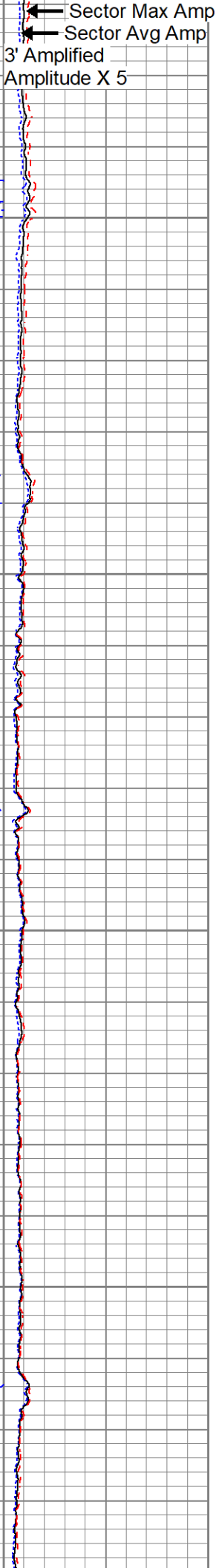
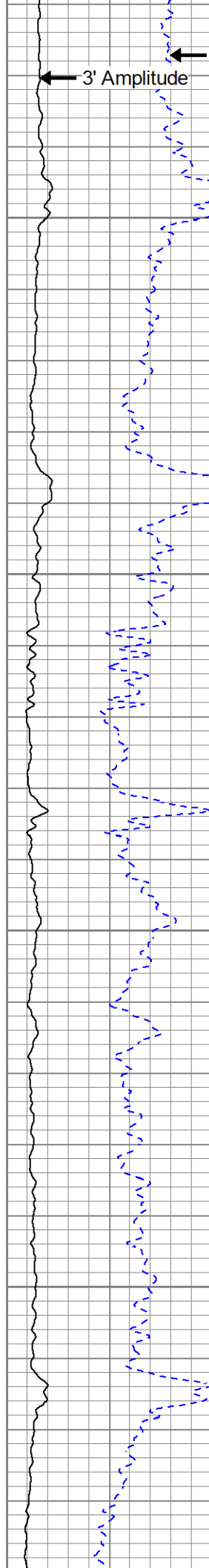


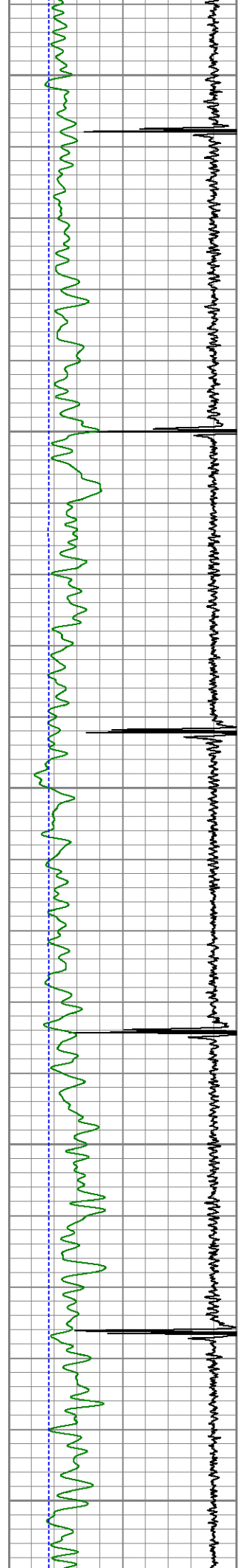
100

150

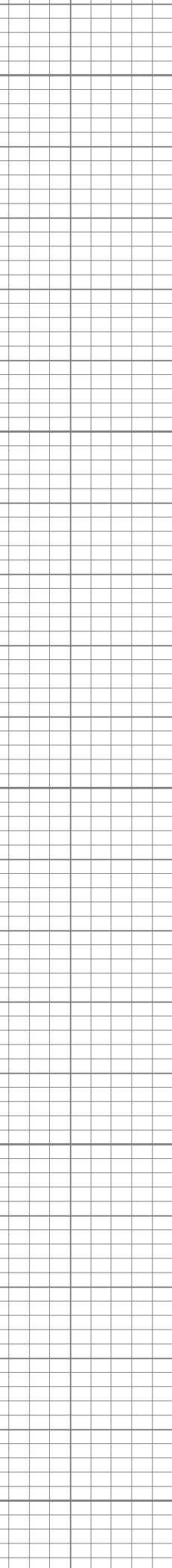
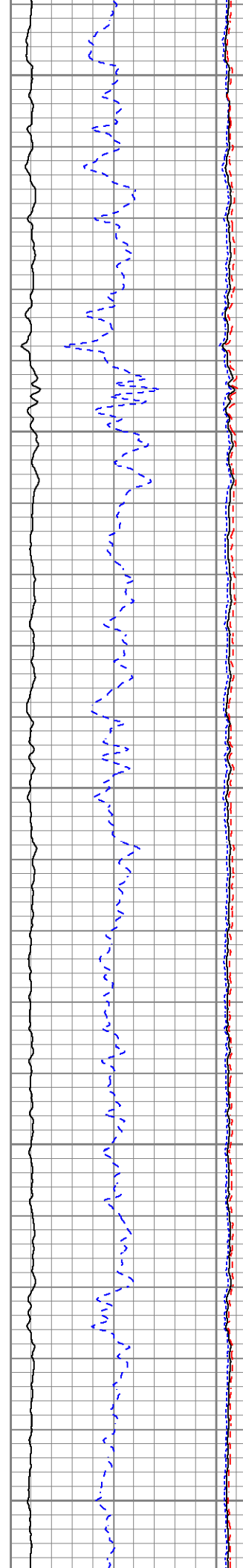
200

250

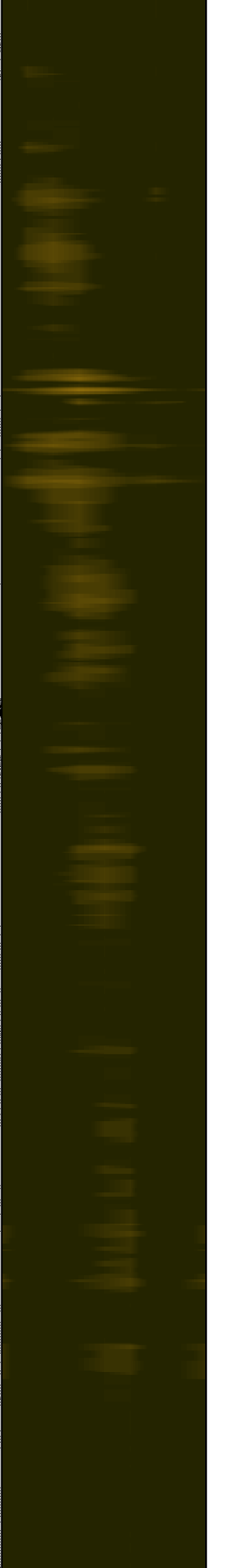


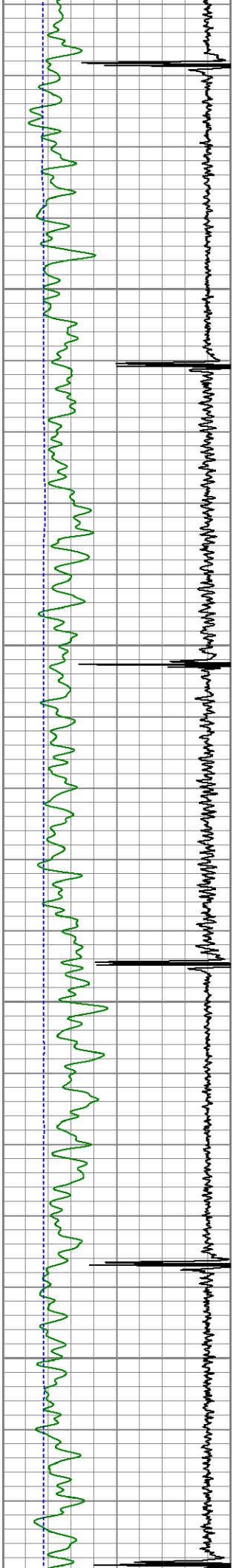


300
350
400
450
500



Vertical text on the right side of the page, likely a log or header, containing technical details and data points.



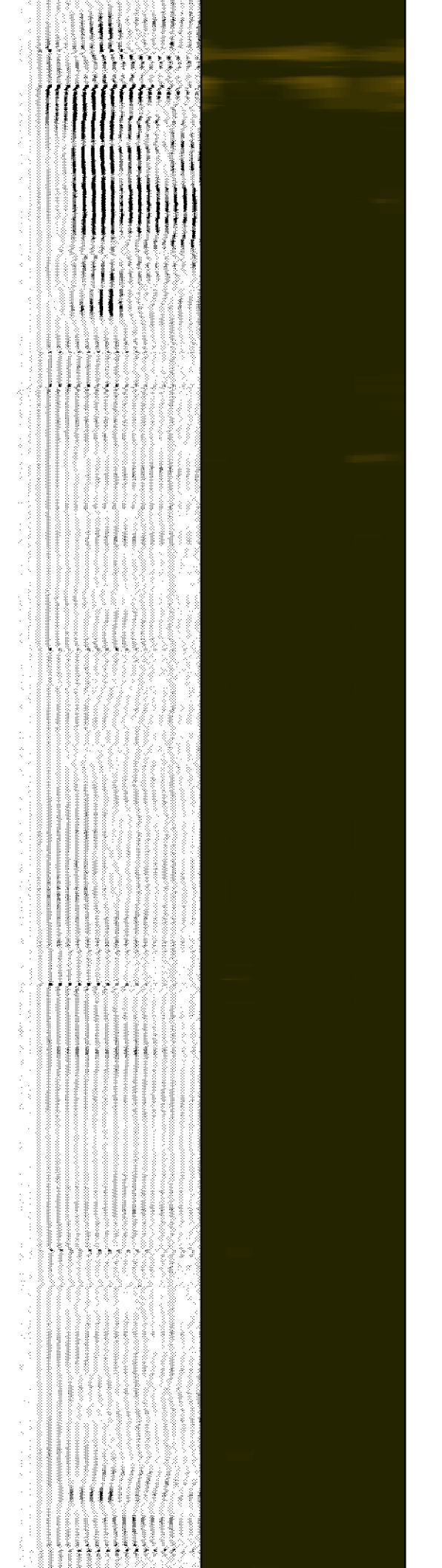
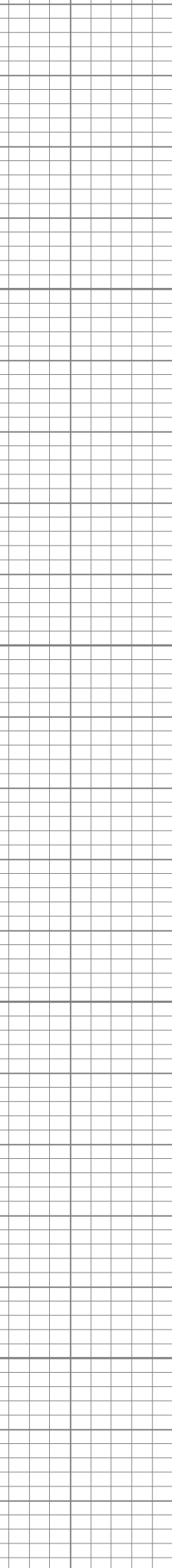
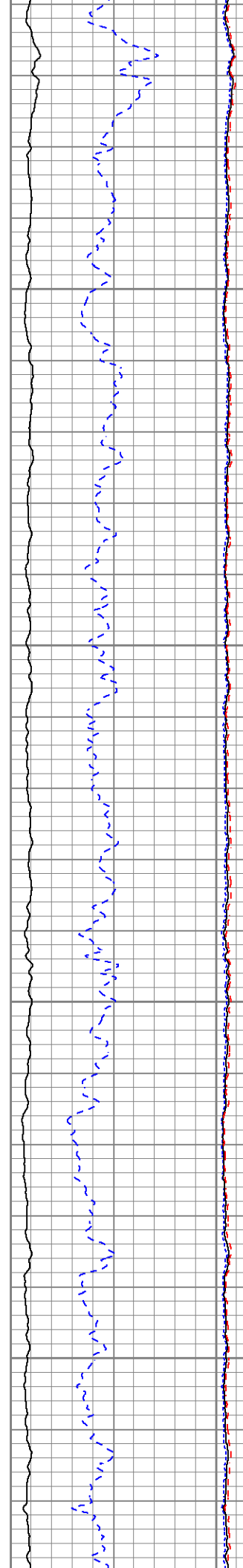


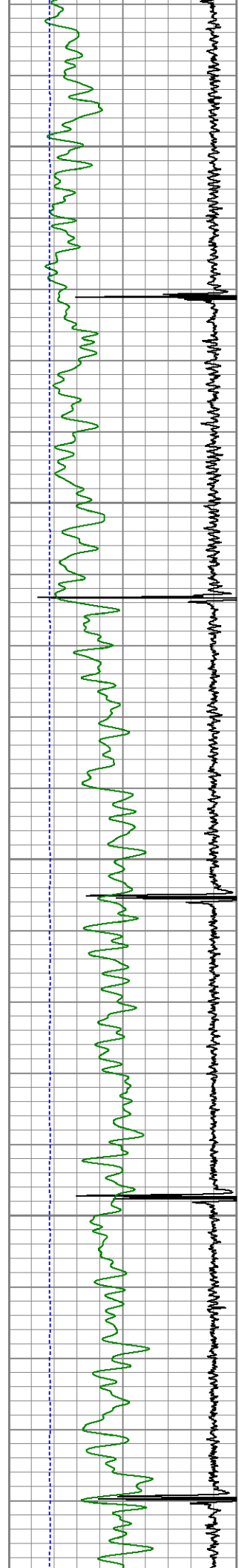
550

600

650

700





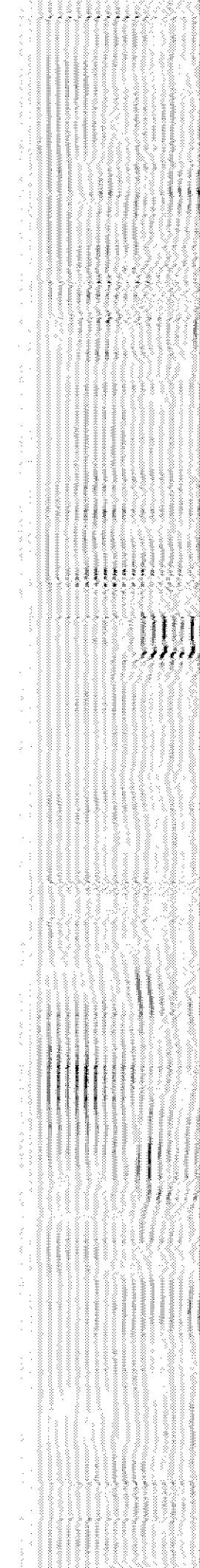
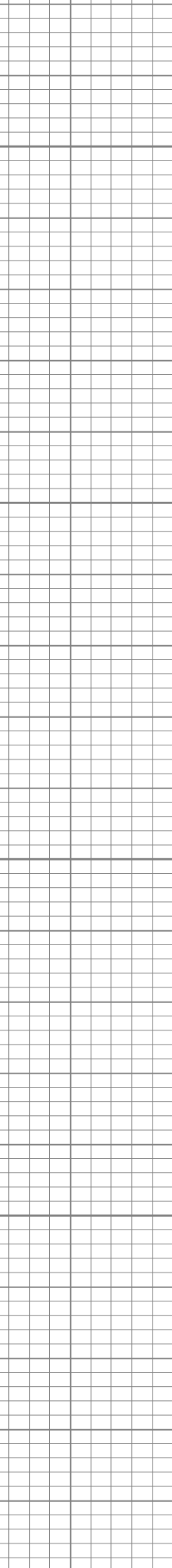
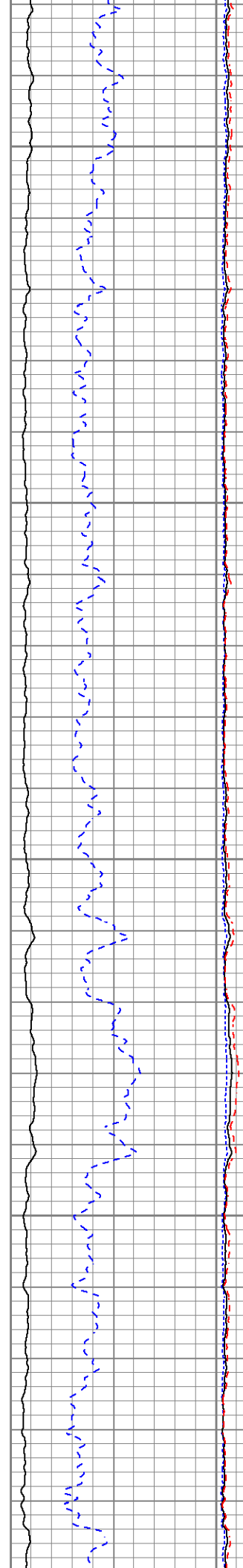
750

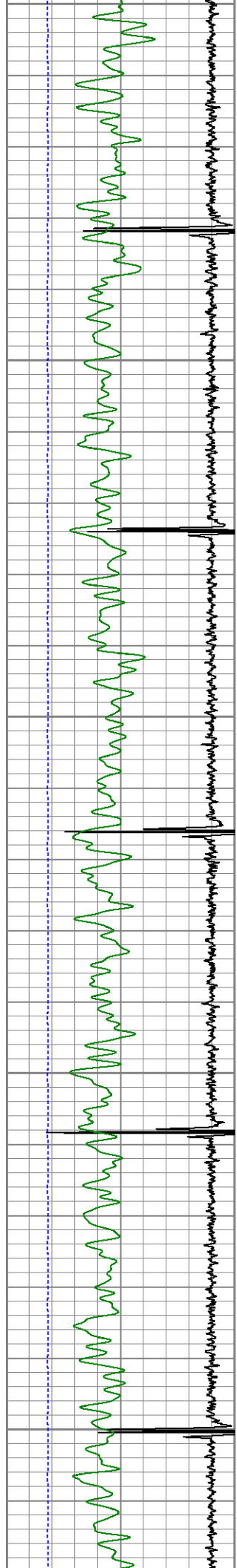
800

850

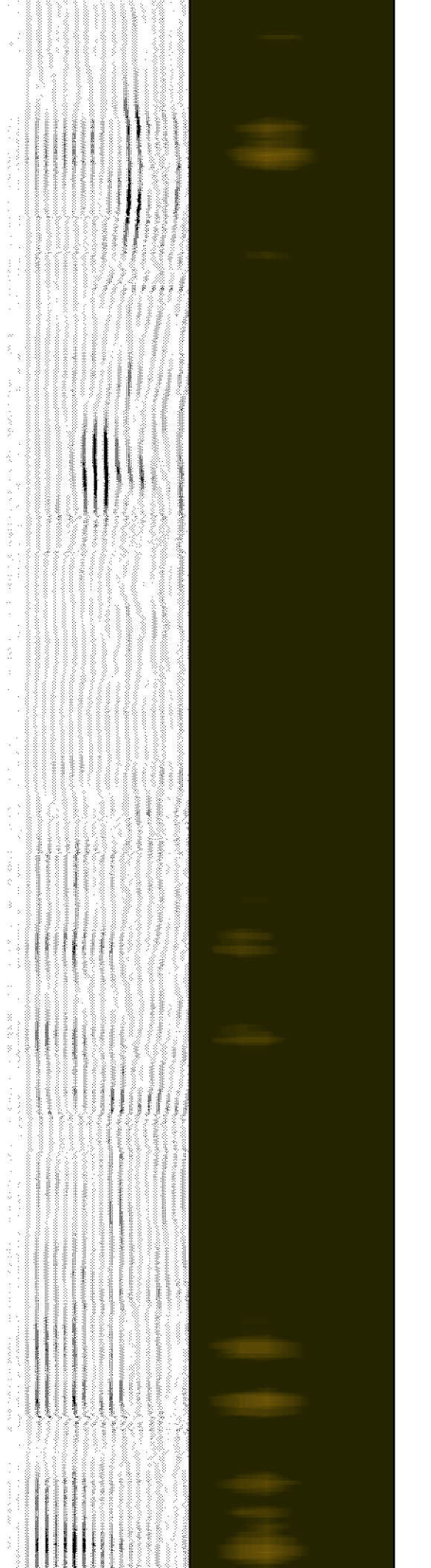
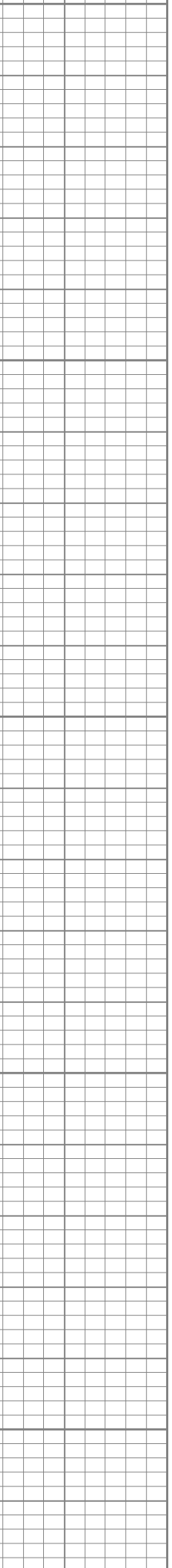
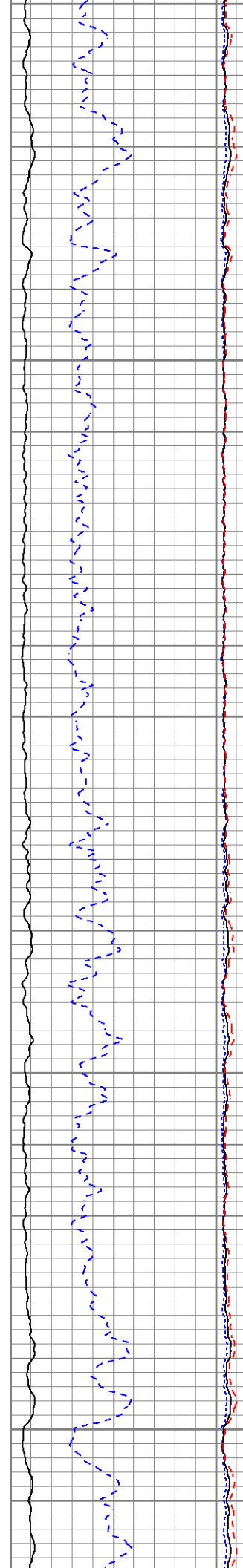
900

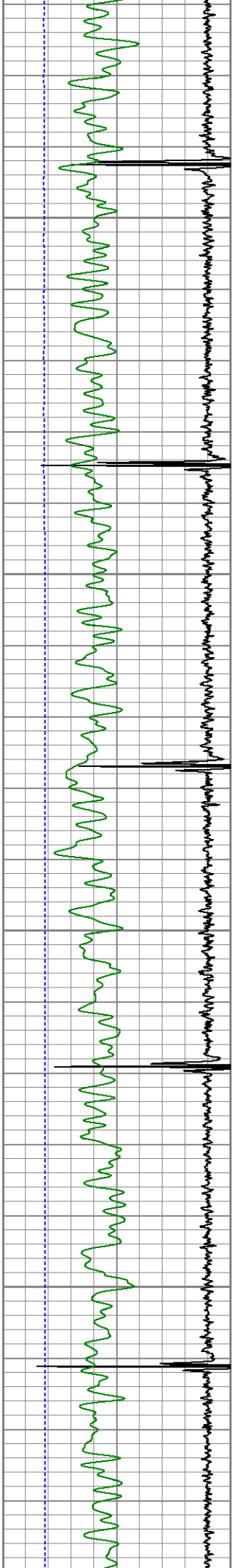
950





950
1000
1050
1100
1150



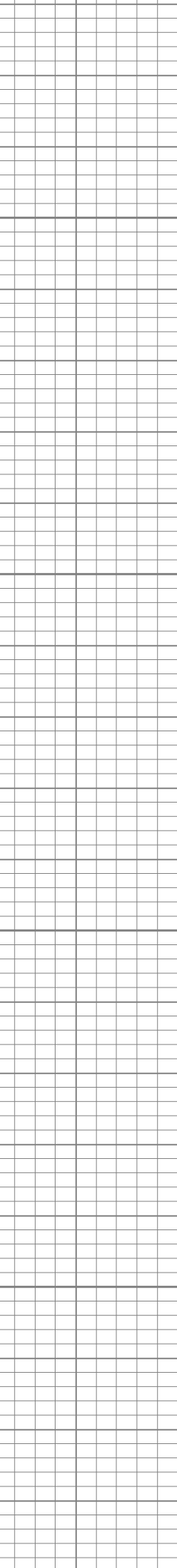
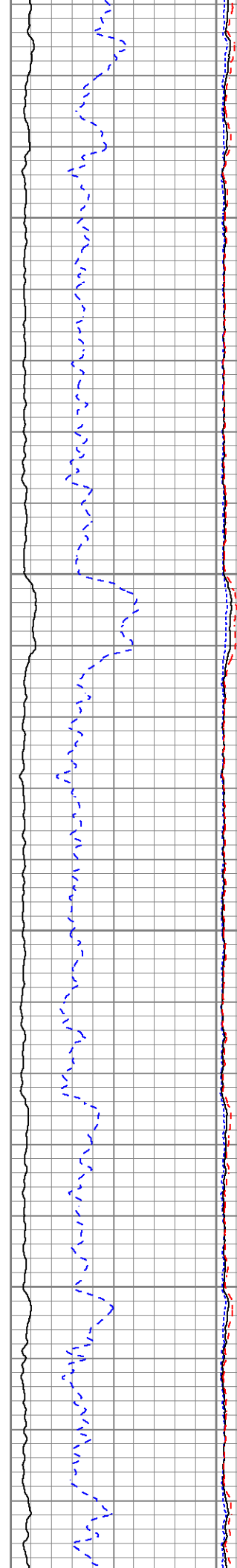


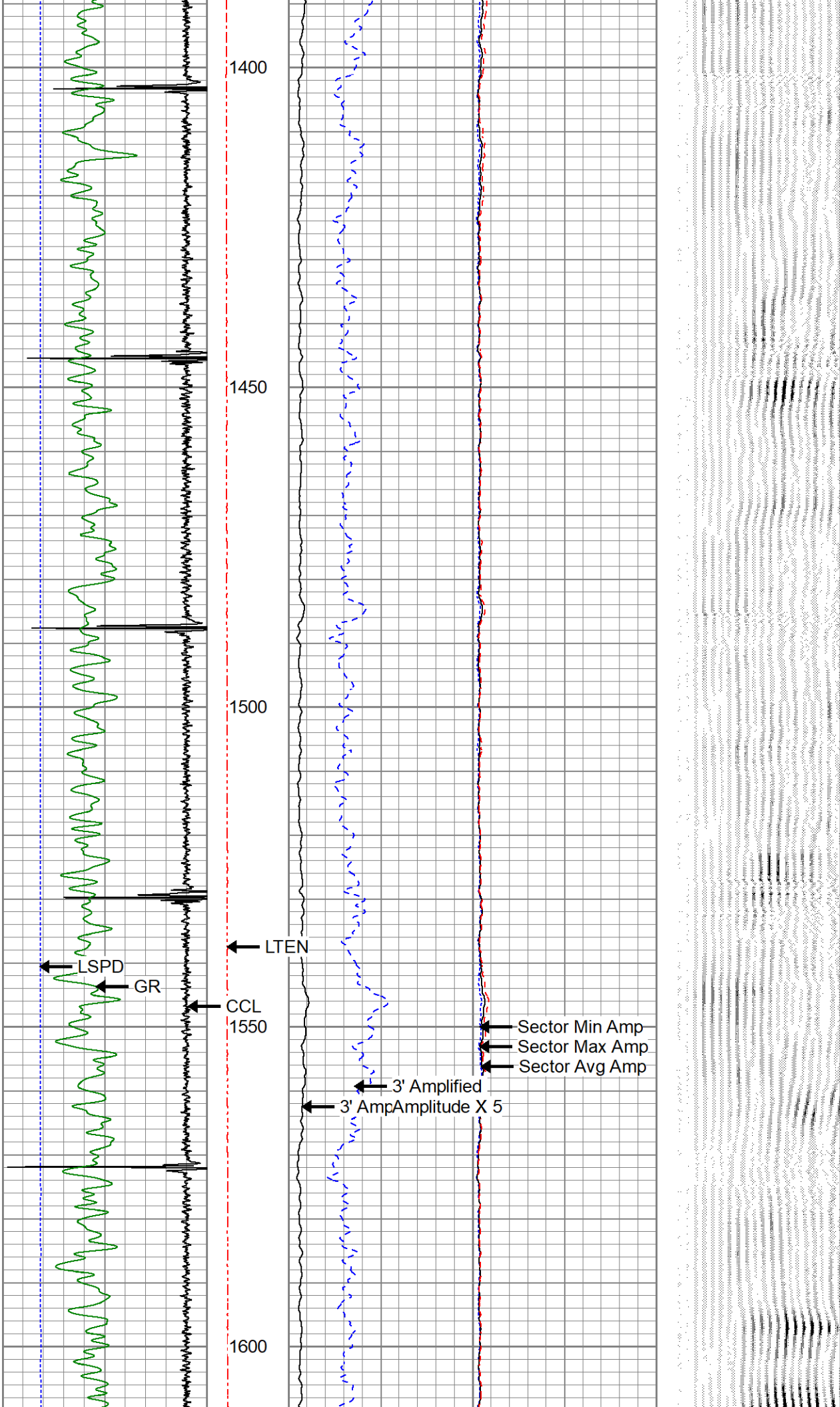
1200

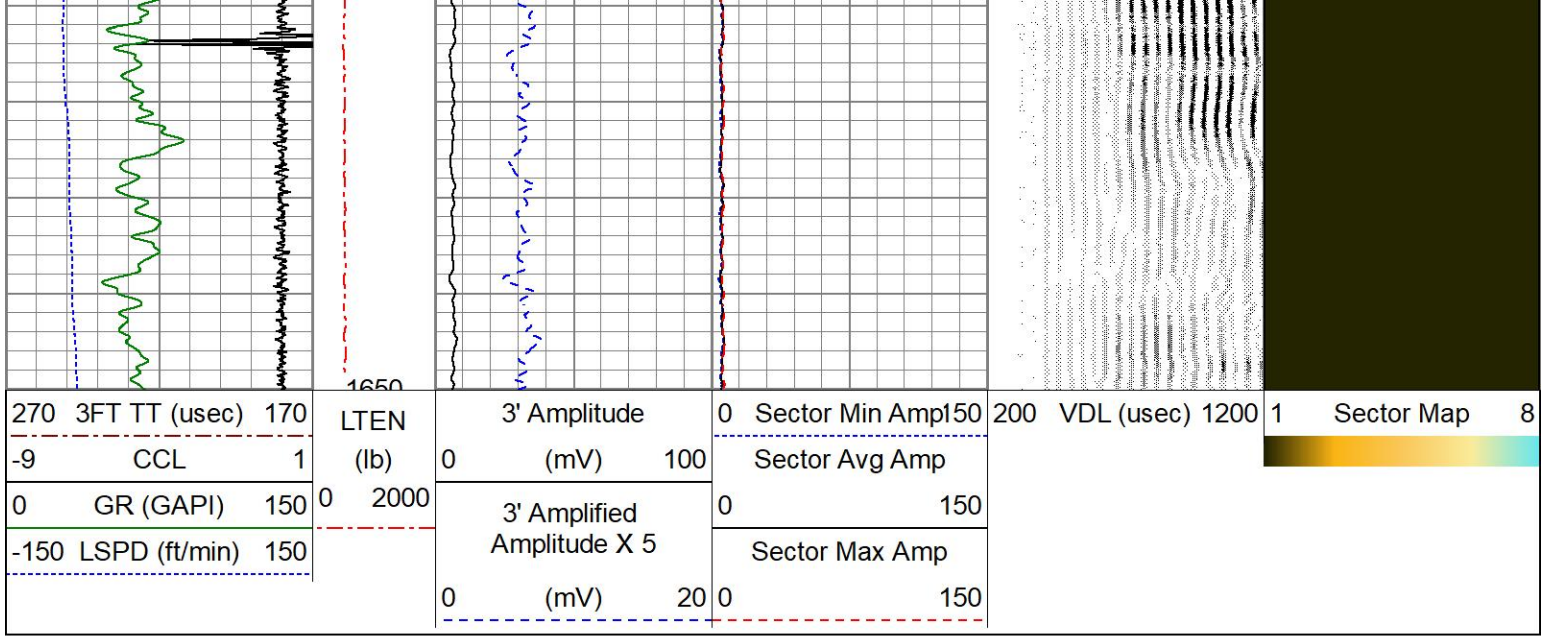
1250

1300

1350



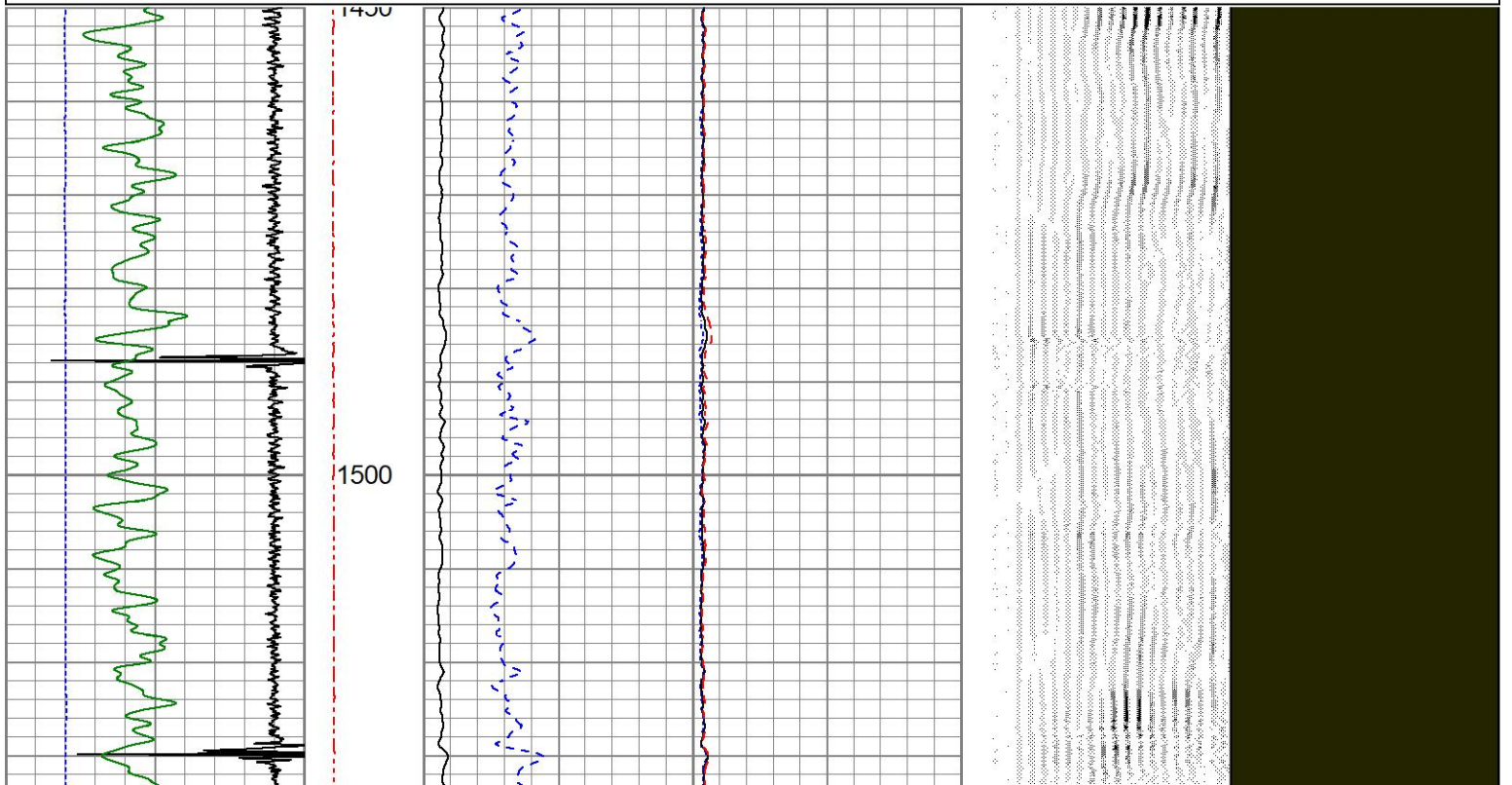
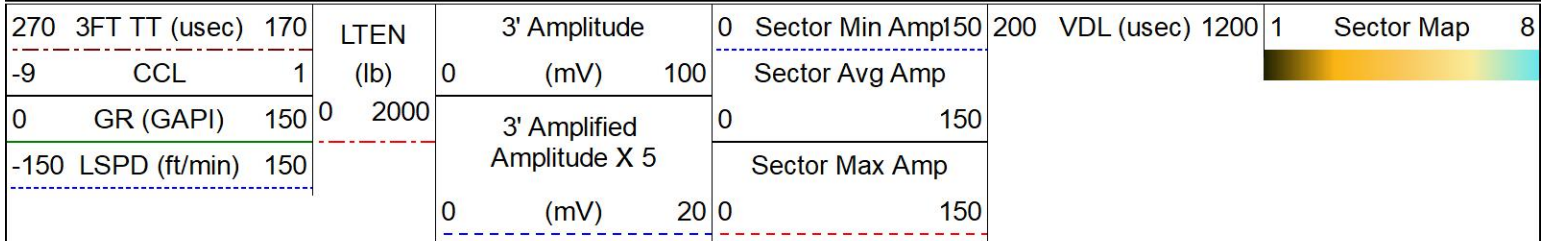


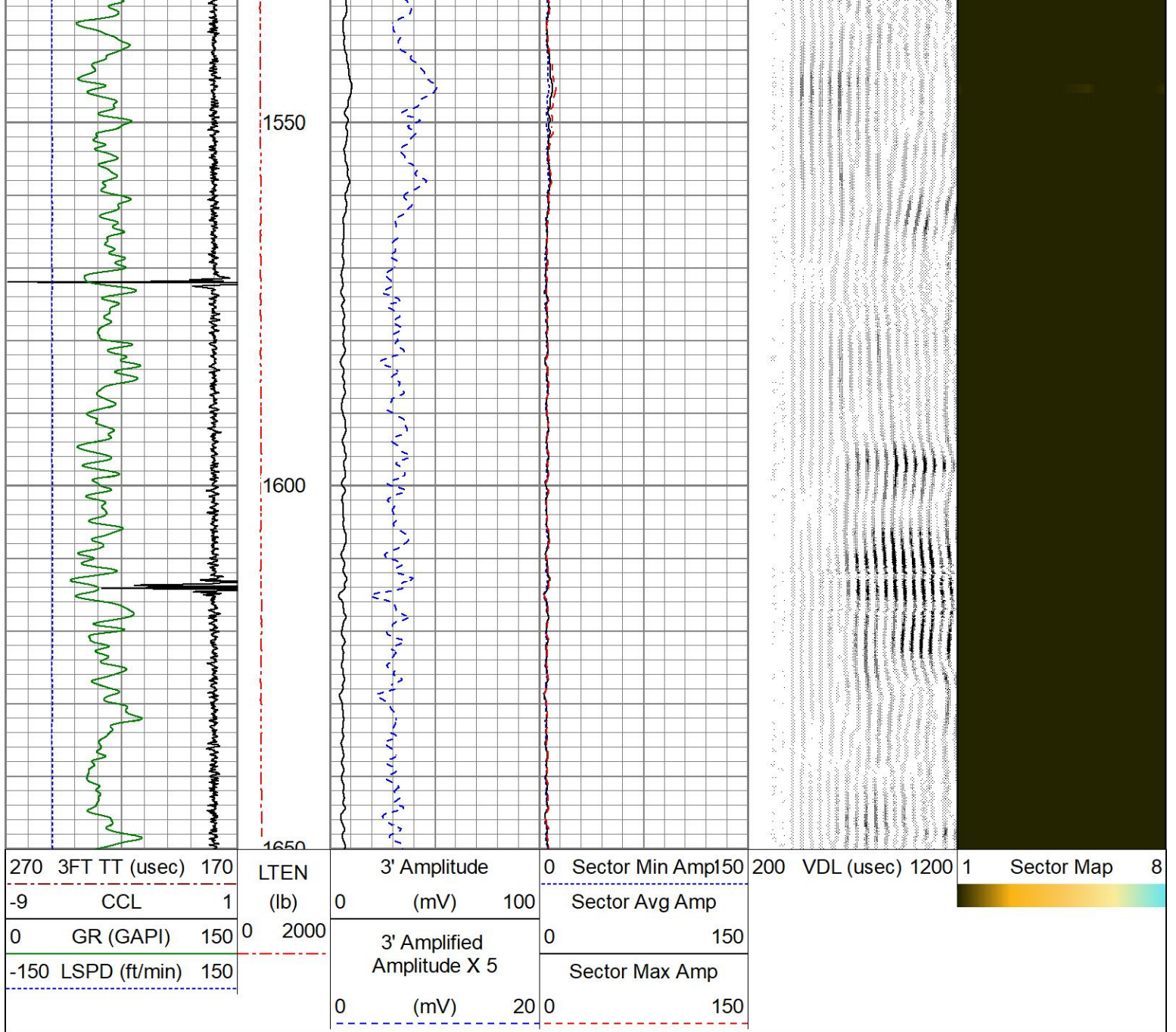


REPEAT PASS

0 PSI APPLIED AT SURFACE

Database File: occidental_wildflower33-27_0512332142_2025018_scbl.db
 Dataset Pathname: pass2
 Presentation Format: res_scbl 8sec-gr-ccl
 Dataset Creation: Fri Jul 18 08:47:19 2025
 Charted by: Depth in Feet scaled 1:240





Calibration Report

Database File: occidental_wildflower33-27_0512332142_2025018_scbl.db
 Dataset Pathname: pass3
 Dataset Creation: Fri Jul 18 08:51:45 2025

Gamma Ray Calibration Report

Serial Number: 071129
 Tool Model: GR275B
 Performed: Sun Jun 1 15:56:14 2025

Calibrator Value: 250.0 GAPI

Background Reading: 34.9 cps
 Calibrator Reading: 302.3 cps

Sensitivity: 0.8500 GAPI/cps

Segmented Cement Bond Log Calibration Report

Serial Number: 070150
 Tool Model: Probe

Calibration Casing Diameter: 7.000 in
 Calibration Depth: -92.442 ft

Master Calibration, performed Fri Jul 18 08:36:18 2025:

	Raw (v)		Calibrated (mv)		Results	
	Zero	Cal	Zero	Cal	Gain	Offset
3'	-0.006	1.021	0.700	81.200	78.364	1.200
CAL	-0.007	1.050				
5'	-0.007	1.024	0.700	81.200	78.136	1.209
SUM						
S1	-0.006	1.049	0.000	100.000	94.778	0.599
S2	-0.006	0.997	0.000	100.000	99.659	0.633
S3	-0.006	0.988	0.000	100.000	100.589	0.650
S4	-0.006	0.977	0.000	100.000	101.703	0.652
S5	-0.006	1.002	0.000	100.000	99.191	0.636
S6	-0.006	1.036	0.000	100.000	95.905	0.618
S7	-0.006	1.010	0.000	100.000	98.425	0.639
S8	-0.006	1.041	0.000	100.000	95.453	0.609

Internal Reference Calibration, performed (Not Performed):

	Raw (v)		Calibrated (v)		Results	
	Zero	Cal	Zero	Cal	Gain	Offset
CAL	0.000	0.000	-0.007	1.050	1.000	0.000

Air Zero Calibration, performed Sun Jun 1 15:56:45 2025:

	Raw (v)		Calibrated (v)		Results	
	Zero		Zero		Gain	Offset
3'	0.000		0.000			0.000
5'	0.000		0.000			0.000
SUM						
S1	0.000		0.000			0.000
S2	0.000		0.000			0.000
S3	0.000		0.000			0.000
S4	0.000		0.000			0.000
S5	0.000		0.000			0.000
S6	0.000		0.000			0.000
S7	0.000		0.000			0.000
S8	0.000		0.000			0.000



Company **OCCIDENTAL PETROLEUM CORP**
 Well **WILDFLOWER 33-27**
 Field **WATTENBERG**
 County **WELD**
 State **CO**