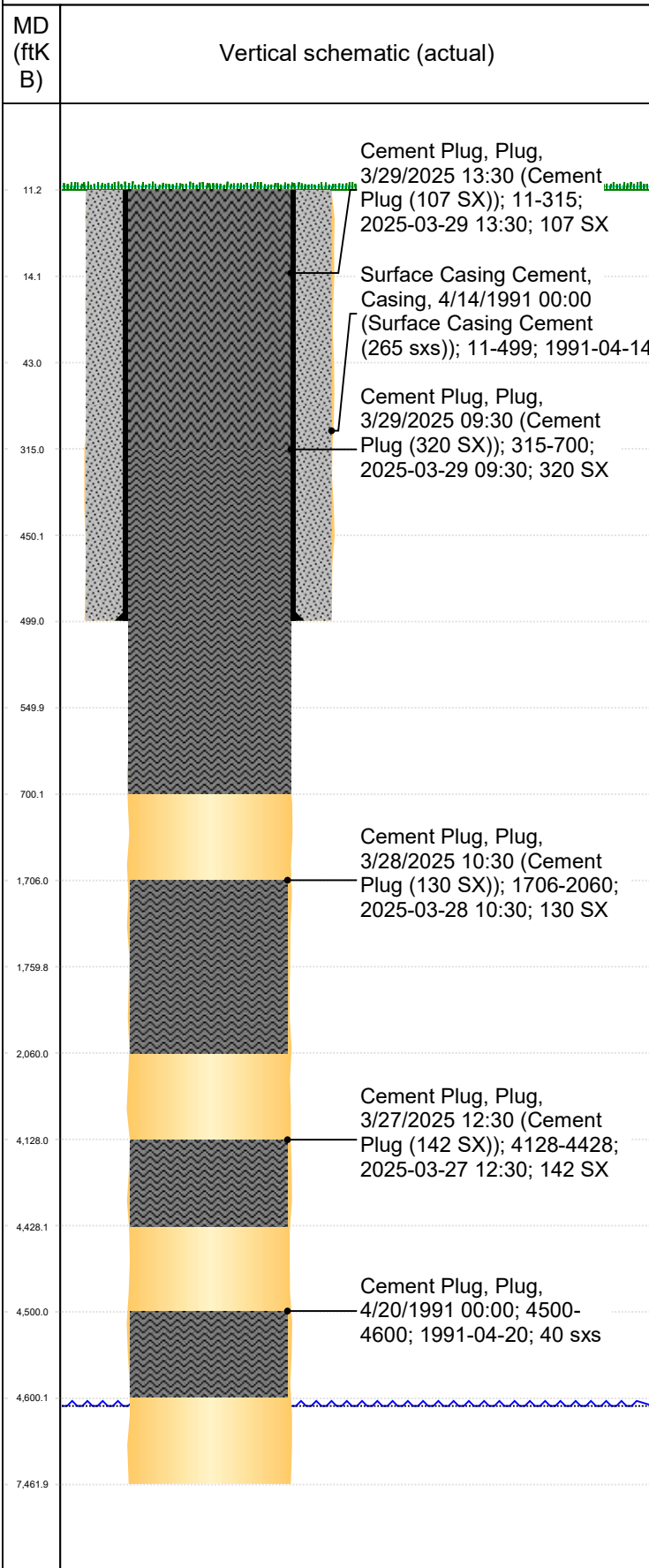




PA Wellbore For State - Vertical

Well Name: Mile High Turkey 2-7K

Original Hole



Well Header				
Surface UWI 0512314965	Business Unit Rockies	Gov Auth Dist	Prod Tree Loc	
Orig. KB to Gnd (ft) 11.00	Original Spud Date 4/14/1991	Abandon Date 7/22/2025	Well Sub-Status DA	High... N
Comment				

Geologic Horizons	
Formation Name Sussex	Final Top MD (ftKB) 4,478.0
Formation Name Niobrara	Final Top MD (ftKB) 7,057.0
Formation Name Codell	Final Top MD (ftKB) 7,333.0

Wellbore Sections			
Section Des	Hole Size (in)	Top Depth (ftKB)	Btm Depth (ftKB)
Surface	12 1/4	11.0	499.0
Production	7 7/8	499.0	7,462.0

Casing Strings						
Csg Des	Run Date	OD (in)	Wt/Len (lb/ft)	Grade	Top Depth (MD) (ftKB)	Set Depth (MD) (ftKB)
Surface	4/14/1991	8 5/8	23.00		11	499

Cement			
Des	Start Date	Top (ftKB)	Btm (ftKB)
Surface Casing Cement (265 sxs)	4/14/1991	11.0	499.0
Surface Plug	4/20/1991	11.0	43.0
Surface Shoe Plug	4/20/1991	450.0	550.0
Cement Plug	4/20/1991	4,500.0	4,600.0
Cement Plug (142 SX)	3/27/2025	4,128.0	4,428.0
Cement Plug (130 SX)	3/28/2025	1,760.0	2,060.0
Cement Plug (320 SX)	3/29/2025	315.0	700.0
Cement Plug (107 SX)	3/29/2025	11.0	315.0

Stim/Frac Summary	
Min Top Depth (ftKB)	Max Btm Depth (ftKB)

Perforations			
Linked Zone	Date	Top Depth (ftKB)	Bottom Depth (ftKB)

Other In Hole					
Run Date	Des	Make	OD (in)	Top (ftKB)	Btm (ftKB)

Logs			
Date	Type	Depth Top (MD) (ftKB)	Btm (ftKB)