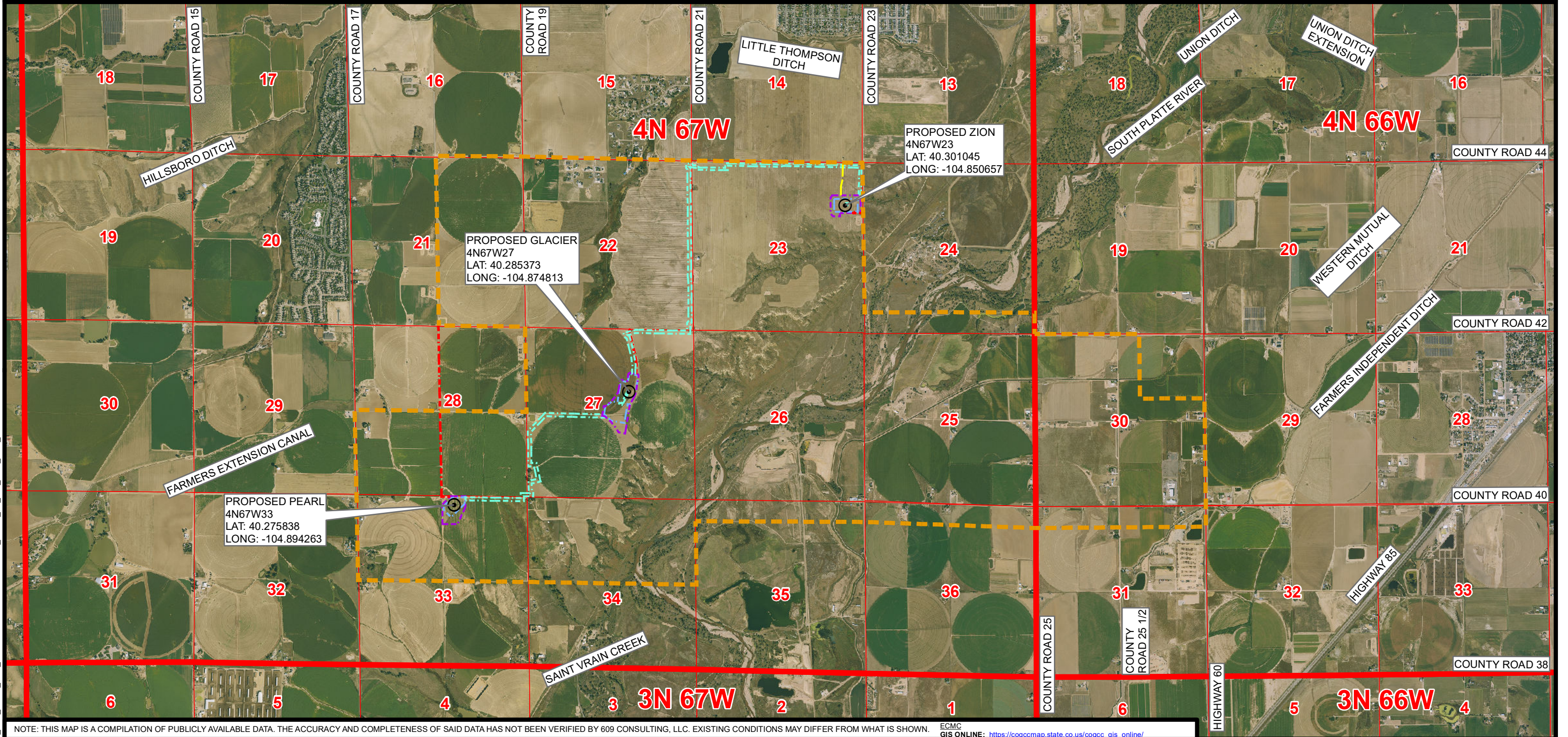


OIL AND GAS DEVELOPMENT PLAN MAP PARKS OGDG

SECTIONS 23, 27 & 33 TOWNSHIP 4 NORTH, RANGE 67 WEST, 6TH P.M., WELD COUNTY, COLORADO



NOTE: THIS MAP IS A COMPILATION OF PUBLICLY AVAILABLE DATA. THE ACCURACY AND COMPLETENESS OF SAID DATA HAS NOT BEEN VERIFIED BY 609 CONSULTING, LLC. EXISTING CONDITIONS MAY DIFFER FROM WHAT IS SHOWN.

ECMC
GIS ONLINE: https://cogccrmap.state.co.us/cogccg_gis_online/

Legend	
	PROPOSED REFERENCE POINT
	PROPOSED ACCESS ROAD
	TEMPORARY ACCESS ROAD
	PROPOSED OIL AND GAS LOCATION
	PROPOSED WORKING PAD SURFACE
	PROPOSED FLOWLINE CORRIDOR
	OGDP MINERAL DEVELOPMENT AREA

PDC ENERGY
1099 18th Street
Granite Tower, Suite 1500
Denver, Colorado 80202

On August 7, 2023, Chevron acquired PDC Energy, Inc. ("PDC"). PDC is continuing to operate as a wholly owned subsidiary of Chevron.

LOVELAND OFFICE
6706 North Franklin Avenue
Loveland, Colorado 80538
Phone 970-776-4331

SHERIDAN OFFICE
1095 Saberton Avenue
Sheridan, Wyoming 82801
Phone 307-674-0609

Drawn by: AK
Revised: AK

Date: 31 Jan 2025
Date: 18 Aug 2025

N

NAD83 CO-Nft

1" = 3,000ft

0 1,500 3,000

K:\PDC ENERGY\2022\2022_20_ZION_T4N_R67W_SEC_23\GIS\FORM 2\MAPS\PARKS_FORM_2A_OIL_AND_GAS_DEVELOPMENT.mxd 8/18/2025 9:36:38 AM