

July 24, 2025

Kathy Vertiz
Contract EHS Specialist
QB Energy Operating, LLC

Via email: KVertiz@qb-energy.com
cc: bmiddleton@qb-energy.com

RE: H14 699 (Gasaway Federal 6202) Vegetation Monitoring Summary

Dear Kathy,

Per your request, WestWater biologists have completed vegetation monitoring for the above referenced reclaimed location. We utilized the Bureau of Land Management's (BLM) Assessment, Inventory, and Monitoring (AIM) strategy for data collection and the resulting data has been entered into the Database for Inventory, Monitoring and Assessment (DIMA). In addition to monitoring the reclaimed area we selected and inventoried a reference site for this location.

Attached you will find the results summary and photos of the reclaim and reference areas. Based on the information we collected this year and our understanding of BLM and Colorado Energy and Carbon Management Commission (ECMC) final reclamation requirements, this site meets the 80% reference criteria for Final Abandonment Notice. The table below is a summary of the vegetation monitoring effort.

Percent Cover Summary for the H14 699 Final Reclaim Site

	Reference Site	Reclaim Site
Total Percent Foliar Cover	68	71.4
Total Percent Desirable Foliar Cover	61	64.0
Total Percent Basal Cover	0	0
Percent Bare Ground	20	13.3
% Desirable Cover of Reference Site	104.9	
Site Meets 80% of Reference Criteria		

The site appears in stable condition and desirable seeded species appear to be well established.

If there is any additional information we can provide or clarify please contact me.

Sincerely,



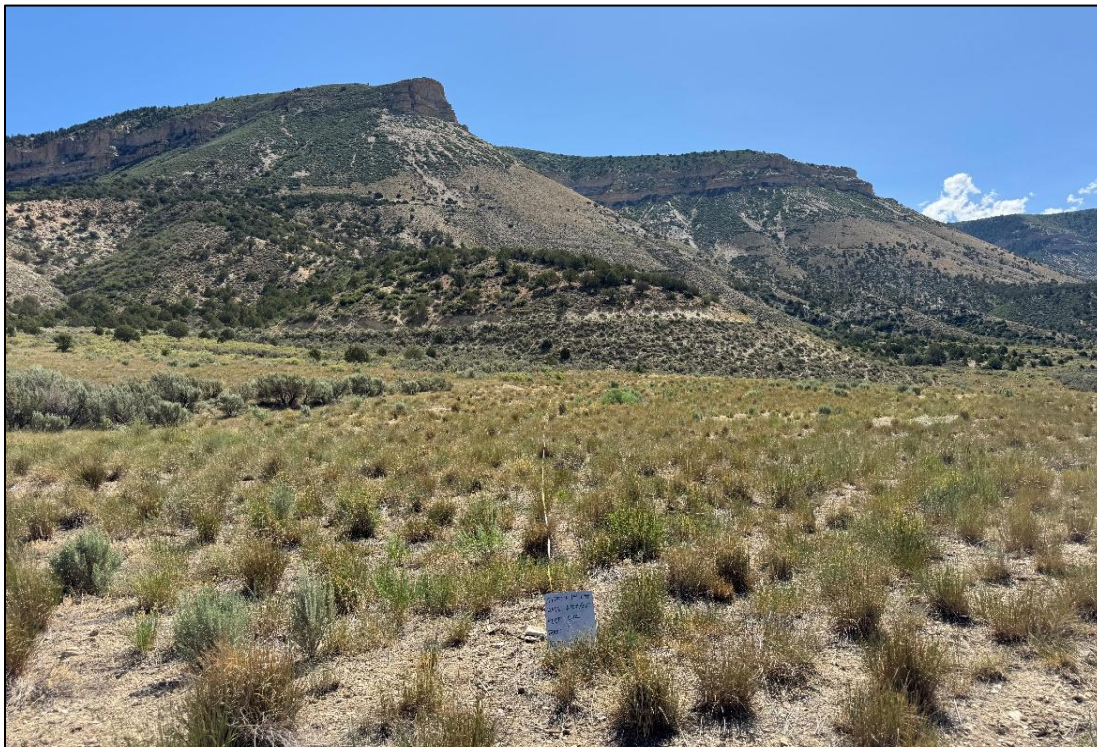
Amie Wilsey
Principal Environmental Scientist

Attachments

**H14 699 Final Reclaim Site
Average Percent Cover by Species**

Code	Scientific	Common	Average Percent Foliar Cover	Average Percent Basal Cover
Annual/Biennial				
ALSI8	<i>Alyssum simplex</i>	alyssum	4.0	0
BASC5	<i>Bassia scoparia</i>	burningbush	0.7	0
BRAR5	<i>Bromus arvensis</i>	field brome	0.0	0
BRTE	<i>Bromus tectorum</i>	cheatgrass	1.3	0
LEPE2	<i>Lepidium perfoliatum</i>	clasping pepperweed	0.7	0
Total Annual/Biennial			6.7	0
Perennial				
AGCR	<i>Agropyron cristatum</i>	crested wheatgrass	24.0	0
COAR4	<i>Convolvulus arvensis</i>	field bindweed	0.7	0
ELLA3	<i>Elymus lanceolatus</i>	thickspike wheatgrass	1.3	0
ERNA10	<i>Ericameria nauseosa</i>	rubber rabbitbrush	0.7	0
PASM	<i>Pascopyrum smithii</i>	western wheatgrass	6.7	0
THIN6	<i>Thinopyrum intermedium</i>	intermediate wheatgrass	31.3	0
Total Perennial			64.7	0
Total Cover			71.4	0
% Bare Ground			13.3	
Total Litter Between Plant Cover			84.7	

Red = Undesirable Species





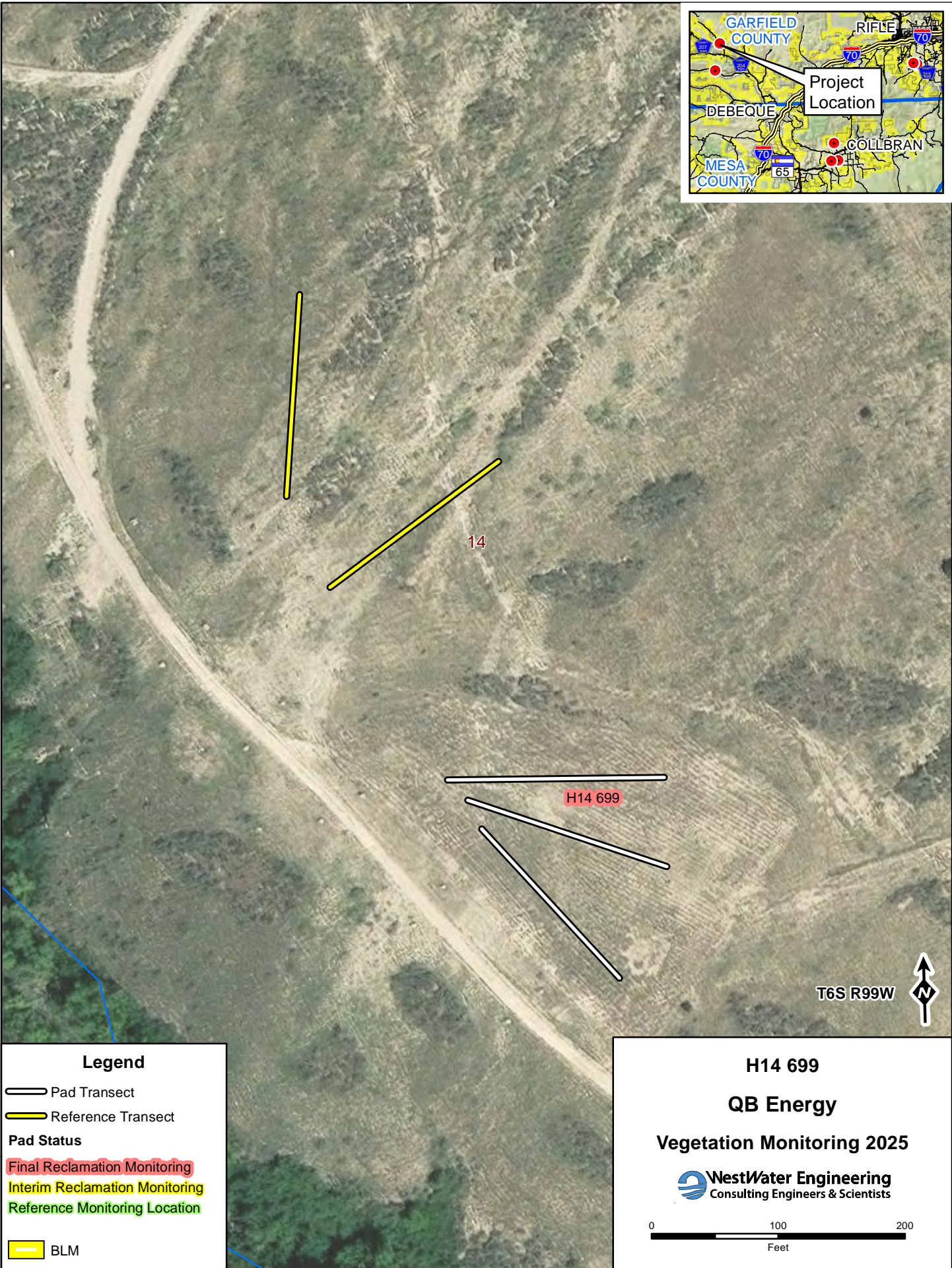
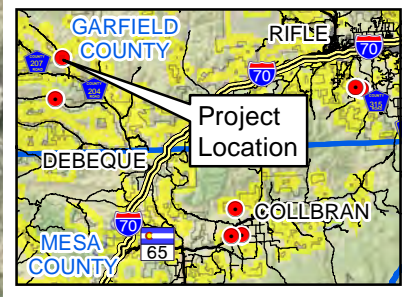
H14 699 Reference Site
Average Percent Cover by Species

Code	Scientific	Common	Average Percent Foliar Cover	Average Percent Basal Cover
Annual/Biennial				
ALSI8	<i>Alyssum simplex</i>	alyssum	1	0
BRTE	<i>Bromus tectorum</i>	cheatgrass	3	0
ONAC	<i>Onopordum acanthium</i>	Scotch cottonthistle	3	0
Total Annual/Biennial			7	0
Perennial				
AGCR	<i>Agropyron cristatum</i>	crested wheatgrass	32	0
PASM	<i>Pascopyrum smithii</i>	western wheatgrass	14	0
THIN6	<i>Thinopyrum intermedium</i>	intermediate wheatgrass	14	0
THPO7	<i>Thinopyrum ponticum</i>	tall wheatgrass	1	0
Total Perennial			61	0
Total Cover			68	0
% Bare Ground			20	
Total Litter Between Plant Cover			12	

Red = Undesirable Species







T6S R99W



Legend

— Pad Transect

— Reference Transect

Pad Status

Final Reclamation Monitoring

Interim Reclamation Monitoring

Reference Monitoring Location

— BLM

H14 699

QB Energy

Vegetation Monitoring 2025

WestWater Engineering
Consulting Engineers & Scientists

0 100 200
Feet

Map Source: Z:\QB Energy\Reclamation Monitoring\2025 FAN Pads\GIS\FAN Transect Maps 7-22-25\H14 699.mxd 7/25/2025 tbb