

**ACOUSTIC CEMENT BOND -
GAMMA RAY LOG**

COMPANY UNION TEXAS
PETROLEUM CORPORATION
WELL JONES #3
FIELD RUSH WILLADEL
County WASHINGTON
State COLORADO
File

COMPANY UNION TEXAS PETROLEUM CORPORATION
WELL JONES #3
FIELD RUSH WILLADEL
COUNTY WASHINGTON STATE COLORADO
Location C NE SW
Sec. 26 Twp 35 Rge 51N
Elevation KB 4624
DF 4618
GL 4618

Permanent Datum G.L.
Log Measured From K.B. OR 6' A.G.L.
Drilling Measured From K.H.B.

Type Log	G/R ONE	C.B.L. ONE	
Run No.	8-25-71	8-25-71	
Date			
Total Depth Driller			
Present Depth Driller	4132	4132	
Total Depth O.W.P.	4132	2450	
Survey Begins	3900	4128	
Survey Ends			
Mud Date			
Type Fluid in Hole	WATER	WATER	
PPM Cl			
lb./gal	2150	2150	
Temp.			
By	KRESHA	KRESHA	
d By	M.R. A	T. FRY	
Bit			
From			
To			
Size	5 1/2		
Wt.			
From	BURZAO		
To	T.D.		

LOGGING TOOL DATA

Truck No.	Inst. Truck No. 508	Tool Serial No.	CEMENT BOND
GAMMA RAY			
Tool Model No.	Dia. 1 11/16"	Log Type	
Detector Model No.	Length 10"	Tool Model No.	Dia.
Type G.M.C.		Detector Model No.	
Distance To Bond Ref.		Free Casing =	API Div.
Reference Literature:		Amplifier	Serial No.
		Spacing	
		Transmitter	
		Power	

LOGGING DATA

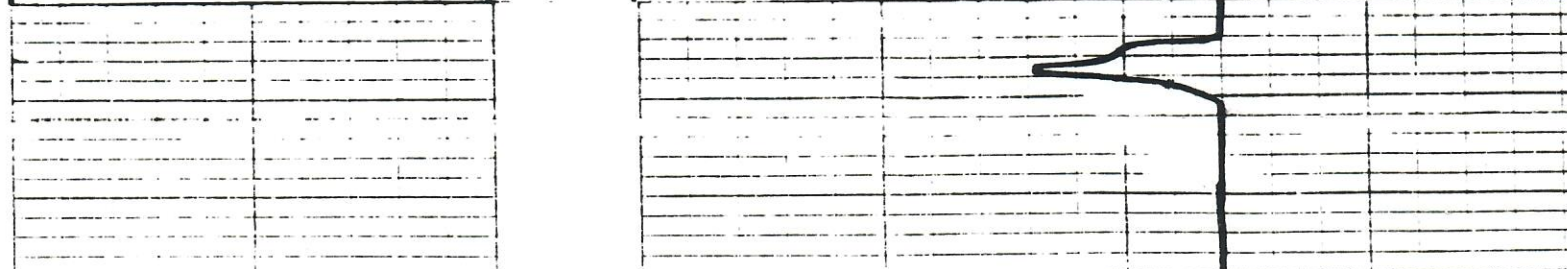
Depth		Speed	T. C.	Gamma Ray Setting			T. C.	Bond Setting		
From	To	Ft./min	Sec.	Sensitivity	Zero	Scale	Sec.	Sensitivity	Zero	Scale
4132	3900	20	2	120	0	5" = 100'				

Calibration Data
CEMENTING DATA & REMARKS: ACOUSTIC CEMENT BOND LOG RUN ON FIRST NEGATIVE PULSE W/15 MICROSECOND GATE. ACOUSTIC TOOL WAS PROPERLY CENTRALIZED FOR STANDARD 5 1/2" CASING

GAMMA RAY
RADIATION INTENSITY INCREASES

CASING & COLLAR LOG DEPTH

CEMENT BOND
CEMENT BONDING INCREASES





00332545

3700

3800

3900

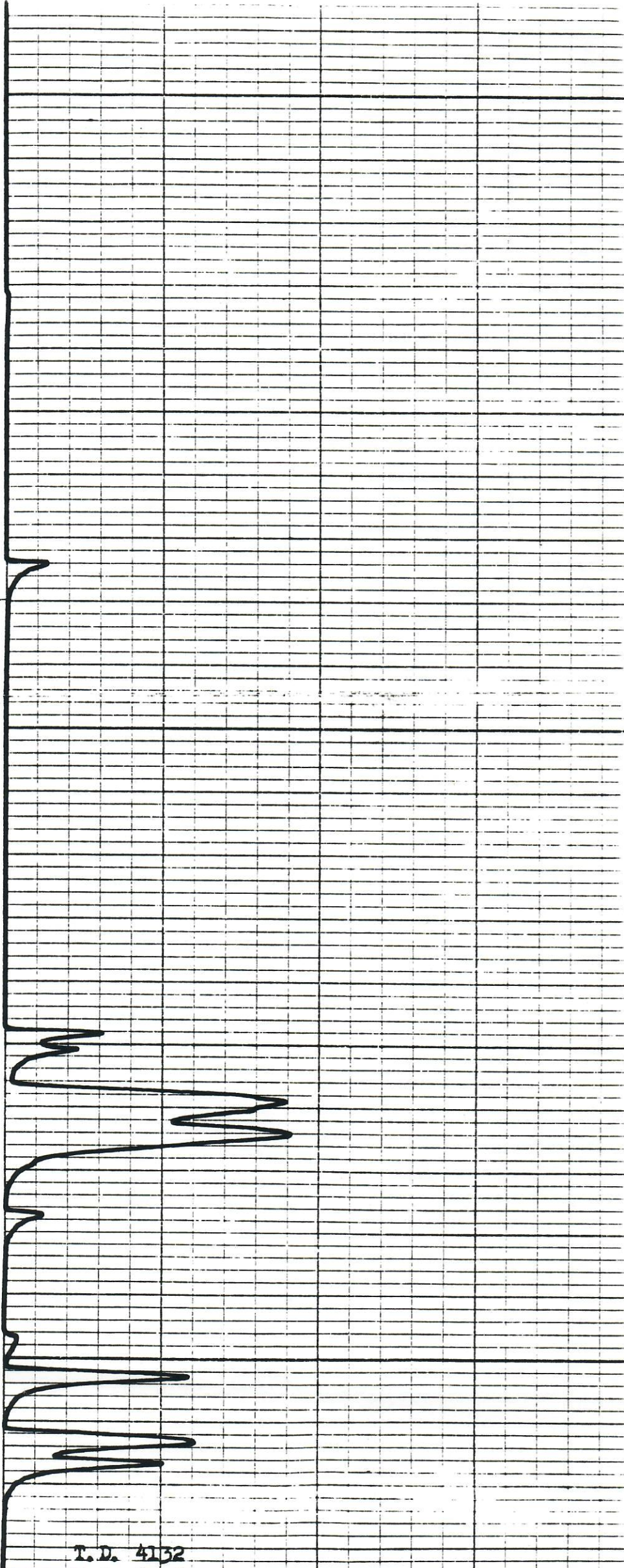


04332548

3900

4000

4100



T. D. 4132
R. D. 4128

← ACOUSTIC ZERO FREE CASING