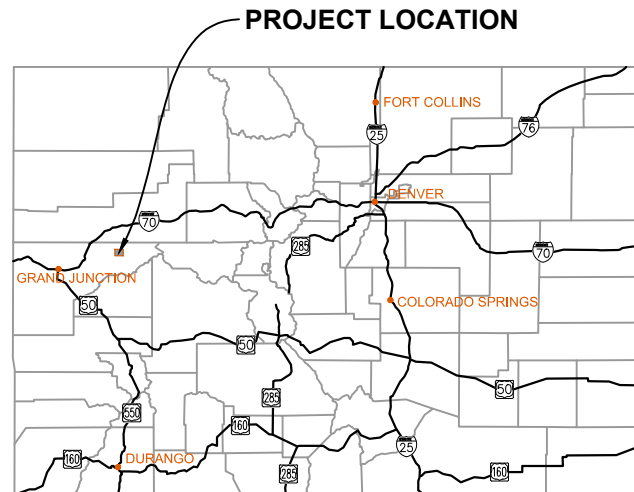


# CCR 0994-23-02 WELL PAD DESIGN

LARAMIE ENERGY, LLC

NWNE OF SECTION 23, T.9S., R.94W., 6TH P.M., MESA COUNTY, CO

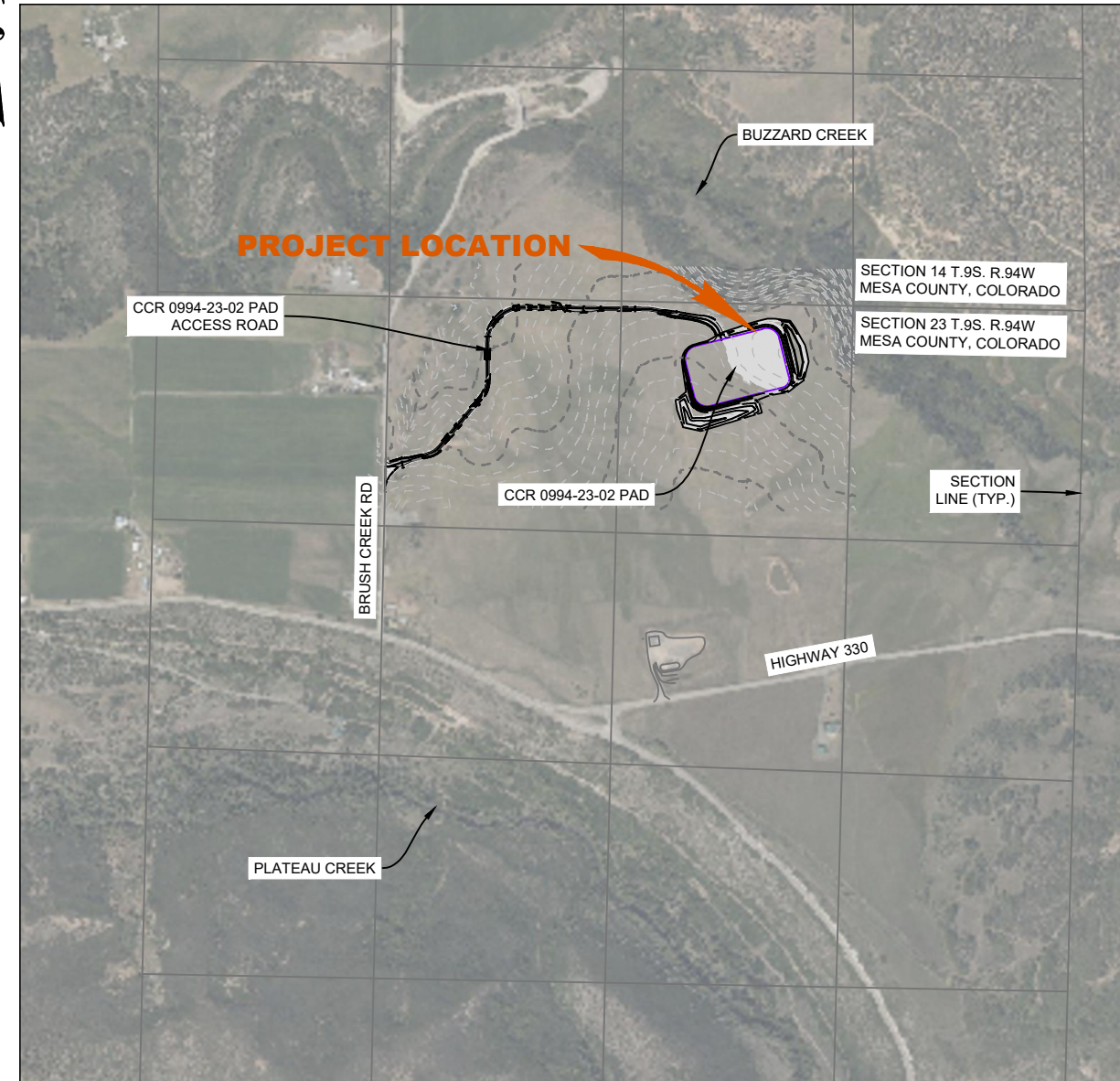
AUGUST 15, 2024



STATE OF COLORADO



NWNE OF SECTION 23, T.9S., R.94W., 6TH P.M., MESA COUNTY, CO



VICINITY MAP

1" = 1000'

## INDEX OF SHEETS

1.01	COVER SHEET
2.01	ROAD TYPICAL SECTIONS AND NOTES
3.01	PLAN SHEET LAYOUT
4.01 - 4.04	ROAD PLAN AND PROFILE
5.01 - 5.02	ROAD CROSS SECTIONS
6.01	CULVERT CROSS SECTIONS
7.01 - 7.04	PAD LAYOUTS
8.01 - 8.02	PAD CROSS SECTIONS
9.01 - 9.02	COMPLETIONS AND PRODUCTION LAYOUTS
10.01	FINAL RECLAMATION LAYOUT

## SITE INFORMATION

PAD:  
CCR 0994-23-02

HORIZONTALS:  
EASTERN - CCR 0994-11-A7-NH1  
WESTERN - CCR FED 0994-11-A3-NH1

## CERTIFICATION

I HEREBY CERTIFY THAT THE ATTACHED PLANS WERE PREPARED BY ME OR UNDER MY DIRECT SUPERVISION AND THAT I AM A DULY REGISTERED PROFESSIONAL ENGINEER IN THE STATE OF COLORADO.



DATE: \_\_\_\_\_



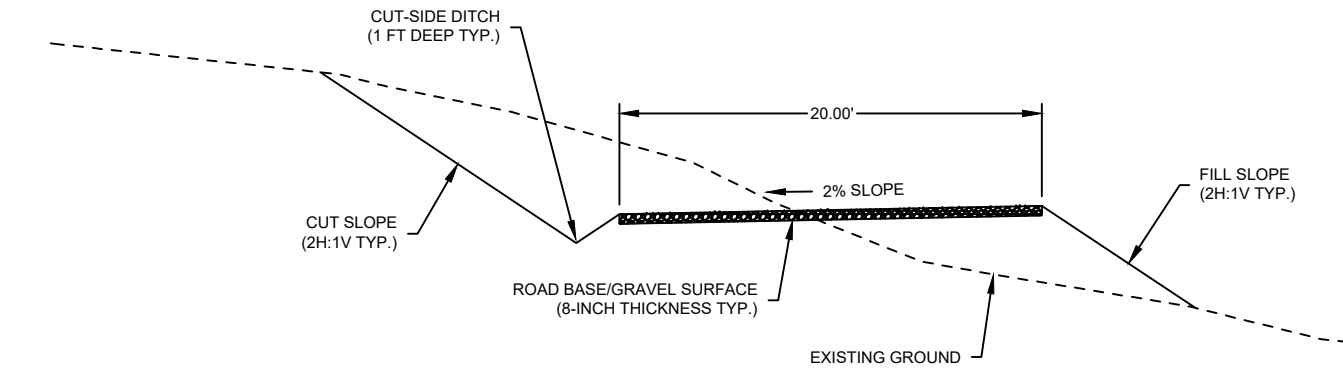
LARAMIE ENERGY, LLC  
760 HORIZON DRIVE, SUITE 101  
GRAND JUNCTION, CO 81506  
PH: 303.339.4682  
aedge@laramie-energy.com

KLJ ENGINEERING, LLC  
1601 RIVERFRONT DRIVE, SUITE 204  
GRAND JUNCTION, CO 81501  
PH: 970.450.7474  
www.kljeng.com

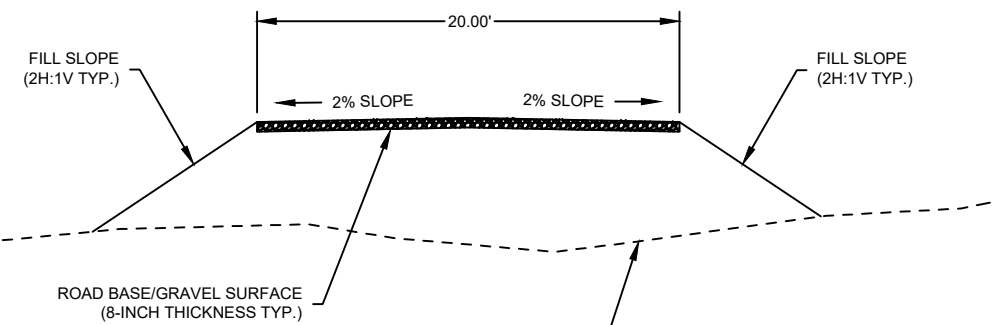


KLJ PROJECT NO. 2307-01465.2

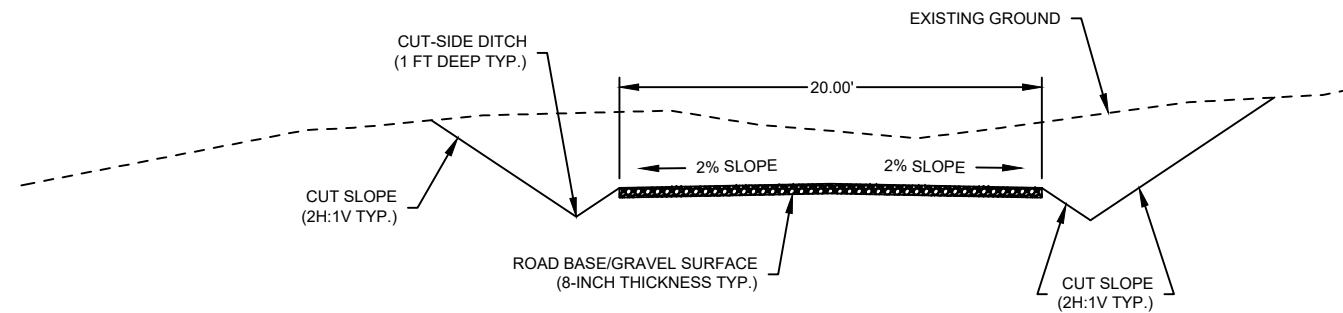
ROAD TYPICAL SECTIONS  
N.T.S



INSLOPE SECTION FOR CUT/FILL



CROWN SECTION FOR FILL



CROWN SECTION FOR CUT

NOTES

- PLEASE ALSO REFER TO THE DETAILS IN THE BLM "GOLD BOOK" FOURTH EDITION REVISED 2007. SPECIFICALLY FIGURE 3 (PG 20) AND FIGURE 7 (PG 34).
- MOISTURE CONDITIONING, PLACEMENT, AND COMPACTION OF SUBGRADE AND FILL MATERIALS ARE TO BE COMPLETED IN ACCORDANCE WITH THE GEOTECHNICAL ENGINEER'S RECOMMENDATIONS. IN THE ABSENCE OF SPECIFIC RECOMMENDATIONS PLEASE REFER TO THE FOLLOWING DOCUMENTS: BLM "GOLD BOOK" and BLM 9113-ROADS. ALL OF THESE DOCUMENTS ARE AVAILABLE ONLINE.
- MINIMIZE THE AREA OF DISTURBANCE AT ALL TIMES.
- SEGREGATE TOPSOIL AND PLACE ON CUT/FILL SLOPES OF ROADWAY AS PART OF REVEGETATION AND RECLAMATION.
- PRIMARY ACCESS ROAD DRIVING SURFACE WIDTH WILL BE 20 FEET. PLEASE REFER TO THE TYPICAL ROAD SECTION DETAILS (SEE ABOVE).
- SITE TOPOGRAPHIC SURVEY AND UTILITY DESIGNATIONS PROVIDED BY WASATCH SURVEYING. LOCATIONS OF UTILITIES SHOWN HEREON ARE BASED ON VISIBLE EVIDENCE FROM ABOVE GROUND STRUCTURES AND DRAWINGS PROVIDED BY OTHERS. NO EXCAVATIONS WERE MADE DURING THIS SURVEY TO DETERMINE EXACT LOCATION AND DEPTHS OF UNDERGROUND UTILITIES. ACTUAL LOCATIONS MAY VARY FROM THOSE SHOWN AND ADDITIONAL UTILITIES NOT SHOWN LIKELY EXIST. EXISTENCE AND LOCATIONS OF ALL UTILITIES SHOULD BE VERIFIED PRIOR TO THE START OF ANY WORK AT THIS SITE. CONTRACTOR SHALL BE RESPONSIBLE TO CONTACT 811 TO HAVE ALL UTILITIES MARKED AND LOCATIONS VERIFIED PRIOR TO ANY EXCAVATION.
- RCP CLASS 3 PIPE TO BE INSTALLED AS PER BLM GOLD BOOK AND MANUFACTURE'S RECOMMENDATIONS.
- CONTRACTOR TO INSTALL SEDIMENT TRAPS ON BOTH ENDS OF ALL CULVERTS AND WATTLES AT TOES OF FILL.



REVISION			
DATE	8/13/24	NO CHANGES	
NO.	1		
DRAFTED	JRH		
REVIEWED	MJK		
PROJECT NUMBER	2307-01465.2		
ISSUE DATE	8/15/24		

CCR 0994-23-02 WELL PAD DESIGN

LARAMIE ENERGY, LLC  
NW/NE OF SECTION 23, T. 9S., R. 94W., 6TH P.M., MESA COUNTY, CO

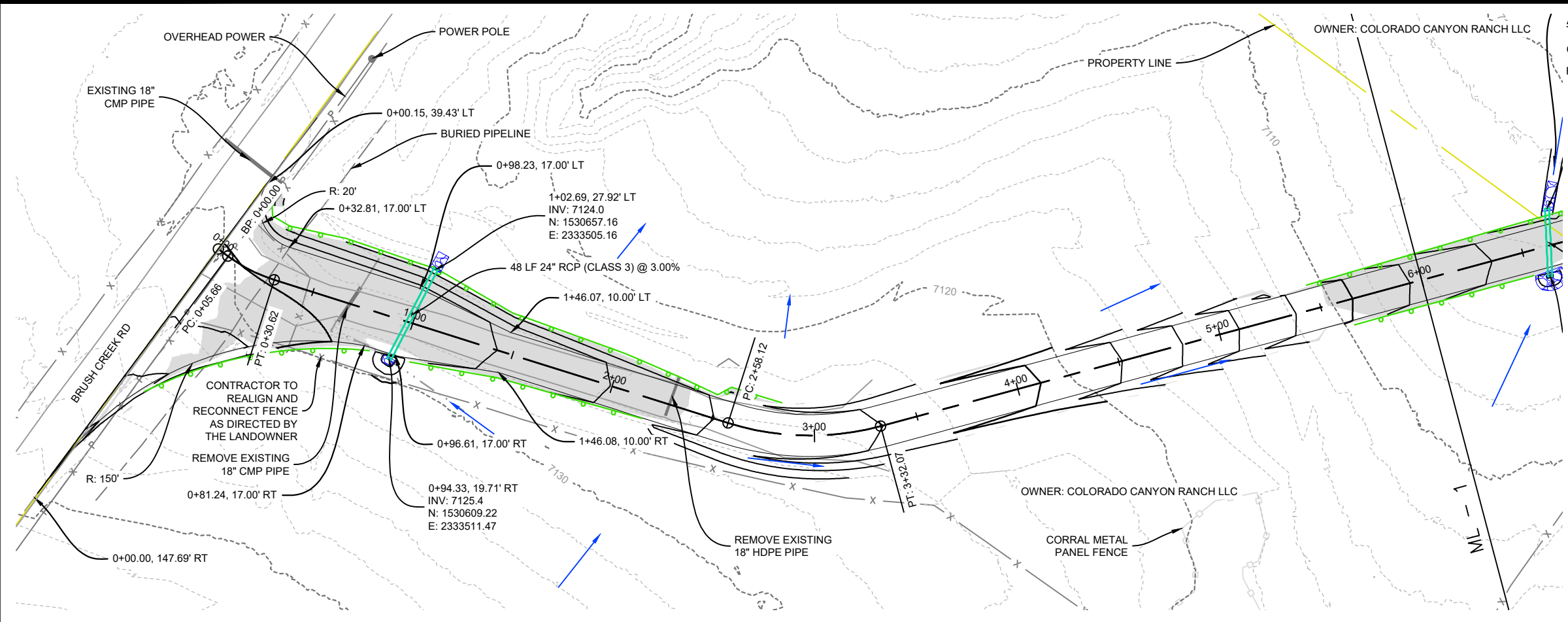
ROAD TYPICAL SECTIONS AND NOTES

SHEET  
2.01



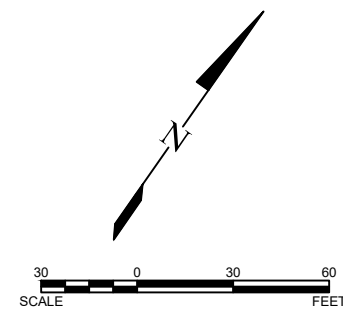
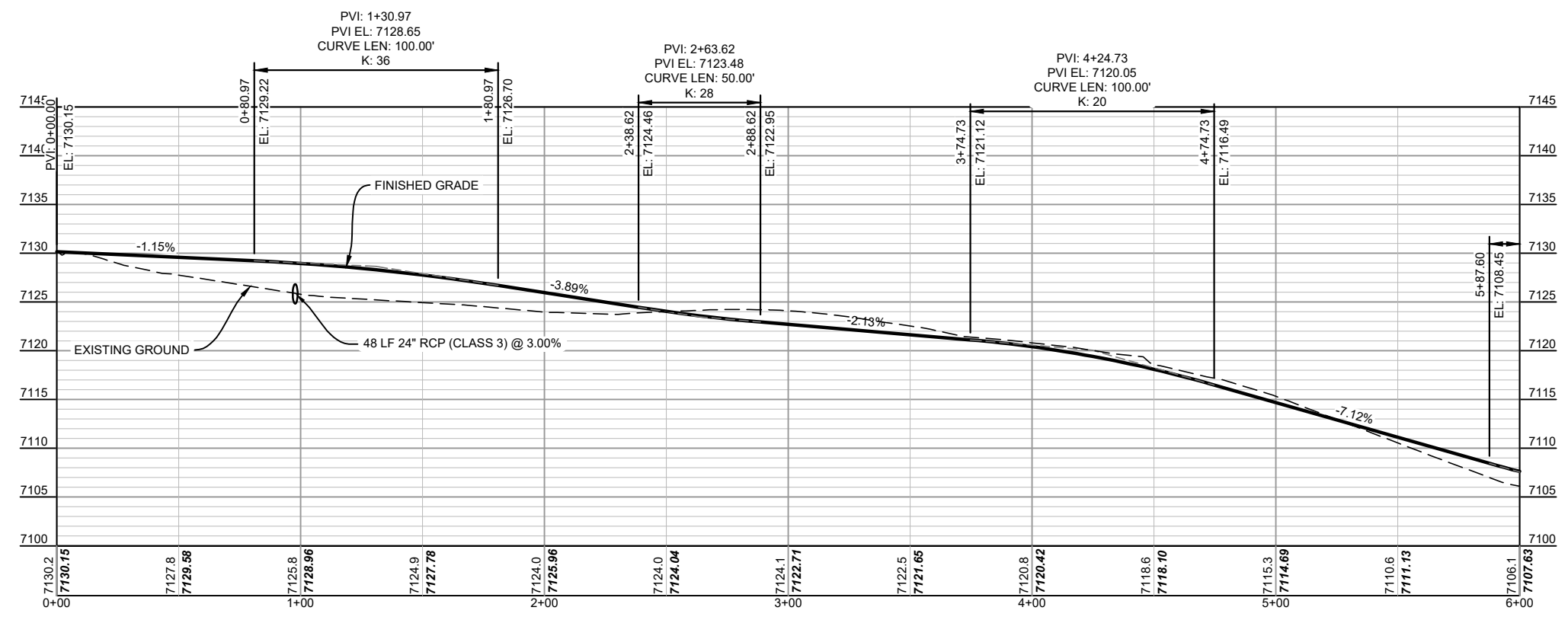


APPROXIMATE ROADWAY QUANTITIES THIS SHEET  
 CUT VOLUME 541 CY  
 FILL VOLUME 575 CY



**LEGEND**

- WATTLE
- EXISTING FENCE
- SEDIMENT TRAP
- FILL
- TREE
- HIGH PRIORITY HABITAT
- PARCEL BOUNDARY
- SECTION LINE
- STORMWATER FLOWLINE



REVISION	
DATE	8/13/24
NO.	1
REVISED LABELS/COLORS	
DRAFTED	JRH
REVIEWED	MJK
PROJECT NUMBER	2307-01465.2
ISSUE DATE	8/15/24

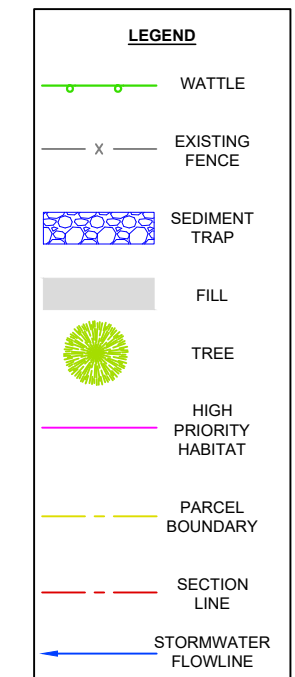
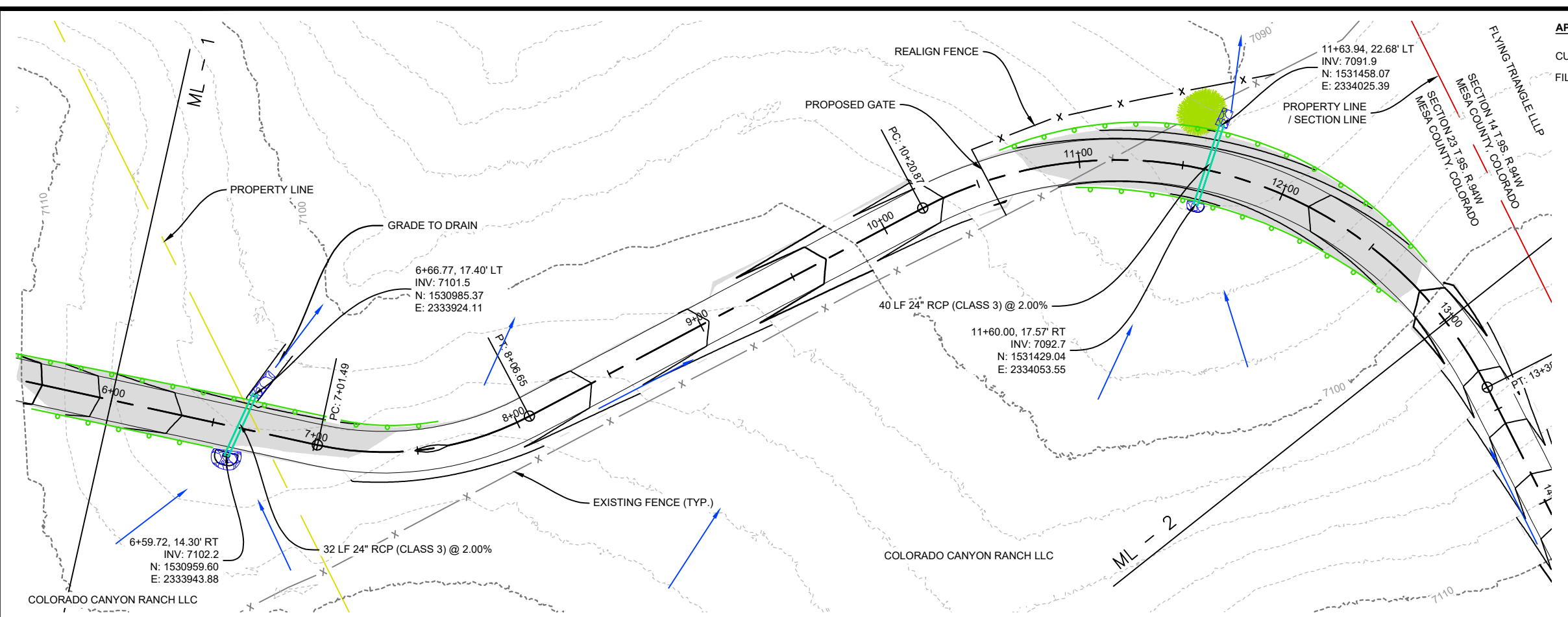
**CCR 0994-23-02 WELL PAD DESIGN**  
 LARAMIE ENERGY, LLC  
 NWNE OF SECTION 23, T.9S., R.94W., 6TH P.M., MESA COUNTY, CO  
**ACCESS ROAD PLAN AND PROFILE 1 OF 4**

SHEET  
**4.01**



APPROXIMATE ROADWAY QUANTITIES THIS SHEET

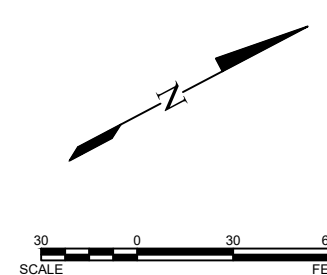
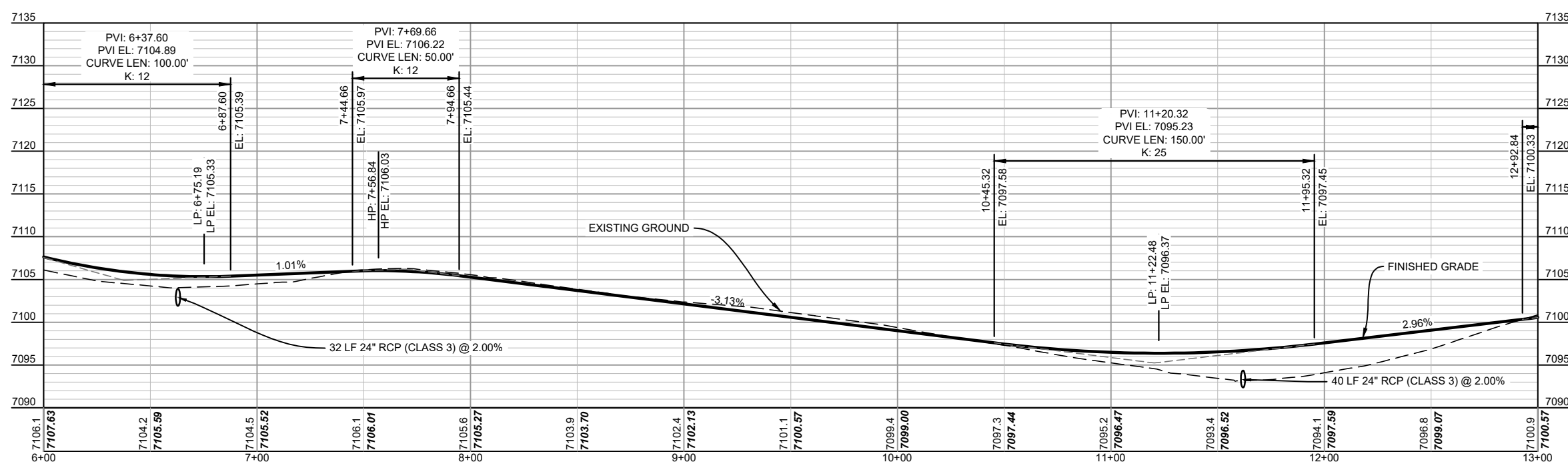
CUT VOLUME 359 CY  
FILL VOLUME 485 CY



REVISION	DATE	NO.	REVISED LABELS/COLORS
	8/13/24	1	

DRAFTED	JRH
REVIEWED	MJK
PROJECT NUMBER	2307-01465.2
ISSUE DATE	8/15/24



**CCR 0994-23-02 WELL PAD DESIGN**  
LARAMIE ENERGY, LLC  
NWNE OF SECTION 23, T.9S., R.94W., 6TH P.M., MESA COUNTY, CO  
**ACCESS ROAD PLAN AND PROFILE 2 OF 4**

SHEET  
4.02



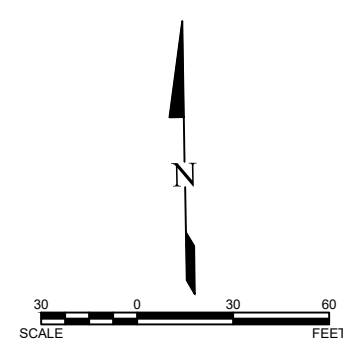
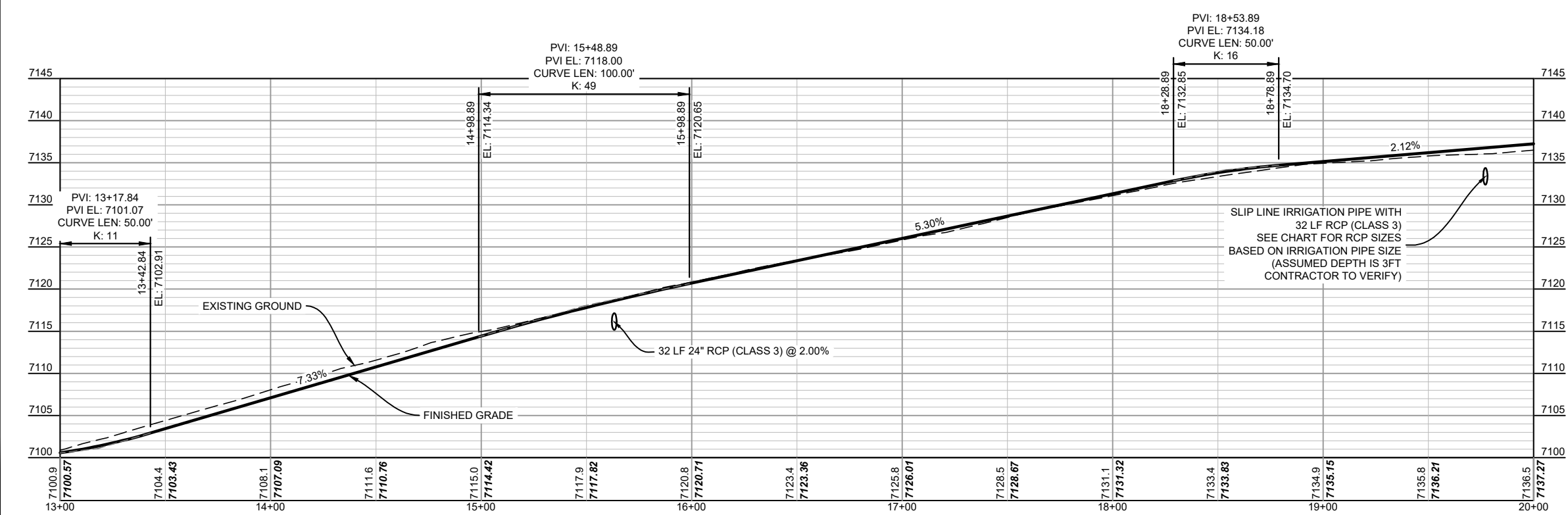
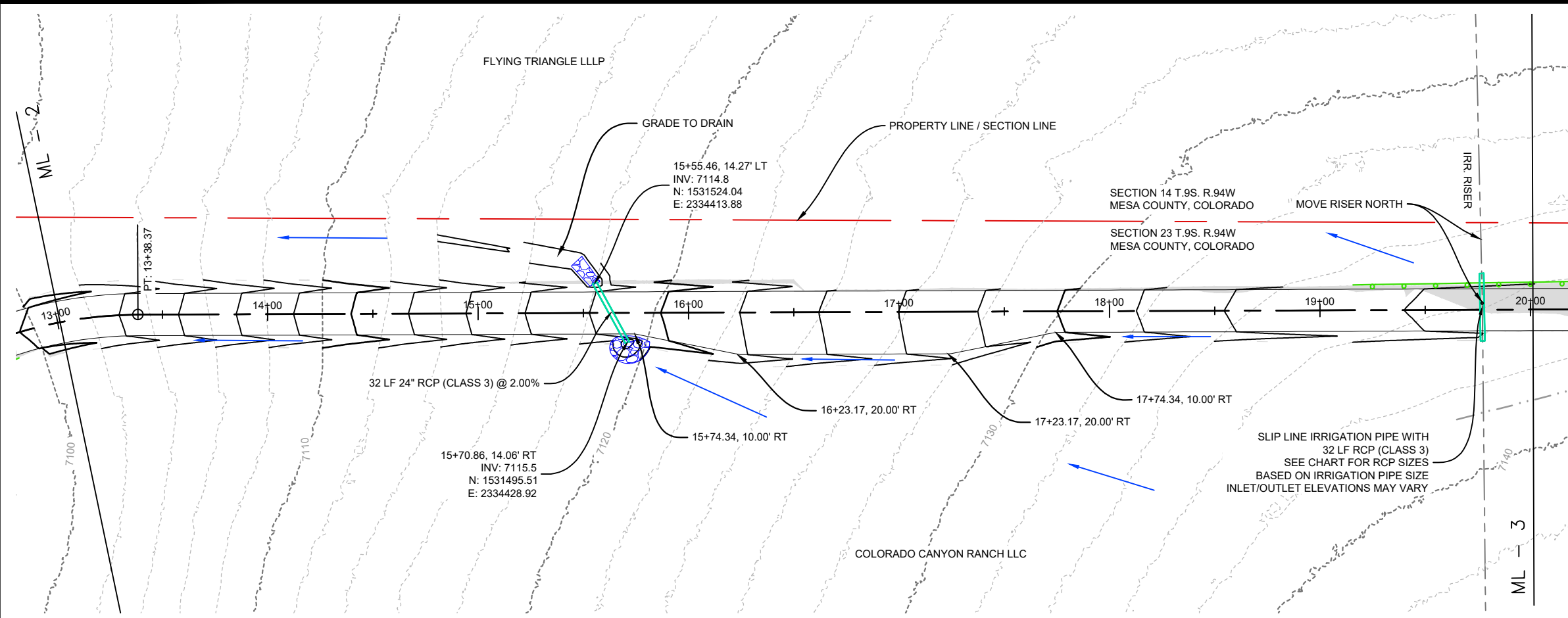
APPROXIMATE ROADWAY QUANTITIES THIS SHEET

CUT VOLUME 735 CY  
FILL VOLUME 9 CY

IRR. PIPE SIZE (INCHES)	IRR. PIPE BELL SIZE (INCHES)	RCP SIZE (INCHES)
10	11.5	18
12	13.5	18
14	14.8	18
16	16.8	24
18	18.8	24

**LEGEND**

- WATTLE
- EXISTING FENCE
- SEDIMENT TRAP
- FILL
- TREE
- HIGH PRIORITY HABITAT
- PARCEL BOUNDARY
- SECTION LINE
- STORMWATER FLOWLINE



REVISION	DATE	NO.	REVISED LABELS/COLORS
	8/13/24	1	

DRAFTED: JRH  
REVIEWED: MJK  
PROJECT NUMBER: 2307-01465.2  
ISSUE DATE: 8/15/24

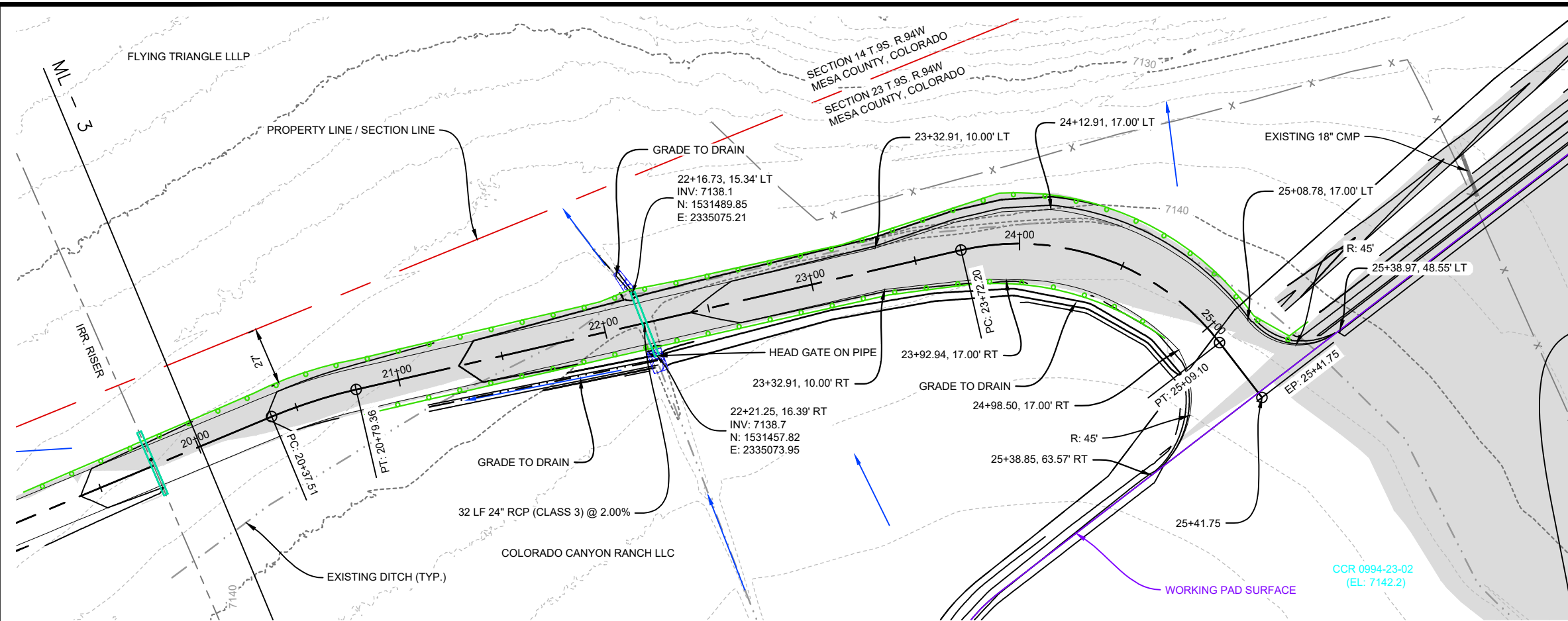
**CCR 0994-23-02 WELL PAD DESIGN**  
LARAMIE ENERGY, LLC  
NWNE OF SECTION 23, T.9S., R.94W., 6TH P.M., MESA COUNTY, CO  
**ACCESS ROAD PLAN AND PROFILE 3 OF 4**

SHEET  
**4.03**



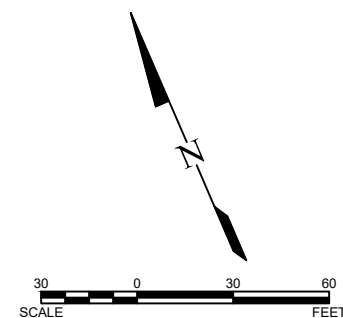
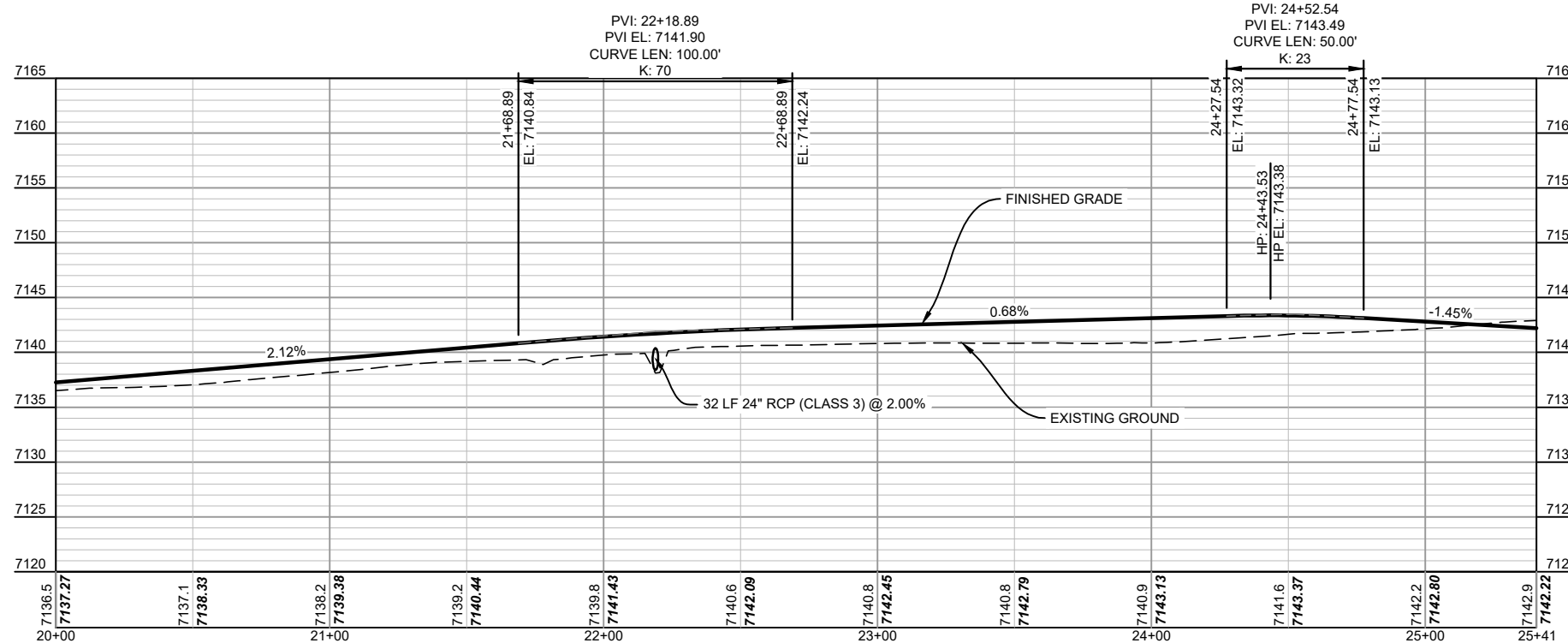
APPROXIMATE ROADWAY QUANTITIES THIS SHEET

CUT VOLUME 41 CY  
FILL VOLUME 597 CY



**LEGEND**

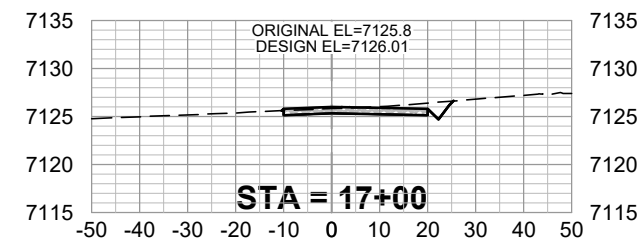
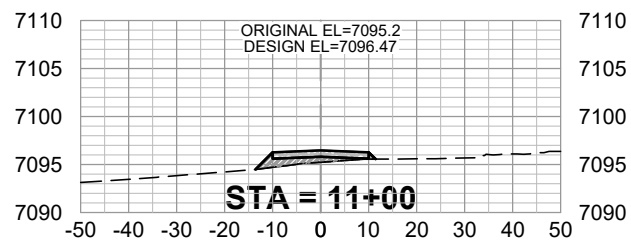
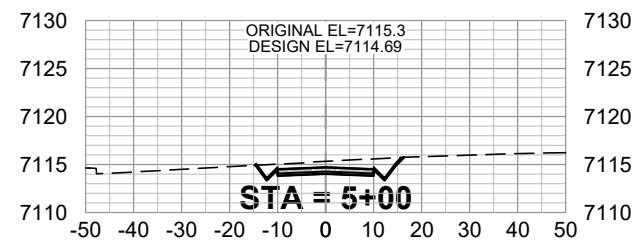
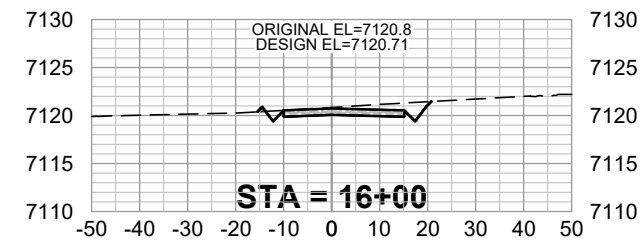
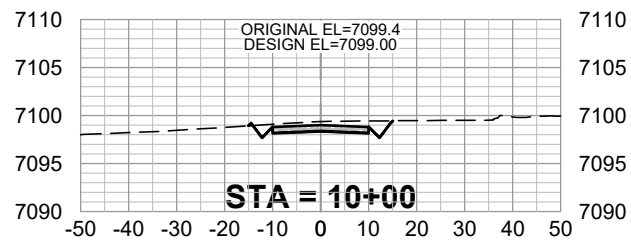
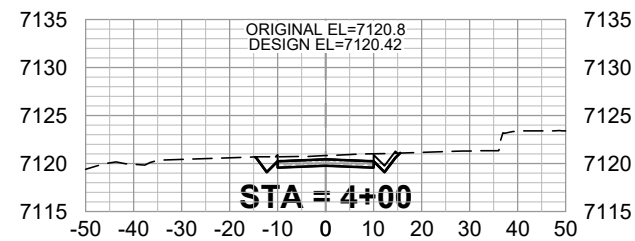
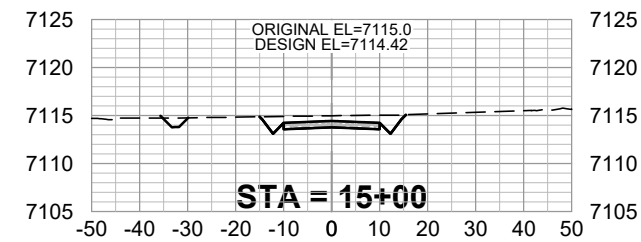
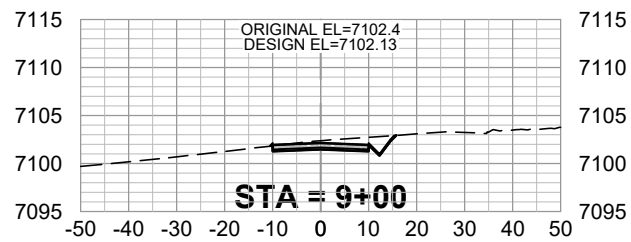
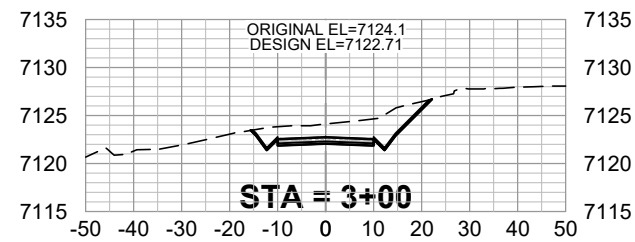
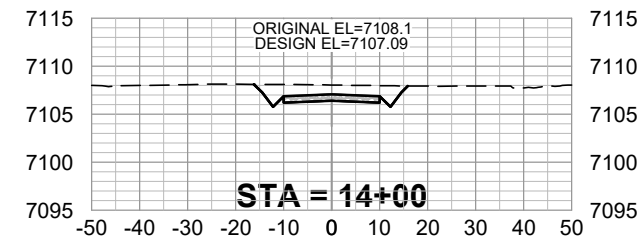
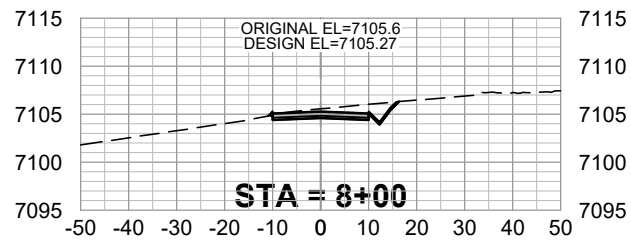
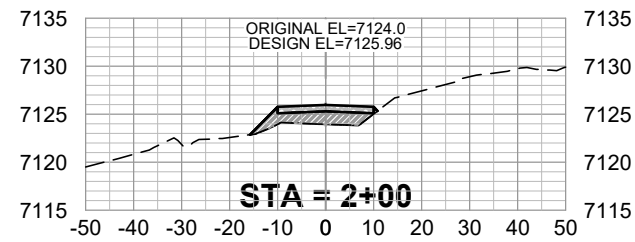
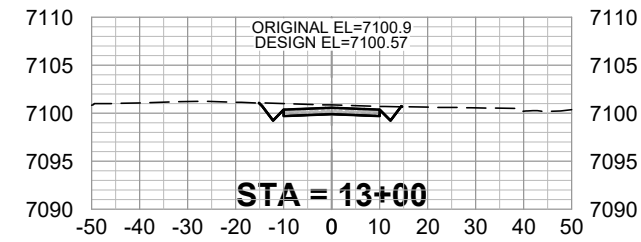
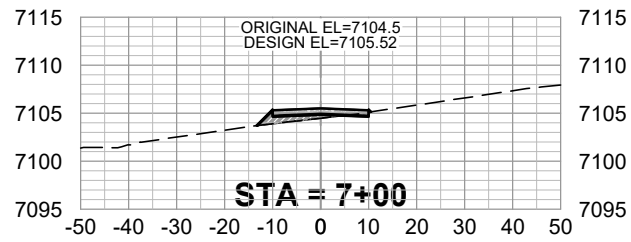
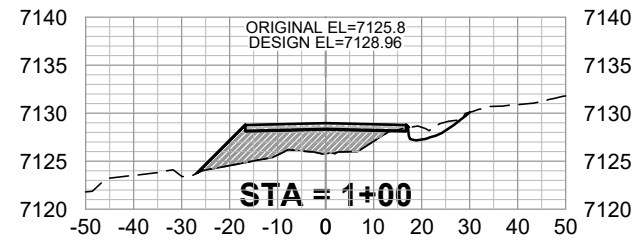
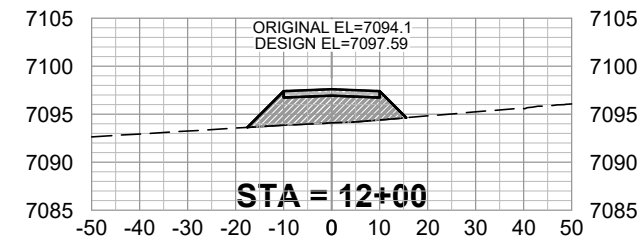
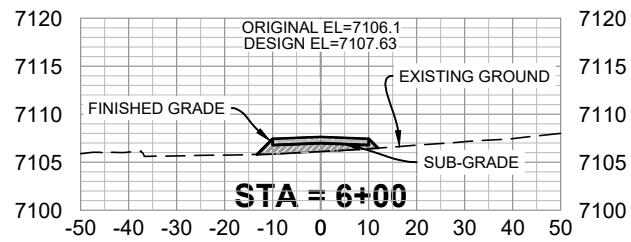
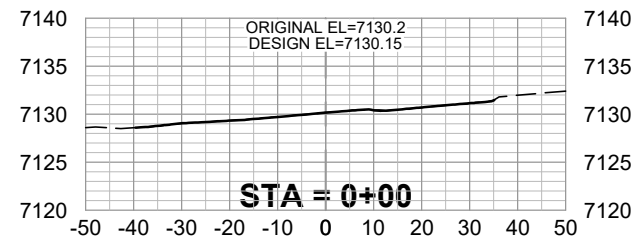
- WATTLE
- EXISTING FENCE
- SEDIMENT TRAP
- FILL
- TREE
- HIGH PRIORITY HABITAT
- PARCEL BOUNDARY
- SECTION LINE
- STORMWATER FLOWLINE



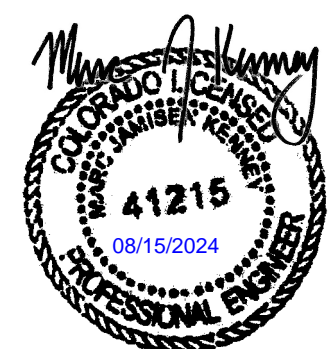
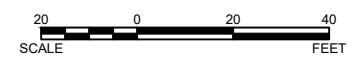
REVISION	
DATE	8/13/24
NO.	1
DRAFTED JRH	
REVIEWED MJK	
PROJECT NUMBER 2307-01465.2	
ISSUE DATE 8/15/24	

**CCR 0994-23-02 WELL PAD DESIGN**  
LARAMIE ENERGY, LLC  
NW/4E OF SECTION 23, T.9S., R.94W., 6TH P.M., MESA COUNTY, CO  
**ACCESS ROAD PLAN AND PROFILE 4 OF 4**

SHEET  
4.04

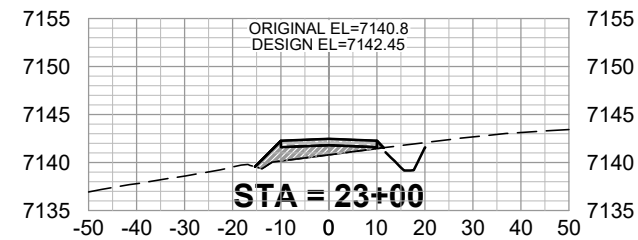
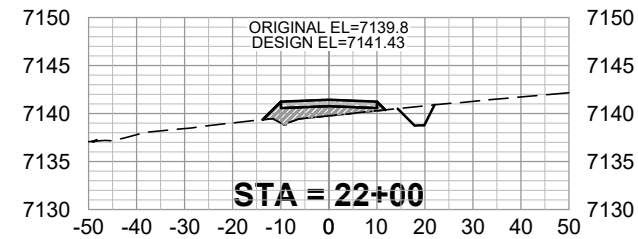
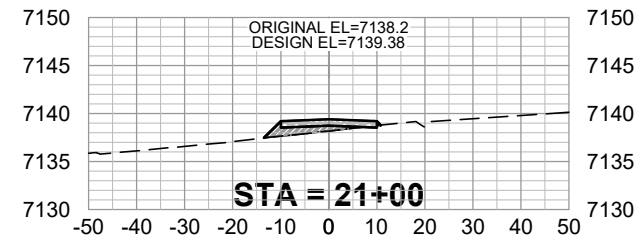
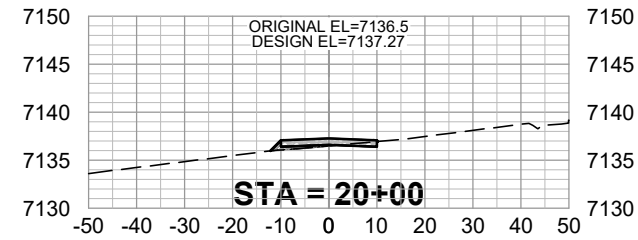
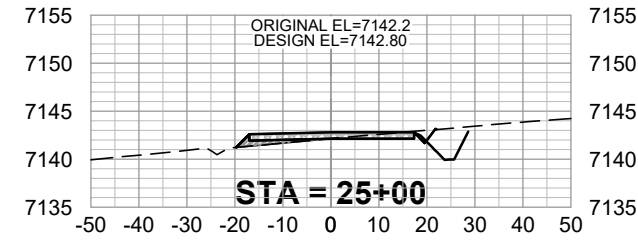
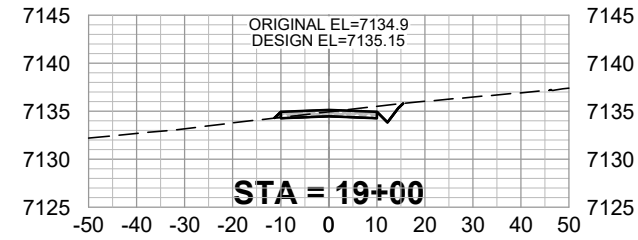
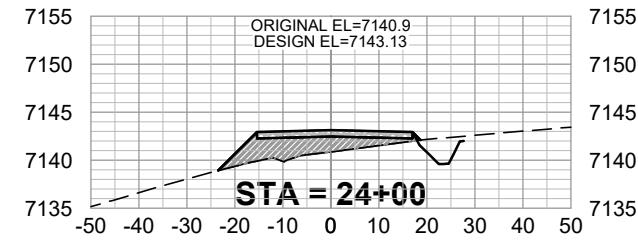
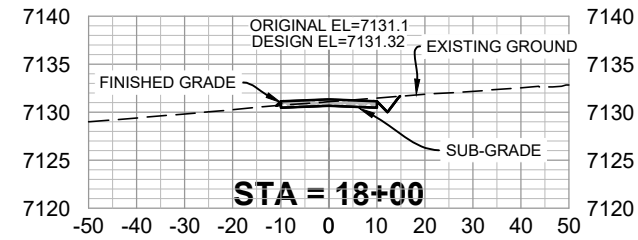


NOTE: VERTICAL SCALE 1" = 20'

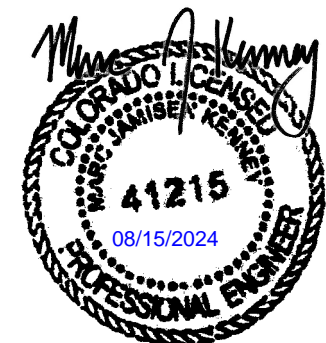
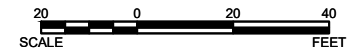


REVISION		
DATE	8/13/24	NO CHANGES
NO.	1	
DRAFTED	JRH	
REVIEWED	MJK	
PROJECT NUMBER	2307-01465.2	
ISSUE DATE	8/15/24	

**CCR 0994-23-02 WELL PAD DESIGN**  
 LARAMIE ENERGY, LLC  
 NW/4E OF SECTION 23, T.9S., R.94W., 6TH P.M., MESA COUNTY, CO  
**ACCESS ROAD CROSS SECTIONS 1 OF 2**



NOTE: VERTICAL SCALE 1" = 20'



REVISION		
NO.	1	NO CHANGES
DATE	8/13/24	
DRAFTED JRH		
REVIEWED MJK		
PROJECT NUMBER 2307-01465.2		
ISSUE DATE 8/15/24		

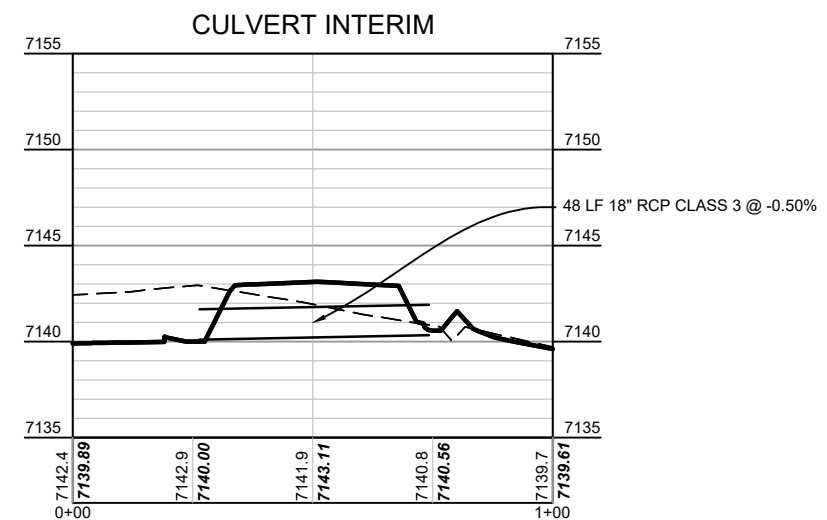
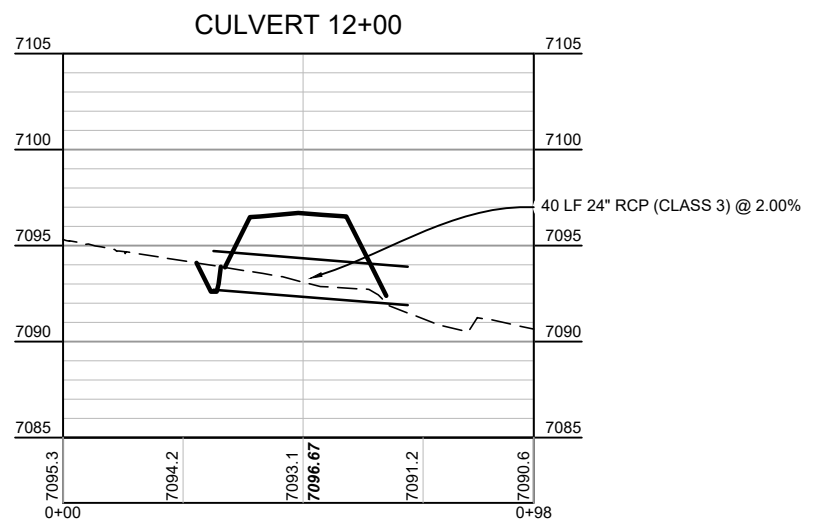
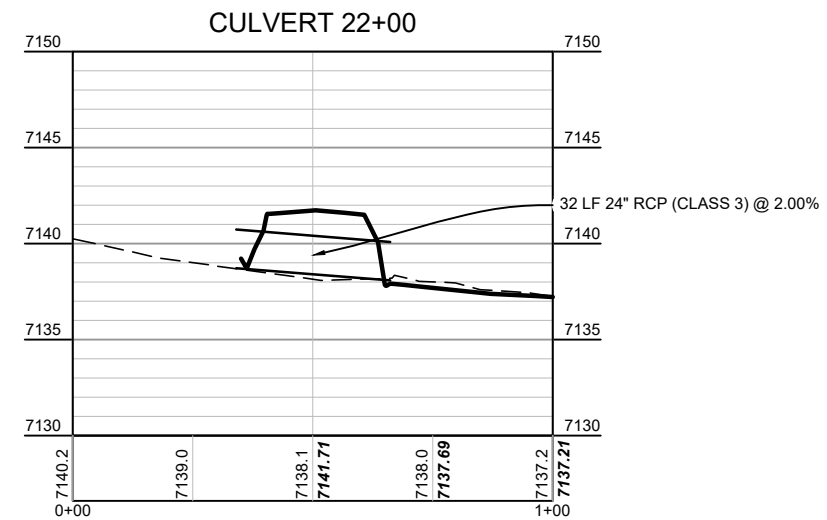
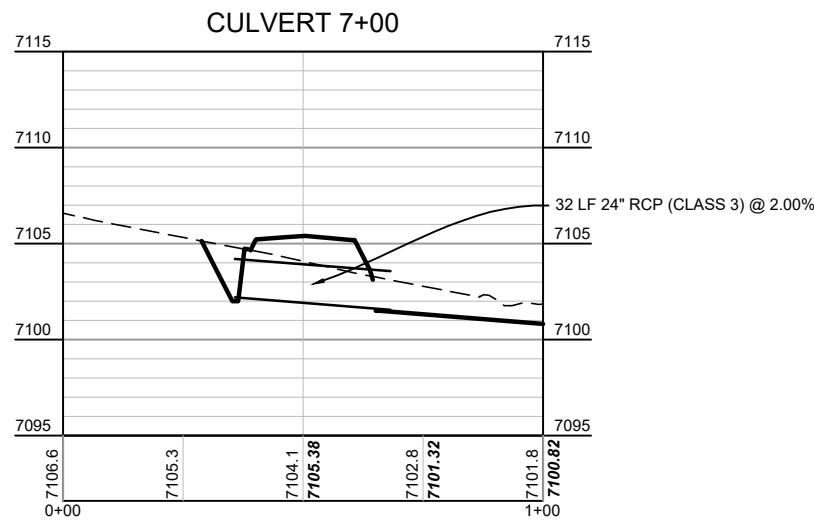
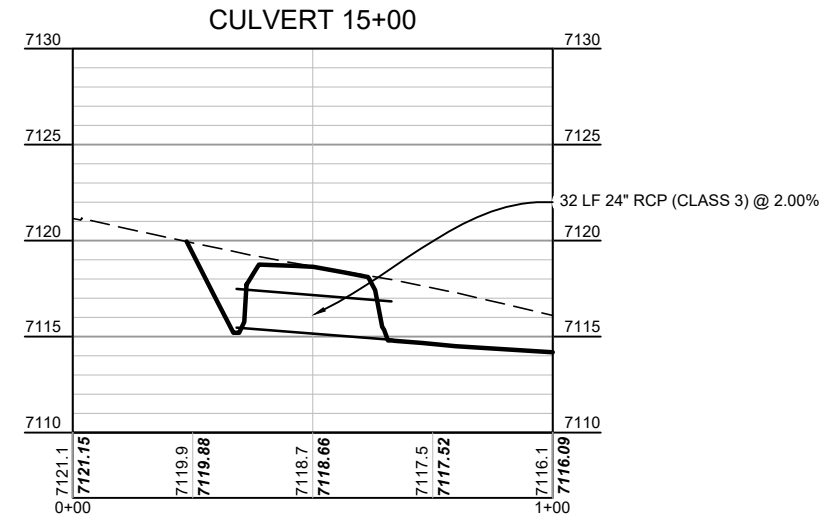
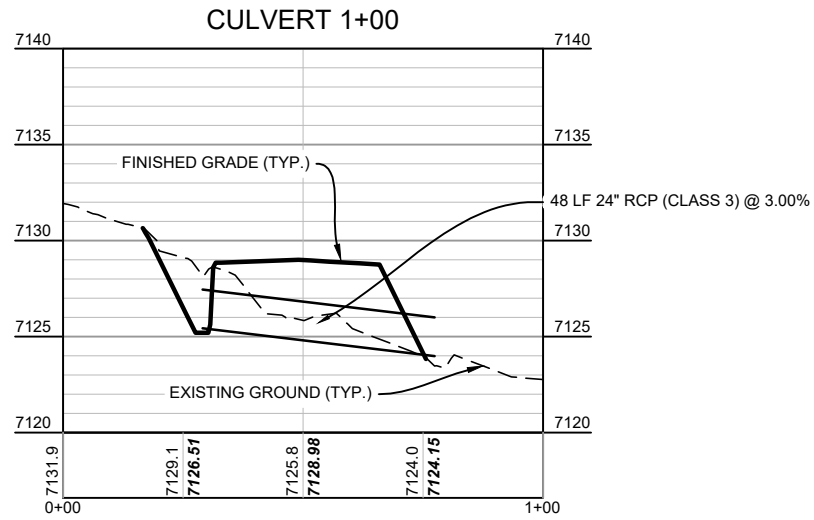
**CCR 0994-23-02 WELL PAD DESIGN**

LARAMIE ENERGY, LLC

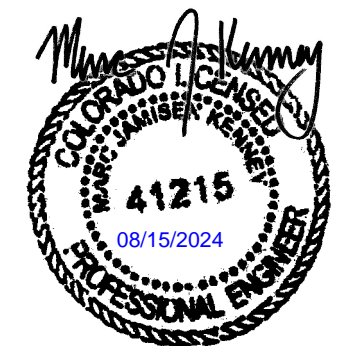
NW1/4 SECTION 23, T.9S., R.94W., 6TH P.M., MESA COUNTY, CO

**ACCESS ROAD CROSS SECTIONS 2 OF 2**

SHEET  
5.02



NOTE: VERTICAL SCALE 1" = 10'



NO.	DATE	REVISION
1	8/13/24	NO CHANGES
DRAFTED <b>JRH</b> REVIEWED <b>MJK</b> PROJECT NUMBER <b>2307-01465.2</b> ISSUE DATE <b>8/15/24</b>		

**CCR 0994-23-02 WELL PAD DESIGN**  
 LARAMIE ENERGY, LLC  
 NW/4 OF SECTION 23, T.9S., R.94W., 6TH P.M., MESA COUNTY, CO  
**CULVERT CROSS SECTIONS**



**STORMWATER VOLUME**  
 DESIGN STORM = 2-YEAR 24-HOUR  
 NOAA POINT PRECIP. = 1.28 INCHES  
 REQUIRED STORAGE VOLUME = 35,532 CUBIC FEET\*  
 (1.28 IN / 12 IN/FT \* 7.5 AC \* 43560 SQFT/AC)  
 (\* ASSUMES ZERO LOSS (E.G., INFILTRATION/EVAPORATION))  
 VOLUME PROVIDED = 44,037 CUBIC FEET\*\*  
 (\*\* INCLUDES FREEBOARD VOLUME)

**STORMWATER BASIN DIRT BALANCE (IN CUBIC YARDS)**  
 BASIN: CUT = 2,138 / FILL = 56; NET = 2,082 CY (CUT)

**PAD VOLUME SUMMARY**  
 CUT FACTOR = 1.0  
 CUT VOLUME = 32,444 CY (INCLUDES STORMWATER BASIN)  
 FILL FACTOR = 1.15 (COMPACTION)  
 FILL VOLUME = 31,133 CY  
 NET = 1,311 CY (CUT)

**TOPSOIL VOLUME**  
 EXISTING TOPSOIL DEPTH = 6.00 INCHES\*  
 (\*AREA WEIGHTED AVERAGE DEPTH)  
 AREA OF DISTURBANCE = 7.5 (ACRES)  
 WORKING PAD SURFACE = 4.3 (ACRES)  
 TOPSOIL STOCKPILE VOLUME = 6,190 CY

**NOTES**

1. CONTOUR INTERVAL IS 2 FEET.
2. EXISTING TOPOGRAPHY AND FEATURE DATA WERE COLLECTED BY WASATCH SURVEYING.
3. WELL PAD DIMENSIONS AND EQUIPMENT LAYOUTS PROVIDED BY LARAMIE ENERGY, LLC.

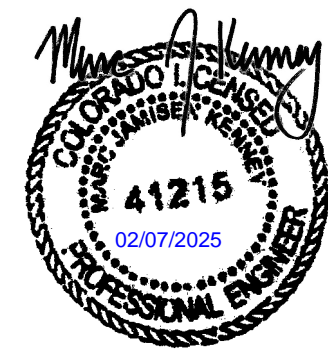
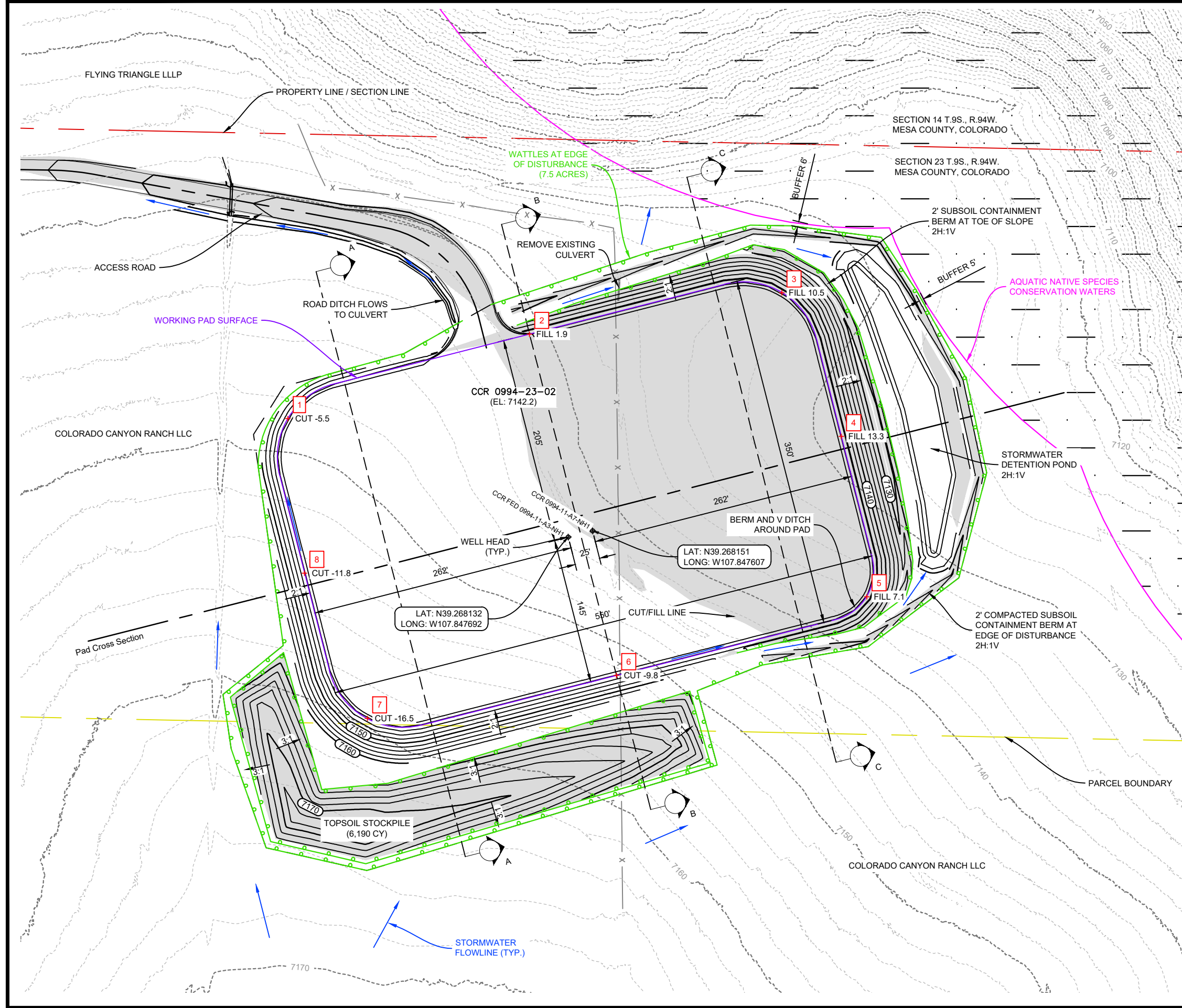
LEGEND	
	WATTLE
	EXISTING FENCE
	FILL
	HIGH PRIORITY HABITAT
	PARCEL BOUNDARY
	SECTION LINE

NO.	DATE	REVISION
1	8/13/24	REVISED LABELS/COLORS AND ROAD DITCH
2	2/6/25	REVISED STOCKPILE LABEL

DRAFTED	JRH
REVIEWED	MJK
PROJECT NUMBER	2307-01465.2
ISSUE DATE	8/15/24

**CCR 0994-23-02 WELL PAD DESIGN**  
 LARAMIE ENERGY, LLC  
 NWNE OF SECTION 23, T.9S., R.94W., 6TH P.M., MESA COUNTY, CO

SHEET  
7.01





NO.	DATE	REVISION
1	8/13/24	REVISED LABELS/COLORS AND ROAD DITCH
2	2/6/25	REVISED STOCKPILE LABEL AND EQUIPMENT LAYOUT

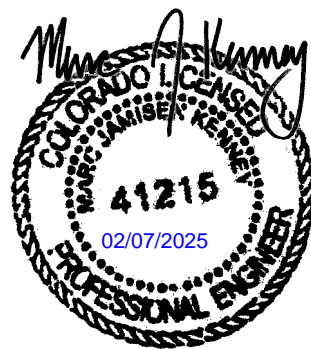
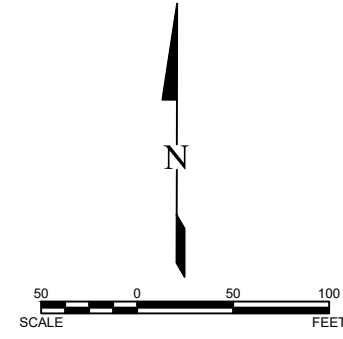
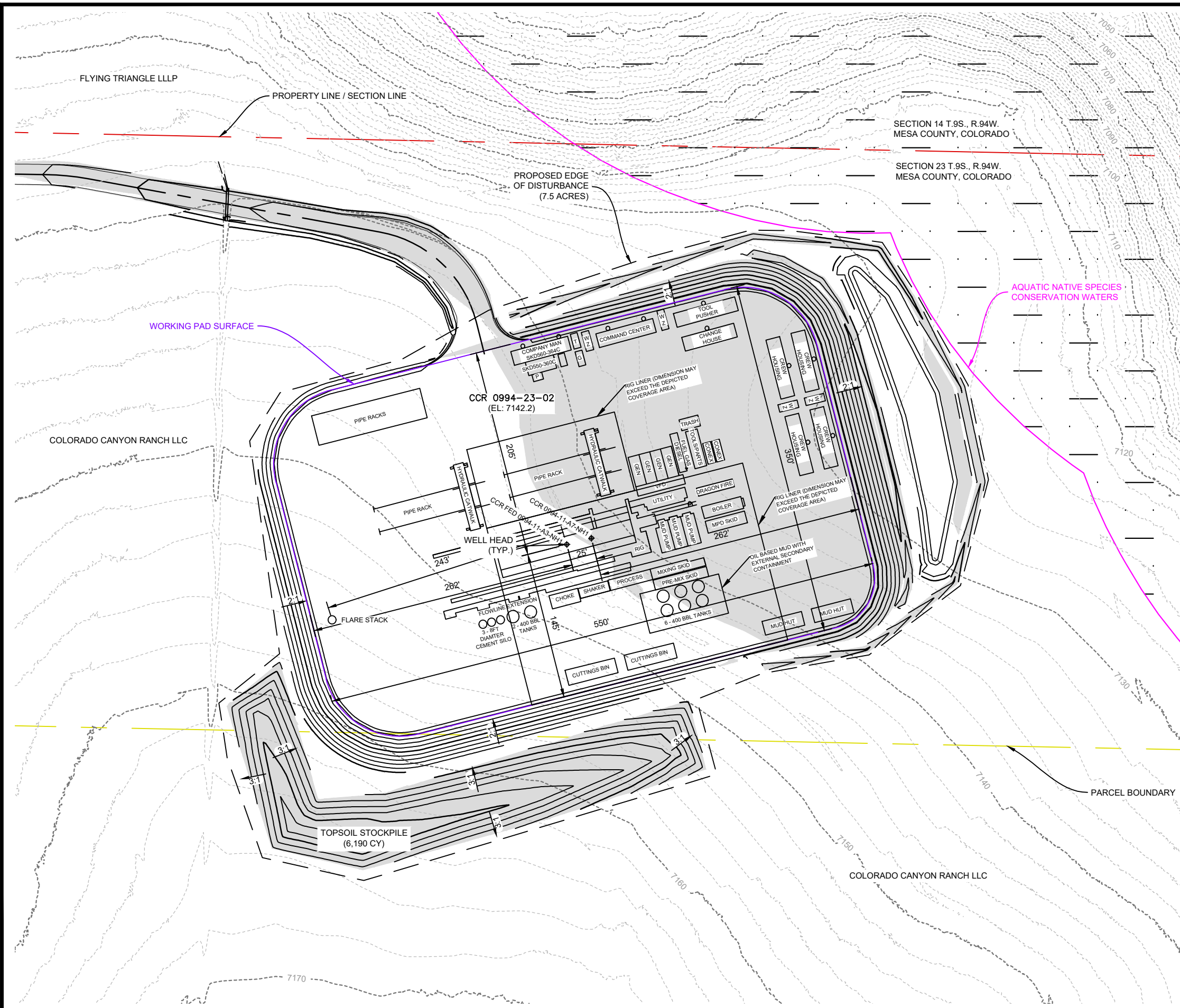
DRAFTED	JRH
REVIEWED	MJK
PROJECT NUMBER	2307-01465.2
ISSUE DATE	8/15/24

**CCR 0994-23-02 WELL PAD DESIGN**

LARAMIE ENERGY, LLC  
 NWNE OF SECTION 23, T.9S., R.94W., 6TH P.M., MESA COUNTY, CO

**RIG LAYOUT**

SHEET  
7.02



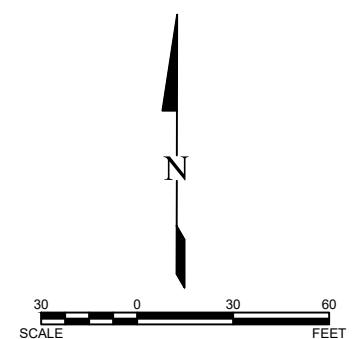
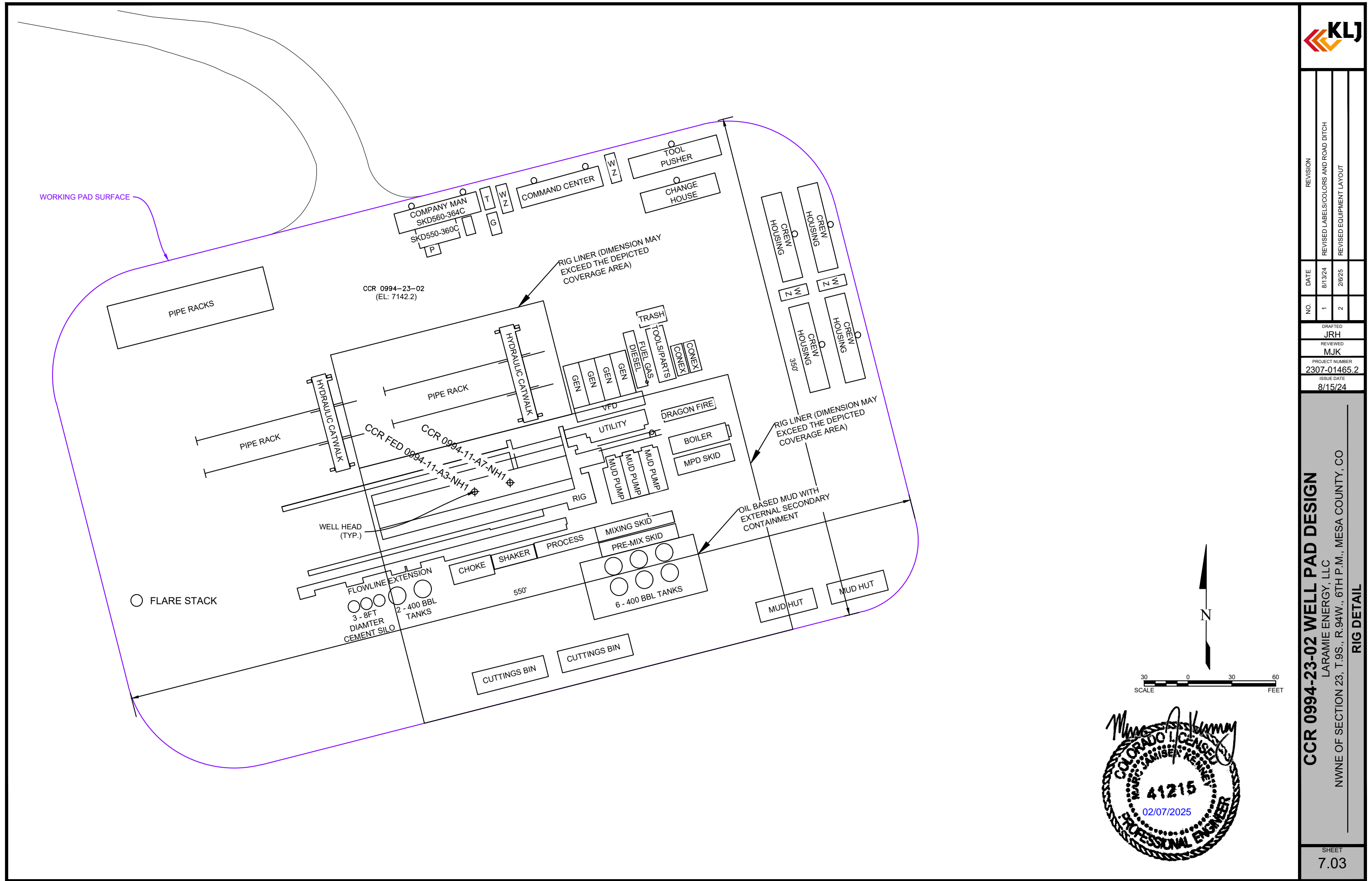
NO.	DATE	REVISION
1	8/13/24	REVISED LABELS/COLORS AND ROAD DITCH
2	2/6/25	REVISED EQUIPMENT LAYOUT

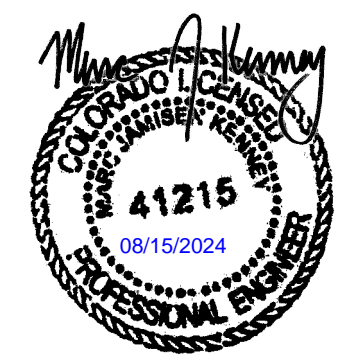
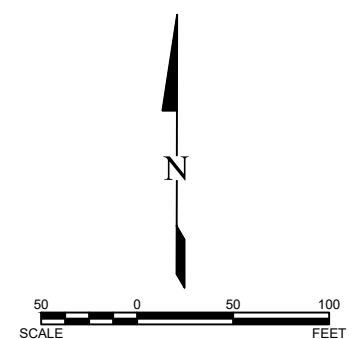
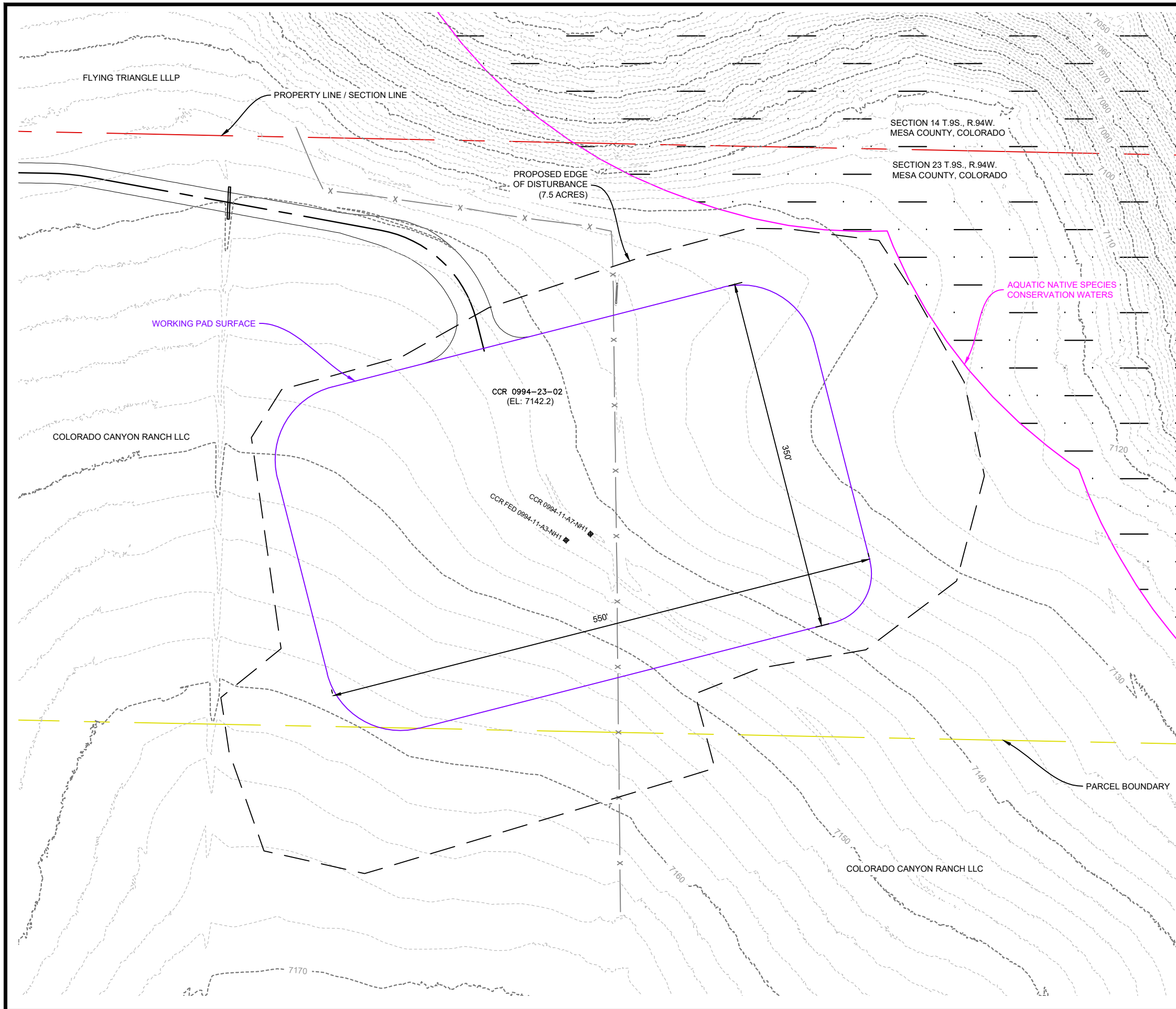
DRAFTED  
**JRH**  
 REVIEWED  
**MJK**  
 PROJECT NUMBER  
**2307-01465.2**  
 ISSUE DATE  
**8/15/24**

**CCR 0994-23-02 WELL PAD DESIGN**  
 LARAMIE ENERGY, LLC  
 NW/4 OF SECTION 23, T.9S., R.94W., 6TH P.M., MESA COUNTY, CO

SHEET  
**7.03**

RIG DETAIL





NO.	1	REVISION	
DATE	8/13/24	REVISED LABELS/COLORS	
DRAFTED		JRH	
REVIEWED		MJK	
PROJECT NUMBER		2307-01465.2	
ISSUE DATE		8/15/24	

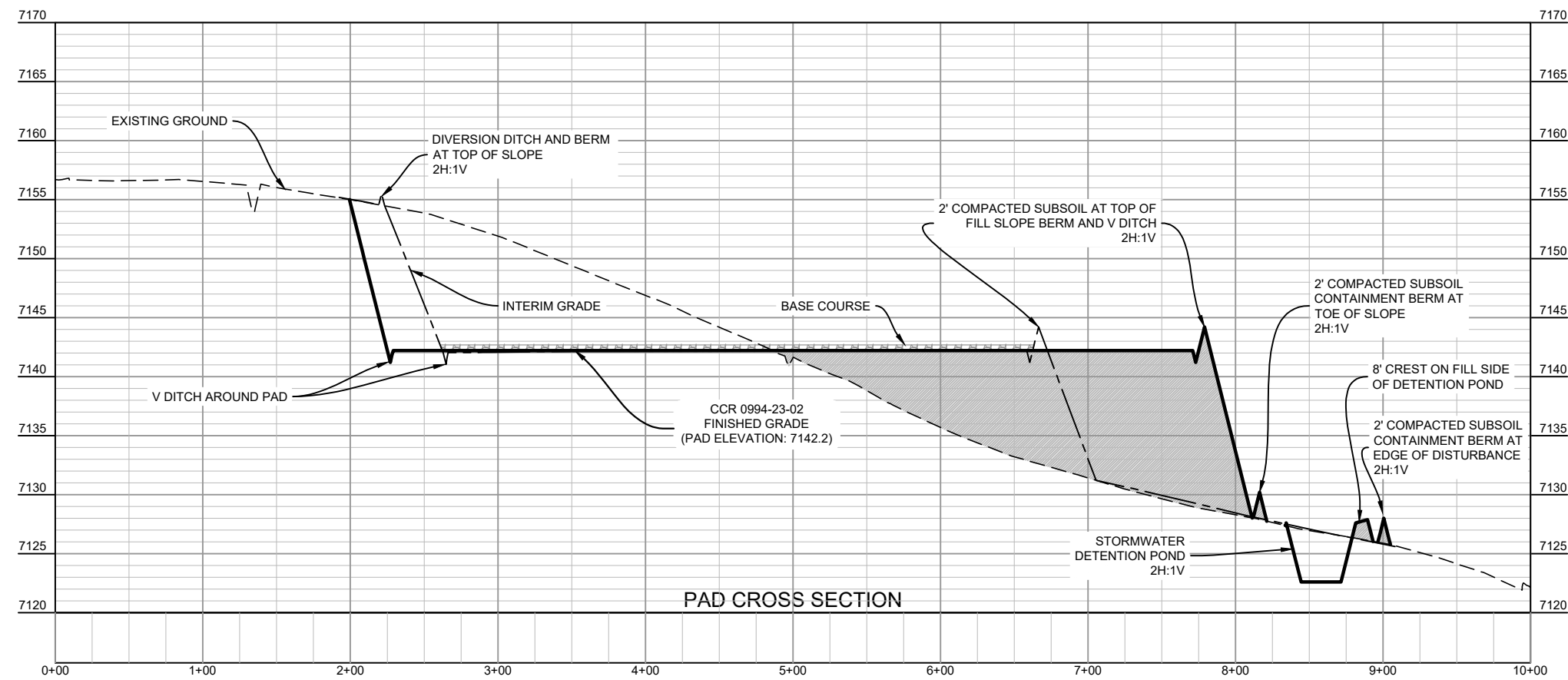
**CCR 0994-23-02 WELL PAD DESIGN**  
 LARAMIE ENERGY, LLC  
 NW/4E OF SECTION 23, T.9S., R.94W., 6TH P.M., MESA COUNTY, CO  
**PRE-CONSTRUCTION CONTOURS**

SHEET  
**7.04**

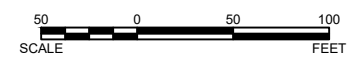


NO.	1	DATE	8/13/24	REVISION	NO CHANGES
-----	---	------	---------	----------	------------

DRAFTED	JRH
REVIEWED	MJK
PROJECT NUMBER	2307-01465.2
ISSUE DATE	8/15/24

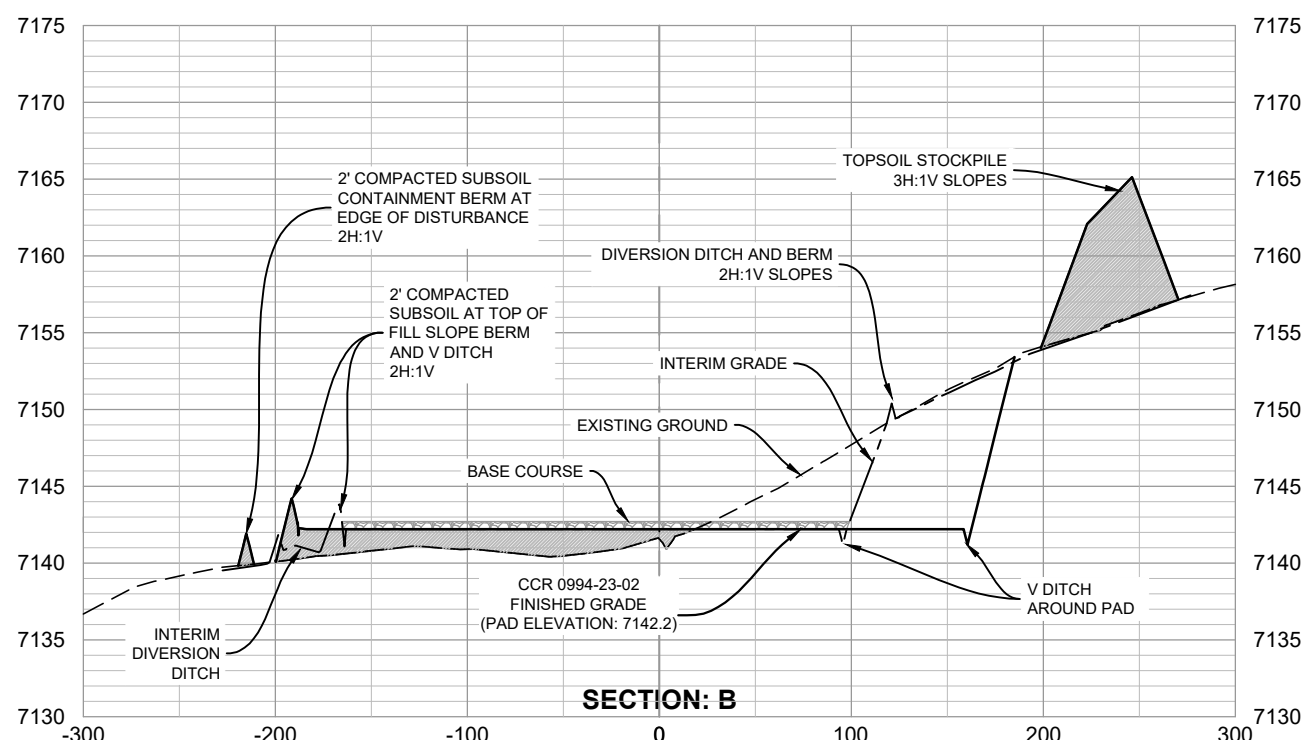
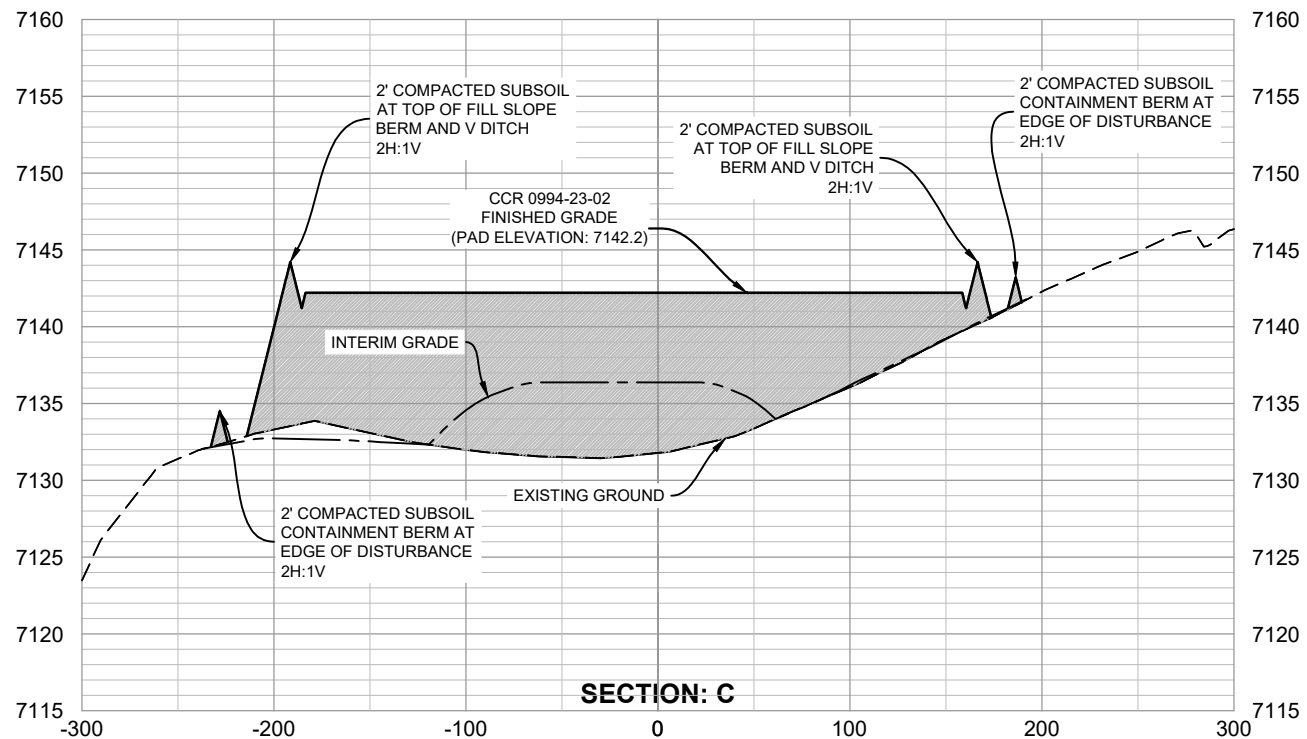
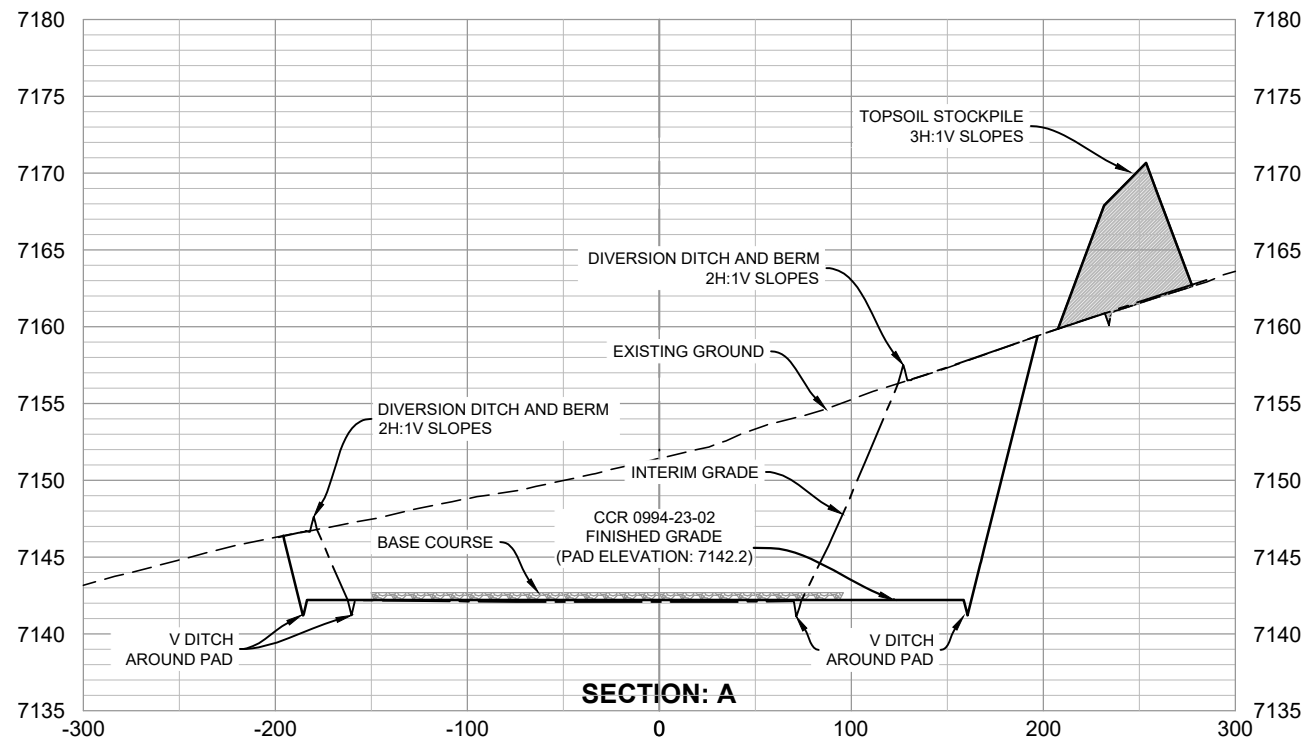


NOTE: VERTICAL SCALE 1" = 5'

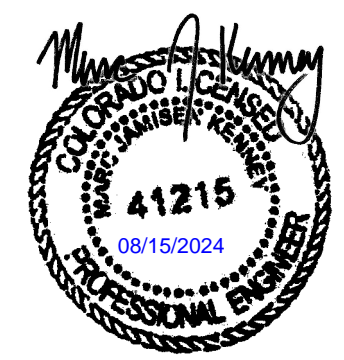
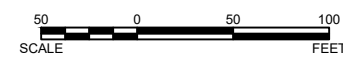


**CCR 0994-23-02 WELL PAD DESIGN**  
 LARAMIE ENERGY, LLC  
 NW/4E OF SECTION 23, T.9S., R.94W., 6TH P.M., MESA COUNTY, CO  
**PAD CROSS SECTIONS 1 OF 2**

SHEET  
**8.01**



NOTE: VERTICAL SCALE 1" = 5'



REVISION			
NO.	1		NO CHANGES
DATE	8/13/24		
DRAFTED JRH			
REVIEWED MJK			
PROJECT NUMBER 2307-01465.2			
ISSUE DATE 8/15/24			

**CCR 0994-23-02 WELL PAD DESIGN**  
 LARAMIE ENERGY, LLC  
 NW/4E OF SECTION 23, T.9S., R.94W., 6TH P.M., MESA COUNTY, CO  
**PAD CROSS SECTIONS 2 OF 2**



NOTES

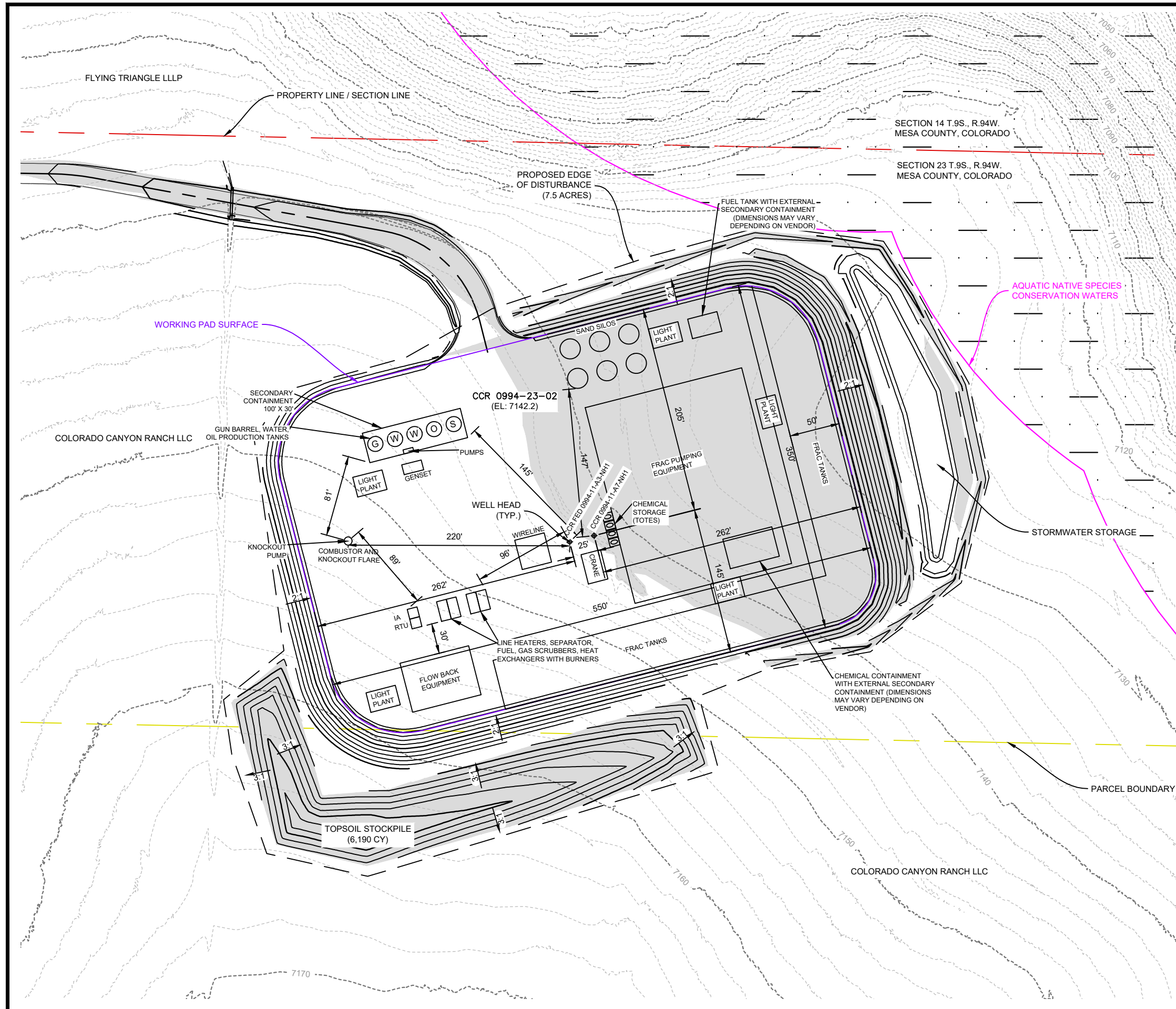
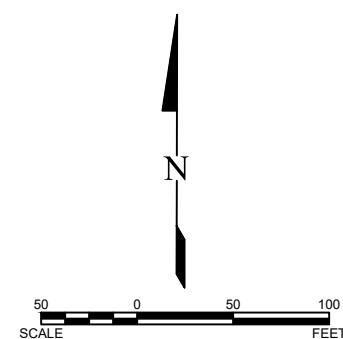
1. EXHIBIT DEPICTS PRELIMINARY FRAC AND FLOWBACK EQUIPMENT LAYOUT. EQUIPMENT AND LAYOUT ARE SUBJECT TO CHANGE DEPENDING ON EQUIPMENT AVAILABILITY AND SITE CONDITIONS. THIS INCLUDES FUEL TANK VOLUMES AND OTHER CHEMICAL STORAGE WHICH VARY BY VENDOR.
2. SIXTY-FOUR (64) FRAC TANKS. CAPACITY PER FRAC TANK: 500 BBLs. TOTAL FRAC TANK CAPACITY 32,000 BBLs.
3. EQUIPMENT LOCATED WITHIN THE "FRAC EQUIPMENT" ENVELOPE: HYDRAULIC STIMULATION CONTROL TRAILER, DIESEL FRAC PUMPS, BLENDER TRUCK(S), CHARGE PUMP, AND TEMPORARY CHEMICAL STORAGE
4. EACH LIGHT PLANT IS A SELF-CONTAINED UNIT WITH A GENERATOR AND AUXILIARY POWER SOURCE.
5. FLOWBACK SUPPORT TRAILER IS LOCATED WITHIN "FLOWBACK SEPARATORS" ENVELOPE.
6. PLEASE REFER TO THE CONSTRUCTION LAYOUT DRAWING FOR STORMWATER CONTROL MEASURES.

ONSITE TANKS	NUMBER OF TANKS	VOLUME (BARRELS)
OIL TANKS	1	400
PRODUCED WATER TANKS	2	800
GUNBARREL TANK	1	400
SAND TANK	1	400

NO.	DATE	REVISION
1	8/13/24	REVISED LABELS/COLORS AND ROAD DITCH
2	2/6/25	REVISED LABELS, NOTES, AND EQUIPMENT LAYOUT

**LEGEND**

	FILL
	GUN
	WATER
	OIL
	SAND



**CCR 0994-23-02 WELL PAD DESIGN**  
 LARAMIE ENERGY, LLC  
 NWNE OF SECTION 23, T.9S., R.94W., 6TH P.M., MESA COUNTY, CO  
**COMPLETIONS LAYOUT**



**INTERIM PAD VOLUME SUMMARY**

CUT FACTOR = 1.0  
CUT VOLUME = 18,195 CY  
FILL FACTOR = 1.0  
FILL VOLUME = 17,723 CY  
NET = 472 CY (CUT)

INTERIM RECLAIM AREA = 5.2 (ACRES)  
ORIGINAL AREA OF DISTURBANCE = 7.5 (ACRES)  
PRODUCTION PAD SURFACE = 2.3 (ACRES)

ROAD LENGTH (BRUSH CREEK RD TO INTERIM PAD) = 2,564 FEET  
ROAD AREA OF DISTURBANCE = 1.9 ACRES  
ROAD RUNNING SURFACE = 1.4 ACRES

LONG-TERM DISTURBANCE = 4.2 ACRES

ON SITE:

**NOTES**

1. CONTOUR INTERVAL IS 2 FEET.
2. EXISTING TOPOGRAPHY AND FEATURE DATA WERE COLLECTED BY WASATCH SURVEYING.
3. WELL PAD DIMENSIONS AND EQUIPMENT LAYOUTS PROVIDED BY LARAMIE ENERGY, LLC.
4. STOCKPILED TOPSOIL WILL BE SPREAD OUT ALONG THE NON-WORKING AREA SURFACE AFTER DRILLING AND COMPLETION OPERATIONS HAVE BEEN COMPLETED. TOPSOIL WILL NOT BE STOCKPILED DURING PRODUCTION OPERATIONS.
5. APPROXIMATELY 1,850 CY OF STORED TOPSOIL WILL BE USED FOR FINAL RECLAMATION.

ONSITE TANKS	NUMBER OF TANKS	VOLUME (BARRELS)
OIL TANKS	1	400
PRODUCED WATER TANKS	2	800
GUNBARREL TANK	1	400
SAND TANK	1	400

NO.	DATE	REVISION
1	8/13/24	REVISED LABELS/COLORS
2	2/6/25	REVISED NOTES AND EXISTING CONTOURS

DRAFTED	JRH
REVIEWED	MJK
PROJECT NUMBER	2307-01465.2
ISSUE DATE	8/15/24

**LEGEND**

- REVEGETATED AREA
- SEDIMENT TRAP
- FILL
- GUN
- WATER
- OIL
- SAND

SCALE 0 50 100 FEET

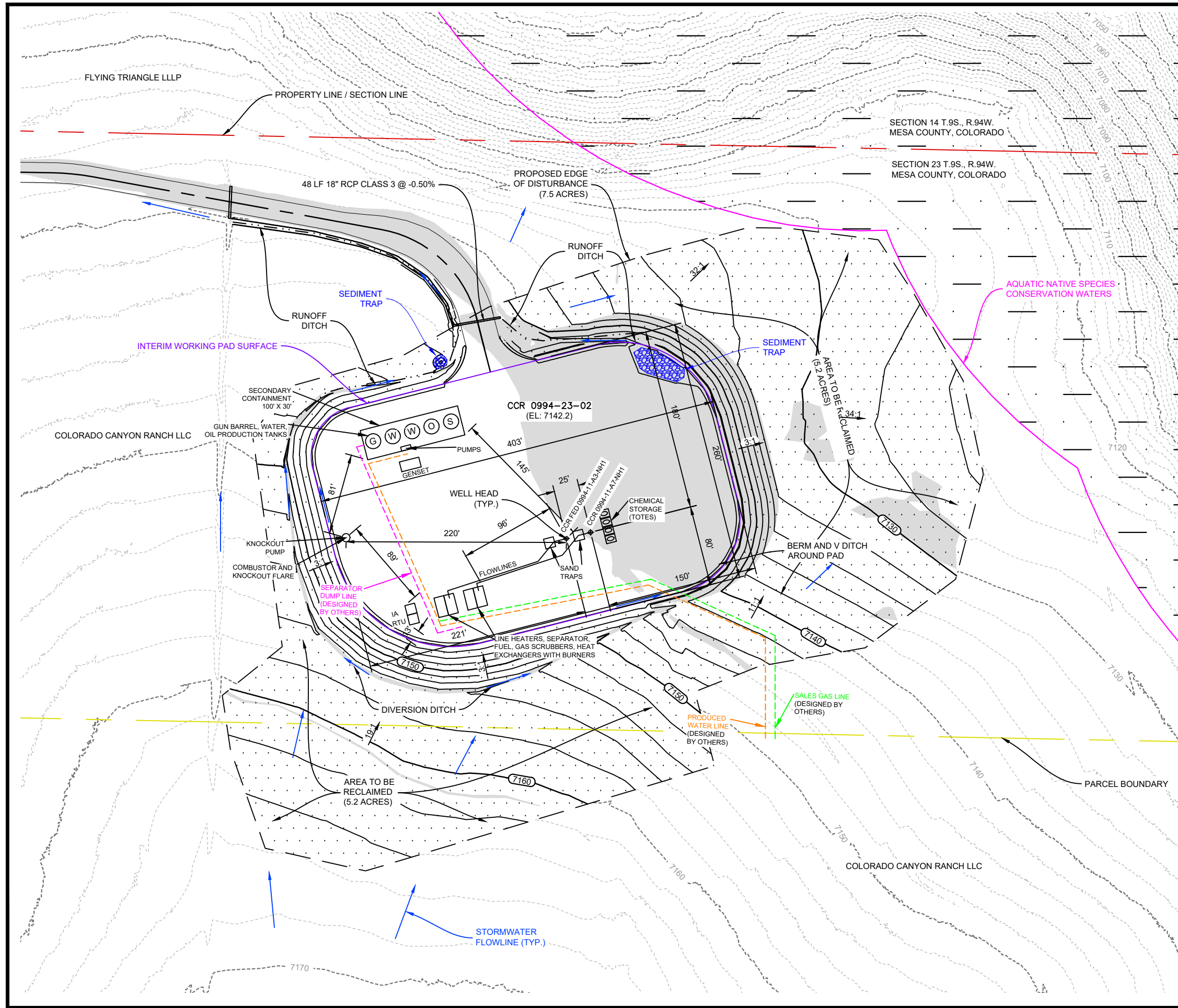
N

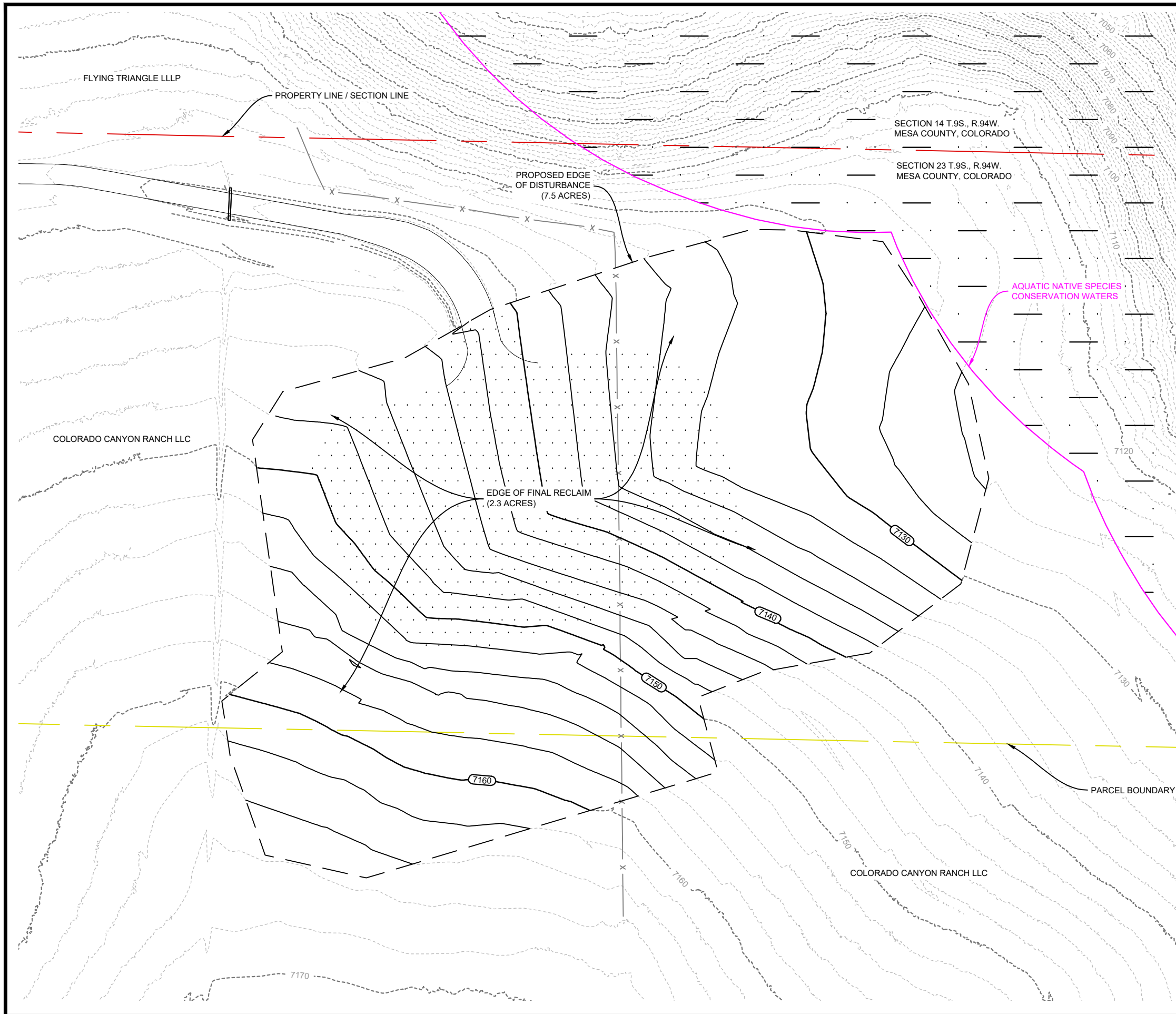


**CCR 0994-23-02 WELL PAD DESIGN**

LARAMIE ENERGY, LLC  
NWNE OF SECTION 23, T.9S., R.94W., 6TH P.M., MESA COUNTY, CO

**PRODUCTION LAYOUT**





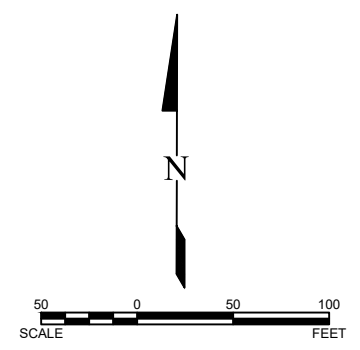
**FINAL RECLAMATION VOLUME SUMMARY**  
 CUT FACTOR = 1.0  
 CUT VOLUME = 12,114 CY  
 FILL FACTOR = 1.0  
 FILL VOLUME = 11,702 CY  
 NET = 412 CY (CUT)

FINAL RECLAIM AREA = 2.3 ACRES

- NOTES**
1. CONTOUR INTERVAL IS 2 FEET.
  2. EXISTING TOPOGRAPHY AND FEATURE DATA WERE COLLECTED BY WASATCH SURVEYING.
  3. WELL PAD DIMENSIONS AND EQUIPMENT LAYOUTS PROVIDED BY LARAMIE ENERGY, LLC.
  4. EXISTING ACCESS ROAD TO BE FULLY RECLAIMED.

**LEGEND**

- REVEGETATED AREA
- SEDIMENT TRAP
- FILL
- GUN
- WATER
- OIL
- SAND



**KLJ**

NO.	DATE	REVISION	REVISED LABELS/COLORS	REVISED NOTES AND EXISTING CONTOURS
1	8/13/24			
2	2/6/25			

DRAFTED  
**JRH**

REVIEWED  
**MJK**

PROJECT NUMBER  
**2307-01465.2**

ISSUE DATE  
**8/15/24**

**CCR 0994-23-02 WELL PAD DESIGN**  
 LARAMIE ENERGY, LLC  
 NWNE OF SECTION 23, T.9S., R.94W., 6TH P.M., MESA COUNTY, CO  
**FINAL RECLAMATION LAYOUT**

SHEET  
**10.01**