

Laramie Energy, LLC  
 Mesa County, CO  
 CCR 0994-23-02  
 CCR FED 0994-11-A3-HN1  
 Permit #2  
 TBD

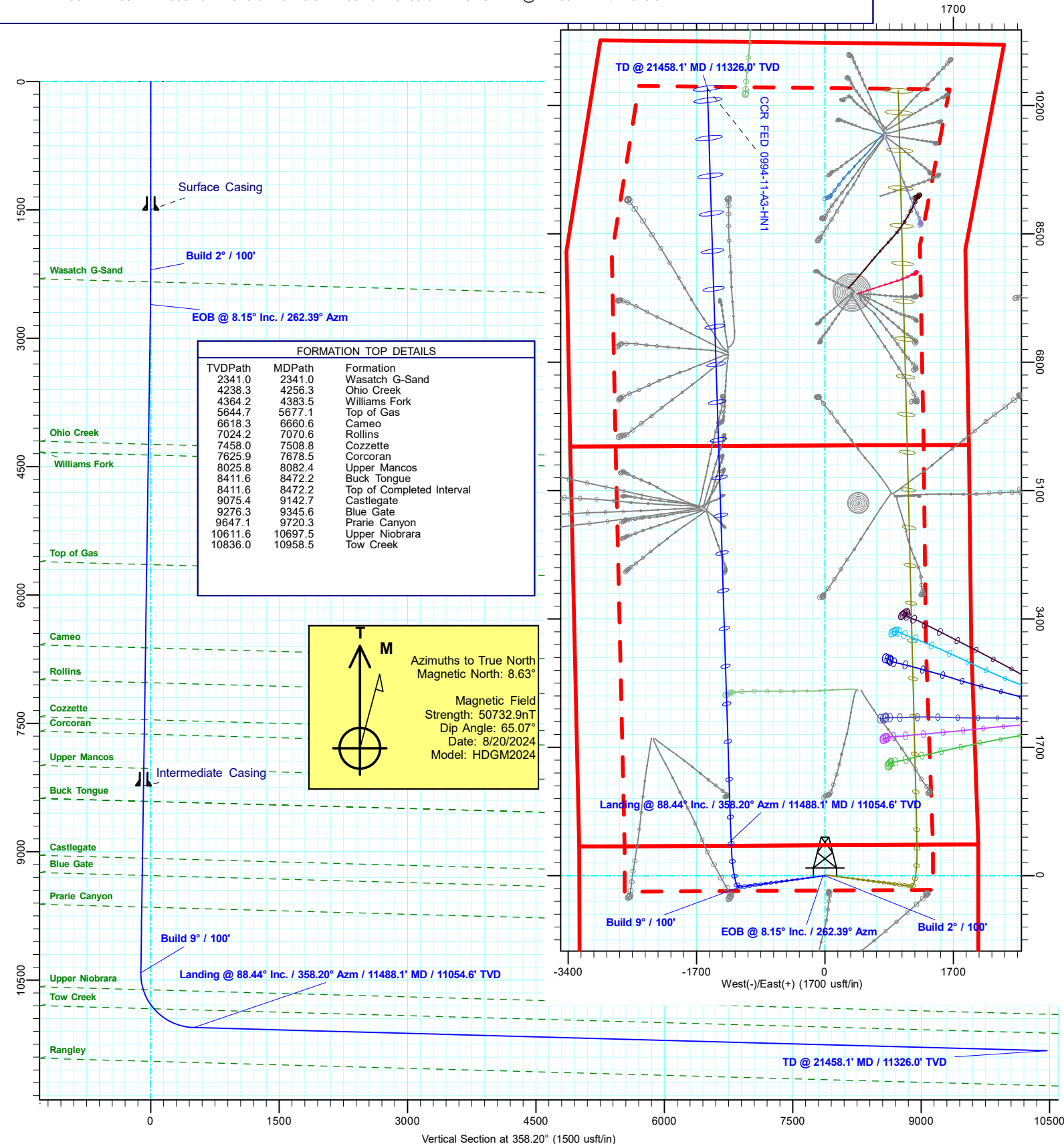
PROJECT DETAILS: Mesa County, CO

Geodetic System: US State Plane 1983  
 Datum: North American Datum 1983  
 Ellipsoid: GRS 1980  
 Zone: Colorado Central Zone  
 System Datum: Mean Sea Level



SECTION DETAILS

MD	Inc	Azi	TVD	+N/-S	+E/-W	V Sect	Departure	Annotation
2200.0	0.00	0.00	2200.0	0.0	0.0	0.0	0.0	Build 2° / 100'
2607.3	8.15	262.39	2605.9	-3.8	-28.6	-2.9	28.9	EOB @ 8.15° Inc. / 262.39° Azm
10496.1	8.15	262.39	10415.2	-151.9	-1136.6	-116.1	1146.7	Build 9° / 100'
11488.1	88.44	358.20	11054.6	464.5	-1244.6	503.3	1785.5	Landing @ 88.44° Inc. / 358.20° Azm / 11488.1' MD / 11054.6' TVD
21458.1	88.44	358.20	11326.0	10425.8	-1557.6	10469.6	11751.8	TD @ 21458.1' MD / 11326.0' TVD



FORMATION TOP DETAILS		
TVDP	MDPath	Formation
2341.0	2341.0	Wasatch G-Sand
4238.3	4256.3	Ohio Creek
4364.2	4383.5	Williams Fork
5644.7	5677.1	Top of Gas
6618.3	6660.6	Cameo
7024.2	7070.6	Rollins
7458.0	7508.8	Cozzette
7625.9	7678.5	Corcoran
8025.8	8082.4	Upper Mancos
8411.6	8472.2	Buck Tongue
8411.6	8472.2	Top of Completed Interval
9075.4	9142.7	Castlegate
9276.3	9345.6	Blue Gate
9647.1	9720.3	Prarie Canyon
10611.6	10697.5	Upper Niobrara
10836.0	10958.5	Tow Creek

**M**

Azimuths to True North  
 Magnetic North: 8.63°

Magnetic Field  
 Strength: 50732.9nT  
 Dip Angle: 65.07°  
 Date: 8/20/2024  
 Model: HDGM2024

Vertical Section at 358.20° (1500 usft/in)