



**RADIAL BOND TOOL
GAMMA RAY
CCL**

Company CIVITAS
Well EDITH ANN 6-8-21
Field WATTENBURG
County WELD
State CO
Country USA

Company CIVITAS
Well EDITH ANN 6-8-21
Field WATTENBURG
County WELD
State CO
Country USA

Location: 40.118240 -105.000848
API #: 05-123-31527
Other Services
Permanent Datum SEC 21 TWP 2N RGE 68W
Log Measured From 13 FT
Drilling Measured From KB
Elevation 4931'
K.B. ---
D.F. ---
G.L. 4931'

Date 05-MAY-2025
Run Number ONE
Depth Driller 8275'
Depth Logger 4905'
Bottom Logged Interval 4900'
Top Log Interval SURFACE
Open Hole Size 7 7/8"
Type Fluid WATER
Density / Viscosity N/A
Max. Recorded Temp. °
Estimated Cement Top N/A
Time Well Ready ON ARRIVAL
Time Logger on Bottom N/A
Equipment Number 7770
Location GREELEY, CO
Recorded By W. Wacker
Witnessed By Hector Terrazas


Borehole Record				Tubing Record			
Run Number	Bit	From	To	Size	Weight	From	To
Casing Record							
Surface String		8 5/8"		24#			Bottom
Prot. String		4 1/2"		11.6#			8268'
Production String							
Liner							

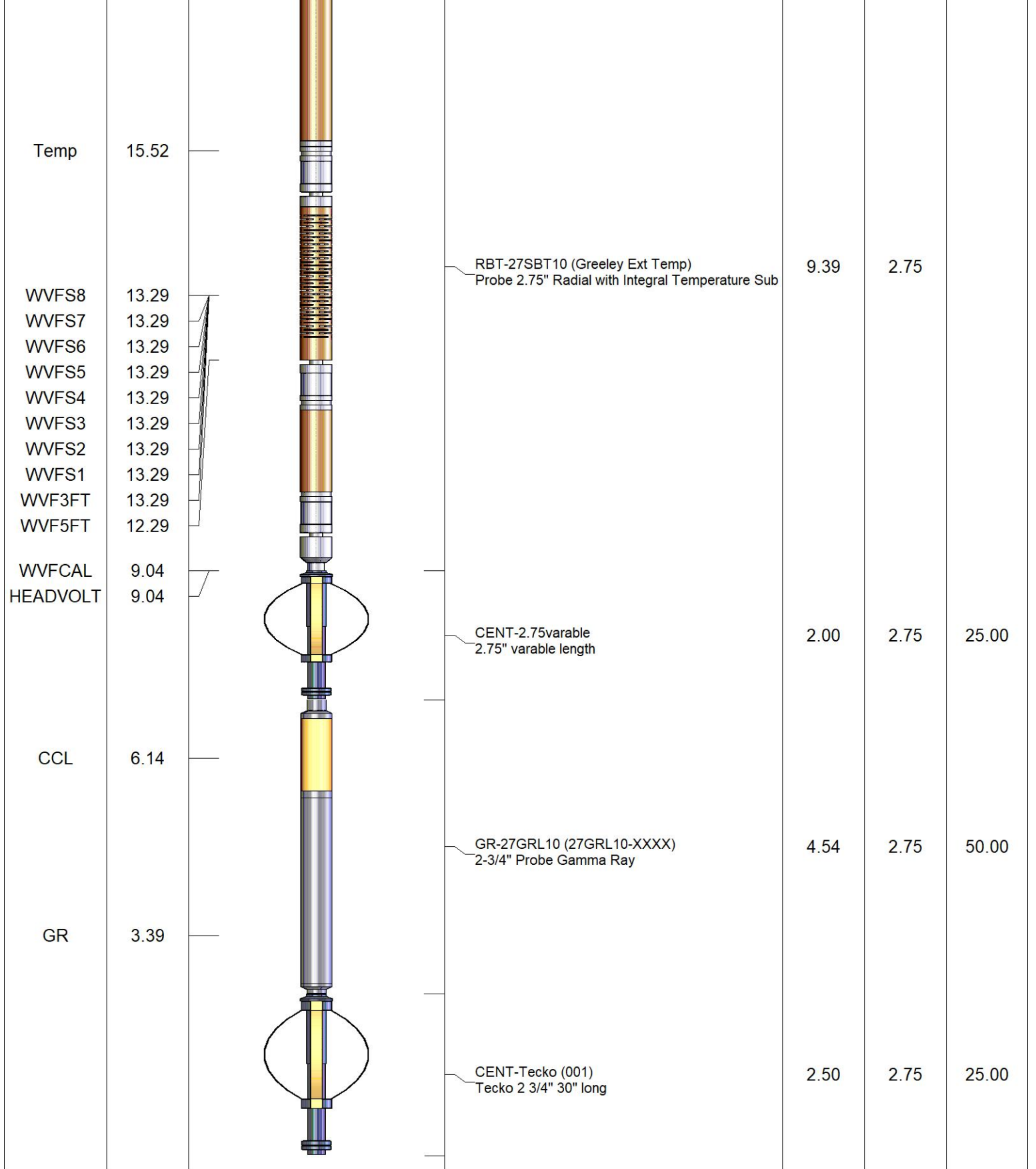
<<< Fold Here >>>

All interpretations are opinions based on inferences from electrical or other measurements and we cannot and do not guarantee the accuracy or correctness of any interpretation, and we shall not, except in the case of gross or willful negligence on our part, be liable or responsible for any loss, costs, damages, or expenses incurred or sustained by anyone resulting from any interpretation made by any of our officers, agents or employees. These interpretations are also subject to our general terms and conditions set out in our current Price Schedule.

Comments

**RAN CBL TO VERIFY CEMENT BOND
WELL LOADED ON ARRIVAL
CORRELATED TO KB AT 13 FT
RECORDED WITH 500 PSI SURFACE INDUCED PRESSURE
LACK OF FLUID INDICATED IN ANNULUS FROM 26 FT TO SURFACE
SECTORS SPREAD DUE TO DEVIATION**

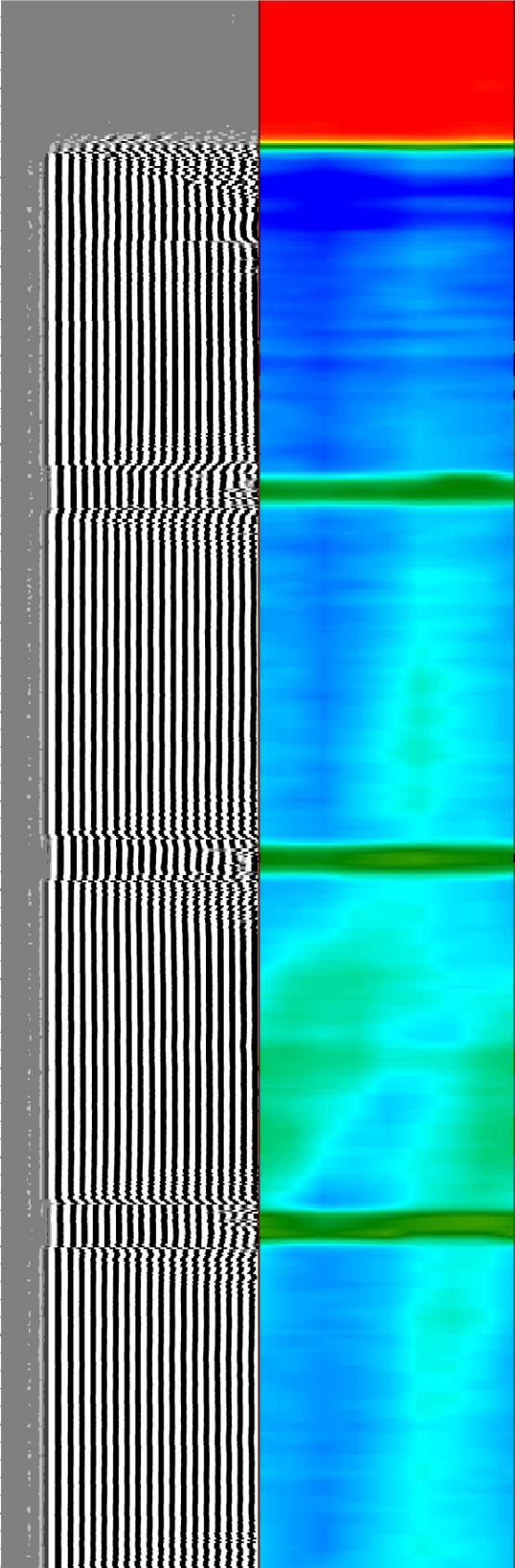
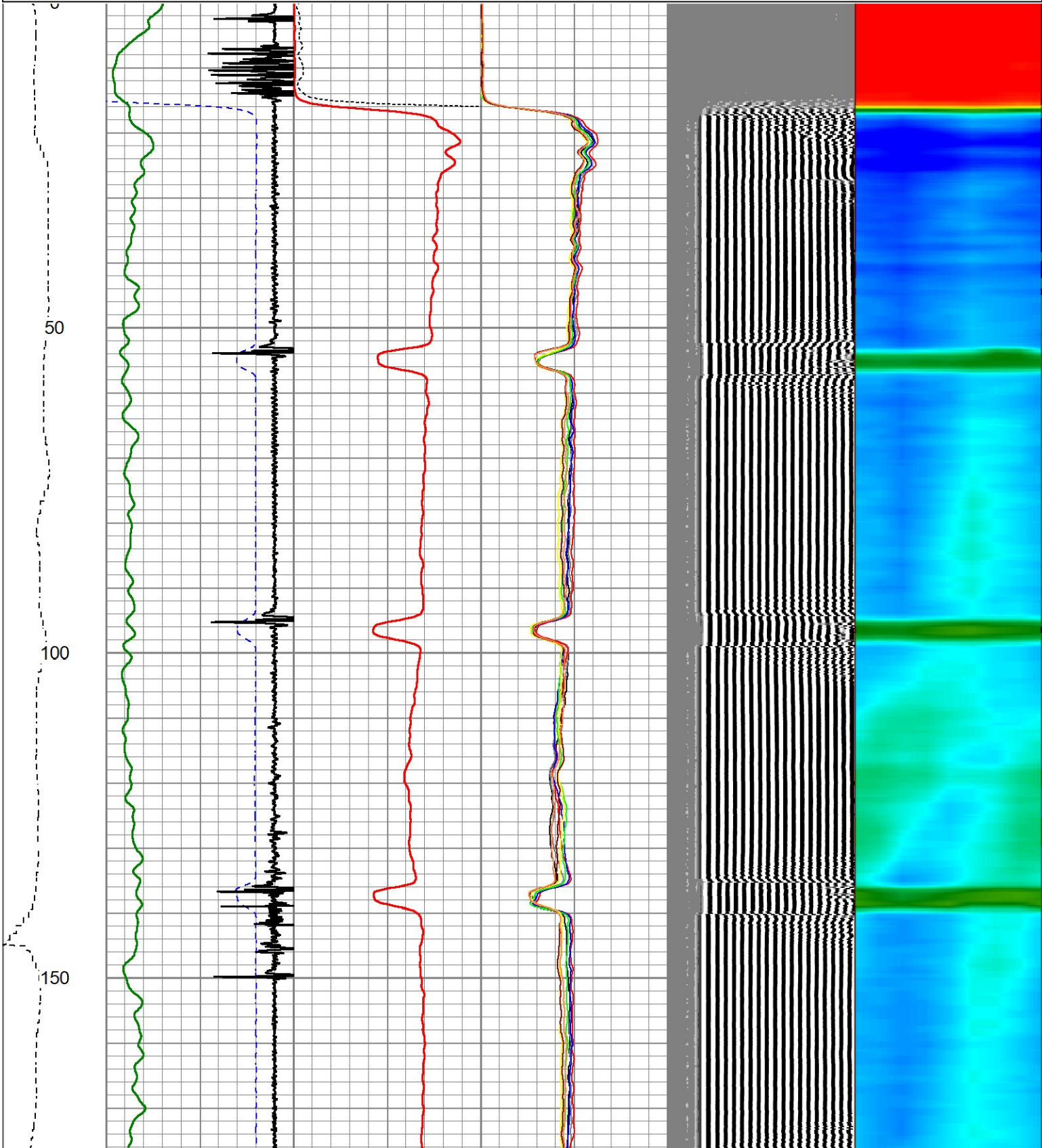
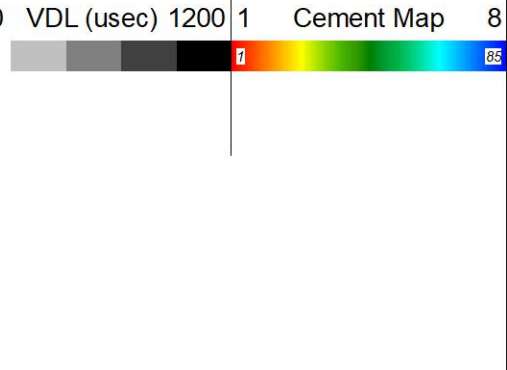
Sensor	Offset (ft)	Schematic	Description	Length (ft)	O.D. (in)	Weight (lb)
HEADVOLT	18.38		CHD-1_7/16_Cabehead 1 7/16 Cablehead	1.00	1.44	5.00

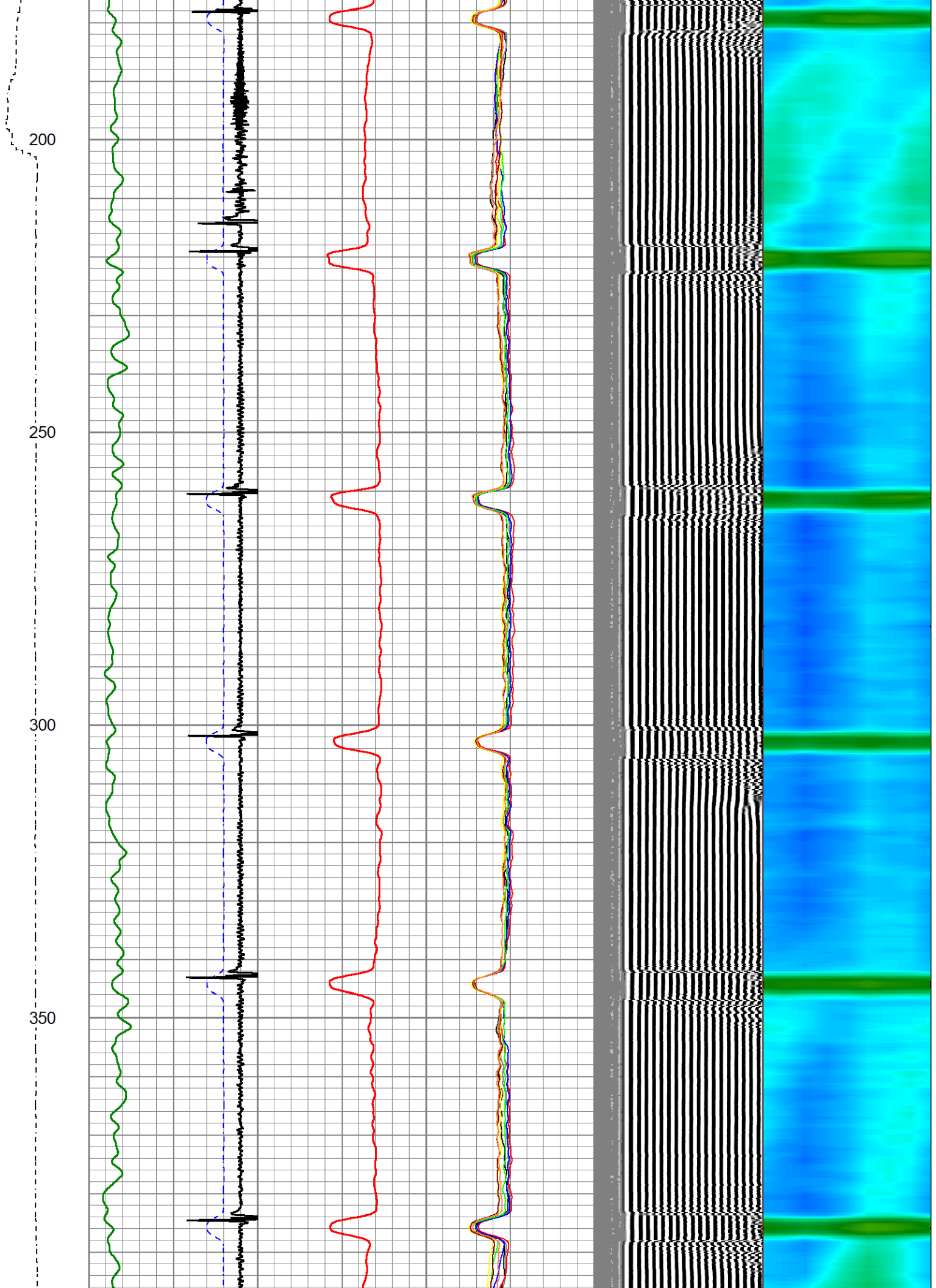


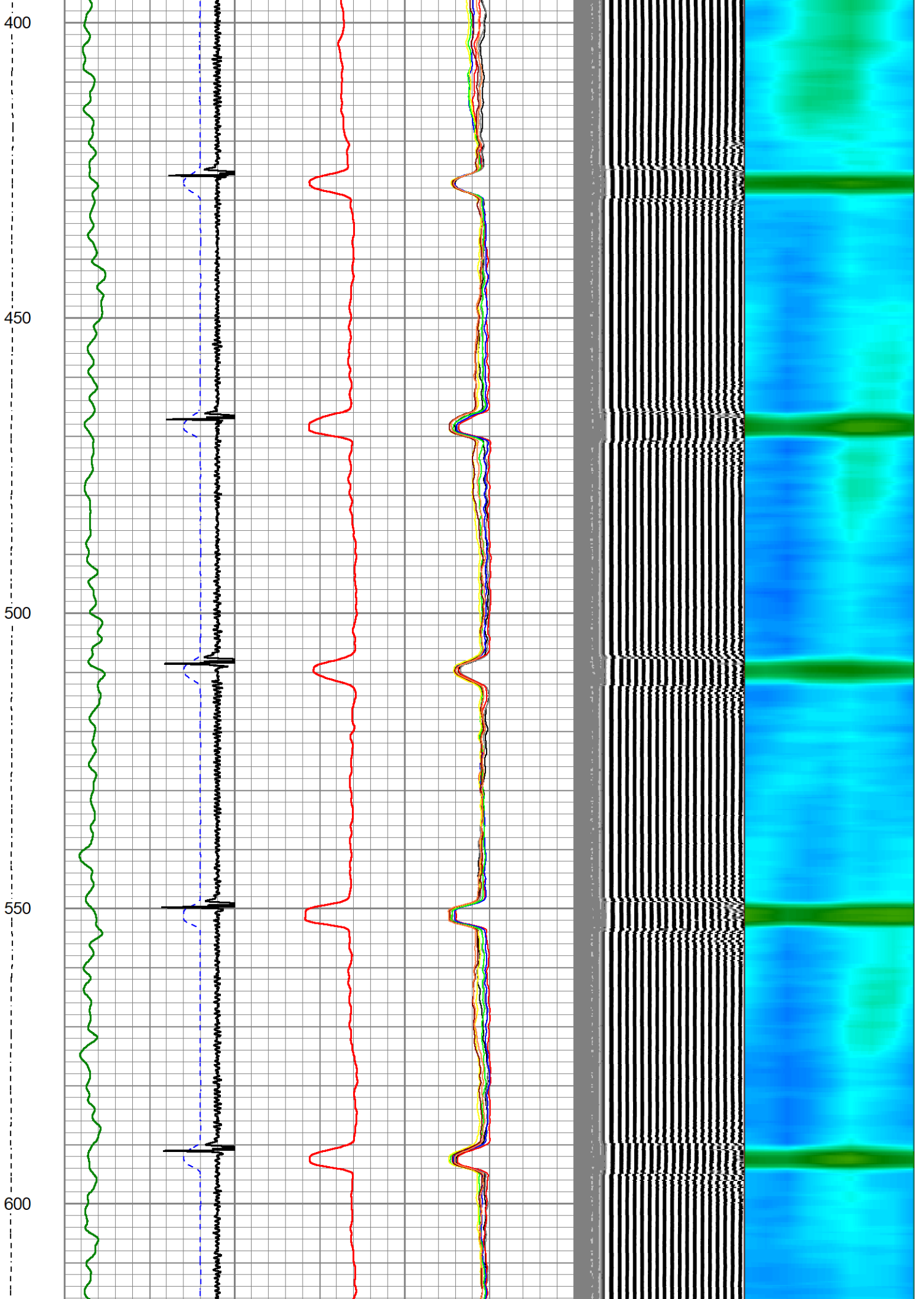
Dataset: 4-civ-edith-ann--6-8-21-rcbl.db: field/well/run1/dp
 Total length: 19.43 ft
 Total weight: 105.00 lb
 O.D.: 2.75 in

Database File 4-civ-edith-ann--6-8-21-rcbl.db
 Dataset Pathname MAIN
 Presentation Format ips_rbtcolorcivitas2
 Dataset Creation Mon May 05 12:59:23 2025
 Charted by Depth in Foot scaled 1:240

LSPD	650	TT (usec)	150	0	AMP (mV)	100	0	AMPS1	150	200	VDL (usec)	1200	1	Cement Map	8
(ft/min)	-9	CCL	1	0	AMPx5 (mV)	20	0	AMPS2	150						
0	-250	GR (GAPI)	200					AMPS3	150						
		250	GR (GAPI)	500				AMPS4	150						
								AMPS5	150						
								AMPS6	150						
								AMPS7	150						
								AMPS8	150						





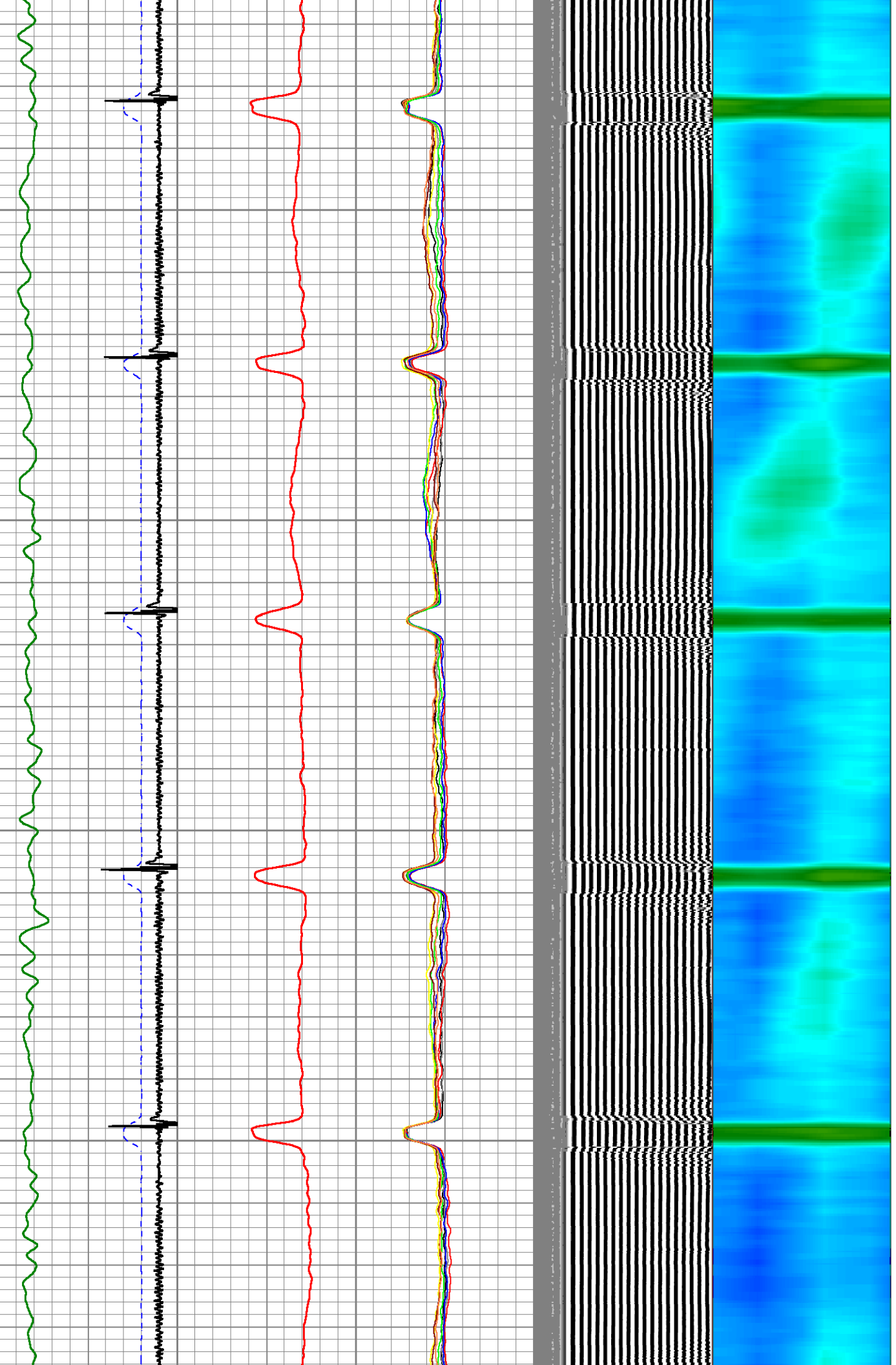


650

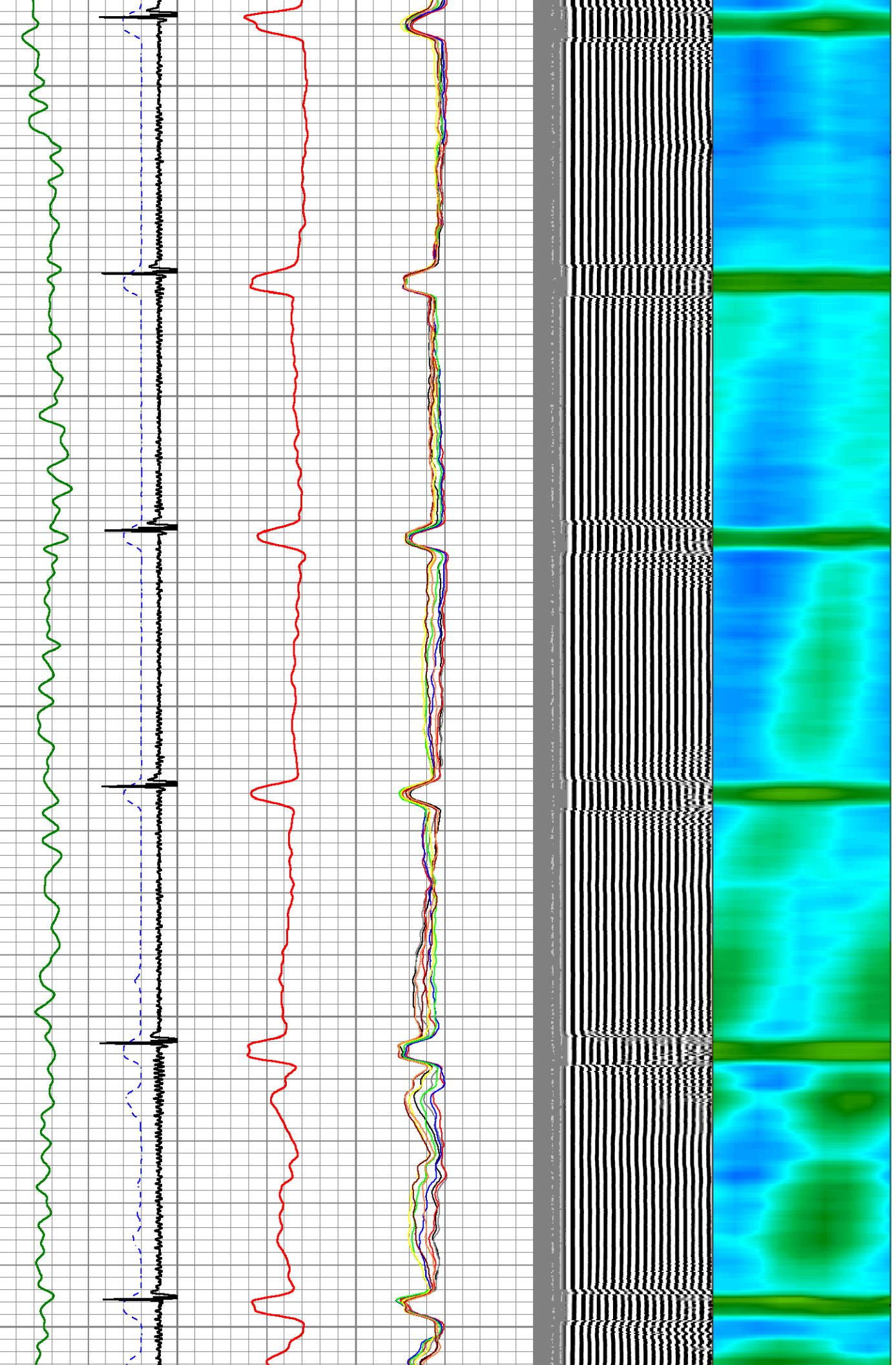
700

750

800



850
900
950
1000
1050

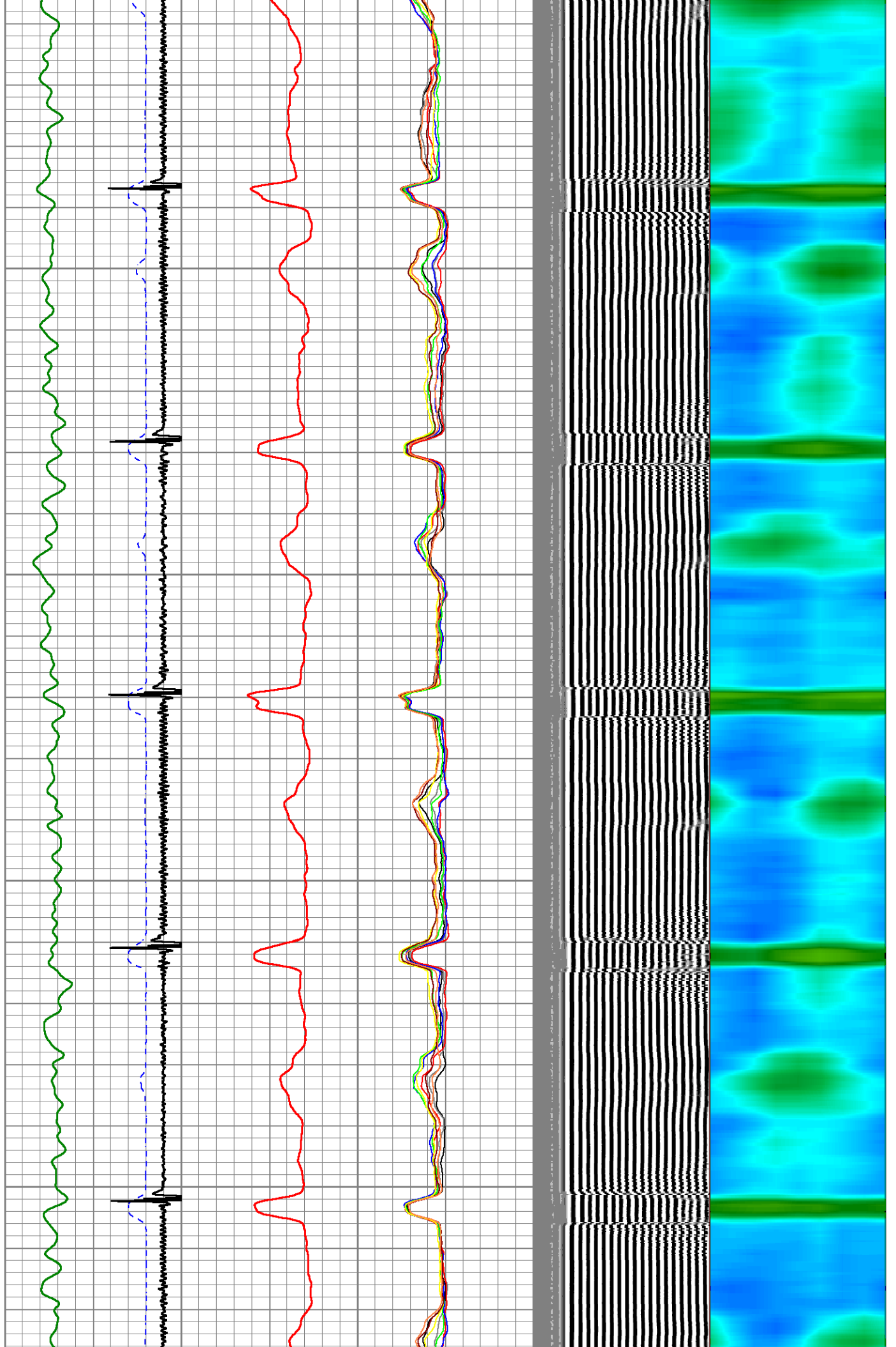


1100

1150

1200

1250

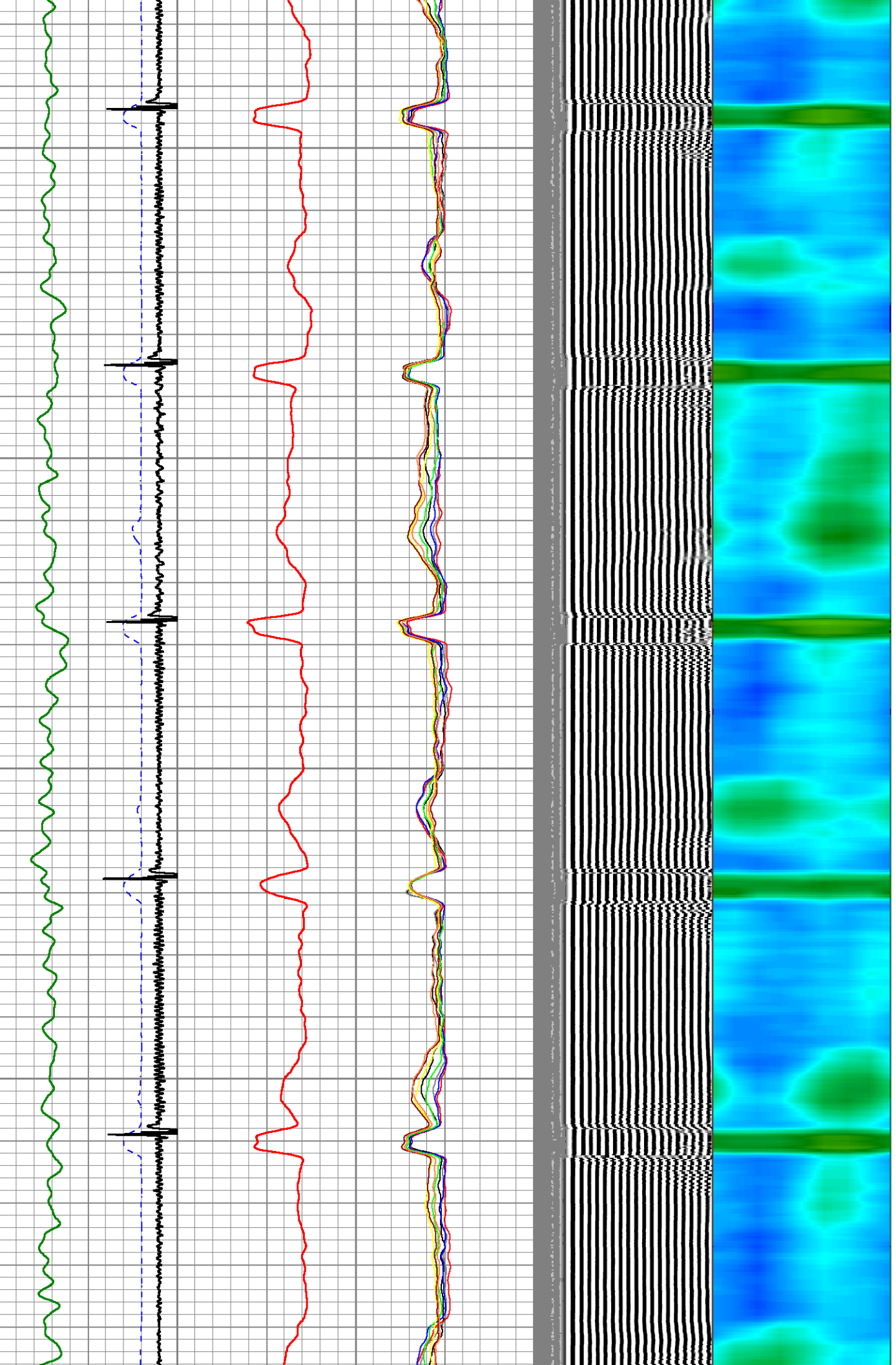


1300

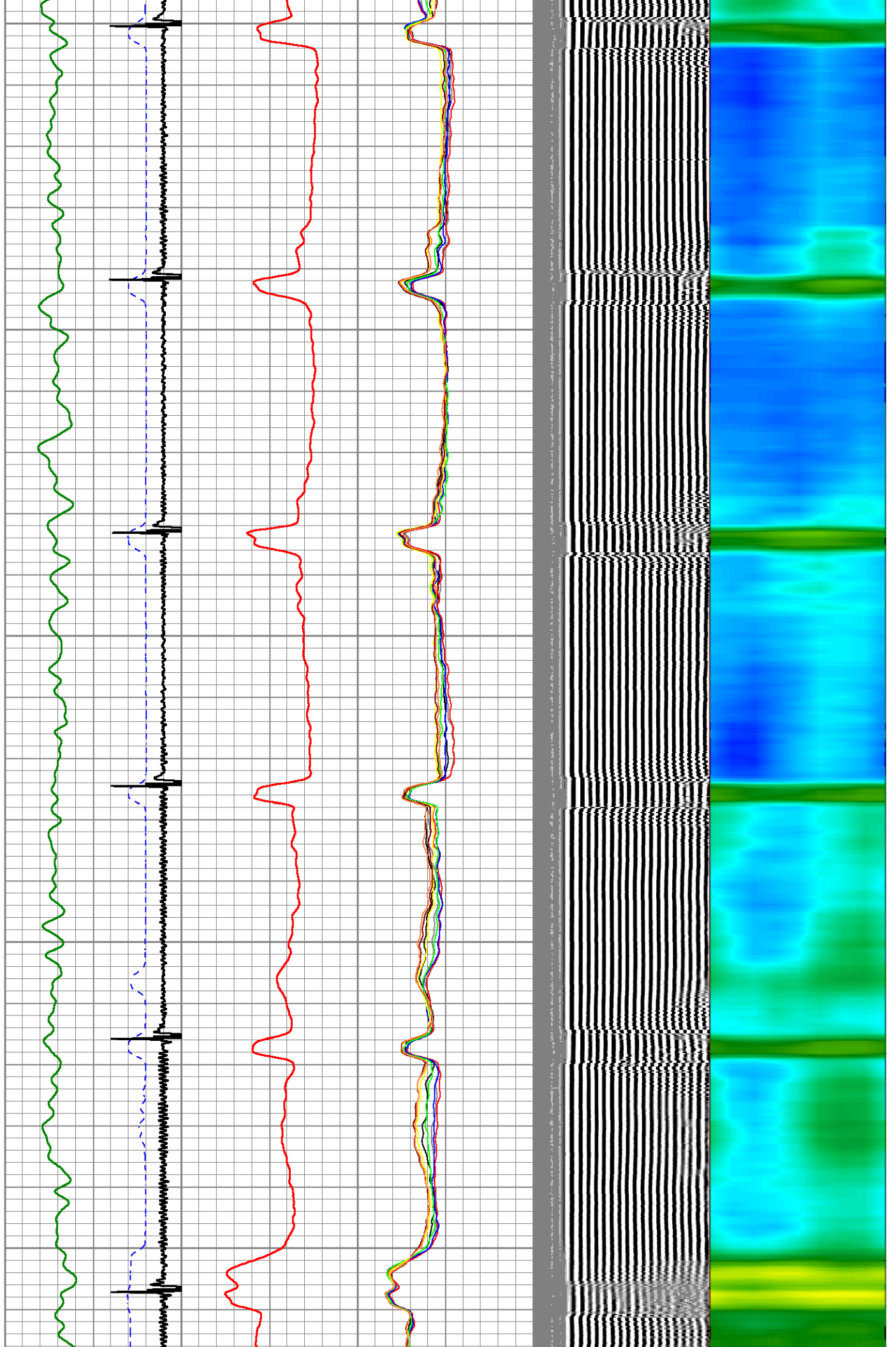
1350

1400

1450



1500
1550
1600
1650
1700

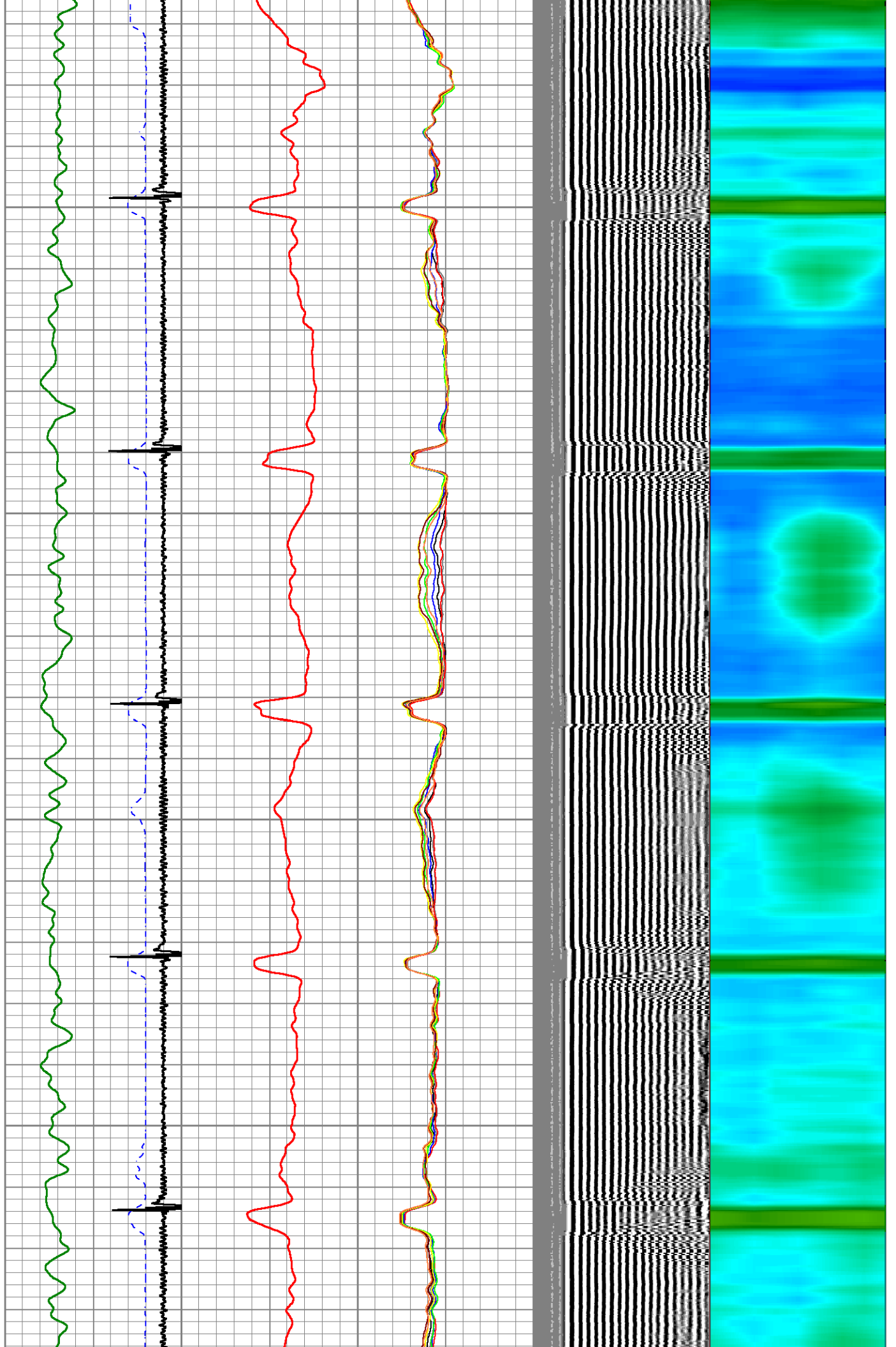


1750

1800

1850

1900



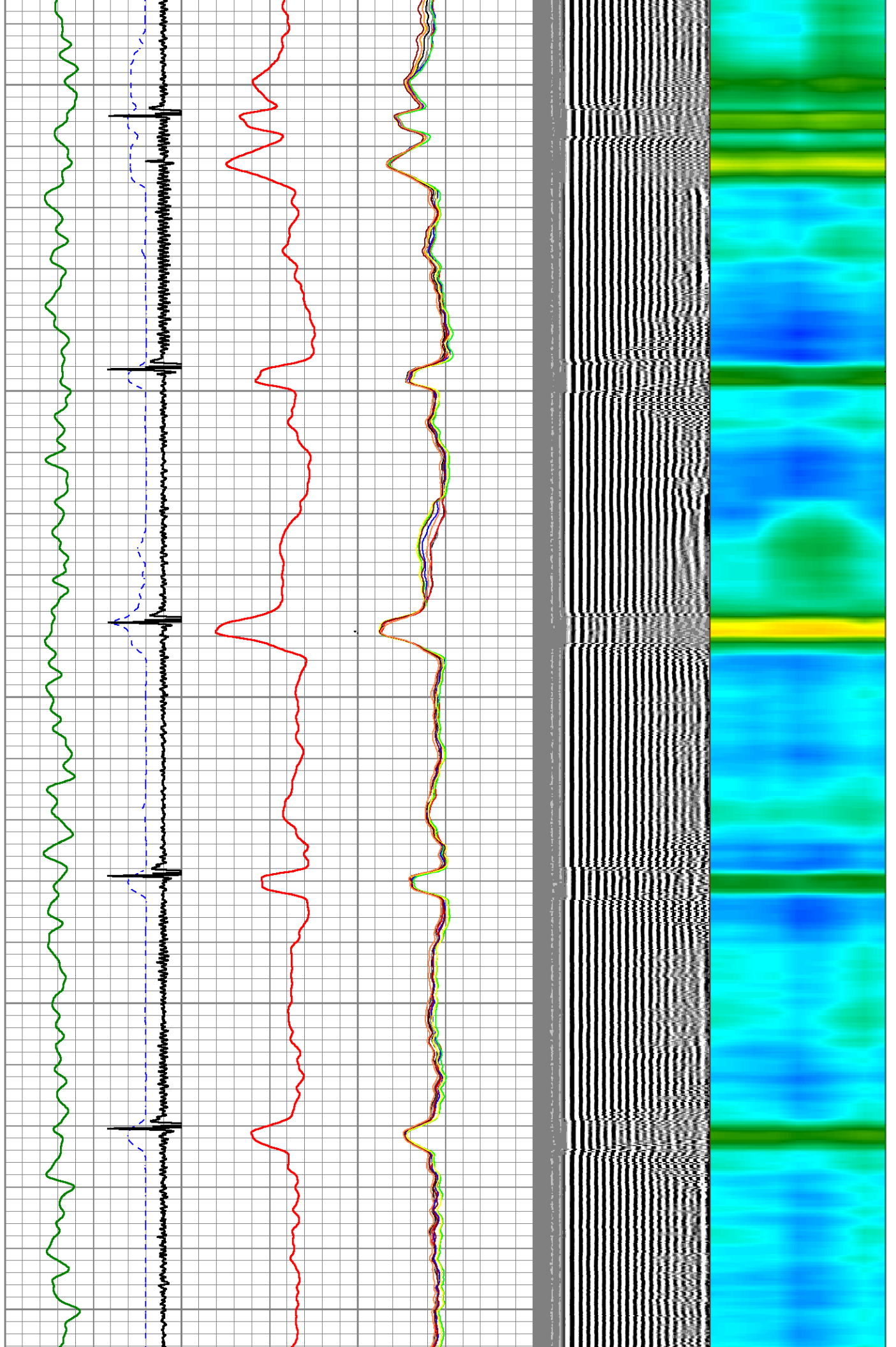
1950

2000

2050

2100

2150

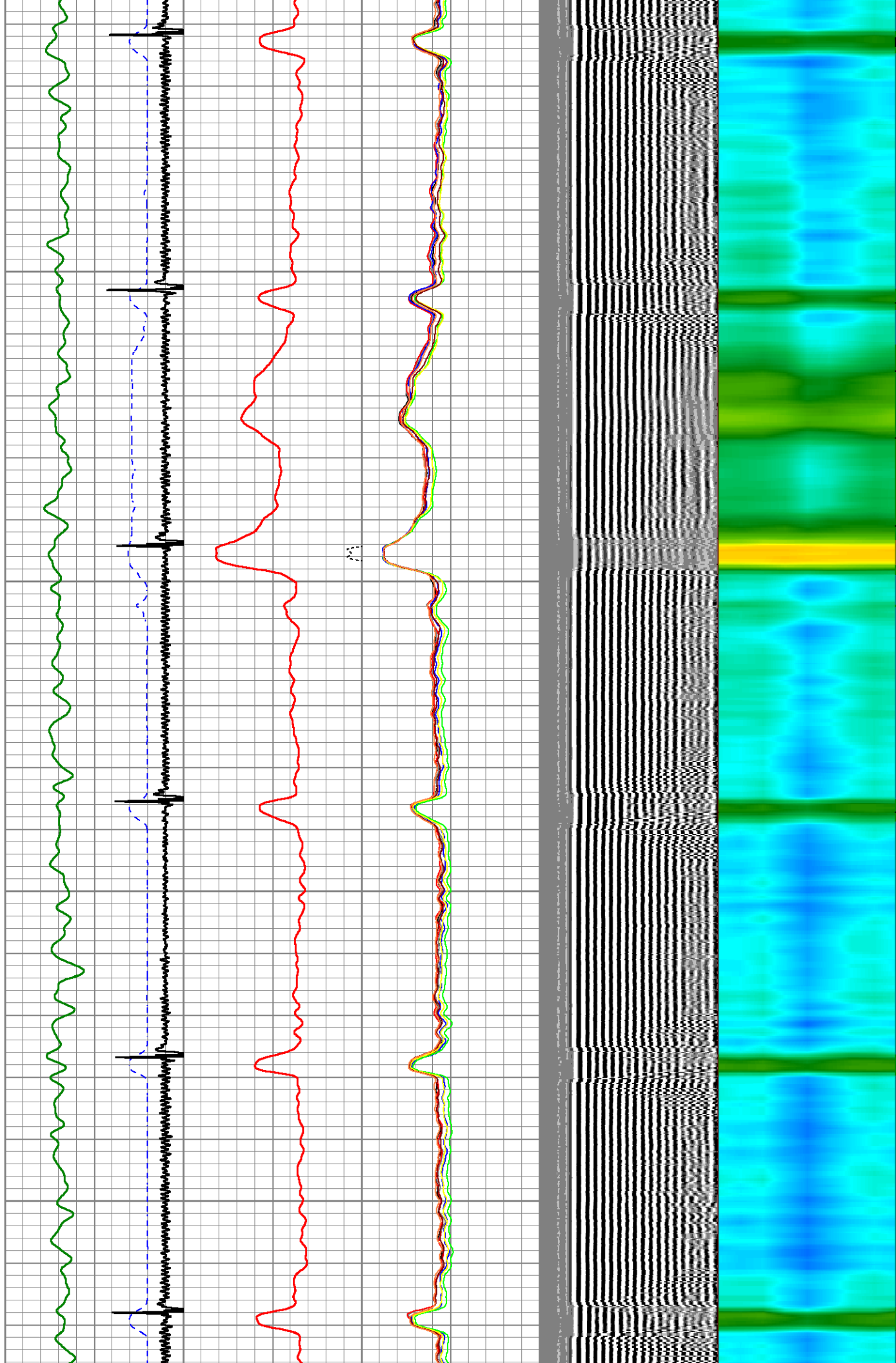


2200

2250

2300

2350

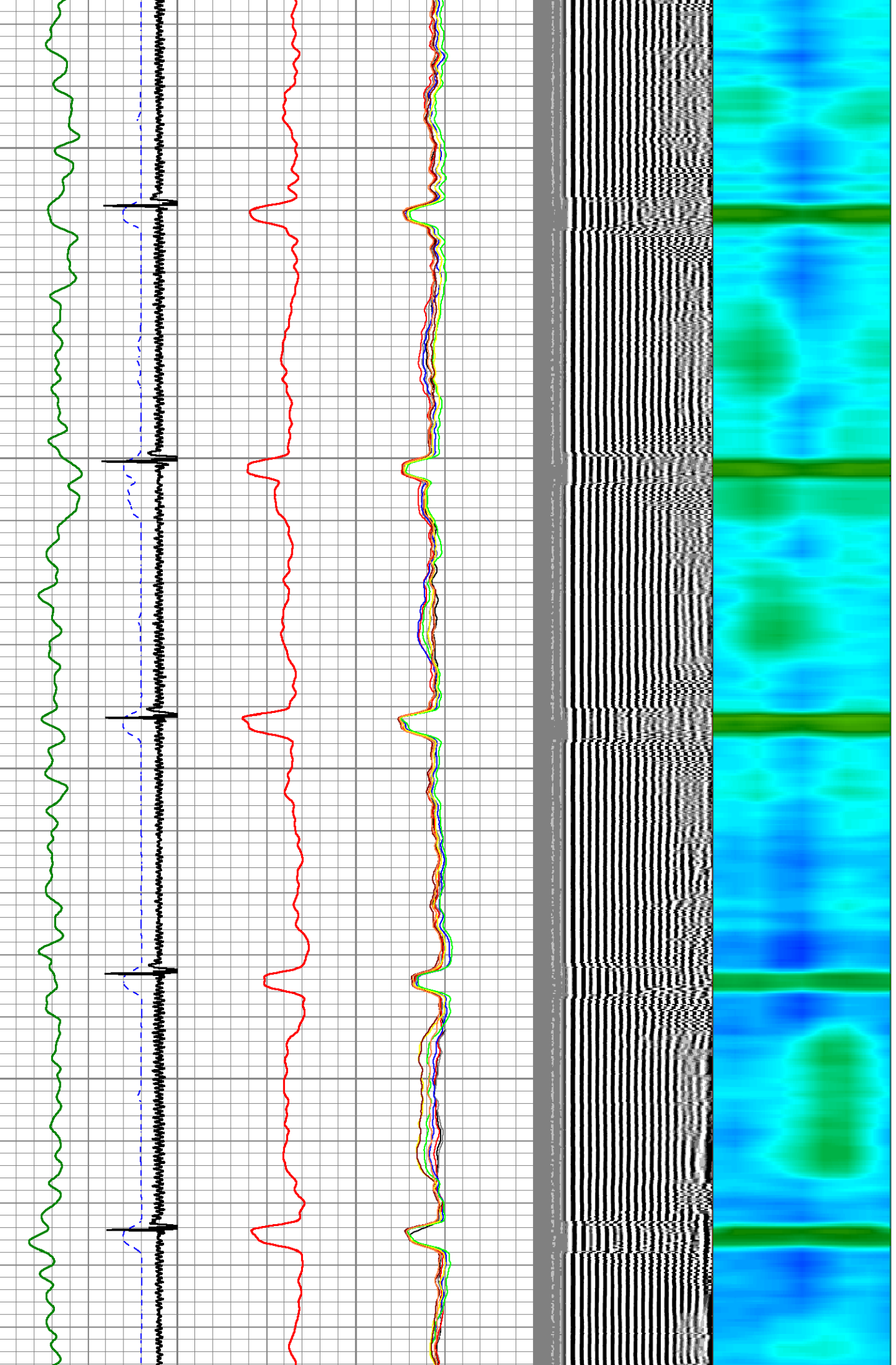


2400

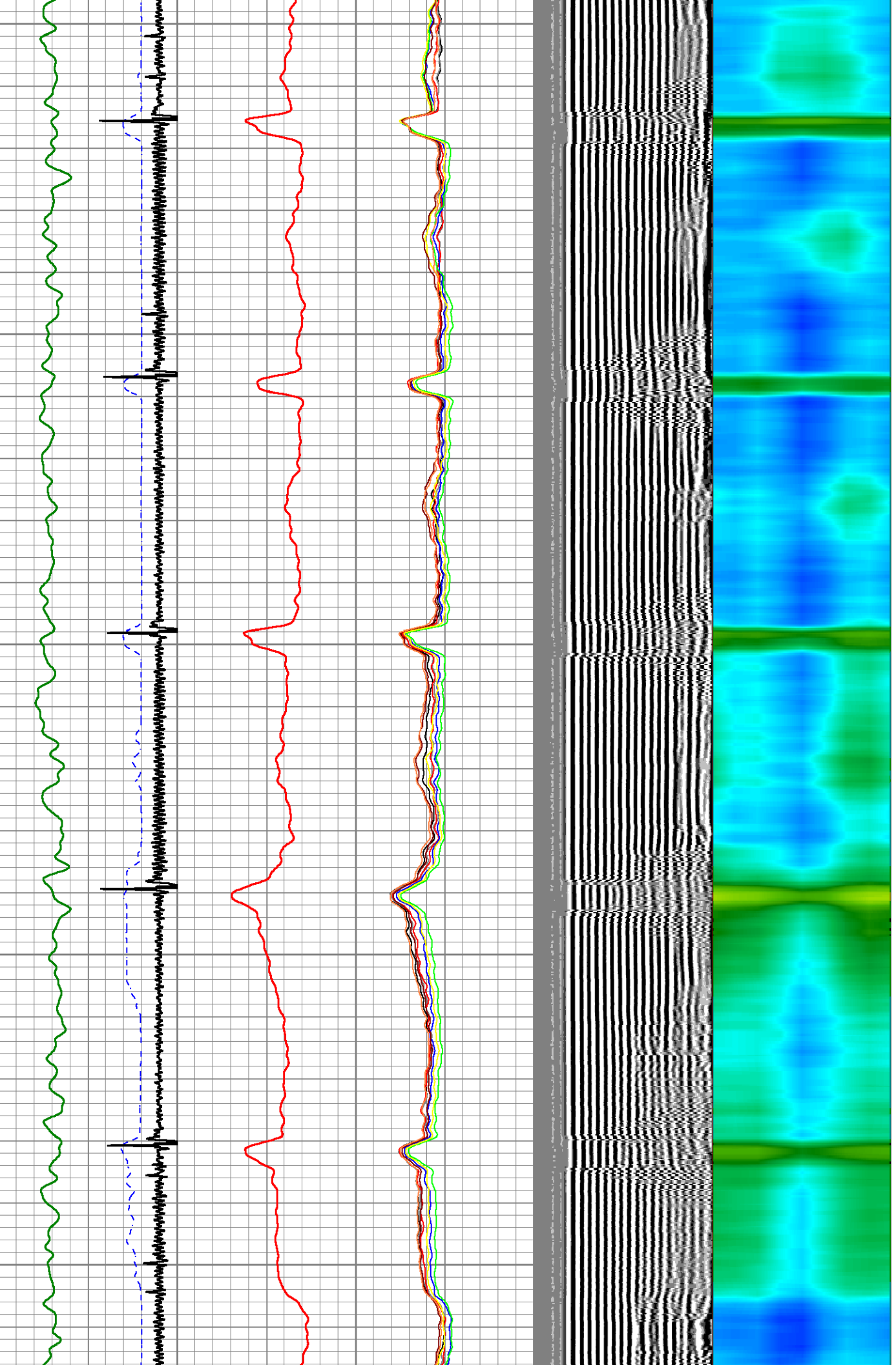
2450

2500

2550



2600
2650
2700
2750
2800

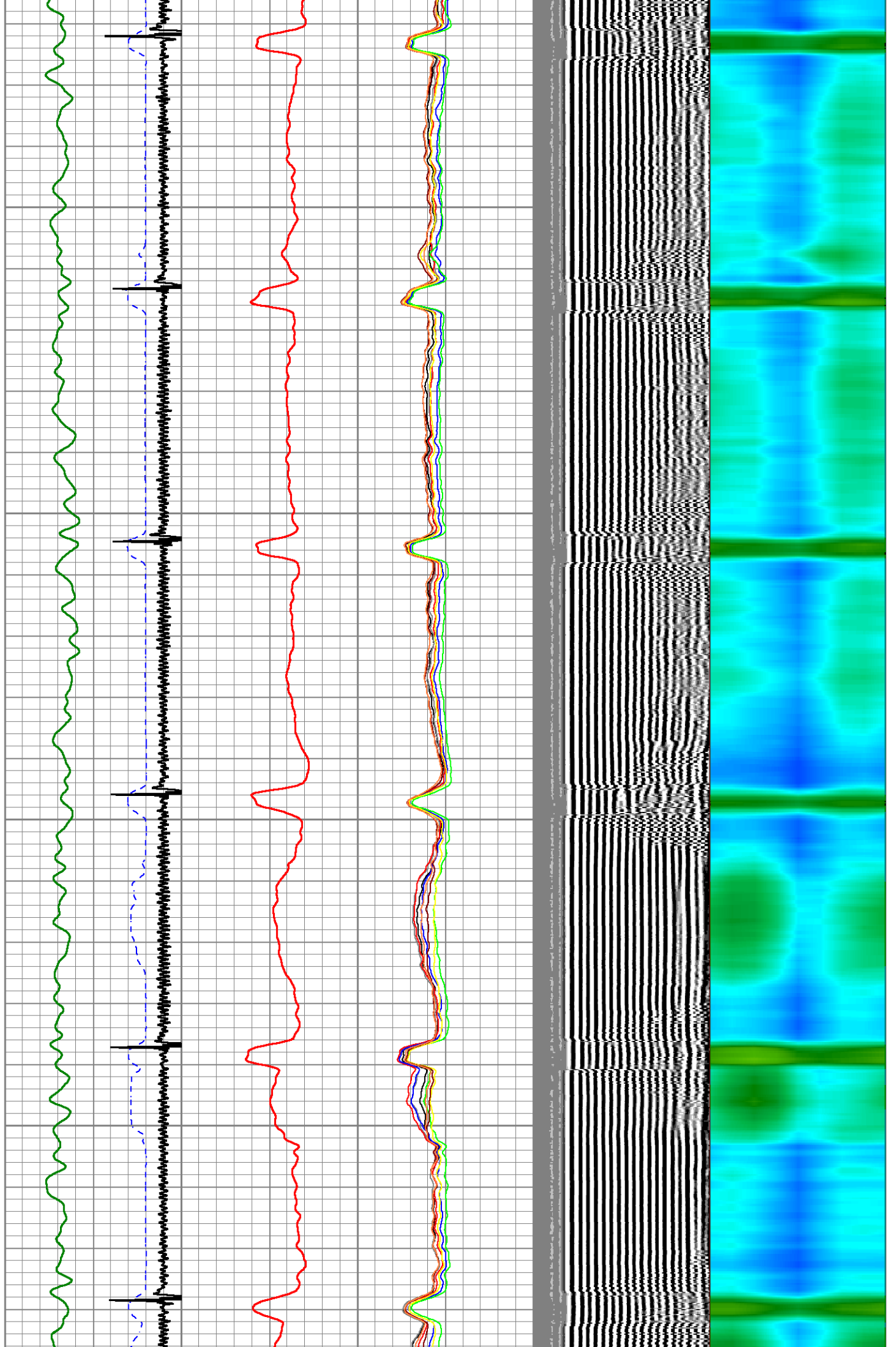


2850

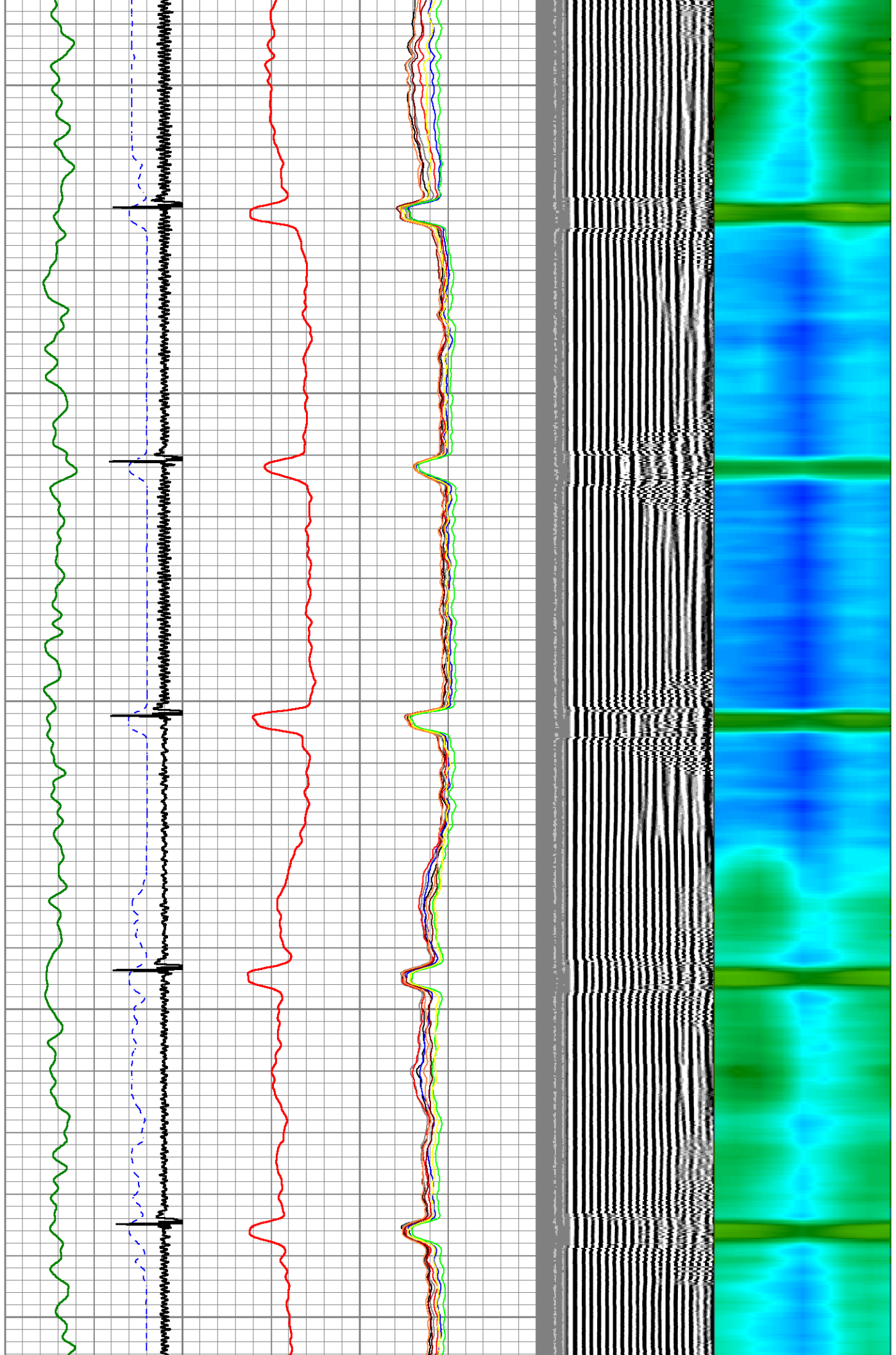
2900

2950

3000



3050
3100
3150
3200
3250

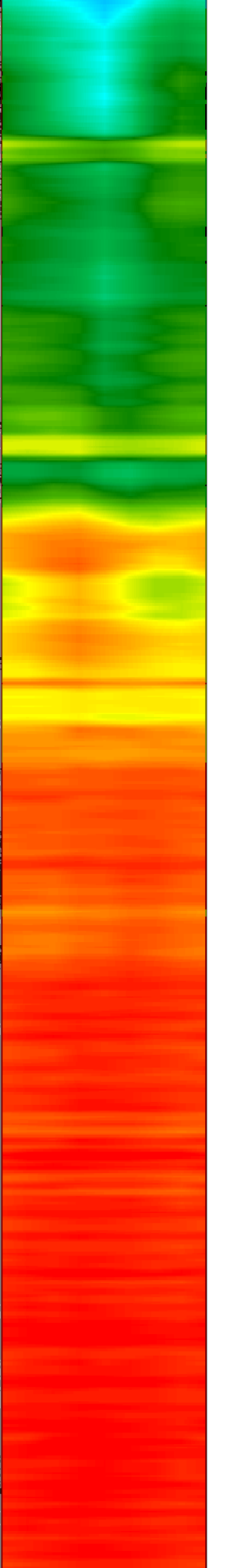
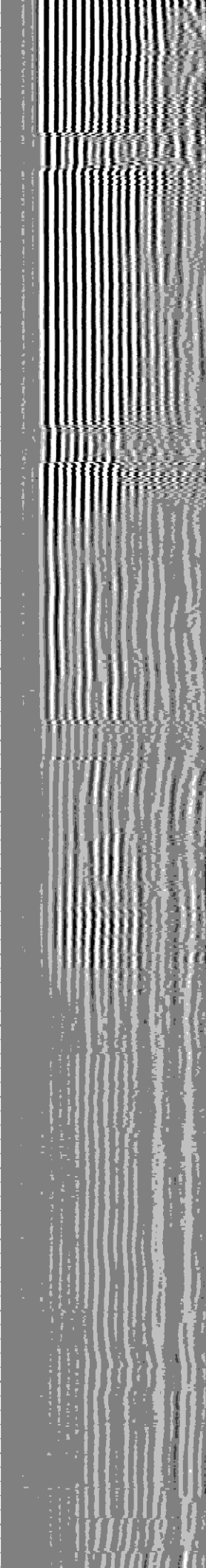
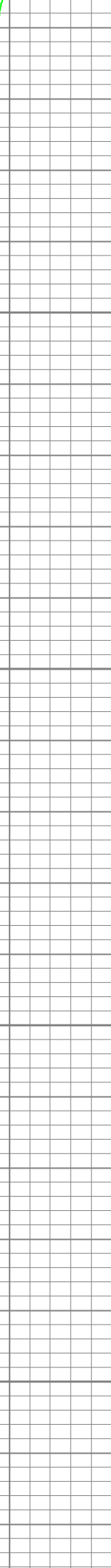
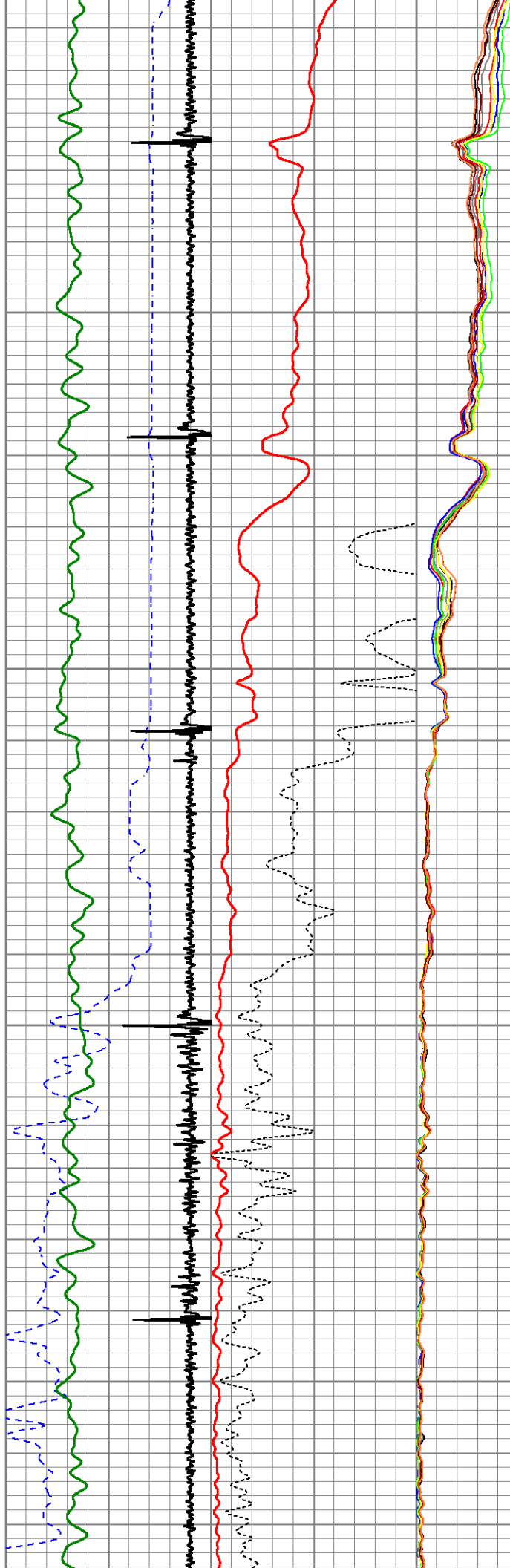


3300

3350

3400

3450

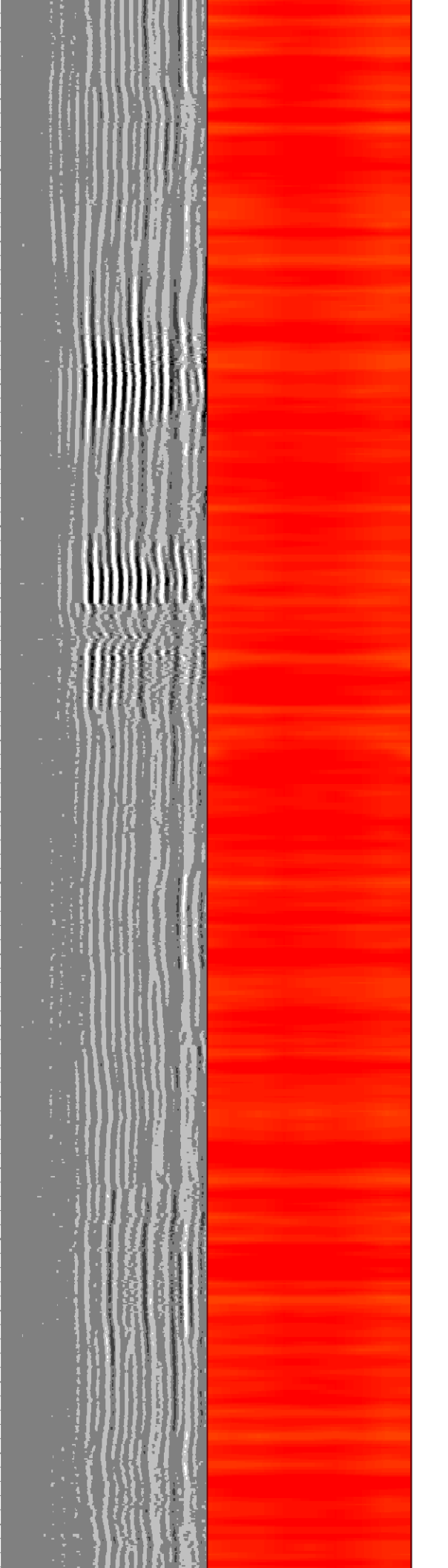
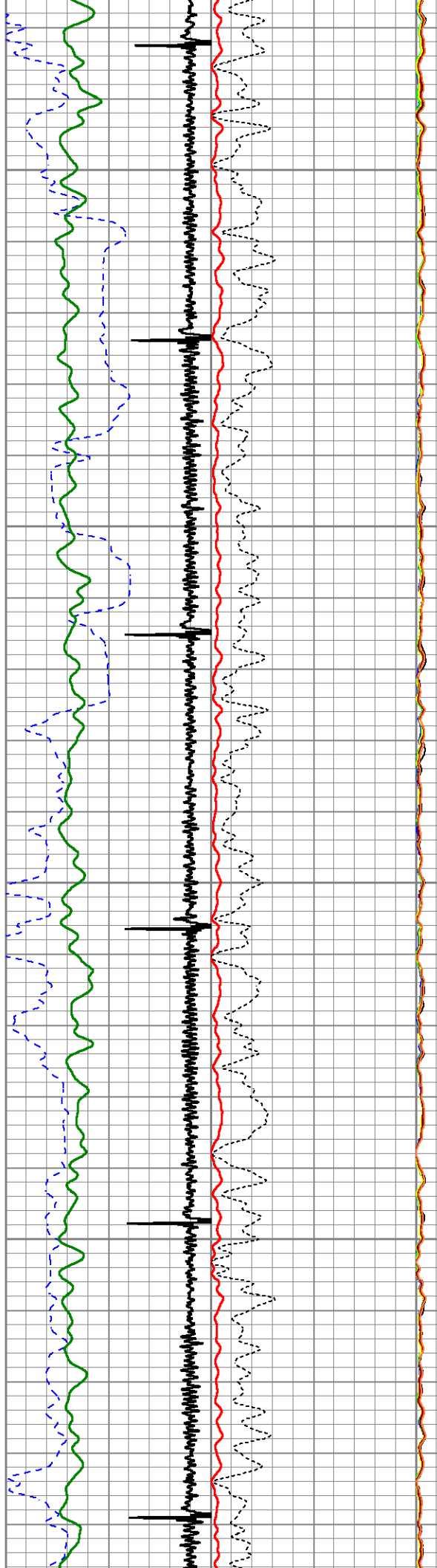


3500

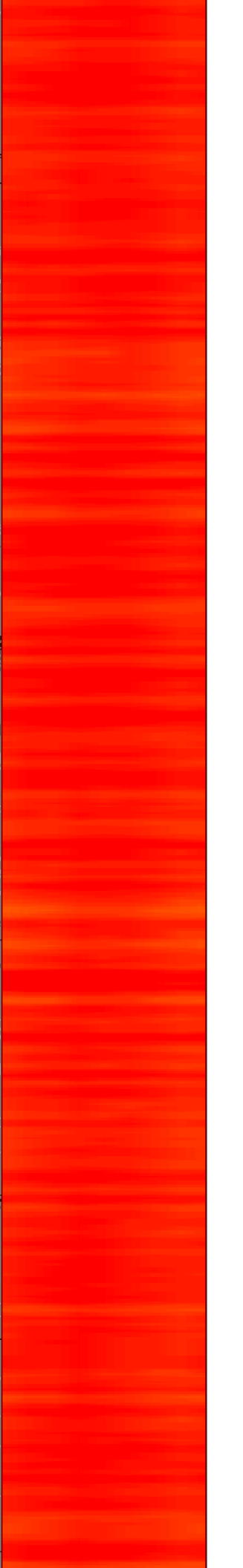
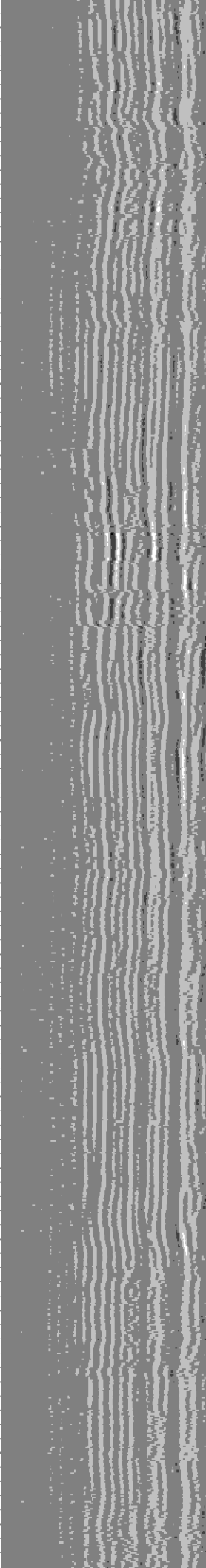
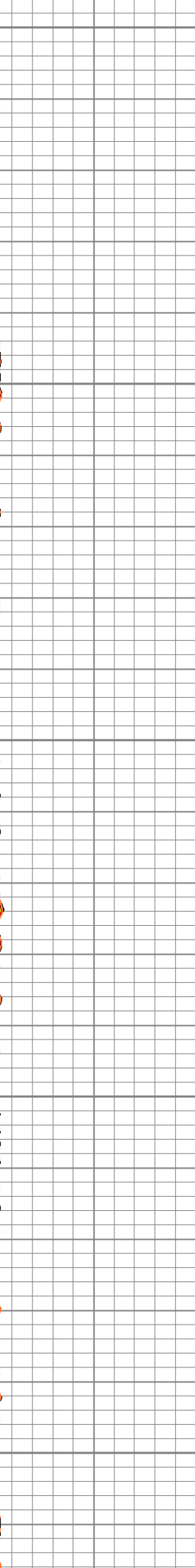
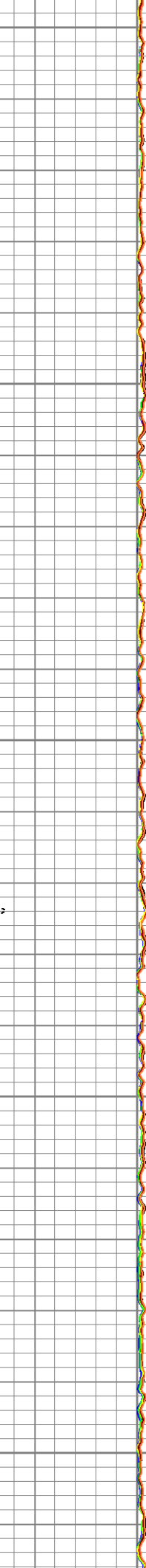
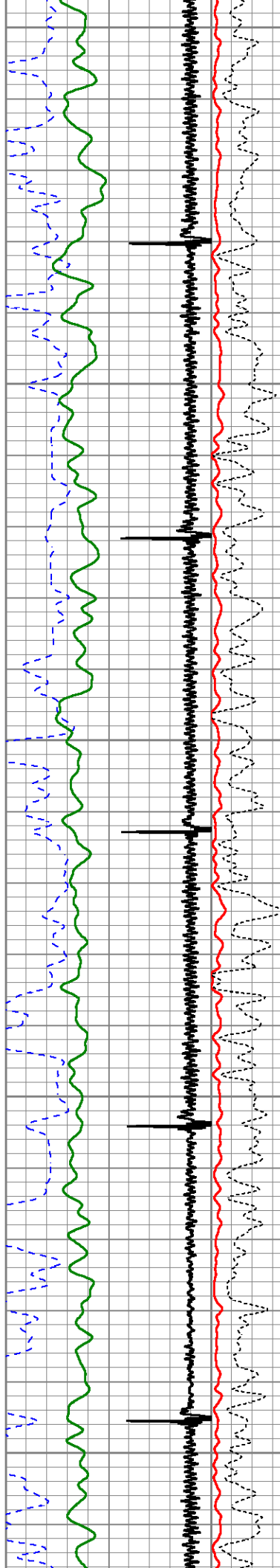
3550

3600

3650



3700
3750
3800
3850
3900

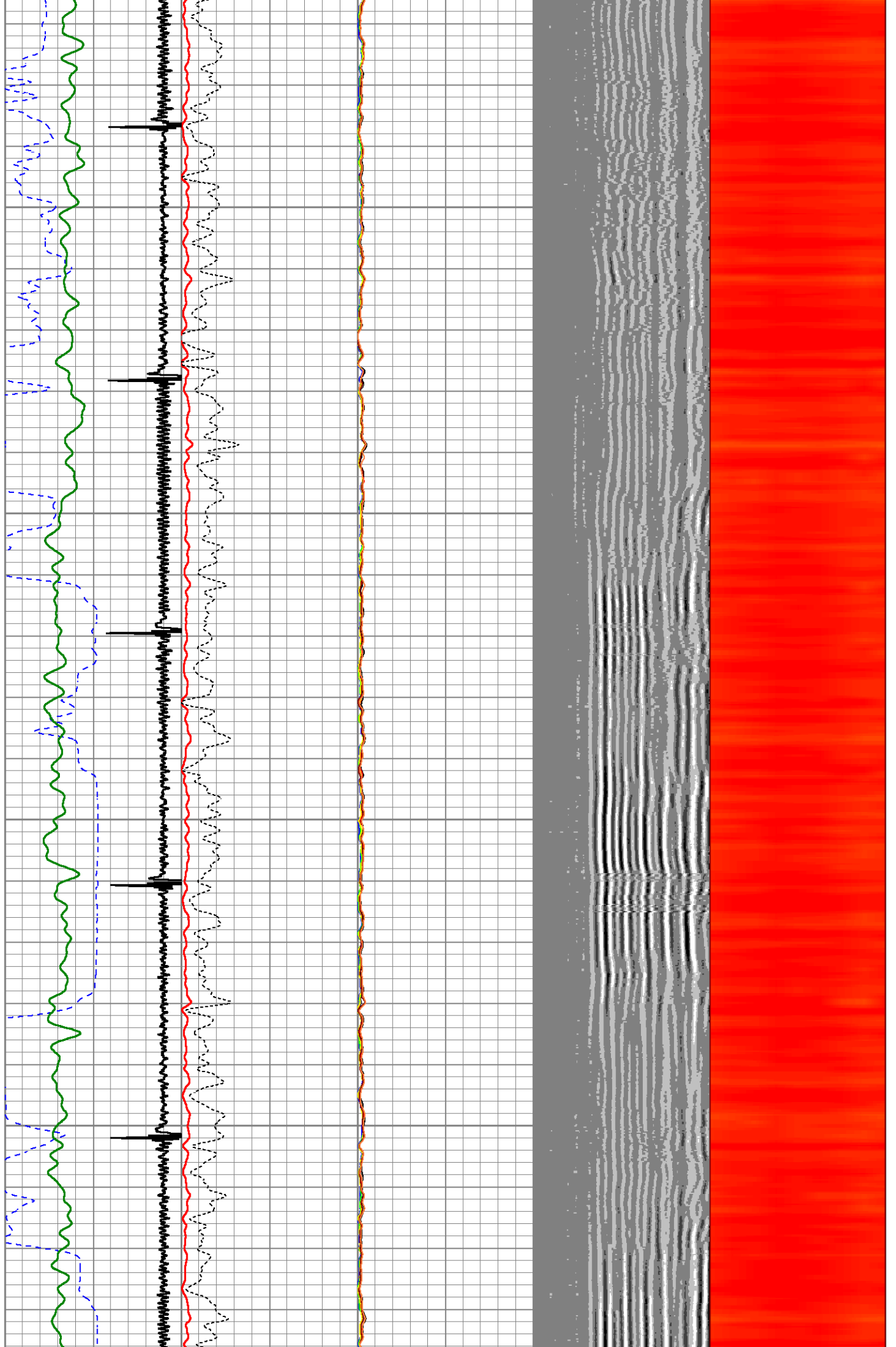


3950

4000

4050

4100



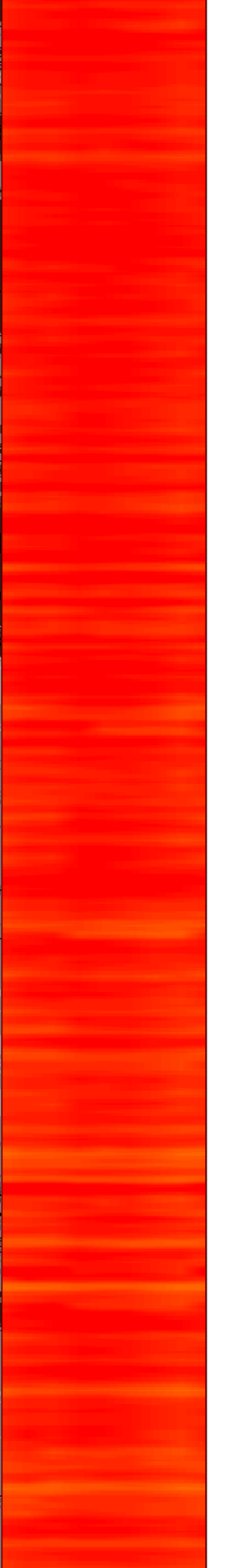
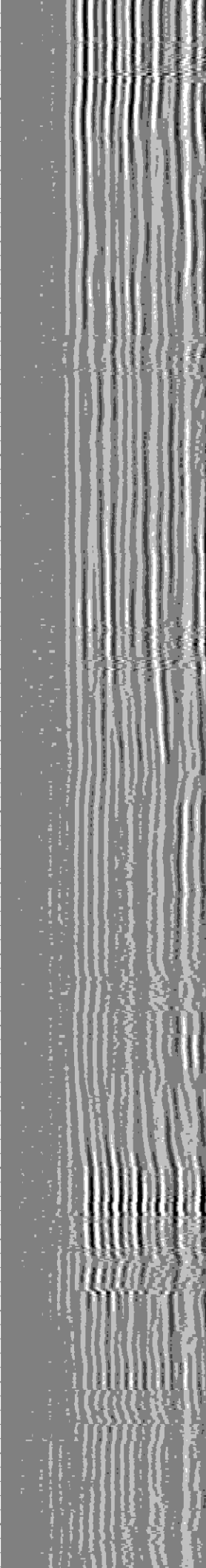
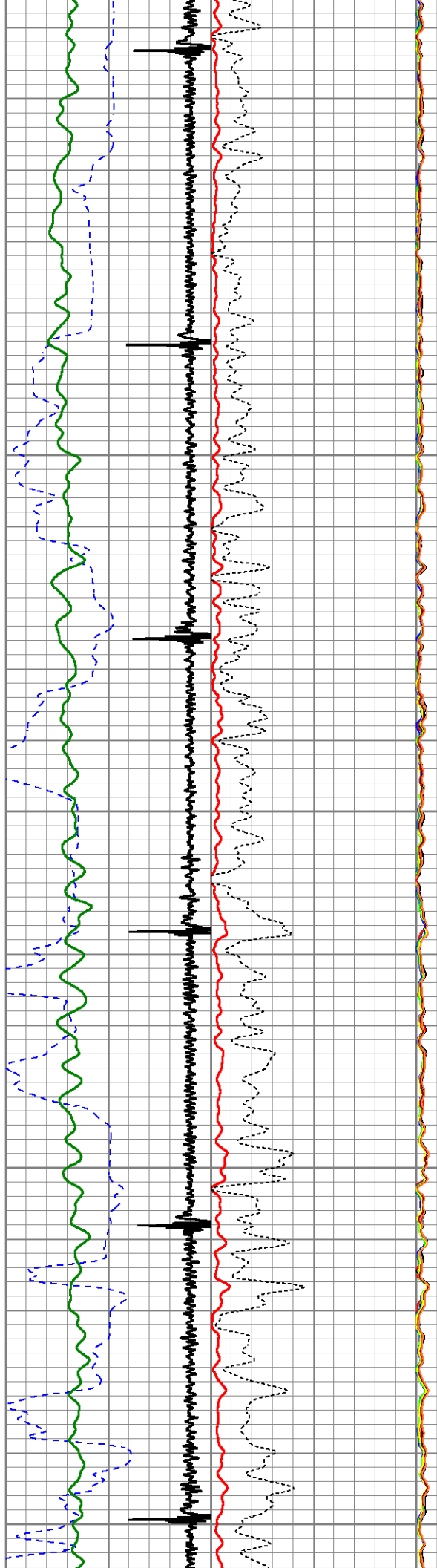
4150

4200

4250

4300

4350

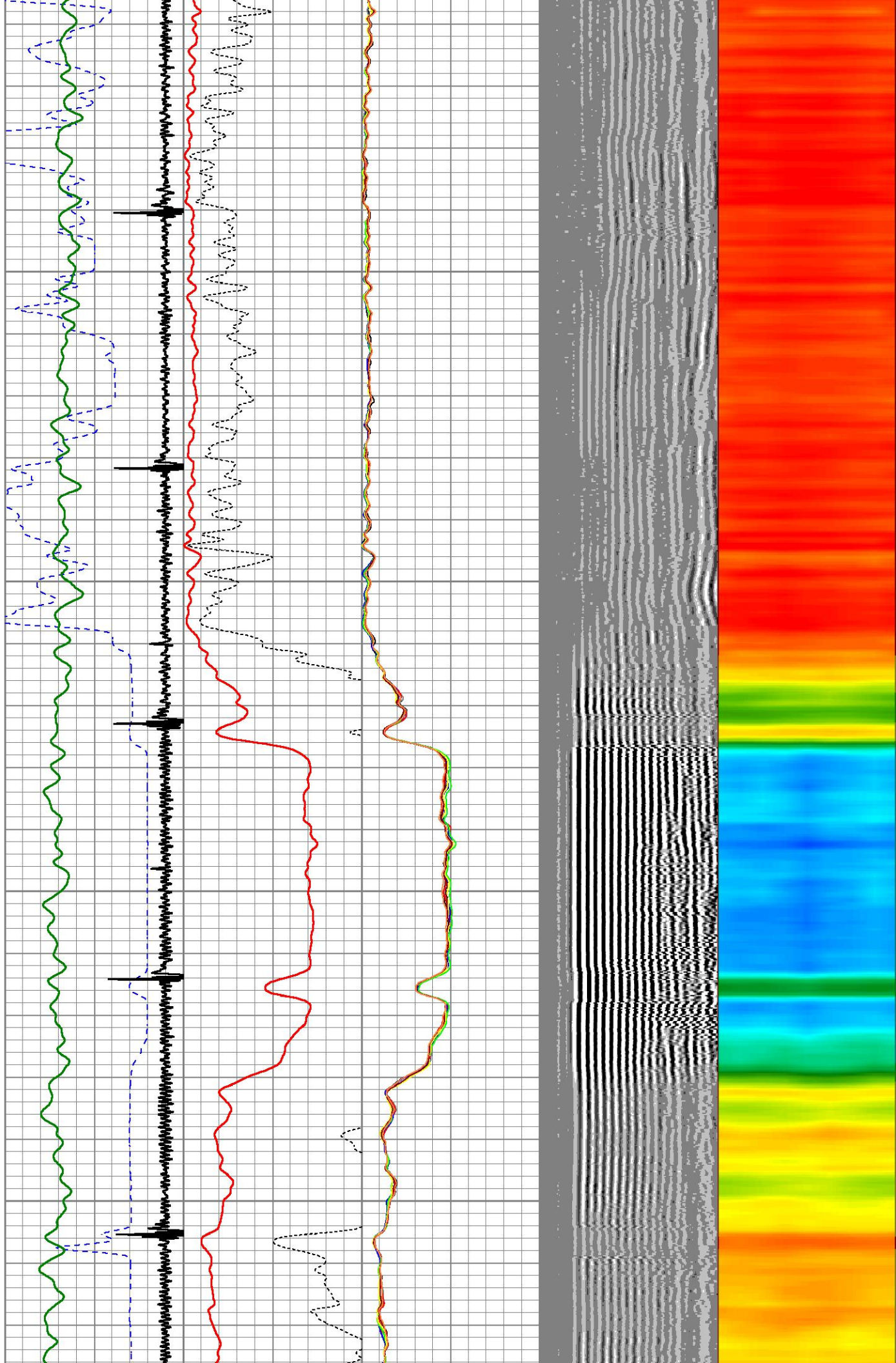


4400

4450

4500

4550

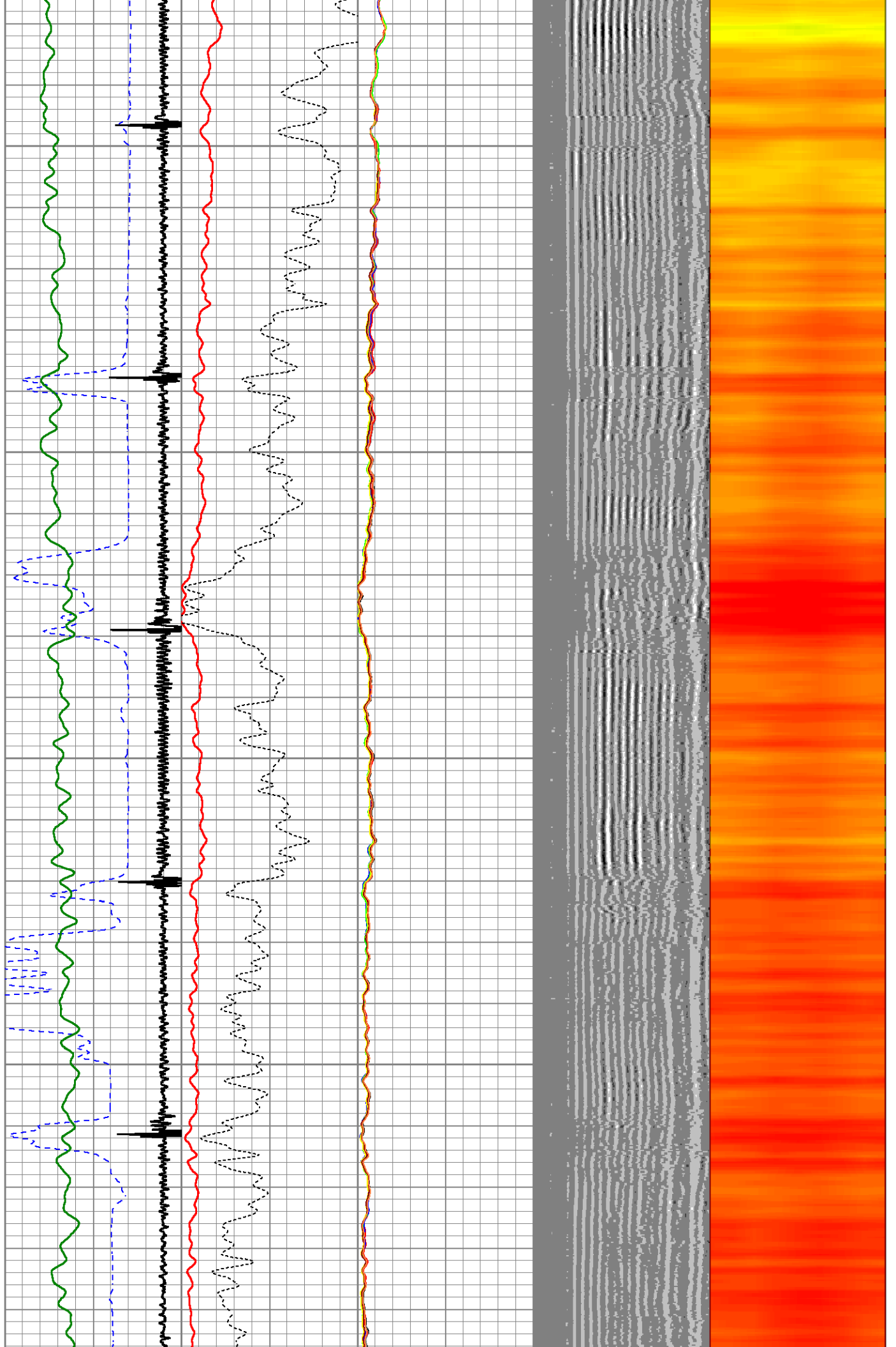


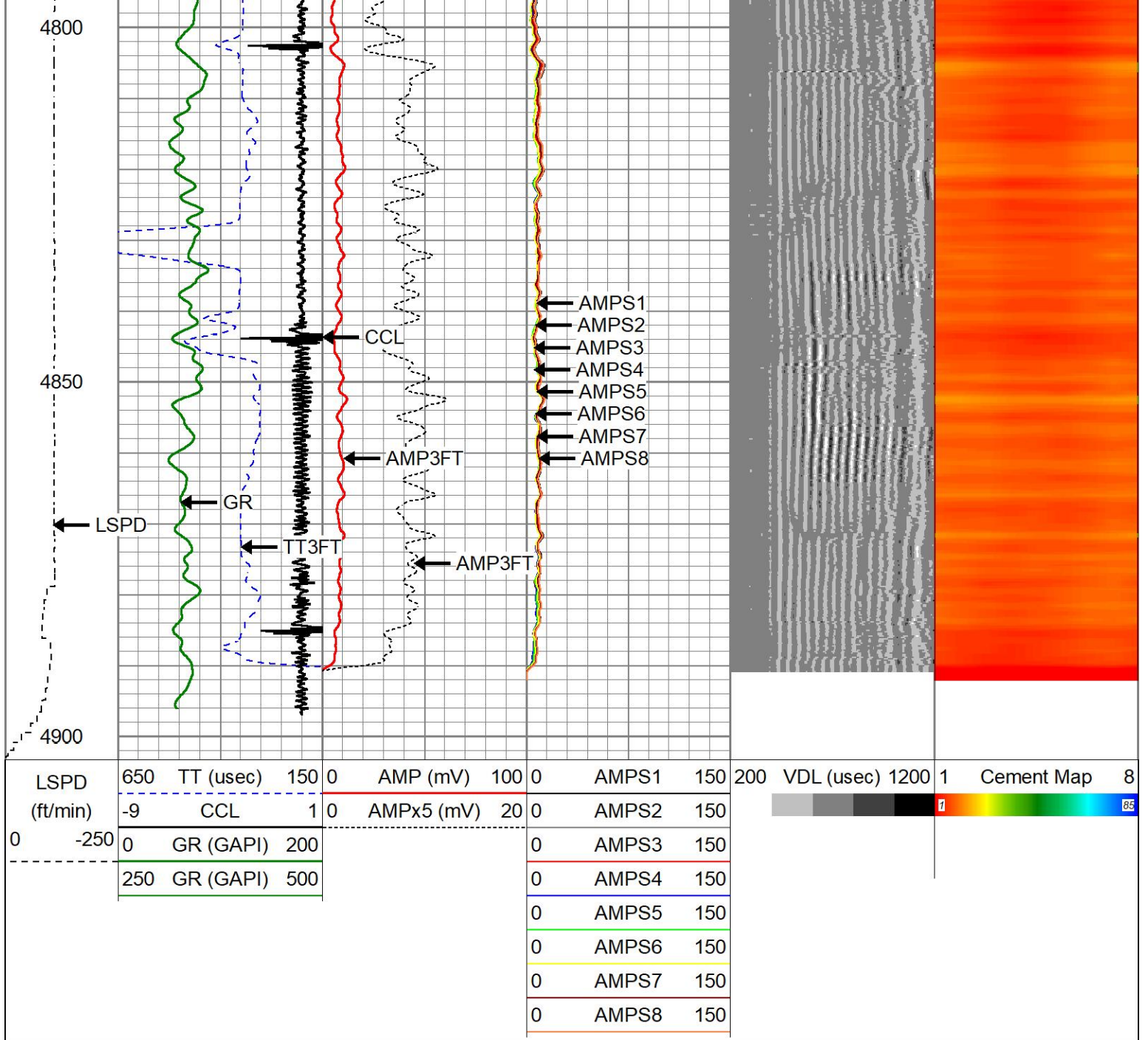
4600

4650

4700

4750





Calibration Report

Database File 4-civ-edith-ann--6-8-21-rcbl.db
 Dataset Pathname MAIN
 Dataset Creation Mon May 05 12:59:23 2025

Gamma Ray Calibration Report

Serial Number: 27GRL10-XXXX
 Tool Model: 27GRL10
 Performed: Mon Mar 11 13:46:24 2024

Calibrator Value: 1.0 GAPI

Background Reading: 0.0 cps
 Calibrator Reading: 1.0 cps

Sensitivity: 0.5000 GAPI/cps

Segmented Cement Bond Log Calibration Report

Serial Number: _____ Corelog Ext Temp _____

Serial Number: Greeley Ext Temp
 Tool Model: 27SBT10
 Calibration Casing Diameter: 4.500 in
 Calibration Depth: 3579.139 ft

Master Calibration, performed (Derived):

	Raw (v)		Calibrated (mv)		Results	
	Zero	Cal	Zero	Cal	Gain	Offset
3'	0.018	1.050	0.250	81.196	78.415	-1.127
CAL	0.965	1.375				
5'	0.025	0.787	0.250	81.196	106.144	-2.352
SUM						
S1	0.027	1.040	0.000	81.196	80.164	-2.165
S2	0.012	1.001	0.000	81.196	82.110	-0.965
S3	0.018	1.000	0.000	81.196	82.661	-1.484
S4	0.027	1.021	0.000	81.196	81.759	-2.239
S5	0.028	1.031	0.000	81.196	80.972	-2.267
S6	0.024	1.062	0.000	81.196	78.251	-1.880
S7	0.008	1.038	0.000	81.196	78.790	-0.601
S8	-0.002	1.041	0.000	81.196	77.837	0.190

Internal Reference Calibration, performed Thu Mar 10 14:36:00 2022:

	Raw (v)		Calibrated (v)		Results	
	Zero	Cal	Zero	Cal	Gain	Offset
CAL	0.000	0.000	0.965	1.375	1.000	0.000

Air Zero Calibration, performed Mon May 5 11:30:22 2025:

	Raw (v)	Calibrated (v)	Results
	Zero	Zero	Offset
3'	0.000	0.000	0.000
5'	0.000	0.000	0.000
SUM			
S1	0.000	0.000	0.000
S2	0.000	0.000	0.000
S3	0.000	0.000	0.000
S4	0.000	0.000	0.000
S5	0.000	0.000	0.000
S6	0.000	0.000	0.000
S7	0.000	0.000	0.000
S8	0.000	0.000	0.000



Company CIVITAS
 Well EDITH ANN 6-8-21
 Field WATTENBURG
 County WELD
 State CO
 Country USA