

Looking at former well location. No remedial activities present.



La Salle, CO, United States

Lat 40.252696, Long -104.638154
08/14/2025 09:08 AM GMT-06:00
ECMC : Environmental Inspection

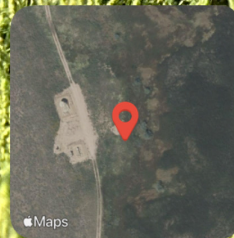


80°F

6.55 mph

4.98 m

2° N



La Salle, CO, United States


Lat 40.252712, Long -104.637973

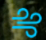
08/14/2025 09:09 AM GMT-06:00


ECMC : Environmental Inspection

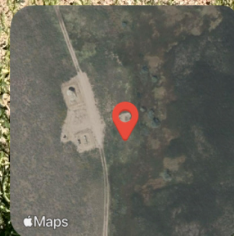


 80°F

 130° SE

 6.55 mph

 7.36 m



La Salle, CO, United States

Lat 40.252643, Long -104.638031

08/14/2025 09:09 AM GMT-06:00

ECMC : Environmental Inspection



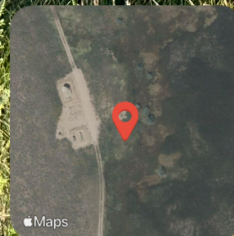
80°F

241° SW

6.55 mph

6.87 m

Unused ancillary equipment is present adjacent to the former well location.



La Salle, CO, United States

Lat 40.252623, Long -104.637992

08/14/2025 09:09 AM GMT-06:00

ECMC : Environmental Inspection

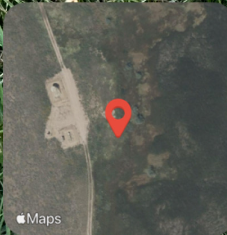


80°F

330° NW

6.55 mph

6.86 m



La Salle, CO, United States

Lat 40.252639, Long -104.637960
08/14/2025 09:10 AM GMT-06:00
ECMC : Environmental Inspection



☀️ 80°F

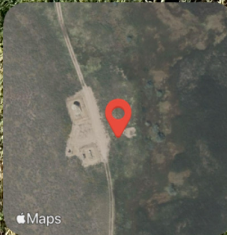
🌍 298° NW

🌬️ 6.55 mph

📏 8.19 m

📍 Maps

Looking at the former tank battery. The tank battery has been decommissioned. No remedial activities present.



La Salle, CO, United States

Lat 40.252748, Long -104.638127

08/14/2025 09:12 AM GMT-06:00

ECMC : Environmental Inspection



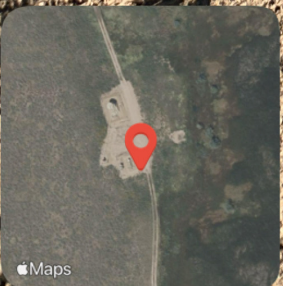
80°F

172° S

6.55 mph

4.75 m

A hole/area of ground subsidence is present in the vicinity of the former separator.



La Salle, CO, United States

Lat 40.252612, Long -104.638280
08/14/2025 09:12 AM GMT-06:00
ECMC : Environmental Inspection



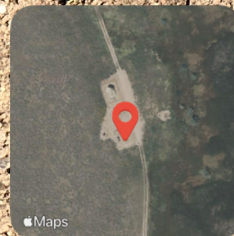
80°F

178° S

6.55 mph

5.16 m

Trash (multiple pieces of plastic and metal) and E&P waste (red metal pipe) are present on location.



La Salle, CO, United States

Lat 40.252627, Long -104.638349

08/14/2025 09:12 AM GMT-06:00

ECMC : Environmental Inspection

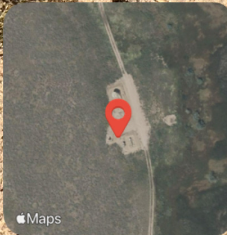


80°F

229° SW

6.55 mph

5.24 m



La Salle, CO, United States

Lat 40.252673, Long -104.638452

08/14/2025 09:13 AM GMT-06:00

ECMC : Environmental Inspection



☀️ 80°F

🌬️ 233° SW

🌊 6.55 mph

📏 5.86 m