

WGS84 $\pm 16\text{ft}$ 40.77944, -106.23372 $\wedge^m_{\pm 4\text{m}}$ 2508 $\triangle^{\circ, T}_{\pm 11}$ W277



ECMC
Environmental
Field Inspection



Walden Water Flood Facility
04-Jun-25 10:56:05 AM
ECMC Environmental Inspection

Looking west at the network of monitoring wells and air sparge/soil vapor extraction system wells. Metal monitoring well monuments are visible.

WGS84
±8ft

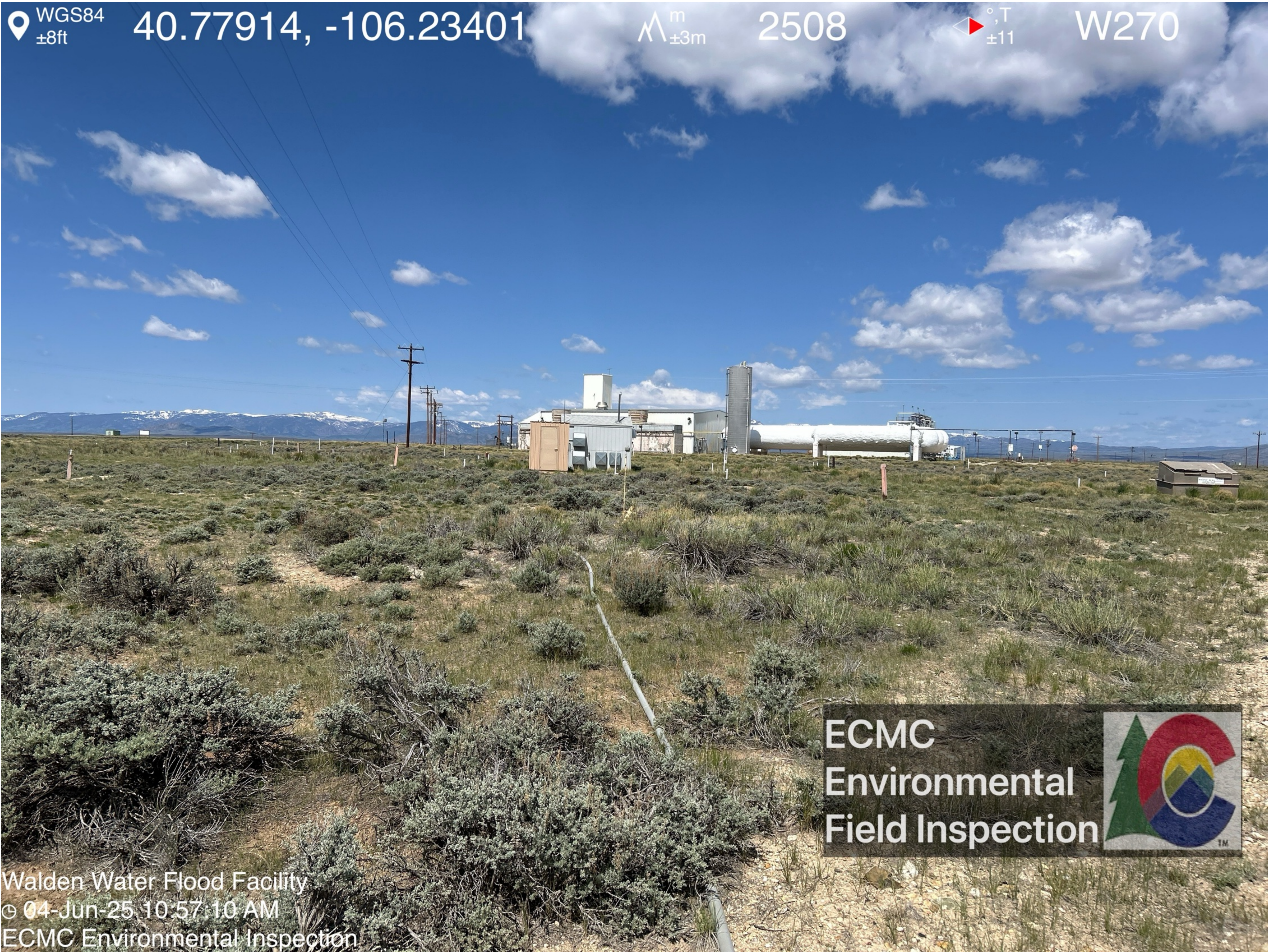
40.77914, -106.23401

m
±3m

2508

°T
±11

W270



ECMC
Environmental
Field Inspection



Walden Water Flood Facility
© 04-Jun-25 10:57:10 AM
ECMC Environmental Inspection

Above-ground conveyance lines connecting the remedial well network to a shed are visible.

WGS84 $\pm 9\text{ft}$ 40.77883, -106.23448 $\Delta^m_{\pm 3\text{m}}$ 2508 $\text{°}, T_{\pm 11}$ NW340



ECMC
Environmental
Field Inspection



Walden Water Flood Facility
© 04-Jun-25 10:58:31 AM
ECMC Environmental Inspection

Above-ground conveyance lines are visible in the foreground; sheds surrounded by metal monitoring well monuments and white PVC stickup remedial and/or monitoring wells are visible in the backgrounds.

WGS84
±8ft

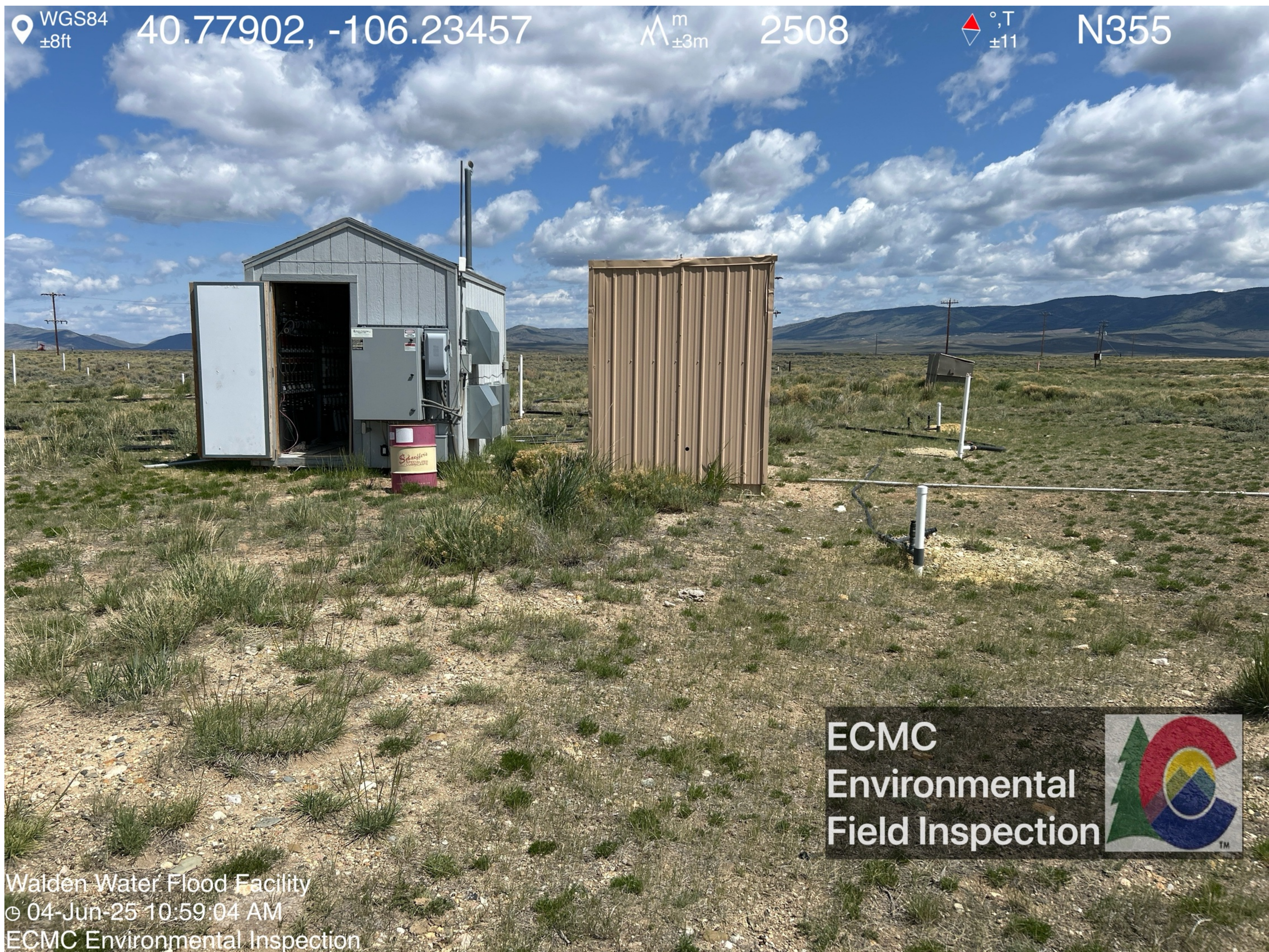
40.77902, -106.23457

m
±3m

2508

°T
±11

N355



Walden Water Flood Facility
© 04-Jun-25 10:59:04 AM
ECMC Environmental Inspection

ECMC
Environmental
Field Inspection 

Looking at shed (left). The shed door was observed open upon arrival. The metal shed (right) remained closed during the inspection.

WGS84 40.77910, -106.23460 Δ m 2508 ∇ °, T \pm 11 N358
 \pm 9ft \pm 3m



ECMC
Environmental
Field Inspection



Walden Water Flood Facility
© 04-Jun-25 10:59:20 AM
ECMC Environmental Inspection

A metal drum labeled "Schaeffer's specialized lubricants" is visible adjacent to the shed.



ECMC
Environmental
Field Inspection



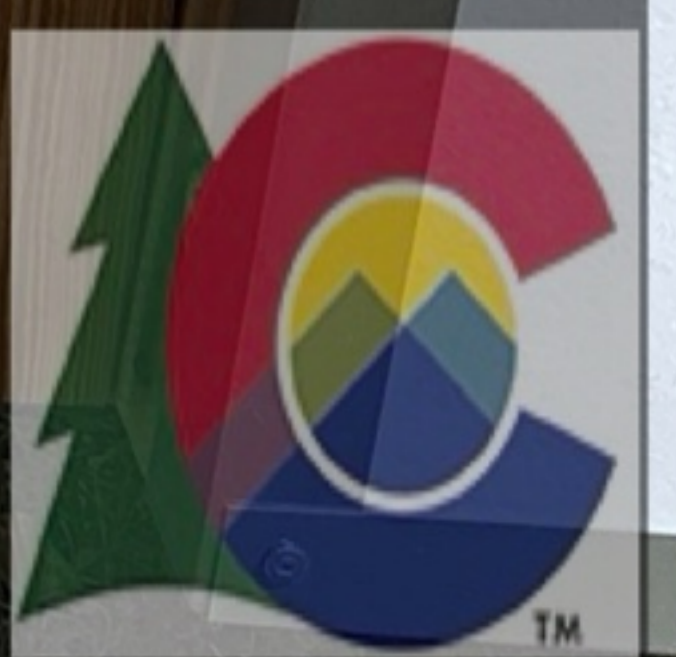
den Water Facility
-Jun-25 10:00
ECMC Environmental Field Inspection

Manifolds and valves are visible within the shed.

WGS84 $\pm 14\text{ft}$ 40.77911, -106.23464 Δ $\pm 3\text{m}$ 2508 \triangle ± 11 °, T N351



ECMC
Environmental
Field Inspection



Walden Water Flood Facility
© 04-Jun-25 11:00:07 AM
ECMC Environmental Inspection

Looking at conveyance lines connecting to the shed.

WGS84 $\pm 11\text{ft}$ 40.77921, -106.23461 $\pm 3\text{m}$ 2508 ± 11 °, T SW196



ECMC
Environmental
Field Inspection



Walden Water Flood Facility
© 04-Jun-25 11:00:41 AM
ECMC Environmental Inspection

Looking at above-ground conveyance line manifolds.

WGS84 $\pm 14\text{ft}$ 40.77919, -106.23539 $\pm 3\text{m}$ 2508 $^{\circ}\text{T}$ SE110



ECMC
Environmental
Field Inspection



Walden Water Flood Facility
© 04-Jun-25 11:03:29 AM
ECMC Environmental Inspection



Looking east-southeast at the monitoring and remedial well network. A flush mount well is visible in the foreground; PVC stickup wells are visible in the background.