

WGS84  
±11ft

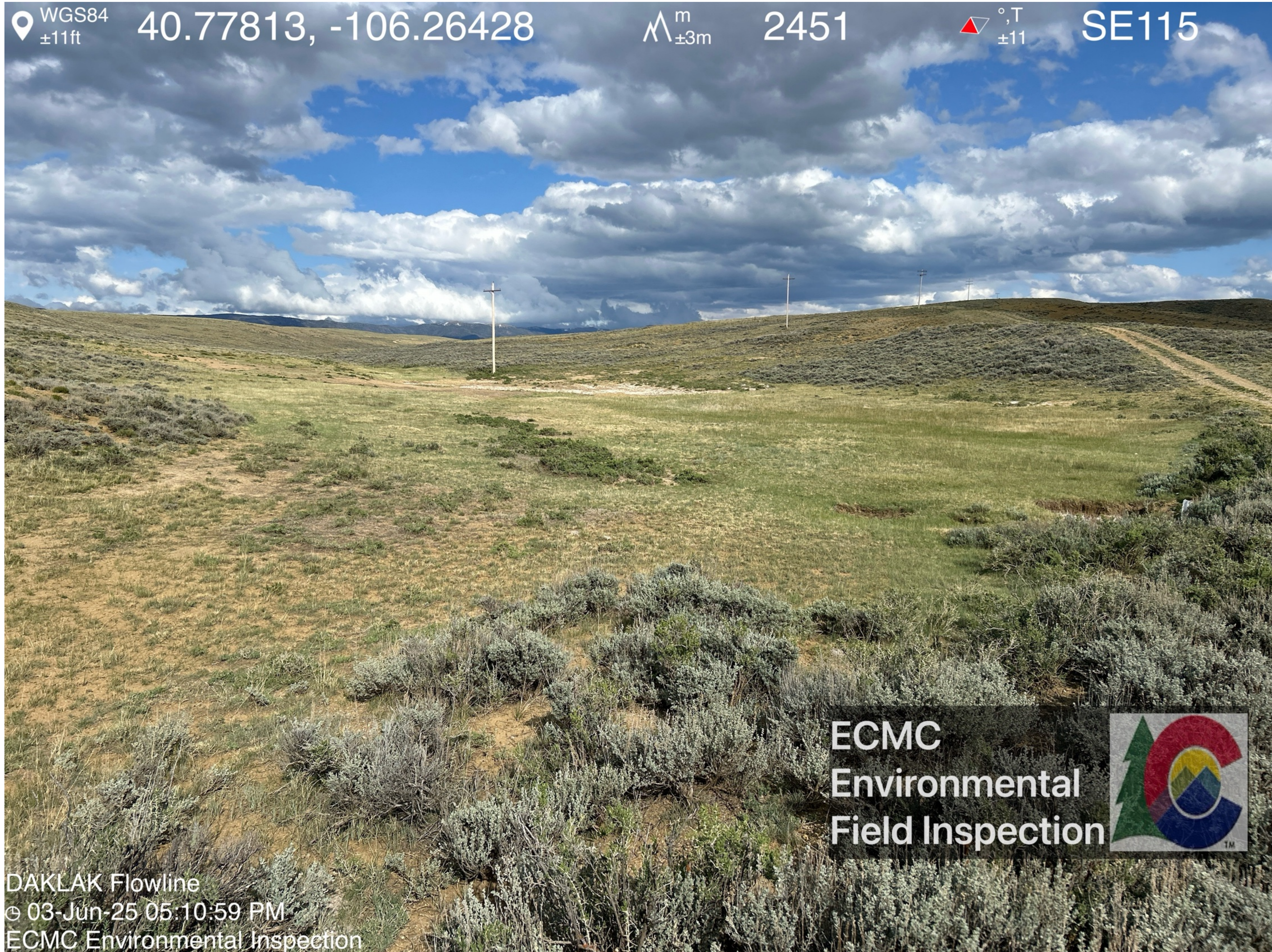
40.77813, -106.26428

m  
±3m

2451

°T  
±11

SE115



ECMC  
Environmental  
Field Inspection



DAKLAK Flowline  
© 03-Jun-25 05:10:59 PM  
ECMC Environmental Inspection

Looking at drainage towards spill location from the access road.

WGS84  
±12ft

40.77801, -106.26416

m  
±4m

2450

°T  
±11

S172



ECMC  
Environmental  
Field Inspection



DAKLAK Flowline  
03-Jun-25 05:11:14 PM  
ECMC Environmental Inspection

Looking at access road down-gradient of the spill location. Salt crusting is visible on both sides of the access road.

WGS84  $\pm 16\text{ft}$  40.77800, -106.26415  $\wedge^m_{\pm 4\text{m}}$  2449  $\triangle^{\circ, T}_{\pm 11}$  E82

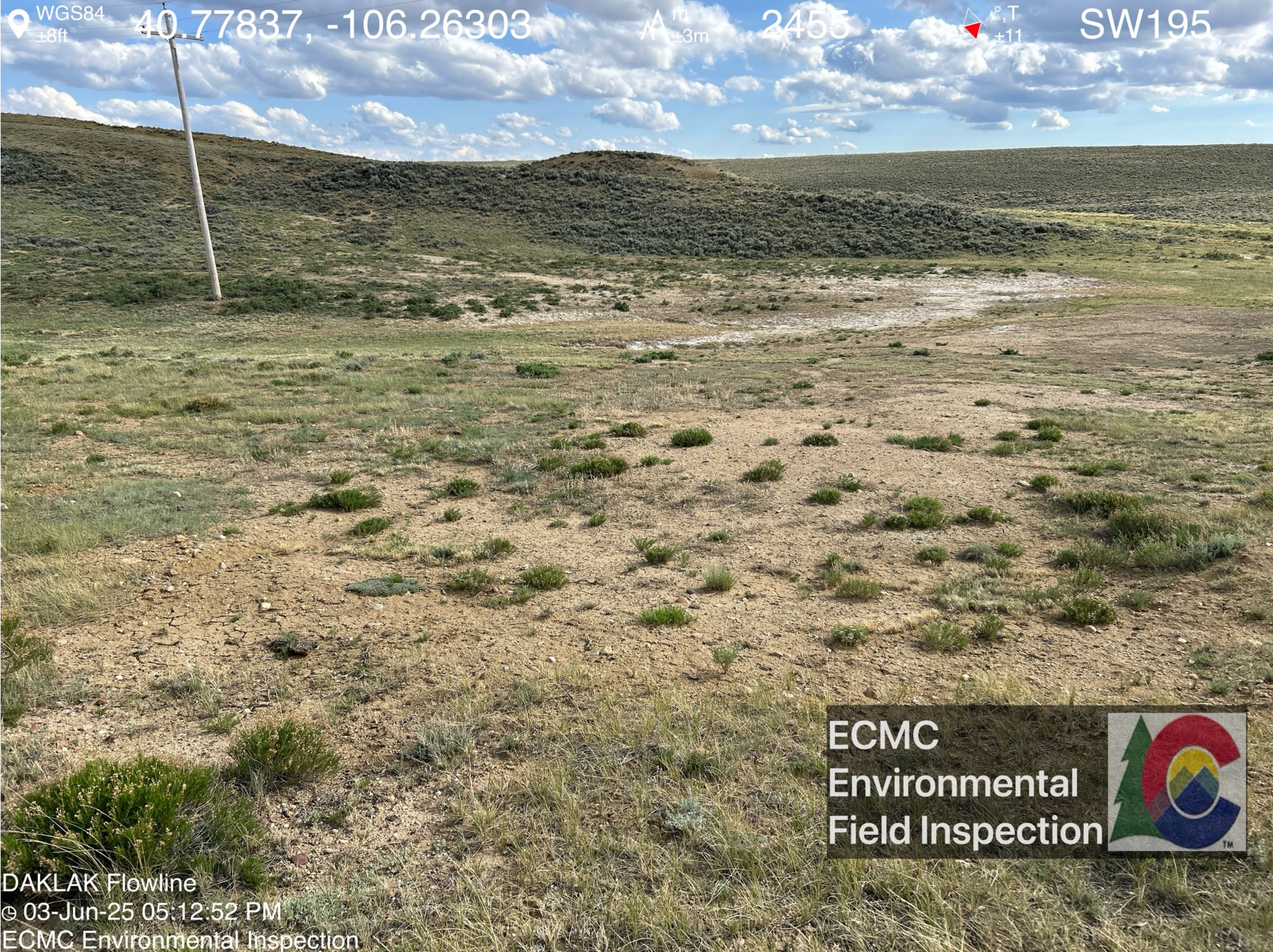


ECMC  
Environmental  
Field Inspection



DAKLAK Flowline  
© 03-Jun-25 05:11:26 PM  
ECMC Environmental Inspection

Looking at drainage towards spill location. Trash (a cooler) and salt crusting are visible adjacent to a culvert running under the access road.



WGS84  
±8ft

40.77837, -106.26303

m  
±3m

2455

°T  
±11

SW195

ECMC  
Environmental  
Field Inspection



DAKLAK Flowline  
© 03-Jun-25 05:12:52 PM  
ECMC Environmental Inspection

Looking at approximate spill location. The excavation and soil stockpile observed during previous inspections have been removed.

WGS84  $\pm 9\text{ft}$  40.77817, -106.26317  $\wedge^m_{\pm 3\text{m}}$  2453  $\triangle^{\circ, T}_{\pm 11}$  NE22



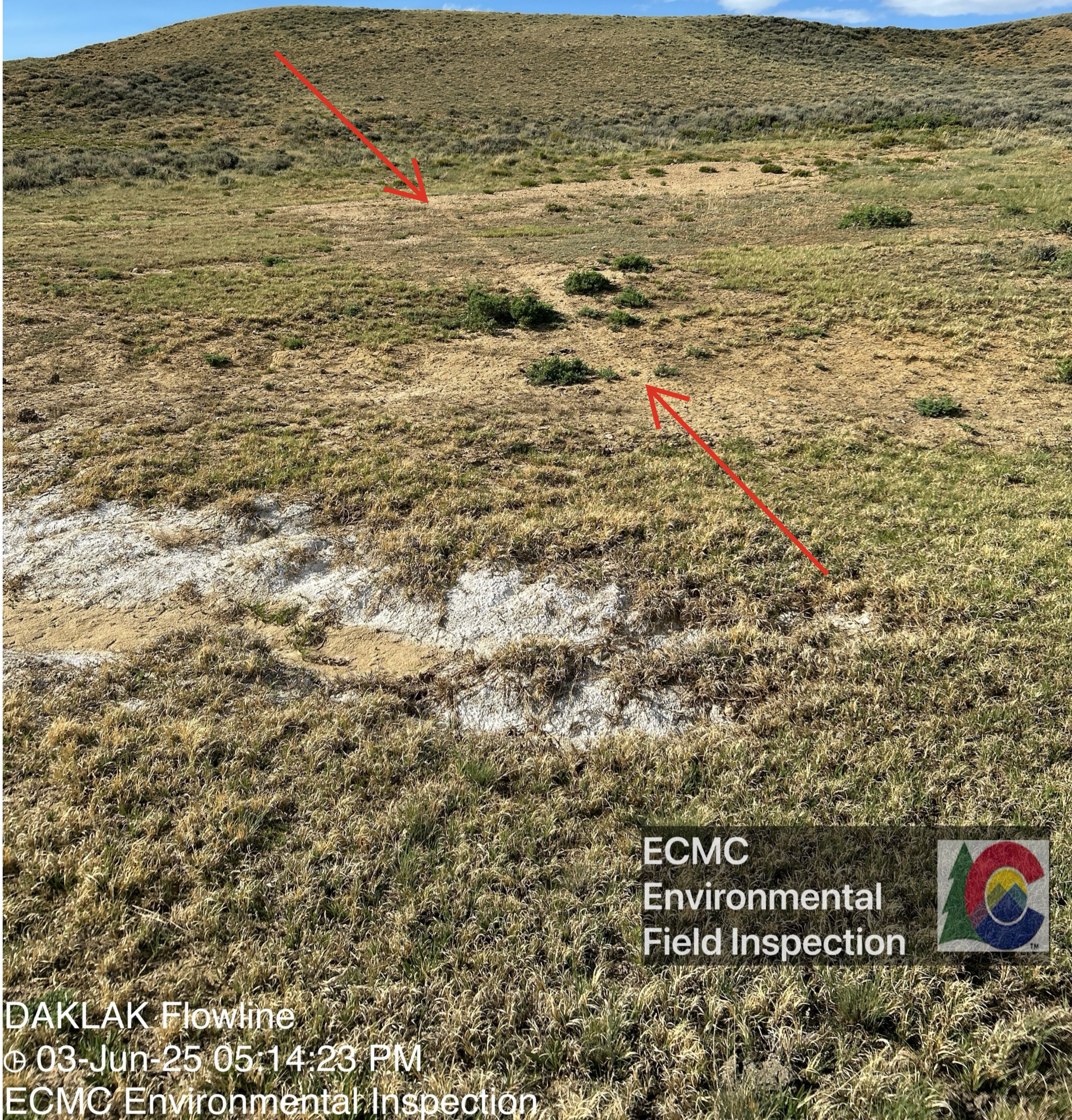
ECMC  
Environmental  
Field Inspection



DAKLAK Flowline  
© 03-Jun-25 05:13:59 PM  
ECMC Environmental Inspection

Looking at approximate spill location. Vegetation within the spill footprint appears limited in comparison to the surrounding field.

WGS84  $\pm 8ft$  40.77805, -106.26310  $\pm 3m$  2452  $\pm 11$  °, T N350



ECMC  
Environmental  
Field Inspection



DAKLAK Flowline  
© 03-Jun-25 05:14:23 PM  
ECMC Environmental Inspection

A line of less vegetation is visible in the approximate location of the flowline.

WGS84  
±14ft

40.77812, -106.26354

m  
±4m

2452

°T  
±11

SE124



ECMC  
Environmental  
Field Inspection



DAKLAK Flowline  
© 03-Jun-25 05:15:33 PM  
ECMC Environmental Inspection

Salt crusting is visible across the drainage area.