

WGS84
±14ft

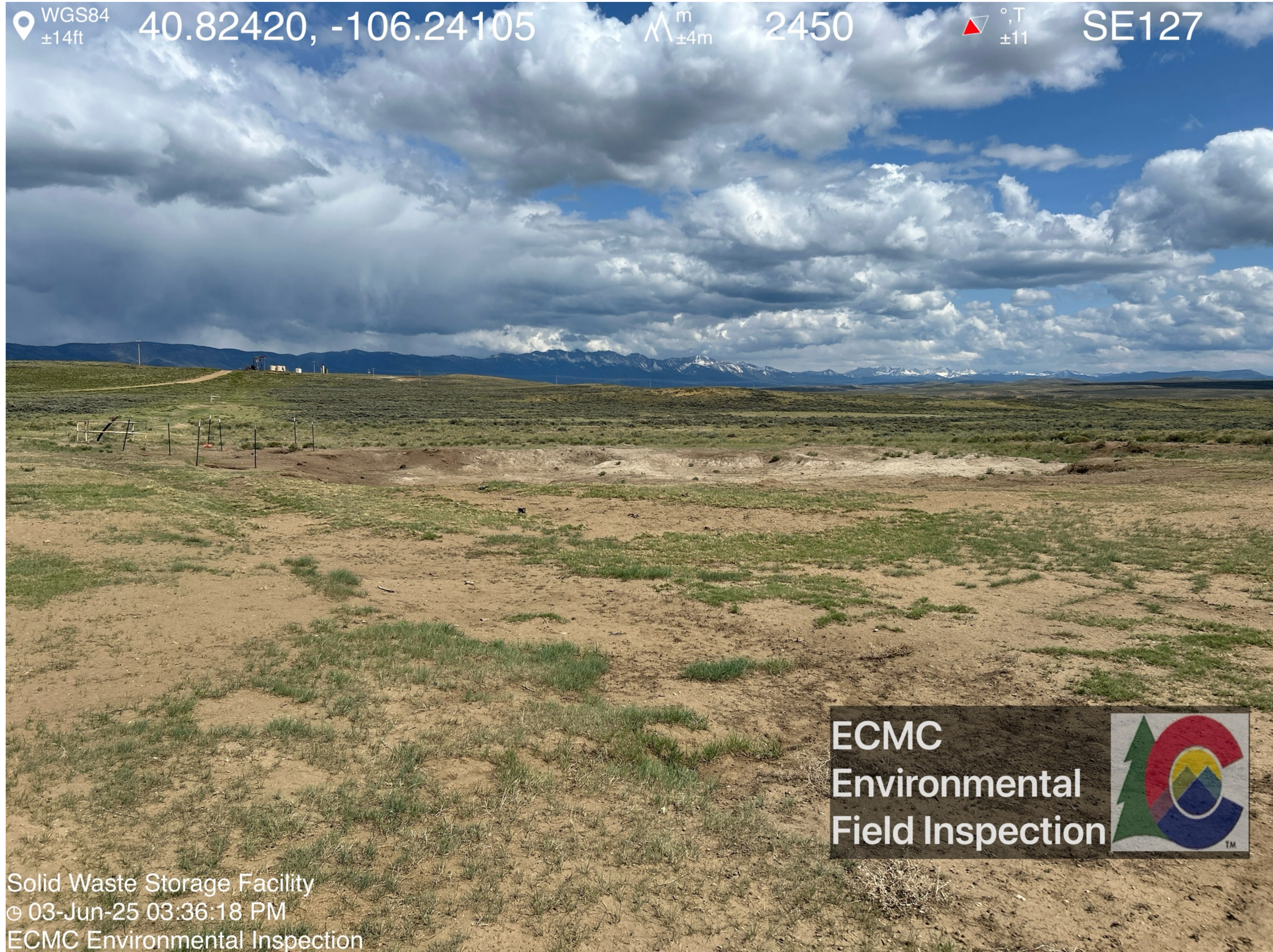
40.82420, -106.24105

m
±4m

2450

°T
±11

SE127



ECMC
Environmental
Field Inspection



Solid Waste Storage Facility
© 03-Jun-25 03:36:18 PM
ECMC Environmental Inspection

Looking at the Solid Waste Storage Facility excavation. No fencing is present. The excavation sidewalls appear to have undergone erosion.

WGS84 $\pm 14\text{ft}$ 40.82413, -106.24083 $\pm 3\text{m}$ 2449 ± 11 SE151



ECMC
Environmental
Field Inspection



Solid Waste Storage Facility
03-Jun-25 03:36:46 PM
ECMC Environmental Inspection

Trash (apparent remnants of the former liner) is visible.

WGS84 $\pm 12\text{ft}$ 40.82412, -106.24079 $\pm 3\text{m}$ 2449 ± 11 S166

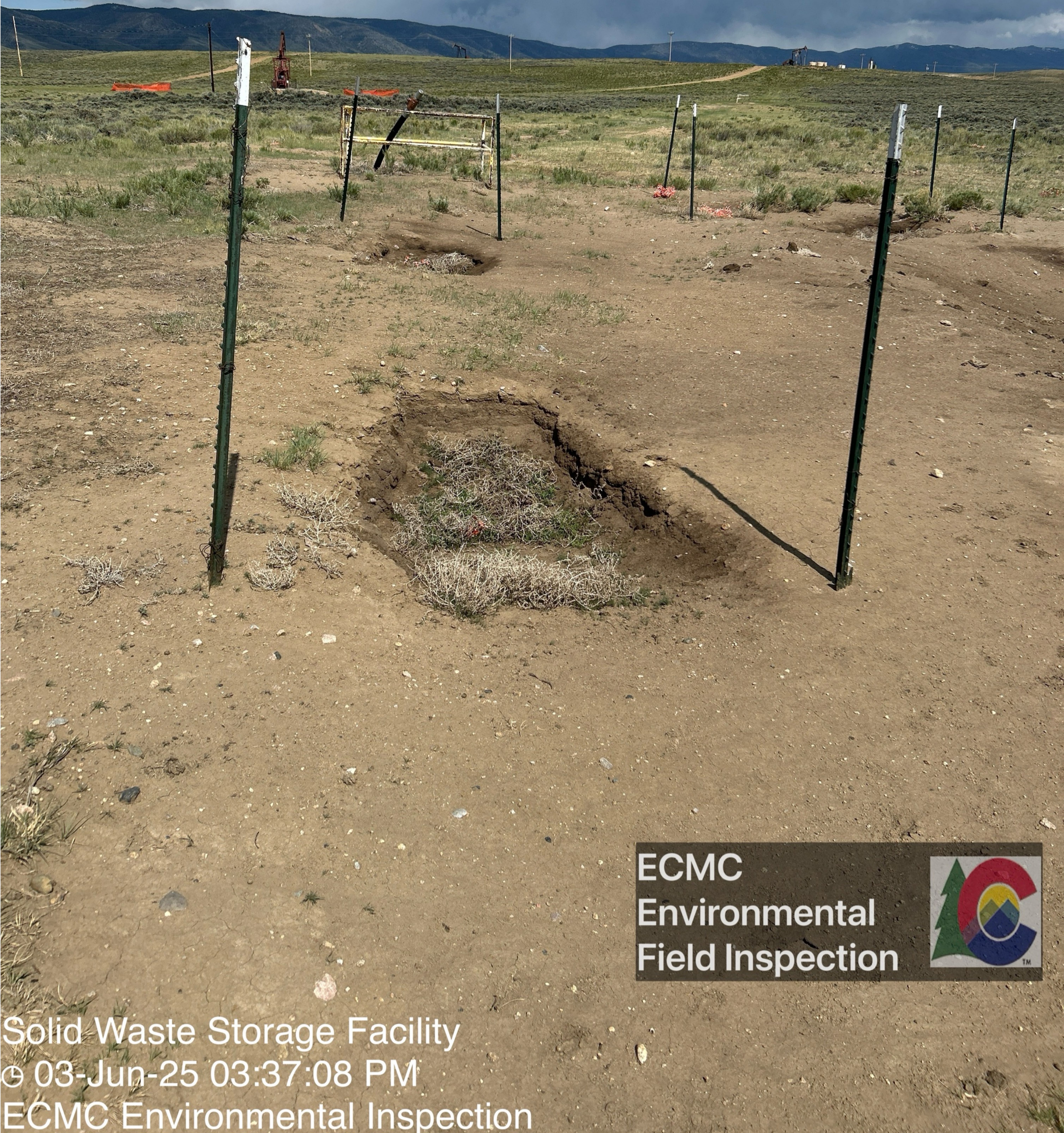


ECMC
Environmental
Field Inspection



Solid Waste Storage Facility
03-Jun-25 03:36:56 PM
ECMC Environmental Inspection

Rill erosion is visible along portions of the sidewalls of the excavation.



ECMC
Environmental
Field Inspection



Solid Waste Storage Facility
© 03-Jun-25 03:37:08 PM
ECMC Environmental Inspection

Multiple small excavations are visible adjacent to the large excavation. The small excavations have fence posts on either side; however, fencing is not present. Debris has collected within the small excavations.

WGS84 $\pm 18\text{ft}$ 40.82412, -106.24044 \wedge $\pm 5\text{m}$ 2449 \triangle ± 11 °, T SW224



ECMC
Environmental
Field Inspection



Solid Waste Storage Facility
© 03-Jun-25 03:37:54 PM
ECMC Environmental Inspection

Looking at the Solid Waste Storage Facility excavation.

WGS84 ±22ft 40.82410, -106.24044 2449 6W240



ECMC
Environmental
Field Inspection



Solid Waste Storage Facility
© 03-Jun-25 03:38:16 PM
ECMC Environmental Inspection

Trash (apparent remnants of orange construction fencing) and E&P waste (apparent segment of fiberglass flowline) are visible adjacent to the excavation.

WGS84 ±25ft 40.82410, -106.24056 Δ m ±7m 2449 °T ±11 SW197



ECMC
Environmental
Field Inspection



Solid Waste Storage Facility
© 03-Jun-25 03:38:42 PM
ECMC Environmental Inspection

Manure is visible within the excavation.

WGS84 $\pm 28\text{ft}$ 40.82396, -106.24084 $\pm 4\text{m}$ 2450 ± 11 NE73



ECMC
Environmental
Field Inspection



Solid Waste Storage Facility
© 03-Jun-25 03:41:01 PM
ECMC Environmental Inspection

Livestock/wildlife tracks are visible within the excavation.

WGS84 $\pm 12\text{ft}$ 40 82402, -106 24073 Δ $\pm 4\text{m}$ 2431 ± 11 NW318



ECMC
Environmental
Field Inspection



Solid Waste Storage Facility
03-Jun-25 03:41:46 PM
ECMC Environmental Inspection

A hole is visible in the excavation sidewall. Rill erosion is visible.