

WGS84  $\pm 12\text{ft}$  40.79353, -106.25421  $\wedge^m_{\pm 3\text{m}}$  2455  $\triangle^{\circ T}_{\pm 11}$  S190



MCCALLUM UNIT-610N79W 34NESW  
© 03-Jun-25 04:14:37 PM  
ECMC Environmental Inspection

Looking at the southern portion of the spill footprint, towards the MCCALLUM UNIT-610N79W 34NESW well.

WGS84  $\pm 16\text{ft}$  40.79336, -106.25418  $\Delta$   $\pm 4\text{m}$  2465  $\text{m}$   $\pm 11$   $^{\circ}, T$  SW214



ECMC  
Environmental  
Field Inspection



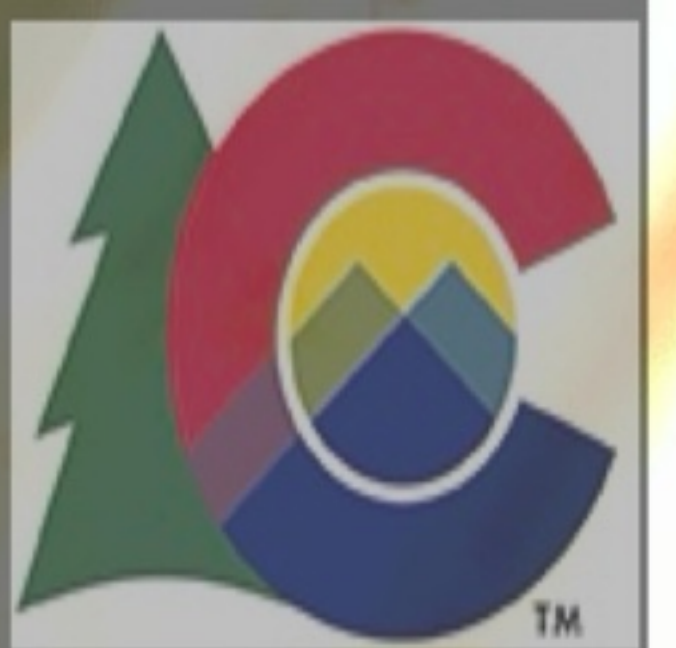
MCCALLUM UNIT-610N79W 34NESW  
© 03-Jun-25 04:14:59 PM  
ECMC Environmental Inspection

Signage with emergency contact number is peeling and becoming illegible at the MCCALLUM UNIT-610N79W 34NESW well.

WGS84 40.79335, -106.25421 469 ±12 SW220  
±19ft ±5ft



ECMC  
Environmental  
Field Inspection



MCCALLUM UNIT-610N79W 34NESW  
© 03-Jun-25 04:15:24 PM  
ECMC Environmental Inspection

Looking inside the MCCALLUM UNIT-610N79W 34NESW well containment. A sheen was not observed on the water within the containment. A tag reads "Do not operate".

WGS84  
±16ft

40.79319, -106.25409

m  
±4m

2465

°T  
±1

NW314



ECMC  
Environmental  
Field Inspection



MCCALLUM UNIT-610N79W 34NESW  
© 03-Jun-25 04:16:21 PM  
ECMC Environmental Inspection

Looking at the southern/topographically upgradient portion of the well pad, towards the MCCALLUM UNIT-610N79W 34NESW well.

WGS84  
±12ft

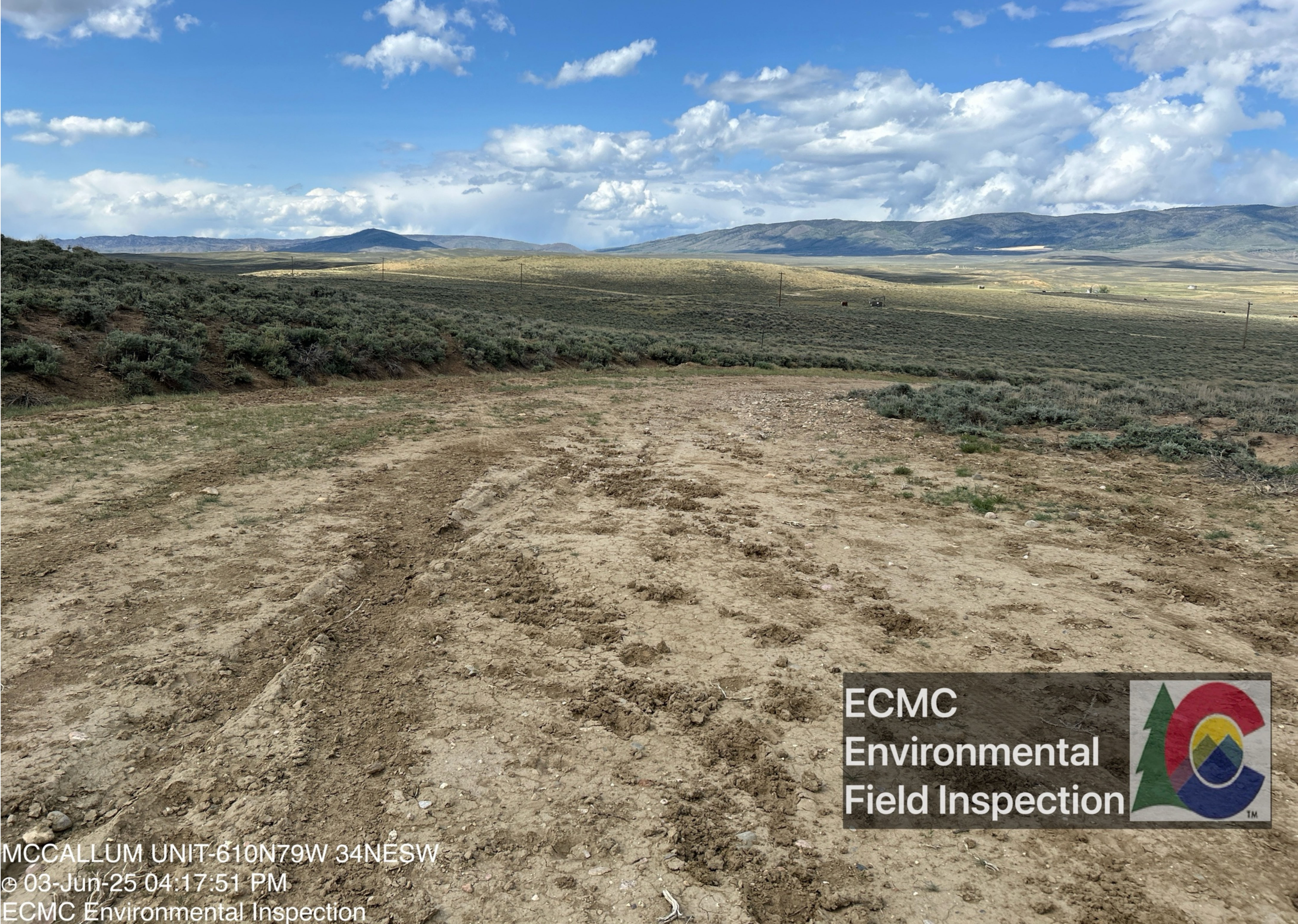
40.79351, -106.25422

m  
±3m

2458

°T  
±11

NE19



ECMC  
Environmental  
Field Inspection



MCCALLUM UNIT-610N79W 34NESW  
© 03-Jun-25 04:17:51 PM  
ECMC Environmental Inspection

Looking at the southern/topographically down-gradient portion of the well pad, towards the access road.

WGS84  $\pm 16\text{ft}$  40.79366, -106.25420  $\pm 4\text{m}$  2463  $\pm 11$  NE52



ECMC  
Environmental  
Field Inspection



MCCALLUM UNIT-610N79W 34NESW  
© 03-Jun-25 04:18:09 PM  
ECMC Environmental Inspection

Looking at the northern/topographically down-gradient portion of the spill footprint along access road, towards the approximate location of soil samples SS-9 and SS-10.

WGS84  $\pm 12\text{ft}$  40.79379, -106.25405  $\Lambda^m$   $\pm 3\text{m}$  2452  $\nabla$   $\Delta$   $\pm 1\text{m}$  NE62



ECMC  
Environmental  
Field Inspection



MCCALLUM UNIT-610N79W 34NESW  
© 03-Jun-25 04:19:41 PM  
ECMC Environmental Inspection

Looking at the northern/topographically down-gradient portion of the spill footprint along access road, towards the approximate location of soil sample SS-11.

WGS84  $\pm 12\text{ft}$  40.79392, -106.25366  $\Delta^m_{\pm 3\text{m}}$  2462  $\triangle^{\circ, T}_{\pm 11}$  NE57



ECMC  
Environmental  
Field Inspection



MCCALLUM UNIT-610N79W 34NESW  
© 03-Jun-25 04:20:12 PM  
ECMC Environmental Inspection

Looking at the northeastern/topographically down-gradient portion of the spill footprint along access road, towards the approximate location of soil sample SS-13.