

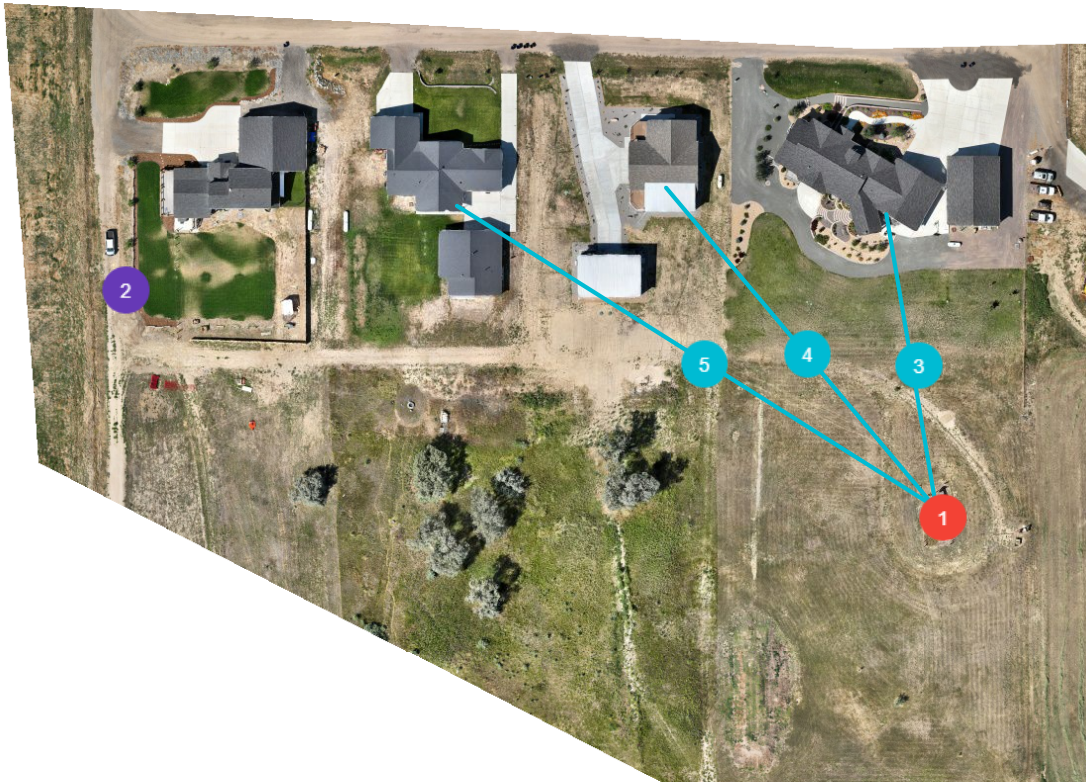
Energy & Carbon Management Commission

Max Serafini 'B' Location ID #318224 Annotation Report





Created on August 12, 2025

Captured on August 12, 2025






Point 

NAD83(2011) / Colorado North (ftUS) (US survey foot)

| Label | Title | Elevation | Lat, Long | Northing, Easting |
|---|--------------------|---------------|--------------------------|----------------------------------|
| 1  | Mac Serafini 'B' 1 | 4948.60 US ft | 40.1077830, -105.0107251 | 1282487.1 US ft, 3136854.8 US ft |
| 2  | Locked Access | 4937.38 US ft | 40.1082560, -105.0129504 | 1282656.0 US ft, 3136231.4 US ft |

Distance 

| Label | Title | Length | Horizontal | Vertical | Slope | Surface |
|---|---------|-----------|------------|-----------|----------------|-----------|
| 3  | House 1 | 222.50 ft | 220.87 ft | -26.87 ft | -6.94°, 12.16% | 243.01 ft |
| 4  | House 2 | 315.63 ft | 315.10 ft | -18.29 ft | -3.32°, 5.8% | 330.57 ft |
| 5  | House 3 | 429.55 ft | 429.45 ft | -9.33 ft | -1.24°, 2.17% | 485.92 ft |