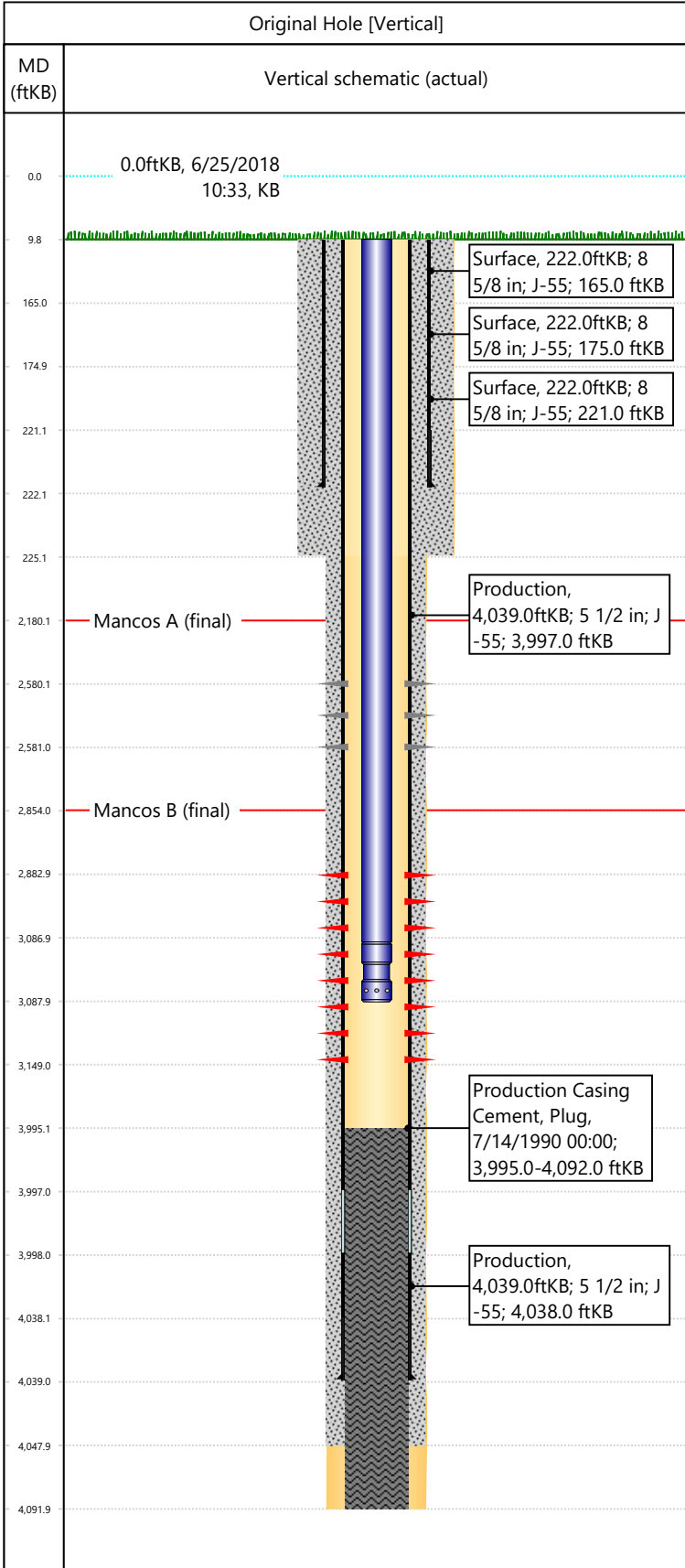


Well Name: DRAGON TRAIL UN 1329

API/UWI 05103094520000	Surface Legal Location NENW-S36-T2S-R103W-6PM	Field Name Dragon Trail	License #	State/Province CO	Well Configuration Type Vertical
Original KB Elevation (ft) 6,747	KB-Tubing Head Distance (ft) 10	Spud Date 7/9/1990 00:00	Rig Release Date 7/14/1990 00:00	PBDT (All) (KB) Original Hole - 3,995.0	Total Depth All (TVD) (KB) Original Hole - 4,092.0



Hole Size

Section Description Surface	Size (in) 12 1/4	Btm Depth (ftKB)
Section Description Surface	Size (in) 12 1/4	Btm Depth (ftKB) 225.0
Section Description Production	Size (in) 7 7/8	Btm Depth (ftKB) 4,092.0

Formations

Formation Name Mancos A	Final Top MD (ftKB) 2,180.0
Formation Name Mancos B	Final Top MD (ftKB) 2,854.0

Casing Strings

Csg Des	OD (in)	Wt/Len (lb/ft)	Grade	Set Depth (ftKB)
Surface	8 5/8	24.00	J-55	222.0
Production	5 1/2	15.50	J-55	4,039.0

Perforations

Date	Top (ftKB)	Btm (ftKB)	Linked Zone
8/15/1990	2580	2581	Mancos A, Original Hole
7/23/1990	2883	3149	Mancos B, Original Hole

Total

Tubing Strings

Tubing Description Tubing - Production	Run Date 9/18/1997	String Length (ft) 3,078.00	Set Depth (ftKB) 3,088.0
---	-----------------------	--------------------------------	-----------------------------

Item Des	Icon	Jts	OD (in)	Wt (lb/ft)	Grade	Len (ft)
Tubing		98	2 3/8	4.70	J-55	3077
Pump Seating Nipple w/ S/V and Cplg		1	2 3/8	4.70	J-55	1

Rod Strings

Rod Description	Run Date	String Length (ft)	Set Depth (ftKB)			
Item Des	Icon	Jts	OD (in)	Wt (lb/ft)	Grade	Len (ft)

Other In Hole

Des	Icon	OD (in)	Top (ftKB)	Btm (ftKB)	Run Date	Pull Date
-----	------	---------	------------	------------	----------	-----------

Cement

Description Surface Casing Cement	Proposed/Actual Run Actual	Type Casing	Top Depth (ftKB) 10.0
Description Production Casing Cement	Proposed/Actual Run Actual	Type Casing	Top Depth (ftKB) 10.0
Description Production Casing Cement	Proposed/Actual Run Actual	Type Plug	Top Depth (ftKB) 3,995.0