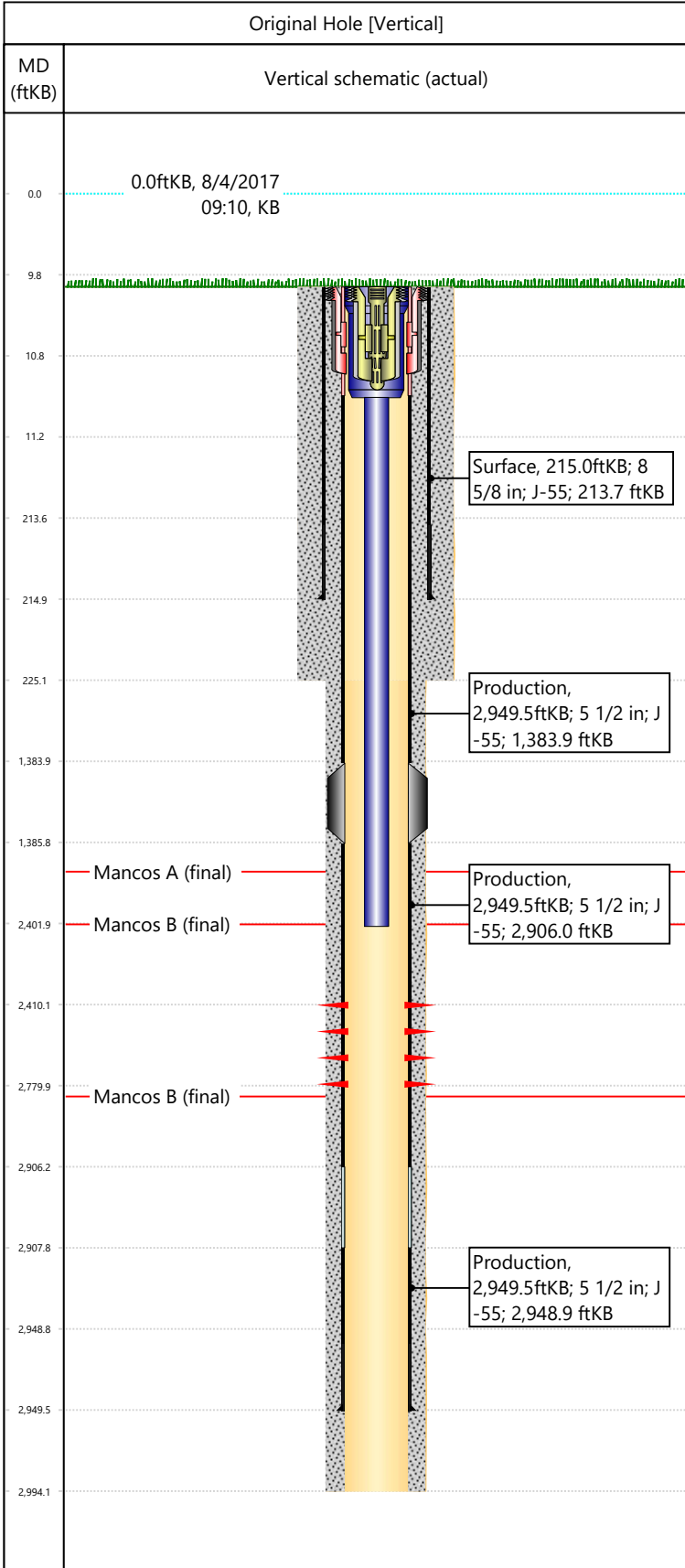


Well Name: DRAGON TRAIL UN 1120

API/UWI 05103093690000	Surface Legal Location SENE-S33-T2S-R102W-6PM	Field Name Dragon Trail	License #	State/Province CO	Well Configuration Type Vertical
Original KB Elevation (ft) 6,922	KB-Tubing Head Distance (ft) 10	Spud Date 5/31/1989 00:00	Rig Release Date 6/18/1989 00:00	PBDT (All) (KB) Original Hole - 2,878.0	Total Depth All (TVD) (KB) Original Hole - 2,994.0



Section Description	Size (in)	Btm Depth (ftKB)
Production	7 7/8	
Surface	12 1/4	
Surface	12 1/4	225.0
Production	7 7/8	2,994.0

Formation Name	Final Top MD (ftKB)
Mancos A	1,740.0
Mancos B	2,393.0
Mancos B	2,796.0

Csg Des	OD (in)	Wt/Len (lb/ft)	Grade	Set Depth (ftKB)
Surface	8 5/8	24.00	J-55	215.0
Production	5 1/2	15.50	J-55	2,949.5

Date	Top (ftKB)	Btm (ftKB)	Linked Zone
7/13/1989	2410	2780	Mancos B, Original Hole

Total

Tubing Description	Run Date	String Length (ft)	Set Depth (ftKB)
Tubing - Production	7/17/1989	2,392.00	2,402.0

Item Des	Icon	Jts	OD (in)	Wt (lb/ft)	Grade	Len (ft)
Tubing Hanger		1	4.95	2.76	J-55	1
Tubing		73	1.9	2.76	J-55	2391

Rod Description	Run Date	String Length (ft)	Set Depth (ftKB)

Des	Icon	OD (in)	Top (ftKB)	Btm (ftKB)	Run Date	Pull Date

Description	Proposed/Actual Run	Type	Top Depth (ftKB)
Surface Casing Cement	Actual	Casing	10.0
Production Casing Cement	Actual	Casing	10.0