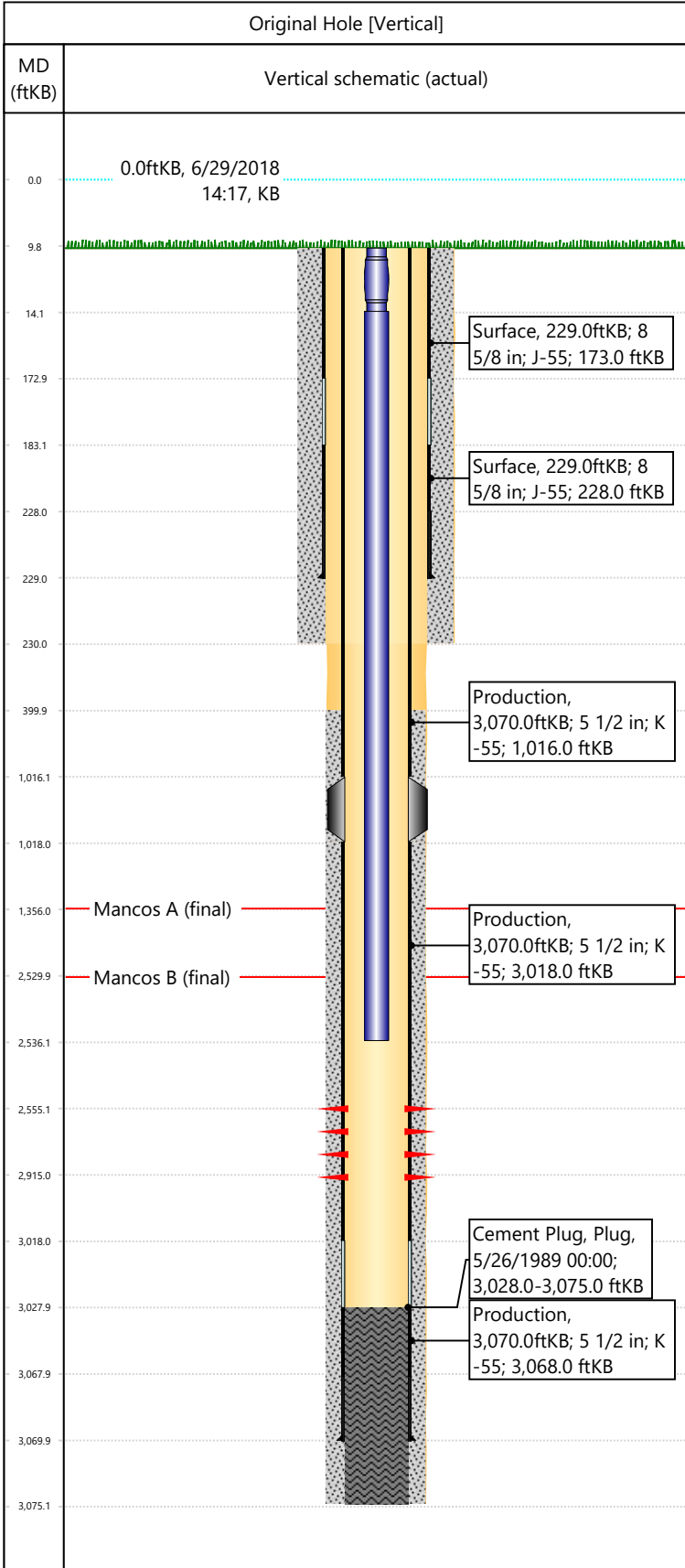


Well Name: DRAGON TRAIL UN 1099

API/UWI 05103093510000	Surface Legal Location NENW-S25-T2S-R102W-6PM	Field Name Dragon Trail	License #	State/Province CO	Well Configuration Type Vertical
Original KB Elevation (ft) 6,902	KB-Tubing Head Distance (ft) 10	Spud Date 5/22/1989 00:00	Rig Release Date 5/27/1989 00:00	PBTD (All) (KB) Original Hole - 3,028.0	Total Depth All (TVD) (KB) Original Hole - 3,075.0



Section Description	Size (in)	Btm Depth (ftKB)
Surface	12 1/4	
Surface	12 1/4	230.0
Production	7 7/8	3,075.0

Formation Name	Final Top MD (ftKB)
Mancos A	1,356.0
Mancos B	2,530.0

Csg Des	OD (in)	Wt/Len (lb/ft)	Grade	Set Depth (ftKB)
Surface	8 5/8	24.00	J-55	229.0
Production	5 1/2	15.50	K-55	3,070.0

Date	Top (ftKB)	Btm (ftKB)	Linked Zone
6/8/1989	2555	2915	Mancos B, Original Hole

Item Des	Icon	Jts	OD (in)	Wt (lb/ft)	Grade	Len (ft)
Blast Sub		1	1.9	2.76	J-55	4
Tubing		77	1.9	2.76	J-55	2522

Rod Description	Run Date	String Length (ft)	Set Depth (ftKB)
Tubing - Production	4/1/1993	2,526.00	2,536.0

Rod Description	Run Date	String Length (ft)	Set Depth (ftKB)			
Item Des	Icon	Jts	OD (in)	Wt (lb/ft)	Grade	Len (ft)

Des	Icon	OD (in)	Top (ftKB)	Btm (ftKB)	Run Date	Pull Date

Description	Proposed/Actual Run	Type	Top Depth (ftKB)
Surface Casing Cement	Actual	Casing	10.0
Production Casing Cement	Actual	Casing	400.0
Cement Plug	Actual	Plug	3,028.0