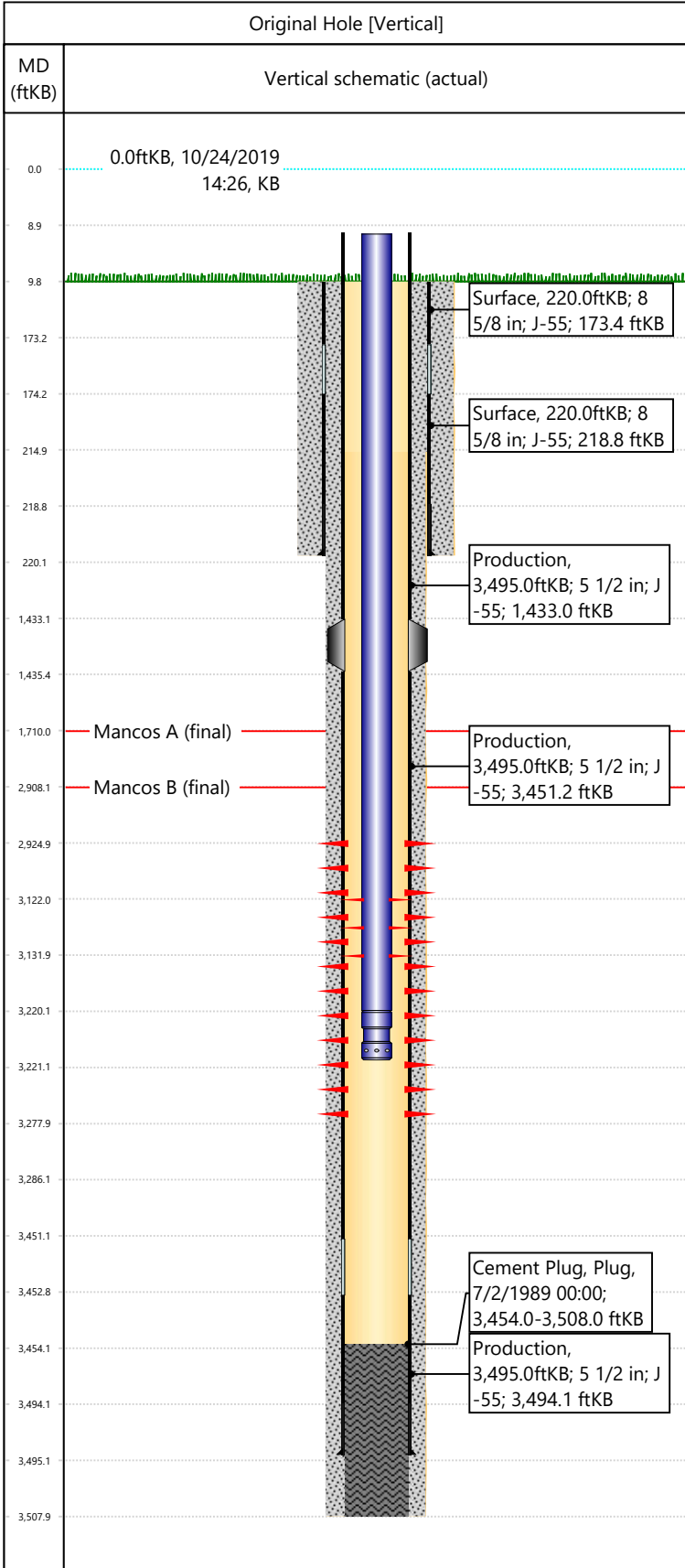


Well Name: DRAGON TRAIL UN 1080

API/UWI 05103093390000	Surface Legal Location NWNE-S22-T2S-R102W-6PM	Field Name Dragon Trail	License #	State/Province CO	Well Configuration Type Vertical
Original KB Elevation (ft) 6,627	KB-Tubing Head Distance (ft) 10	Spud Date 6/22/1989 00:00	Rig Release Date 7/1/1989 00:00	PBD (All) (KB) Original Hole - 3,454.0	Total Depth All (TVD) (KB) Original Hole - 3,508.0



Section Description	Size (in)	Btm Depth (ftKB)
Production	7 7/8	
Surface	12 1/4	
Surface	12 1/4	220.0
Production	7 7/8	3,508.0

Formation Name	Final Top MD (ftKB)
Mancos A	1,710.0
Mancos B	2,908.0

Csg Des	OD (in)	Wt/Len (lb/ft)	Grade	Set Depth (ftKB)
Surface	8 5/8	24.00	J-55	220.0
Production	5 1/2	15.50	J-55	3,495.0

Date	Top (ftKB)	Btm (ftKB)	Linked Zone
7/27/1989	2925	3278	Mancos B, Original Hole
2/6/2015	3122	3132	Mancos B, Original Hole

Total

Tubing Description	Run Date	String Length (ft)	Set Depth (ftKB)
Tubing - Production	6/2/2000	3,212.00	3,221.0

Item Des	Icon	Jts	OD (in)	Wt (lb/ft)	Grade	Len (ft)
Tubing		100	2 3/8	4.70	J-55	3211
Pump Seating Nipple		1	2 3/8	4.70	J-55	1

Rod Description	Run Date	String Length (ft)	Set Depth (ftKB)

Other In Hole	Icon	OD (in)	Top (ftKB)	Btm (ftKB)	Run Date	Pull Date

Description	Proposed/Actual Run	Type	Top Depth (ftKB)
Surface Casing Cement	Actual	Casing	10.0
Production Casing Cement	Actual	Casing	10.0
Cement Plug	Actual	Plug	3,454.0