

Wellhead Closure Checklist

COGCC Rule 911.a.(4) Environmental Site Closure Assessment Field Form

Additional attachments (optional):	Pit Closure	Tank Battery Closure	Flowline Closure 3-31-22	Partially Buried Vault Closure
Site Name & COGCC Facility Number: QC USX #A32-19	Date: 3-31-22	Remediation Project #: 22326		
Associated Wells: 05-123-32723	Age of Site: YEARS	Number of Photos Attached: 1		
Location: (GPS coordinates of wellhead or southeastern most wellhead for multiple) 40.446490, -104.577610				Estimated Facility Size (acres):
General Condition of Site: (General observations regarding housekeeping, corrosion, waste management, etc.) GOOD				
USCS Soil Type: SW	Estimated Depth to Groundwater: ~18-20'			
Hydrocarbon Impacted Soils / Spills: (Note estimated size and if impact appears to be surficial or extends to an unknown depth) NONE OBSERVED				
Salt Crusted Soils or Impacted Vegetation: (Note estimated size and if impact appears to be surficial or extends to an unknown depth) NONE OBSERVED				
Wellhead(s)				
Well API	05-123-32723			
Age	YEARS			
Condition of surface around wellhead	GOOD - PER CREW			
PID Readings	NA - EXCAVATED UPON ARRIVAL			
Condition of subsurface (excluding present PID Readings)	GOOD			
PID Readings	1.8	2.7	3.0	1.7 3.5
Sample taken? Location/Sample ID	WH-SS-01	WH-SS-02	WH-SS-03	WH-SS-04 WH-FS-01
Photo Number(s)	SEE PHOTOLOG			
Other observations regarding wellheads: WELL CASING CUT/CAPPED FOLLOWING ASSESSMENT				
Summary				
Was impacted soil identified? <input checked="" type="radio"/> No Yes - less than 10 cubic yards Yes - more than 10 cubic yards				
Total number of samples field screened: 5		Total number of samples collected: 5		
Highest PID Reading: 3.5		Total number of samples submitted to lab for analysis: 1		
If more than 10 cubic yards of impacted soil were observed:				
Vertical extent:		Estimated spill volume:		
Lateral extent: N/A		Volume of soil removed:		
Is additional investigation required?				
Was groundwater encountered during the investigation? <input checked="" type="radio"/> No Yes - not impacted or in contact with impacted soils Yes - groundwater impacted and/or in contact with impacted soils				
Measured depth to groundwater:		Was remedial groundwater removal conducted? Yes No		
Date Groundwater was encountered:		Commencement date of removal:		
Sheen on groundwater? Yes No		Volume of groundwater removed prior to sampling:		
Free product observed? Yes No		Volume of groundwater removed post sampling:		
Total number of samples collected:		Total Volume of groundwater removed:		
Total number of samples submitted to lab for analysis:				

Flowline Closure Checklist

COGCC Rule 911.a.(4) Environmental Site Closure Assessment Field Form

Additional Attachments:	Tank Battery Closure	Wellhead Closure 3-31-22	Pit Closure	Partially Buried Vault Closure
Site Name & COGCC Facility Number: QC USX #A32-19		Date: 3-31-22		Remediation Project #: 22326
Associated Wells: 05-123-32723		Age of Site: YEARS		Number of Photos Attached: 1
Starting point: (GPS coordinates and descriptions) 40.446492, -104.577625 AT WELL				
End point: (GPS coordinates and descriptions) 40.449482, -104.580947 AT SEPARATOR				
USCS Soil Type: SW			Estimated Depth to Groundwater: ~18-20'	
Hydrocarbon Impacted Soils / Spills: (Note estimated size and if impact appears to be surficial or extends to an unknown depth) NONE OBSERVED				
Salt Crusted Soils or Impacted Vegetation: (Note estimated size and if impact appears to be surficial or extends to an unknown depth) NONE OBSERVED				
Flowlines				
Flowline type	0.6 W			
Depth	~3'			
Age	YEARS			
Length	~1675'			
Construction Material	STEEL			
Were flowlines pulled?	NO - ABANDONED IN PLACE			
Visual Integrity of lines	GOOD - PER INTEGRITY TEST			
Visual impacts if trenched	N/A			
PID Readings if trenched	2.8			
Sample taken? Location/Sample ID#	FL-SS-01			
Photo Number(s)	SEE PHOTOLOG			
Other observations regarding on location flowlines: FLOWLINE ABANDONED IN PLACE. PT. B (OSEP) ASSESSED.				
Summary				
Was impacted soil identified? <input checked="" type="radio"/> No Yes - less than 10 cubic yards Yes - more than 10 cubic yards				
Total number of samples field screened: 1		Total number of samples collected: 1		
Highest PID Reading: 2.8		Total number of samples submitted to lab for analysis: 1		
If more than 10 cubic yards of impacted soil were observed:				
Vertical extent:		Estimated spill volume:		
Lateral extent: N/A		Volume of soil removed:		
Is additional investigation required?				
Was groundwater encountered during the investigation? <input checked="" type="radio"/> No Yes - not impacted or in contact with impacted soils Yes - groundwater impacted and/or in contact with impacted soils				
Measured depth to groundwater:		Was remedial groundwater removal conducted? Yes No		
Date Groundwater was encountered:		Commencement date of removal:		
Sheen on groundwater? Yes No		Volume of groundwater removed prior to sampling:		
Free product observed? Yes No		Volume of groundwater removed post sampling:		
Total number of samples collected:		Total Volume of groundwater removed:		
Total number of samples submitted to lab for analysis:				



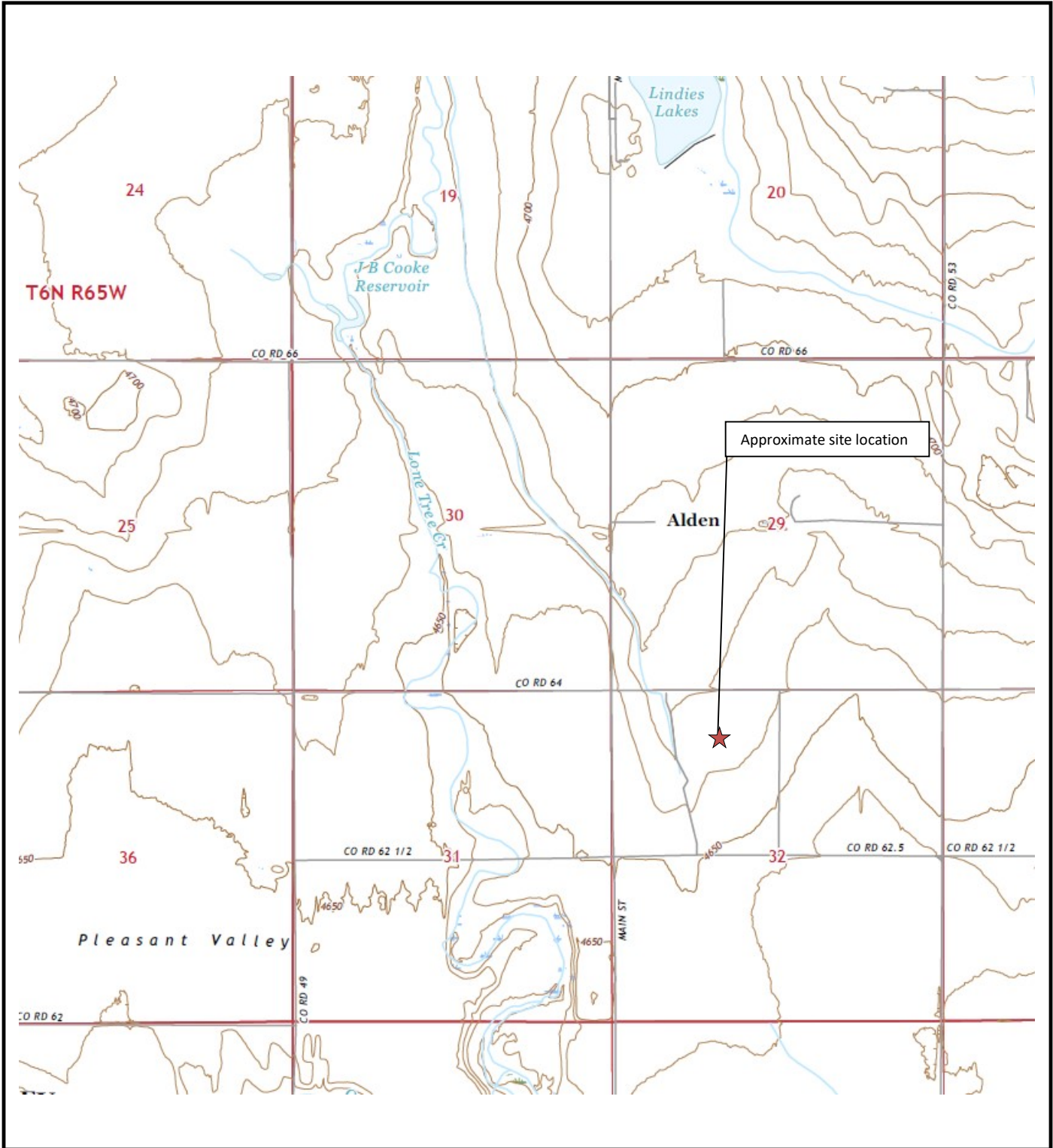
FIGURES

Figure 1: Topographic Site Location Map

Figure 2: Aerial Site Location Map

Figure 3: Soil Analytical Map

Figure 4: Polycyclic Aromatic Hydrocarbons Map



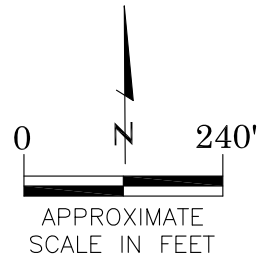
	<p align="center">Topographic Site Location Map QC USX #A32-19 Closure Assessment 40.446490 / -104.577610 NE¼ NW¼ SEC.32 T6N R64W 6PM Weld County, Colorado API # 05-123-32723 Remediation # 22326</p>	<p>EAGLE ENVIRONMENTAL CONSULTING, INC.</p>
<p>Source: USGS 7.5 Minute Topographic Map, Kersey, CO Quadrangle 2022</p>	<p align="center">Figure 1</p>	

64



LEGEND

- FORMER QC USX #A32-19 WELLHEAD (PLUGGED AND ABANDONED)
- ASSOCIATED SEPARATOR
- APPROXIMATE FLOWLINE LOCATION



AERIAL SITE LOCATION MAP

QC USX #A32-19
 CLOSURE ASSESSMENT
 40.446490 / -104.577610
 NE¼ NW¼ SEC.32 T6N R64W 6PM
 WELD COUNTY, COLORADO
 API # 05-123-32723
 REMEDIATION # 22326

FIG. NO.
2

DRAWN BY:
CT



EAGLE
 ENVIRONMENTAL
 CONSULTING, INC.
 8000 W 44th Ave, Wheat Ridge, CO 80033
 Ph: 303-433-0479 • F: 303-325-5449



FL-SS-01@3'
 03/31/22
 3'
 B = <0.00200
 T = <0.00200
 E = <0.00200
 X = <0.00200
 G = <0.200
 D = <25.0
 R = <100
 1,2,4-TMB = <0.00200
 1,3,5-TMB = <0.00200
 Brn= 0.120
 EC = 0.229
 SAR= 0.482
 pH = 8.23

WH-FS-01@6'
 03/31/22
 6'
 B = <0.00200
 T = <0.00200
 E = <0.00200
 X = <0.00200
 G = <0.200
 D = <25.0
 R = <100
 1,2,4-TMB = <0.00200
 1,3,5-TMB = <0.00200
 Brn= 0.393
 EC = 0.934
 SAR= 1.33
 pH = 7.81

LEGEND

- WELLHEAD ASSESSMENT BOUNDARIES
- APPROXIMATE FLOWLINE LOCATION
- APPROXIMATE LOCATION OF SOIL SAMPLES FIELD SCREENED, ONLY, WITH PHOTOIONIZATION DETECTOR
- APPROXIMATE LOCATION OF SOIL SAMPLES SUBMITTED FOR LABORATORY ANALYSIS

PARAMETERS

SAMPLE LOCATION
DATE
DEPTH (FEET)
 B = BENZENE (mg/kg)
 T = TOLUENE (mg/kg)
 E = ETHYLBENZENE (mg/kg)
 X = TOTAL XYLENES (mg/kg)
 G = TPH-GRO (mg/kg)
 D = TPH-DRO (mg/kg)
 R = TPH-RRO (mg/kg)
 1,2,4-TMB = 1,2,4 TRIMETHYLBENZENE (mg/kg)
 1,3,5-TMB = 1,3,5 TRIMETHYLBENZENE (mg/kg)
 Brn= BORON (mg/L)
 EC = SPECIFIC CONDUCTANCE (mmhos/cm)
 SAR= SODIUM ADSORPTION RATIO
 pH = pH (pH UNITS)

mg/kg = MILLIGRAMS PER KILOGRAM
 mg/L = MILLIGRAMS PER LITER
 mmhos/cm = MILLIMHOS PER CENTIMETER

TPH-GRO = TOTAL PETROLEUM HYDROCARBONS - GASOLINE RANGE ORGANICS
 TPH-DRO = TOTAL PETROLEUM HYDROCARBONS - DIESEL RANGE ORGANICS
 TPH-RRO = TOTAL PETROLEUM HYDROCARBONS - RESIDUAL RANGE ORGANICS

NOTES:
 VALUES PRESENTED WITH A LESS THAN SYMBOL (<) DID NOT CONTAIN CONCENTRATIONS AT OR ABOVE LABORATORY DETECTION LIMITS.

VALUES PRESENTED IN **BOLD** EXCEED COGCC TABLE 915-1 REGULATORY LIMITS.

COGCC = COLORADO OIL AND GAS CONSERVATION COMMISSION

SOIL ANALYTICAL MAP
 QC USX #A32-19
 CLOSURE ASSESSMENT
 40.446490 / -104.577610
 NE¼ NW¼ SEC.32 T6N R64W 6PM
 WELD COUNTY, COLORADO
 API # 05-123-32723
 REMEDIATION # 22326

DRAWN BY:

CT

FIG. NO.

3



EAGLE
 ENVIRONMENTAL
 CONSULTING, INC.

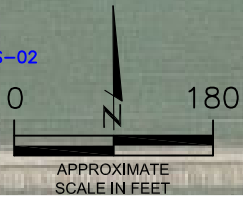
8000 W 44th Ave, Wheat Ridge, CO 80033
 Ph: 303-433-0479 • F: 303-325-5449



FL-SS-01@3'
 03/31/22
 3'
 ND = <0.00067
 1-Methylnaphthalene = ND
 2-Methylnaphthalene = ND
 Acenaphthene = ND
 Anthracene = ND
 Benzo(a)anthracene = ND
 Benzo(a)pyrene = ND
 Benzo(b)fluoranthene = ND
 Benzo(k)fluoranthene = ND
 Chrysene = ND
 Dibenzo(a,h)anthracene = ND
 Fluoranthene = ND
 Fluorene = ND
 Indeno(1,2,3-CD)pyrene = ND
 Naphthalene = ND
 Pyrene = ND

WH-FS-01@6'
 03/31/22
 6'
 ND = <0.00067
 1-Methylnaphthalene = ND
 2-Methylnaphthalene = ND
 Acenaphthene = ND
 Anthracene = ND
 Benzo(a)anthracene = ND
 Benzo(a)pyrene = ND
 Benzo(b)fluoranthene = ND
 Benzo(k)fluoranthene = ND
 Chrysene = ND
 Dibenzo(a,h)anthracene = ND
 Fluoranthene = ND
 Fluorene = ND
 Indeno(1,2,3-CD)pyrene = ND
 Naphthalene = ND
 Pyrene = ND

WH-SS-01
 WH-SS-04
 WH-FS-01
 WH-SS-03
 WH-SS-02



LEGEND

- WELLHEAD ASSESSMENT BOUNDARIES
- APPROXIMATE FLOWLINE LOCATION
- SS-02 APPROXIMATE LOCATION OF SOIL SAMPLES FIELD SCREENED, ONLY, WITH PHOTOIONIZATION DETECTOR
- SS-02 APPROXIMATE LOCATION OF SOIL SAMPLES SUBMITTED FOR LABORATORY ANALYSIS

PARAMETERS

SAMPLE LOCATION
 DATE SAMPLE COLLECTED
 APPROXIMATE DEPTH
 POLYCYCLIC AROMATIC HYDROCARBONS (PAHs) (mg/kg)

mg/kg = MILLIGRAMS PER KILOGRAM
 ND = NON-DETECT

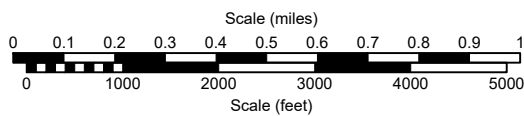
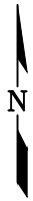
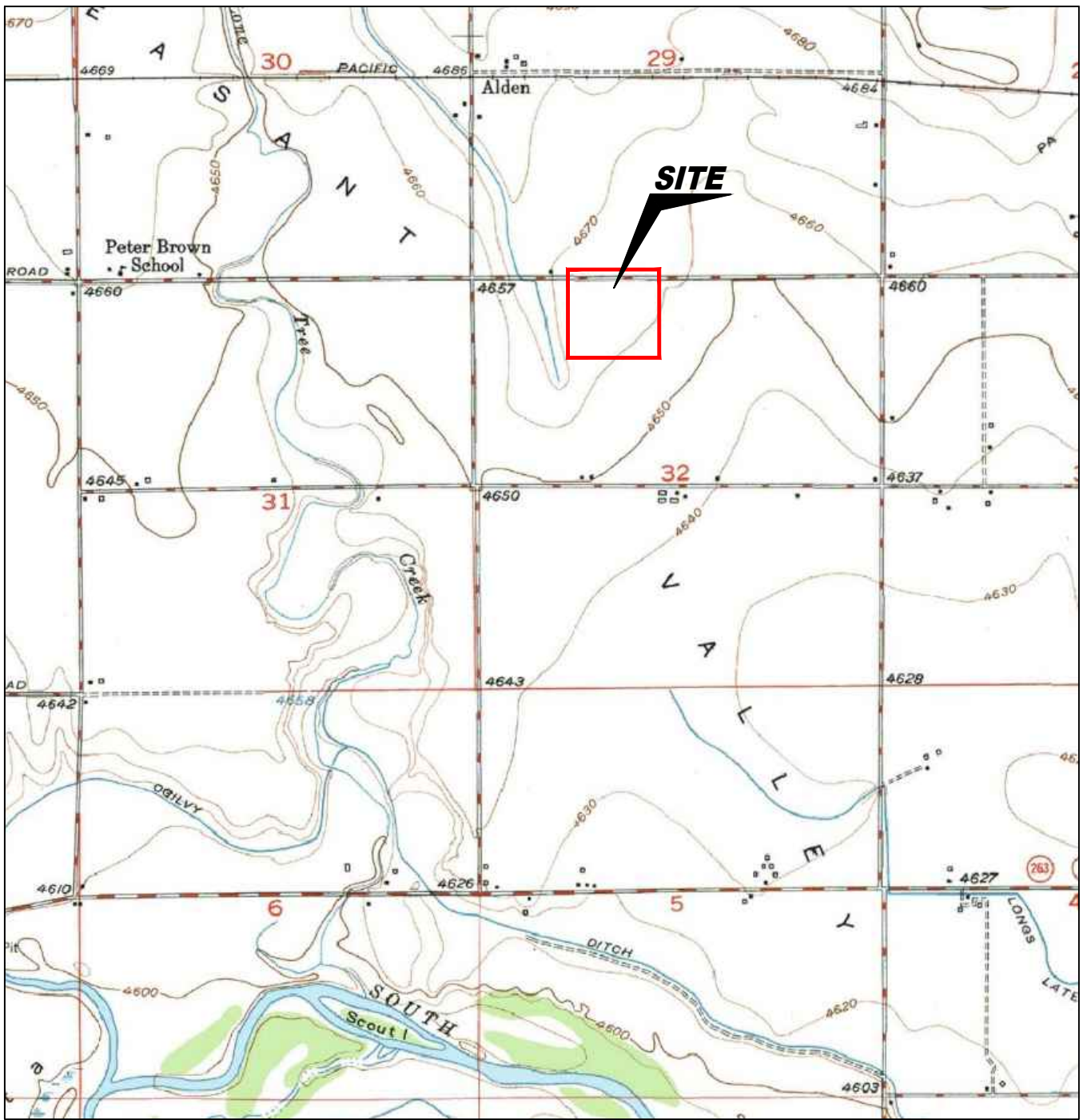
NOTES:
 VALUES PRESENTED WITH A LESS THAN SYMBOL (<) DID NOT CONTAIN CONCENTRATIONS AT OR ABOVE LABORATORY DETECTION LIMITS.

VALUES PRESENTED IN **BOLD** EXCEED COGCC TABLE 915-1 REGULATORY LIMITS.
 COGCC = COLORADO OIL AND GAS CONSERVATION COMMISSION

POLYCYCLIC AROMATIC HYDROCARBONS MAP
 QC USX #A32-19
 CLOSURE ASSESSMENT
 40.446490 / -104.577610
 NE¼ NW¼ SEC.32 T6N R64W 6PM
 WELD COUNTY, COLORADO
 API # 05-123-32723
 REMEDIATION # 22326

DRAWN BY:
 CT
 FIG. NO.
 4

EAGLE
 ENVIRONMENTAL
 CONSULTING, INC.
 8000 W 44th Ave, Wheat Ridge, CO 80033
 Ph: 303-433-0479 • F: 303-325-5449



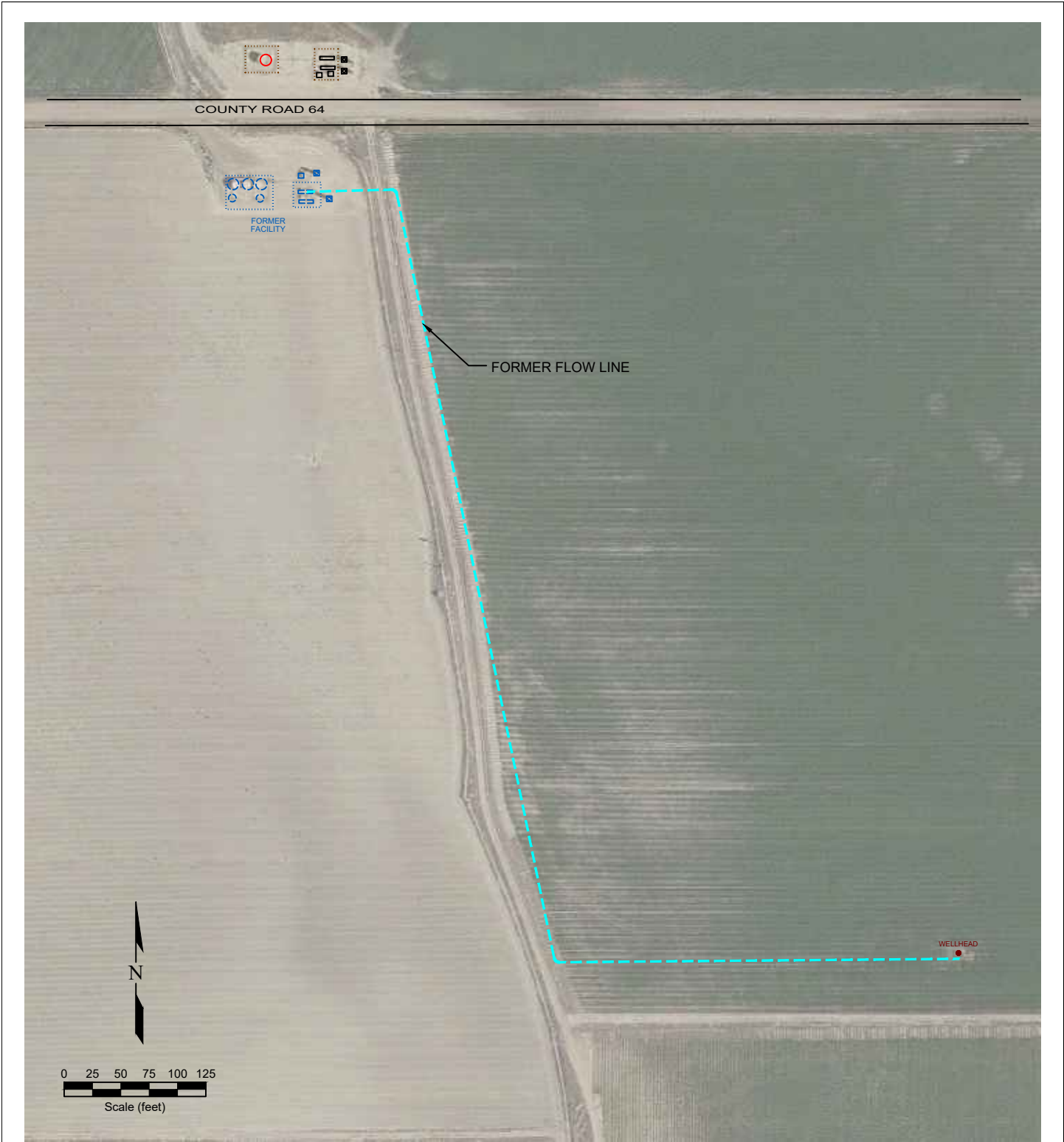
USGS 7.5 MINUTE SERIES (TOPOGRAPHIC)

Figure 1
SITE LOCATION MAP

NOBLE ENERGY, INC. ~ QC A 32-19
 NENW Sec. 32, T6N, R64W, 6th PM
 Weld County, Colorado
 40.446490°, -104.577610°

Project # C022-058	API # 05-123-32723	Facility ID 420814
Date 8/4/25	Remediation # 22326	Filename 22058TFL





LEGEND

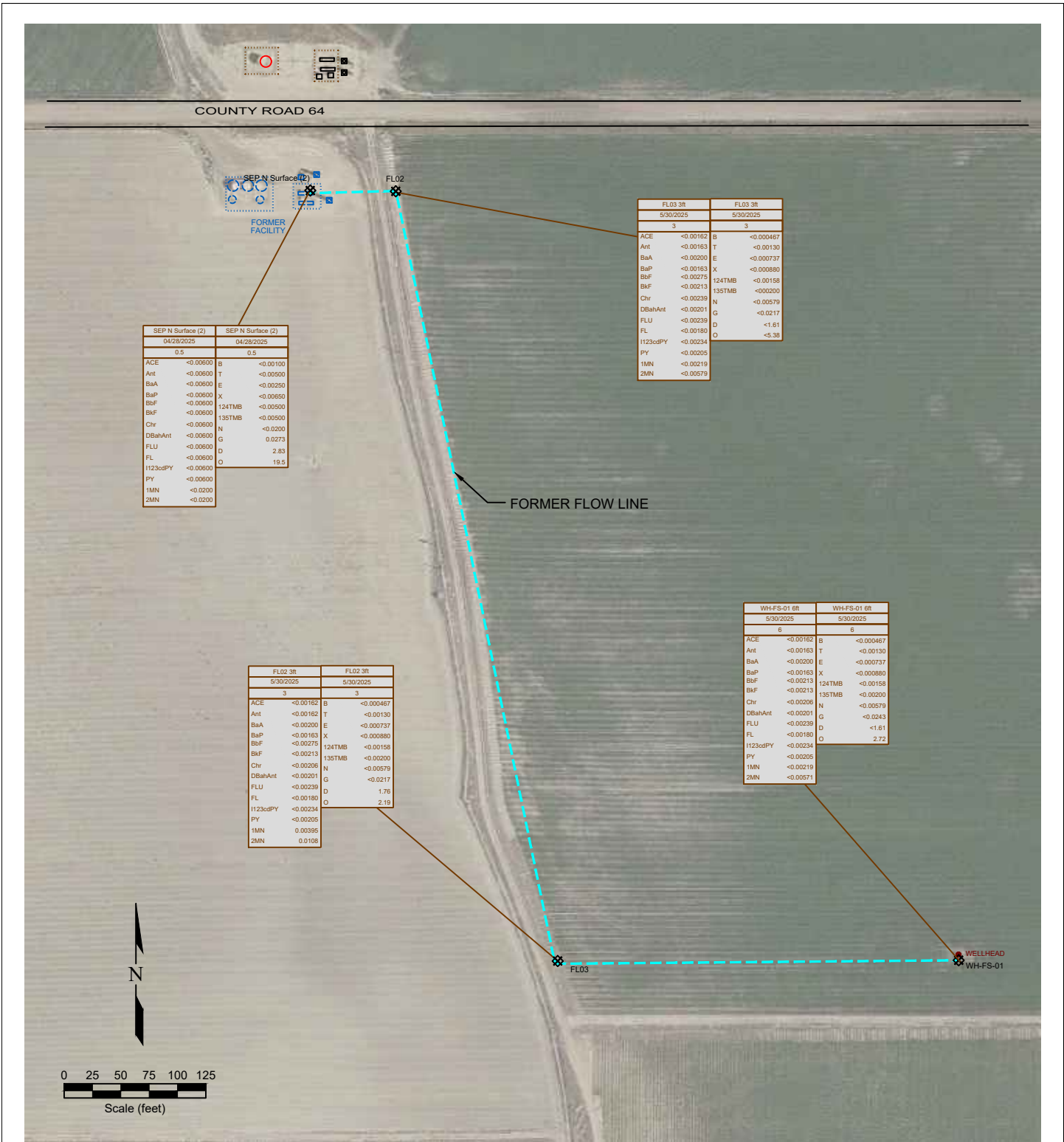
- WELL HEAD LOCATION
- ABOVE GROUND STORAGE TANK
- ▲ PID READING LOCATION
- FORMER FACILITY
- FORMER FLOW LINE
- FENCE LINE
- CONTAINMENT BERM
- CONTAINMENT WALL

Figure 2
SITE MAP

NOBLE ENERGY, INC. ~ QC A 32-19
 NENW Sec. 32, T6N, R64W, 6th PM
 Weld County, Colorado
 40.446490°, -104.577610°

Project No. C022-058	API # 05-123-32723	Facility # 420814
Date 8/4/25	Remediation # 22326	Filename 22058Q2FL





SEP N Surface (2)		SEP N Surface (2)	
04/28/2025		04/28/2025	
0.5		0.5	
ACE	<0.00600	B	<0.00100
Ant	<0.00600	T	<0.00500
BaA	<0.00600	E	<0.00250
BaP	<0.00600	X	<0.00650
BbF	<0.00600	124TMB	<0.00500
Chr	<0.00600	135TMB	<0.00500
DBahAnt	<0.00600	N	<0.00200
FLU	<0.00600	G	0.0273
FL	<0.00600	D	2.83
I123cdPY	<0.00600	O	19.5
PY	<0.00600		
1MN	<0.0200		
2MN	<0.0200		

FL02 3R		FL02 3R	
5/30/2025		5/30/2025	
3		3	
ACE	<0.00162	B	<0.000467
Ant	<0.00163	T	<0.00130
BaA	<0.00200	E	<0.000737
BaP	<0.00163	X	<0.000880
BbF	<0.00275	124TMB	<0.00158
BbF	<0.00213	135TMB	<0.00200
Chr	<0.00239	N	<0.00579
DBahAnt	<0.00201	G	<0.0217
FLU	<0.00239	D	<1.61
FL	<0.00180	O	<5.38
I123cdPY	<0.00234		
PY	<0.00205		
1MN	<0.00219		
2MN	<0.00579		

FL02 3R		FL02 3R	
5/30/2025		5/30/2025	
3		3	
ACE	<0.00162	B	<0.000467
Ant	<0.00162	T	<0.00130
BaA	<0.00200	E	<0.000737
BaP	<0.00163	X	<0.000880
BbF	<0.00275	124TMB	<0.00158
BbF	<0.00213	135TMB	<0.00200
Chr	<0.00206	N	<0.00579
DBahAnt	<0.00201	G	<0.0217
FLU	<0.00239	D	1.76
FL	<0.00180	O	2.19
I123cdPY	<0.00234		
PY	<0.00205		
1MN	0.00035		
2MN	0.0108		

WH-FS-01 6ft		WH-FS-01 6ft	
5/30/2025		5/30/2025	
6		6	
ACE	<0.00162	B	<0.000467
Ant	<0.00163	T	<0.00130
BaA	<0.00200	E	<0.000737
BaP	<0.00163	X	<0.000880
BbF	<0.00213	124TMB	<0.00158
BbF	<0.00213	135TMB	<0.00200
Chr	<0.00206	N	<0.00579
DBahAnt	<0.00201	G	<0.0243
FLU	<0.00239	D	<1.61
FL	<0.00180	O	2.72
I123cdPY	<0.00234		
PY	<0.00205		
1MN	<0.00219		
2MN	<0.00571		

LEGEND

- WELL HEAD LOCATION
- ABOVE GROUND STORAGE TANK
- ⊗ SOIL SAMPLE LOCATION
- FORMER FLOW LINE
- FENCE LINE
- CONTAINMENT BERM
- CONTAINMENT WALL

SAMPLE ID	SAMPLE ID	SAMPLE ID	SAMPLE ID		
DATE	DATE	DATE	DATE		
DEPTH	DEPTH	DEPTH	DEPTH		
ACE	<0.00500	ACENAPHTHENE (mg/kg)	B	<0.00200	BENZENE (mg/kg)
Ant	<0.00500	ANTHRACENE (mg/kg)	T	<0.00500	TOLUENE (mg/kg)
BaA	<0.00500	BENZO (A) ANTHRACENE (mg/kg)	E	<0.00500	ETHYLBENZENE (mg/kg)
BaP	<0.00500	BENZO (A) PYRENE (mg/kg)	X	<0.010	TOTAL XYLENE (mg/kg)
BbF	<0.00500	BENZO (B) FLUORANTHENE (mg/kg)	124TMB	<0.00500	1,2,4-TRIMETHYLBENZENE (mg/kg)
BbF	<0.00500	BENZO (K) FLUORANTHENE (mg/kg)	135TMB	<0.00500	1,3,5-TRIMETHYLBENZENE (mg/kg)
Chr	<0.00500	CHRYSENE (mg/kg)	N	<0.00500	NAPHTHALENE (mg/kg)
DBahAnt	<0.00500	DIBENZO (A,H) ANTHRACENE (mg/kg)	G	<0.50	TPH-GRO (mg/kg)
FLU	<0.00500	FLUORANTHENE (mg/kg)	D	<50	TPH-DRO (mg/kg)
FL	<0.00500	FLUORENE (mg/kg)	O	<50	TPH-ORO (mg/kg)
I123cdPY	<0.00500	INDENO (1,2,3-CD) PYRENE (mg/kg)			
PY	<0.00500	PYRENE (mg/kg)			
1MN	<0.00500	1-METHYLNAPHTHALENE (mg/kg)			
2MN	<0.00500	2-METHYLNAPHTHALENE (mg/kg)			

Figure 3
ORGANIC SOIL CHEMISTRY MAP

NOBLE ENERGY, INC. ~ QC A 32-19
NENW Sec. 32, T6N, R64W, 6th PM
Weld County, Colorado
40.446490°, -104.577610°

Project No. C022-058	API # 05-123-32723	Facility # 420814
Date 8/4/25	Remediation # 22326	Filename 22058Q2FL



LEGEND

- WELL HEAD LOCATION
- ABOVE GROUND STORAGE TANK
- FORMER FACILITY
- FORMER FLOW LINE
- FENCE LINE
- CONTAINMENT BERM
- CONTAINMENT WALL

SAMPLE	SAMPLE ID	DATE	DATE SAMPLED	DEPTH	DEPTH (ft)	SAMPLE	SAMPLE ID	DATE	DATE SAMPLED	DEPTH	DEPTH (ft)
As	<-0.01	ARSENIC (mg/kg)	pH	<-0.01	pH (pH units)						
BA	<-0.01	BARIUM (mg/kg)	EC	<-0.01	EC (mmhos/cm)						
CD	<-0.01	CADMIUM (mg/kg)	SAR	<-0.01	SAR (units)						
CR(VI)	<-0.01	CHROMIUM (mg/kg)	B	<-0.01	BORON (mg/L)						
CU	<-0.01	COPPER (mg/kg)									
PB	<-0.01	LEAD (mg/kg)									
NI	<-0.01	NICKEL (mg/kg)									
SE	<-0.01	SELENIUM (mg/kg)									
AG	<-0.01	SILVER (mg/kg)									
Z	<-0.01	ZINC (mg/kg)									

Figure 4

METALS AND INORGANIC SOIL CHEMISTRY MAP

NOBLE ENERGY, INC. ~ QC A 32-19
 NENW Sec. 32, T6N, R64W, 6th PM
 Weld County, Colorado
 40.446490°, -104.577610°

Project No. C022-058	API # 05-123-32723	Facility # 420814	
Date 8/4/25	Remediation # 22326	Filename 22058Q2FL	

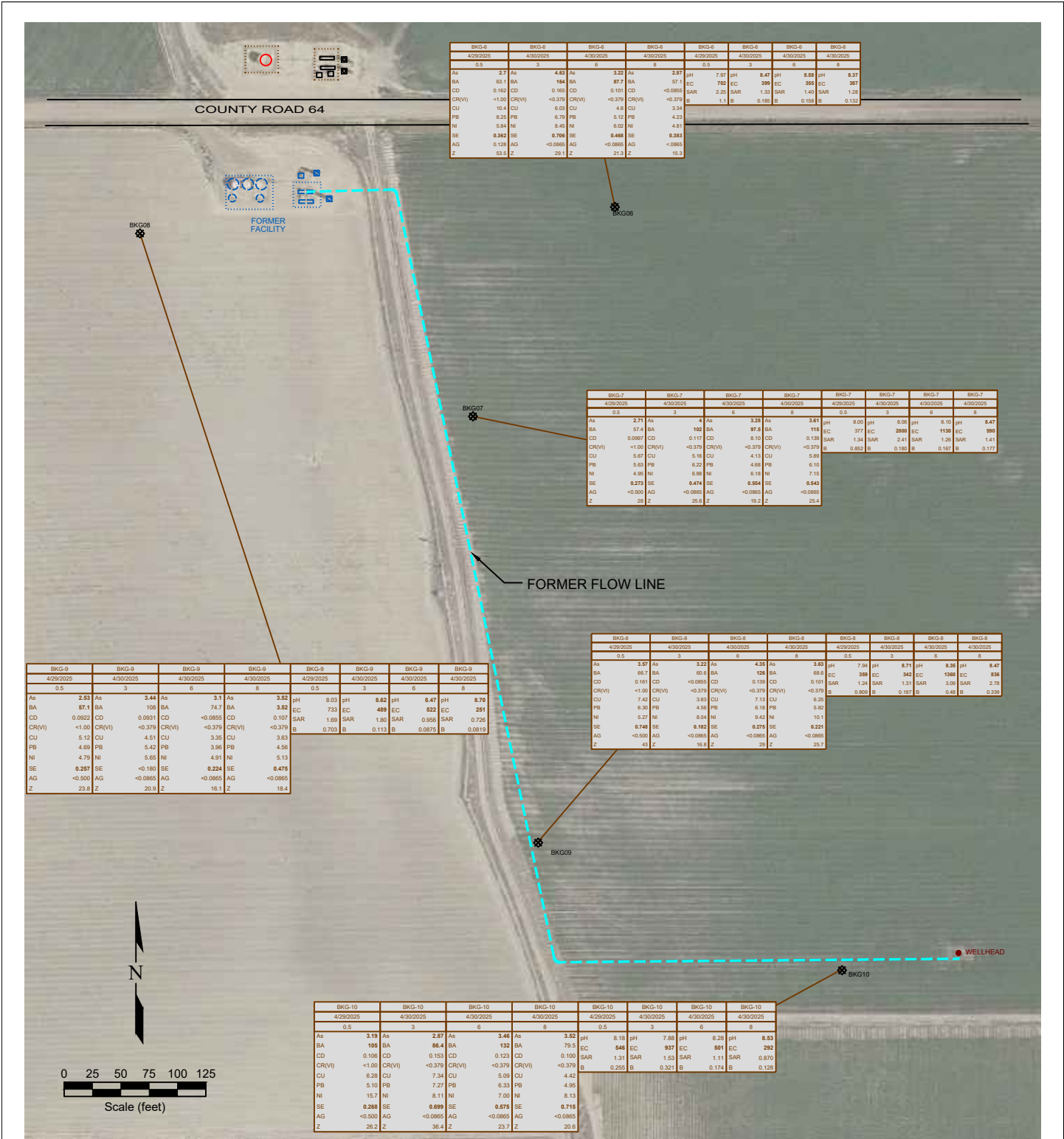


Figure 5
BACKGROUND SAMPLE SOIL CHEMISTRY MAP

NOBLE ENERGY, INC. ~ QC A 32-19
 NENW Sec. 32, T6N, R64W, 6th PM
 Weld County, Colorado
 40.446490°, -104.577610°

Project No. C022-058	API # 05-123-32723	Facility # 420814
Date 8/4/25	Remediation # 22326	Filename 22058Q2FL



LEGEND

- WELL HEAD LOCATION
- ABOVE GROUND STORAGE TANK
- FORMER FACILITY
- FORMER FLOW LINE
- FENCE LINE
- CONTAINMENT BERM
- CONTAINMENT WALL

SAMPLE	SAMPLE ID	DATE SAMPLED	DEPTH (ft)	DEPTH (ft)	PH	PH (units)	PH (units)
As	<0.51						
BA	<0.81						
CD	<0.61						
CR(VI)	<0.65						
CU	<0.81						
PB	<0.65						
NI	<0.65						
SE	<0.5						
AG	<0.65						
Z	<0.65						



TABLES

Table 1: Photoionization Detector Reading Summary

Table 2: Soil Analytical Results Summary

TABLE 1
PHOTOIONIZATION DETECTOR READING SUMMARY
QC USX #A32-19
CLOSURE ASSESSMENT
40.446490 / -104.577610
NE 1/4 NW 1/4 SEC.32 T6N R64W 6PM
WELD COUNTY, COLORADO
API # 05-123-32723
REMEDIAION # 22326

Sample Location (Latitude/Longitude)	Date	Approximate Depth (feet)	PID Reading (ppm-v)	Lab Submission (Y/N)
WH-SS-01 @ 5' (40.446492 / -104.577618)	03/31/22	5	1.8	N
WH-SS-02 @ 5' (40.446480 / -104.577600)	03/31/22	5	2.7	N
WH-SS-03 @ 5' (40.446471 / -104.577615)	03/31/22	5	3.0	N
WH-SS-04 @ 5' (40.446483 / -104.577632)	03/31/22	5	1.7	N
WH-FS-01 @ 6' (40.446486 / -104.577616)	03/31/22	6	3.5	Y
FL-SS-01 @ 3' (40.449464 / -104.580932)	03/31/22	3	2.8	Y
(Y/N) = Yes or No ppm-v = parts per million by volume PID = Photoionization Detector				

TABLE 2
SOIL ANALYTICAL RESULTS SUMMARY
QC USX #A32-19
CLOSURE ASSESSMENT
40.446490 / -104.577610
NE 1/4 NW 1/4 SEC.32 T6N R64W 6PM
WELD COUNTY, COLORADO
API # 05-123-32723
REMEDATION # 22326

Sample Location		WH-FS-01 @ 6'		FL-SS-01 @ 3'	
(Latitude / Longitude)		(40.446486 / -104.577616)		(40.449464 / -104.580932)	
Sample Date		3/31/2022		3/31/2022	
Sample Depth		6'		3'	
PID Reading (ppm-v)		3.5		2.8	
Regulatory Limits					
Chemical of Concern	Units	COGCC Table 915-1 RSSLs	COGCC Table 915-1 GSSLs		
VOCs					
Benzene	mg/kg	1.2	0.0026	<0.00200	<0.00200
Toluene	mg/kg	490	0.69	<0.00200	<0.00200
Ethylbenzene	mg/kg	5.8	0.78	<0.00200	<0.00200
Total Xylenes	mg/kg	58	9.9	<0.00200	<0.00200
1,2,4-Trimethylbenzene	mg/kg	30	0.0081	<0.00200	<0.00200
1,3,5-Trimethylbenzene	mg/kg	27	0.0087	<0.00200	<0.00200
Total Petroleum Hydrocarbons					
TPH-GRO	mg/kg	500	--	<0.200	<0.200
TPH-DRO	mg/kg	500	--	<25.0	<25.0
TPH-RRO	mg/kg	500	--	<100	<100
Polycyclic Aromatics Hydrocarbons					
1-Methyl-naphthalene	mg/kg	18	0.006	<0.00067	<0.00067
2-Methyl-naphthalene	mg/kg	24	0.019	<0.00067	<0.00067
Acenaphthene	mg/kg	360	0.55	<0.00067	<0.00067
Anthracene	mg/kg	1800	5.8	<0.00067	<0.00067
Benzo(a)-anthracene	mg/kg	1.1	0.011	<0.00067	<0.00067
Benzo(a)-pyrene	mg/kg	0.11	0.24	<0.00067	<0.00067
Benzo(b)-fluoranthene	mg/kg	1.1	0.3	<0.00067	<0.00067
Benzo(k)-fluoranthene	mg/kg	11	2.9	<0.00067	<0.00067
Chrysene	mg/kg	110	9	<0.00067	<0.00067
Dibenzo(a,h)-anthracene	mg/kg	0.11	0.096	<0.00067	<0.00067
Fluoranthene	mg/kg	240	8.9	<0.00067	<0.00067
Fluorene	mg/kg	240	0.54	<0.00067	<0.00067
Indeno(1,2,3-cd)-pyrene	mg/kg	1.1	0.98	<0.00067	<0.00067
Naphthalene	mg/kg	2	0.0038	<0.00067	<0.00067
Pyrene	mg/kg	180	1.3	<0.00067	<0.00067
Soil Suitability (Inorganics)					
Boron	mg/L	2	--	0.393	0.120
pH	standard unit	6-8.3	--	7.81	8.23
Sodium Adsorption Ratio (SAR)	--	<6	--	1.33	0.482
Specific Conductance (EC)	mmhos/cm	<4	--	0.934	0.229
COGCC = Colorado Oil and Gas Conservation Commission mg/kg = milligrams per kilogram mmhos/cm = millimhos per centimeter PID = Photoionization Detector ppm-v = parts per million by volume mg/L = milligrams per liter SAR = Sodium Adsorption Ratio Notes: Values presented with a less than symbol (<) did not contain concentrations at or above the laboratory reporting limit and/or minimum detection limit Values presented in BOLD exceed COGCC Table 915-1 Regulatory Limits.					
VOCs - Volatile Organic Compounds RSSLs = Residential Soil Screening Levels GSSLs = Protection of Groundwater Soil Screening Levels TPH-GRO = Total Petroleum Hydrocarbons - Gasoline Range Organics TPH-DRO = Total Petroleum Hydrocarbons - Diesel Range Organics TPH-RRO = Total Petroleum Hydrocarbons - Residual Range Organics					

TABLE 1
FIELD DATA SUMMARY TABLE
NOBLE 100322
QC A 32-19 (FLOWLINE), WELD COUNTY, COLORADO
REM # 22326

Sample ID	Sample Date	Depth (ft)	GPS Data Latitude/Longitude		PDOP Value	VOC Concentration (ppm)
SEP N Surface (2)	04/28/2025	0.5	40.44945541	-104.5809427	-	-
FL02 3ft	5/30/2025	3	40.44946151	-104.5804939	-	-
FL03 3ft	5/30/2025	3	40.44648146	-104.5796499	-	-
WH-FS-01 6ft	5/30/2025	6	40.44648131	-104.5776001	-	-
BKG	7/13/2022	1	-	-	-	-
BKG-6	4/29/2025	0.5	40.44943241	-104.5793847	-	-
BKG-6	4/30/2025	3,6,8	40.44943241	-104.5793847	-	-
BKG-7	4/29/2025	0.5	40.44868929	-104.580061	-	-
BKG-7	4/30/2025	3,6,8	40.44868929	-104.580061	-	-
BKG-8	4/29/2025	0.5	40.4493042	-104.5817968	-	-
BKG-8	4/30/2025	3,6,8	40.4493042	-104.5817968	-	-
BKG-9	4/29/2025	0.5	40.44711803	-104.5797748	-	-
BKG-9	4/30/2025	3,6,8	40.44711803	-104.5797748	-	-
BKG-10	4/29/2025	0.5	40.44668526	-104.5783045	-	-
BKG-10	4/30/2025	3,6,8	40.44668526	-104.5783045	-	-

1. Global Positioning System (GPS) data is provided in decimal degrees using North American Datum (NAD) 83 UTMZone 13 North.

2. Volatile organic compound (VOC) concentrations are measured in the field using a photoionization detector (PID).

PDOP = Position Dilution of Precision

ppm = Parts per million

in. = Inches

ft. = Feet

bgs = Below ground surface

TABLE 2
SUMMARY OF VOLATILE ORGANIC SOIL CHEMISTRY DATA
NOBLE 100322
QC A 32-19 (FLOWLINE), WELD COUNTY, COLORADO
REM # 22326

Sample ID	Sample Date	Depth (ft)	Benzene (mg/kg)	Toluene (mg/kg)	Ethyl-Benzene (mg/kg)	Xylenes (mg/kg)	1,2,4-Trimethyl-Benzene (mg/kg)	1,3,5-Trimethyl-Benzene (mg/kg)	Naphthalene (mg/kg)	TPH (mg/kg)	TPH GRO (mg/kg)	TPH DRO (mg/kg)	TPH ORO (mg/kg)
ECMC Table 915-1 Limits (Residential SSL)			1.2	490	5.8	58	30	27	2	500	500**		
ECMC Table 915-1 Limits (Protection of Groundwater SSL)			0.0026	0.69	0.78	9.9	0.0081	0.0087	0.0038	500	500**		
SEP N Surface (2)	04/28/2025	0.5	<0.0020	<0.0050	<0.0050	<0.010	<0.0050	<0.0050	<0.0038	<500	<0.50	<50	<50
FL02 3ft	4/30/2025	3	<0.000467	<0.00130	<0.000737	<0.000880	<0.00158	<0.00200	<0.00579	3.95	<0.0217	1.76	2.19
FL03 3ft	4/30/2025	3	<0.000467	<0.00130	<0.000737	<0.000880	<0.00158	<0.00200	<0.00579	<500	<0.0217	<1.61	<5.38
WH-FS-01 6ft	4/30/2025	6	<0.000467	<0.00130	<0.000737	<0.000880	<0.00158	<0.00200	<0.00579	<500	<0.0243	<1.61	2.72

1. Bold values exceed the ECMC Table 915-1 limit(s)
 2. Red & blue highlighted soil analytical values indicate an exceedance of the referenced soil screening level (SSL)
 3. * Indicates laboratory minimum detection limit in excess of SSL
 4. ** Summation of GRO+DRO+ORO must be less than 500 mg/kg
- (<) = Analytical result is less than the indicated laboratory reporting limit.
TPH-GRO = Total petroleum hydrocarbons - gasoline range organics
TPH-DRO = Total petroleum hydrocarbons - diesel range organics
TPH-ORO = Total petroleum hydrocarbons - oil range organics
mg/kg = Milligrams per kilogram
ft. = Feet
bgs = Below ground surface
NA = Not analyzed

TABLE 3
SUMMARY OF POLYCYCLIC AROMATIC HYDROCARBON SOIL CHEMISTRY DATA
NOBLE 100322
QC A 32-19 (FLOWLINE), WELD COUNTY, COLORADO
REM # 22326

Sample ID	Sample Date	Depth (ft)	Acenaphthene (mg/kg)	Anthracene (mg/kg)	Benzo (a) Anthracene (mg/kg)	Benzo (a) Pyrene (mg/kg)	Benzo (b) Fluoranthene (mg/kg)	Benzo (k) Fluoranthene (mg/kg)	Chrysene (mg/kg)	Dibenzo (a,h) Anthracene (mg/kg)	Fluoranthene (mg/kg)	Fluorene (mg/kg)	Indeno (1,2,3-cd) Pyrene (mg/kg)	Pyrene (mg/kg)	1-Methyl - Naphthalene (mg/kg)	2-Methyl- Naphthalene (mg/kg)
ECMC Table 915-1 Limits (Residential SSL)			360	1800	1.1	0.11	1.1	11	110	0.11	240	240	1.1	180	18	24
ECMC Table 915-1 Limits (Protection of Groundwater SSL)			0.55	5.8	0.011	0.24	0.3	2.9	9	0.096	8.9	0.54	0.98	1.3	0.006	0.019
SEP N Surface (2)	04/28/2025	0.5	<0.00600	<0.00600	<0.00600	<0.00600	<0.00600	<0.00600	<0.00600	<0.00600	<0.00600	<0.00600	<0.00600	<0.00600	<0.0200	<0.0200
FLO2 3ft	5/30/2025	3	<0.00162	<0.00162	<0.00200	<0.00163	<0.00275	<0.00213	<0.00206	<0.00201	<0.00239	<0.00180	<0.00234	<0.00205	0.00395	0.0108
FLO3 3ft	5/30/2025	3	<0.00162	<0.00163	<0.00200	<0.00163	<0.00275	<0.00213	<0.00239	<0.00201	<0.00239	<0.00180	<0.00234	<0.00205	<0.00219	<0.00579
WH-FS-01 6ft	5/30/2025	6	<0.00162	<0.00163	<0.00200	<0.00163	<0.00213	<0.00213	<0.00206	<0.00201	<0.00239	<0.00180	<0.00234	<0.00205	<0.00219	<0.00571

1. Bold values exceed the ECMC Table 915-1 limit(s)
 2. Red & blue highlighted soil analytical values indicate an exceedance of the referenced soil screening level (SSL)
 3. * Indicates laboratory minimum detection limit in excess of SSL
 4. ** Summation of GRO+DRO+ORO must be less than 500 mg/kg
- (<) = Analytical result is less than the indicated laboratory reporting limit.
TPH-GRO = Total petroleum hydrocarbons - gasoline range organics
TPH-DRO = Total petroleum hydrocarbons - diesel range organics
TPH-ORO = Total petroleum hydrocarbons - oil range organics
mg/kg = Milligrams per kilogram
ft. = Feet
bgs = Below ground surface
NA - Not analyzed

TABLE 4
SUMMARY OF SOIL SUITABILITY FOR RECLAMATION
NOBLE 100322
QC A 32-19 (FLOWLINE), WELD COUNTY, COLORADO
REM # 22326

Sample ID	Sample Date	Depth (ft)	pH (Standard Units)	EC (mmhos/cm)	SAR (Standard Units)	Boron (mg/L)
ECMC Table 915-1 Soil Suitability Limits			6 - 8.3	4	6	2
SEP N Surface (2)	04/28/2025	0.5	7.8	0.379	1.08	0.436
FL02 3ft	5/30/2025	3	8.41	0.969	2.42	0.250
FL03 3ft	5/30/2025	3	8.09	1.25	1.89	0.181
WH-FS-01 6ft	5/30/2025	6	8.33	0.464	0.0807	0.0991
BKG	7/13/2022	1	8.13	NA	NA	NA
BKG-1 6ft	06/16/2023	6	8.14	NA	NA	NA
BKG-2 6ft	06/16/2023	6	8.12	NA	NA	NA
BKG-3 6ft	06/16/2023	6	8.07	NA	NA	NA
BKG-4 6ft	06/16/2023	6	8.29	NA	NA	NA
BKG-5 6ft	06/16/2023	6	7.93	NA	NA	NA
BKG 7 ft	12/07/2022	7	8.21	0.435	0.578	0.0233
BKG-1 8ft	06/16/2023	8	8.09	NA	NA	NA
BKG-2 8ft	06/16/2023	8	8.08	NA	NA	NA
BKG-3 8ft	06/16/2023	8	8.12	NA	NA	NA
BKG-4 8ft	06/16/2023	8	8.28	NA	NA	NA
BKG-5 8ft	06/16/2023	8	8.08	NA	NA	NA
BKG-6	4/29/2025	0.5	7.97	0.702	2.25	1.10
BKG-6	4/30/2025	3	8.47	0.399	1.33	0.185
BKG-6	4/30/2025	6	8.58	0.355	1.40	0.158
BKG-6	4/30/2025	8	8.37	0.387	1.28	0.132
BKG-7	4/29/2025	0.5	8.00	0.377	1.34	0.852
BKG-7	4/30/2025	3	8.06	2	2.41	0.180

TABLE 4
SUMMARY OF SOIL SUITABILITY FOR RECLAMATION
NOBLE 100322
QC A 32-19 (FLOWLINE), WELD COUNTY, COLORADO
REM # 22326

Sample ID	Sample Date	Depth (ft)	pH (Standard Units)	EC (mmhos/cm)	SAR (Standard Units)	Boron (mg/L)
ECMC Table 915-1 Soil Suitability Limits			6 - 8.3	4	6	2
BKG-7	4/30/2025	6	8.10	1.13	1.26	0.167
BKG-7	4/30/2025	8	8.47	0.59	1.41	0.177
BKG-8	4/29/2025	0.5	7.94	0.359	1.24	0.809
BKG-8	4/30/2025	3	8.71	0.342	1.31	0.187
BKG-8	4/30/2025	6	8.35	1.36	3.09	0.48
BKG-8	4/30/2025	8	8.47	0.836	2.78	0.339
BKG-9	4/29/2025	0.5	8.03	0.733	1.69	0.703
BKG-9	4/30/2025	3	8.62	0.489	1.80	0.113
BKG-9	4/30/2025	6	8.47	0.522	0.956	0.0875
BKG-9	4/30/2025	8	8.70	0.251	0.726	0.0819
BKG-10	4/29/2025	0.5	8.18	0.546	1.31	0.255
BKG-10	4/30/2025	3	7.88	0.937	1.53	0.321
BKG-10	4/30/2025	6	8.28	0.501	1.11	0.174
BKG-10	4/30/2025	8	8.53	0.292	0.870	0.128
Maximum Background Concentration		7	8.71	2	3.09	1.1

1. **Bold** faced values exceed the ECMC Table 915-1 limit(s), but are within background concentrations.

2. **Bold** faced values exceed the ECMC Table 915-1 limit(s) and native background concentrations.

3. Brown highlighted soil analytical values indicate a regulatory exceedance.

NA - Not analyzed/Not applicable

TABLE 5
SUMMARY OF METALS IN SOIL CHEMISTRY DATA
NOBLE 100322
QC A 32-19 (FLOWLINE), WELD COUNTY, COLORADO
REM # 22326

Sample ID	Sample Date	Depth (ft)	Arsenic (mg/kg)	Barium (mg/kg)	Cadmium (mg/kg)	Chromium (VI) (mg/kg)	Copper (mg/kg)	Lead (mg/kg)	Nickel (mg/kg)	Selenium (mg/kg)	Silver (mg/kg)	Zinc (mg/kg)
ECMC Table 915-1 Limits (Residential SSL)			0.68	15000	71	0.3	3100	400	1500	390	390	23000
ECMC Table 915-1 Limits (Protection of Groundwater SSL)			0.29	82	0.38	0.00067	46	14	26	0.26	0.8	370
S WALL 6FT (2)	4/29/2025	6	3.04	76.4	<1.00	<1.00	5.17	4.26	7.3	0.235	<0.500	21.2
FL02 3ft	5/30/2025	3	3.10	104	0.113	<0.379	4.71	5.22	5.84	0.194	<0.0865	21.6
FL03 3ft	5/30/2025	3	2.86	65.7	0.0985	<0.0379	3.63	4.56	5.13	0.475	<0.0865	18.4
WH-FS-01 6ft	5/30/2025	6	2.97	71.4	0.0896	<0.3379	4.08	4.48	5.77	0.527	<0.00865	18.9
BKG-1 6ft	06/16/2023	6	0.936	NA	NA	NA	NA	NA	NA	NA	NA	NA
BKG-2 6ft	06/16/2023	6	1.14	NA	NA	NA	NA	NA	NA	NA	NA	NA
BKG-3 6ft	06/16/2023	6	1.12	NA	NA	NA	NA	NA	NA	NA	NA	NA
BKG-4 6ft	06/16/2023	6	0.891	NA	NA	NA	NA	NA	NA	NA	NA	NA
BKG-5 6ft	06/16/2023	6	0.963	NA	NA	NA	NA	NA	NA	NA	NA	NA
BKG 7 ft	12/07/2022	7	1.88	52.4	0.0952	<0.30	3.94	2.97	3.06	<0.282	0.0122	12.2
BKG-1 8ft	06/16/2023	8	1.03	NA	NA	NA	NA	NA	NA	NA	NA	NA
BKG-2 8ft	06/16/2023	8	0.948	NA	NA	NA	NA	NA	NA	NA	NA	NA
BKG-3 8ft	06/16/2023	8	0.968	NA	NA	NA	NA	NA	NA	NA	NA	NA
BKG-4 8ft	06/16/2023	8	0.860	NA	NA	NA	NA	NA	NA	NA	NA	NA
BKG-5 8ft	06/16/2023	8	0.872	NA	NA	NA	NA	NA	NA	NA	NA	NA
BKG-6	4/29/2025	0.5	2.7	63.1	0.162	<1.00	10.4	8.25	5.84	0.362	0.128	53.5
BKG-6	4/30/2025	3	4.63	164	0.165	<0.379	6.03	6.79	8.45	0.706	<0.0865	29.1
BKG-6	4/30/2025	6	3.22	87.7	0.101	<0.379	4.80	5.12	6.02	0.468	<0.0865	21.3
BKG-6	4/30/2025	8	2.87	57.1	<0.0855	<0.379	3.34	4.23	4.81	0.383	<.0865	15.3
BKG-7	4/29/2025	0.5	2.71	57.4	0.0997	<1.00	5.67	5.63	4.95	0.273	<0.500	28
BKG-7	4/30/2025	3	4.00	102	0.117	<0.379	5.16	6.22	6.88	0.474	<0.0865	25.8
BKG-7	4/30/2025	6	3.28	97.5	8.10	<0.379	4.13	4.68	6.18	0.554	<0.0865	19.2
BKG-7	4/30/2025	8	3.61	115	0.139	<0.379	5.89	6.1	7.15	0.543	<0.0865	25.4
BKG-8	4/29/2025	0.5	3.57	66.7	0.161	<1.00	7.42	6.3	5.27	0.748	<0.500	43
BKG-8	4/30/2025	3	3.22	60.6	<0.0855	<0.379	3.83	4.56	8.04	0.182	<0.0865	16.8
BKG-8	4/30/2025	6	4.35	126	0.139	<0.379	7.13	6.18	9.42	0.275	<0.0865	29
BKG-8	4/30/2025	8	3.63	68.6	0.101	<0.379	6.25	5.82	10.1	0.221	<0.0865	25.7
BKG-9	4/29/2025	0.5	2.53	57.1	0.0922	<1.00	5.12	4.69	4.79	0.257	<0.500	23.8
BKG-9	4/30/2025	3	3.44	108	0.0931	<0.379	4.51	5.42	5.65	<0.180	<0.0865	20.9

TABLE 5
SUMMARY OF METALS IN SOIL CHEMISTRY DATA
NOBLE 100322
QC A 32-19 (FLOWLINE), WELD COUNTY, COLORADO
REM # 22326

Sample ID	Sample Date	Depth (ft)	Arsenic (mg/kg)	Barium (mg/kg)	Cadmium (mg/kg)	Chromium (VI) (mg/kg)	Copper (mg/kg)	Lead (mg/kg)	Nickel (mg/kg)	Selenium (mg/kg)	Silver (mg/kg)	Zinc (mg/kg)
ECMC Table 915-1 Limits (Residential SSL)			0.68	15000	71	0.3	3100	400	1500	390	390	23000
ECMC Table 915-1 Limits (Protection of Groundwater SSL)			0.29	82	0.38	0.00067	46	14	26	0.26	0.8	370
BKG-9	4/30/2025	6	3.10	74.7	<0.0855	<0.379	3.35	3.96	4.91	0.224	<0.0865	16.1
BKG-9	4/30/2025	8	3.52	3.52	0.107	<0.379	3.63	4.56	5.13	0.475	<0.0865	18.4
BKG-10	4/29/2025	0.5	3.19	105	0.106	<1.00	6.28	5.1	15.7	0.268	<0.500	26.2
BKG-10	4/30/2025	3	2.87	86.4	0.153	<0.379	7.34	7.27	8.11	0.699	<0.0865	36.4
BKG-10	4/30/2025	6	3.46	132	0.123	<0.379	5.09	6.33	7.00	0.575	<0.0865	23.7
BKG-10	4/30/2025	8	3.52	79.5	0.100	<0.379	4.42	4.95	8.13	0.715	<0.0865	20.6
1.25x Maximum Background Concentration			4.63	164	8.1	0	10.4	8.25	15.7	0.748	0.128	53.5

- 1. Bold** faced values exceed the ECMC Table 915-1 limit(s), but are within 1.25x background concentrations.
- 2. Bold** faced values exceed the ECMC Table 915-1 limit(s) and native background concentrations.
- Red & blue highlighted soil analytical values indicate an exceedance of the referenced soil screening level (SSL).
- Non-detect background results accounted for in the highest background concentration by using the reporting limit.

ECMC = Energy & Carbon Management Commission

(<) = Analytical result is less than the indicated laboratory reporting limit.

mg/kg = Milligrams per kilogram

ft. = Feet

bgs = Below ground surface

* Indicates laboratory minimum detection limit in excess of SSL

NA - Not analyzed/Not applicable



ATTACHMENT A

Photo Log

QC USX #A32-19
API # 05-123-32723
Remediation # 22326

Closure Assessment

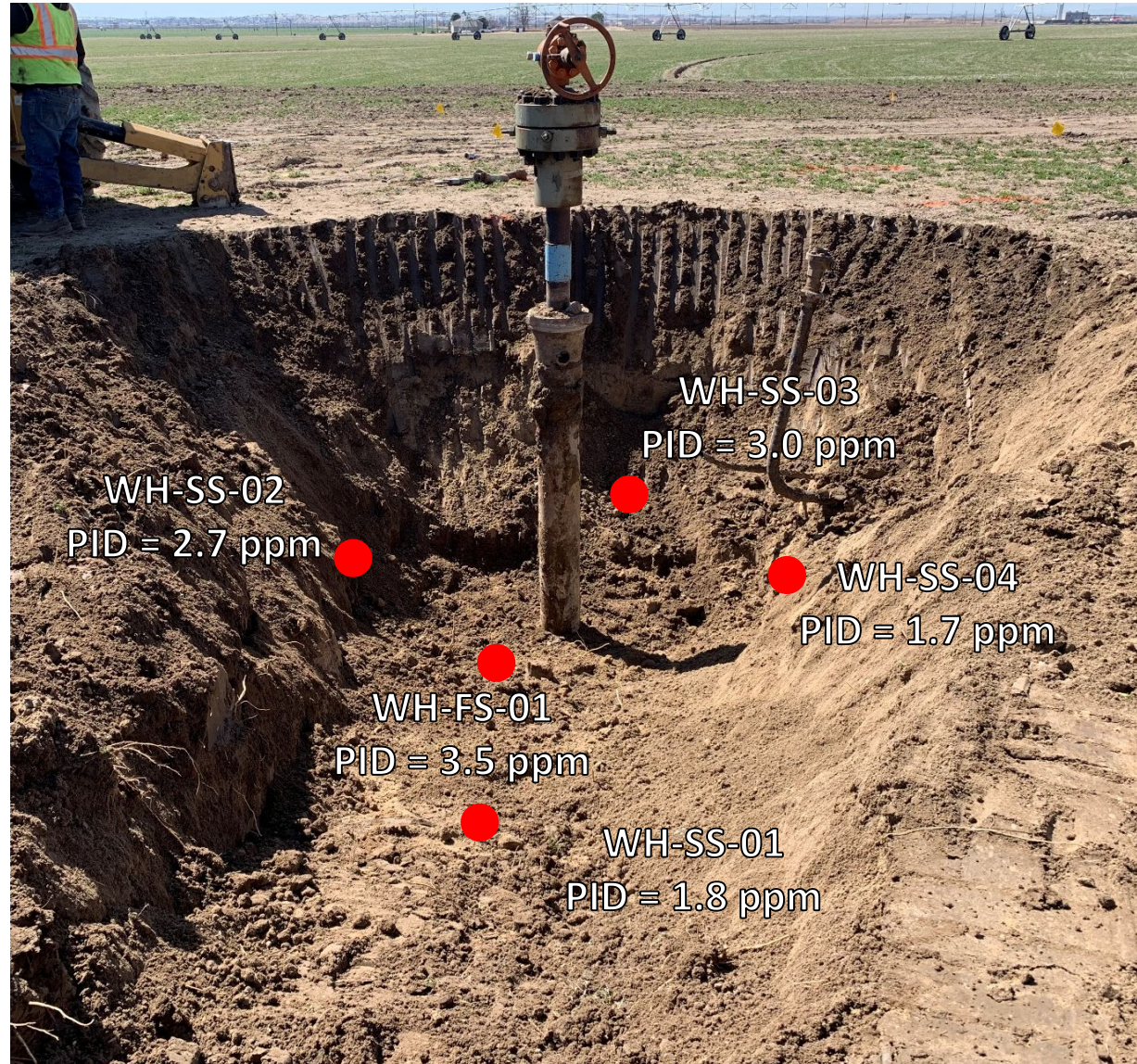
March 2022



EAGLE
ENVIRONMENTAL
CONSULTING, INC.
8000 W 44th Ave, Wheat Ridge, CO 80033
Ph: 303-433-0479 • F: 303-325-5449



Wellhead Excavation – 03/31/22



Looking south-southeast
No petroleum hydrocarbon staining or odor observed

Flowline Assessment – 03/31/22



Flowline abandoned in place. Pt. B (at separator) assessed
No petroleum hydrocarbon staining observed or odor observed