

Well Name & API: **SUDEN 34U-403, 05-123-39754**

Flowline Abandonment Type:

Abandon in Place due to active facility and common trench with active flowlines. With abandonment of fuel supply line (204803).



Flowlines

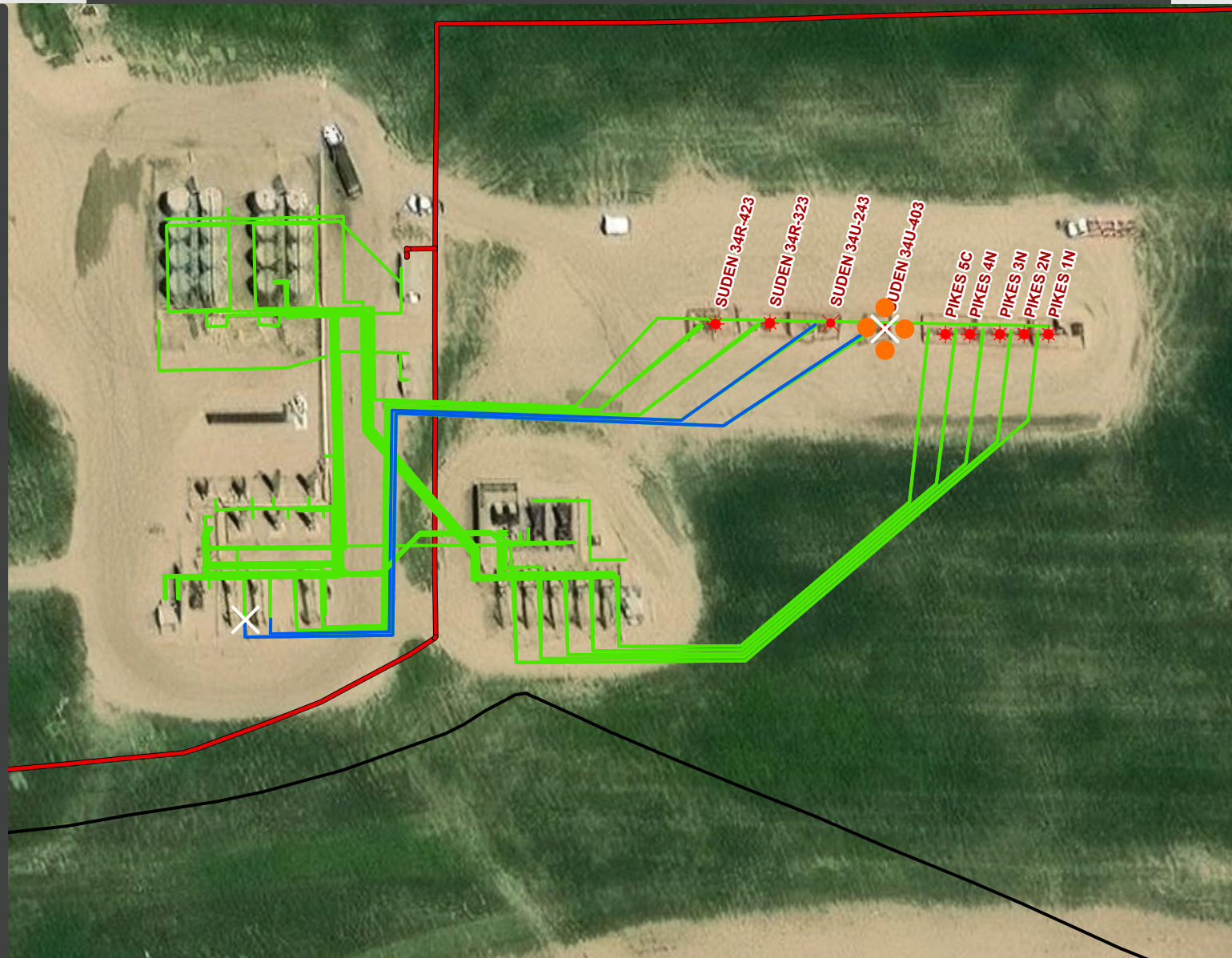
- Abandoned
- Active
- Out of Service
- Pre-Commissioned
- Removed
- Turned into Air Line
- Area of Conflict
(Proposed Abandon-in-Place Area)
- ✕ Proposed Soil Sample Location
- Field Screening Location

Wells

- Active Well
- ◆ Abandoned Location
- ✖ Plugged & Abandoned
- ★ Producing
- ✕ Shut-In
- ⊕ Temporarily Abandoned
- ▣ Waiting on Completion

Third-Party Pipelines

- — — —
- — — —
- NWI Wetlands



Well Latitude/Longitude: 40.3625090/-104.5302110

Flowline Length (ft): 485

Flowline Point A Latitude/Longitude: 40.3625090/-104.5302369

Flowline Point B Latitude/Longitude: 40.3620835/-104.5314658

Created by: CJENCK

Date: 7/17/2025

