

**DECOMMISSIONING REPORT**  
**SEGAL 8-2-24 FLOWLINE**

**ECMC REMEDIATION # 39581**

Prepared for:



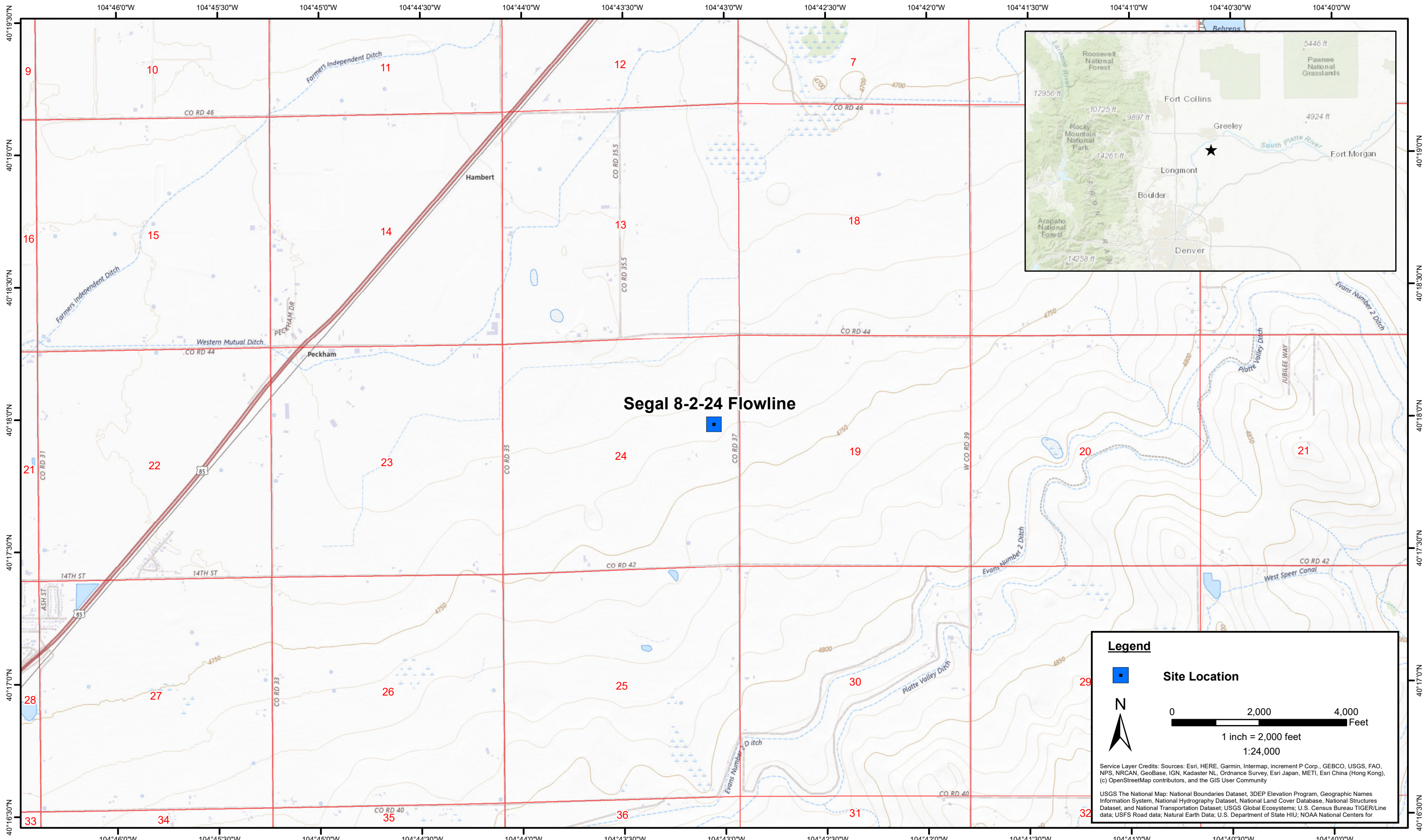
**PDC ENERGY**

1099 18th Street  
Suite 1500  
Denver, CO 80202


Prepared by:




4725 Independence Street  
Wheat Ridge, CO 80033



**Legend**

 **Site Location**

 N

0 2,000 4,000 Feet

1 inch = 2,000 feet  
1:24,000

Service Layer Credits: Sources: Esri, HERE, Garmin, Intermap, increment P Corp., GEBCO, USGS, FAO, NPS, NRCAN, GeoBase, IGN, Kadaster NL, Ordnance Survey, Esri Japan, METI, Esri China (Hong Kong), (c) OpenStreetMap contributors, and the GIS User Community

USGS The National Map: National Boundaries Dataset, 3DEP Elevation Program, Geographic Names Information System, National Hydrography Dataset, National Land Cover Database, National Structures Dataset, and National Transportation Dataset; USGS Global Ecosystems; U.S. Census Bureau TIGER/Line data; USFS Road data; Natural Earth Data; U.S. Department of State HIU; NOAA National Centers for

|              |           |
|--------------|-----------|
| DATE:        | May 2025  |
| DESIGNED BY: | B. Nelson |
| DRAWN BY:    | L. Reed   |



Tasman, Inc.  
4725 Independence St.  
Wheat Ridge, CO 80033

**PDC Energy, Inc. – 69175 – DJ Basin**  
**Segal 8-2-24 Flowline**  
 SENE, Section 24, Township 4 North, Range 66 West  
 Weld County, Colorado

Site Location Map

Figure  
1



DATE: August 11, 2025

DESIGNED BY: J. Whritenour

DRAWN BY: J. Llewellyn



**Tasman, Inc.**  
4725 Independence Street  
Wheat Ridge, CO 80033

**PDC Energy, Inc. – 69175 – DJ Basin**  
**Segal 8-2-24 Flowline**  
SENE, Section 24, Township 4 North, Range 66 West  
Weld County, Colorado

**SOIL SAMPLE  
LOCATION MAP**  
(05/14/2025 – 05/15/2025)

**FIGURE  
2**

**TABLE 1**  
**FIELD DATA SUMMARY TABLE**  
**PDC ENERGY, INC. - 69175**  
**SEGAL 8-2-24 FLOWLINE, WELD COUNTY, COLORADO**  
**REM # 39581**



| Sample ID              | Sample Date | Depth<br>(ft. bgs) | GPS Data <sup>1</sup> |             | PDOP Value | VOC Concentration <sup>2</sup><br>(ppm) |
|------------------------|-------------|--------------------|-----------------------|-------------|------------|---|
|                        |             |                    | Latitude/Longitude    |             |            |   |
| FL01R-W@3'             | 05/14/2025  | 3                  | 40.302294             | -104.720092 | 0.8        | 2.6                                     |
| FL01R-S@4'             | 05/14/2025  | 4                  | 40.301986             | -104.717479 | 0.8        | 0.0                                     |
| BKG01@2 <sup>(3)</sup> | 05/15/2025  | 2                  | 40.302062             | -104.716775 | 0.8        | 3.6                                     |
| BKG01@3 <sup>(3)</sup> | 05/15/2025  | 3                  | 40.302062             | -104.716775 | 0.8        | 2.6                                     |
| BKG01@4 <sup>(3)</sup> | 05/15/2025  | 4                  | 40.302062             | -104.716775 | 0.8        | 1.1                                     |
| BKG02@2 <sup>(3)</sup> | 05/15/2025  | 2                  | 40.302121             | -104.716784 | 0.8        | 2.7                                     |
| BKG02@3 <sup>(3)</sup> | 05/15/2025  | 3                  | 40.302121             | -104.716784 | 0.8        | 3.0                                     |
| BKG02@4 <sup>(3)</sup> | 05/15/2025  | 4                  | 40.302121             | -104.716784 | 0.8        | 1.4                                     |

**Notes:**

1. Global Positioning System (GPS) data is provided in decimal degrees using North American Datum (NAD) 83 UTM Zone 13 North.
2. Volatile organic compound (VOC) concentrations are measured in the field using a photoionization detector (PID).
3. Background samples collected under nearby Segal 41-24 flowline project (REM# 39725)

PDOP = Position Dilution of Precision

ppm = Parts per million

ft. = Feet

bgs = Below ground surface

NC = Not collected

NA = Not analyzed

Source material characterization sample, excavated and transported off site for disposal.

Material excavated and transported off site for disposal.

**TABLE 2**  
**SUMMARY OF VOLATILE ORGANIC SOIL CHEMISTRY DATA**  
**PDC ENERGY, INC. - 69175**  
**SEGAL 8-2-24 FLOWLINE, WELD COUNTY, COLORADO**  
**REM # 39581**



| Sample ID   | Sample Date | Depth (ft. bgs) | Benzene (mg/kg) | Toluene (mg/kg) | Ethyl-Benzene (mg/kg) | Xylenes (mg/kg) | 1,2,4-Trimethyl-Benzene (mg/kg) | 1,3,5-Trimethyl-Benzene (mg/kg) | Naphthalene (mg/kg) | TPH (mg/kg) | TPH GRO (mg/kg) | TPH DRO (mg/kg) | TPH ORO (mg/kg) |
|---|-------------|-----------------|-----------------|-----------------|-----------------------|-----------------|---------------------------------|---------------------------------|---------------------|-------------|-----------------|-----------------|-----------------|
| ECMC Table 915-1 Limits (Residential SSL)               |             |                 | 1.2             | 490             | 5.8                   | 58              | 30                              | 27                              | 2                   | 500         | 500**           |                 |                 |
| ECMC Table 915-1 Limits (Protection of Groundwater SSL) |             |                 | 0.0026          | 0.69            | 0.78                  | 9.9             | 0.0081                          | 0.0087                          | 0.0038              | 500         | 500**           |                 |                 |
| FL01R-W@2'  | 05/14/2025  | 2               | <0.0020         | <0.0050         | <0.0050               | <0.010          | <0.0050                         | <b>0.014</b>                    | <0.0038             | <50         | <0.50           | <50             | <50             |
| FL01R-S@3'  | 05/14/2025  | 3               | <0.0020         | <0.0050         | <0.0050               | <0.010          | <0.0050                         | <0.0050                         | <0.0038             | <50         | <0.50           | <50             | <50             |

**Notes:**

- 1. Bold** values exceed the ECMC Table 915-1 limit(s).
- Red & blue highlighted soil analytical values indicate an exceedance of the referenced soil screening level (SSL).
- \*\* Summation of GRO+DRO+ORO must be less than 500 mg/kg.

ECMC = Energy and Carbon Management Commission

(<) = Analytical result is less than the indicated laboratory reporting limit.

TPH-GRO = Total petroleum hydrocarbons - gasoline range organics

TPH-DRO = Total petroleum hydrocarbons - diesel range organics

TPH-ORO = Total petroleum hydrocarbons - oil range organics

mg/kg = Milligrams per kilogram

ft. = Feet

bgs = Below ground surface

NA = Not analyzed

Source material characterization sample, excavated and transported off site for disposal.

Material excavated and transported off site for disposal.

TABLE 3  
SUMMARY OF POLYCYCLIC AROMATIC HYDROCARBON SOIL CHEMISTRY DATA  
PDC ENERGY, INC. - 69175  
SEGAL 8-2-24 FLOWLINE, WELD COUNTY, COLORADO  
REM # 39581



| Sample ID   | Sample Date | Depth (ft. bgs) | Acenaphthene (mg/kg) | Anthracene (mg/kg) | Benzo (a) Anthracene (mg/kg) | Benzo (a) Pyrene (mg/kg) | Benzo (b) Fluoranthene (mg/kg) | Benzo (k) Fluoranthene (mg/kg) | Chrysene (mg/kg) | Dibenzo (a,h) Anthracene (mg/kg) | Fluoranthene (mg/kg) | Fluorene (mg/kg) | Indeno (1,2,3-cd) Pyrene (mg/kg) | Pyrene (mg/kg) | 1-Methyl - Naphthalene (mg/kg) | 2-Methyl - Naphthalene (mg/kg) |
|---|-------------|-----------------|----------------------|--------------------|------------------------------|--------------------------|--------------------------------|--------------------------------|------------------|----------------------------------|----------------------|------------------|----------------------------------|----------------|--------------------------------|--------------------------------|
| ECMC Table 915-1 Limits (Residential SSL)               |             |                 | 360                  | 1800               | 1.1                          | 0.11                     | 1.1                            | 11                             | 110              | 0.11                             | 240                  | 240              | 1.1                              | 180            | 18                             | 24                             |
| ECMC Table 915-1 Limits (Protection of Groundwater SSL) |             |                 | 0.55                 | 5.8                | 0.011                        | 0.24                     | 0.3                            | 2.9                            | 9                | 0.096                            | 8.9                  | 0.54             | 0.98                             | 1.3            | 0.006                          | 0.019                          |
| FL01R-W@2'  | 05/14/2025  | 2               | <0.00500             | <0.00500           | <0.00500                     | <0.00500                 | <0.00500                       | <0.00500                       | <0.00500         | <0.00500                         | <0.00500             | <0.00500         | <0.00500                         | <0.00500       | <0.00500                       | <0.00500                       |
| FL01R-S@3'  | 05/14/2025  | 3               | <0.00500             | <0.00500           | <0.00500                     | <0.00500                 | <0.00500                       | <0.00500                       | <0.00500         | <0.00500                         | <0.00500             | <0.00500         | <0.00500                         | <0.00500       | <0.00500                       | <0.00500                       |

**Notes:**

1. **Bold** values exceed the ECMC Table 915-1 limit(s).
2. Red & blue highlighted soil analytical values indicate an exceedance of the referenced soil screening level (SSL).
3. \* Indicates laboratory minimum detection limit in excess of SSL.

ECMC = Energy and Carbon Management Commission

(<) = Analytical result is less than the indicated laboratory reporting limit.

mg/kg = Milligrams per kilogram

ft. = Feet

bgs = Below ground surface

NA = Not analyzed

Source material characterization sample, excavated and transported off site for disposal.

Material excavated and transported off site for disposal.

**TABLE 4**  
**SUMMARY OF SOIL SUITABILITY FOR RECLAMATION**  
**PDC ENERGY, INC. - 69175**  
**SEGAL 8-2-24 FLOWLINE, WELD COUNTY, COLORADO**  
**REM # 39581**



| Sample ID                                | Sample Date | Depth (ft. bgs) | pH (Standard Units) | EC (mmhos/cm) | SAR (Standard Units) | Boron (mg/L) |
|--|-------------|-----------------|---------------------|---------------|----------------------|--------------|
| ECMC Table 915-1 Soil Suitability Limits |             |                 | 6 - 8.3             | <4            | <6                   | 2            |
| FL01R-W@2'                               | 05/14/2025  | 2               | 7.94                | 0.943         | 2.62                 | <2.00        |
| FL01R-S@3'                               | 05/14/2025  | 3               | 8.15                | 0.341         | 0.666                | <2.00        |
| BKG01@2' <sup>(4)</sup>                  | 05/15/2025  | 2               | 7.55                | 0.639         | 4.70                 | <0.50        |
| BKG01@3' <sup>(4)</sup>                  | 05/15/2025  | 3               | 8.12                | 0.556         | 5.93                 | <0.50        |
| BKG01@4' <sup>(4)</sup>                  | 05/15/2025  | 4               | 8.02                | 0.679         | 5.55                 | <0.50        |
| BKG02@2' <sup>(4)</sup>                  | 05/15/2025  | 2               | 7.33                | 0.508         | 1.97                 | <0.50        |
| BKG02@3' <sup>(4)</sup>                  | 05/15/2025  | 3               | 7.39                | 0.478         | 3.01                 | <0.50        |
| BKG02@4' <sup>(4)</sup>                  | 05/15/2025  | 4               | 8.10                | 0.449         | 2.55                 | <0.50        |
| Maximum Background Concentration         |             |                 | -                   | -             | -                    | -            |

**Notes:**

1. **Bold** faced values exceed the ECMC Table 915-1 limit(s), but are within background concentrations.
2. **Bold** faced values exceed the ECMC Table 915-1 limit(s) and native background concentrations.
3. Brown highlighted soil analytical values indicate a regulatory exceedance.
4. Background samples collected under nearby Segal 41-24 flowline project (REM # 39725).

ECMC = Energy and Carbon Management Commission

(<) = Analytical result is less than the indicated laboratory reporting limit.

mg/L = Milligrams per liter

ft. = Feet

bgs = Below ground surface

NA = Not analyzed

EC = Electrical conductivity

SAR = Sodium adsorption ratio

mmhos/cm = Millimohs per centimeter

Source material characterization sample, excavated and transported off site for disposal.

Material excavated and transported off site for disposal.

**TABLE 5**  
**SUMMARY OF METALS IN SOIL CHEMISTRY DATA**  
**PDC ENERGY, INC. - 69175**  
**SEGAL 8-2-24 FLOWLINE, WELD COUNTY, COLORADO**  
**REM # 39581**



| Sample ID   | Sample Date | Depth (ft. bgs) | Arsenic (mg/kg) | Barium (mg/kg) | Cadmium (mg/kg) | Chromium (VI) <sup>6</sup> (mg/kg) | Copper (mg/kg) | Lead (mg/kg) | Nickel (mg/kg) | Selenium (mg/kg) | Silver (mg/kg) | Zinc (mg/kg) |
|---|-------------|-----------------|-----------------|----------------|-----------------|------------------------------------|----------------|--------------|----------------|------------------|----------------|--------------|
| ECMC Table 915-1 Limits (Residential SSL)               |             |                 | 0.68            | 15000          | 71              | 0.3                                | 3100           | 400          | 1500           | 390              | 390            | 23000        |
| ECMC Table 915-1 Limits (Protection of Groundwater SSL) |             |                 | 0.29            | 82             | 0.38            | 0.00067                            | 46             | 14           | 26             | 0.26             | 0.8            | 370          |
| FL01R-W@2'  | 05/14/2025  | 2               | <b>1.77</b>     | <b>107</b>     | 0.252           | <0.30                              | 10.7           | <b>14.0</b>  | 7.02           | <0.260           | 0.102          | 34.0         |
| FL01R-S@3'  | 05/14/2025  | 3               | <b>1.12</b>     | <b>98.9</b>    | <0.200          | <0.30                              | 4.94           | 9.03         | 4.43           | <0.260           | 0.0223         | 17.9         |
| BKG01@2' <sup>(7)</sup>                                 | 05/15/2025  | 2               | 2.6             | 87.9           | <0.27           | <0.45                              | 5.7            | 5.6          | 6.5            | 2.8              | <0.55          | 22.2         |
| BKG01@3' <sup>(7)</sup>                                 | 05/15/2025  | 3               | 2.4             | 45.4           | <0.28           | 0.46                               | 4.9            | 5.6          | 5.0            | 2.5              | <0.56          | 18.2         |
| BKG01@4' <sup>(7)</sup>                                 | 05/15/2025  | 4               | 2.6             | 75.7           | <0.27           | <0.43                              | 5.2            | 5.7          | 5.7            | 2.6              | <0.55          | 20.7         |
| BKG02@2' <sup>(7)</sup>                                 | 05/15/2025  | 2               | 4.2             | 123            | <0.29           | <0.47                              | 5.8            | 6.0          | 7.1            | 3.1              | <0.58          | 23.4         |
| BKG02@3' <sup>(7)</sup>                                 | 05/15/2025  | 3               | 1.9             | 55.4           | <0.27           | <0.44                              | 3.9            | 3.6          | 3.9            | 1.8              | <0.54          | 14.0         |
| BKG02@4' <sup>(7)</sup>                                 | 05/15/2025  | 4               | 2.3             | 156            | <0.28           | <0.45                              | 5.0            | 9.4          | 6.0            | 2.8              | <0.57          | 20.6         |
| 1.25x Maximum Background Concentration                  |             |                 | 5.3             | 195            | -               | -                                  | -              | 12           | -              | -                | -              | -            |

**Notes:**

1. **Bold** faced values exceed the ECMC Table 915-1 limit(s), but are within 1.25x background concentrations.
2. **Bold** faced values exceed the ECMC Table 915-1 limit(s) and native background concentrations.
3. Red & blue highlighted soil analytical values indicate an exceedance of the referenced soil screening level (SSL).
4. Reporting limit used for 1.25 multiplier when all background results for a specific metal are non-detect.
5. \* Indicates laboratory minimum detection limit in excess of SSL.
6. Compound falls within the ECMC Table 915-1 footnote 9.
7. Background samples collected under nearby Segal 41-24 flowline project (REM # 39725).

ECMC = Energy & Carbon Management Commission

(<) = Analytical result is less than the indicated laboratory reporting limit.

mg/kg = Milligrams per kilogram

ft. = Feet

bgs = Below ground surface

NA = Not analyzed

Source material characterization sample, excavated and transported off site for disposal.

Material excavated and transported off site for disposal.



| <b>CLIENT:</b> PDC Energy, Inc. or PDC Permian                                    |                       |                 |             |           |        |                     | <b>SITE NAME:</b> Segal 8-2-24                    |  | <b>DATE:</b> 5/14/2025 |   | <b>REM. PROJECT #:</b> 39581 |  | <b>WEATHER:</b> 70s, sunny |  |
|---|-----------------------|-----------------|-------------|-----------|--------|---------------------|---|--|------------------------|---|------------------------------|--|----------------------------|--|
| <b>SITE DIRECTIONS:</b> CR44/CR37, turn S on 37 0.2 mi, S 0.1 mi, then W 0.1 into |                       |                 |             |           |        |                     | <b>JOB#:</b> 10477                                |  |                        |   |                              |  |                            |  |
| <b>LEGALS AND LAT/LONG:</b> 40.299675, -104.717579                                |                       |                 |             |           |        |                     | <b>TASMAN PERSONNEL:</b> M.Dilger                 |  |                        |   |                              |  |                            |  |
| <b>SOIL TYPES:</b> Well Graded Sand - SW  |                       |                 |             |           |        |                     | <b>SURFACE GRADIENT:</b> West                     |  |                        |   |                              |  |                            |  |
| <b>SOIL SAMPLING</b>  |                       |                 |             |           |        |                     | <b>FACILITY INFRASTRUCTURE</b>                    |  |                        |   |                              |  |                            |  |
| Date/Time   | Soil Sample ID        | PID (ppm)       | Visual      | Olfactory | Photo? | Grab or Lab Sample? | EQUIPMENT   |  | Quantity               |   |                              |  |                            |  |
|   |                       |                 |             |           |        |                     | Above Ground Storage Tank (AST)                   |  |                        |   |                              |  |                            |  |
| 05-14-2025 14:02  | FL01R-W@2'            | 586.1           | No Staining | No Odor   | Yes    | Lab                 | Buried or Partially Buried Vessel                 |  |                        |   |                              |  |                            |  |
| 05-14-2025 14:53  | FL01R-S@3'            | 1.6             | No Staining | No Odor   | Yes    | Lab                 | Separator   |  |                        |   |                              |  |                            |  |
|   |                       |                 |             |           |        |                     | Emission Control Device (ECD)                     |  |                        |   |                              |  |                            |  |
|   |                       |                 |             |           |        |                     | Dump Line   |  |                        |   |                              |  |                            |  |
|   |                       |                 |             |           |        |                     | Wellhead  |  |                        |   |                              |  |                            |  |
|   |                       |                 |             |           |        |                     | Flowline  |  | 1                      | ✓ |                              |  |                            |  |
|   |                       |                 |             |           |        |                     | Other:  |  |                        |   |                              |  |                            |  |
|   |                       |                 |             |           |        |                     | <b>Soil Loads Removed</b>                         |  |                        |   |                              |  |                            |  |
|   |                       |                 |             |           |        |                     | <b>IMPACTED SOIL IDENTIFIED?</b> Yes              |  |                        |   |                              |  |                            |  |
|   |                       |                 |             |           |        |                     | <b>ESTIMATED VOLUME OF IMPACTS:</b>               |  |                        |   |                              |  |                            |  |
|   |                       |                 |             |           |        |                     | Date  |  | Number                 |   | CY                           |  |                            |  |
|   |                       |                 |             |           |        |                     |   |  |                        |   |                              |  |                            |  |
|   |                       |                 |             |           |        |                     |   |  |                        |   |                              |  |                            |  |
|   |                       |                 |             |           |        |                     |   |  |                        |   |                              |  |                            |  |
|   |                       |                 |             |           |        |                     | Total Removed                                     |  | 0                      |   | 0                            |  |                            |  |
|   |                       |                 |             |           |        |                     | <b>Disposal Facility:</b>                         |  |                        |   |                              |  |                            |  |
|   |                       |                 |             |           |        |                     | <b>Groundwater Recovery</b>                       |  |                        |   |                              |  |                            |  |
|   |                       |                 |             |           |        |                     | <b>DATE GW ENCOUNTERED:</b>                       |  |                        |   | <b>DEPTH:</b>                |  |                            |  |
|   |                       |                 |             |           |        |                     | <b>GROUNDWATER IN CONTACT WITH IMPACTED SOIL?</b> |  |                        |   |                              |  |                            |  |
|   |                       |                 |             |           |        |                     | <b>LNAPL OR SHEEN OBSERVED ON GW?</b>             |  |                        |   |                              |  |                            |  |
| <b>GROUNDWATER SAMPLING</b>   |                       |                 |             |           |        |                     | Date  |  | BBLs                   |   |                              |  |                            |  |
| Date/Time   | Groundwater Sample ID | Depth Collected | Turbid?     | Sheen?    | Odor?  | Photo?              |   |  |                        |   |                              |  |                            |  |
|   |                       |                 |             |           |        |                     |   |  |                        |   |                              |  |                            |  |
|   |                       |                 |             |           |        |                     |   |  |                        |   |                              |  |                            |  |
|   |                       |                 |             |           |        |                     | Total Removed                                     |  | 0                      |   |                              |  |                            |  |
|   |                       |                 |             |           |        |                     | <b>Disposal Facility:</b>                         |  |                        |   |                              |  |                            |  |

# Chevron Rockies Business Unit

## Field Qualitative Criteria for ECMC Reporting Associated with the Discovery of Potentially Impacted Material

If answered **Yes** to any of the questions listed below, this may suggest the presence of potentially impacted materials as outlined in ECMC Rule 912. Out of an abundance of caution, a “Yes” response will be reported to the ECMC within 24 hours after discovery, regardless of laboratory results. **Immediately notify the RBU Remediation Team.** Include a copy of this Field Qualitative Spill Criteria Checklist in the field Report.

Please answer the following questions when on-site:

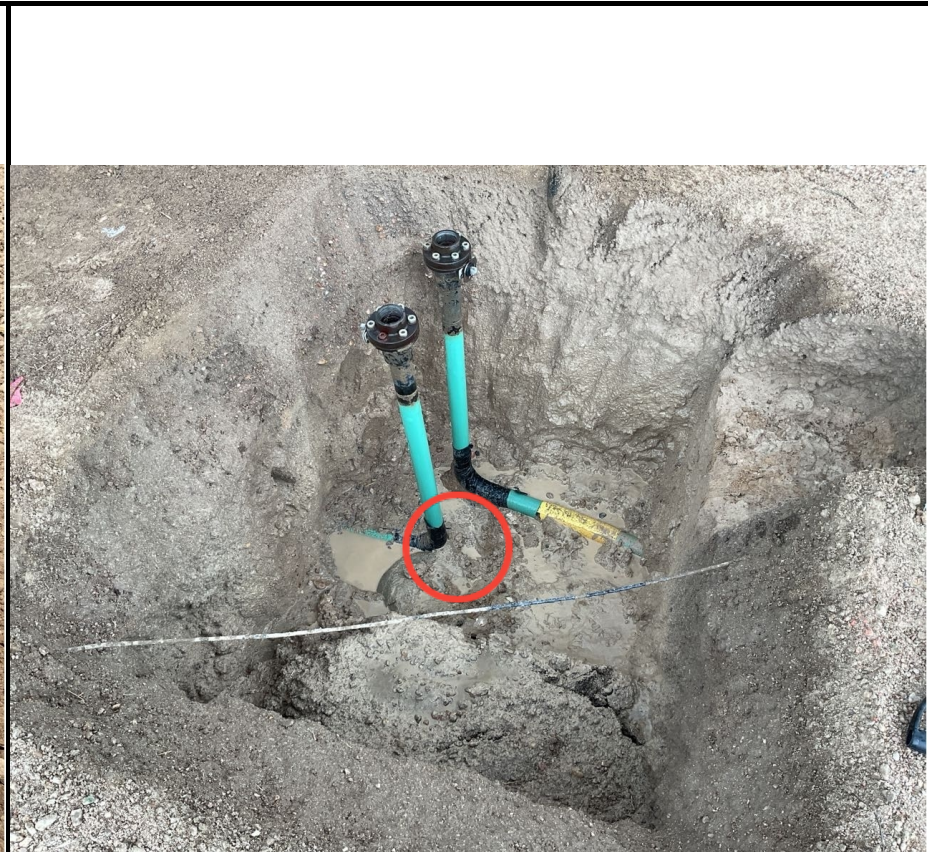
1. Is there visible petroleum hydrocarbon staining in the soil? No\_\_\_\_\_
2. Does the soil sample from the stained area have a petroleum odor? No\_\_\_\_\_
3. Is there a petroleum hydrocarbon sheen on the nearby surface water? No\_\_\_\_\_
4. Does there appear to be a sheen of the surface of accumulated groundwater or seeps within the excavation indicative of petroleum? No\_\_\_\_\_
5. Is stained soil in contact with groundwater? No\_\_\_\_\_

Please Include relevant photos of the site conditions for items 1-5.

Location name: Segal 8-2-24

Please Circle Facility Type: Flowline





|                                 |                |                        |  |
|---------------------------------|----------------|------------------------|--|
| <b>Equipment ID:</b> FL01R-W@2' |                | <b>Equipment Type:</b> |  |
| <b>Material:</b>                | <b>Volume:</b> | <b>Contents:</b>       |  |
| <b>Notes/Conditions:</b>        |                |                        |  |

|  |                |                        |  |
|--|----------------|------------------------|--|
| <b>Equipment ID:</b> FL01R-S@3'                          |                | <b>Equipment Type:</b> |  |
| <b>Material:</b>   | <b>Volume:</b> | <b>Contents:</b>       |  |
| <b>Notes/Conditions:</b> Water is from hydrovac and rain |                |                        |  |