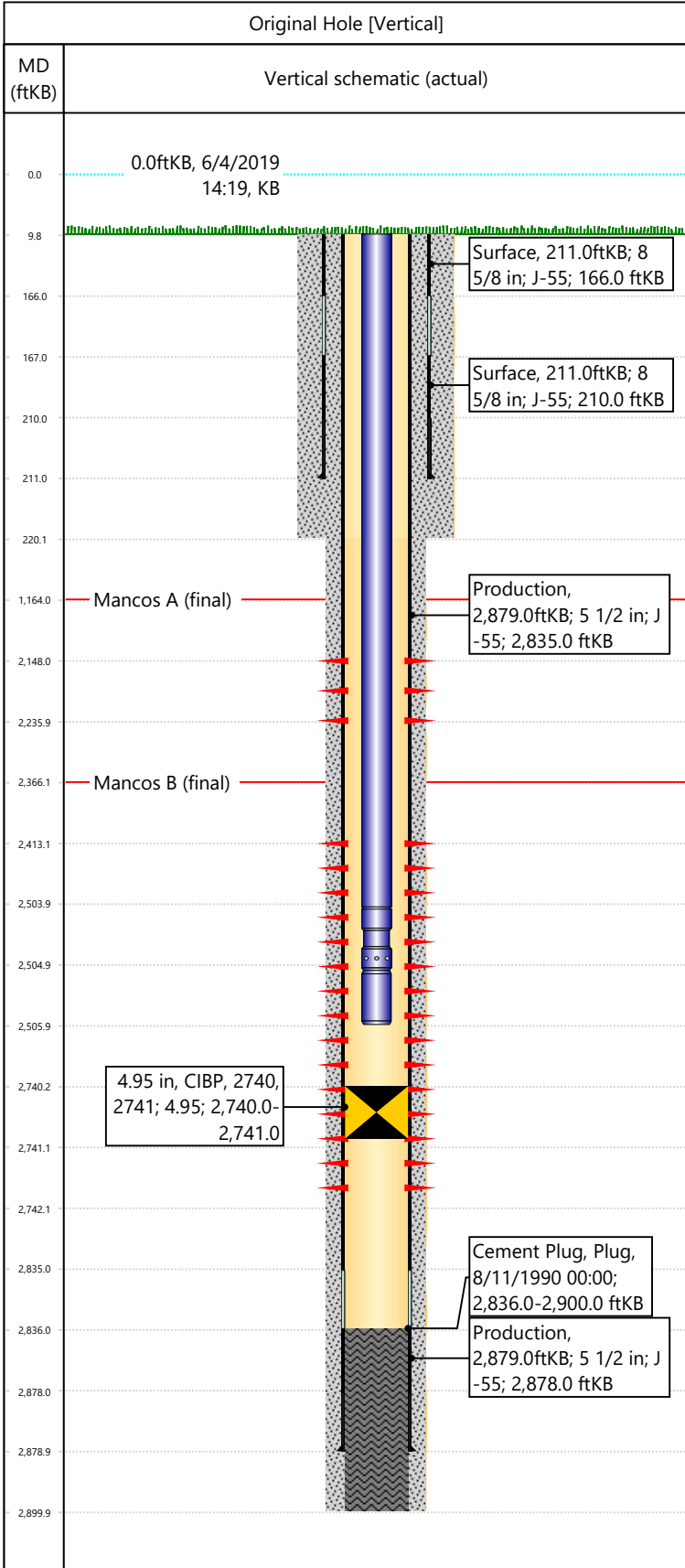


Well Name: DRAGON TRAIL UN 1077

API/UWI 05103094350000	Surface Legal Location SESW-S21-T2S-R102W-6PM	Field Name Dragon Trail	License #	State/Province CO	Well Configuration Type Vertical
Original KB Elevation (ft) 6,720	KB-Tubing Head Distance (ft) 10	Spud Date 8/8/1990 00:00	Rig Release Date 8/11/1990 00:00	PBDT (All) (KB) Original Hole - 2,836.0	Total Depth All (TVD) (KB) Original Hole - 2,900.0



Section Description		Size (in)	Btm Depth (ftKB)	
Surface		12 1/4		
Surface		12 1/4	220.0	
Production		7 7/8	2,900.0	

Formation Name		Final Top MD (ftKB)
Mancos A		1,164.0
Mancos B		2,366.0

Csg Des	OD (in)	Wt/Len (lb/ft)	Grade	Set Depth (ftKB)
Surface	8 5/8	24.00	J-55	211.0
Production	5 1/2	15.50	J-55	2,879.0

Date	Top (ftKB)	Btm (ftKB)	Linked Zone
10/4/2002	2148	2236	Mancos A, Original Hole
8/27/1990	2413	2742	Mancos B, Original Hole

Tubing Description		Run Date	String Length (ft)	Set Depth (ftKB)
Tubing - Production		2/8/2003	2,496.00	2,506.0

Item Des	Icon	Jts	OD (in)	Wt (lb/ft)	Grade	Len (ft)
Tubing		79	2 3/8	4.70	J-55	2494
Pump Seating Nipple		1	2 3/8	4.70	J-55	1
Tbg Collar		1	2 3/8	4.70	J-55	1

Rod Description		Run Date	String Length (ft)	Set Depth (ftKB)
CIBP		10/4/2002	4.95	2740-2741

Description	Proposed/Actual Run	Type	Top Depth (ftKB)
Surface Casing Cement	Actual	Casing	10.0
Production Casing Cement	Actual	Casing	10.0
Cement Plug	Actual	Plug	2,836.0