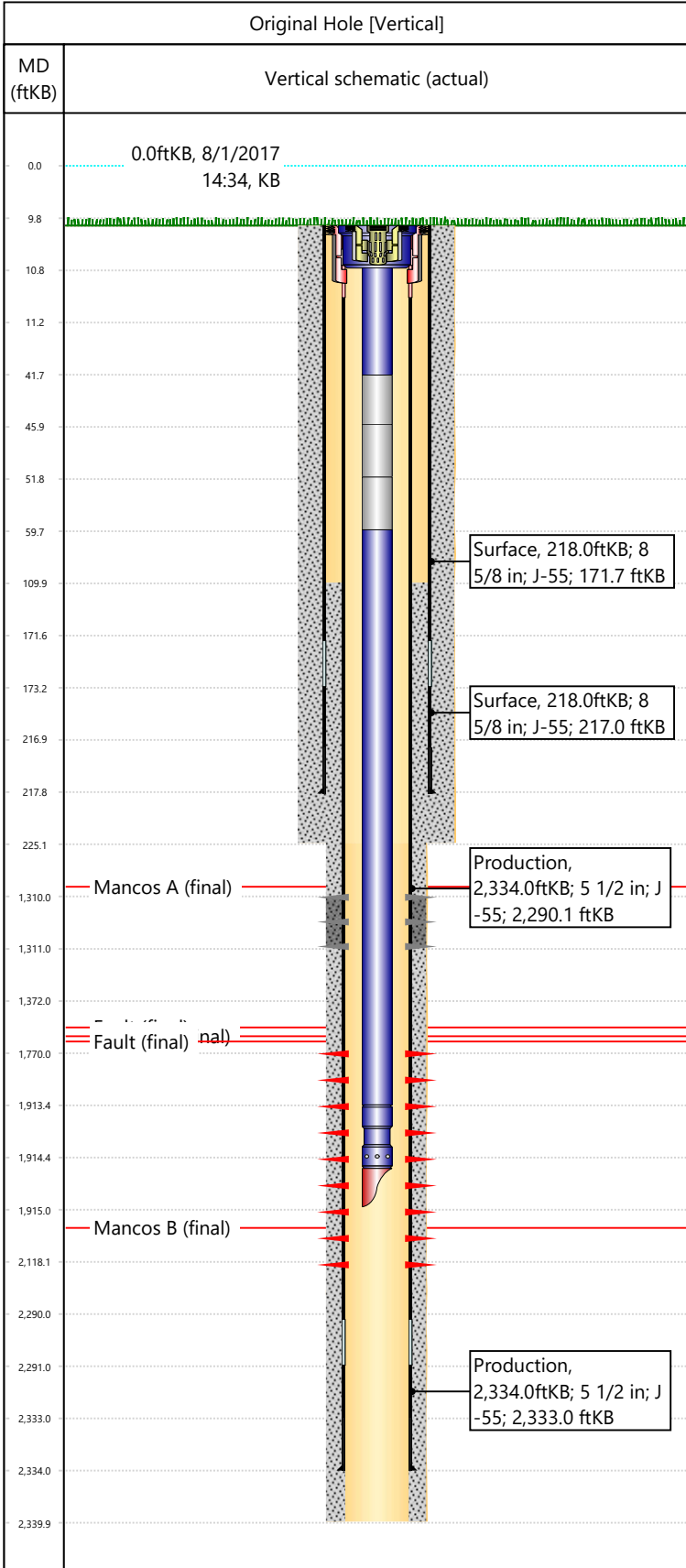


Well Name: DOUGLAS CK UN 44

API/UWI 05103093100000	Surface Legal Location NWSW-S4-T3S-R101W-6PM	Field Name Douglas Creek Unit	License #	State/Province CO	Well Configuration Type Vertical
Original KB Elevation (ft) 6,387	KB-Tubing Head Distance (ft) 10	Spud Date 6/15/1988 12:00	Rig Release Date 7/3/1988 04:00	PBTD (All) (KB) Original Hole - 2,292.0	Total Depth All (TVD) (KB) Original Hole - 2,340.0



Section Description	Size (in)	Btm Depth (ftKB)
Production	7 7/8	
Surface	12 1/4	
Surface	12 1/4	225.0
Production	7 7/8	2,340.0

Formation Name	Final Top MD (ftKB)
Mancos A	1,086.0
Fault	1,578.0
Mancos B	1,636.0
Fault	1,680.0
Mancos B	1,987.0

Csg Des	OD (in)	Wt/Len (lb/ft)	Grade	Set Depth (ftKB)
Surface	8 5/8	24.00	J-55	218.0
Production	5 1/2	15.50	J-55	2,334.0

Date	Top (ftKB)	Btm (ftKB)	Linked Zone
7/26/1988	1310	1311	Mancos A, Original Hole
8/12/1988	1770	2118	Mancos B, Original Hole

Item Des	Icon	Jts	OD (in)	Wt (lb/ft)	Grade	Len (ft)
Tubing Hanger		1	6.151	4.70	J-55	0.8
Tubing		1	2 3/8	4.70	J-55	31
Tubing Pup Joint		1	2 3/8	4.70	J-55	4
Tubing Pup Joint		1	2 3/8	4.70	J-55	6
Tubing Pup Joint		1	2 3/8	4.70	J-55	8
Tubing		58	2 3/8	4.70	J-55	1853.6
Pump Seating Nipple		1	2 3/8	4.70	J-55	1.1
Mule Shoe Guide		1	2 3/8	4.70	J-55	0.5

Item Des	Icon	Jts	OD (in)	Wt (lb/ft)	Grade	Len (ft)
Tubing Hanger		1	6.151	4.70	J-55	0.8
Tubing		1	2 3/8	4.70	J-55	31
Tubing Pup Joint		1	2 3/8	4.70	J-55	4
Tubing Pup Joint		1	2 3/8	4.70	J-55	6
Tubing Pup Joint		1	2 3/8	4.70	J-55	8
Tubing		58	2 3/8	4.70	J-55	1853.6
Pump Seating Nipple		1	2 3/8	4.70	J-55	1.1
Mule Shoe Guide		1	2 3/8	4.70	J-55	0.5

Item Des	Icon	Jts	OD (in)	Wt (lb/ft)	Grade	Len (ft)
Tubing Hanger		1	6.151	4.70	J-55	0.8
Tubing		1	2 3/8	4.70	J-55	31
Tubing Pup Joint		1	2 3/8	4.70	J-55	4
Tubing Pup Joint		1	2 3/8	4.70	J-55	6
Tubing Pup Joint		1	2 3/8	4.70	J-55	8
Tubing		58	2 3/8	4.70	J-55	1853.6
Pump Seating Nipple		1	2 3/8	4.70	J-55	1.1
Mule Shoe Guide		1	2 3/8	4.70	J-55	0.5

Item Des	Icon	Jts	OD (in)	Wt (lb/ft)	Grade	Len (ft)
Tubing Hanger		1	6.151	4.70	J-55	0.8
Tubing		1	2 3/8	4.70	J-55	31
Tubing Pup Joint		1	2 3/8	4.70	J-55	4
Tubing Pup Joint		1	2 3/8	4.70	J-55	6
Tubing Pup Joint		1	2 3/8	4.70	J-55	8
Tubing		58	2 3/8	4.70	J-55	1853.6
Pump Seating Nipple		1	2 3/8	4.70	J-55	1.1
Mule Shoe Guide		1	2 3/8	4.70	J-55	0.5

Item Des	Icon	Jts	OD (in)	Wt (lb/ft)	Grade	Len (ft)
Tubing Hanger		1	6.151	4.70	J-55	0.8
Tubing		1	2 3/8	4.70	J-55	31
Tubing Pup Joint		1	2 3/8	4.70	J-55	4
Tubing Pup Joint		1	2 3/8	4.70	J-55	6
Tubing Pup Joint		1	2 3/8	4.70	J-55	8
Tubing		58	2 3/8	4.70	J-55	1853.6
Pump Seating Nipple		1	2 3/8	4.70	J-55	1.1
Mule Shoe Guide		1	2 3/8	4.70	J-55	0.5

Item Des	Icon	Jts	OD (in)	Wt (lb/ft)	Grade	Len (ft)
Tubing Hanger		1	6.151	4.70	J-55	0.8
Tubing		1	2 3/8	4.70	J-55	31
Tubing Pup Joint		1	2 3/8	4.70	J-55	4
Tubing Pup Joint		1	2 3/8	4.70	J-55	6
Tubing Pup Joint		1	2 3/8	4.70	J-55	8
Tubing		58	2 3/8	4.70	J-55	1853.6
Pump Seating Nipple		1	2 3/8	4.70	J-55	1.1
Mule Shoe Guide		1	2 3/8	4.70	J-55	0.5

Item Des	Icon	Jts	OD (in)	Wt (lb/ft)	Grade	Len (ft)
Tubing Hanger		1	6.151	4.70	J-55	0.8
Tubing		1	2 3/8	4.70	J-55	31
Tubing Pup Joint		1	2 3/8	4.70	J-55	4
Tubing Pup Joint		1	2 3/8	4.70	J-55	6
Tubing Pup Joint		1	2 3/8	4.70	J-55	8
Tubing		58	2 3/8	4.70	J-55	1853.6
Pump Seating Nipple		1	2 3/8	4.70	J-55	1.1
Mule Shoe Guide		1	2 3/8	4.70	J-55	0.5