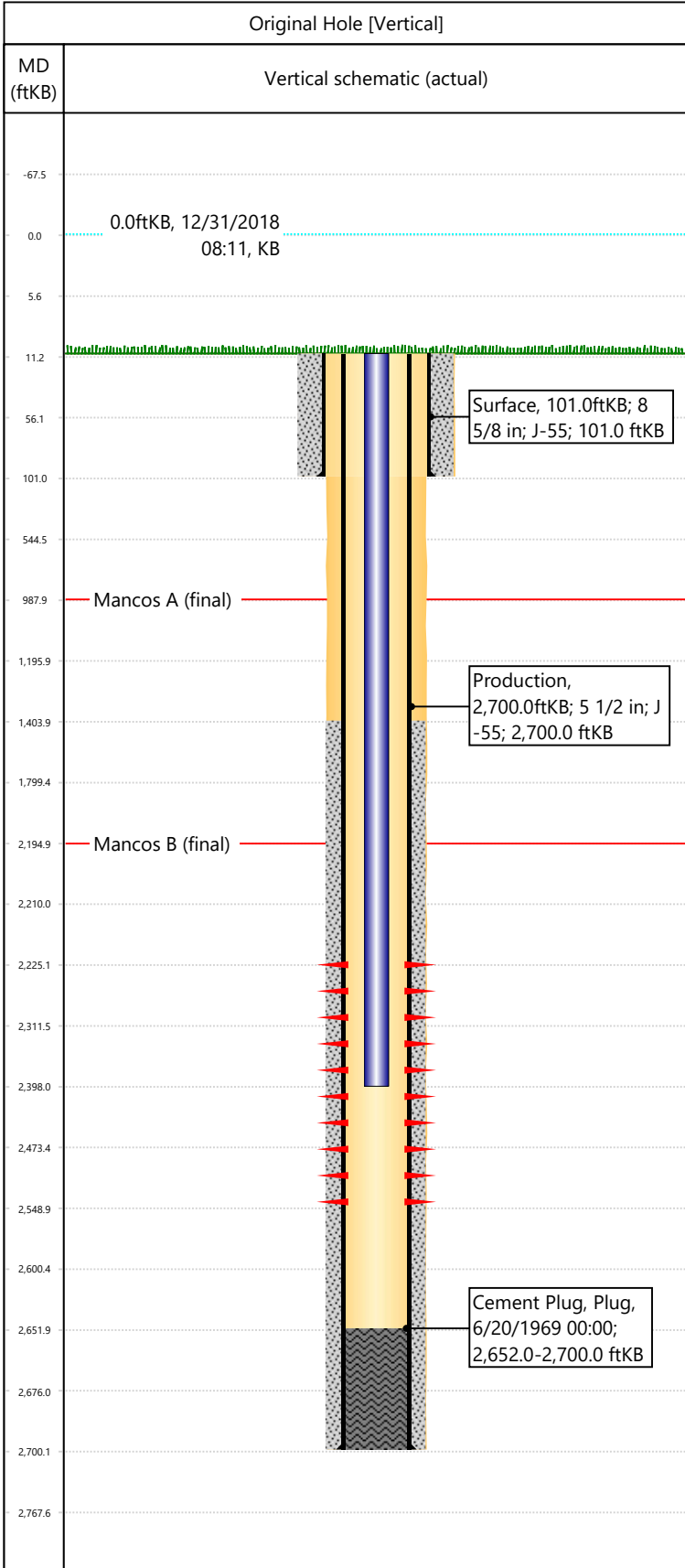


Well Name: DRAGON TRAIL UN 1040

API/UWI 05103072130000	Surface Legal Location NENE-S25-T2S-R102W-6PM	Field Name Dragon Trail	License #	State/Province CO	Well Configuration Type Vertical
Original KB Elevation (ft) 6,486	KB-Tubing Head Distance (ft) 11	Spud Date 6/17/1969 00:00	Rig Release Date 6/21/1969 00:00	PBTD (All) (KB) Original Hole - 2,652.0	Total Depth All (TVD) (KB) Original Hole - 2,700.0



Section Description	Size (in)	Btm Depth (ftKB)
Surface	12 1/4	
Surface	12 1/4	101.0
Production	7 7/8	2,700.0

Formation Name	Final Top MD (ftKB)
Mancos A	988.0
Mancos B	2,195.0

Csg Des	OD (in)	Wt/Len (lb/ft)	Grade	Set Depth (ftKB)
Surface	8 5/8	24.00	J-55	101.0
Production	5 1/2	17.00	J-55	2,700.0

Date	Top (ftKB)	Btm (ftKB)	Linked Zone
7/8/1969	2225	2549	Mancos B, Original Hole

Total

Tubing Description	Run Date	String Length (ft)	Set Depth (ftKB)
Tubing - Production	11/21/1989	2,387.00	2,398.0

Item Des	Icon	Jts	OD (in)	Wt (lb/ft)	Grade	Len (ft)
Tubing		74	1.9	2.76	J-55	2387

Rod Description	Run Date	String Length (ft)	Set Depth (ftKB)

Des	Icon	OD (in)	Top (ftKB)	Btm (ftKB)	Run Date	Pull Date

Description	Proposed/Actual Run	Type	Top Depth (ftKB)
Surface Casing Cement	Actual	Casing	11.0
Cement Plug	Actual	Plug	2,652.0
Production Casing Cement	Actual	Casing	1,404.0