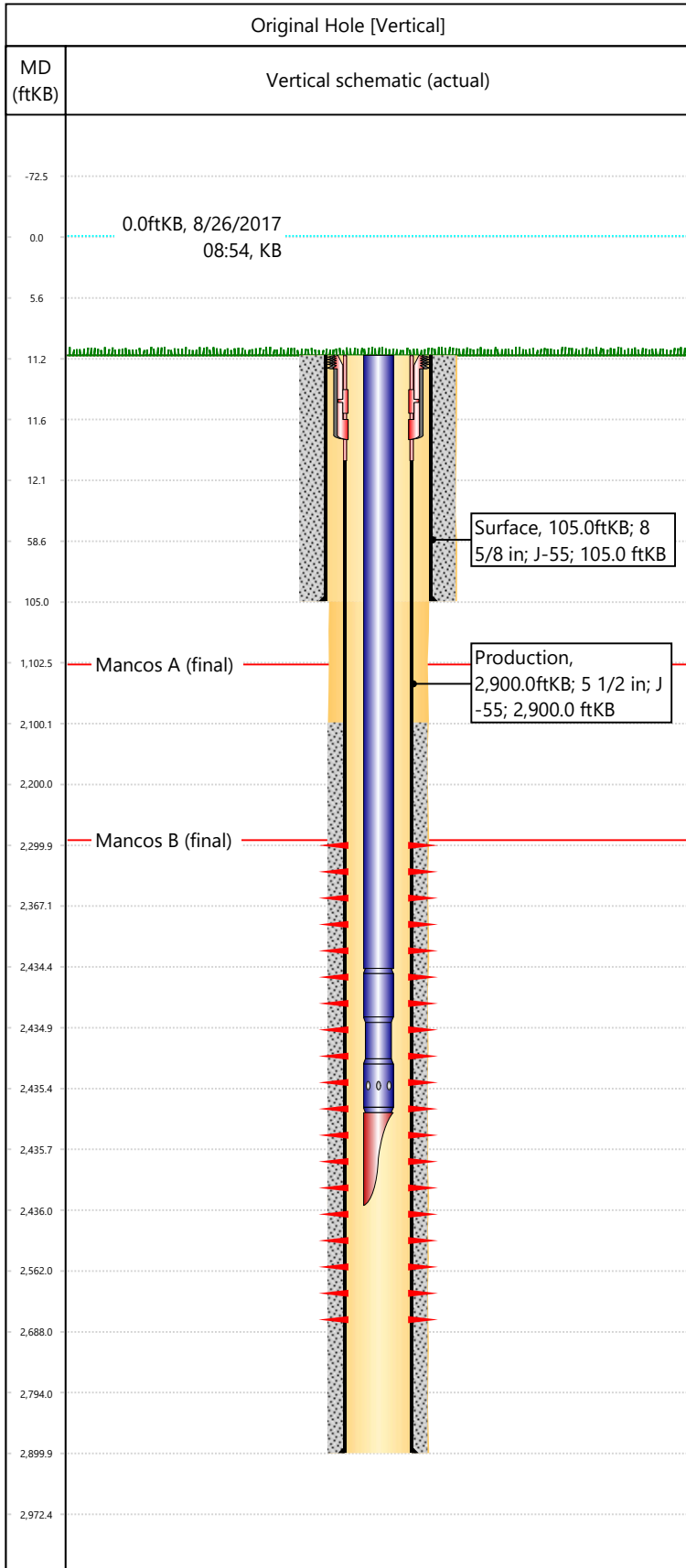


Well Name: DRAGON TRAIL UN 1027

API/UWI 05103071190000	Surface Legal Location SENW-S2-T3S-R102W-6PM	Field Name Dragon Trail	License #	State/Province CO	Well Configuration Type Vertical
Original KB Elevation (ft) 6,720	KB-Tubing Head Distance (ft) 11	Spud Date 5/20/1968 00:00	Rig Release Date 5/25/1968 00:00	PBDT (All) (KB) Original Hole - 2,862.0	Total Depth All (TVD) (KB) Original Hole - 2,900.0



Section Description	Size (in)	Btm Depth (ftKB)
Production	7 7/8	
Surface	12 1/4	
Surface	12 1/4	105.0
Production	7 7/8	2,900.0

Formation Name	Final Top MD (ftKB)
Mancos A	1,135.0
Mancos B	2,293.0

Csg Des	OD (in)	Wt/Len (lb/ft)	Grade	Set Depth (ftKB)
Surface	8 5/8	24.00	J-55	105.0
Production	5 1/2	14.00	J-55	2,900.0

Date	Top (ftKB)	Btm (ftKB)	Linked Zone
7/1/1968	2300	2688	Mancos B, Original Hole

Total

Tubing Description	Run Date	String Length (ft)	Set Depth (ftKB)
Tubing - Production	10/23/2017	2,425.00	2,436.0

Item Des	Icon	Jts	OD (in)	Wt (lb/ft)	Grade	Len (ft)
Tubing 2-3/8" Re-Run		77	2 3/8	4.70	J-55	2423.4
Seating Nipple		1	2 3/8	4.70	J-55	1.1
Mule Shoe Guide		1	2 3/8	4.70	J-55	0.5

Rod Description	Run Date	String Length (ft)	Set Depth (ftKB)

Item Des	Icon	Jts	OD (in)	Wt (lb/ft)	Grade	Len (ft)

Des	Icon	OD (in)	Top (ftKB)	Btm (ftKB)	Run Date	Pull Date

Description	Proposed/Actual Run	Type	Top Depth (ftKB)
Surface Casing Cement	Actual	Casing	11.0
Production Casing Cement	Actual	Casing	2,100.0