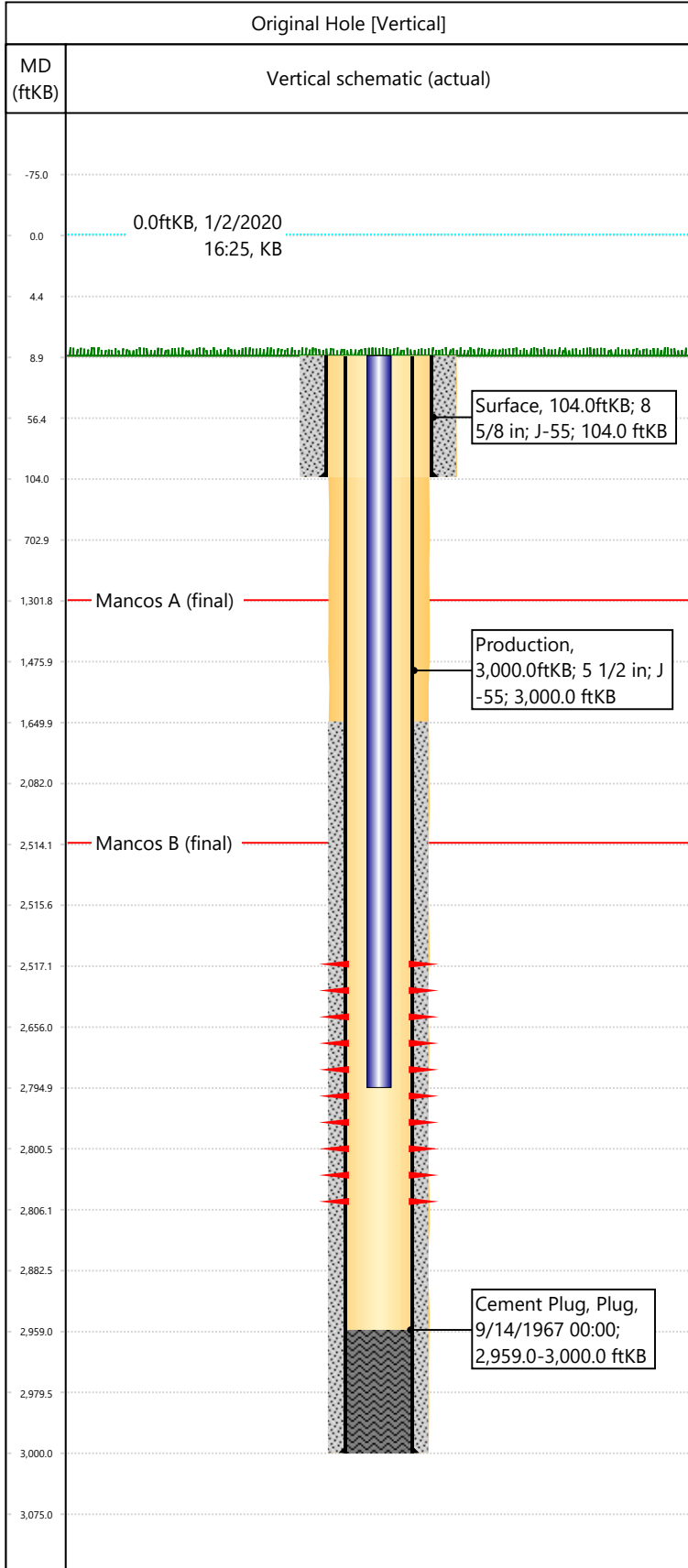


Well Name: DRAGON TRAIL UN 1026

API/UWI 05103070660000	Surface Legal Location SWNW-S25-T2S-R102W-6PM	Field Name Dragon Trail	License #	State/Province CO	Well Configuration Type Vertical
Original KB Elevation (ft) 6,837	KB-Tubing Head Distance (ft) 9	Spud Date 9/12/1967 00:00	Rig Release Date 9/16/1967 00:00	PBTD (All) (KB) Original Hole - 2,959.0	Total Depth All (TVD) (KB) Original Hole - 3,000.0



Section Description	Size (in)	Btm Depth (ftKB)
Surface	12 1/4	
Surface	12 1/4	104.0
Production	7 7/8	3,000.0

Formation Name	Final Top MD (ftKB)
Mancos A	1,302.0
Mancos B	2,514.0

Csg Des	OD (in)	Wt/Len (lb/ft)	Grade	Set Depth (ftKB)
Surface	8 5/8	24.00	J-55	104.0
Production	5 1/2	14.00	J-55	3,000.0

Date	Top (ftKB)	Btm (ftKB)	Linked Zone
9/28/1967	2517	2806	Mancos B, Original Hole

Tubing Description	Run Date	String Length (ft)	Set Depth (ftKB)
Tubing - Production	11/14/1967	2,786.00	2,795.0

Item Des	Icon	Jts	OD (in)	Wt (lb/ft)	Grade	Len (ft)
Tubing		83	1.9	2.76	J-55	2786

Rod Description	Run Date	String Length (ft)	Set Depth (ftKB)

Des	Icon	OD (in)	Top (ftKB)	Btm (ftKB)	Run Date	Pull Date

Description	Proposed/Actual Run	Type	Top Depth (ftKB)
Surface Casing Cement	Actual	Casing	9.0
Cement Plug	Actual	Plug	2,959.0
Production Casing Cement	Actual	Casing	1,650.0