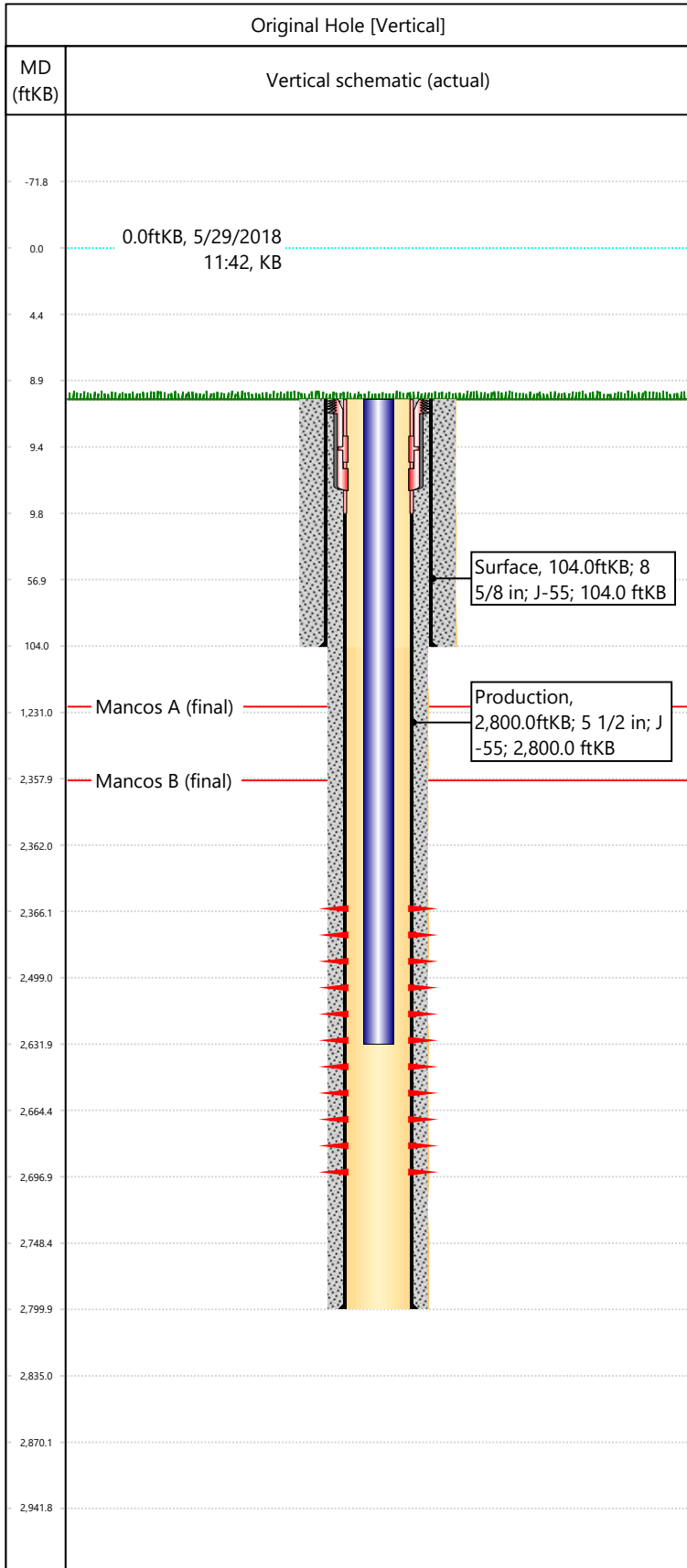


Well Name: DRAGON TRAIL UN 1021

API/UWI 05103070610000	Surface Legal Location SWSE-Sec24-T2S-R102W-6PM	Field Name Dragon Trail	License #	State/Province CO	Well Configuration Type Vertical
Original KB Elevation (ft) 6,590	KB-Tubing Head Distance (ft) 9	Spud Date 9/17/1967 00:00	Rig Release Date 9/21/1967 00:00	PBD (All) (KB) Original Hole - 2,760.0	Total Depth All (TVD) (KB) Original Hole - 2,800.0



Hole Size						
Section Description	Size (in)	Btm Depth (ftKB)				
Surface	12 1/4	104.0				
Section Description	Size (in)	Btm Depth (ftKB)				
Production	7 7/8	2,800.0				
Formations						
Formation Name	Final Top MD (ftKB)					
Mancos A	1,144.0					
Formation Name	Final Top MD (ftKB)					
Mancos B	2,358.0					
Casing Strings						
Csg Des	OD (in)	Wt/Len (lb/ft)	Grade	Set Depth (ftKB)		
Surface	8 5/8	24.00	J-55	104.0		
Production	5 1/2	14.00	J-55	2,800.0		
Perforations						
Date	Top (ftKB)	Btm (ftKB)	Linked Zone			
9/21/1967	2366	2697	Mancos B, Original Hole			
Total						
Tubing Strings						
Tubing Description	Run Date	String Length (ft)	Set Depth (ftKB)			
Tubing - Production	8/27/1999	2,623.00	2,632.0			
Item Des	Icon	Jts	OD (in)	Wt (lb/ft)	Grade	Len (ft)
Tubing			2 3/8	4.70	J-55	2623
Rod Strings						
Rod Description	Run Date	String Length (ft)	Set Depth (ftKB)			
Item Des	Icon	Jts	OD (in)	Wt (lb/ft)	Grade	Len (ft)
Other In Hole						
Des	Icon	OD (in)	Top (ftKB)	Btm (ftKB)	Run Date	Pull Date
Cement						
Description	Proposed/Actual Run	Type	Top Depth (ftKB)			
Surface Casing Cement	Actual	Casing	9.0			
Description	Proposed/Actual Run	Type	Top Depth (ftKB)			
Production Casing Cement	Actual	Casing	9.0			