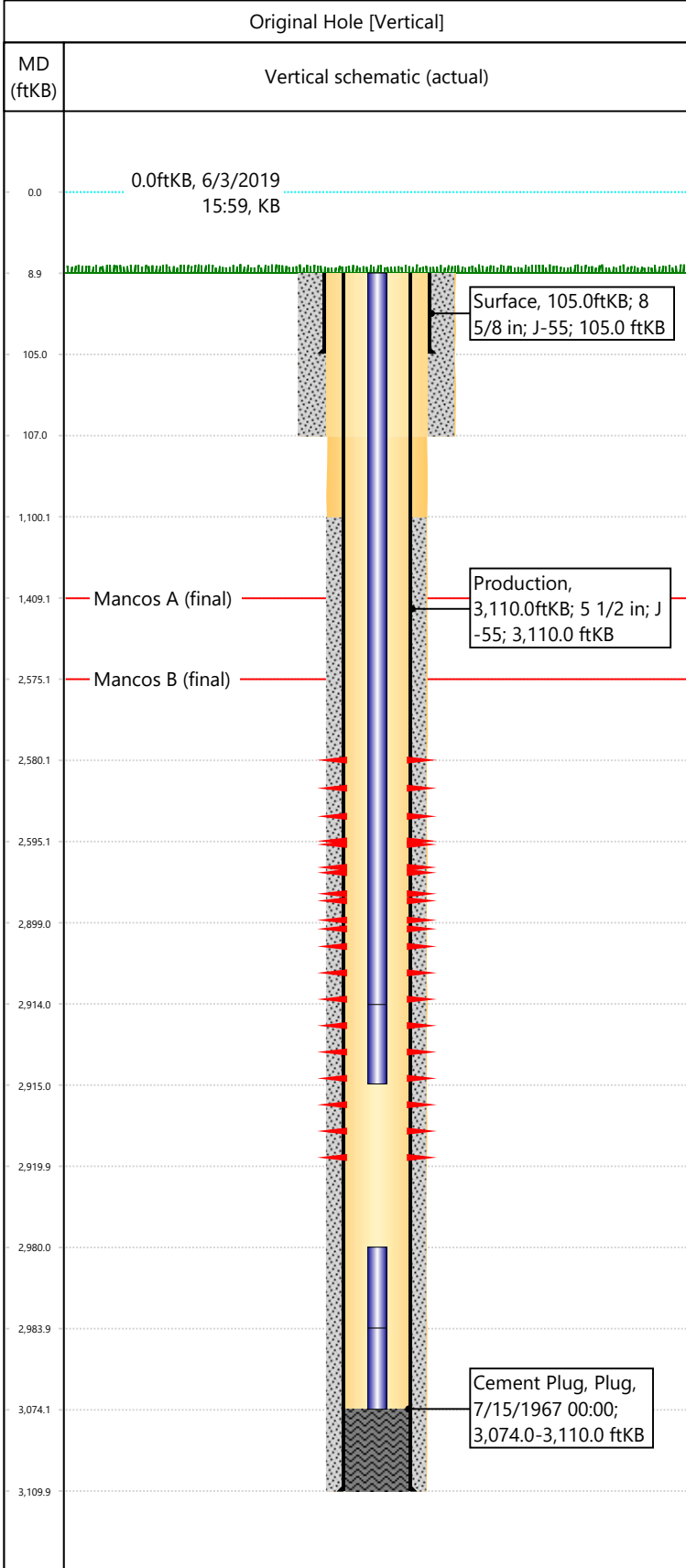


Well Name: DRAGON TRAIL UN 1015

API/UWI 05103070270000	Surface Legal Location NENW-S34-T2S-R102W-6PM	Field Name Dragon Trail	License #	State/Province CO	Well Configuration Type Vertical
Original KB Elevation (ft) 7,074	KB-Tubing Head Distance (ft) 9	Spud Date 7/9/1967 00:00	Rig Release Date 7/15/1967 00:00	PBTD (All) (KB) Original Hole - 3,074.0	Total Depth All (TVD) (KB) Original Hole - 3,110.0



Section Description	Size (in)	Btm Depth (ftKB)
Surface	12 1/4	
Surface	12 1/4	107.0
Production	7 7/8	3,110.0

Formation Name	Final Top MD (ftKB)
Mancos A	1,409.0
Mancos B	2,575.0

Csg Des	OD (in)	Wt/Len (lb/ft)	Grade	Set Depth (ftKB)
Surface	8 5/8	24.00	J-55	105.0
Production	5 1/2	14.00	J-55	3,110.0

Date	Top (ftKB)	Btm (ftKB)	Linked Zone
7/18/1967	2580	2899	Mancos B, Original Hole
8/7/1971	2595	2920	Mancos B, Original Hole

Total

Tubing Description	Run Date	String Length (ft)	Set Depth (ftKB)
Tubing - Production	7/21/1967	94.00	3,074.0

Item Des	Icon	Jts	OD (in)	Wt (lb/ft)	Grade	Len (ft)
Parted Blast Sub (Fish)		1	1 1/2	2.76	JCW-55	4
Unscrewed Tubing (Fish)		4	1 1/2	2.76	JCW-55	90

Tubing Description	Run Date	String Length (ft)	Set Depth (ftKB)
Tubing - Production	8/11/1971	2,906.00	2,915.0

Item Des	Icon	Jts	OD (in)	Wt (lb/ft)	Grade	Len (ft)
Tubing		90	1 1/2			2905
Pinned Sub		1	1 1/2			1

Rod Description	Run Date	String Length (ft)	Set Depth (ftKB)

Item Des	Icon	Jts	OD (in)	Wt (lb/ft)	Grade	Len (ft)

Des	Icon	OD (in)	Top (ftKB)	Btm (ftKB)	Run Date	Pull Date

Description	Proposed/Actual Run	Type	Top Depth (ftKB)
Surface Casing Cement	Actual	Casing	9.0
Production Casing Cement	Actual	Casing	1,100.0
Cement Plug	Actual	Plug	3,074.0