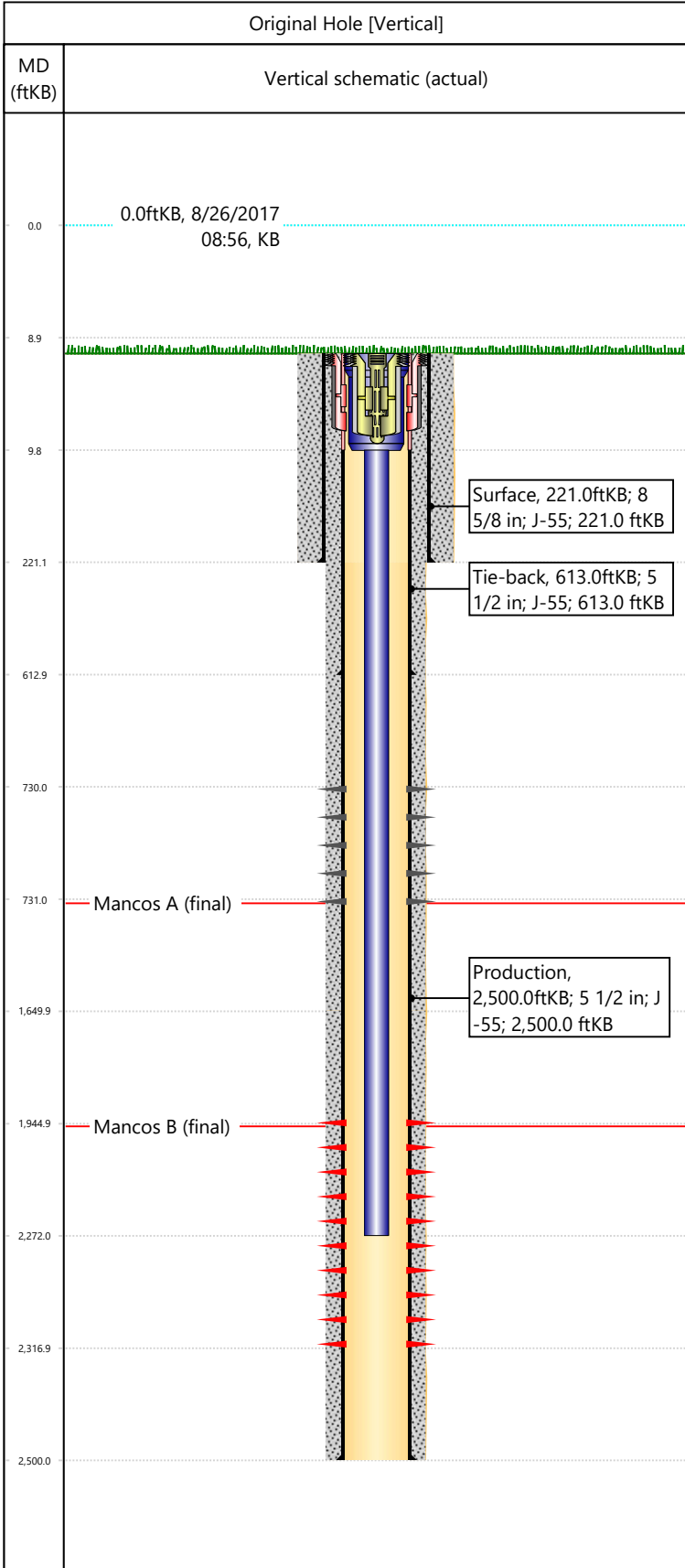


Well Name: DRAGON TRAIL UN 1013

API/UWI 05103070290000	Surface Legal Location SESE-S34-T2S-R102W-6PM	Field Name Dragon Trail	License #	State/Province CO	Well Configuration Type Vertical
Original KB Elevation (ft) 6,375	KB-Tubing Head Distance (ft) 9	Spud Date 9/22/1967 00:00	Rig Release Date 9/27/1967 00:00	PBD (All) (KB) Original Hole - 2,472.0	Total Depth All (TVD) (KB) Original Hole - 2,500.0



Section Description	Size (in)	Btm Depth (ftKB)
Production	7 7/8	
Surface	12 1/4	
Surface	12 1/4	221.0
Production	7 7/8	2,500.0

Formation Name	Final Top MD (ftKB)
Mancos A	778.0
Mancos B	1,954.0

Csg Des	OD (in)	Wt/Len (lb/ft)	Grade	Set Depth (ftKB)
Surface	8 5/8	24.00	J-55	221.0
Tie-back	5 1/2	15.50	J-55	613.0
Production	5 1/2	14.00	J-55	2,500.0

Date	Top (ftKB)	Btm (ftKB)	Linked Zone
10/4/1989	730	731	Mancos A, Original Hole
10/1/1967	1945	2317	Mancos B, Original Hole

Total

Tubing Description	Run Date	String Length (ft)	Set Depth (ftKB)
Tubing - Production	10/6/1989	2,263.00	2,272.0

Item Des	Icon	Jts	OD (in)	Wt (lb/ft)	Grade	Len (ft)
Tubing Hanger		1	4.95	2.76		1
Tubing		59	1.9	2.76		2262

Rod Description	Run Date	String Length (ft)	Set Depth (ftKB)

Item Des	Icon	Jts	OD (in)	Wt (lb/ft)	Grade	Len (ft)

Des	Icon	OD (in)	Top (ftKB)	Btm (ftKB)	Run Date	Pull Date

Description	Proposed/Actual Run	Type	Top Depth (ftKB)
Surface Casing Cement	Actual	Casing	9.0
Production Casing Cement	Actual	Casing	1,650.0
Squeeze	Actual	Casing - Remedial	730.0
Production Casing Cement	Actual	Casing	9.0