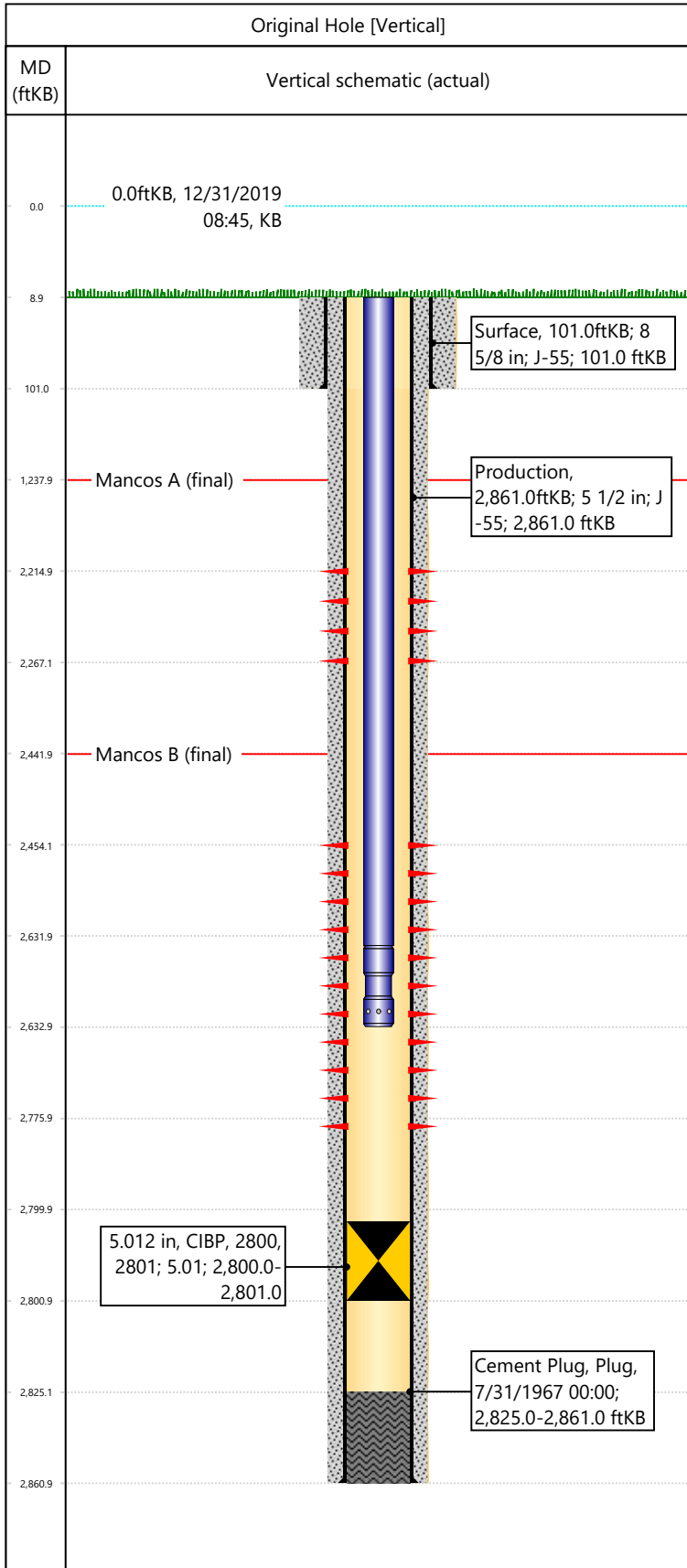


Well Name: DRAGON TRAIL UN 1012

API/UWI 05103070250000	Surface Legal Location NWNW-S28-T2S-R102W-6PM	Field Name Dragon Trail	License #	State/Province CO	Well Configuration Type Vertical
Original KB Elevation (ft) 6,819	KB-Tubing Head Distance (ft) 9	Spud Date 7/26/1967 00:00	Rig Release Date 7/31/1967 00:00	PBDT (All) (KB) Original Hole - 2,800.0	Total Depth All (TVD) (KB) Original Hole - 2,861.0



Section Description	Size (in)	Btm Depth (ftKB)
Surface	12 1/4	
Surface	12 1/4	101.0
Production	7 7/8	2,861.0

Formation Name	Final Top MD (ftKB)
Mancos A	1,238.0
Mancos B	2,442.0

Csg Des	OD (in)	Wt/Len (lb/ft)	Grade	Set Depth (ftKB)
Surface	8 5/8	24.00	J-55	101.0
Production	5 1/2	14.00	J-55	2,861.0

Date	Top (ftKB)	Btm (ftKB)	Linked Zone
11/13/2002	2215	2267	Mancos A, Original Hole
8/3/1967	2454	2776	Mancos B, Original Hole

Total

Tubing Description	Run Date	String Length (ft)	Set Depth (ftKB)
Tubing - Production	6/6/2003	2,624.00	2,633.0

Item Des	Icon	Jts	OD (in)	Wt (lb/ft)	Grade	Len (ft)
Tubing		83	2 3/8	4.70	J-55	2623
Pump Seating Nipple		1	2 3/8	4.70	J-55	1

Rod Description	Run Date	String Length (ft)	Set Depth (ftKB)

Des	Icon	OD (in)	Top (ftKB)	Btm (ftKB)	Run Date	Pull Date
CIBP		5.012	2800	2801	11/13/2002	

Description	Proposed/Actual Run	Type	Top Depth (ftKB)
Surface Casing Cement	Actual	Casing	9.0
Production Casing Cement	Actual	Casing	9.0
Cement Plug	Actual	Plug	2,825.0