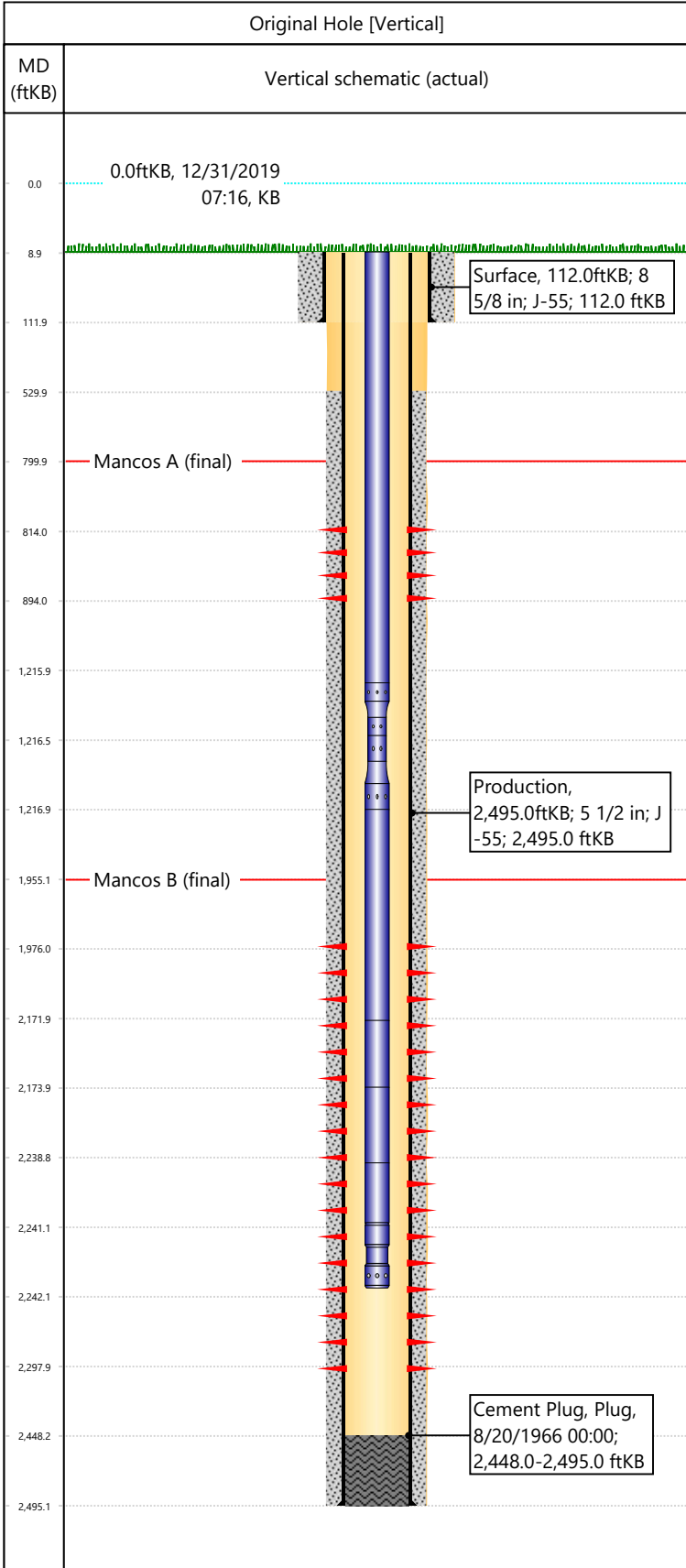


Well Name: DRAGON TRAIL UN 1011

API/UWI 05103010120000	Surface Legal Location SWSW-S25-T2S-R102W-6PM	Field Name Dragon Trail	License #	State/Province CO	Well Configuration Type Vertical
Original KB Elevation (ft) 6,443	KB-Tubing Head Distance (ft) 9	Spud Date 8/15/1966 00:00	Rig Release Date 8/20/1966 00:00	PBTD (All) (KB) Original Hole - 2,448.0	Total Depth All (TVD) (KB) Original Hole - 2,495.0



Hole Size		
Section Description Surface	Size (in) 12 1/4	Btm Depth (ftKB)
Section Description Surface	Size (in) 12 1/4	Btm Depth (ftKB) 112.0
Section Description Production	Size (in) 7 7/8	Btm Depth (ftKB) 2,495.0

Formations	
Formation Name Mancos A	Final Top MD (ftKB) 800.0
Formation Name Mancos B	Final Top MD (ftKB) 1,955.0

Casing Strings				
Csg Des	OD (in)	Wt/Len (lb/ft)	Grade	Set Depth (ftKB)
Surface	8 5/8	24.00	J-55	112.0
Production	5 1/2	14.00	J-55	2,495.0

Perforations			
Date	Top (ftKB)	Btm (ftKB)	Linked Zone
5/28/1967	814	894	Mancos A, Original Hole
8/24/1966	1976	2298	Mancos B, Original Hole

Total

Tubing Strings			
Tubing Description	Run Date	String Length (ft)	Set Depth (ftKB)
Tubing - Production	10/28/1992	2,233.00	2,242.0

Item Des	Icon	Jts	OD (in)	Wt (lb/ft)	Grade	Len (ft)
Tubing		40	1.9			1207
XO w/ Collar		1	1.9			0.5
XO w/ Collar		1	1.9			0.5
Tubing		30	1.9			955
Flag Pup		1	1.9			2
Tubing		2	1.9			65
Pup		1	1.9			2
Pump Seating Nipple		1	1.9			1

Rod Strings			
Rod Description	Run Date	String Length (ft)	Set Depth (ftKB)

Item Des	Icon	Jts	OD (in)	Wt (lb/ft)	Grade	Len (ft)

Other In Hole						
Des	Icon	OD (in)	Top (ftKB)	Btm (ftKB)	Run Date	Pull Date

Cement			
Description	Proposed/Actual Run	Type	Top Depth (ftKB)
Surface Casing Cement	Actual	Casing	9.0
Production Casing Cement	Actual	Casing	530.0
Cement Plug	Actual	Plug	2,448.0