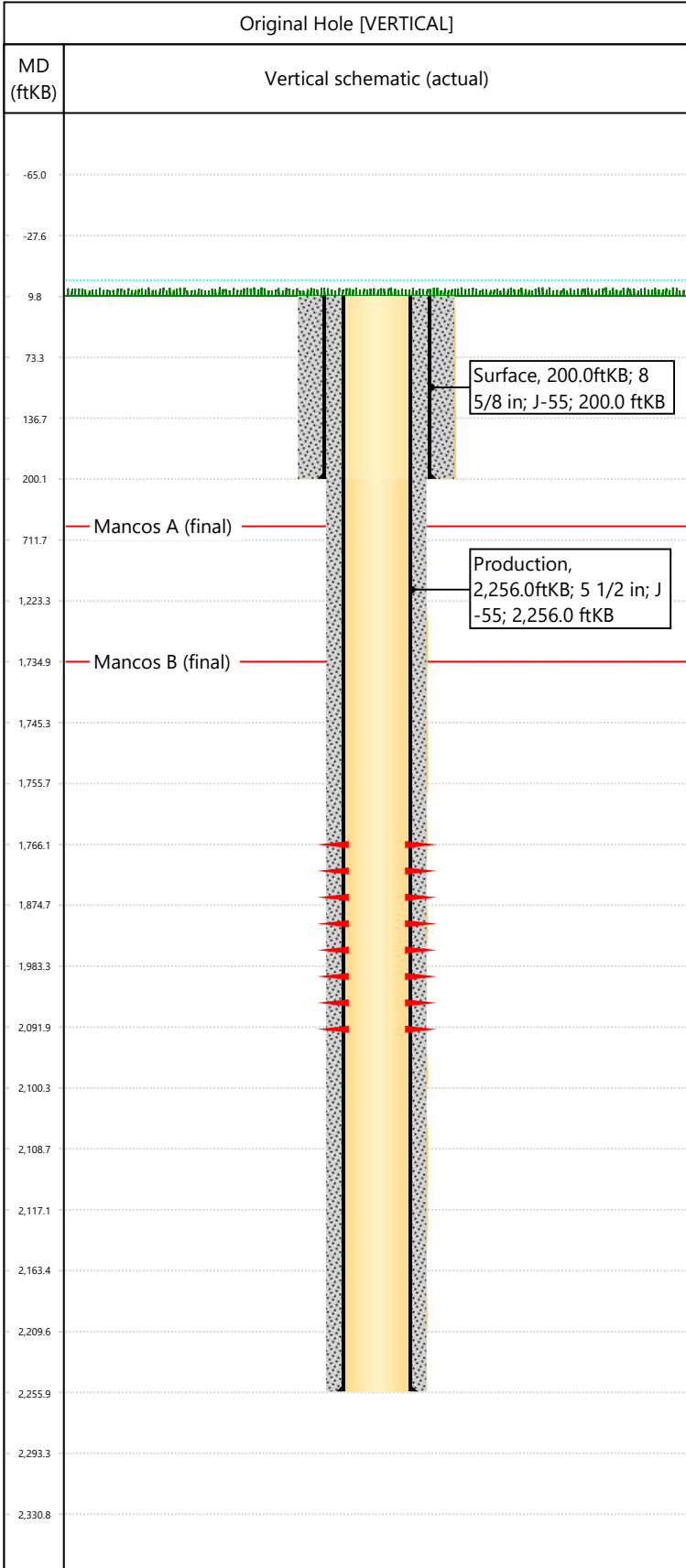


Well Name: DOUGLAS CK UN 33

API/UWI 05103093210000	Surface Legal Location 06-03S-101W	Field Name Douglas Creek	License #	State/Province CO	Well Configuration Type VERTICAL
Original KB Elevation (ft) 6,403	KB-Tubing Head Distance (ft)	Spud Date 6/11/1988 00:00	Rig Release Date	PBTD (All) (KB)	Total Depth All (TVD) (KB)



Hole Size		Size (in)	Btm Depth (ftKB)			
Section Description	Surface	12 1/4	200.0			
Section Description	Production	7 7/8	2,256.0			
Formations						
Formation Name	Mancos A	Final Top MD (ftKB)	595.0			
Formation Name	Mancos B	Final Top MD (ftKB)	1,735.0			
Casing Strings						
Csg Des	OD (in)	Wt/Len (lb/ft)	Grade	Set Depth (ftKB)		
Surface	8 5/8	24.00	J-55	200.0		
Production	5 1/2	15.50	J-55	2,256.0		
Perforations						
Date	Top (ftKB)	Btm (ftKB)	Zone			
8/18/1988	1766	2092	Mancos B, Original Hole			
Total						
Tubing Strings						
Tubing Description	Run Date	String Length (ft)	Set Depth (ftKB)			
Item Des	Icon	Jts	OD (in)	Wt (lb/ft)	Grade	Len (ft)
Rod Strings						
Rod Description	Run Date	String Length (ft)	Set Depth (ftKB)			
Item Des	Icon	Jts	OD (in)	Wt (lb/ft)	Grade	Len (ft)
Other In Hole						
Des	Icon	OD (in)	Top (ftKB)	Btm (ftKB)	Run Date	Pull Date
Cement						
Description	Proposed/Actual Run	Type	Top Depth (ftKB)			
Production Casing Cement	Actual	Casing	10.0			
Surface Casing Cement	Actual	Casing	10.0			