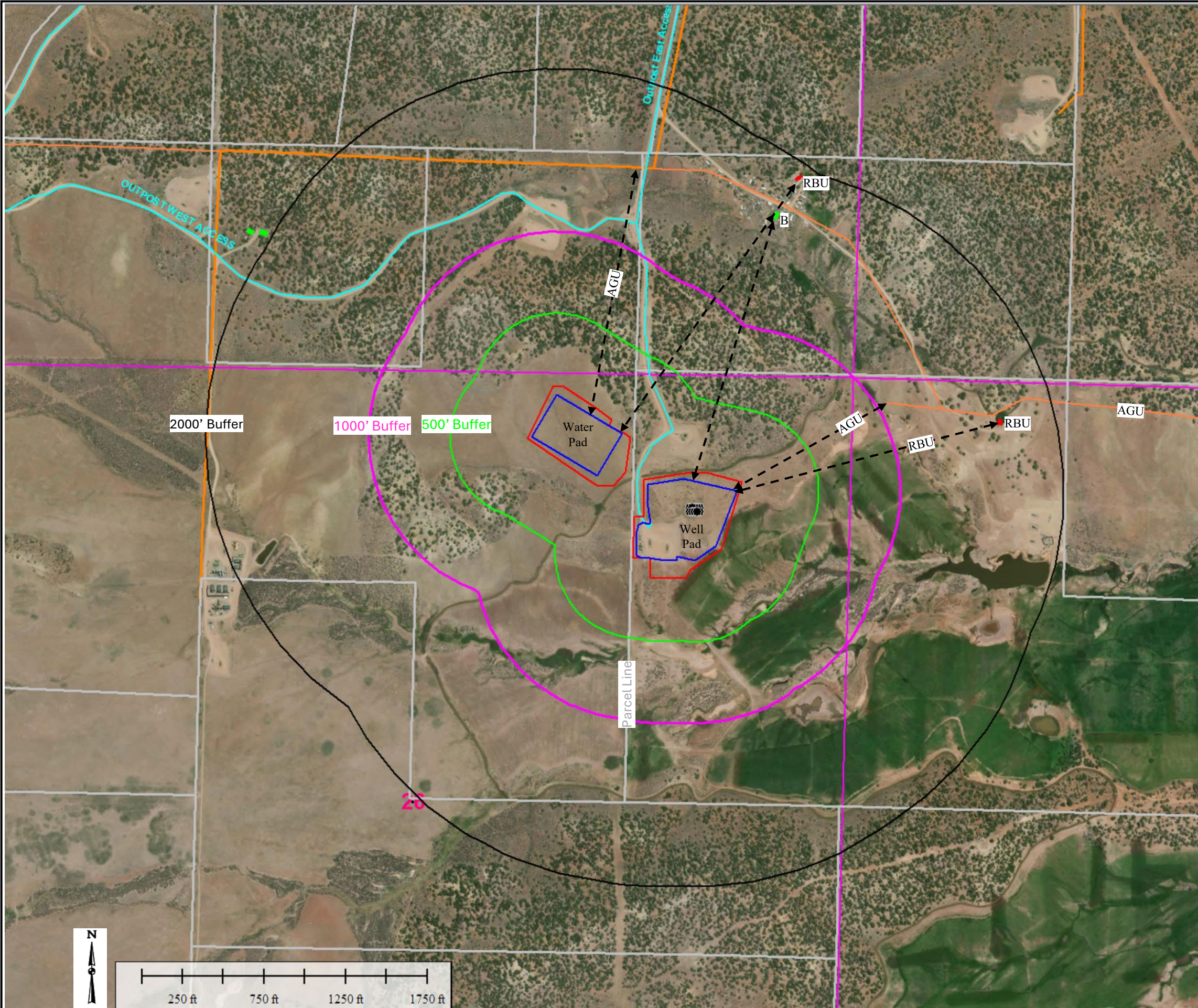


**Cultural Items Map**  
**Outpost 33-8 Pad**  
 Catamount Energy Partners

Quarter Sec.: NE  
 Section: 26  
 Township: 33N  
 Range: 8W  
 N.M. P.M.  
 La Plata County, Co



Distance to nearest Cultural Feature from:	Well Pad		Water Pad	
	Distance From Edge of Working Pad	Direction	Distance From Edge of Working Pad	Direction
Building	1660	NE	1609	NE
Residential Building Unit	1643	E	1868	NE
HOBUs	5280+	NE	5280+	NE
Designated Outside Activity Area	5280+	NE	5280+	NE
Public Road	5280+	E	5280+	E
Above-ground Utility	1065	NE	1635	N
Railroad	5280+	N	5280+	N
Property Line	30	W	76	E
School Facility	5280+	NE	5280+	NE
Child Care Center	5280+	NE	5280+	NE
Boundary of DIC	0		0	
RBU, HOBUs, or School Facility within a Disproportionately Impacted Community within 2000 feet	1643	E	1868	NE

304.b.(2).C.ii --> 304.b.(3).B			
Number of cultural features within:	Working Pad Radii		
	0-500 feet	501-1,000 feet	1,001-2,000 feet
BUs	0	0	2
RBUs	0	0	2
HOBUs	0	0	0
School Properties	0	0	0
School Facilities	0	0	0
DOAAs	0	0	0

Oil and Gas Location	1000' Buffer
Working Pad Surface	2000' Buffer
Parcel Boundary/Property Line	Building (B)
500' Buffer	Residential Building Unit (RBU)
Wellhead Location	Above Ground Utility (AGU)

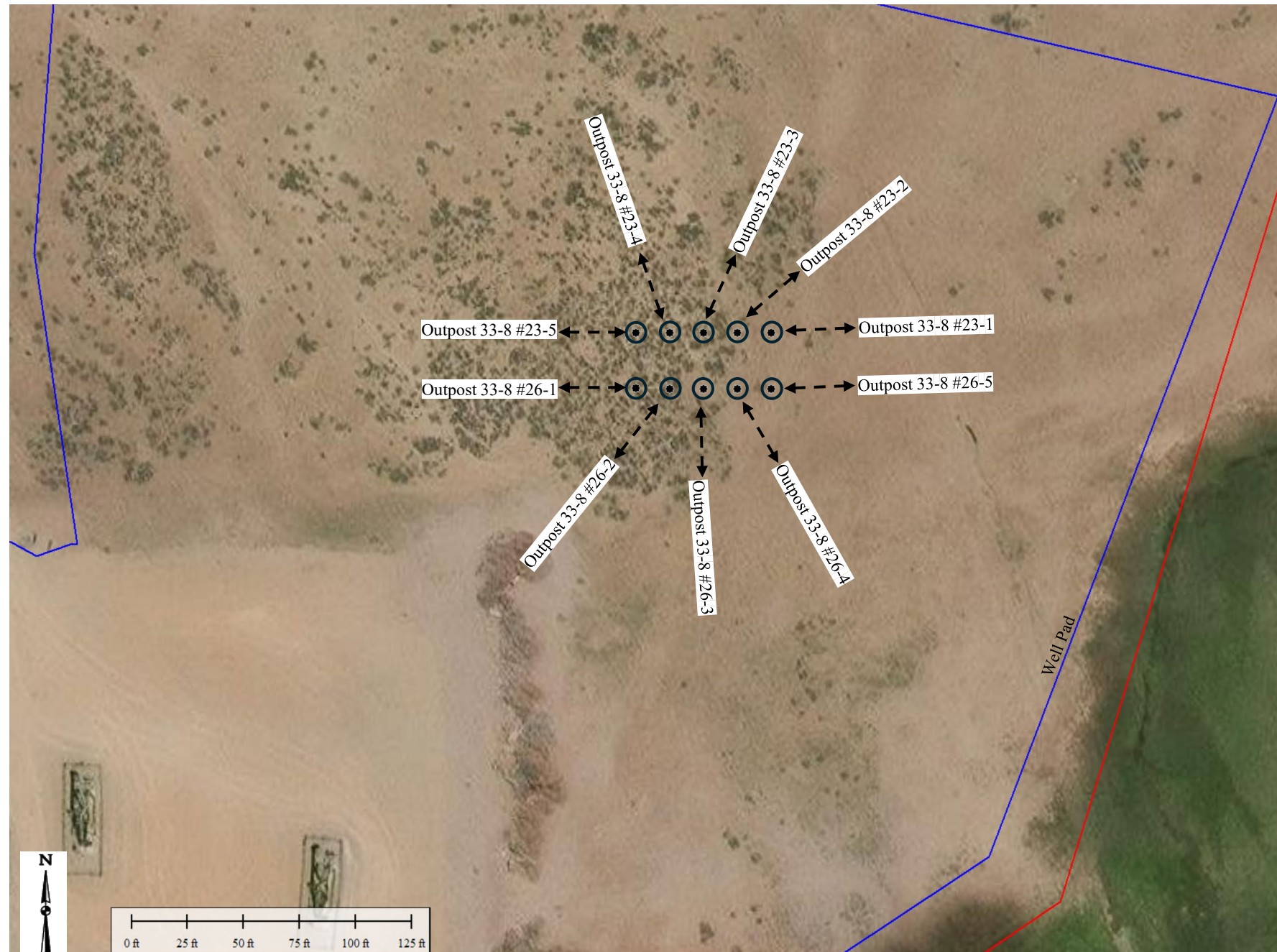
- Notes:
1. The entire proposed Working Pad Surface and proposed spacing unit are within a Disproportionately Impacted Community. Please see D.I.C. maps for further information
  2. There are no visible High Occupancy Building units nor School properties within 2000' of the proposed Working Pad Surface
  3. There are no Railroads, Mines, Visible Injection Wells and Associated Facilities within 2000' of the proposed Working Pad Surface
  4. There are no visible sewers with manholes within 2000' of the proposed Working Pad Surface

**Cultural Items Map**  
**Outpost 33-8 Pad**  
 Catamount Energy Partners

Quarter Sec.: NE  
 Section: 26  
 Township: 33N  
 Range: 8W  
 N.M. P.M.  
 La Plata County, Co

Measured From the Nearest	Outpost 33-8-23#1		Outpost 33-8-23#2		Outpost 33-8-23#3		Outpost 33-8-23#4		Outpost 33-8-23#5		Outpost 33-8-26#1		Outpost 33-8-26#2		Outpost 33-8-26#3		Outpost 33-8-26#4		Outpost 33-8-26#5	
Building	1829	NE	1833	NE	1837	NE	1842	NE	1847	NE	1871	NE	1866	NE	1861	NE	1857	NE	1854	NE
Building Unit	1890	E	1904	E	1919	E	1933	E	1948	E	1955	E	1940	E	1926	E	1911	E	1897	E
Residential Building Unit	1890	E	1904	E	1919	E	1933	E	1948	E	1955	E	1940	E	1926	E	1911	E	1897	E
Public Road (County Road 319)	5280+	E	5280+	E	5280+	E	5280+	E	5280+	E	5280+	E	5280+	E	5280+	E	5280+	E	5280+	E
Above Ground Utility	1313	NE	1326	NE	1339.5	NE	1353	NE	1365	NE	1378	NE	1365	NE	1352	NE	1339	NE	1326	NE
Railroad	5280+	N	5280+	N	5280+	N	5280+	N	5280+	N	5280+	N	5280+	N	5280+	N	5280+	N	5280+	N
Property Line	417	W	402	W	387	W	372	W	357	W	357	W	372	W	387	W	402	W	417	W

Note:  
 All distances are +/- and in feet



	Oil and Gas Location
	Working Pad Surface
	Wellhead Location

Data Source: Maxar Imagery Basemap Products