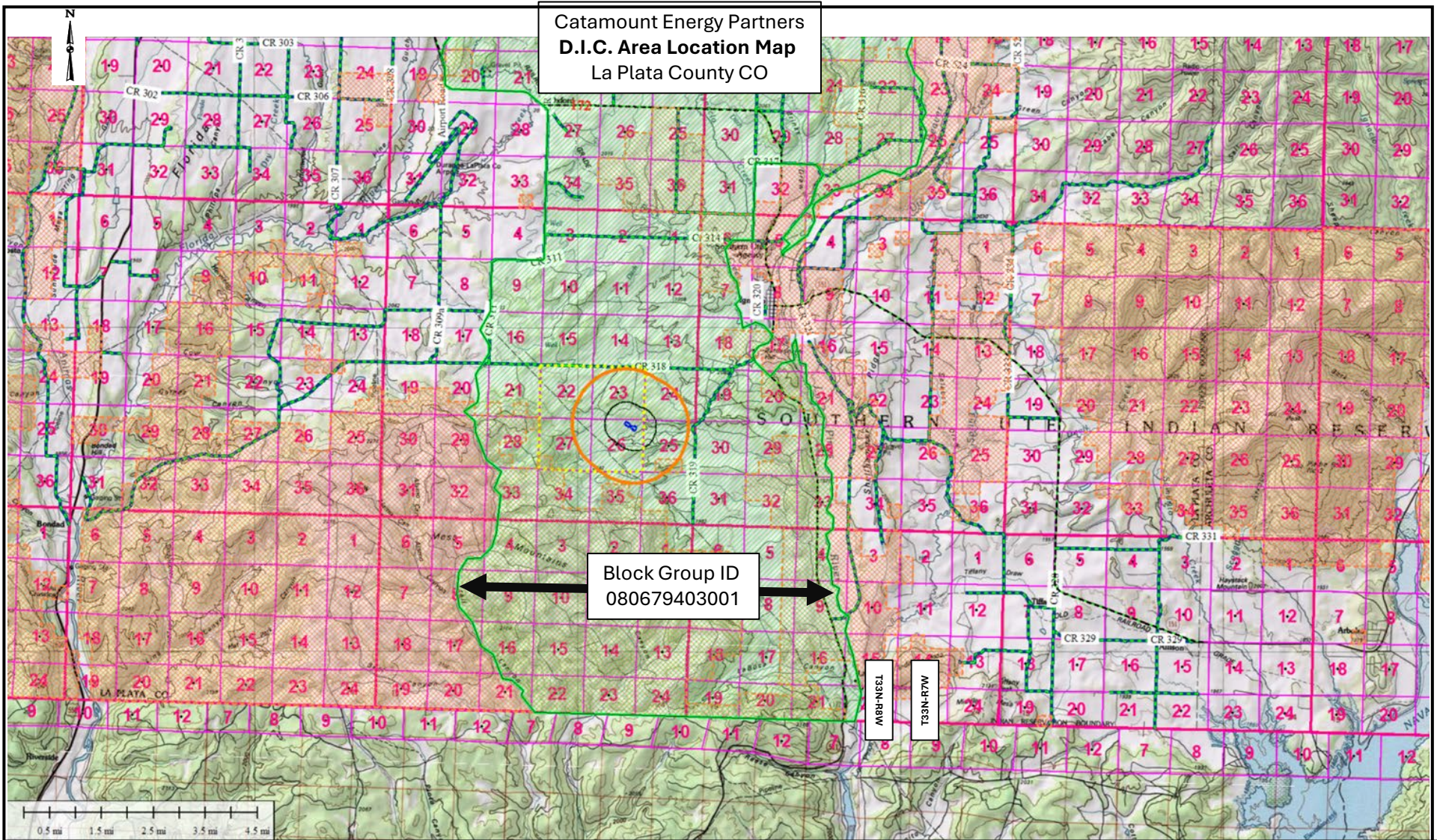









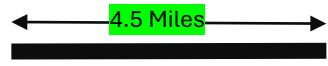
Catamount Energy Partners  
**D.I.C. Area Location Map**  
 La Plata County CO




Block Group ID  
 080679403001

-  Proposed Mineral Development
-  Pad Location
-  D.I.C. Area
-  S.U.I.T Surface
-  Section Line
-  2000' Radius
-  5280' Radius

**Proposed Outpost 33-8 Pad**



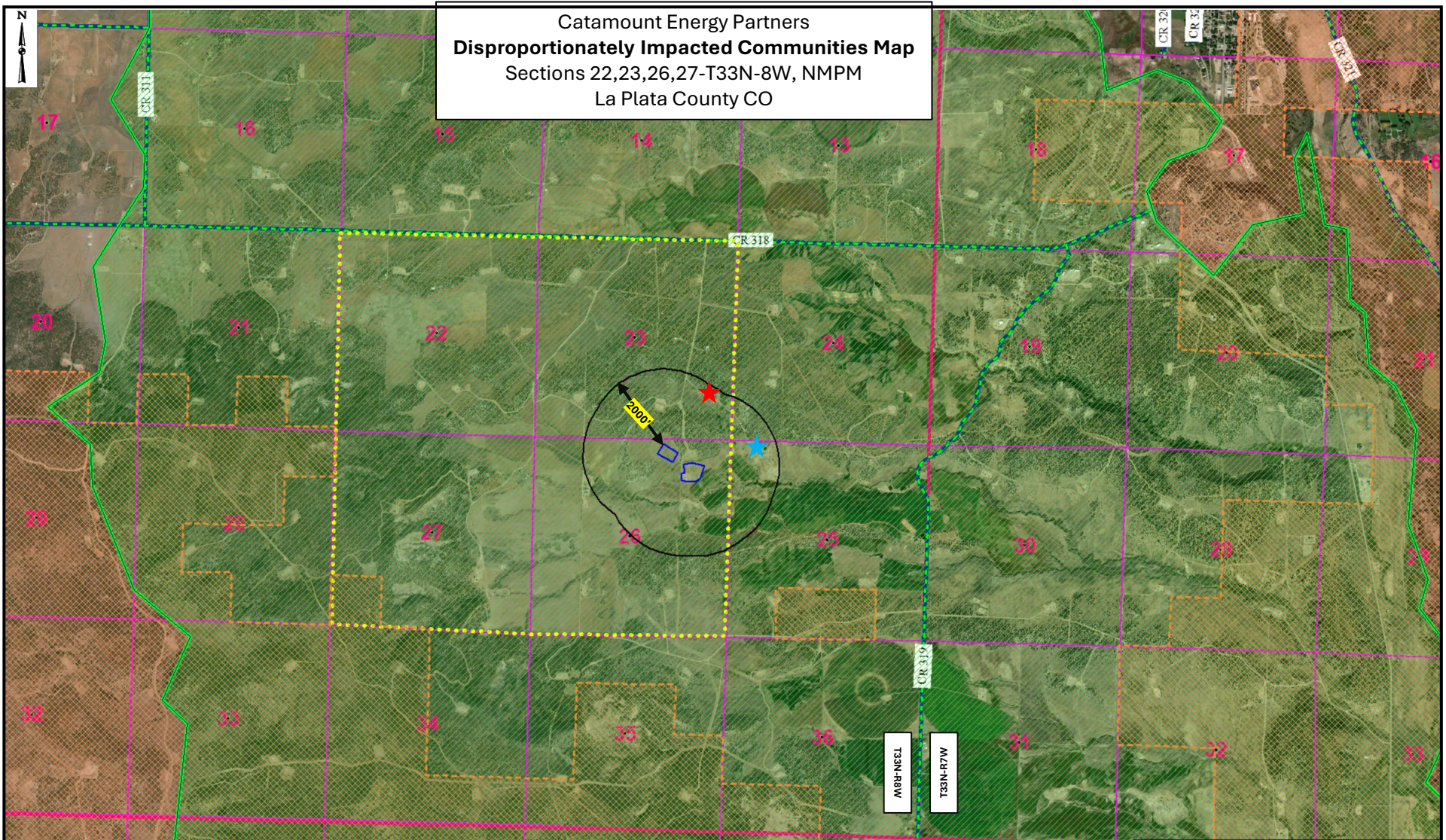
Catamount Energy Partners LLC

Proposal in Sections 22,23,26,27 T33N R8W: 




12/2024

La Plata County Co

Catamount Energy Partners  
**Disproportionately Impacted Communities Map**  
 Sections 22,23,26,27-T33N-8W, NMPM  
 La Plata County CO

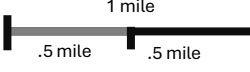


-  Proposed Mineral Development
-  Pad Location
-  D.I.C. Area: 080679403001
-  S.U.I.T Surface
-  30 Section Line

-  RBU's Within 2000' Inhabited (1892' from WPS)
-  Uninhabited (1643' from WPS)
-  2000' Radius


## Proposed Outpost 33-8 Pad

ALL in Sections 22,23,26,27 T33N R8W:



1 mile  
 .5 mile   .5 mile

**Catamount Energy Partners LLC**

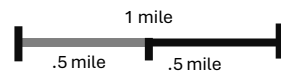
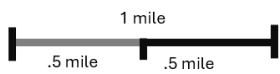
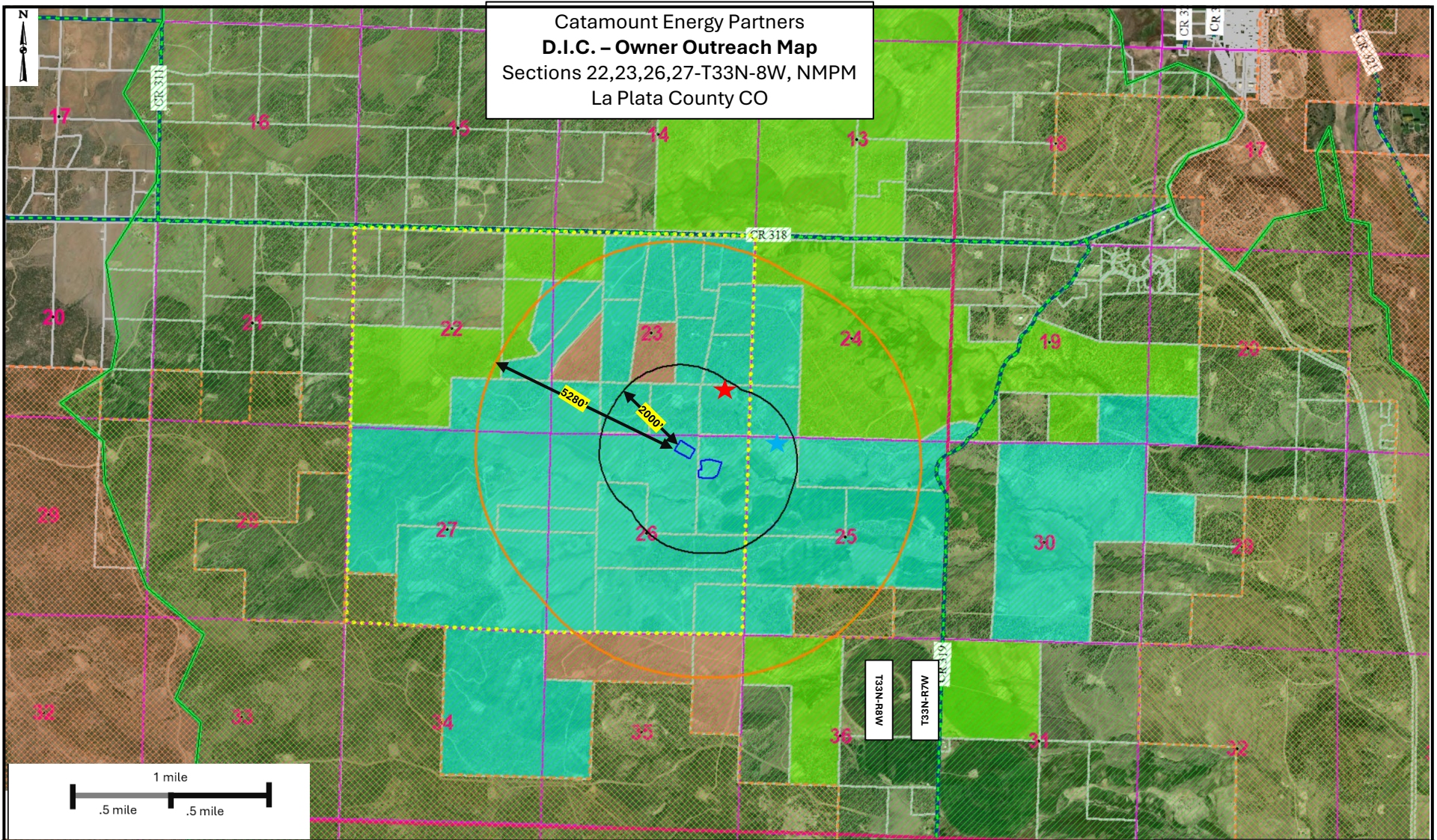


**CATAMOUNT  
 ENERGY PARTNERS**

La Plata County Co

12/2024  
 5/2025- Revised

**Catamount Energy Partners**  
**D.I.C. – Owner Outreach Map**  
 Sections 22,23,26,27-T33N-8W, NMPM  
 La Plata County CO



<ul style="list-style-type: none"> <li> Proposed Mineral Development</li> <li> Pad Location</li> <li> D.I.C. Area</li> <li> S.U.I.T Surface</li> <li> Section Line</li> </ul>	<p><b>RBUs Within 2000' Inhabited</b>   (1892' from WPS)</p> <p><b>RBUs Within 2000' Uninhabited</b>   (1643' from WPS)</p> <p> 2000' Radius</p> <p> 5280' Radius</p>	<p><b>Owner Communication Record</b></p> <ul style="list-style-type: none"> <li> In Person Meetings</li> <li> Phone/Email/Text</li> <li> Out of State Owner Phone/Email/Text</li> </ul>	<p align="center"><b>Proposed Outpost 33-8 Pad</b></p>	<p align="center"><b>Catamount Energy Partners LLC</b></p> <p>ALL in Sections 22,23,26,27 T33N R8W: </p> <p>12/2024 5/2025- Revised</p> <p align="right">La Plata County Co</p>
---	---	---	--	---