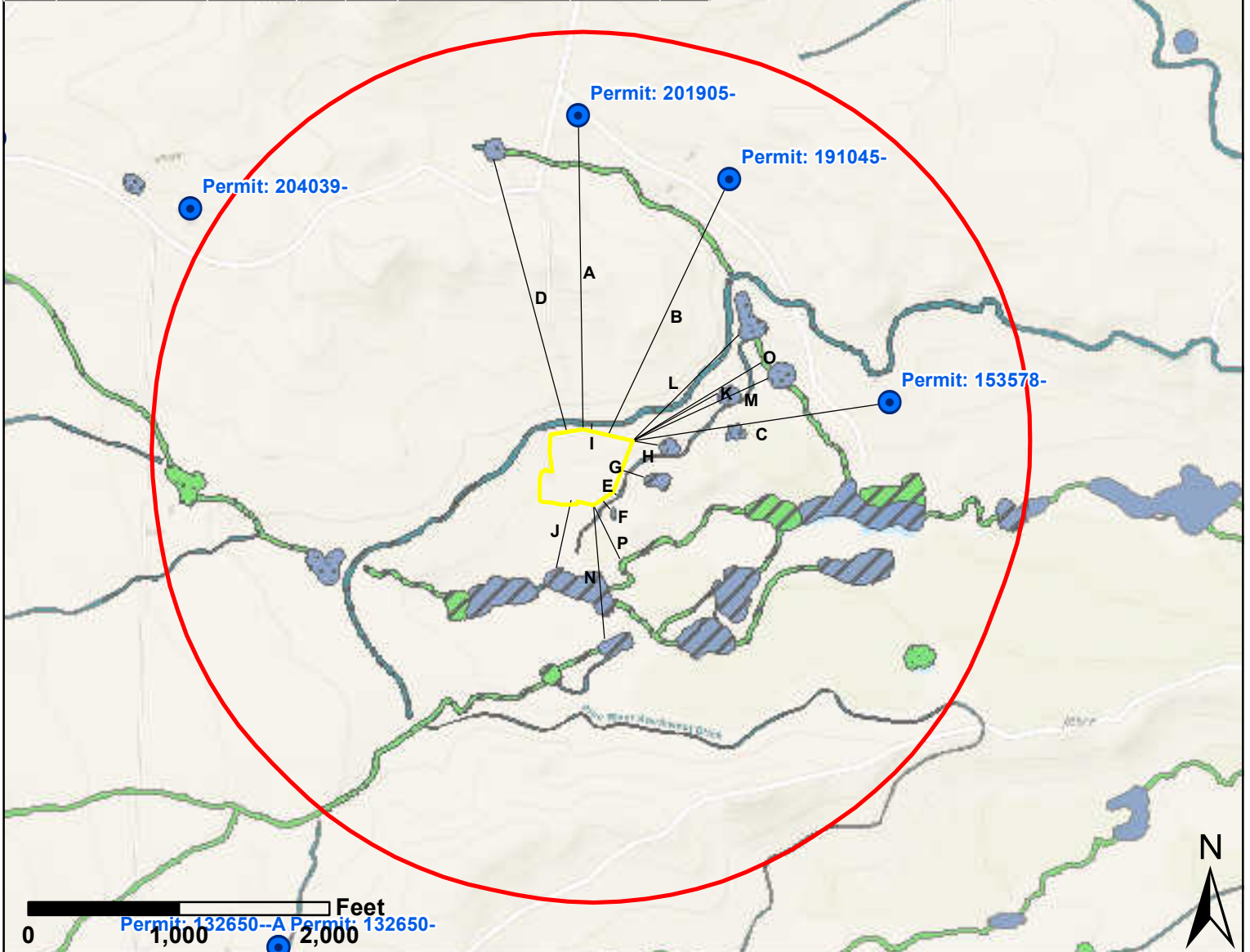


Label	Water Feature	Distance (feet)	Bearing	Label	Water Feature	Distance (feet)	Bearing
A	Water Well Permit 201905	2,084	359	I	Pine River Southwest Ditch	52	5
B	Water Well Permit 191045	1,882	25	J	Freshwater Pond	455	192
C	Water Well Permit 153578	1,725	82	K	Freshwater Pond	641	241
D	Freshwater Pond	1,875	345	L	Freshwater Pond	992	45
E	Irrigation Ditch	24	135	M	Freshwater Pond	984	65
F	Freshwater Pond	80	320	N	Freshwater Pond	889	175
G	Freshwater Pond	151	107	O	Freshwater Emergent Wetland	995	59
H	Freshwater Pond	167	100	P	Freshwater Emergent Wetland	397	154



Notes: No Rule 411 buffer zones or Public Water Supply System facilities are present within 2,640 feet of the working pad surface. No surface waters within 2,640 feet of the working pad surface are 15 miles upstream of a Public Water System intake. Based on field observations and a wetlands test pit, there are no ponds or wetlands present on the well pad or tank pad. Surface water features in the immediate vicinity of the pad were evaluated and adjusted based on field observations. Surface water features outside of the immediate vicinity of the pad are based on the USFWS National Wetland Inventory.

Legend

-  2,640ft Buffer
-  Well Pad Working Pad Surface
-  Feature Distance and Bearing Line
-  Water Well
-  Freshwater Emergent Wetland
-  Freshwater Pond
-  Riverine
-  Downgradient Wetland
-  Upgradient Wetland



Mapping by: E. Millar, 5/19/2025
 Coordinate System:
 NAD 1983 UTM Zone 13 N

Location: NE Sec 26 T33N R8W, NMPM

Figure 1
Outpost 33-8 Pad
Well Pad Hydrology Map
Catamount Energy Partners LLC