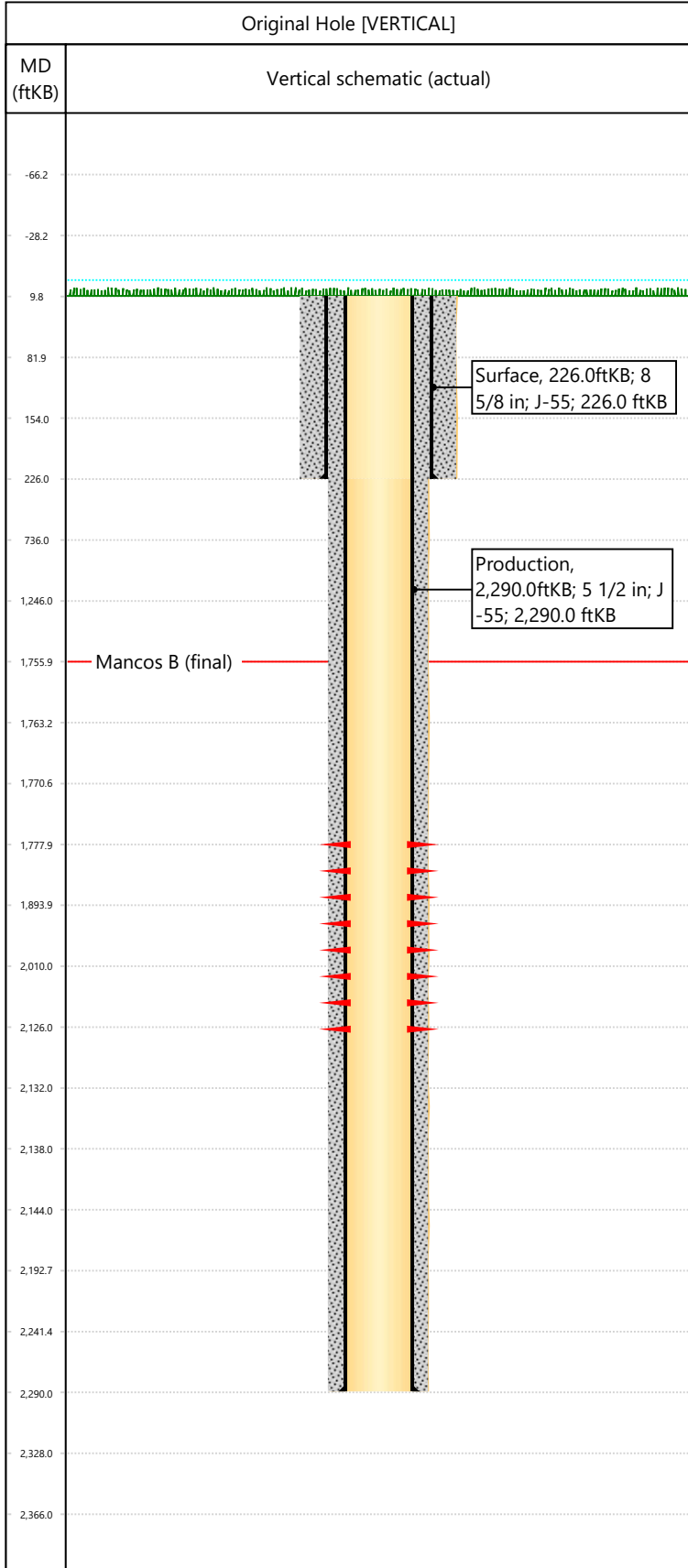


Well Name: DOUGLAS CK UN 21

API/UWI 05103093060000	Surface Legal Location 36-02S-102W	Field Name Douglas Creek Unit	License #	State/Province CO	Well Configuration Type VERTICAL
Original KB Elevation (ft) 6,396	KB-Tubing Head Distance (ft)	Spud Date 6/7/1988 00:00	Rig Release Date	PBTD (All) (KB)	Total Depth All (TVD) (KB)



Hole Size				
Section Description	Size (in)	Btm Depth (ftKB)		
Surface	12 1/4	226.0		
Section Description	Size (in)	Btm Depth (ftKB)		
Production	7 7/8	2,290.0		
Formations				
Formation Name	Final Top MD (ftKB)			
Mancos B	1,756.0			
Casing Strings				
Csg Des	OD (in)	Wt/Len (lb/ft)	Grade	Set Depth (ftKB)
Surface	8 5/8	24.00	J-55	226.0
Production	5 1/2	15.50	J-55	2,290.0
Perforations				
Date	Top (ftKB)	Btm (ftKB)	Zone	
6/14/1988	1778	2126	Mancos B, Original Hole	
Total				
Tubing Strings				
Tubing Description	Run Date	String Length (ft)	Set Depth (ftKB)	
Tubing - Production			1,752.0	
Item Des	Icon	Jts	OD (in)	Wt (lb/ft)
Rod Strings				
Rod Description	Run Date	String Length (ft)	Set Depth (ftKB)	
Item Des	Icon	Jts	OD (in)	Wt (lb/ft)
Other In Hole				
Des	Icon	OD (in)	Top (ftKB)	Btm (ftKB)
			Run Date	Pull Date
Cement				
Description	Proposed/Actual Run	Type	Top Depth (ftKB)	
Surface Casing Cement	Actual	Casing	10.0	
Description	Proposed/Actual Run	Type	Top Depth (ftKB)	
Production Casing Cement	Actual	Casing	10.0	