

# INITIAL DECOMMISSIONING REPORT

## MILE HIGH SHEEP 8-32 FLOWLINE

ECMC REMEDIATION # 31428

Prepared for:

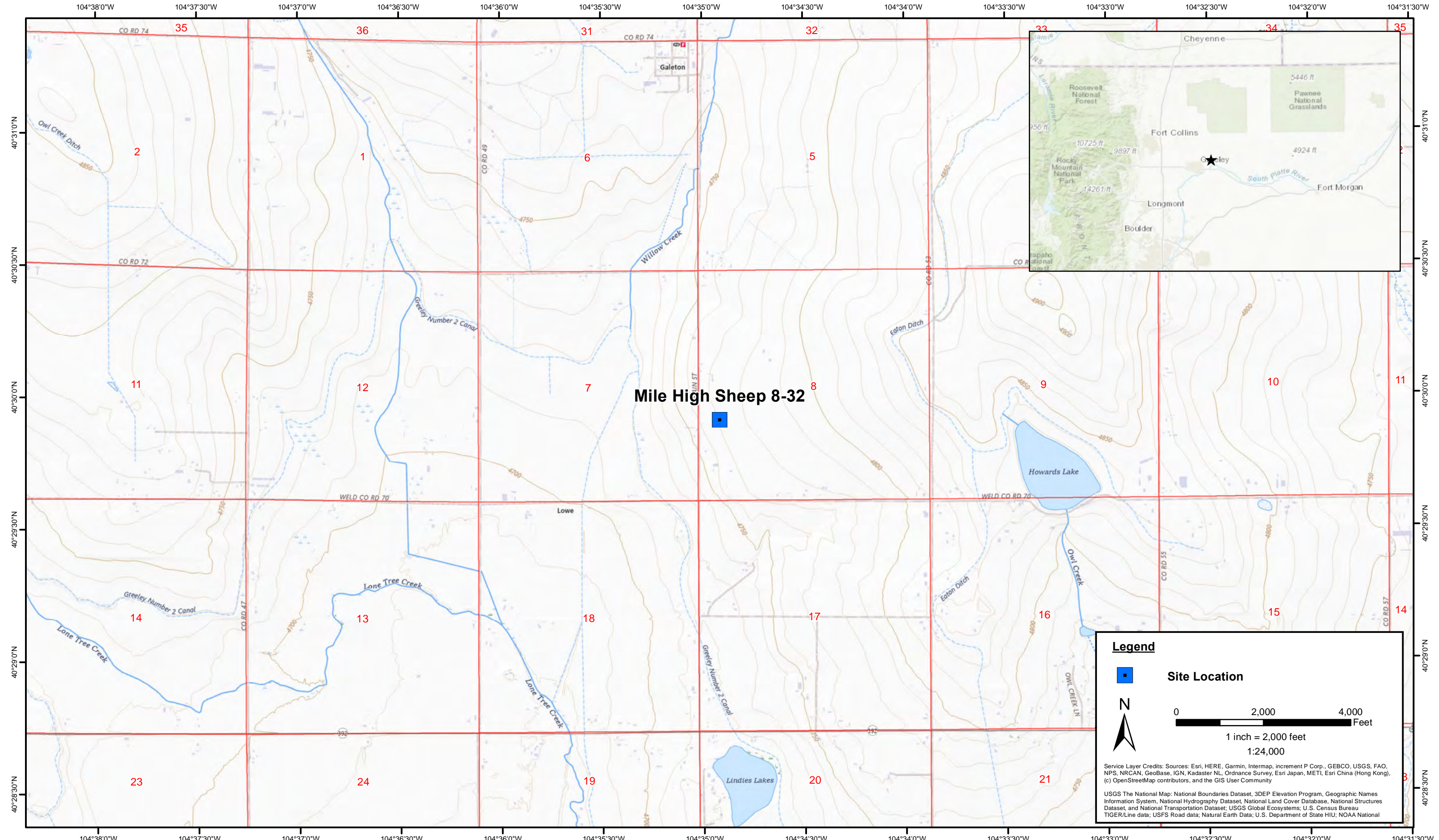


1099 18th Street  
Suite 1500  
Denver, CO 80202

Prepared by:



4725 Independence Street  
Wheat Ridge, CO 80033



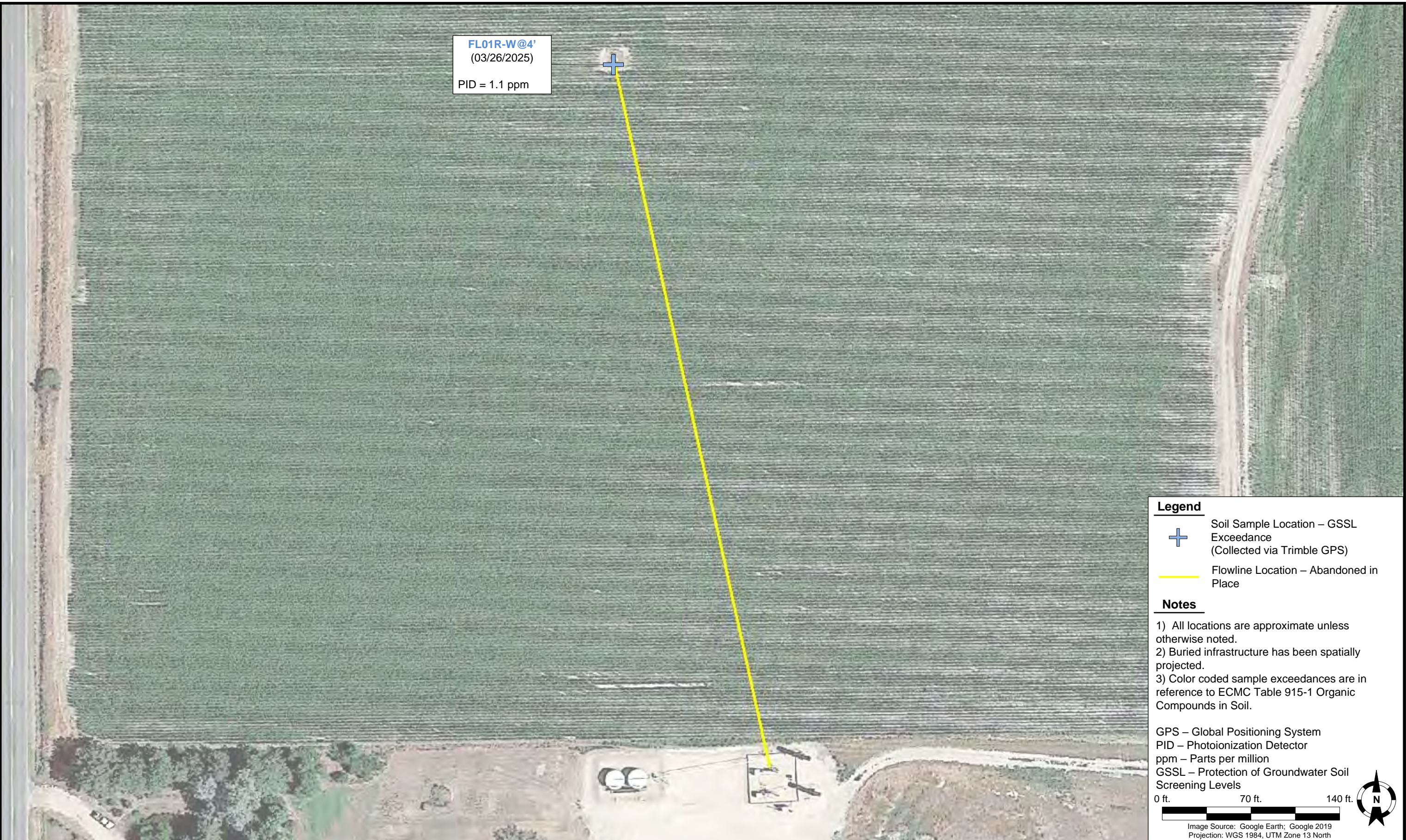
DATE: May 2025  
 DESIGNED BY: B. Nelson  
 DRAWN BY: L. Reed



**Noble Energy, Inc. – 100322**  
**Mile High Sheep 8-32**  
 NWSW, Section 8, Township 6 North, Range 64 West  
 Weld County, Colorado



Site Location Map

Figure  
1



FL01R-W@4'  
(03/26/2025)  
PID = 1.1 ppm

**Legend**

-  Soil Sample Location – GSSL Exceedance (Collected via Trimble GPS)
-  Flowline Location – Abandoned in Place


**Notes**

- 1) All locations are approximate unless otherwise noted.
- 2) Buried infrastructure has been spatially projected.
- 3) Color coded sample exceedances are in reference to ECOMC Table 915-1 Organic Compounds in Soil.

GPS – Global Positioning System  
 PID – Photoionization Detector  
 ppm – Parts per million  
 GSSL – Protection of Groundwater Soil Screening Levels

0 ft.      70 ft.      140 ft.

Image Source: Google Earth; Google 2019  
 Projection: WGS 1984, UTM Zone 13 North



DATE: June 11, 2025

DESIGNED BY: J. Whritenour

DRAWN BY: M. Reynolds



**Noble Energy, Inc. – 100322**  
**Mile High Sheep 8-32**  
 NWSW, Section 8, Township 6 North, Range 64 West  
 Weld County, Colorado

**SOIL SAMPLE  
 LOCATION MAP  
 (FLOWLINE)**

**FIGURE  
 2**

**TABLE 1**  
**FIELD DATA SUMMARY TABLE**  
**NOBLE ENERGY, INC. - 100322**  
**MILE HIGH SHEEP 8-32 FLOWLINE, WELD COUNTY, COLORADO**  
**REM # 31428**

Sample ID	Sample Date	Depth (ft. bgs)	GPS Data Latitude/Longitude		PDOP Value	VOC Concentration (ppm)
FL01R-W@4'	3/26/2025	4	40.498205	-104.581965	0.8	1.1

1. Global Positioning System (GPS) data is provided in decimal degrees using North American Datum (NAD) 83 UTM Zone 13 North.

2. Volatile organic compound (VOC) concentrations are measured in the field using a photoionization detector (PID).

PDOP = Position Dilution of Precision

ppm = Parts per million

ft. = Feet

bgs = Below ground surface

TABLE 2  
SUMMARY OF VOLATILE ORGANIC SOIL CHEMISTRY DATA  
NOBLE ENERGY, INC. - 100322  
MILE HIGH SHEEP 8-32 FLOWLINE, WELD COUNTY, COLORADO  
REM # 31428

Sample ID	Sample Date	Depth (ft. bgs)	Benzene (mg/kg)	Toluene (mg/kg)	Ethyl-Benzene (mg/kg)	Xylenes (mg/kg)	1,2,4-Trimethyl-Benzene (mg/kg)	1,3,5-Trimethyl-Benzene (mg/kg)	Naphthalene (mg/kg)	TPH (mg/kg)	TPH GRO (mg/kg)	TPH DRO (mg/kg)	TPH ORO (mg/kg)
ECMC Table 915-1 Limits (Residential SSL)			1.2	490	5.8	58	30	27	2	500	500**		
ECMC Table 915-1 Limits (Protection of Groundwater SSL)			0.0026	0.69	0.78	9.9	0.0081	0.0087	0.0038	500	500**		
FL01R-W@4'	3/26/2025	4	<0.0020	<0.0050	<0.0050	<0.010	<0.0050	<0.0050	<0.0038	<50	<0.50	<50	<50

1. **Bold** values exceed the ECMC Table 915-1 limit(s).
2. Red & blue highlighted soil analytical values indicate an exceedance of the referenced soil screening level (SSL).
3. \*\* Summation of GRO+DRO+ORO must be less than 500 mg/kg.

**Analyzed out of hold time**

ECMC = Energy & Carbon Management Commission

(<) = Analytical result is less than the indicated laboratory reporting limit.

TPH-GRO = Total petroleum hydrocarbons - gasoline range organics

TPH-DRO = Total petroleum hydrocarbons - diesel range organics

TPH-ORO = Total petroleum hydrocarbons - oil range organics

mg/kg = Milligrams per kilogram

ft. = Feet

bgs = Below ground surface

TABLE 3  
SUMMARY OF POLYCYCLIC AROMATIC HYDROCARBON SOIL CHEMISTRY DATA  
NOBLE ENERGY, INC. - 100322  
MILE HIGH SHEEP 8-32 FLOWLINE, WELD COUNTY, COLORADO  
REM # 31428

Sample ID	Sample Date	Depth (ft. bgs)	Acenaphthene (mg/kg)	Anthracene (mg/kg)	Benzo (a) Anthracene (mg/kg)	Benzo (a) Pyrene (mg/kg)	Benzo (b) Fluoranthene (mg/kg)	Benzo (k) Fluoranthene (mg/kg)	Chrysene (mg/kg)	Dibenzo (a,h) Anthracene (mg/kg)	Fluoranthene (mg/kg)	Fluorene (mg/kg)	Indeno (1,2,3-cd) Pyrene (mg/kg)	Pyrene (mg/kg)	1-Methyl - Naphthalene (mg/kg)	2-Methyl - Naphthalene (mg/kg)
ECMC Table 915-1 Limits (Residential SSL)			360	1,800	1.1	0.11	1.1	11	110	0.11	240	240	1.1	180	18	24
ECMC Table 915-1 Limits (Protection of Groundwater SSL)			0.55	5.8	0.011	0.24	0.3	2.9	9	0.096	8.9	0.54	0.98	1.3	0.006	0.019
FL01R-W@4'	3/26/2025	4	0.0137	0.0328	<b>0.0443</b>	0.0291	0.0465	0.0152	0.0395	<0.00500	0.141	0.0177	0.0165	0.104	<0.00500	<0.00500

1. **Bold** values exceed the ECMC Table 915-1 limit(s)

2. Red & blue highlighted soil analytical values indicate an exceedance of the referenced soil screening level (SSL)

(<) = Analytical result is less than the indicated laboratory reporting limit.

mg/kg = Milligrams per kilogram

ft. = Feet

bgs = Below ground surface

**TABLE 4**  
**SUMMARY OF SOIL SUITABILITY FOR RECLAMATION**  
**NOBLE ENERGY, INC. - 100322**  
**MILE HIGH SHEEP 8-32 FLOWLINE, WELD COUNTY, COLORADO**  
**REM # 31428**

Sample ID	Sample Date	Depth (ft. bgs)	pH (Standard Units)	EC (mmhos/cm)	SAR (Standard Units)	Boron (mg/L)
ECMC Table 915-1 Soil Suitability Limits			6 - 8.3	<4	<6	2
FL01R-W@4'	3/26/2025	4	<b>8.37</b>	0.651	0.509	<2.00

1. **Bold** faced values exceed the ECMC Table 915-1 limit(s), but are within 1.25x maximum background concentrations.

2. **Bold** faced values exceed the ECMC Table 915-1 limit(s) and native background concentrations.

3. Brown highlighted soil analytical values indicate a regulatory exceedance.

ECMC = Colorado Energy & Carbon Management Commission

EC = Electrical conductivity

SAR = Sodium adsorption ratio

mmhos/cm = millimhos per centimeter

mg/L = milligram per liter

(<) = Analytical result is less than the indicated laboratory reporting limit.

ft. = Feet

bgs = Below ground surface

TABLE 5  
SUMMARY OF METALS IN SOIL CHEMISTRY DATA  
NOBLE ENERGY, INC. - 100322  
MILE HIGH SHEEP 8-32 FLOWLINE, WELD COUNTY, COLORADO  
REM # 31428

Sample ID	Sample Date	Depth (ft. bgs)	Arsenic (mg/kg)	Barium (mg/kg)	Cadmium (mg/kg)	Chromium (VI) <sup>(4)</sup> (mg/kg)	Copper (mg/kg)	Lead (mg/kg)	Nickel (mg/kg)	Selenium (mg/kg)	Silver (mg/kg)	Zinc (mg/kg)
ECMC Table 915-1 Limits (Residential SSL)			0.68	15,000	71	0.3	3,100	400	1,500	390	390	23,000
ECMC Table 915-1 Limits (Protection of Groundwater SSL)			0.29	82	0.38	0.00067	46	14	26	0.26	0.8	370
FL01R-W@4'	3/26/2025	4	<b>2.51</b>	50.9	<0.200	<0.30*	4.02	5.20	4.14	<0.260	<0.0200	19.2

1. **Bold** faced values exceed the ECMC Table 915-1 limit(s), but are within 1.25x maximum background concentrations.
2. **Bold** faced values exceed the ECMC Table 915-1 limit(s) and native background concentrations.
3. Red & blue highlighted soil analytical values indicate an exceedance of the referenced soil screening level (SSL).
4. Compound falls within ECMC Table 915-1 Footnote 9.

ECMC = Energy & Carbon Management Commission

(<) = Analytical result is less than the indicated laboratory reporting limit.

mg/kg = Milligrams per kilogram

ft. = Feet

bgs = Below ground surface

\* Indicates laboratory minimum detection limit in excess of SSL



## TANK BATTERY DECOMMISSIONING FORM

<b>CLIENT:</b> Noble		<b>SITE NAME:</b> Mile High Sheep 8-32					<b>DATE:</b> 3/26/2025	<b>REM. PROJECT #:</b> 31428	<b>WEATHER:</b> Sunny, 70s	
<b>SITE DIRECTIONS:</b> CR51 & CR70, 0.2 E, 0.2 N, 400ft into							<b>JOB#:</b> 10269			
<b>LEGALS AND LAT/LONG:</b> NSW, S8, T6N, R64W / 40.496643, -104.581725							<b>TASMAN PERSONNEL:</b> E. Card, W. Wadleigh			
<b>SOIL TYPES:</b> Well Graded Sand - SW							<b>SURFACE GRADIENT:</b> Southwest			
<b>SOIL SAMPLING</b>							<b>FACILITY INFRASTRUCTURE</b>			
Date/Time	Soil Sample ID	PID (ppm)	Visual	Olfactory	Photo?	Grab or Lab Sample?	EQUIPMENT	Quantity		
							Above Ground Storage Tank (AST)			
03-26-2025 11:52	FL01R-W@4'	1.1	No Staining	No Odor	Yes	Lab	Buried or Partially Buried Vessel			
							Separator			
							Emission Control Device (ECD)			
							Dump Line			
							Wellhead			
							Flowline	1	✓	
							Other:			
<b>Soil Loads Removed</b>										
							<b>IMPACTED SOIL IDENTIFIED?</b>			
							<b>ESTIMATED VOLUME OF IMPACTS:</b>			
							Date	Number	CY	
							<b>Total Removed</b>	0	0	
							<b>Disposal Facility:</b>			
<b>Groundwater Recovery</b>										
							<b>DATE GW ENCOUNTERED:</b>		<b>DEPTH:</b>	
							<b>GROUNDWATER IN CONTACT WITH IMPACTED SOIL?</b>			
							<b>LNAPL OR SHEEN OBSERVED ON GW?</b>			
<b>GROUNDWATER SAMPLING</b>							Date	BBLs		
Date/Time	Groundwater Sample ID	Depth Collected	Turbid?	Sheen?	Odor?	Photo?				
							<b>Total Removed</b>	0		
							<b>Disposal Facility:</b>			

# Chevron Rockies Business Unit

## Field Qualitative Criteria for ECMC Reporting Associated with the Discovery of Potentially Impacted Material

If answered **Yes** to any of the questions listed below, this may suggest the presence of potentially impacted materials as outlined in ECMC Rule 912. Out of an abundance of caution, a “Yes” response will be reported to the ECMC within 24 hours after discovery, regardless of laboratory results. **Immediately notify the RBU Remediation Team.** Include a copy of this Field Qualitative Spill Criteria Checklist in the field Report.

Please answer the following questions when on-site:

1. Is there visible petroleum hydrocarbon staining in the soil? No\_\_\_\_\_
2. Does the soil sample from the stained area have a petroleum odor? No\_\_\_\_\_
3. Is there a petroleum hydrocarbon sheen on the nearby surface water? No\_\_\_\_\_
4. Does there appear to be a sheen of the surface of accumulated groundwater or seeps within the excavation indicative of petroleum? No\_\_\_\_\_
5. Is stained soil in contact with groundwater? No\_\_\_\_\_

Please Include relevant photos of the site conditions for items 1-5.

Location name: Mile High Sheep 08-32\_\_\_\_\_

Please Circle Facility Type: Flowline\_\_\_\_\_





<b>Equipment ID:</b>		<b>Equipment Type:</b>		<b>Equipment ID:</b>		<b>Equipment Type:</b>	
<b>Material:</b>	<b>Volume:</b>	<b>Contents:</b>		<b>Material:</b>	<b>Volume:</b>	<b>Contents:</b>	
<b>Notes/Conditions:</b>				<b>Notes/Conditions:</b>			