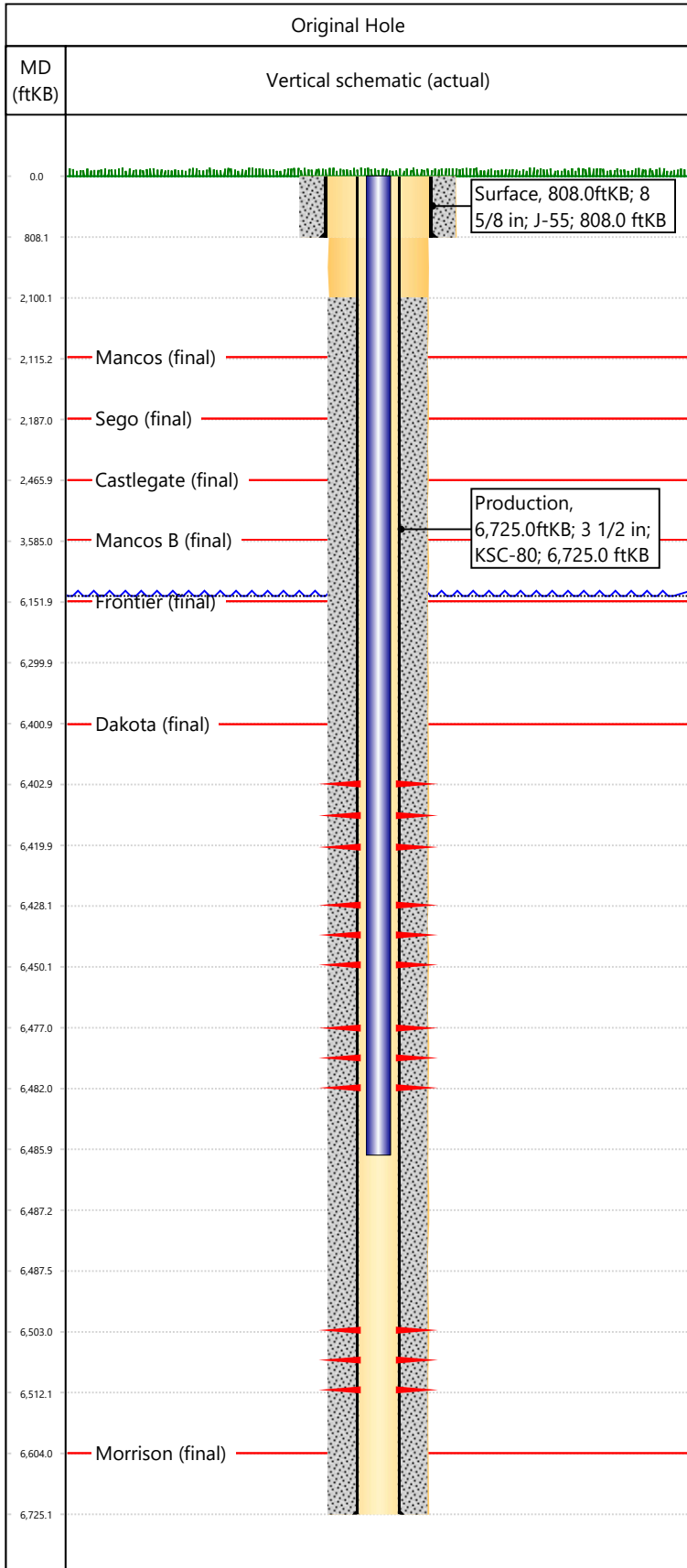


Well Name: **PARK MTN 13-08**

API/UWI 05103097730000	Surface Legal Location	Field Name Park Mountain	License #	State/Province CO	Well Configuration Type
Original KB Elevation (ft) 5,974	KB-Tubing Head Distance (ft)	Spud Date	Rig Release Date	PBTD (All) (KB)	Total Depth All (TVD) (KB)



Hole Size		
Section Description	Size (in)	Btm Depth (ftKB)
Surface	12 1/4	808.0
Section Description	Size (in)	Btm Depth (ftKB)
Production	7 7/8	6,725.0

Formations	
Formation Name	Final Top MD (ftKB)
Mancos	2,115.0
Formation Name	Final Top MD (ftKB)
Sego	2,187.0
Formation Name	Final Top MD (ftKB)
Castlegate	2,466.0
Formation Name	Final Top MD (ftKB)
Mancos B	3,585.0
Formation Name	Final Top MD (ftKB)
Frontier	6,152.0
Formation Name	Final Top MD (ftKB)
Dakota	6,401.0
Formation Name	Final Top MD (ftKB)
Morrison	6,604.0

Casing Strings				
Csg Des	OD (in)	Wt/Len (lb/ft)	Grade	Set Depth (ftKB)
Surface	8 5/8	24.00	J-55	808.0
Production	3 1/2	7.70	KSC-80	6,725.0

Perforations			
Date	Top (ftKB)	Btm (ftKB)	Linked Zone
4/29/1996	6403	6420	Dakota, Original Hole
4/29/1996	6428	6450	Dakota, Original Hole
4/29/1996	6477	6482	Dakota, Original Hole
4/29/1996	6503	6512	Dakota, Original Hole

Total

Tubing Strings			
Tubing Description	Run Date	String Length (ft)	Set Depth (ftKB)
Tubing - Production	5/12/2025	6,487.50	6,487.5

Item Des	Icon	Jts	OD (in)	Wt (lb/ft)	Grade	Len (ft)
Tubing JT AVR 33.09		196	1.9	2.76	J-55	6486
Pump Seating Nipple		1				1.1
Re entry collar		1				0.4

Rod Strings						
Rod Description	Run Date	String Length (ft)	Set Depth (ftKB)			
Item Des	Icon	Jts	OD (in)	Wt (lb/ft)	Grade	Len (ft)

Other In Hole						
Des	Icon	OD (in)	Top (ftKB)	Btm (ftKB)	Run Date	Pull Date

Cement			
Description	Proposed/Actual Run	Type	Top Depth (ftKB)
Surface Casing Cement	Actual	Casing	0.0
Description	Proposed/Actual Run	Type	Top Depth (ftKB)
Production Casing Cement	Actual	Casing	2,100.0