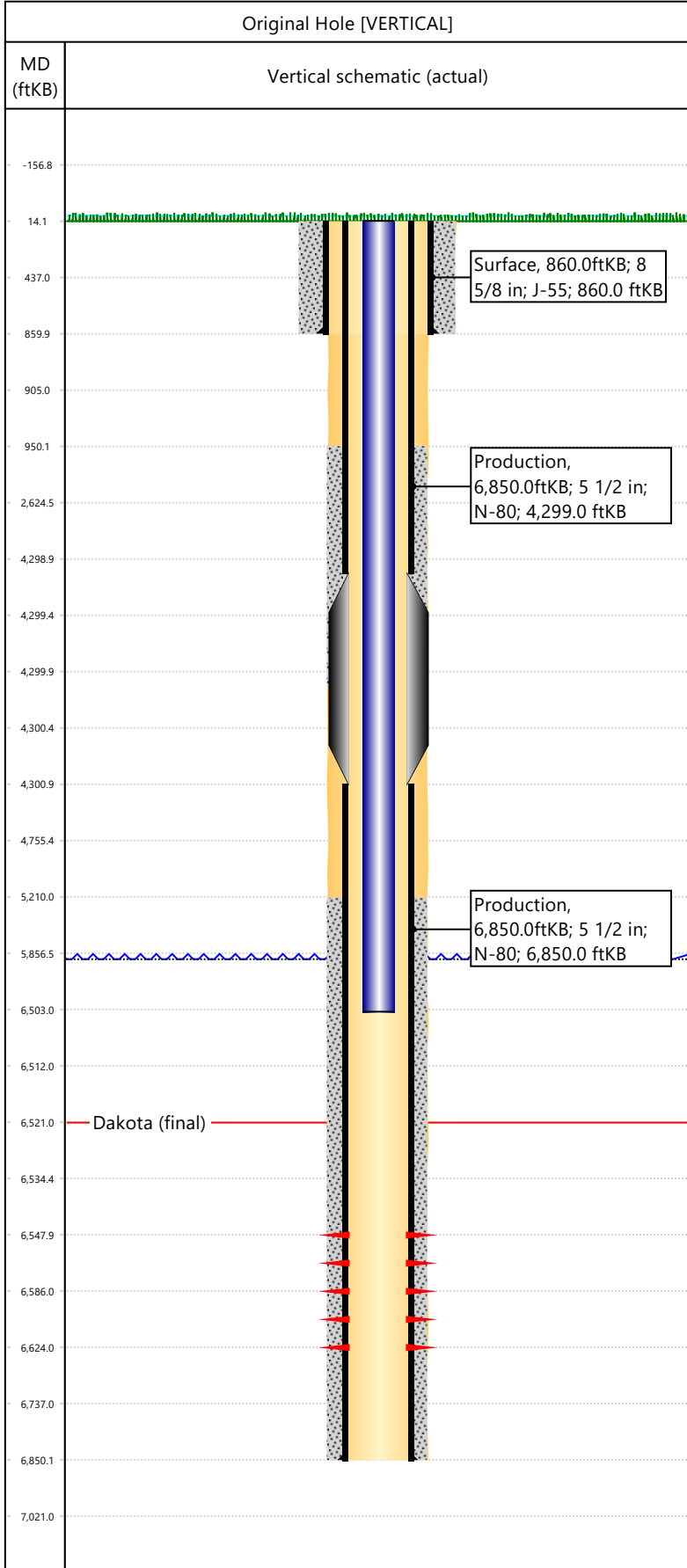


Well Name: **PARK MTN 10-07**

API/UWI 05103100240000	Surface Legal Location 07-03S-103W	Field Name Park Mountain	License #	State/Province CO	Well Configuration Type VERTICAL
Original KB Elevation (ft) 5,924	KB-Tubing Head Distance (ft)	Spud Date 12/8/2000 00:00	Rig Release Date 12/22/2000 00:00	PBD (All) (KB) Original Hole - 6,790.0	Total Depth All (TVD) (KB)



Hole Size				
Section Description	Size (in)	Bottom Depth (ftKB)		
Surface	12 1/4	860.0		
Section Description	Size (in)	Bottom Depth (ftKB)		
Production	7 7/8	6,850.0		
Formations				
Formation Name				Final Top MD (ftKB)
Dakota				6,521.0
Casing Strings				
Csg Des	OD (in)	Wt/Len (lb/ft)	Grade	Set Depth (ftKB)
Surface	8 5/8	32.00	J-55	860.0
Production	5 1/2	17.00	N-80	6,850.0
Perforations				
Date	Top (ftKB)	Btm (ftKB)	Zone	
1/16/2001	6548	6624		
Total				
Tubing Strings				
Tubing Description	Run Date	String Length (ft)	Set Depth (ftKB)	
Tubing - Production		6,489.00	6,503.0	
Item Des	Icon	Jts	OD (in)	Wt (lb/ft)
Tubing			2 3/8	4.70
Grade	J-55			
Len (ft)	6489			
Rod Strings				
Rod Description	Run Date	String Length (ft)	Set Depth (ftKB)	
Item Des	Icon	Jts	OD (in)	Wt (lb/ft)
Grade				
Len (ft)				
Other In Hole				
Des	Icon	OD (in)	Top (ftKB)	Btm (ftKB)
Run Date	Pull Date			
Cement				
Description	Proposed/Actual Run	Type	Top Depth (ftKB)	
Surface Casing Cement	Actual	Casing	14.0	
Production Casing Cement	Actual	Casing	950.0	