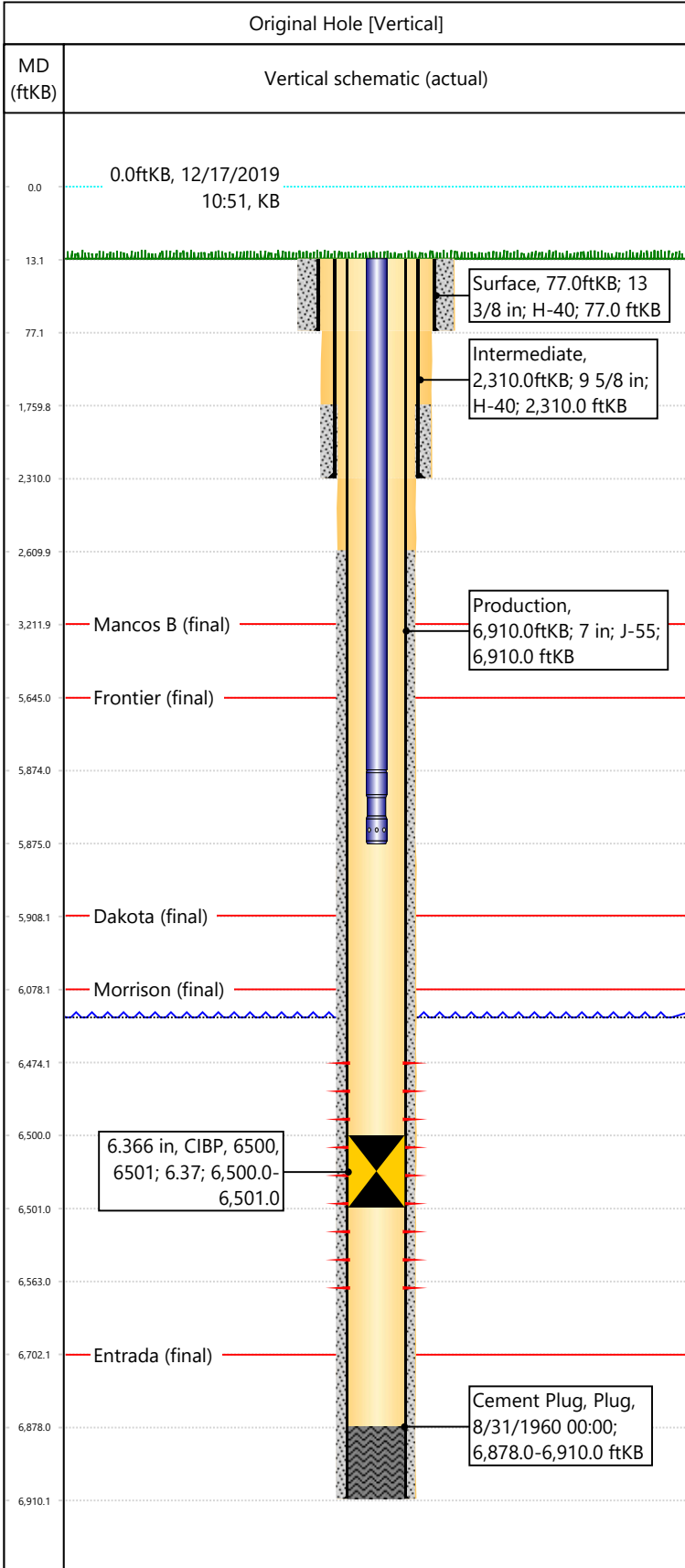


Well Name: MISSOURI CREEK 28 851

API/UWI 05103060590000	Surface Legal Location NWSW-S28-T3S-R103W-6PM	Field Name Southwest Rangely	License #	State/Province CO	Well Configuration Type Vertical
Original KB Elevation (ft) 6,228	KB-Tubing Head Distance (ft) 13	Spud Date 8/1/1960 00:00	Rig Release Date 8/30/1960 00:00	PBD (All) (KB) Original Hole - 6,500.0	Total Depth All (TVD) (KB) Original Hole - 6,910.0



Section Description	Size (in)	Btm Depth (ftKB)
Surface	17 1/2	
Surface	17 1/2	77.0
Intermediate	12 1/4	2,310.0
Production	8 3/4	6,910.0

Formation Name	Final Top MD (ftKB)
Mancos B	3,212.0
Frontier	5,645.0
Dakota	5,908.0
Morrison	6,078.0
Entrada	6,702.0

Csg Des	OD (in)	Wt/Len (lb/ft)	Grade	Set Depth (ftKB)
Surface	13 3/8	48.00	H-40	77.0
Intermediate	9 5/8	36.00	H-40	2,310.0
Production	7	23.00	J-55	6,910.0

Date	Top (ftKB)	Btm (ftKB)	Linked Zone
9/4/1960	6474	6563	Morrison, Original Hole

Tubing Description	Run Date	String Length (ft)	Set Depth (ftKB)
Tubing - Production	5/21/2013	5,862.00	5,875.0

Item Des	Icon	Jts	OD (in)	Wt (lb/ft)	Grade	Len (ft)
Tubing		187	2 3/8	4.70	J-55	5861
Seating nipple		1	2 3/8	4.70	J-55	1

Rod Description	Run Date	String Length (ft)	Set Depth (ftKB)

Des	Icon	OD (in)	Top (ftKB)	Btm (ftKB)	Run Date	Pull Date
CIBP		6.366	6500	6501	5/21/2013	

Description	Proposed/Actual Run	Type	Top Depth (ftKB)
Surface Casing Cement	Actual	Casing	13.0
Intermediate 1 Casing Cement	Actual	Casing	1,760.0
Cement Plug	Actual	Plug	6,878.0
Production Casing Cement	Actual	Casing	2,610.0