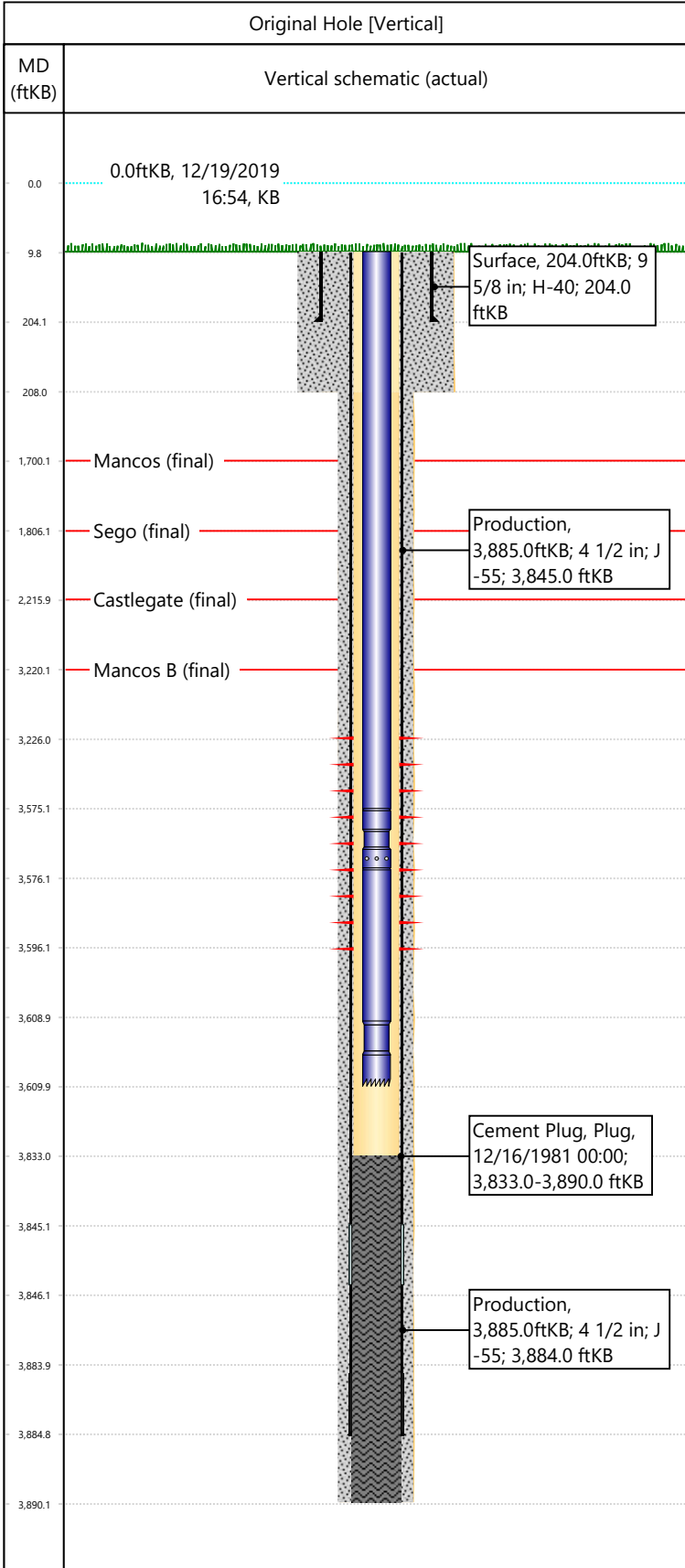


Well Name: BRUSHY POINT 3102

API/UWI 05103088010000	Surface Legal Location SWSE-S13-T3S-R101W-6PM	Field Name Cathedral	License #	State/Province CO	Well Configuration Type Vertical
Original KB Elevation (ft) 6,925	KB-Tubing Head Distance (ft) 10	Spud Date 11/25/1981 00:00	Rig Release Date 12/17/1981 00:00	PBDT (All) (KB) Original Hole - 3,833.0	Total Depth All (TVD) (KB) Original Hole - 3,890.0



Csg Des	OD (in)	Wt/Len (lb/ft)	Grade	Set Depth (ftKB)
Surface	9 5/8	32.30	H-40	204.0
Production	4 1/2	10.50	J-55	3,885.0

Formation Name	Final Top MD (ftKB)
Mancos B	
Mancos	1,700.0
Sego	1,806.0
Castlegate	2,216.0
Mancos B	3,220.0

Date	Top (ftKB)	Btm (ftKB)	Linked Zone
1/30/1982	3226	3596	Mancos B, Original Hole

Total

Tubing Description	Run Date	String Length (ft)	Set Depth (ftKB)
Tubing - Production	2/6/1982	3,600.00	3,610.0

Item Des	Icon	Jts	OD (in)	Wt (lb/ft)	Grade	Len (ft)
Tubing		113	2 3/8			3565
Pump Seating Nipple		1	2 3/8			1
Tubing		1	2 3/8			33
Notched collar		1	2 3/8			1

Rod Description	Run Date	String Length (ft)	Set Depth (ftKB)

Des	Icon	OD (in)	Top (ftKB)	Btm (ftKB)	Run Date	Pull Date

Description	Proposed/Actual Run	Type	Top Depth (ftKB)
Surface Casing Cement	Actual	Casing	10.0
Cement Plug	Actual	Plug	3,833.0
Production Casing Cement	Actual	Casing	10.0